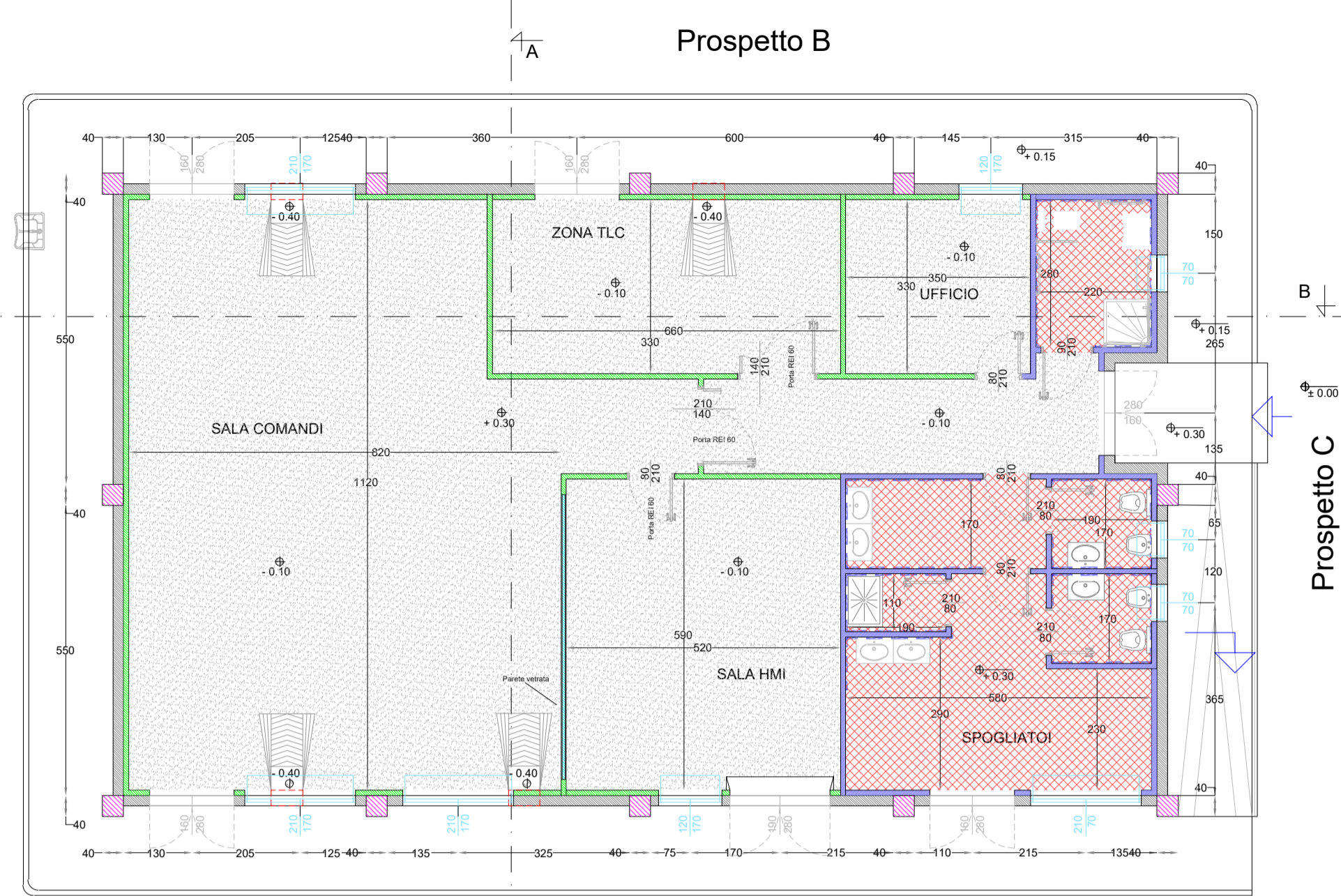


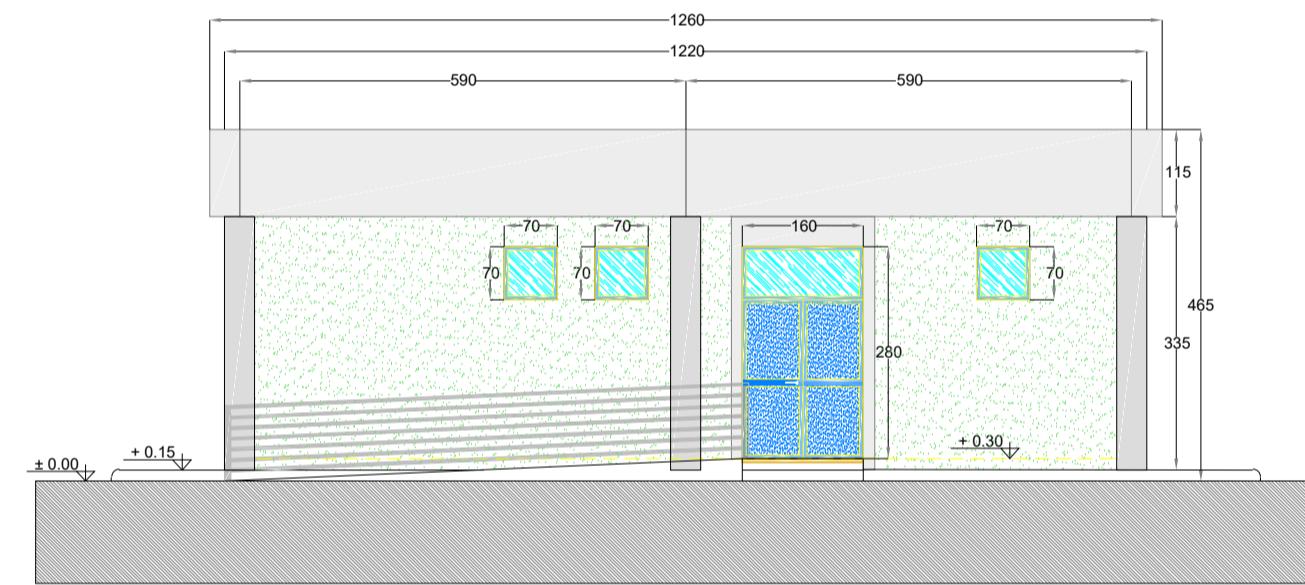
Sezione B - B

Prospetto D

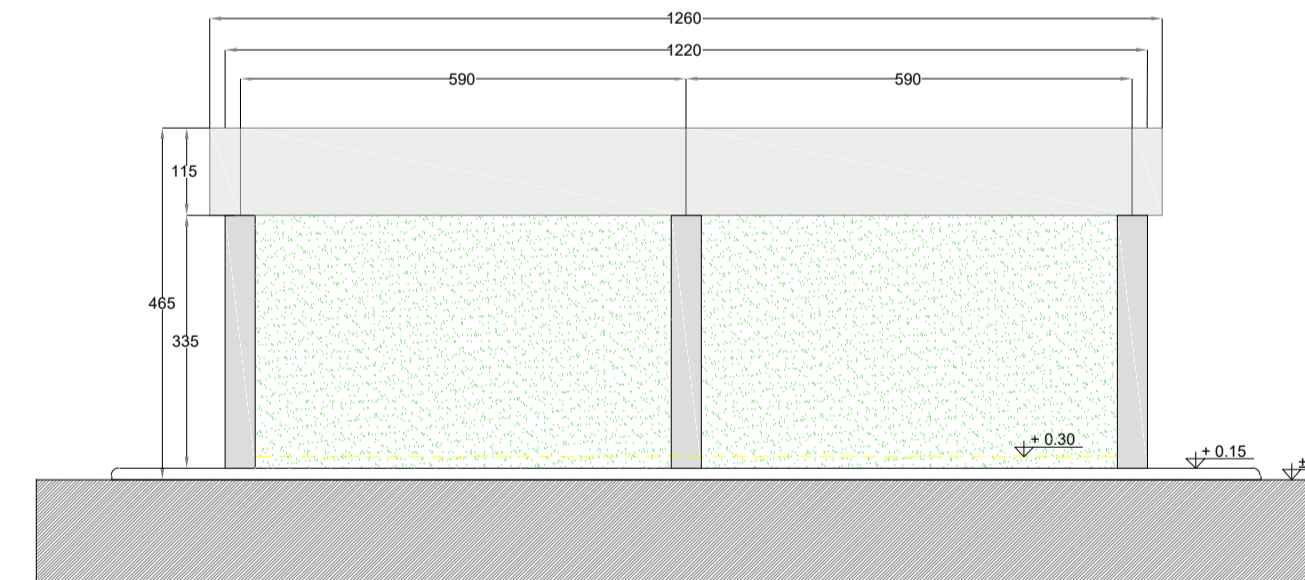


Sezione A - A

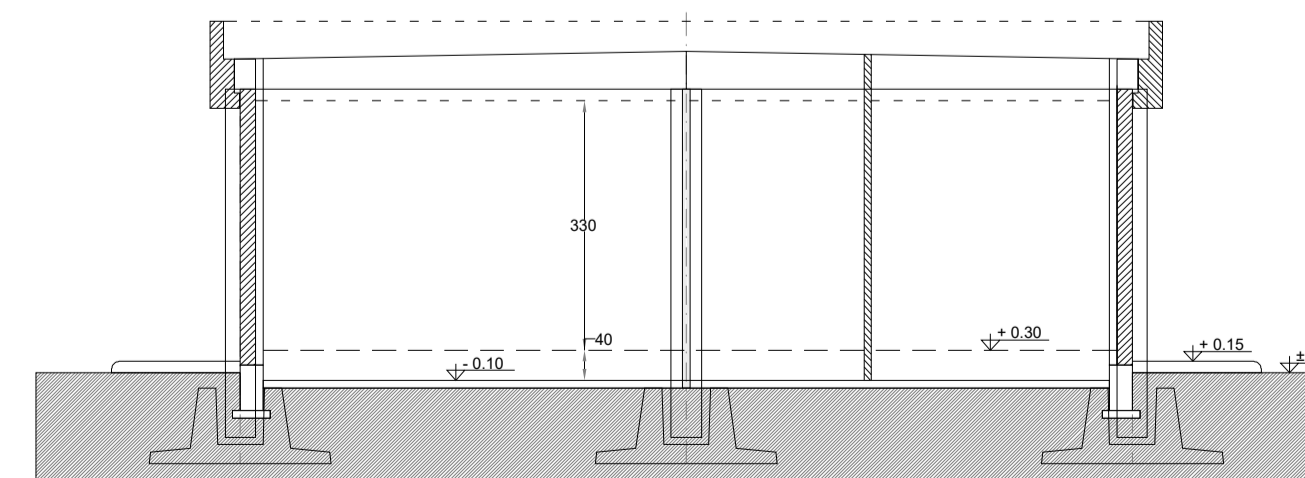
Prospetto C



Prospetto D



Sezione A - A

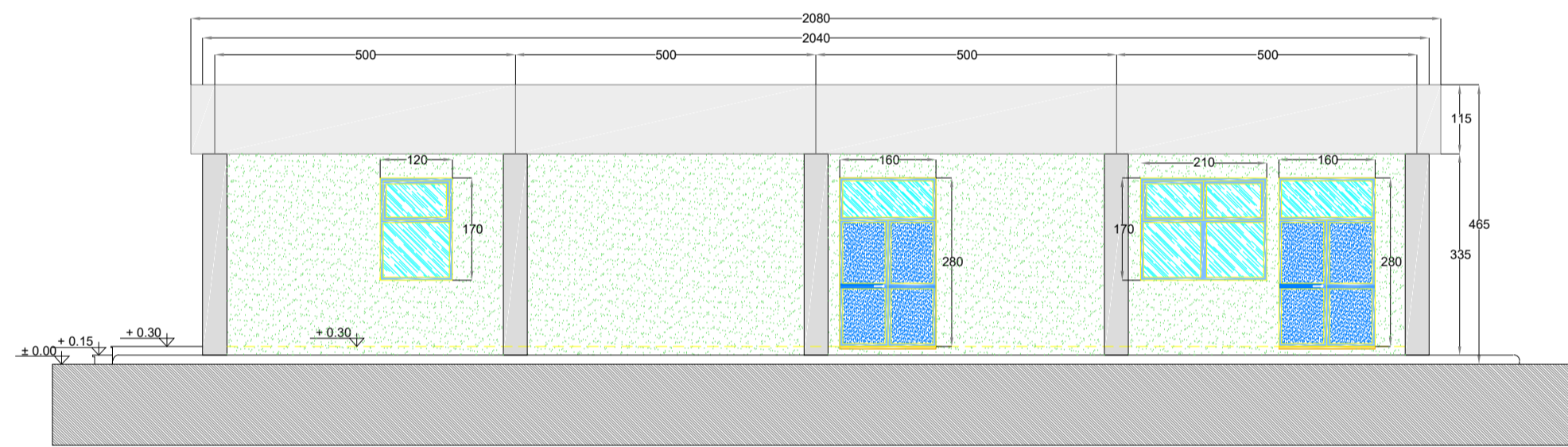


N.B. Le quote sono espresse in cm

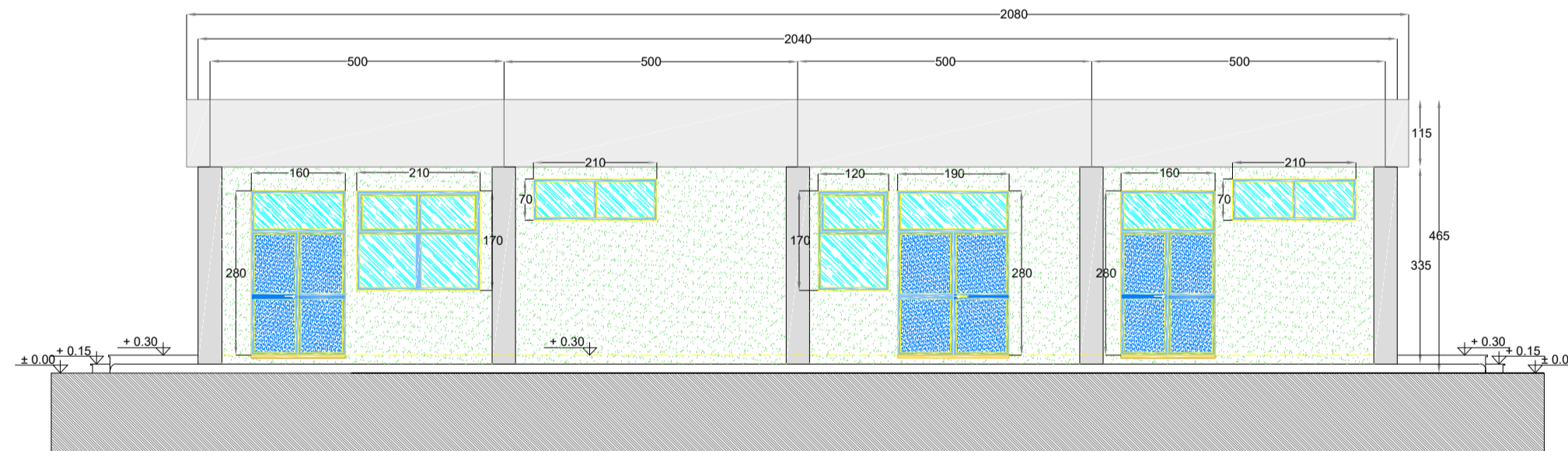
LEGENDA PIANTA

	Pannello di tamponamento prefabbricato
	Pilastri
	Pareti e contropareti in cartongesso con idrolastra
	Pareti in cartongesso REI 60
	Pareti in cartongesso REI 120
	Parete vetrata tra sala controllo e sala comandi
	Rivestimento con piastrella stessa tipologia pavimento
	Pavimentazione con piastrelle in gres battiscopa a mezza piastrella della stessa tipologia
	Pavimento industriale grigio con trattamento antipolvere
	Scarichi acque piovane
	Quote sui prospetti
	Quote in pianta
	Finestre
	Porte esterne
	Porta REI 60
	Porte interne REI 60
	Porte interne
	Porta REI 120
	Porte interne REI 120

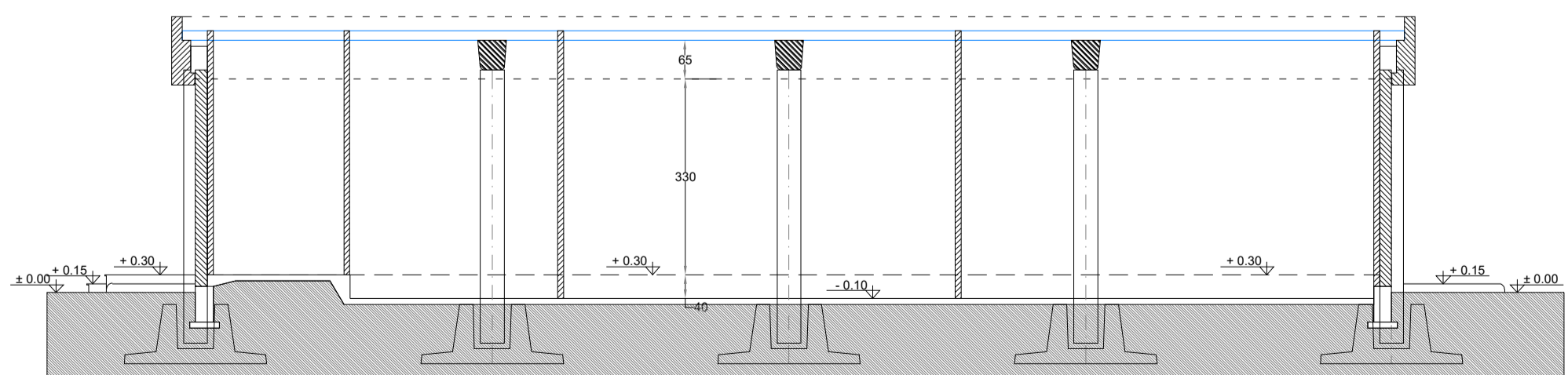
Prospetto B



Prospetto A



Sezione B - B



COMMITTENTE ENGIE TREXENTA SRL PIVA 12367510968 Via Chiese 72, Milano 20126	STUDIO DI PROGETTAZIONE Ing Daniele Cavallo Via C. del Croix, 55 - 72022 - Latiano (BR)

0	Apr-23	EMESSO PER ITER AUTORIZZATIVO	CC	DC	PL
REV.	DATE	DESCRIPTION	BY	CHKD	APP.
REVISIONS					
Impianto per la produzione di energia elettrica da fonte eolica di potenza pari a 42 MW denominato "Marmilla" Comuni di Villanovafornu, Sardara, Sanluri e Furtei (SU)			APPROVED FOR CONSTRUCTION DWG. REV. DATE SIGNATURE ORDER N° SUPPLIER CONTRACT N°		
PROGETTO DEFINITIVO IMPIANTO DI RETE			SUBPROJECT CODE: THIS DWG. SUPERSEDED BY THIS DWG. SUPERSEDES FWD DWG N° SHEET OF		
OBJECT: Tav.16 Edificio Comandi - Piante e prospetti			SCALE: 1:100 REV.		
THIS DRAWING IS THE PROPERTY OF ENGIE TREXENTA SRL AND IS LOANED WITH-OUT CONSIDERATION OTHER THAN THE BORROWER'S AGREEMENT THAT IT SHALL NOT BE REPRODUCED, COPIED, LENT OR DISPOSED OF DIRECTLY OR INDIRECTLY, NOR USED FOR ANY PURPOSE OTHER THAN THAT FOR WHICH IT IS SPECIFICALLY FURNISHED. THE APPARATUS SHOWN IN THE DRAWING IS COVERED BY PATENTS.					
CAD FILE NAME:					