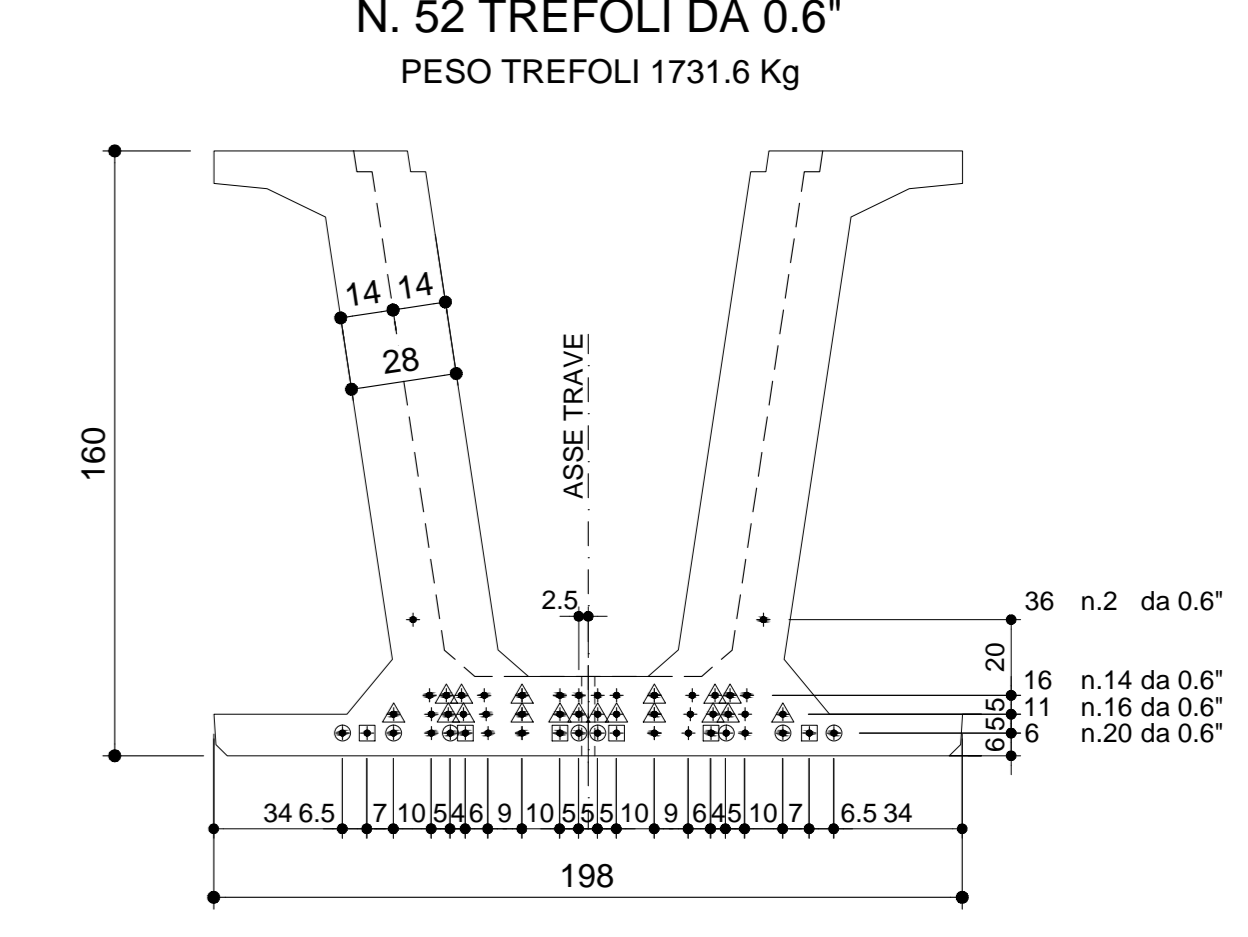


ARMATURA DI PRECOMPRESSIONE



TIPO	N°	Length
▲	18+18	150cm
○	9+8	300cm
□	6+6	400cm

CARATTERISTICHE DEI MATERIALI

CALCESTRUZZO ≥ 28 gg Rck \geq C 45/55
 SFORMO \geq C 35/45
 FERRO B 450C
 TREFOLI $\begin{cases} \text{ROTTURA } f_{pk} = 1800 \text{ MPa} \\ \text{SNERVIAM } f_{0.2} = 1470 \text{ MPa} \\ \text{TENSIONE } f_{pr} = 1373 \text{ MPa} \\ 0.5 = 190000 \text{ Kg} \end{cases}$

VISTA FRONTALE
SCALA 1:20

SEZIONE A-A
SCALA 1:20

SEZIONE B-B
SCALA 1:20

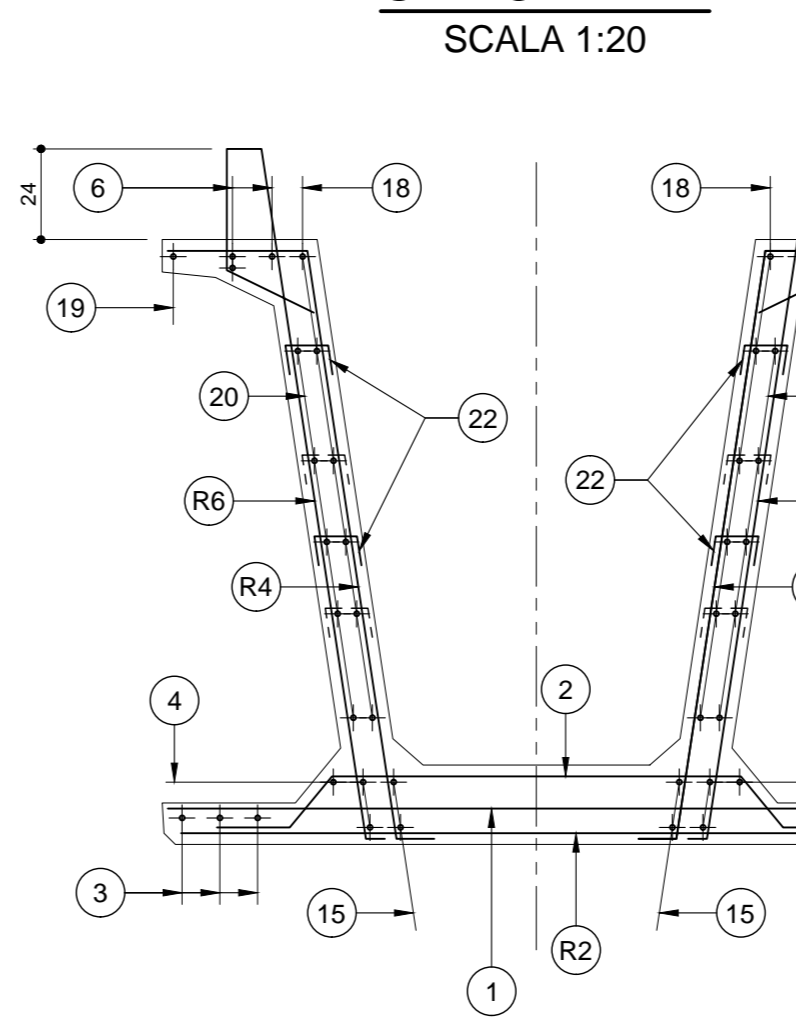
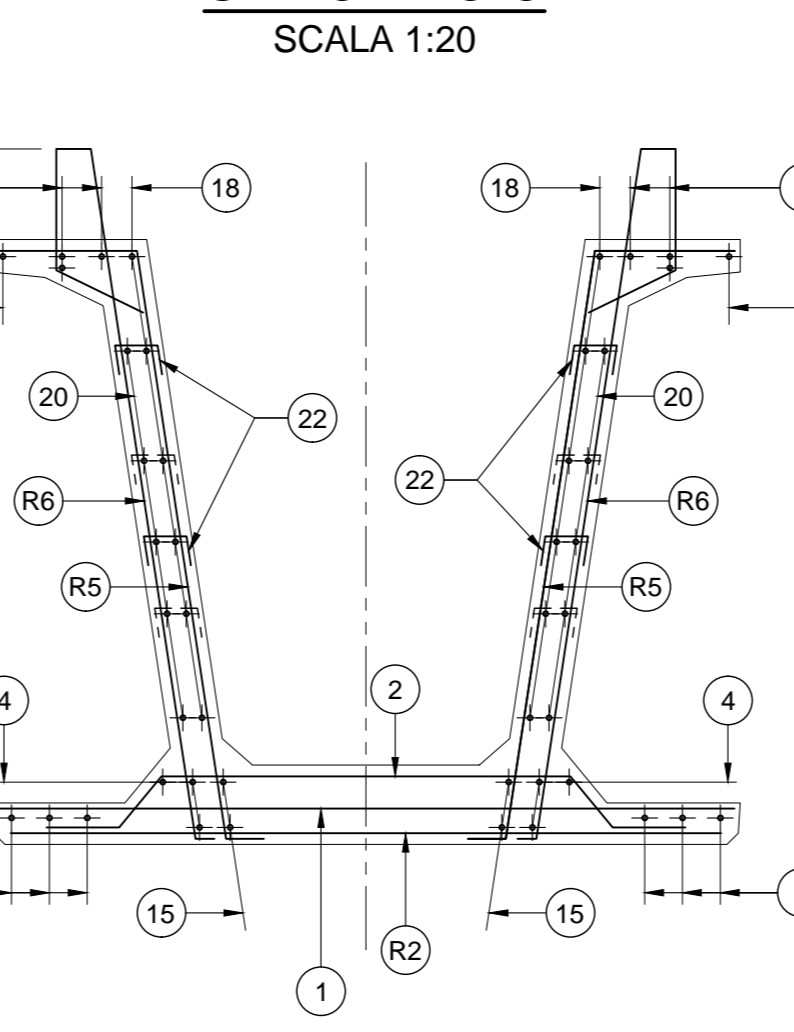
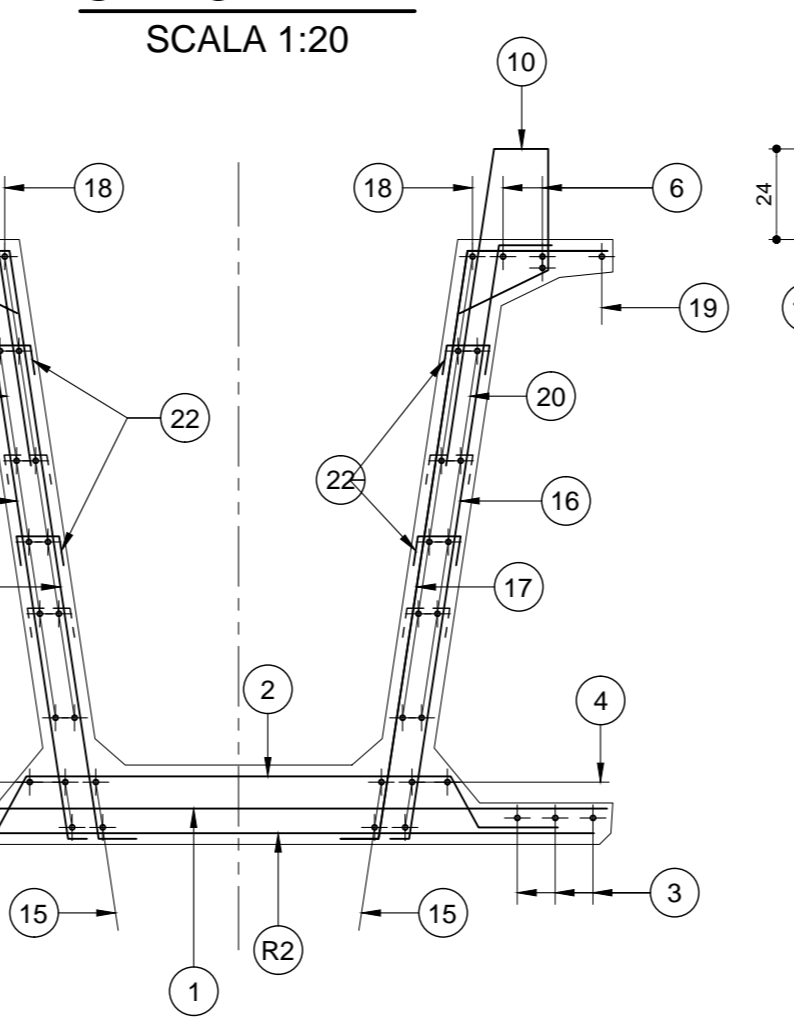
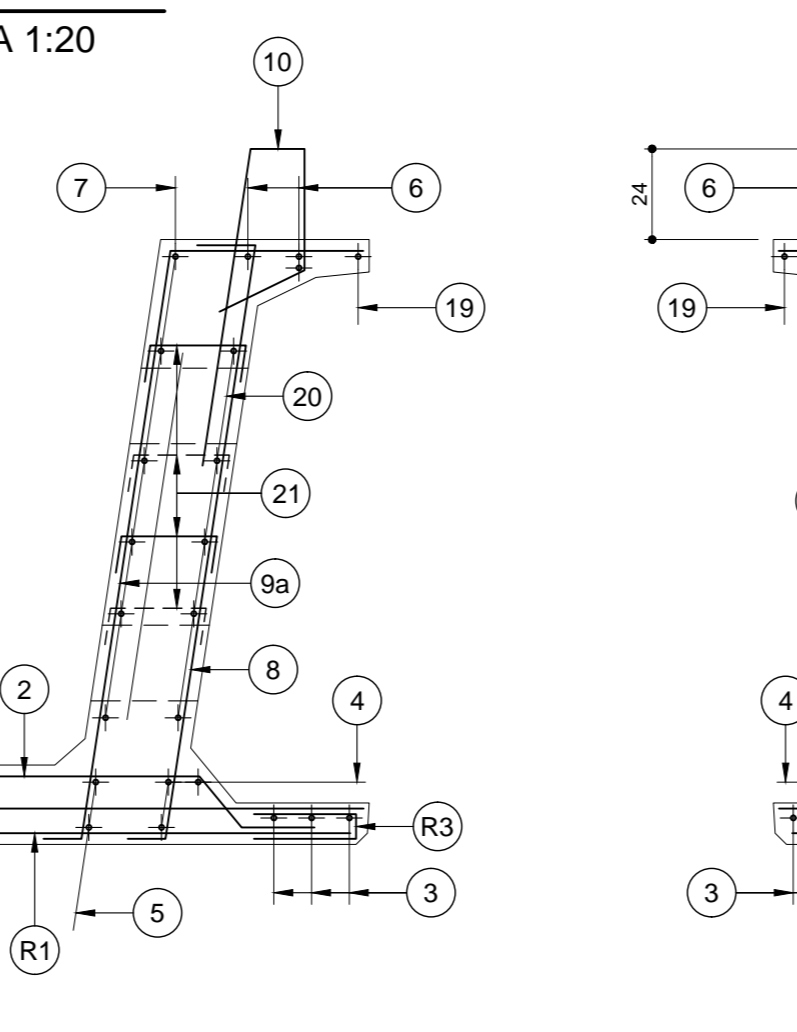
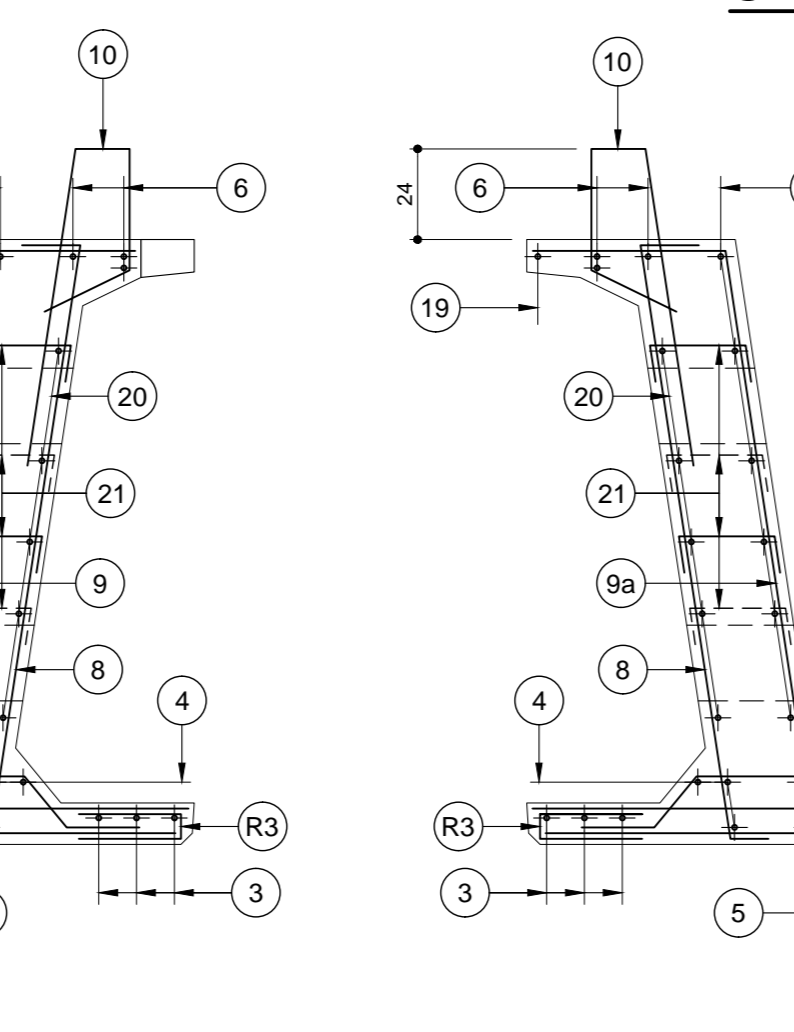
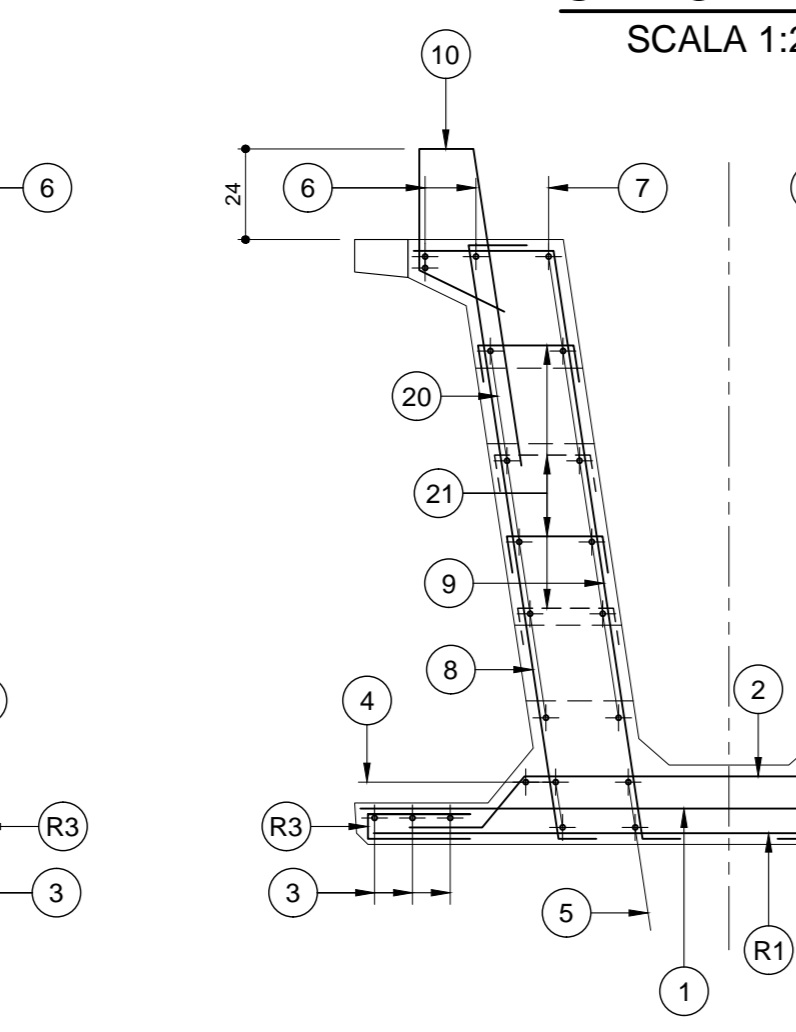
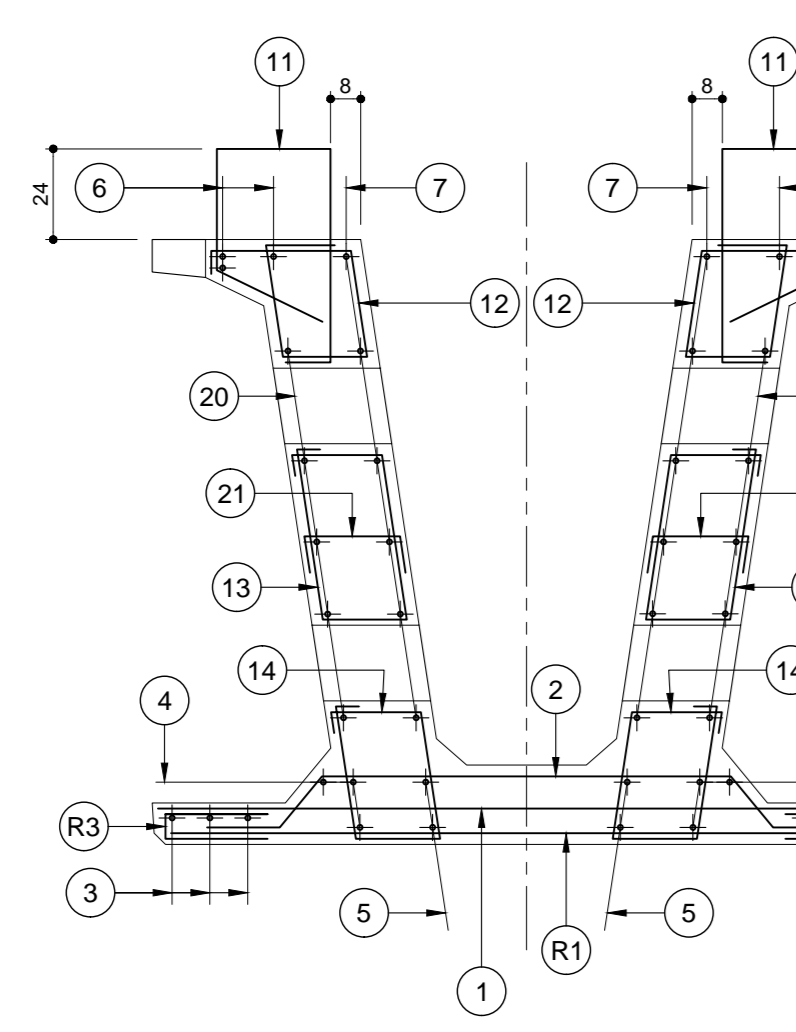
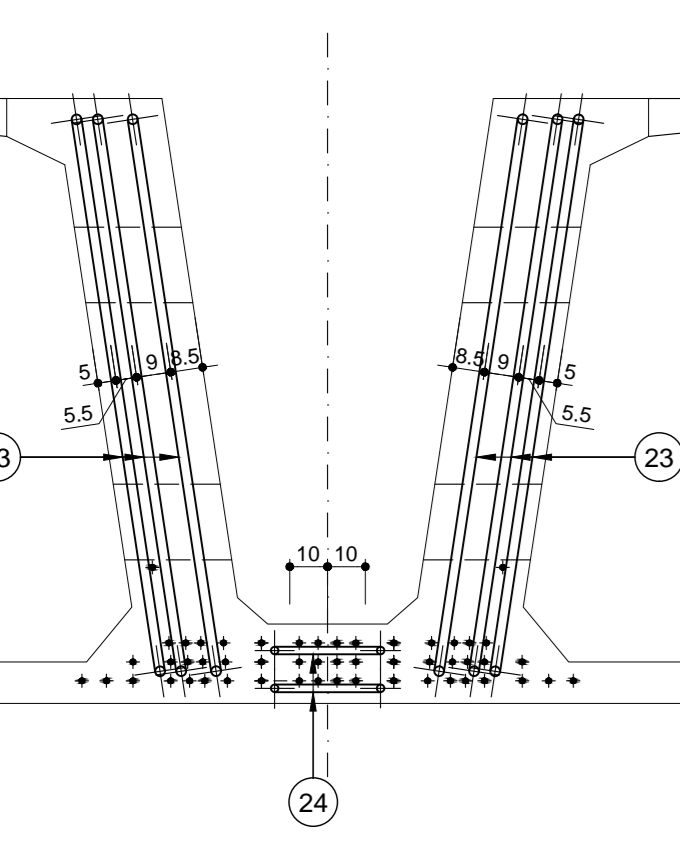
SEZIONE D-D
SCALA 1:20

SEZIONE E-E
SCALA 1:20

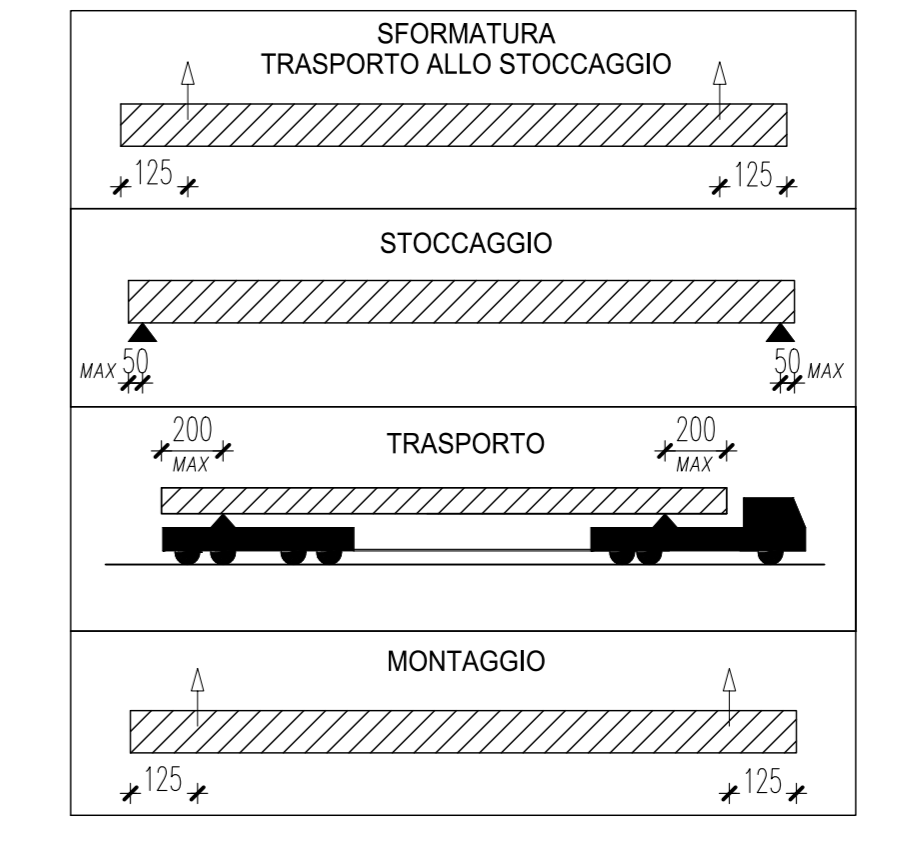
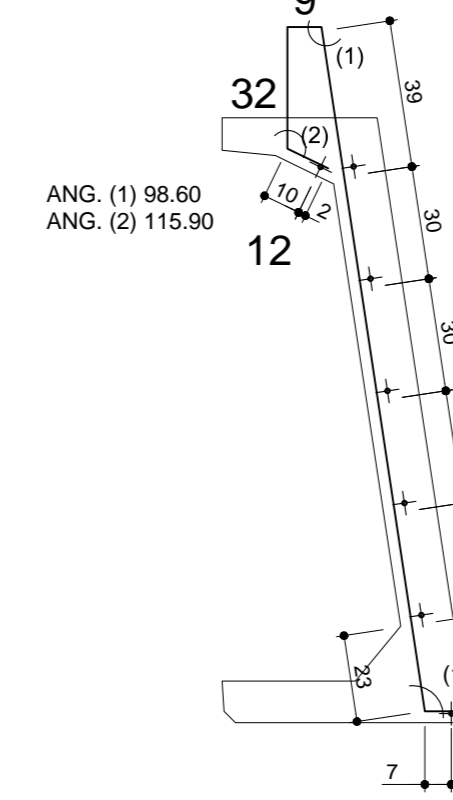
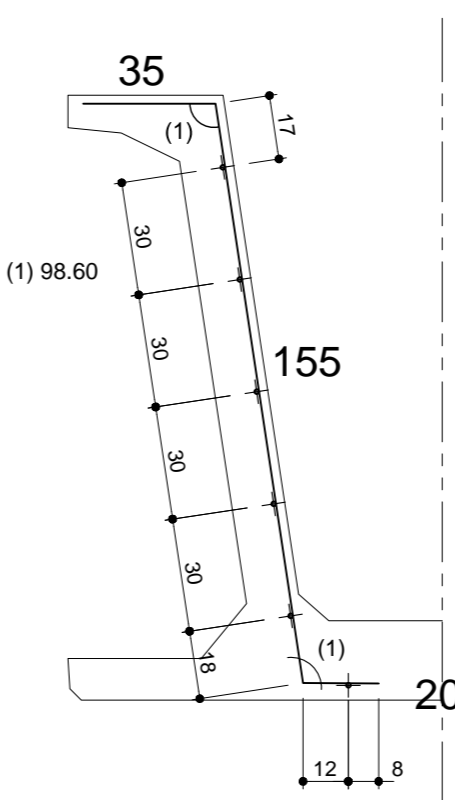
SEZIONE C-C
SCALA 1:20

SEZIONE F-F
SCALA 1:20

Armatura trasverso
SCALA 1:20



DETTAGLIO RETI R4-R5 SCALA 1:20
DETTAGLIO RETE R6 SCALA 1:20

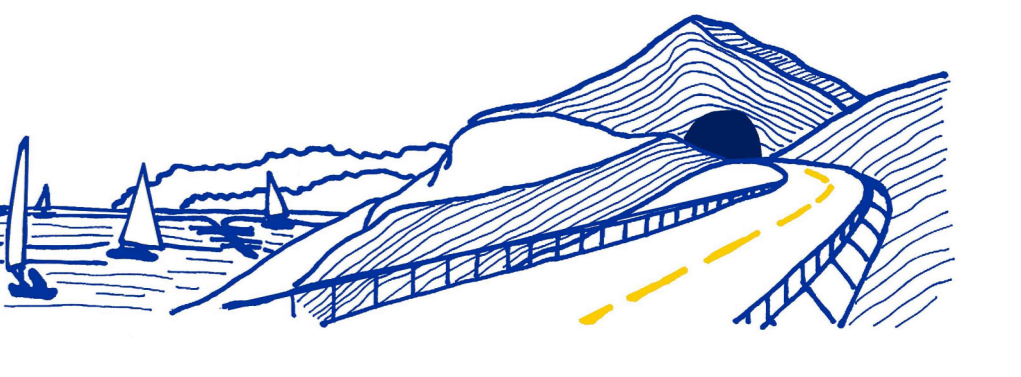


POSIZIONE	1	2	3	4	5	6	7	8	9	9a	10	11	12	13	14	15	16	17	18	19	20	21	22	23	24	25	26
Ø (mm)	12	8	10	8	10	14	14	14	12	14	14	14	14	14	14	14	14	12	10	12	8	8	26	22	10	10	
N. FERRI	11*2	114	11*2	114	3+3	3+3	(2+2)*2	3+3	(6+6)*2	(12+12)*2	(6+6)*2	(16+16)*2	(2+2)*2	(2+2)*2	(2+2)*2	2+2	(4+4)*2	6+6	1+1	5+5	(17+17)*2	130+130	(3+3)*2	2*2	4+4	(6+6)*2	
PASSO (cm)	1/10	1/25	1/10	1/25	-	-	1/20	1/20	1/20	1/20	1/20	-	-	-	-	1/20	1/20	-	-	1/40	1/80	-	-	-	-	1/25	
LUNGH. (m)	1.89	1.80	12.00*2+7.65	12.00*2+8.25	2.50	12.00*2+8.25	2.30	1.90	2.10	2.25	1.80	1.59	1.50	1.56	1.34	12.00*2+5.40	1.85	2.10	12.00*2+5.00	12.00*2+5.90	12.00*2+7.95	0.40	0.27	4.80	5.50	3.50	2.045
SAGOMA	189	180	1200*2+765	1200*2+825	250	1200*2+825	230	190	210	225	180	159	150	156	134	1200*2+540	185	210	1200*2+500	1200*2+590	1200*2+795	40	27	480	550	350	2045
NOTE	PESO (Kg)																										
PESO (Kg)	122.1	105.5	117.2	234.1	24.2	234.1	49.1	110.3	50.8	76.2	139.4	15.4	14.5	15.1	13.0	142.3	35.8	40.7	309.4	36.9	284.0	10.7	27.7	240.4	65.7	17.3	30.3
PESO TOTALE ACCIAIO Kg	2562																										

RETI	R1	R2	R3	R4	R5	R6
Ø Trave (mm)	10/10	6/20	6/20	10/10	10/20	10/20
Ø Long. (mm)	6/25	6/25	6/25	6/25	6/25	6/25
SVILUPPO (m)	1.89	1.89	0.60	2.10	2.10	2.48
LUNGH. (m)	2*1.00	28.55	2*30.45	2*2*4.00	2*16.55	2*24.55
SAGOMA	189	189	6	27	35	182
NOTE	PESO (Kg)					
PESO (Kg)	26.7	107.9	73.1	237.2	276.0	479.5
PESO TOTALE RETI Kg	1200					

VARIANTE ALLA S.S.1 AURELIA (AURELIA BIS)
VIABILITA' DI ACCESSO ALL' HUB PORTUALE DI LA SPEZIA
INTERCONNESSIONE TRA I CASELLI DELLA A-12 E IL PORTO DI LA SPEZIA
3° LOTTO TRA FIALETTINO E IL RACCORDO AUTOSTRADE

PROGETTO ESECUTIVO DI STALCIO E COMPLETAMENTO C - 3° TRATTO
PROGETTO ESECUTIVO **GE265**



COMPAGNIA	RESPONSABILE	PROGETTISTA SPECIALISTA	COORDINATORE DELLA SICUREZZA IN FASE DI PROGETTAZIONE
CESI	Alessandro RONDINO	Franco COLETTI	Domènec TRIBOLU

OPERE MAGGIORI		REVISIONE		SCALA	
Svincolo di Melara		A		VARIE	
Viadotto Rampa N°		A		VARIE	
Impalcato - Armatura Trave M12		A		VARIE	
C	EMMISSIONE	Marzo 2021	G. Naretto	A. Rodino	D. Morgera
A	DESCRIZIONE	DATA	REDATTO	VERIFICATO	APPROVATO