

SOGGETTO PROPONENTE:



SMARTENERGYIT2111 S.R.L.
P.zza Cavour n.1. 20121 Milano (MI)

COMUNE DI GRAVINA IN PUGLIA (BA)
Località MASSERIA PELLICCIARI
PROGETTO PER LA REALIZZAZIONE DI UN NUOVO IMPIANTO AGRIVOLTAICO
E DELLE RELATIVE OPERE DI CONNESSIONE ALLA RTN
POTENZA NOMINALE 35,09 MW
DENOMINAZIONE IMPIANTO - AFV_Pellicciari

PROGETTO DEFINITIVO

PROCEDURA DI AUTORIZZAZIONE UNICA REGIONALE di cui all'art.12 del D.lgs 387/2003 - Linee Guida Decr. MISE 10/09/2010
PROCEDURA DI VALUTAZIONE DI IMPATTO AMBIENTALE PRESSO IL MITE ai sensi dell'art. 31, c.6 del DL 77/21
PROGETTAZIONE AGRIVOLTAICA ai sensi dell'articolo 65, comma 1-quater e 1-quinquies, del decreto-legge 24 gennaio 2012, n. 1
e delle LINEE GUIDA IMPIANTI AGRIVOLTAICI pubblicate dal MITE il 06/06/2022

Serie grafici inserimento urbanistico

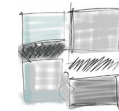
Inquadramento generale impianto Agrivoltaico su PPTR
adottato per le 6 componenti delle 3 strutture del SISTEMA
DELLE TUTELE

scala 1:20.000

codice interno	rev
SUD 002	
denominazione elaborato	
2L7CDF0_StudioInserimentoUrbanistico_07.pdf	
2L7CDF0	

PROGETTAZIONE DELLE OPERE:

Progettazione civile e inserimento ambientale



Arch. Andrea Giuffrida
Via Cannolaro, 33 - 89047 Roccella Ionica (RC)
Via Gandino, 21 - 00167 Roma (RM)



Strutture e supporto tecnico opere civili:
Studio La Monaca Srl
Via Cilicia, 35 - 00179 Roma (RM)

Agronomia e studi colturali

Dott. Agr. Gianfranco Giuffrida
Via Cannolaro, 33 - 89047 Roccella Ionica (RC)

Progettazione elettrica

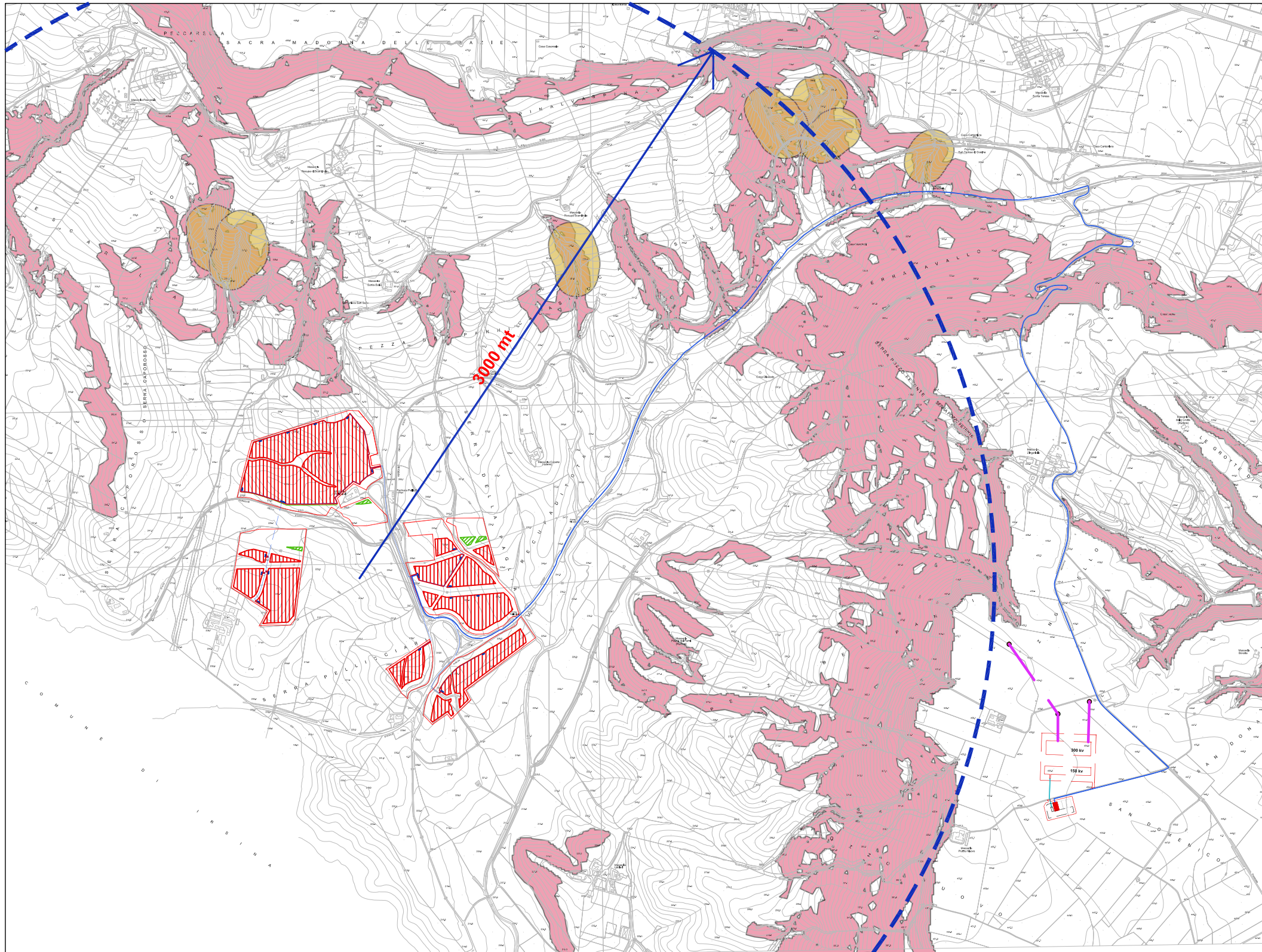
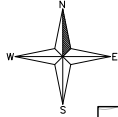







Energy Clief Service Srl
Via F. Corridoni, 93
24124 Bergamo

firma / timbro progettista

firma / timbro committente

02						COD. DOCUMENTO C477_SUD_002 FOGLIO 1 DI 1
01						
00	07/2022	prima emissione	LB-AG	AG	AG	
REV.	DATA	DESCRIZIONE MODIFICA	REDATTO	APPROVATO	AUTORIZZATO	



-  Aree occupate dall'impianto Agrivoltaico
-  Cavidotto di vettoriamento
-  Aree contrattualizzate dal proponente
-  Opere di rete RTN
-  Zona di visibilità teorica R 3000 m (AVIC)

LEGENDA

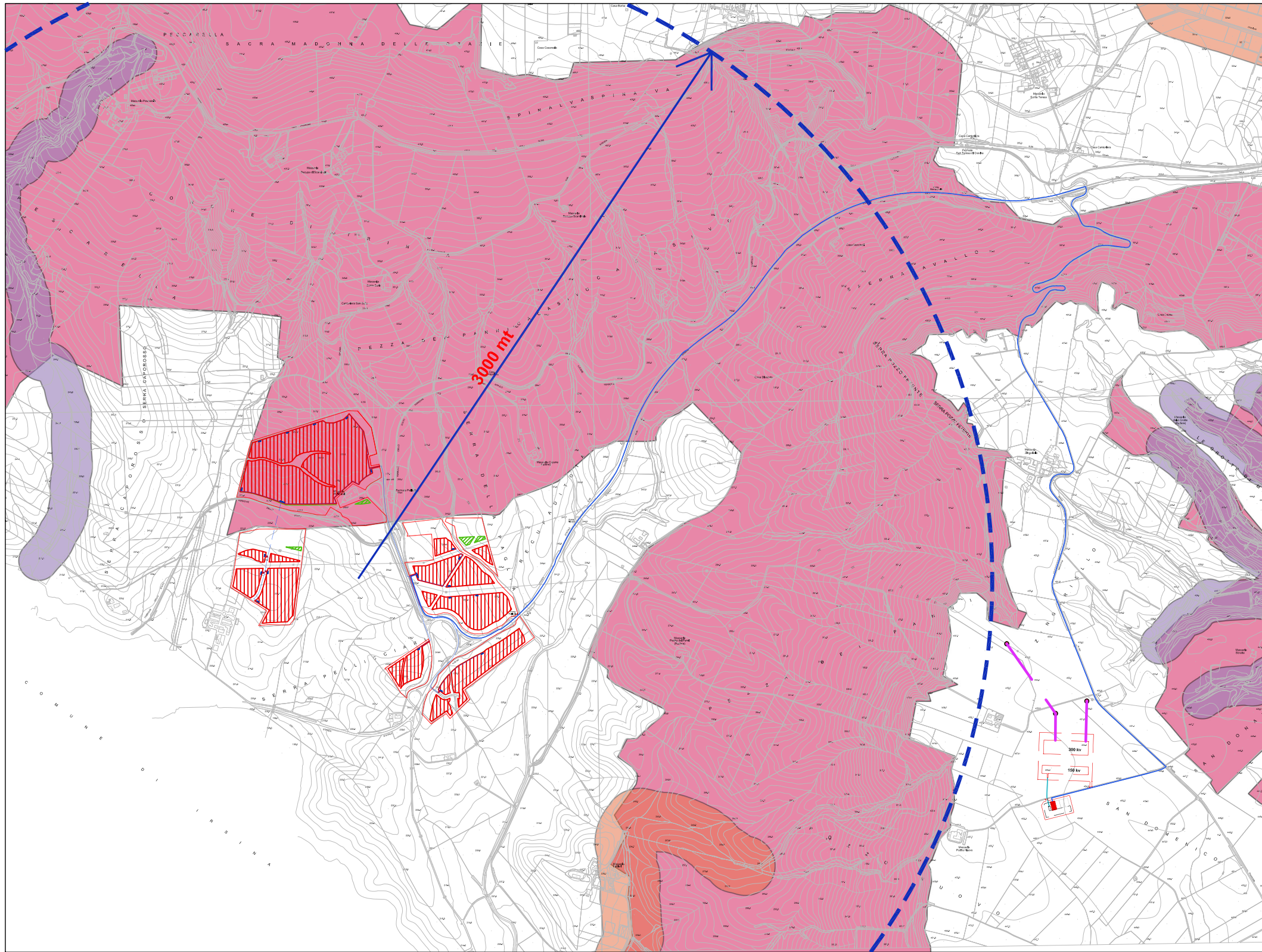
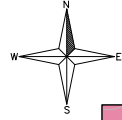
6_1_1_GEOMORFOLOGICHE






-  UCP_geositi_100m
-  UCP_versanti_pendenza20%
-  UCP_Lame_gravine
-  UCP_Inghiottitoi_50m
-  UCP_Grotte_100m
-  UCP_Doline
-  UCP_Cordoni Dunari

SOGGETTO PROPONENTE:



COMUNE DI GRAVINA IN PUGLIA (BA)
Località MASSERIA PELLICCIARI
PROGETTO PER LA REALIZZAZIONE DI UN NUOVO IMPIANTO AGRIVOLTAICO
E DELLE RELATIVE OPERE DI CONNESSIONE ALLA RTN
POTENZA NOMINALE 35,09 MW
DENOMINAZIONE IMPIANTO - AFV_Pellicciari



-  Aree occupate dall'impianto Agrivoltaico
-  Cavidotto di vettoriamento
-  Aree contrattualizzate dal proponente
-  Opere di rete RTN
-  Zona di visibilità teorica R 3000 m (AVIC)

LEGENDA

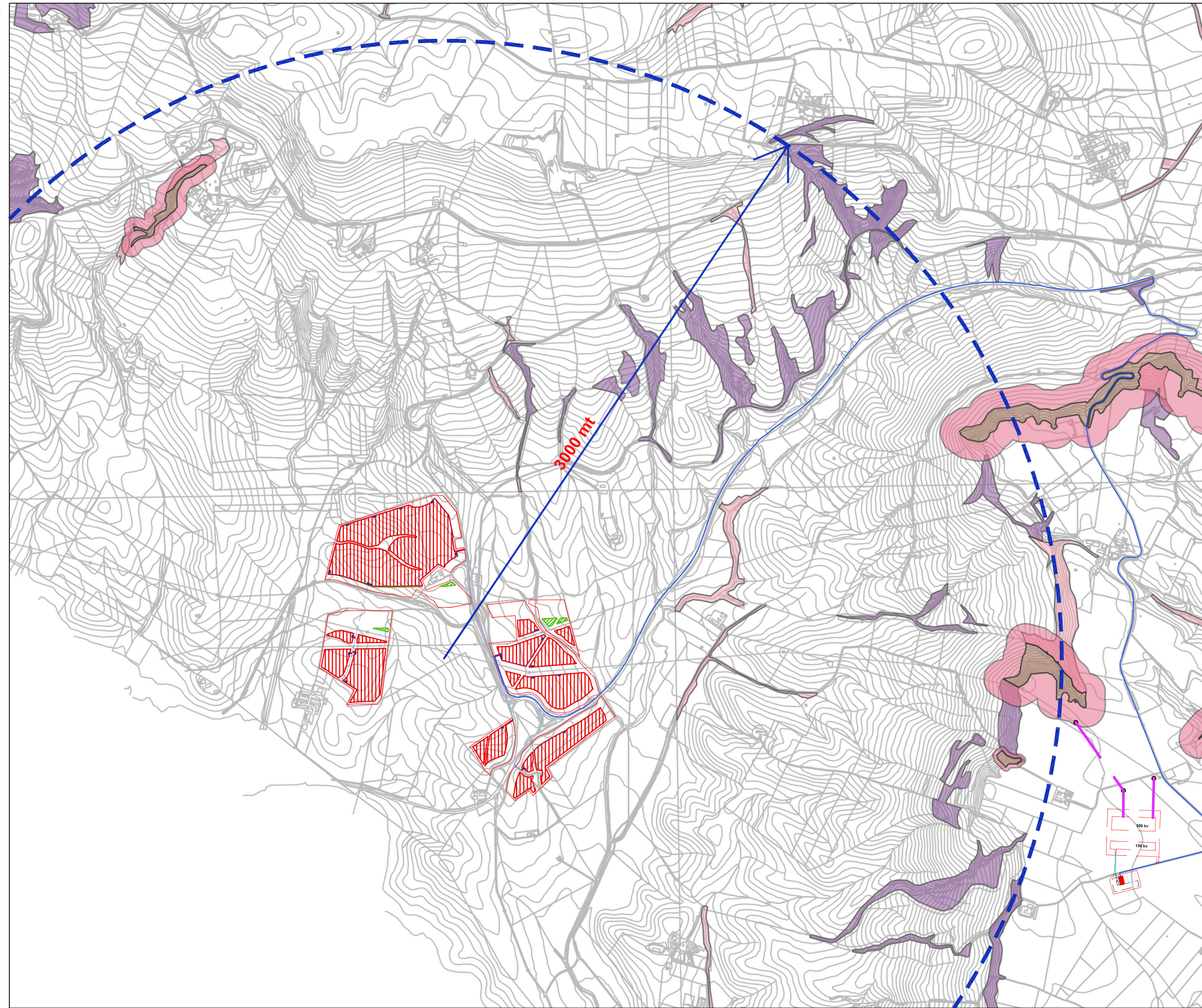
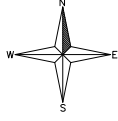
6_1_2_IDROLOGICHE






-  UCP_Sorgenti_25m
-  UCP_connesioneRER_100m
-  BP_142_C_150m
-  BP_142_B_300m
-  BP_142_A_300m
-  UCP_Vincolo idrogeologico

SOGGETTO PROPONENTE:









COMUNE DI GRAVINA IN PUGLIA (BA)
Località MASSERIA PELLICCIARI
PROGETTO PER LA REALIZZAZIONE DI UN NUOVO IMPIANTO AGRIVOLTAICO
E DELLE RELATIVE OPERE DI CONNESSIONE ALLA RTN
POTENZA NOMINALE 35,09 MW
DENOMINAZIONE IMPIANTO - AFV_Pellicciari



-  Aree occupate dall'impianto Agrivoltaico
-  Cavidotto di vettoriamento
-  Aree contrattualizzate dal proponente
-  Opere di rete RTN
-  Zona di visibilità teorica R 3000 m (AVIC)

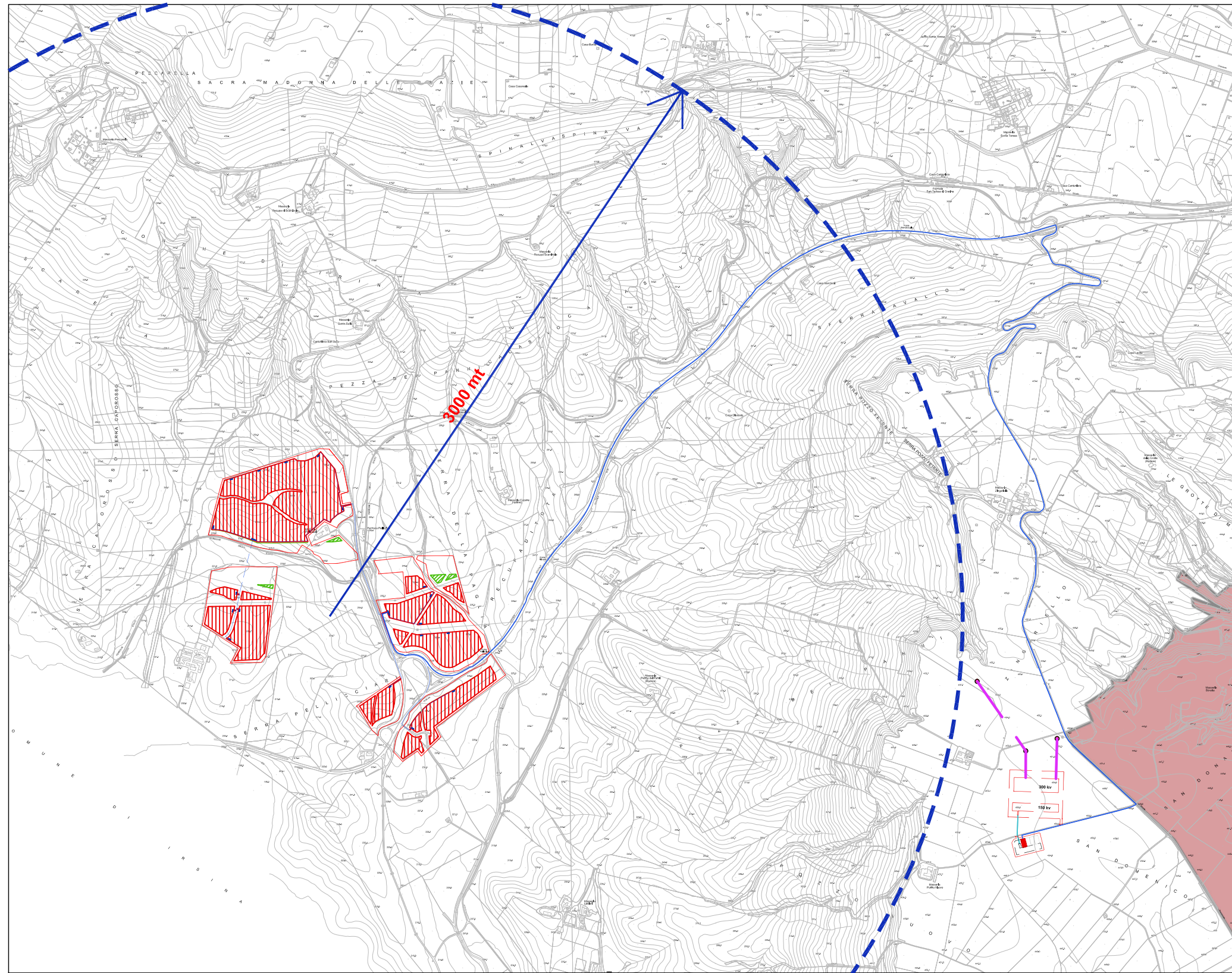
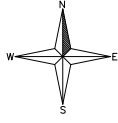
LEGENDA
6_2_1_BOTANICO_VEGETAZIONALI






-  UCP_rispetto boschi
-  UCP_Pascoli_naturali
-  UCP_Formazioni arbustive
-  UCP_Aree_Umide
-  BP_142_I
-  BP_142_G

SOGGETTO PROPONENTE:



COMUNE DI GRAVINA IN PUGLIA (BA)
Località MASSERIA PELLICCIARI
PROGETTO PER LA REALIZZAZIONE DI UN NUOVO IMPIANTO AGRIVOLTAICO
E DELLE RELATIVE OPERE DI CONNESSIONE ALLA RTN
POTENZA NOMINALE 35,09 MW
DENOMINAZIONE IMPIANTO - AFV_Pellicciari



-  Aree occupate dall'impianto Agrivoltaico
-  Cavidotto di vettoriamento
-  Aree contrattualizzate dal proponente
-  Opere di rete RTN
-  Zona di visibilità teorica R 3000 m (AVIC)

LEGENDA

- 6_2_2_AREE_PROTETTE_SITI_NATURALISTICI**
-  UCP_rispetto parchi_100m
 -  UCP_rilevanza naturalistica
 -  BP_142_F

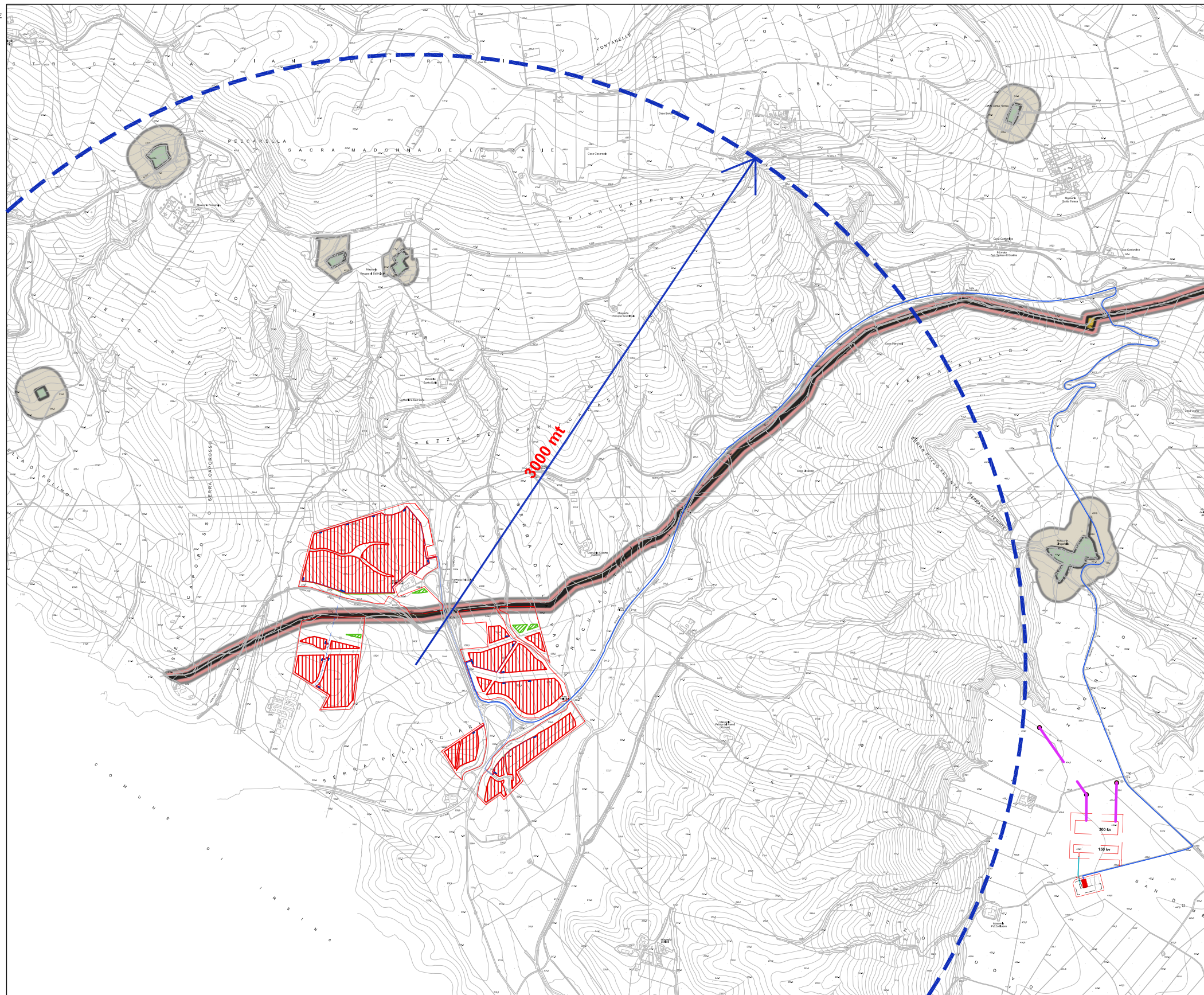
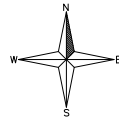
rapp. 1:20.000






SOGGETTO PROPONENTE:

SMARTENERGY2111 S.R.L.
P.zza Cavour n.1, 20121 Milano (MI)












COMUNE DI GRAVINA IN PUGLIA (BA)
Località MASSERIA PELLICCIARI
**PROGETTO PER LA REALIZZAZIONE DI UN NUOVO IMPIANTO AGRIVOLTAICO
E DELLE RELATIVE OPERE DI CONNESSIONE ALLA RTN**
POTENZA NOMINALE 35,09 MW
DENOMINAZIONE IMPIANTO - AFV_Pellicciari

<small> foglio</small>	04
Inquadramento su aree protette siti naturalistici	



-  Aree occupate dall'impianto Agrivoltaico
-  Cavidotto di vettoriamento
-  Aree contrattualizzate dal proponente
-  Opere di rete RTN
-  Zona di visibilità teorica R 3000 m (AVIC)

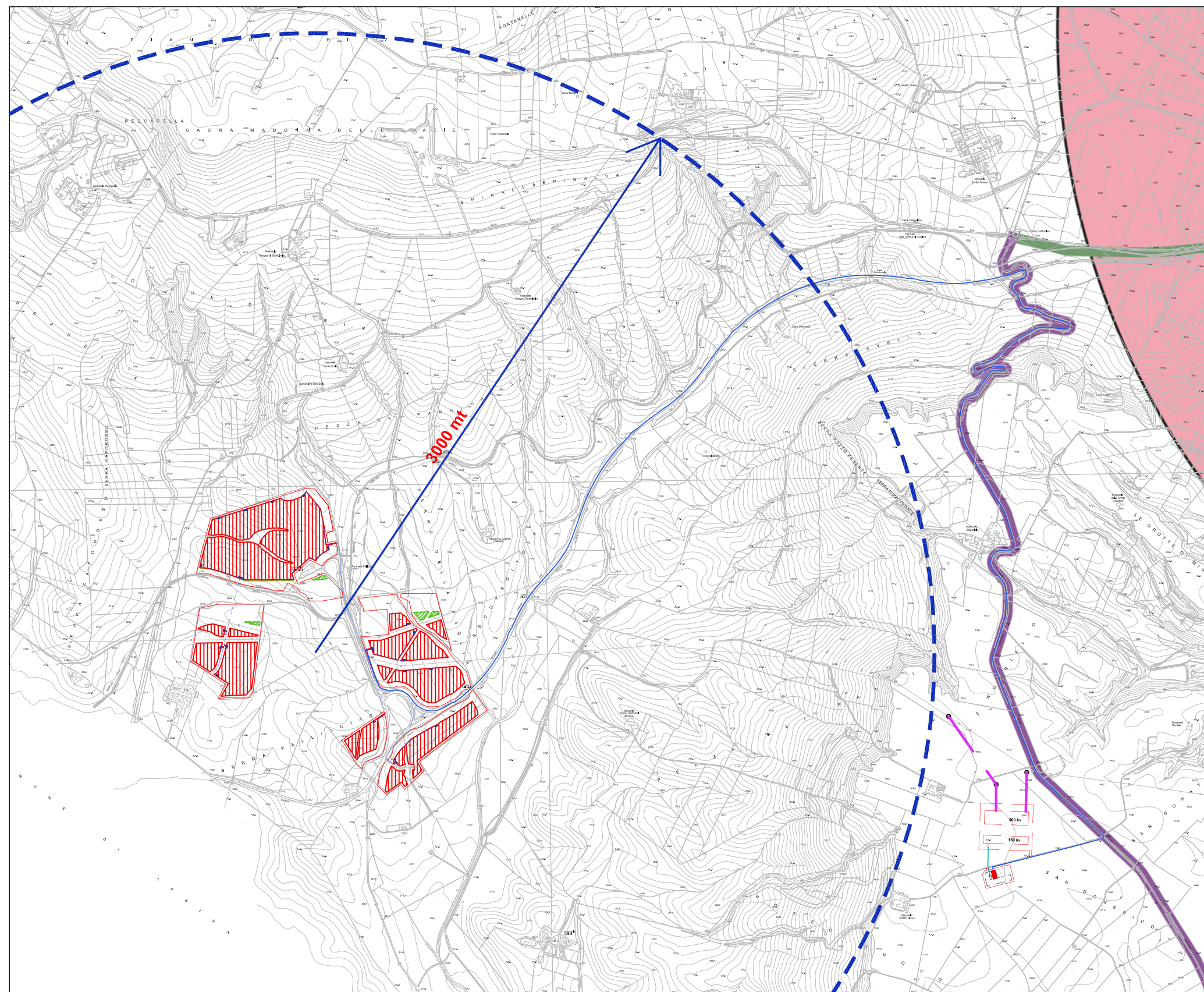
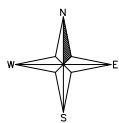
LEGENDA






- 6_3_1_CULTURALI**
-  UCP_stratificazione insediativa_siti storico culturali
 -  UCP_stratificazione insediativa_rete tratturi
 -  UCP_paesaggi rurali
 -  UCP_citta consolidata
 -  UCP_ree_a_rischio_archeologico
 -  UCP_area_rispetto_zone interesse archeologico
 -  UCP_area_rispetto_siti storico culturali
 -  UCP_area_rispetto_rete tratturi
 -  BP_142_M
 -  BP_142_H_VALIDATE
 -  BP_142_H
 -  BP_136

SOGGETTO PROPONENTE:
























COMUNE DI GRAVINA IN PUGLIA (BA)
Località MASSERIA PELLICCIARI
PROGETTO PER LA REALIZZAZIONE DI UN NUOVO IMPIANTO AGRIVOLTAICO
E DELLE RELATIVE OPERE DI CONNESSIONE ALLA RTN
POTENZA NOMINALE 35,09 MW
DENOMINAZIONE IMPIANTO - AFV_Pellicciari




-  Aree occupate dall'impianto Agrivoltaico
-  Cavidotto di vettoriamento
-  Aree contrattualizzate dal proponente
-  Opere di rete RTN
-  Zona di visibilità teorica R 3000 m (AVIC)

LEGENDA

6_3_2_PERCETTIVE

-  UCP_strade valenza paesaggistica_pol
-  UCP_strade valenza paesaggistica
-  UCP_strade panoramiche_pol
-  UCP_strade panoramiche
-  UCP_luoghi panoramici_pol
-  UCP_luoghi panoramici
-  UCP_coni visuali
-  UCP_strade valenza paesaggistica_pol
-  UCP_strade valenza paesaggistica
-  UCP_strade panoramiche_pol
-  UCP_strade panoramiche
-  UCP_luoghi panoramici_pol
-  UCP_luoghi panoramici
-  UCP_coni visuali
-  UCP_strade valenza paesaggistica_pol
-  UCP_strade valenza paesaggistica
-  UCP_strade panoramiche_pol
-  UCP_strade panoramiche
-  UCP_luoghi panoramici_pol
-  UCP_luoghi panoramici
-  UCP_coni visuali

rapp. 1:20.000

<small>SOGGETTO PROPONENTE:</small>	
 <small>SMARTENERGY2111 S.R.L. P.zza Cavour n. 1, 20121 Milano (MI)</small>	
COMUNE DI GRAVINA IN PUGLIA (BA) Località MASSERIA PELLICCIARI	
PROGETTO PER LA REALIZZAZIONE DI UN NUOVO IMPIANTO AGRIVOLTAICO E DELLE RELATIVE OPERE DI CONNESSIONE ALLA RTN	
POTENZA NOMINALE 35,09 MW	
DENOMINAZIONE IMPIANTO - AFV_Pellicciari	
<small> foglio</small>	06 Inquadramento su componenti percettive