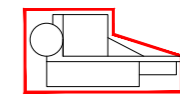
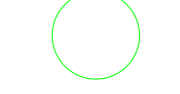
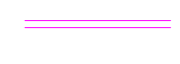


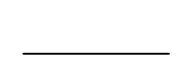





**LEGENDA**

-  MA n°...  
Piazzola di montaggio
-  Rotore WTG - D = 172 m
-  Ingombro viabilità di progetto
-  Linea MT su strada esistente e di nuova realizzazione
-  Linea AT su strada esistente e di nuova realizzazione
-  Confini Comunali
-  Confini Particelle Catastali
-  SEU
-  SE RTN 150 kV BUDDUSO'

AUTORIZZAZIONE UNICA EX D. LGS. N. 387/2003

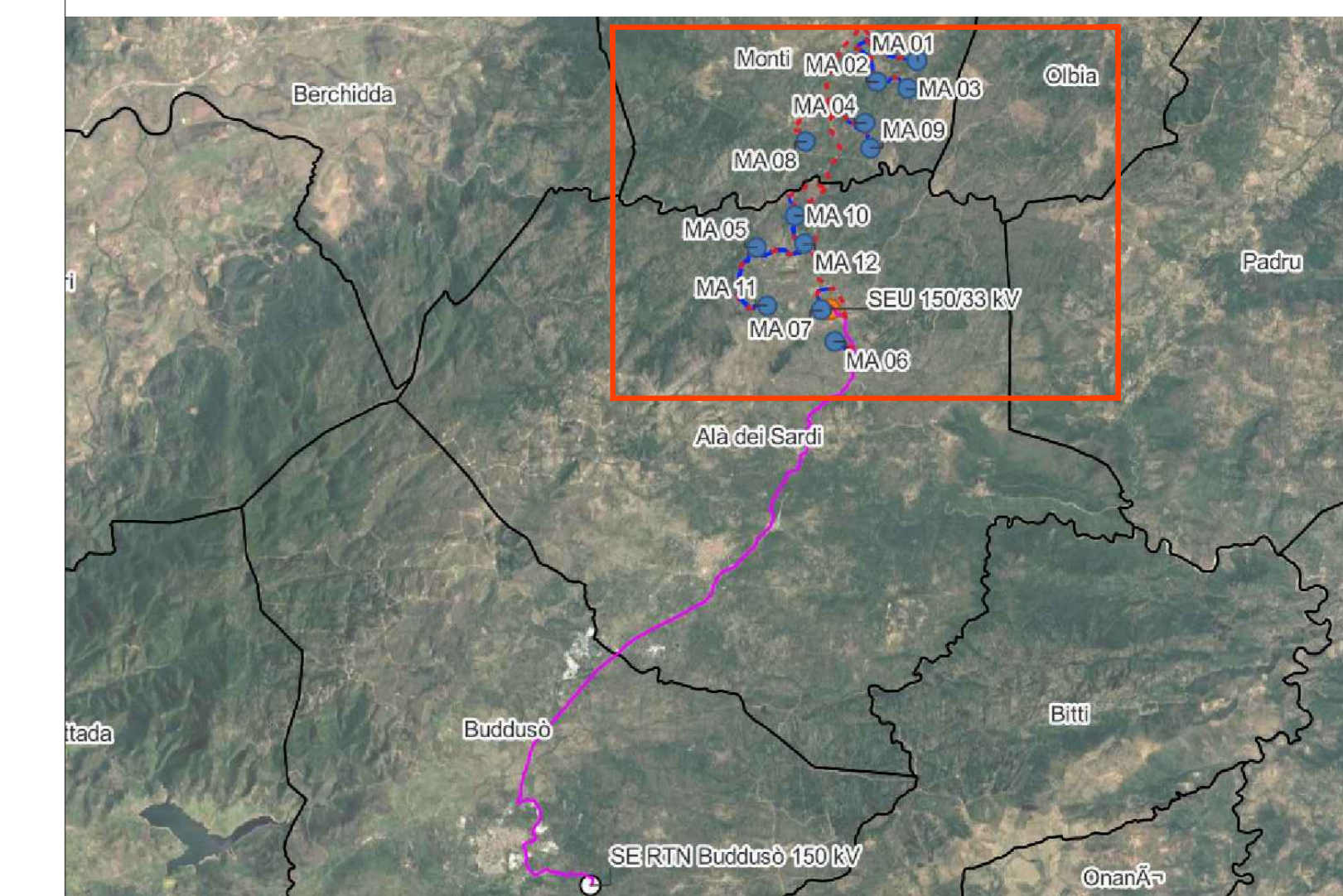


PROGETTO DEFINITIVO  
PARCO EOLICO MONTI ALA' DEI SARDI

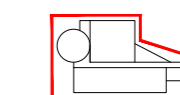




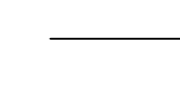



Titolo elaborato:  
INQUADRAMENTO GENERALE SU CATASTALE

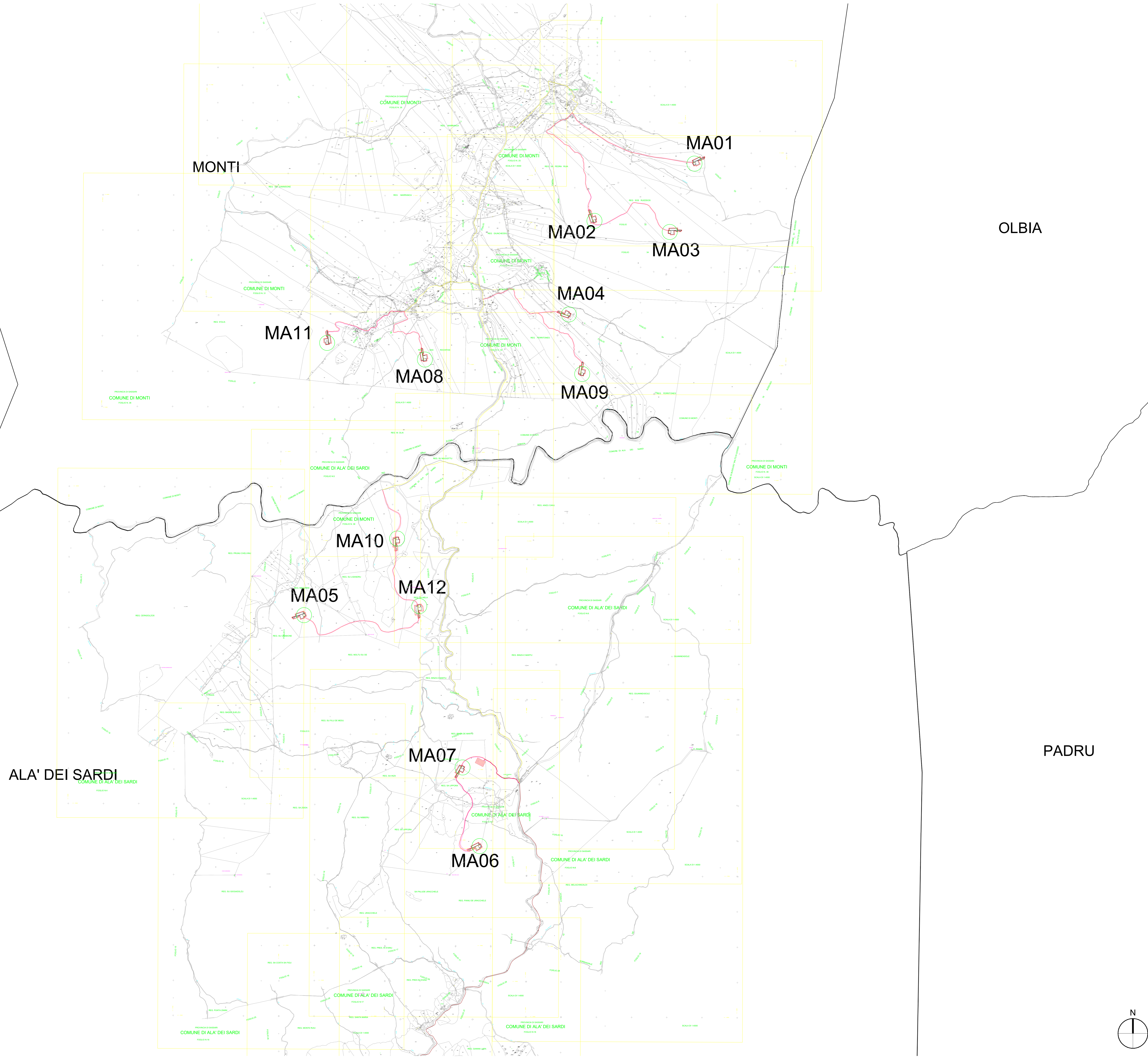
CG	GD	GD	Prima emissione	12/05/2023	00
REDDATTO	CONTR.	APPROV.	DESCRIZIONE REVISIONE DOCUMENTO	DATA	REV

<p><b>PROPONENTE</b></p>  <p><b>PONENTE PRIME S.R.L.</b> Via A. De Gasperi n.8 74023 Grottaglie (TA)</p>	<p><b>CONSULENZA</b></p>  <p><b>GE.CO.D'OR S.R.L.</b> Via A. De Gasperi n.8 74023 Grottaglie (TA)</p> <p><b>PROGETTISTA</b> Ing. Gaetano D'Oronzio Via Goito 14 - Colobraro (MT)</p>
---	---



LEGENDA

-  MA n°...  
Piazzola di montaggio
-  Rotore WTG - D = 172 m
-  Ingombro viabilità di progetto
-  Linea MT su strada esistente e di nuova realizzazione
-  Linea AT su strada esistente e di nuova realizzazione
-  Confini Comunali
-  Confini Particelle Catastali
-  SEU
-  SE RTN 150 kV BUDDUSO'



AUTORIZZAZIONE UNICA EX D. LGS. N. 387/2003

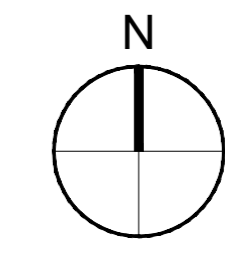


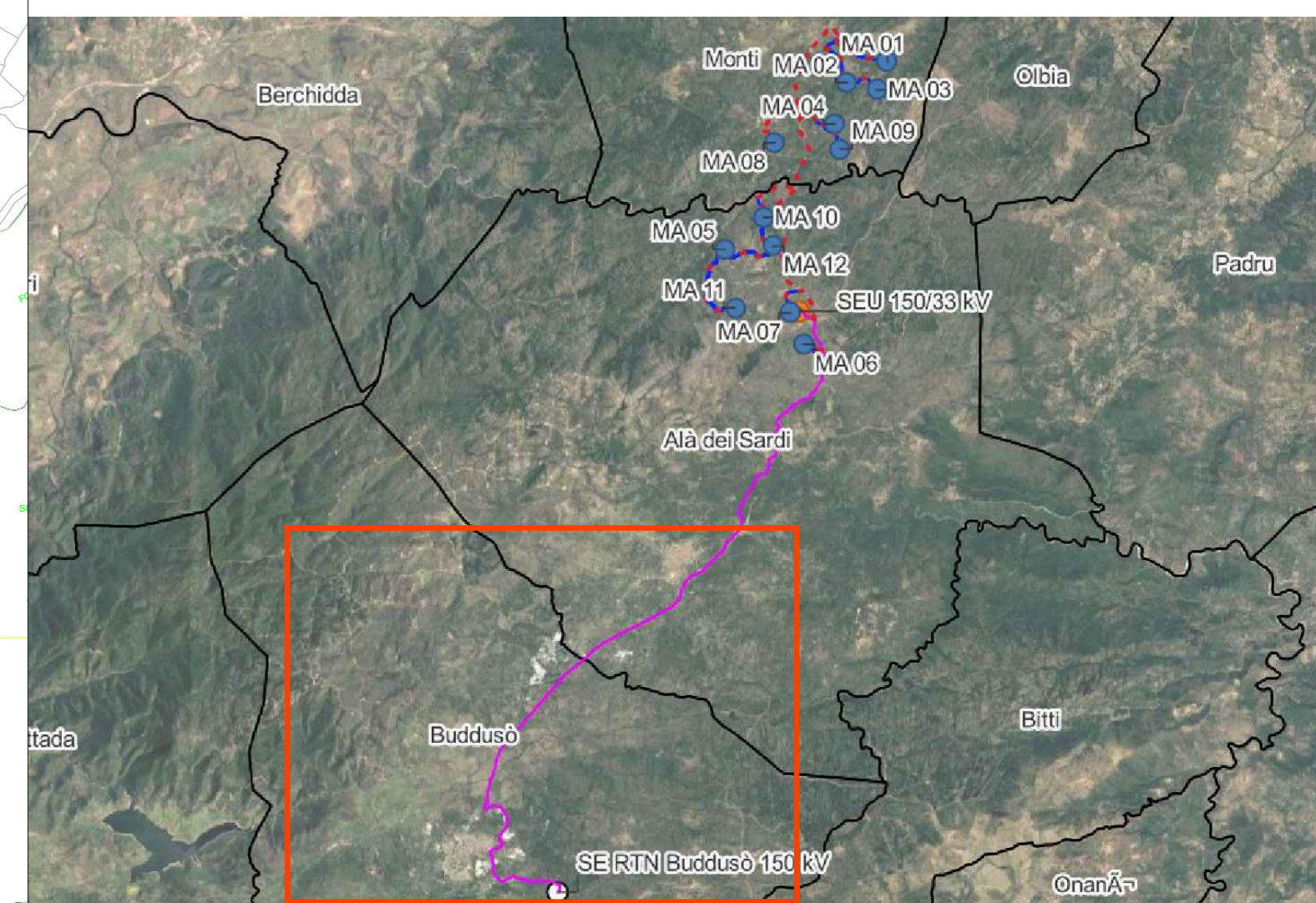
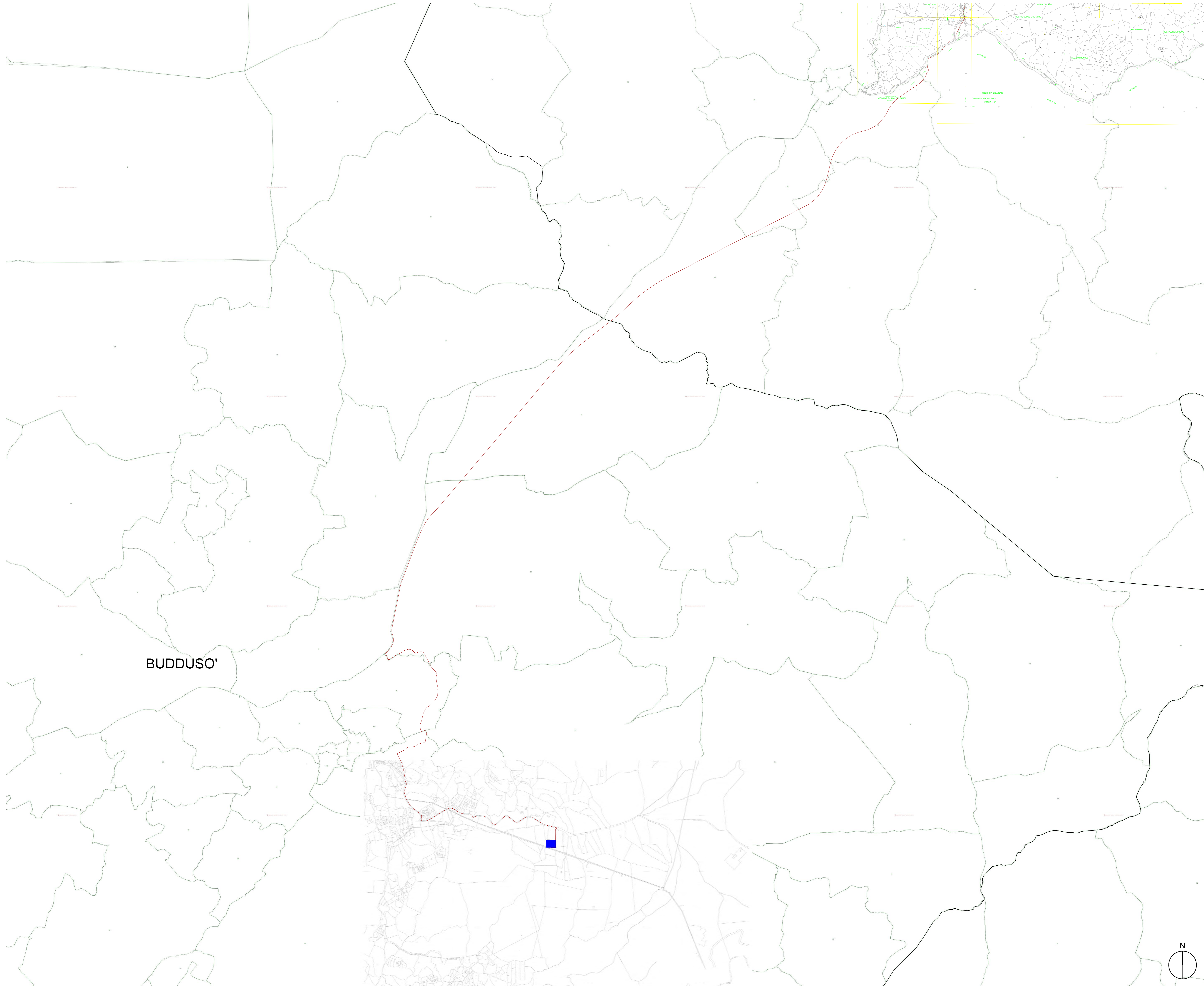
PROGETTO DEFINITIVO  
PARCO EOLICO MONTI ALA' DEI SARDI

Titolo elaborato:  
INQUADRAMENTO GENERALE SU CATASTALE

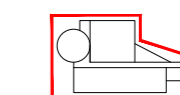




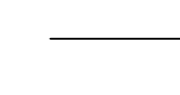



CG	GD	GD	Prima emissione	12/05/2023	00
REDDATTO	CONTR.	APPROV.	DESCRIZIONE REVISIONE DOCUMENTO	DATA	REV

<p><b>PROPONENTE</b></p>  <p><b>PONENTE PRIME S.R.L.</b> Via A. De Gasperi n.8 74023 Grottaglie (TA)</p>	<p><b>CONSULENZA</b></p>  <p><b>GE.CO.D'OR. S.R.L.</b> Via A. De Gasperi n.8 74023 Grottaglie (TA)</p> <p><b>PROGETTISTA</b> Ing. Gaetano D'Oronzio Via Goito 14 - Colobraro (MT)</p>
---	--





LEGENDA

-  MA n°...  
Piazzola di montaggio
-  Rotore WTG - D = 172 m
-  Ingombro viabilità di progetto
-  Linea MT su strada esistente e di nuova realizzazione
-  Linea AT su strada esistente e di nuova realizzazione
-  Confini Comunali
-  Confini Particelle Catastali
-  SEU
-  SE RTN 150 kV BUDDUSO'

BUDDUSO'

AUTORIZZAZIONE UNICA EX D. LGS. N. 387/2003



PROGETTO DEFINITIVO  
PARCO EOLICO MONTI ALA' DEI SARDI

Titolo elaborato:  
INQUADRAMENTO GENERALE SU CATASTALE

CG	GD	GD	Prima emissione	12/05/2023	00
REDDATTO	CONTR.	APPROV.	DESCRIZIONE REVISIONE DOCUMENTO	DATA	REV

<p><b>PROPONENTE</b></p>  <p><b>PONENTE PRIME S.R.L.</b> Via A. De Gasperi n.8 74023 Grottaglie (TA)</p>	<p><b>CONSULENZA</b></p>  <p><b>GE.CO.D'OR S.R.L.</b> Via A. De Gasperi n.8 74023 Grottaglie (TA)</p> <p><b>PROGETTISTA</b> Ing. Gaetano D'Oronzio Via Goito 14 - Colobraro (MT)</p>
---	---

