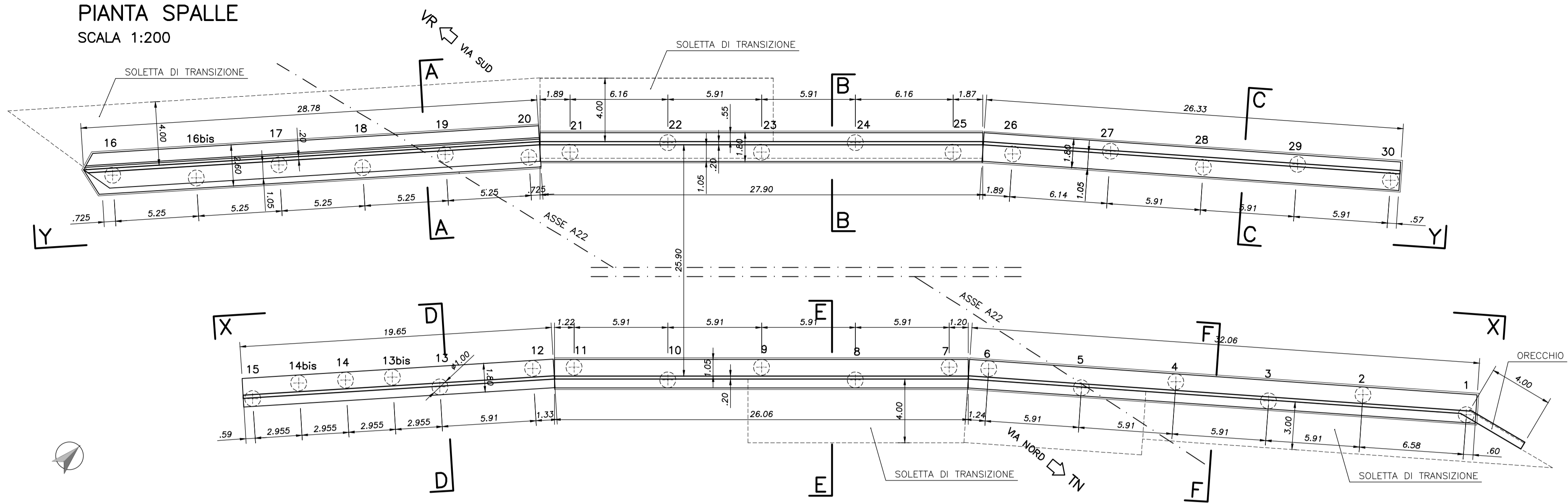
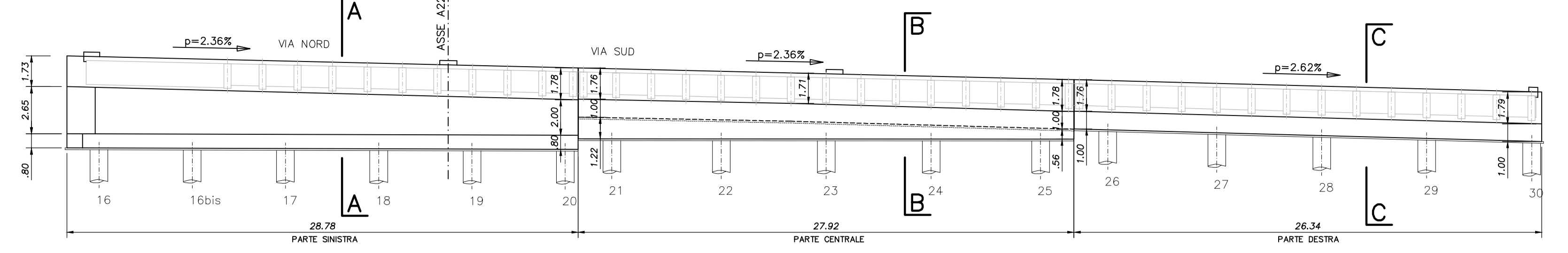


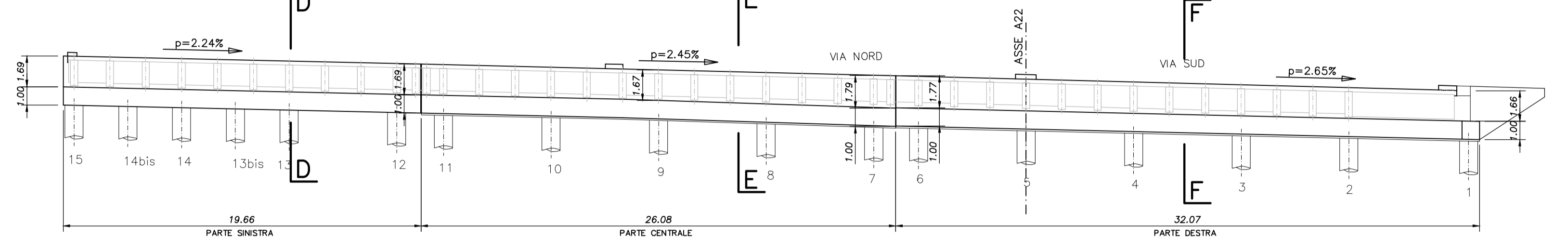
PIANTA SPALLE  
SCALA 1:200



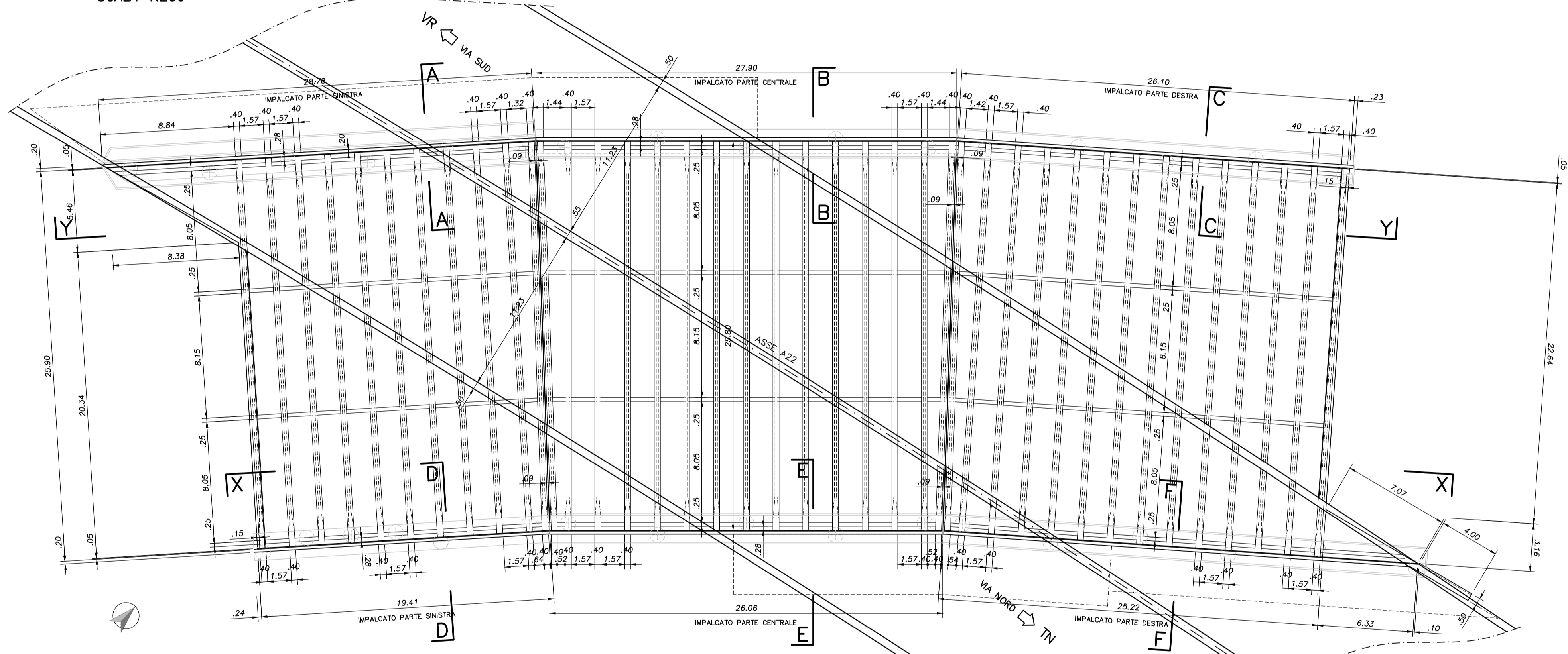
PROSPETTO Y-Y SPALLA LATO VR  
SCALA 1:200



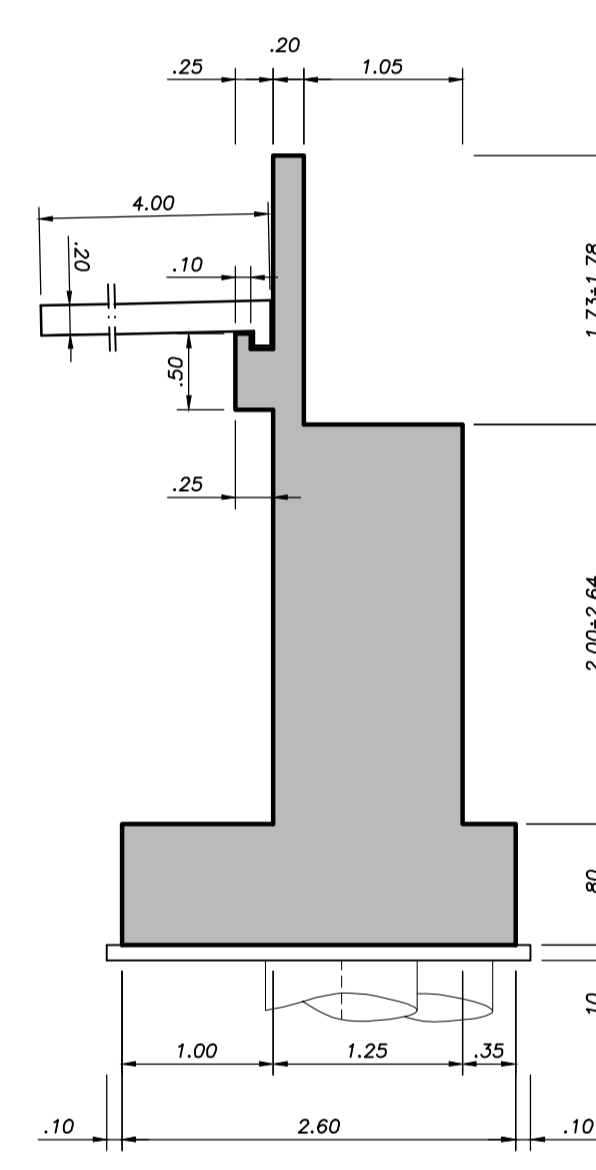
PROSPETTO X-X SPECCHIATO SPALLA LATO TN  
SCALA 1:200



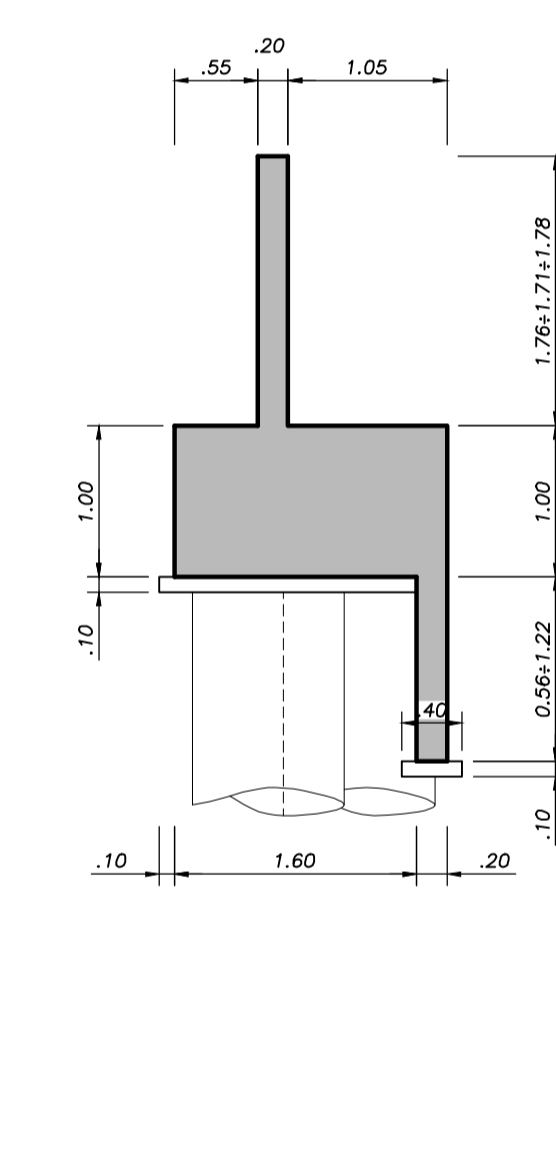
PIANTA IMPALCATO  
SCALA 1:200



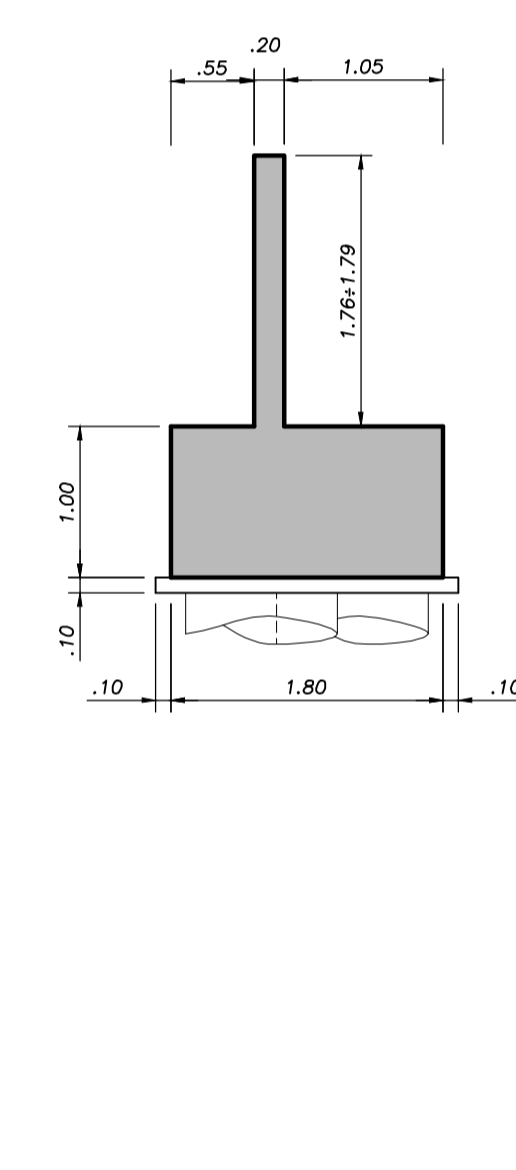
SPALLA SEZ. A-A  
SCALA 1:50



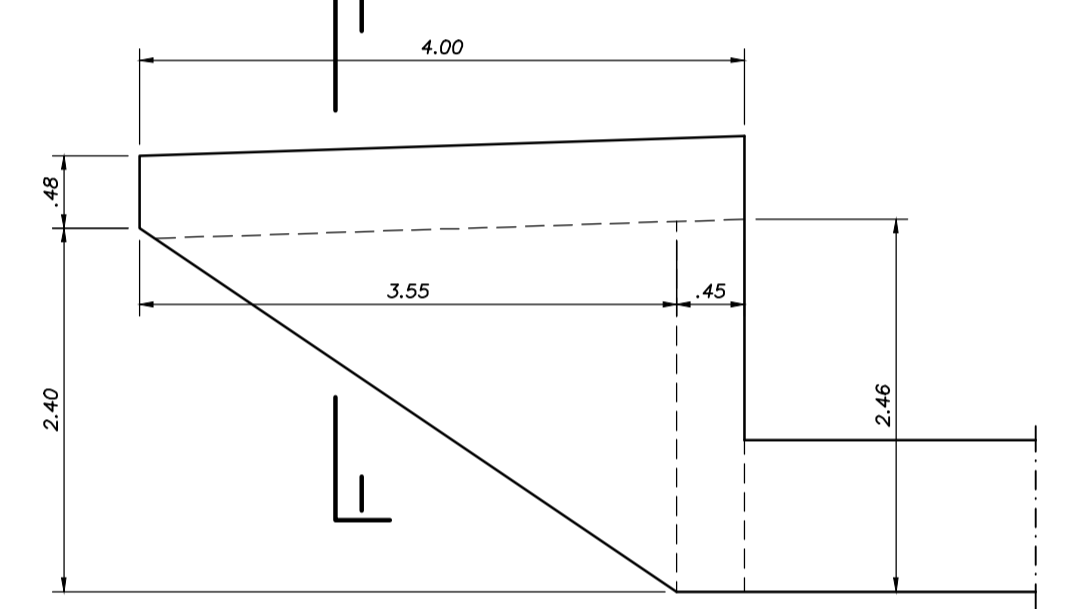
SPALLA SEZ. B-B  
SCALA 1:50



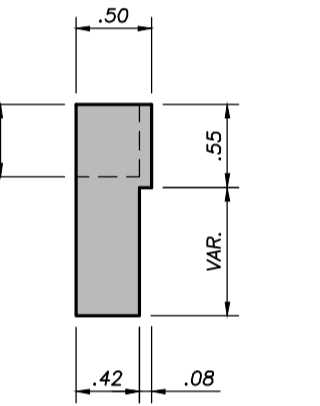
SPALLA SEZ. C-C  
SCALA 1:50



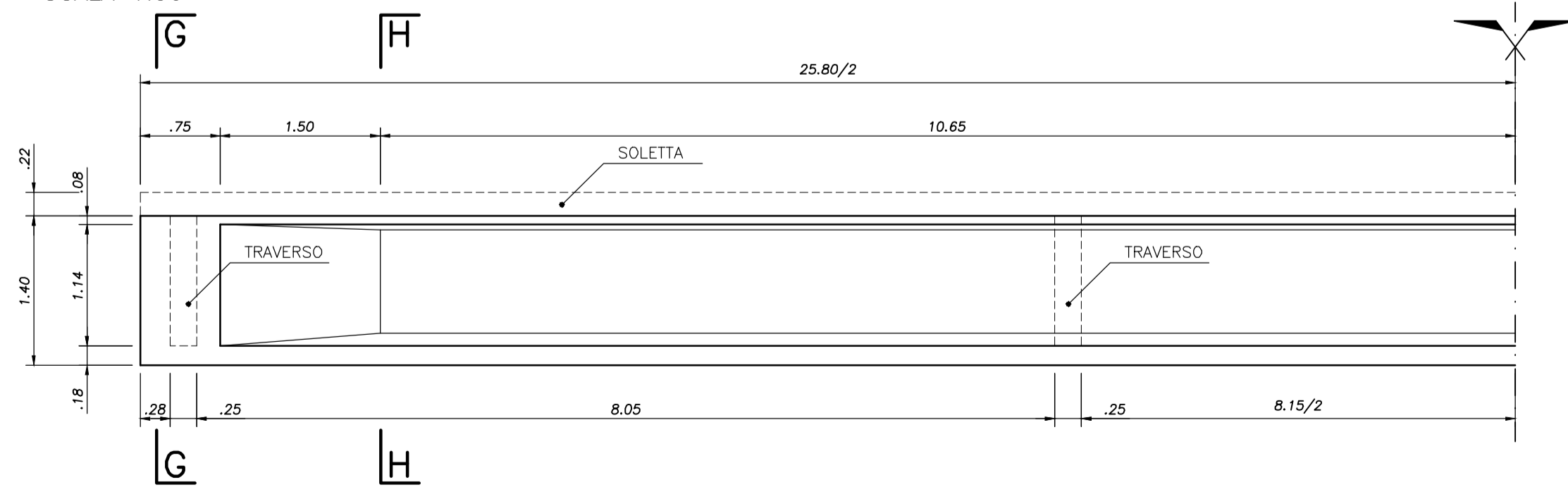
ORECCHIO LATO TN  
SCALA 1:50



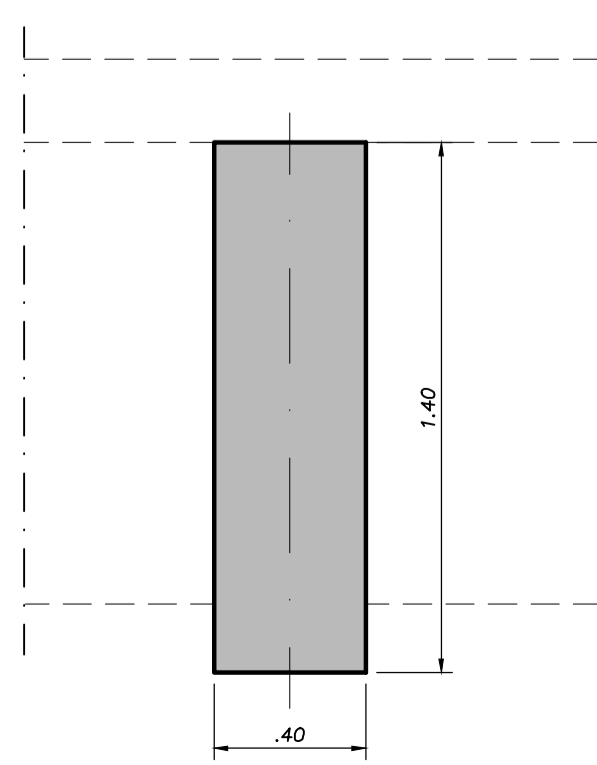
SEZIONE I-I  
SCALA 1:50



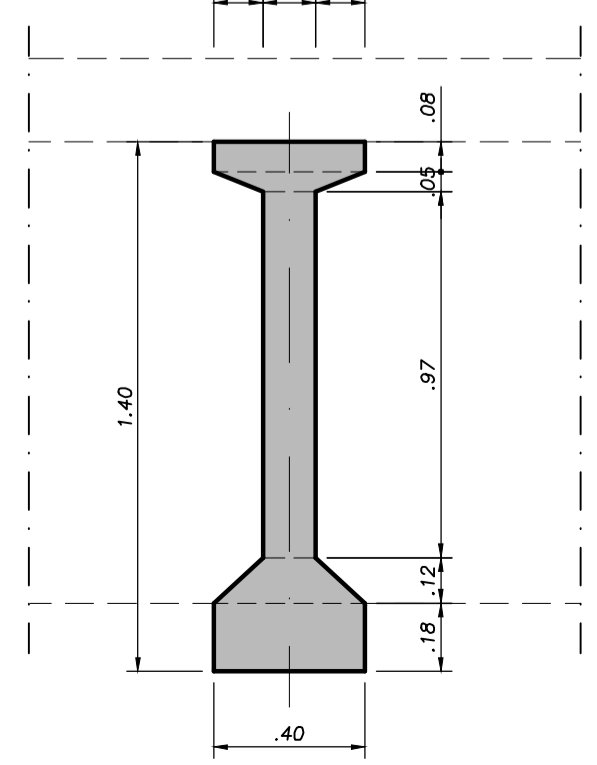
PROSPETTO TRAVE  
SCALA 1:50



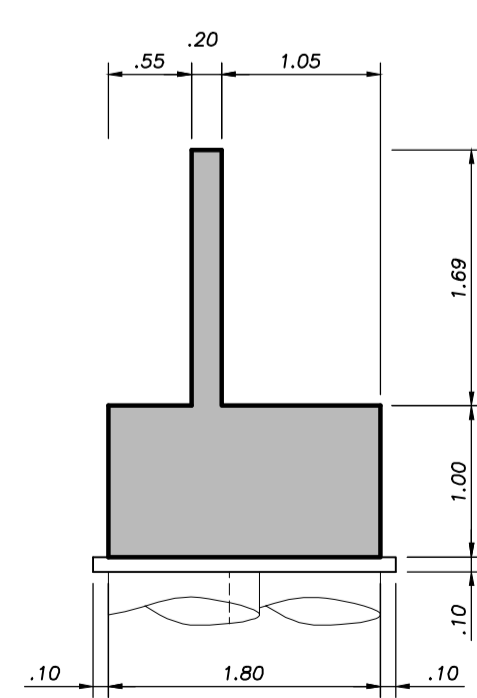
TRAVE SEZIONE G-G  
SCALA 1:20



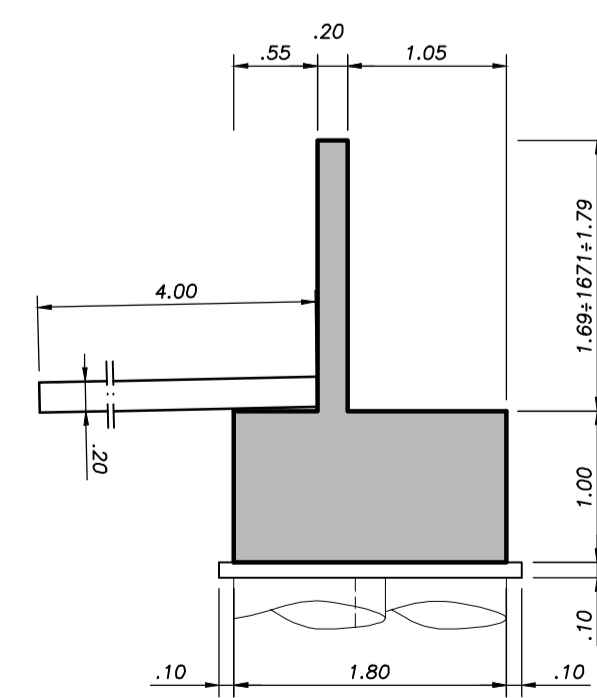
TRAVE SEZIONE H-H  
SCALA 1:20



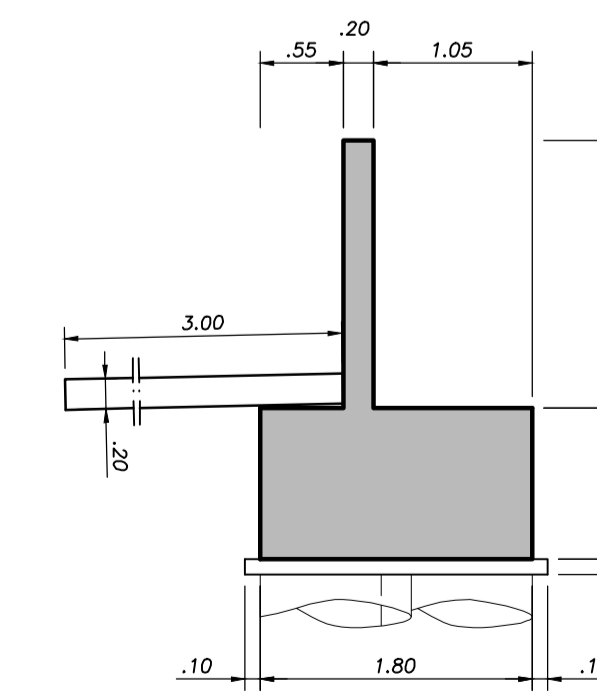
SPALLA SEZ. D-D  
SCALA 1:50



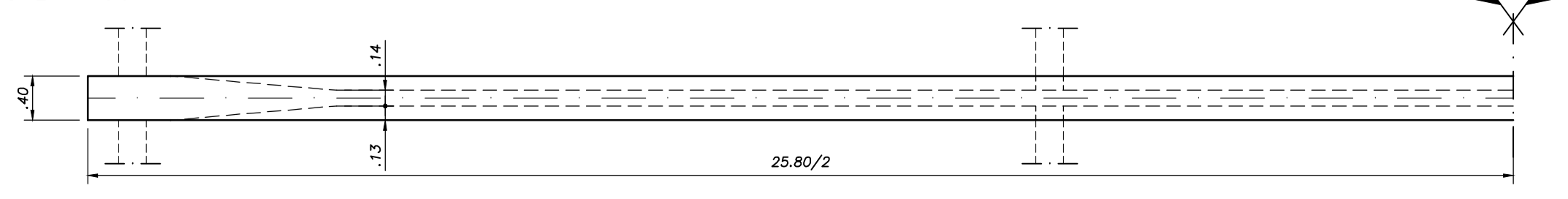
SPALLA SEZ. E-E  
SCALA 1:50



SPALLA SEZ. F-F  
SCALA 1:50



PIANTA TRAVE  
SCALA 1:50



SOCIETA' PER AZIONI AUTOSTRADA DEL BRENNERO - TRENTO

ORDINE DEGLI INGEGNERI DELLA PROV. DI TRENTO  
dott. ing. ROBERTO BOSETTI  
INSCRIZIONE ALBO N° 1027

IL RESPONSABILE DEL PROCEDIMENTO  
dott. ing. Roberto Bosetti

# autostrada del brennero

ALLARGAMENTO DELLA CARREGGIATA SUD AUTOSTRADALE IN CORRISPONDENZA DELLA SALITA DI AFFI TRA LA PROG. KM 201+285 E LA PROG. KM 203+930 E RIFACIMENTO DEI SOVRAPPASSI AUTOSTRADALI N°68 "RIVOLI-ZUANE" E N°69 "S.C. RIVOLI-CAPRINO"

9.11 CARATTERISTICHE DELLE STRUTTURE ESISTENTI  
PONTE SUL CANALE S.I.M.A.  
DISEGNI GENERALI

0	MAG-2022	EMISSIONE	F. RECH	F. OSS PAPOT	C. COSTA
REVISIONE:	DATA:	DESCRIZIONE:	REDAZIONE:	VERIFICA:	APPROVAZIONE:
DATA:	MAGGIO 2008				
NUMERO PROGETTO:	29/08				
			<b>DIREZIONE TECNICA GENERALE</b>		ORDINE DEGLI INGEGNERI DELLA PROV. DI BOLZANO dott. ing. CARLO COSTA N. 891 INGEGNERKAMMER DER PROVINZ BOZEN