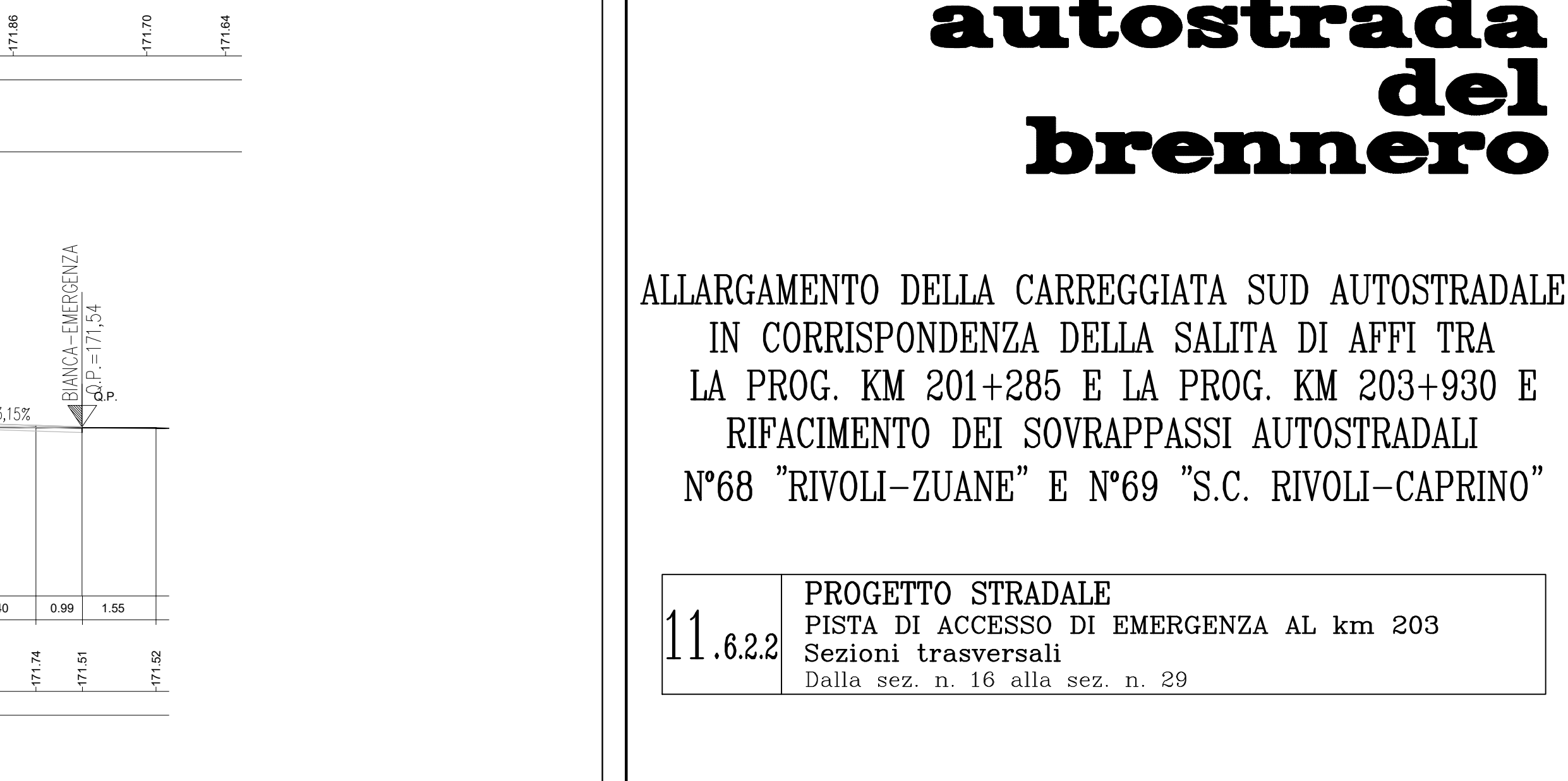
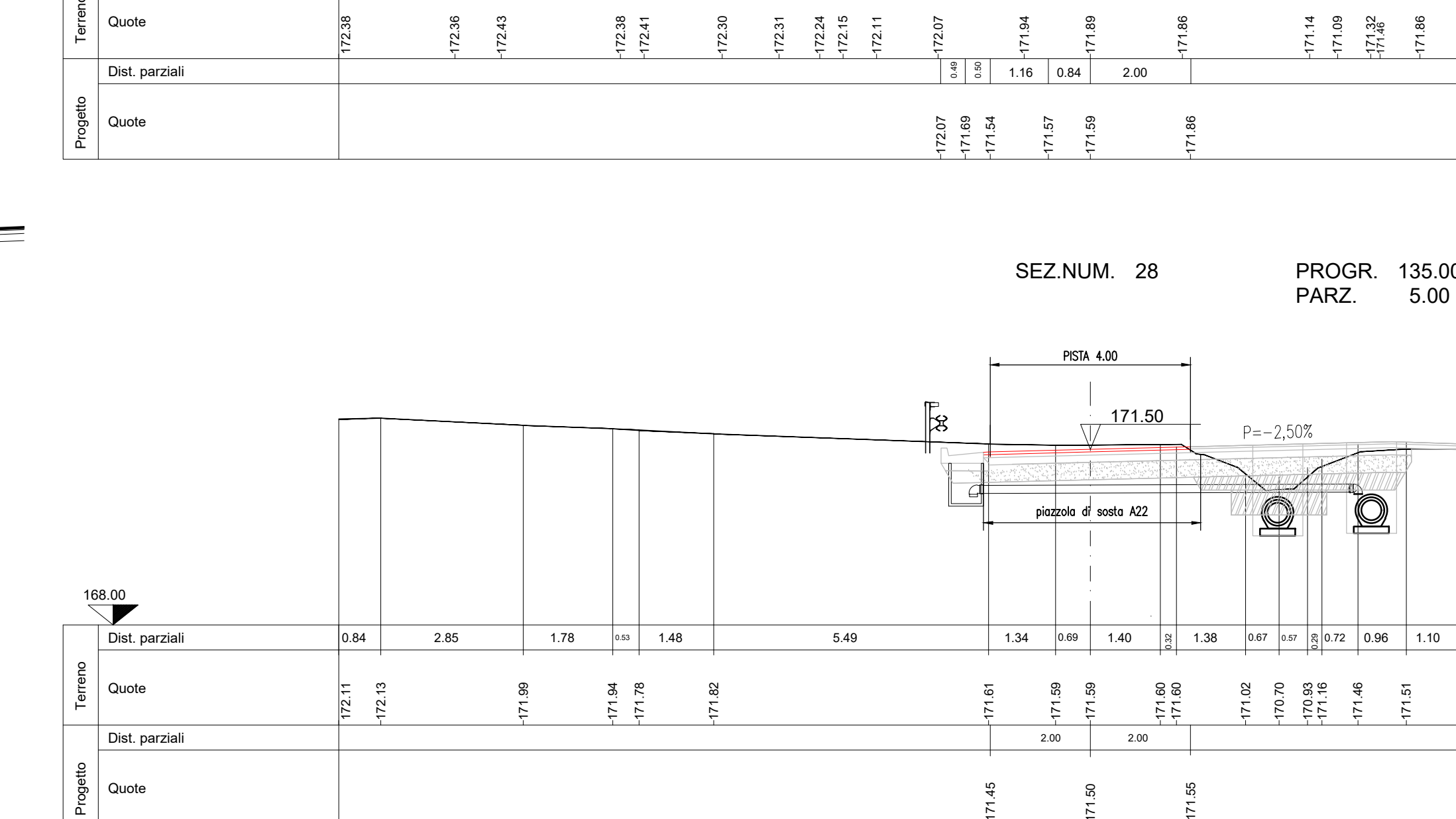
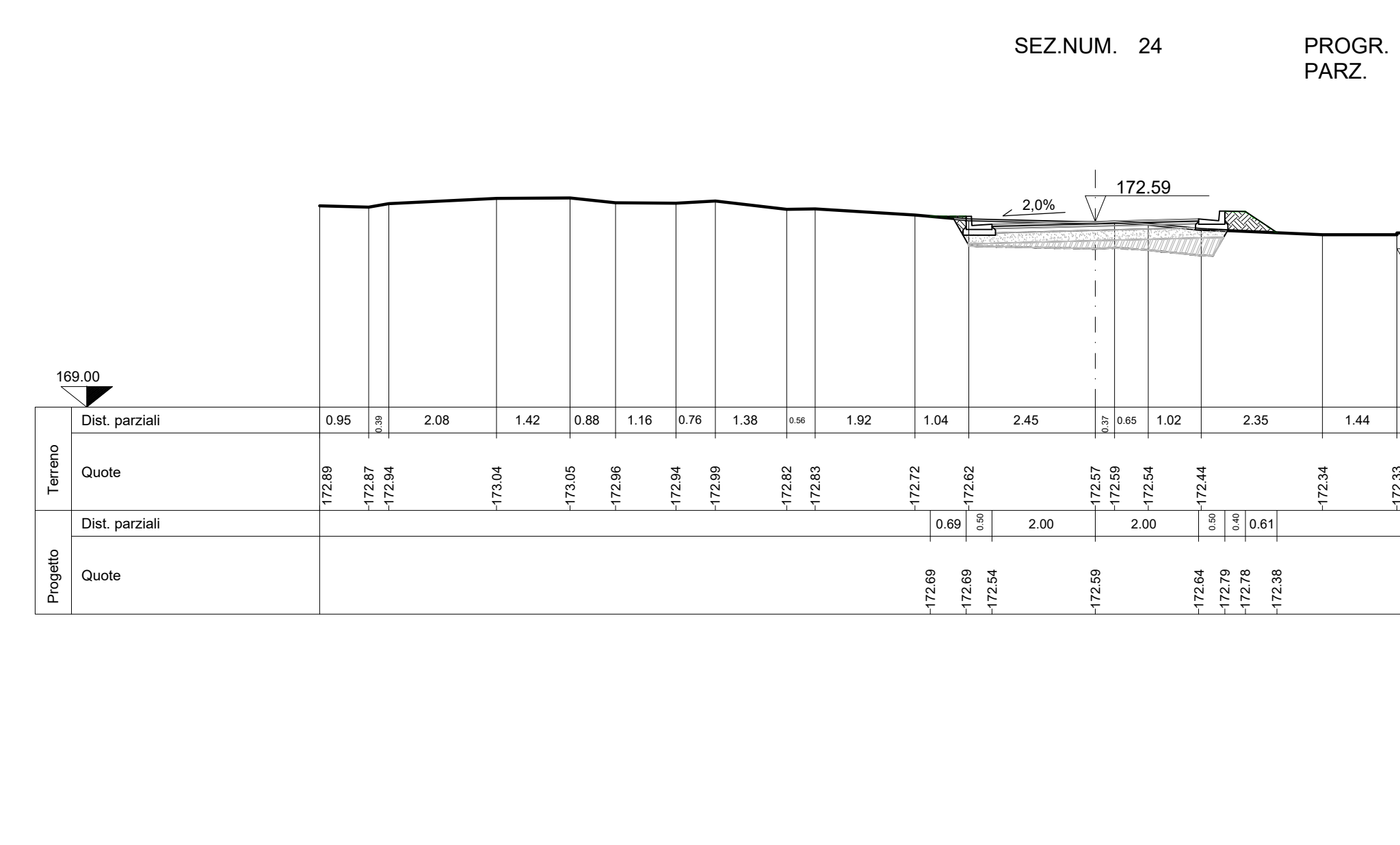
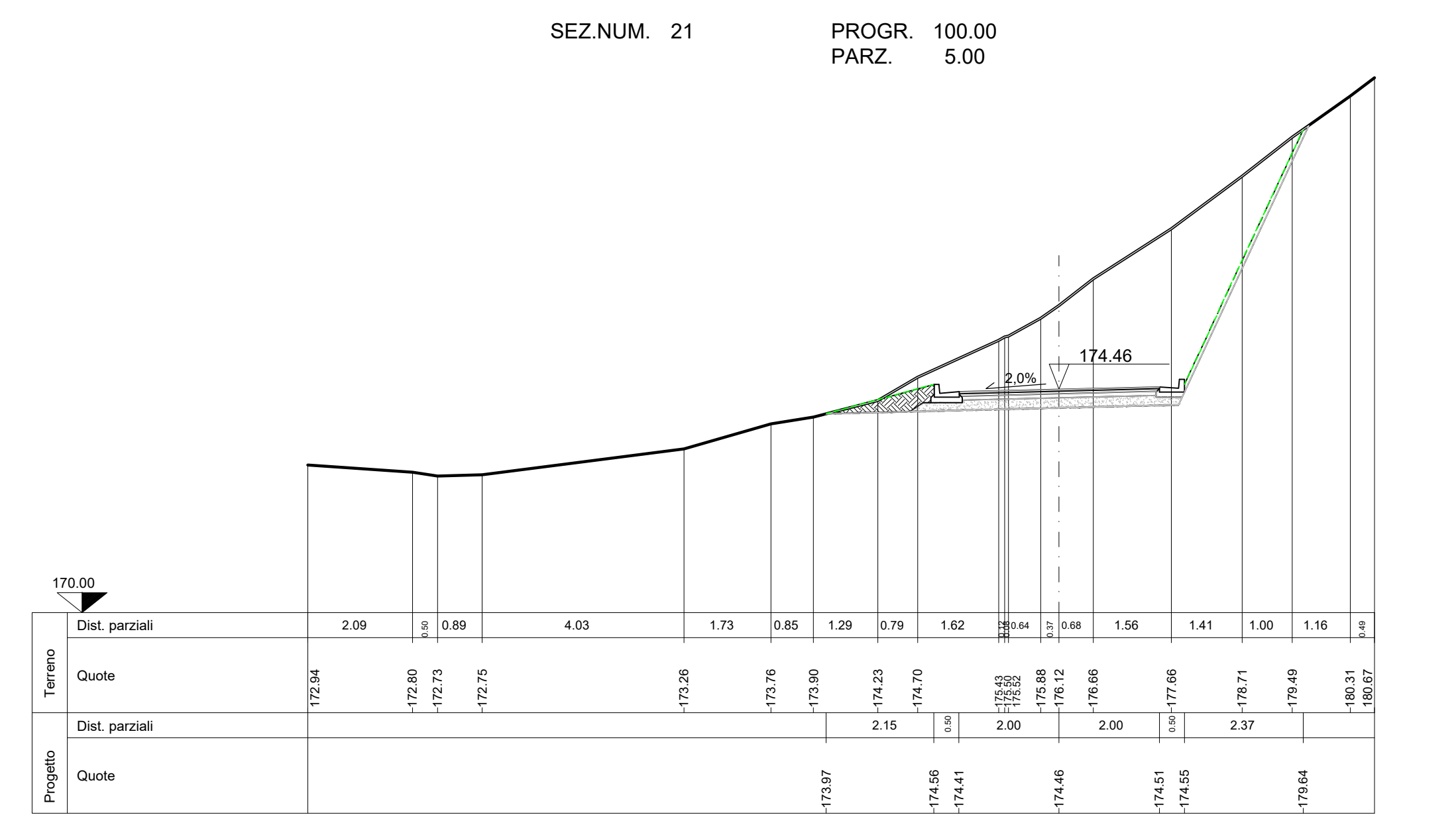
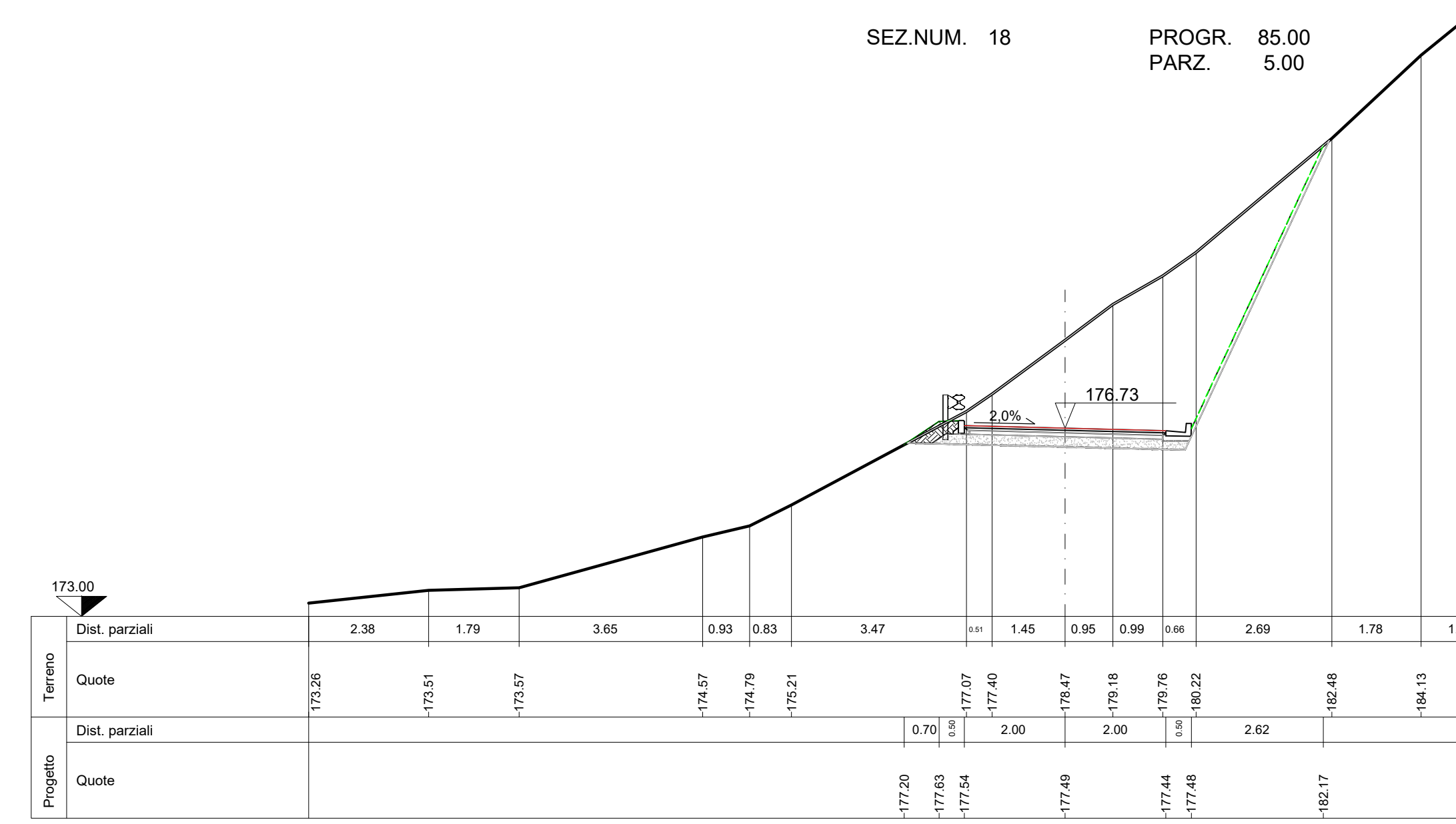
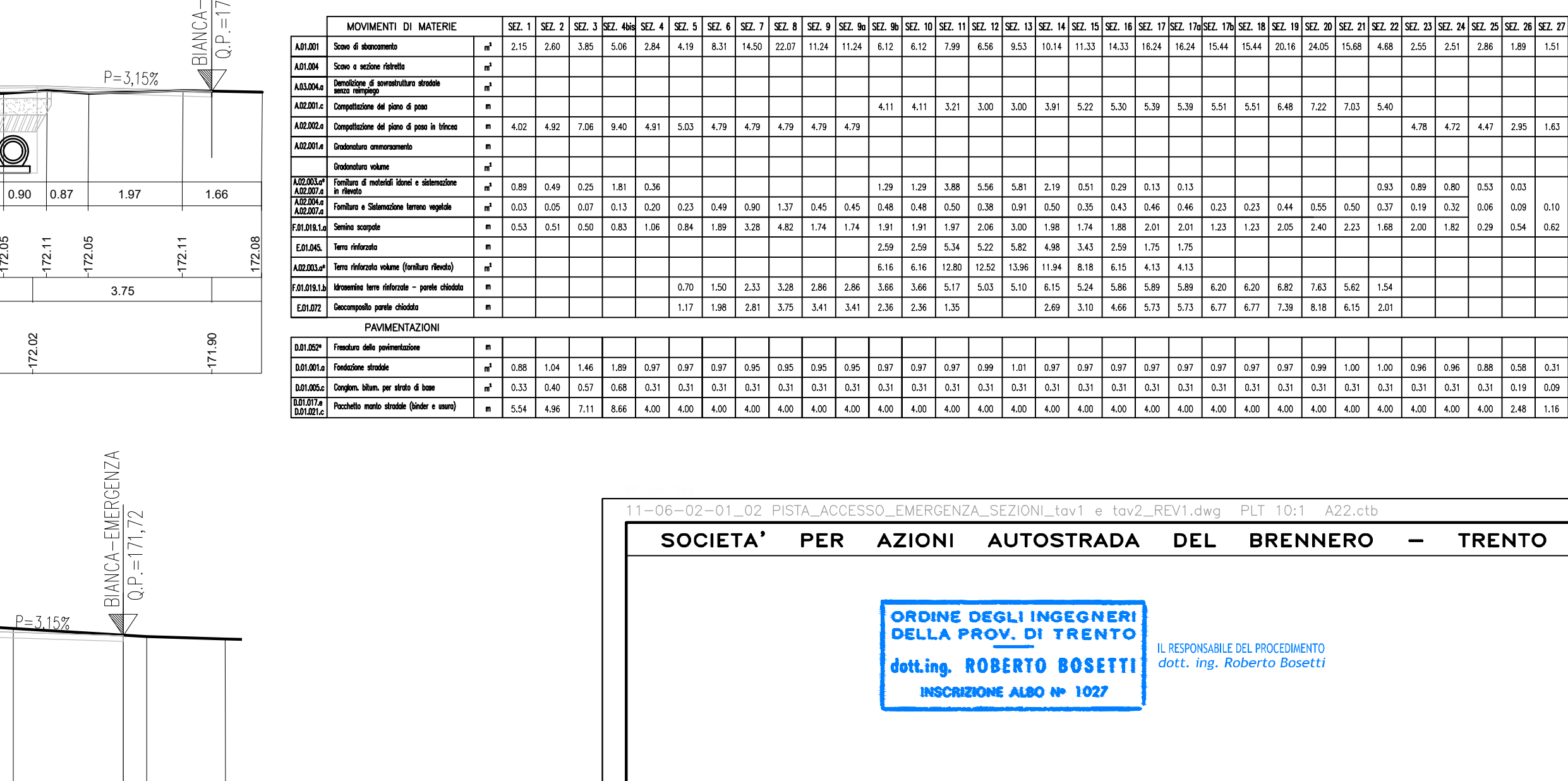
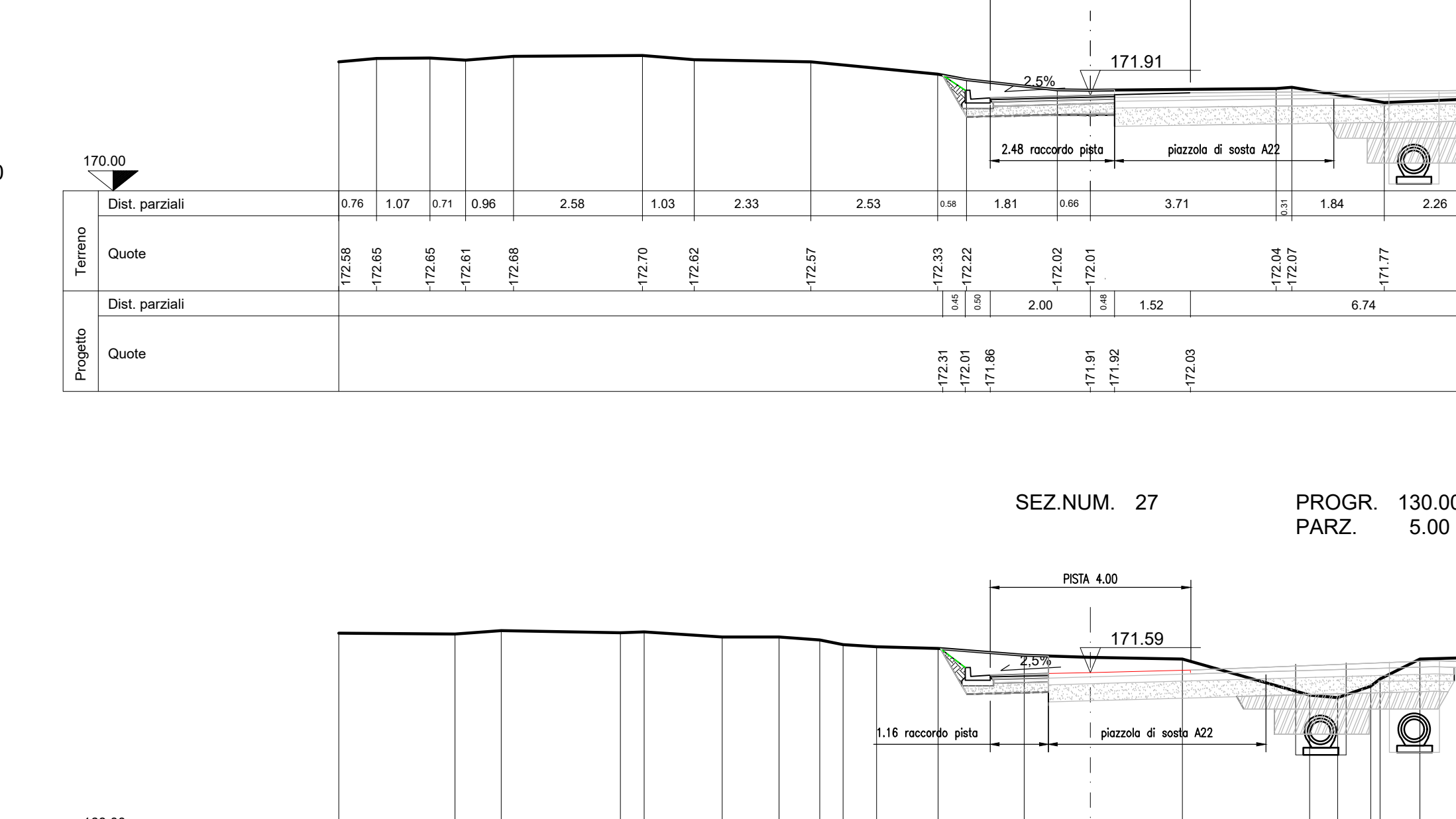
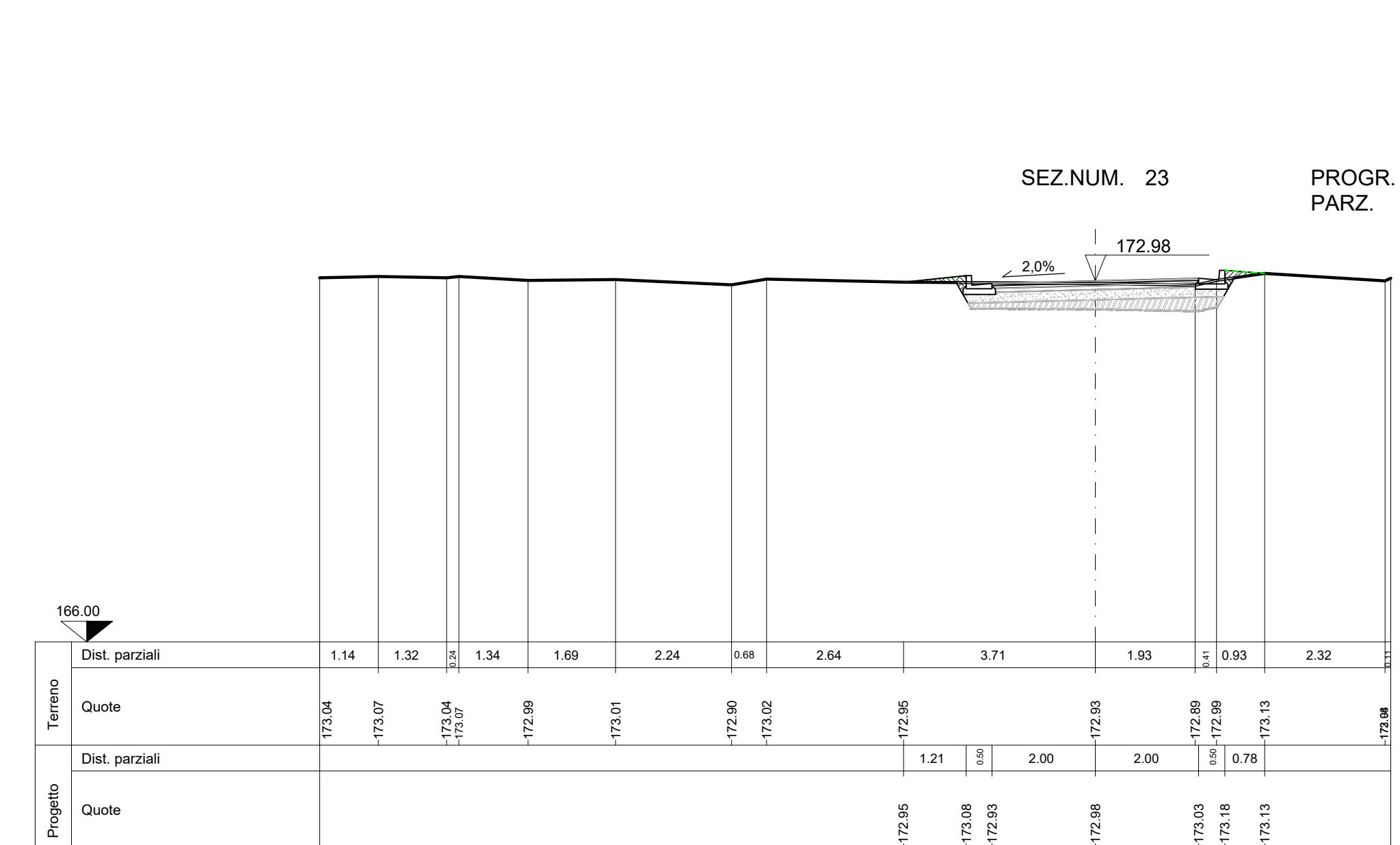
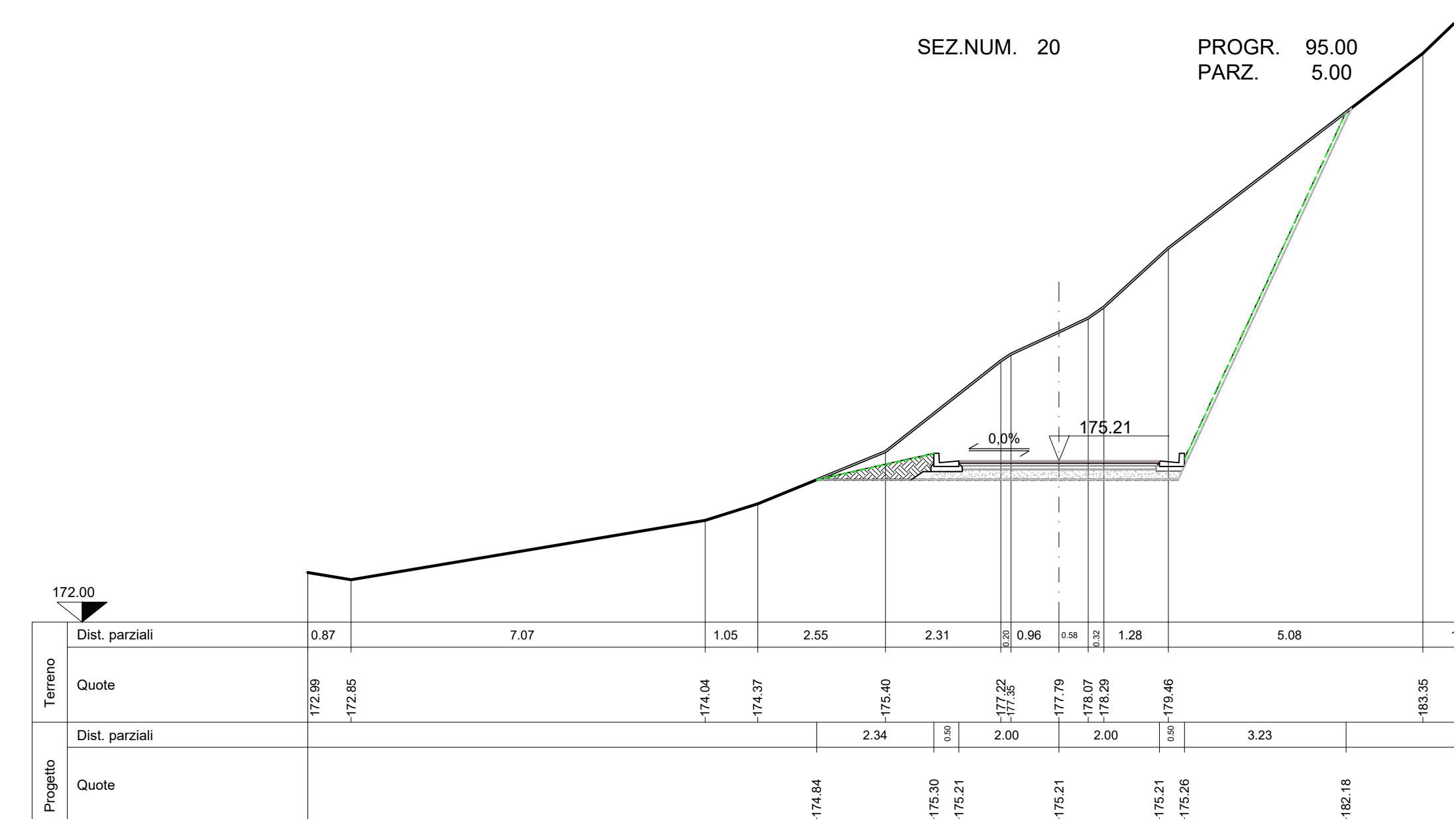
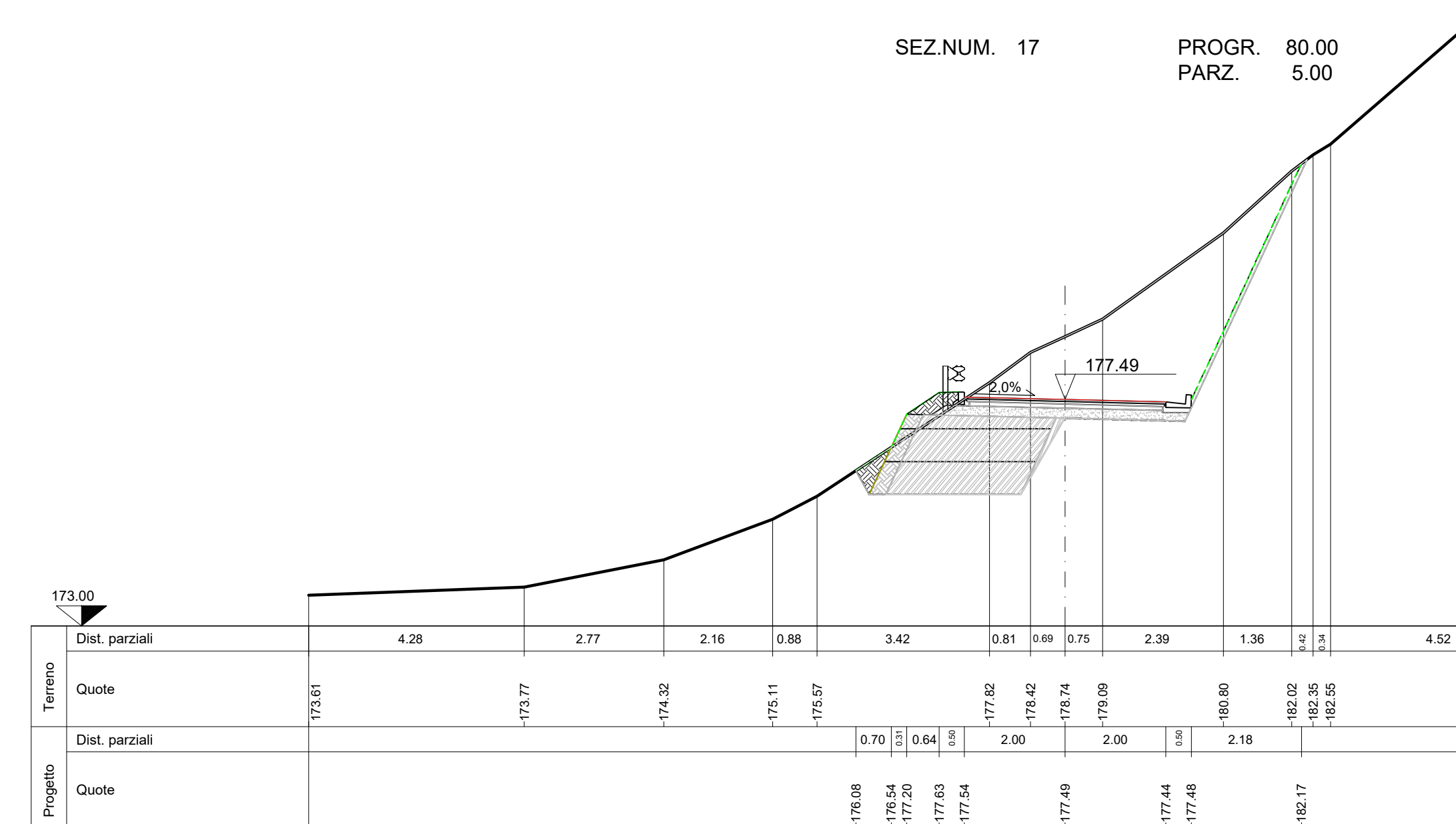
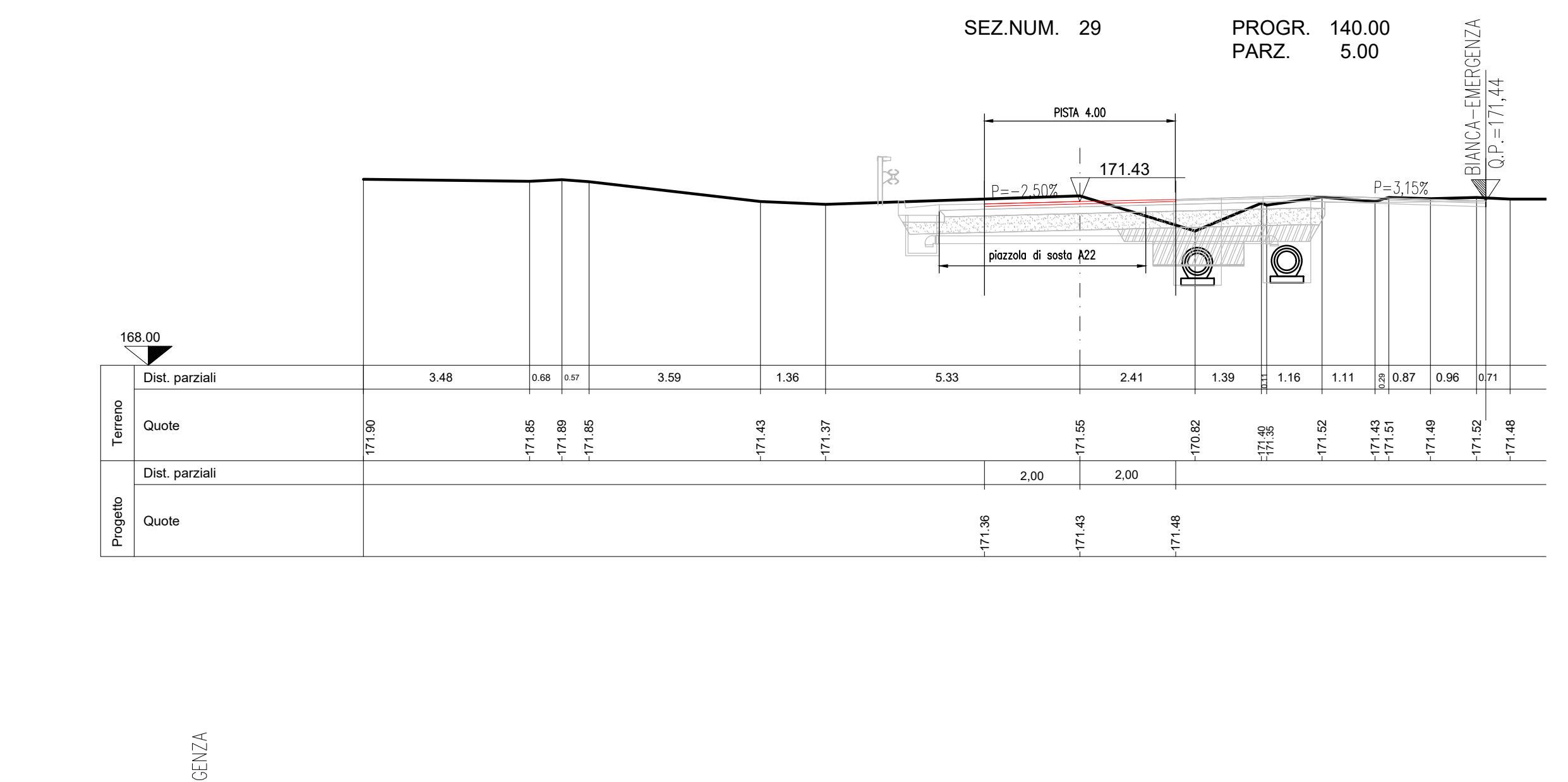
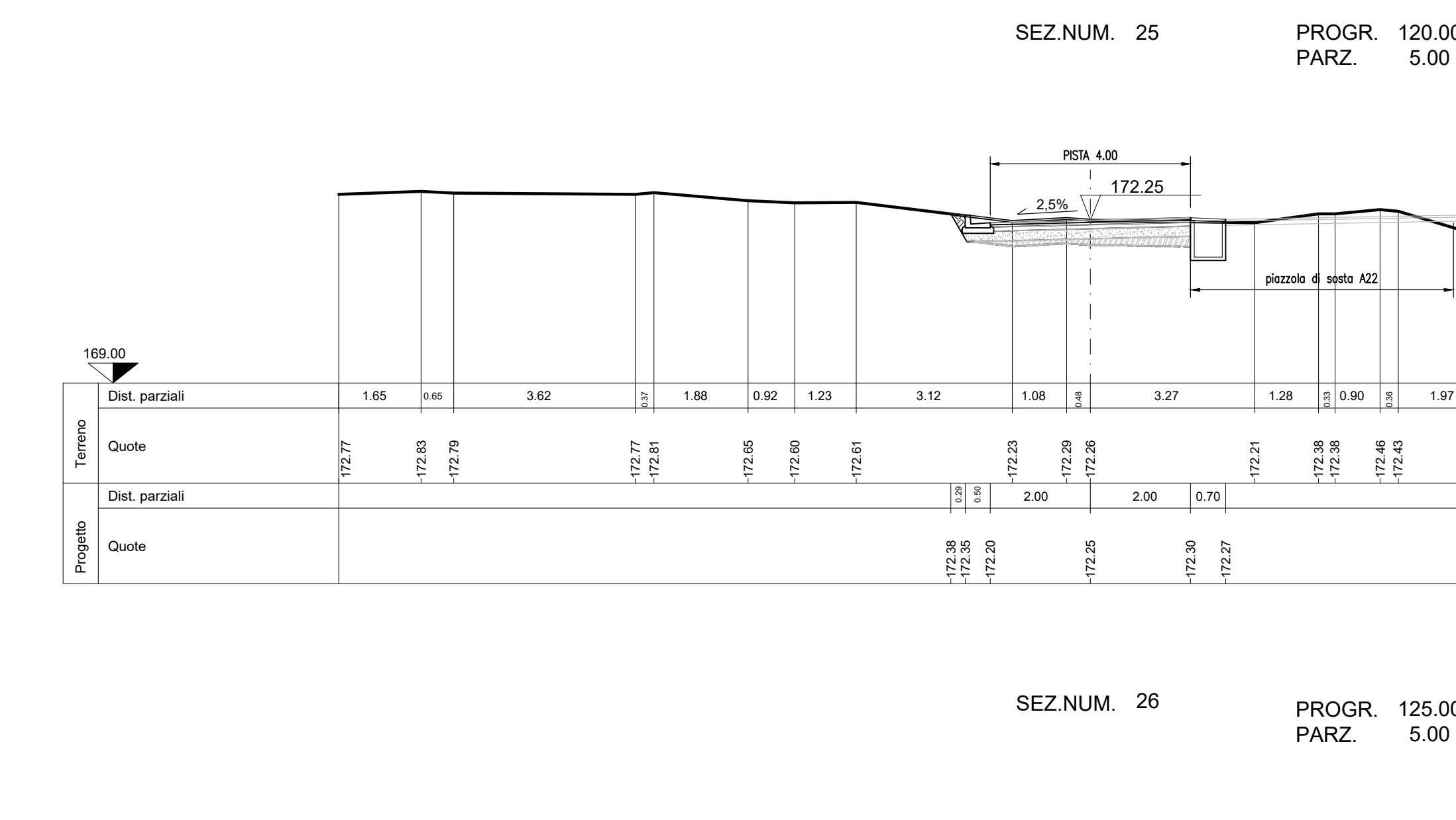
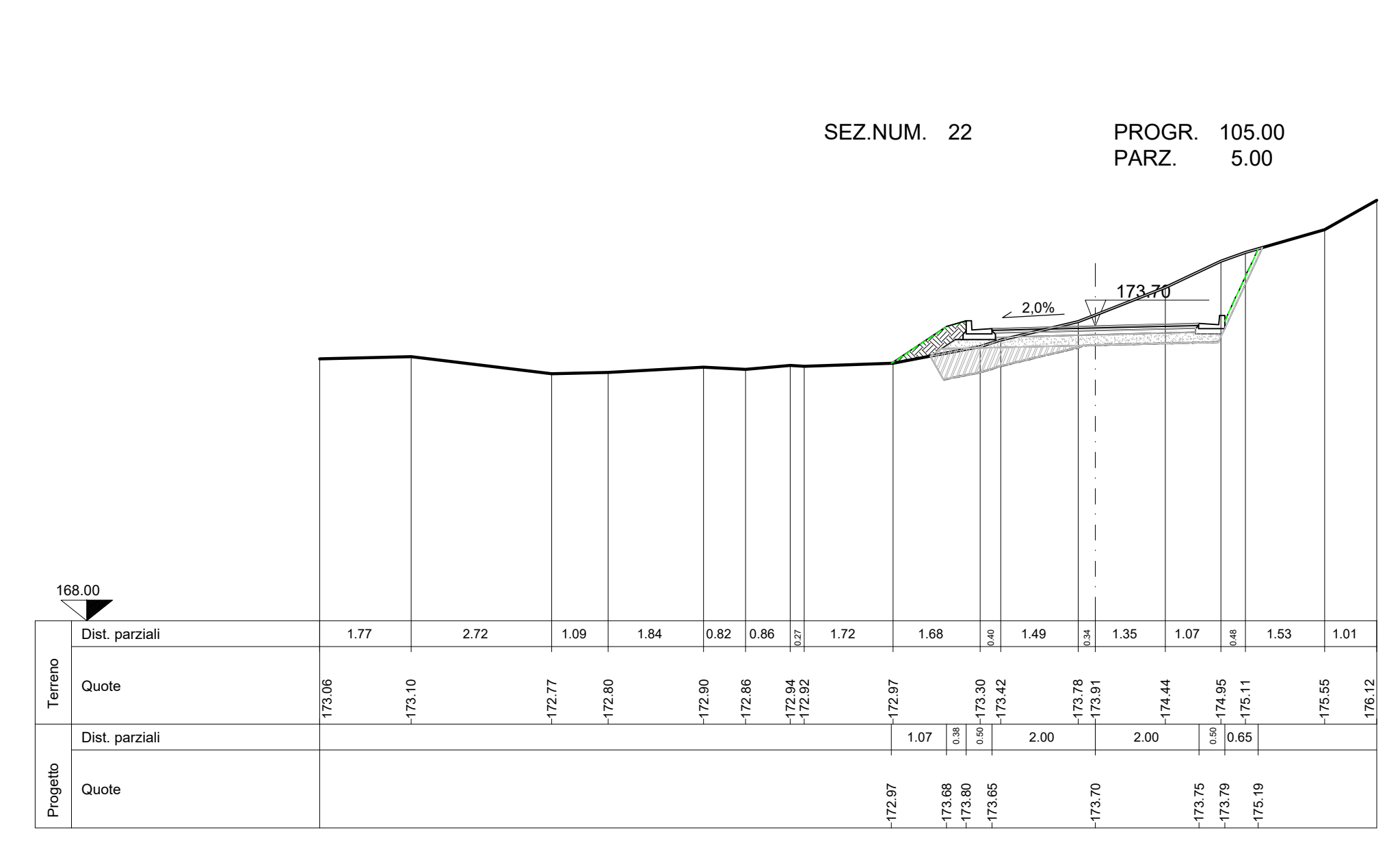
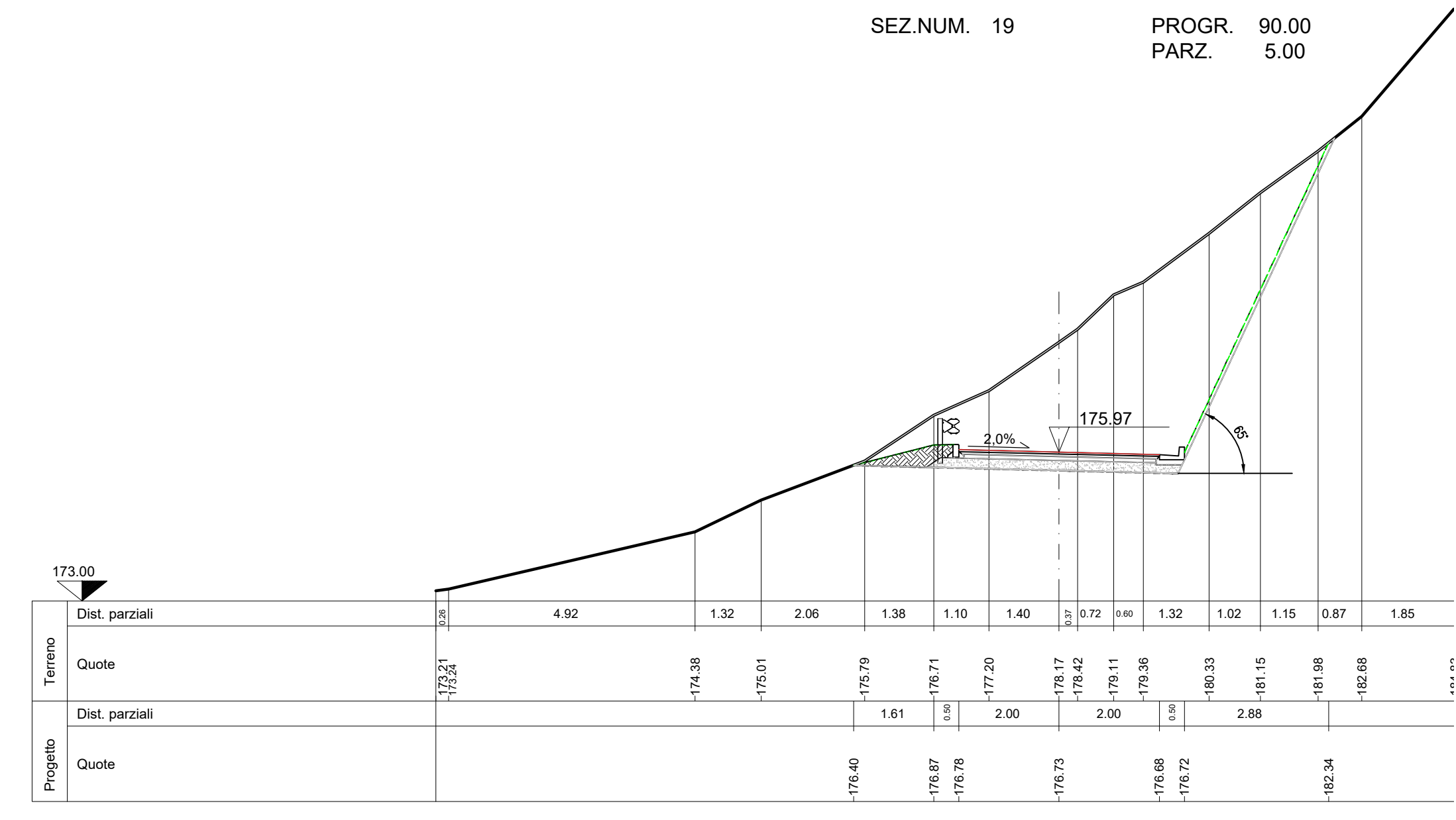
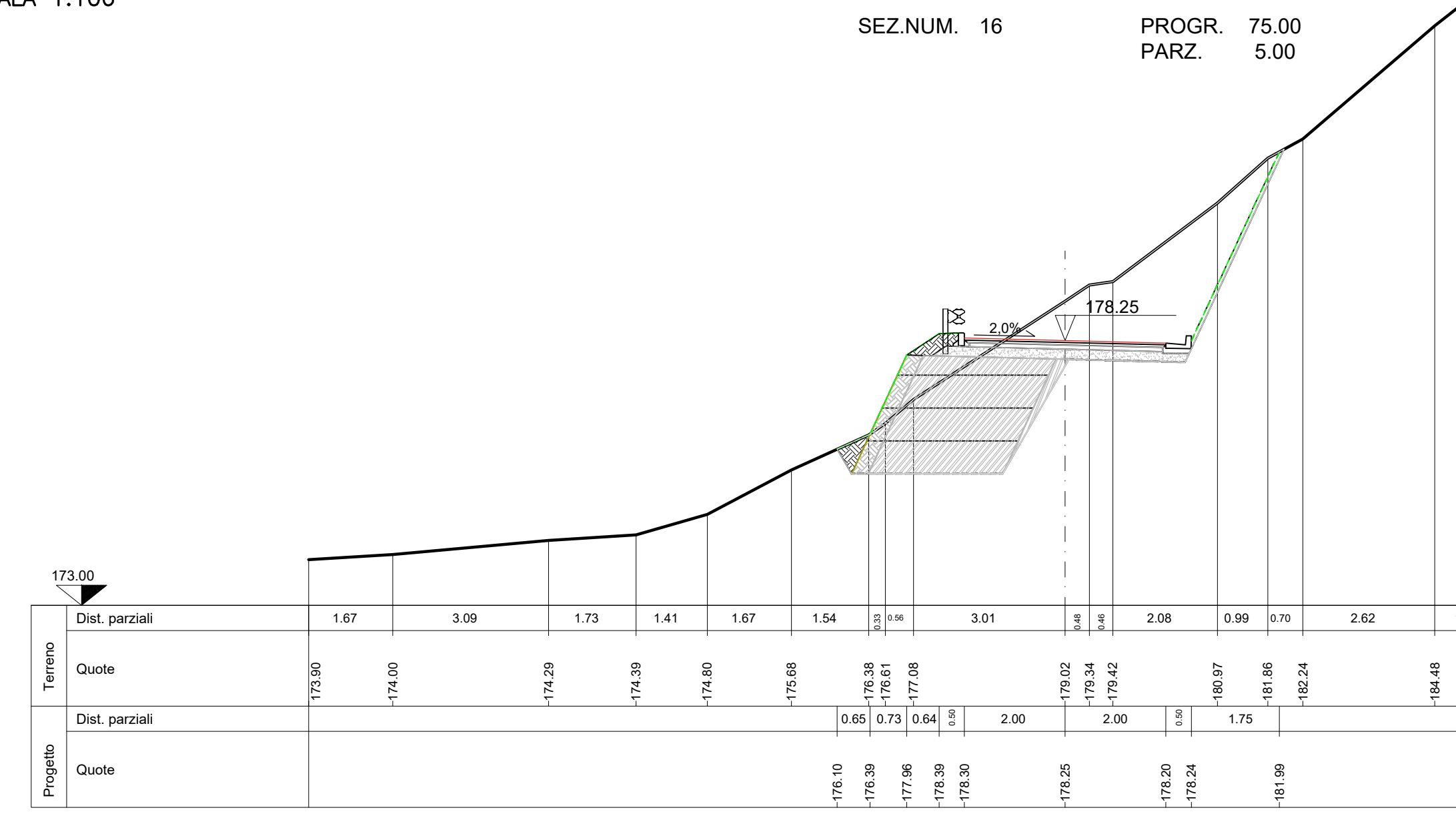


SEZIONI TRASVERSALI
SCALA 1:100



SOCIETA' PER AZIONI AUTOSTRADA DEL BRENNERO - TRENTO
ORDINE DEGLI INGEGNERI DELLA PROV. DI TRENTO
Ing. ROBERTO BOSETTI
INGENIEURKAMMER DER PROVINZ BOZEN
autostrada del brennero
ALLARGAMENTO DELLA CARREGGIATA SUD AUTOSTRADALE IN CORRISPONDENZA DELLA SALITA DI AFFI TRA LA PROG. KM 201+285 E LA PROG. KM 203+930 E RIFACIMENTO DEI SOVRAPPASSI AUTOSTRADALI N°68 "RIVOLI-ZUANE" E N°69 "S.C. RIVOLI-CAPRINO"
PROGETTO STRADALE PISTA DI ACCESSO DI EMERGENZA AL km 203 Sezioni trasversali
DIREZIONE TECNICA GENERALE