



REGIONE PUGLIA



CITTA' DI BRINDISI

COSTRUZIONE ED ESERCIZIO DI UN IMPIANTO "AGROVOLTAICO" PER PRODUZIONE DI ENERGIA ELETTRICA DA FONTE FOTOVOLTAICA AVENTE POTENZA IN IMMISSIONE PARI A 27,308 MW CON RELATIVO COLLEGAMENTO ALLA RETE ELETTRICA - IMPIANTO DENOMINATO "BRINDISI LOIZZO" UBICATO IN AGRO DEL COMUNE DI BRINDISI.

progettato e sviluppato da



Via Gen. Giacinto
Antonelli n.3
70043
Monopoli (BA)

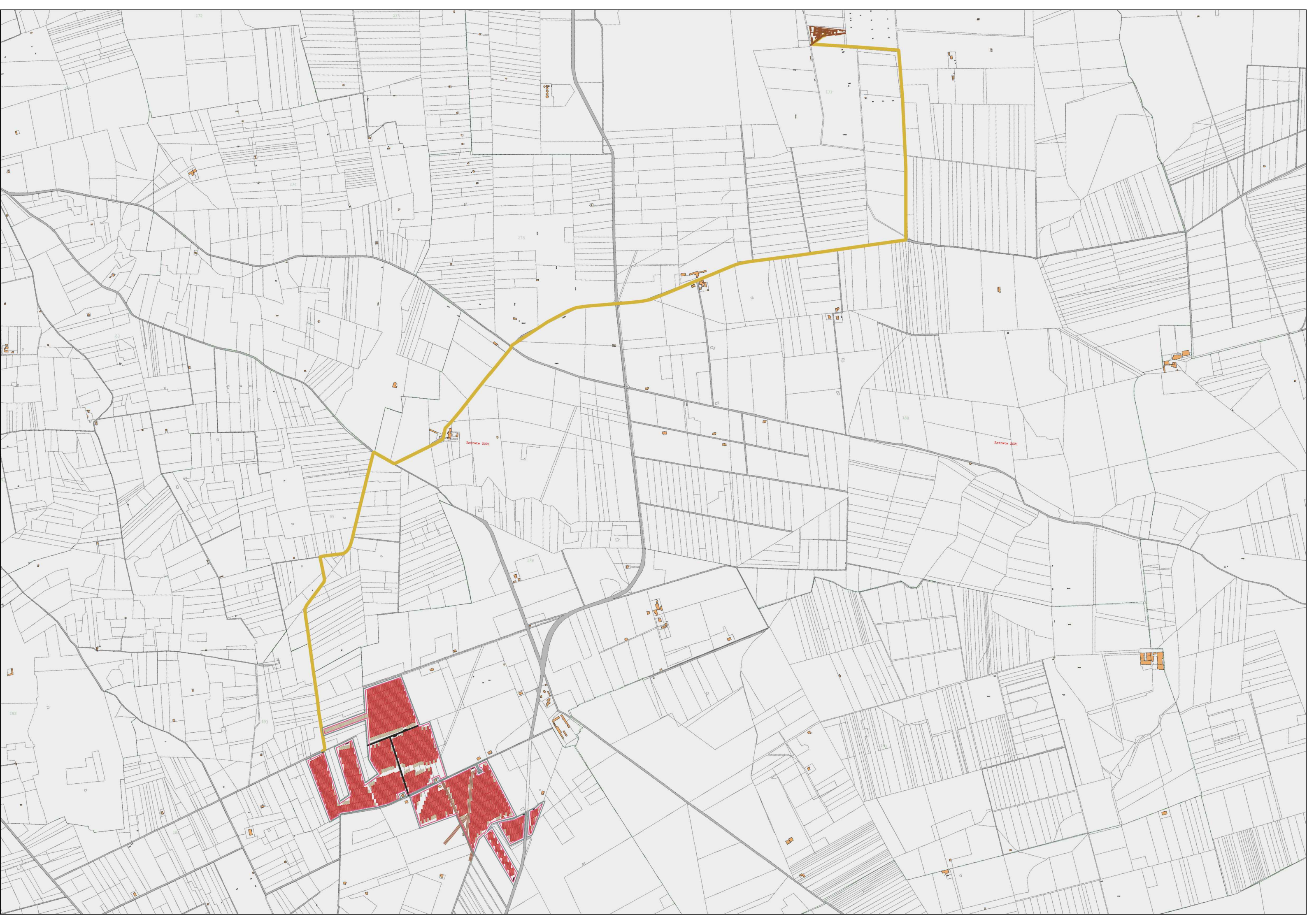


Ing. Emanuele Verdoscia
Via Villafranca n.42
73041
Carmiano (LE)

DATI CATASTALI: Brindisi Fg. 179 P.Illa 45,123,124,226,227,228,229,266,
86,130,131,215,230,231,232,233,234
Fg 186 P.Illa 210,217,218,224,237,472,508,690,545
Mesagne Fg. 103 P.Illa 60,61,58,57,56,46,83

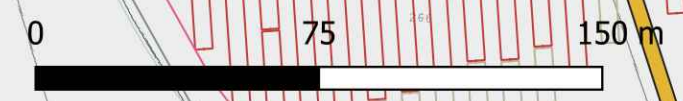


<i>Elaborato</i>	<i>Tecnico</i>
Tracciato connessione su catastale	Ing. Emanuele Verdoscia





Entrata-2021



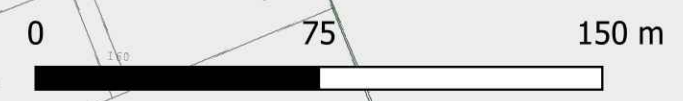


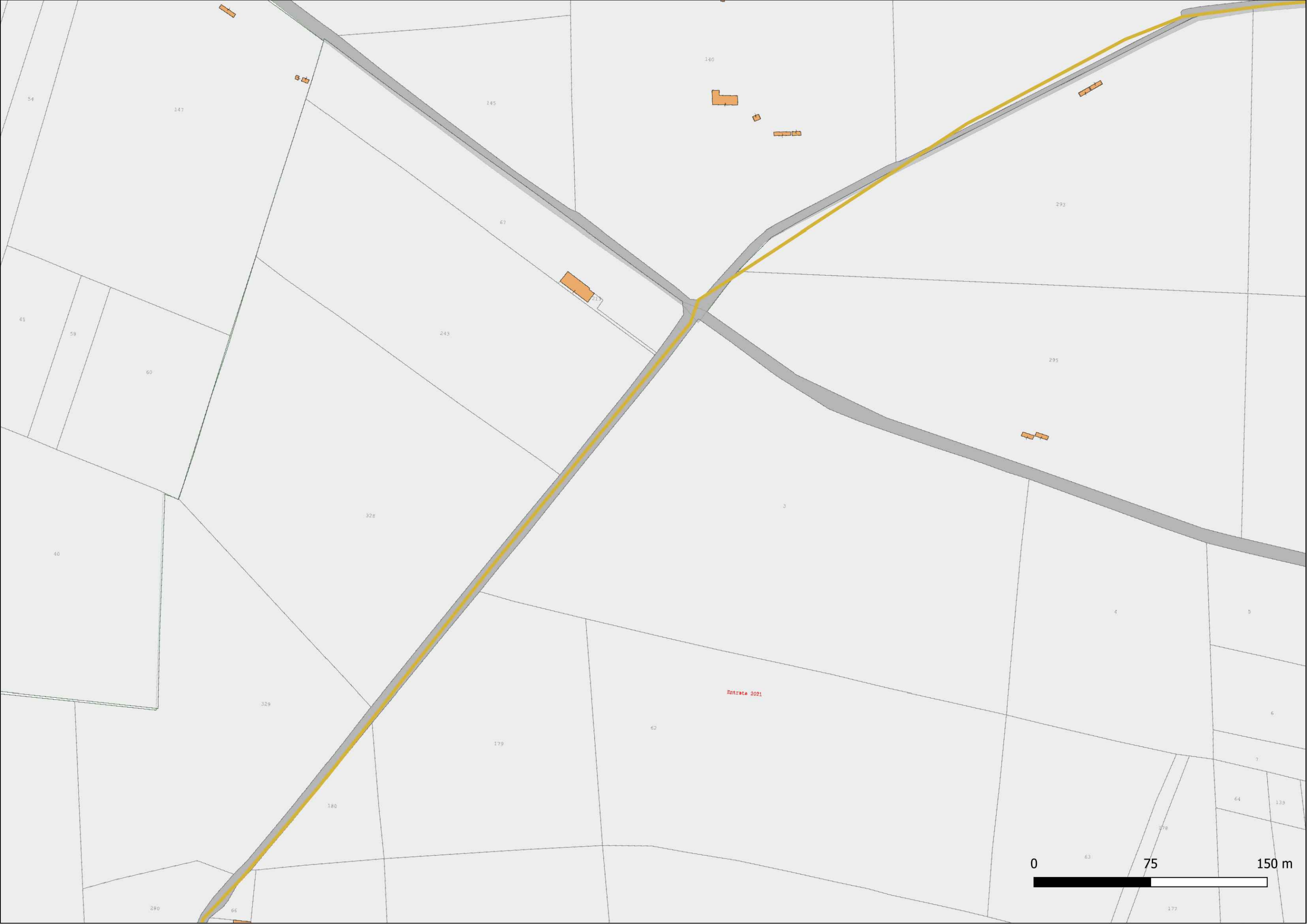
Entrate 2021





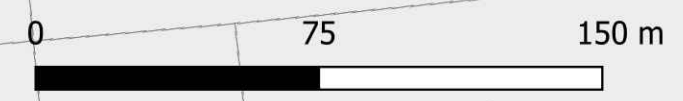
Entrata 2021
55





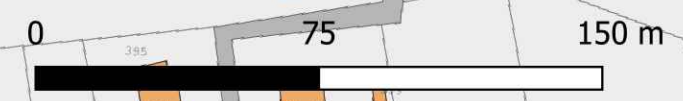


Entrate 2021





Entrada 2021





204

207

208

210

212

214

216

218

221

222

225

227

228

150

151

152

12

153

154

155

156

157

158

159

160

161

162

163

290

445

376

377

67

2

68

69

70

71

72

73

75

77

81

222

Entrée 2021

