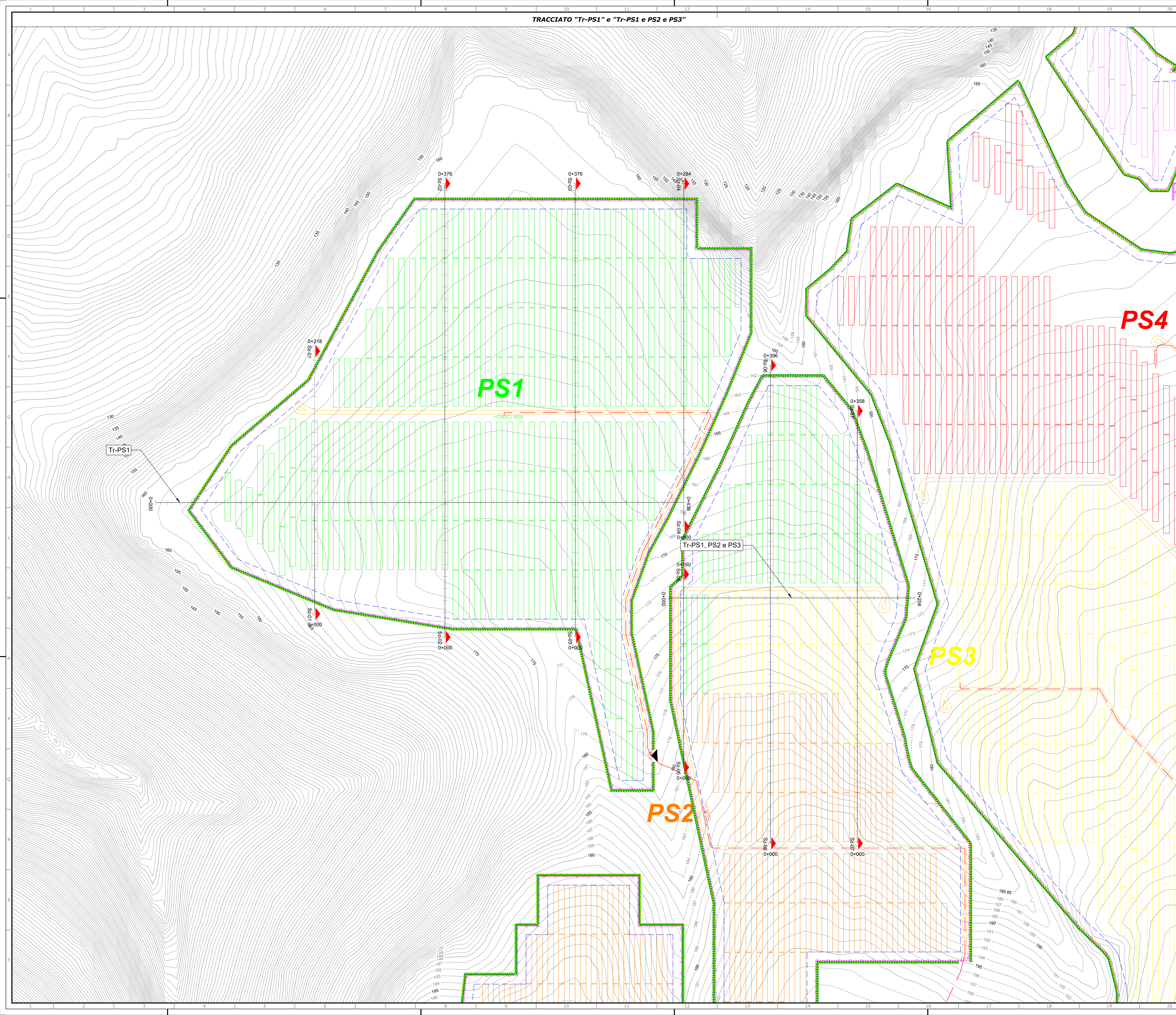
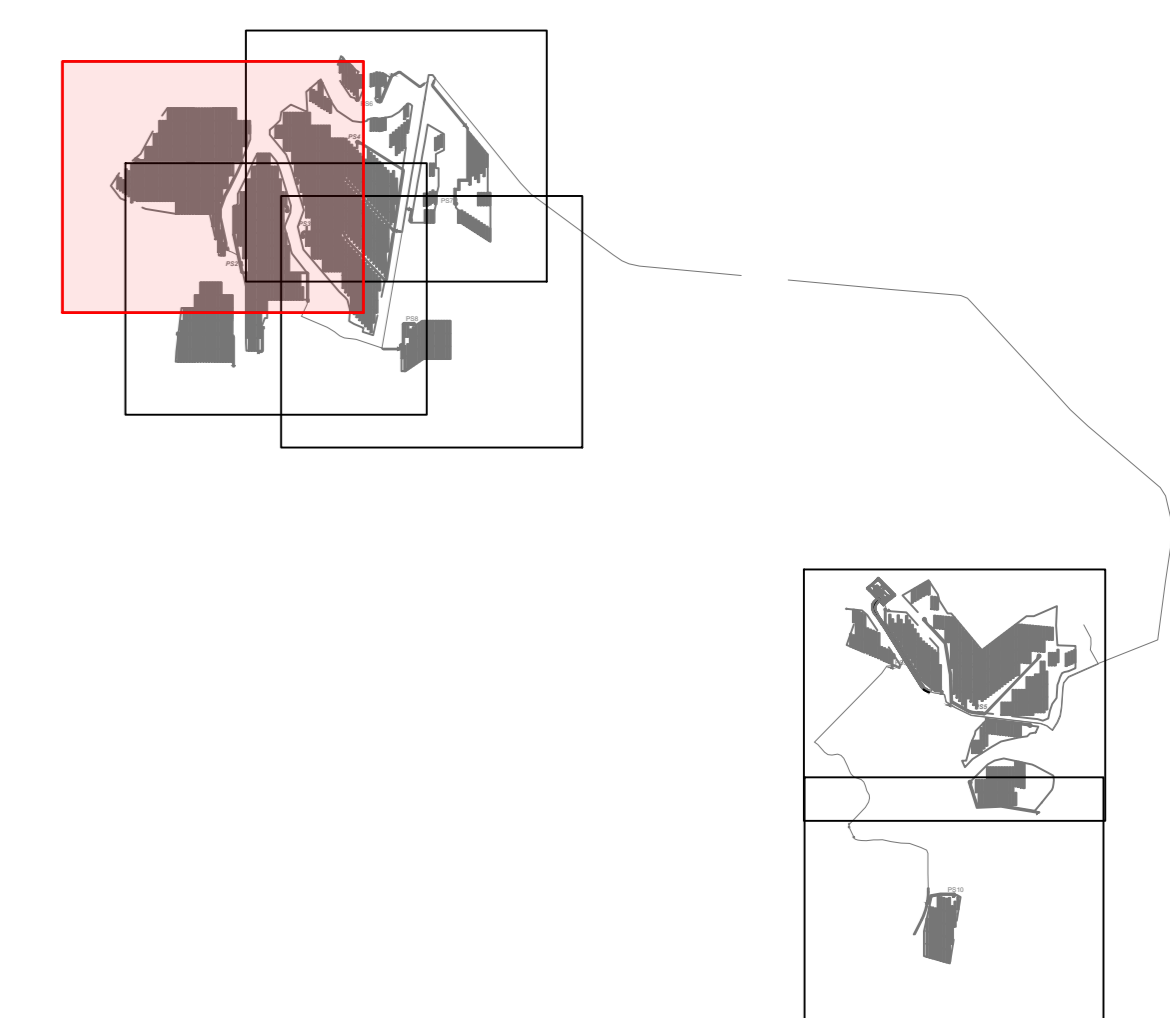


- RECINZIONE PERIMETRALE (82,84 ha)
- BUFFER 7 M DA RECINZIONE
- TRACKER
- VIABILITÀ INTERNA DI IMPIANTO
- POWER STATION
- CAVIDOTTO MT 30 kV
- CAVIDOTTO AT 150 kV
- ATTRAVERSAMENTO IN T.O.C.
- FASCIA DI MITIGAZIONE
- ▶ ACCESSO
- LINEA DI SEZIONE



KEY PLAN



REVISIONE	DATA	DESCRIZIONE	CA.	N.B.	L.S.
00	04/10/2022	PRIMA EMISSIONE	04/10/2022	09/09/2022	09/09/2022
REVISIONE	DATA	DESCRIZIONE	PREPARED	CHECKED	VALIDATED

Green & Green S.r.l.
 Via Edmondo de Amicis, 64
 87036 Rende (CS) - Italy
 P.IVA 02900010762
 Ph. (+39) 0984 646295
 Fax (+39) 0984 1711470
 info@greengreen.it
 www.greengreen.it



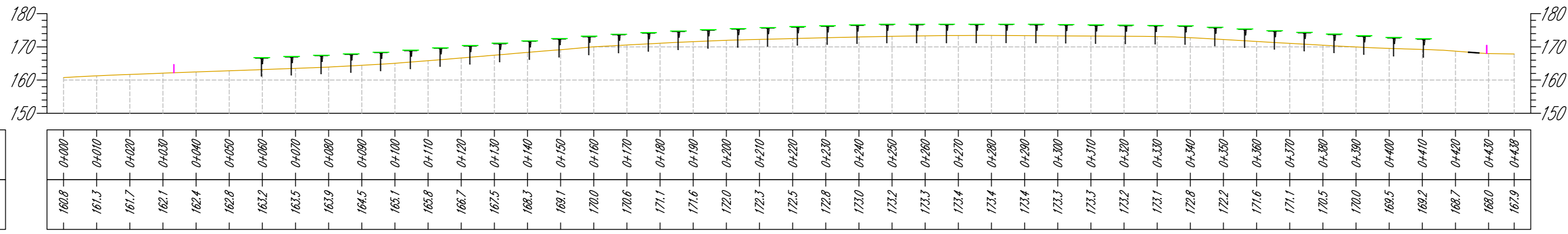
Il Tecnico
 Ing. Leonardo Splendido

PROGETTO	PRODOTTO	DEFINITIVO	SCALA
C21PWT008AFD01500_Parte 1 di 5			1:1.000
IMPIANTO AGRIVOLTAICO "SAN MARTINO" E OPERE DI CONNESSIONE			1:1

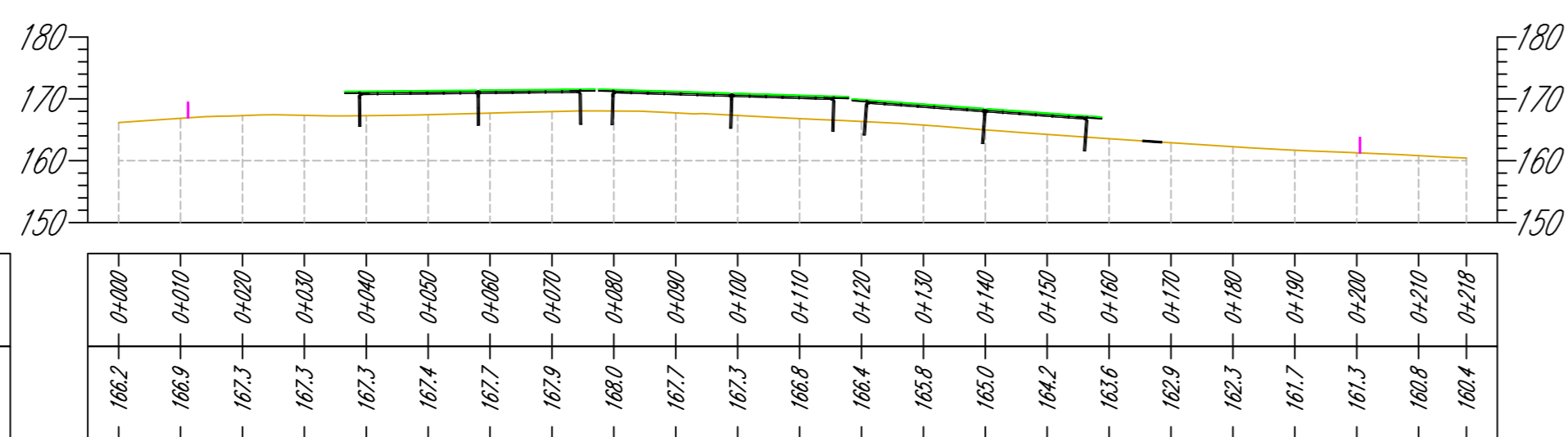
Powertis

PIANO QUOTATO, PROFILI E SEZIONI DI
 PROGETTO_Parte 1 di 5

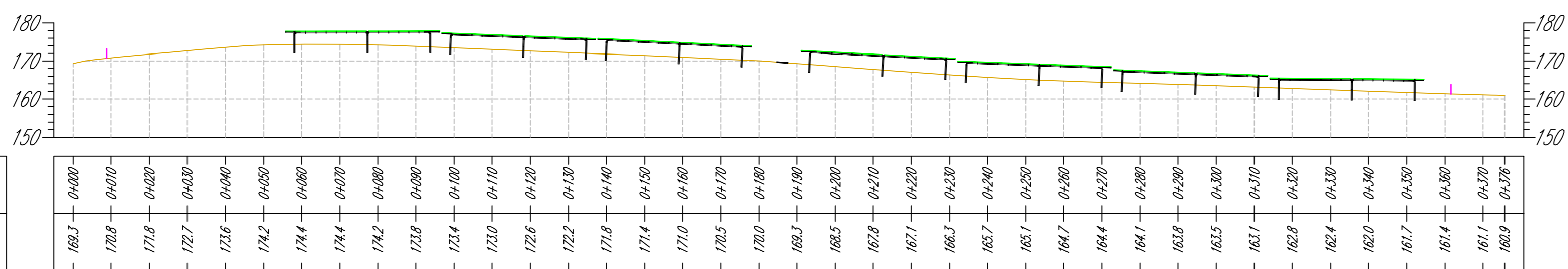
Profilo: Tr-PS1
Scala : 1000:1000
Q.Ref. : 150 mslm



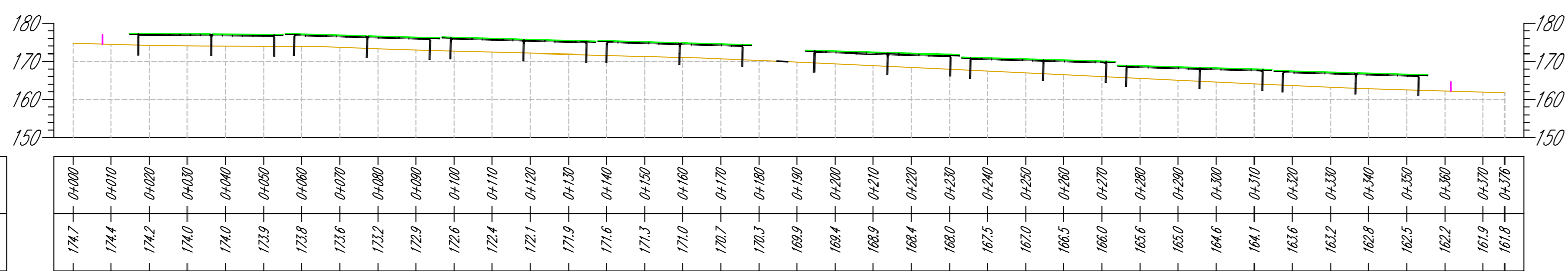
Profilo: Sz-01
Scala : 1000:1000
Q.Ref. : 150 mslm



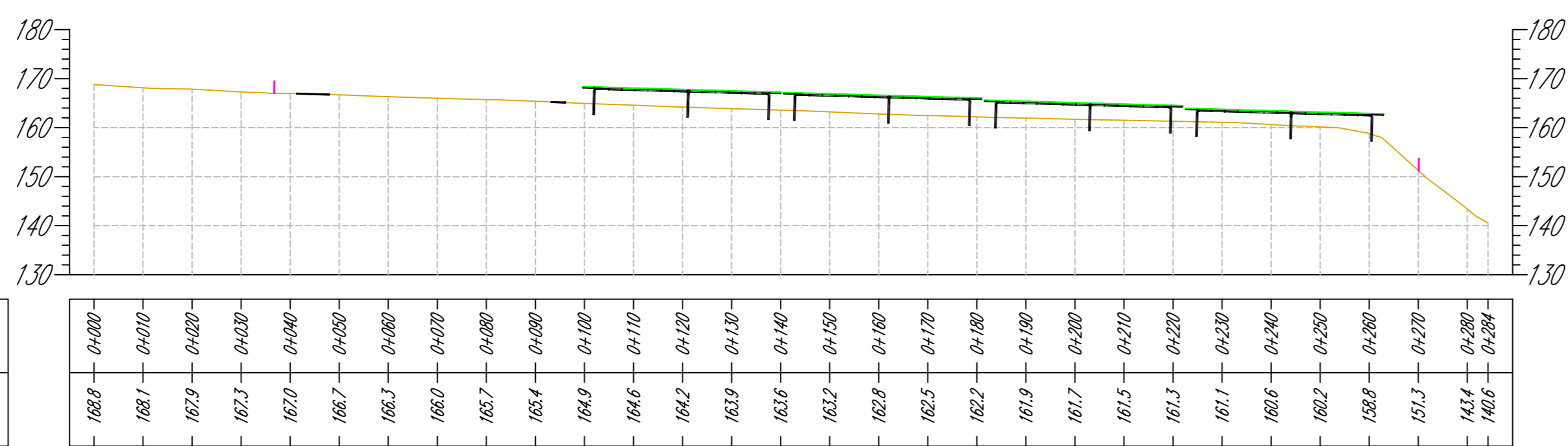
Profilo: Sz-02
Scala : 1000:1000
Q.Ref. : 150 mslm



Profilo: Sz-03
Scala : 1000:1000
Q.Ref. : 150 mslm

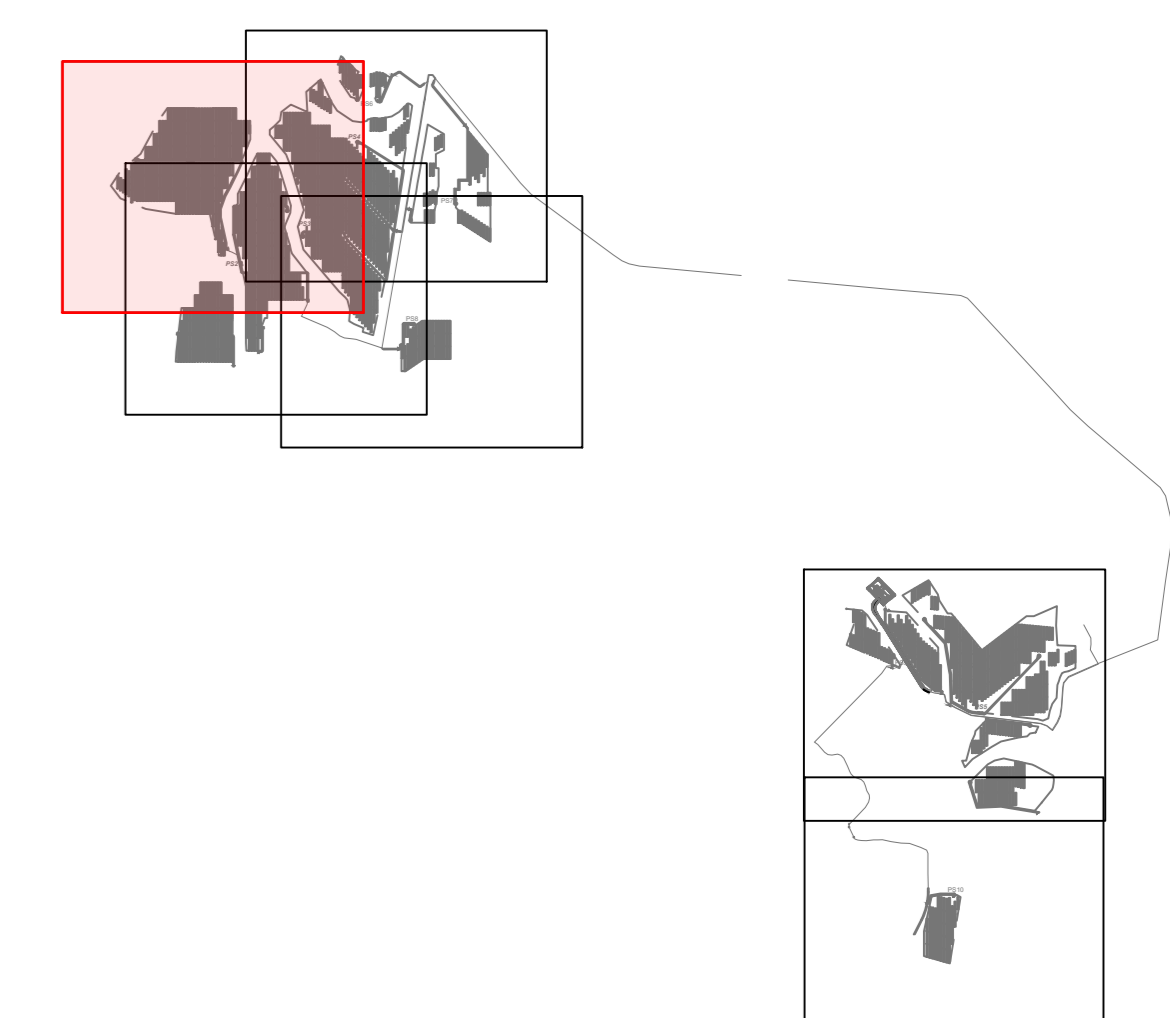


Profilo: Sz-04
Scala : 1000:1000
Q.Ref. : 130 mslm



- Profilo Terreno Esistente
- Tracker in profilo longitudinale O-E
- Tracker in sezione trasversale S-N
- Recinzione
- Viabilità Interna

KEY PLAN



00	04/10/2022	PRIMA EMISSIONE	04/10/2022	09/09/2022 09/09/2022	
REVISIONE	DATA	DESCRIZIONE	C.A.	R.B.	L.S.
REVISION	DATE	DESCRIPTION	PREPARED	CHECKED	VALIDATED






Green & Green S.r.l.
Via Edmondo de Amicis, 64
87036 Rende (CS) - Italy
P.IVA 02900010782
Ph. (+39) 0984 846295
Fax (+39) 0984 1711470
info@greengreen.it
www.greengreen.it

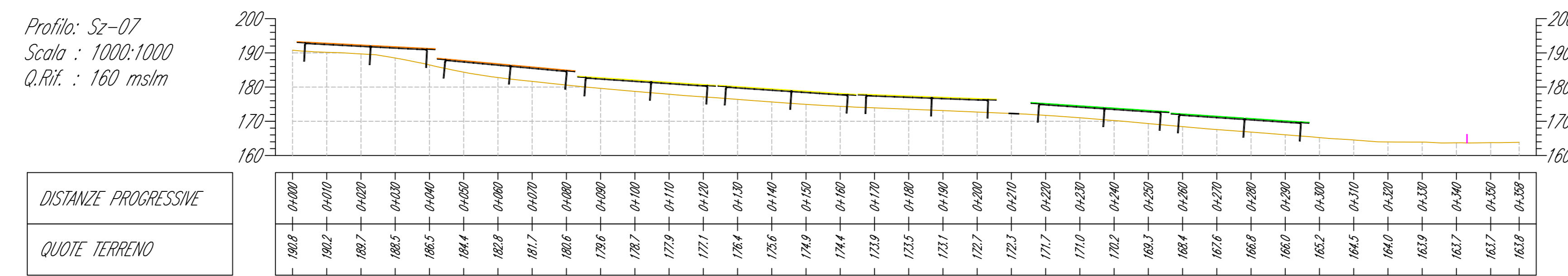
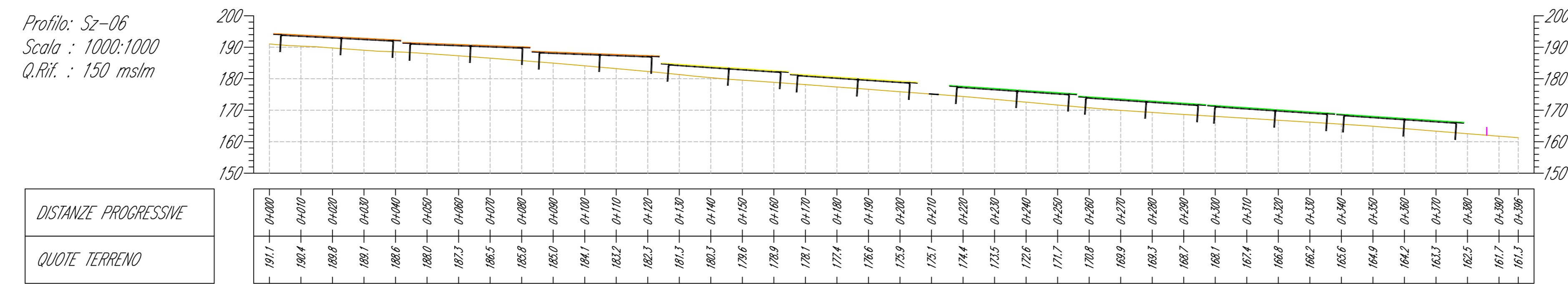
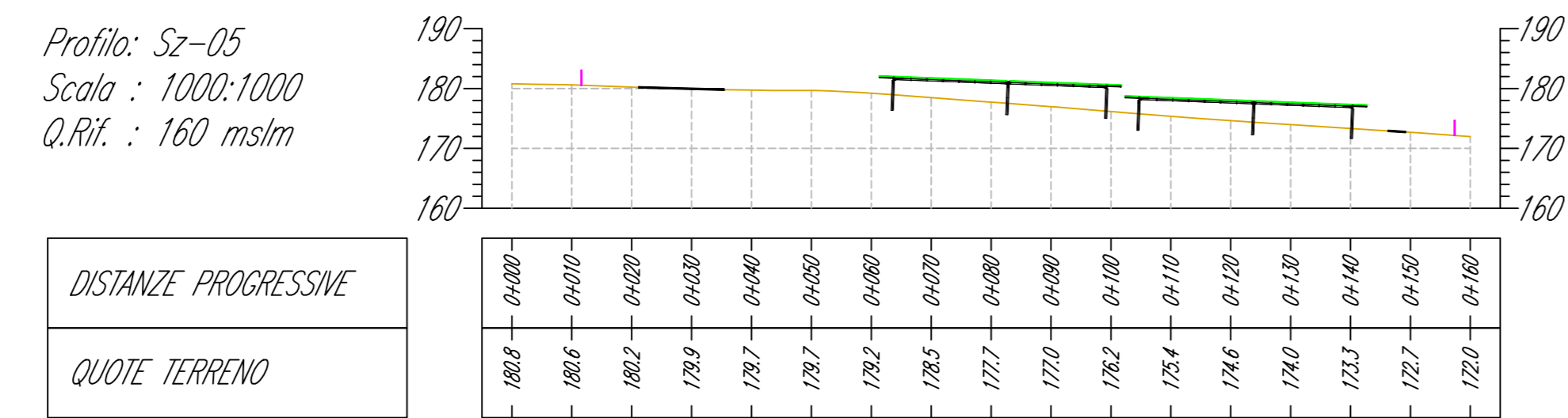
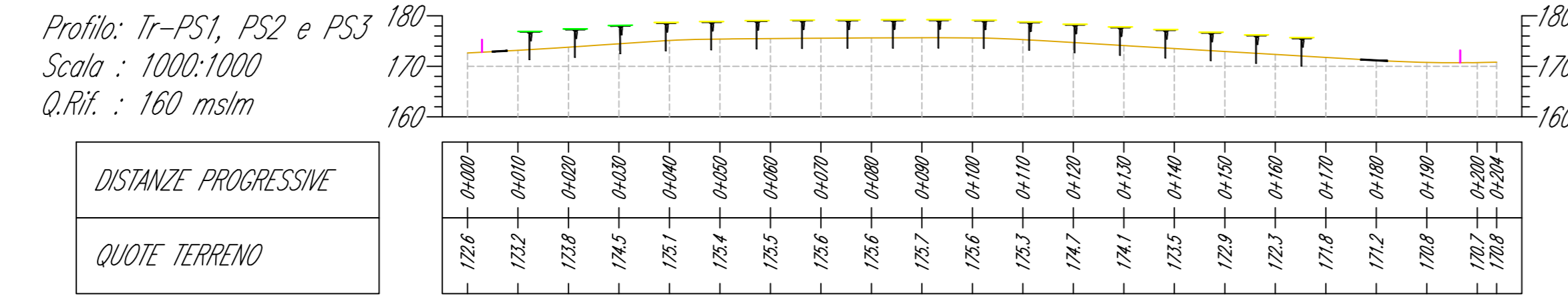


Il Tecnico
Ing. Leonardo Splendido

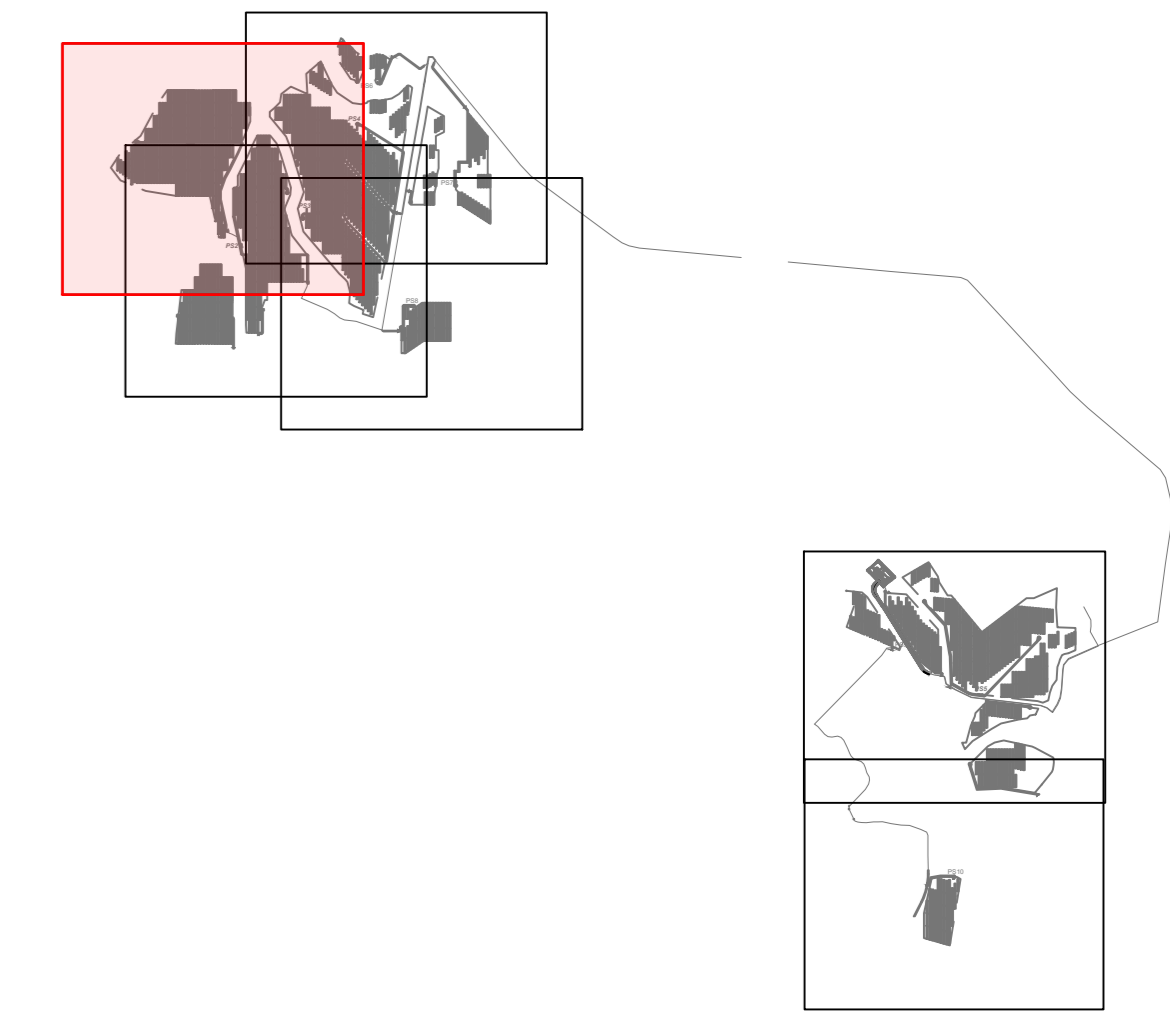
C21PWT008AFD01500_Parte 1 di 5		DEFINITIVO			
PROGETTO	REALIZZAZIONE	PROVA	PROVA	PROVA	PROVA
IMPianto Agricolo "SAN MARTINO" E OPERE DI CONNESSIONE					
PROVA	PROVA	PROVA	PROVA	PROVA	PROVA

PIANO QUOTATO, PROFILI E SEZIONI DI
PROGETTO_Parte 1 di 5

-  Profilo Terreno Esistente
-  Tracker in profilo longitudinale O-E
-  Tracker in sezione trasversale S-N
-  Recinzione
-  Viabilità Interna



KEY PLAN




REVISIONE	DATA	DESCRIZIONE	CA.	REVISOR	LS.
00	04/10/2022	PRIMA EMISSIONE	04/10/2022	09/09/2022	09/09/2022
			CA.	REVISOR	LS.
			PREPARATO	CONTROLLATO	VALIDATO
			REVISION	DATE	DESCRIPTION

Green & Green S.r.l.
Via Edmondo de Amicis, 64
87036 Roseto (CS) - Italy
P.IVA 02900010782
Ph. (+39) 0984 846295
Fax (+39) 0984 1711470
info@green.it
www.green.it



Il Tecnico
Ing. Leonardo Splendido

PROGETTO	STATO	DEFINITIVO	SCALA
C21PW008AFD01500_Parte 1 di 5	PROGETTO	DEFINITIVO	1:1.000
IMPIANTO AGRIVOLTAICO "SAN MARTINO" E OPERE DI CONNESSIONE	PROGETTO	DEFINITIVO	1:1



PIANO QUOTATO, PROFILI E SEZIONI DI
PROGETTO_Parte 1 di 5