








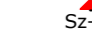

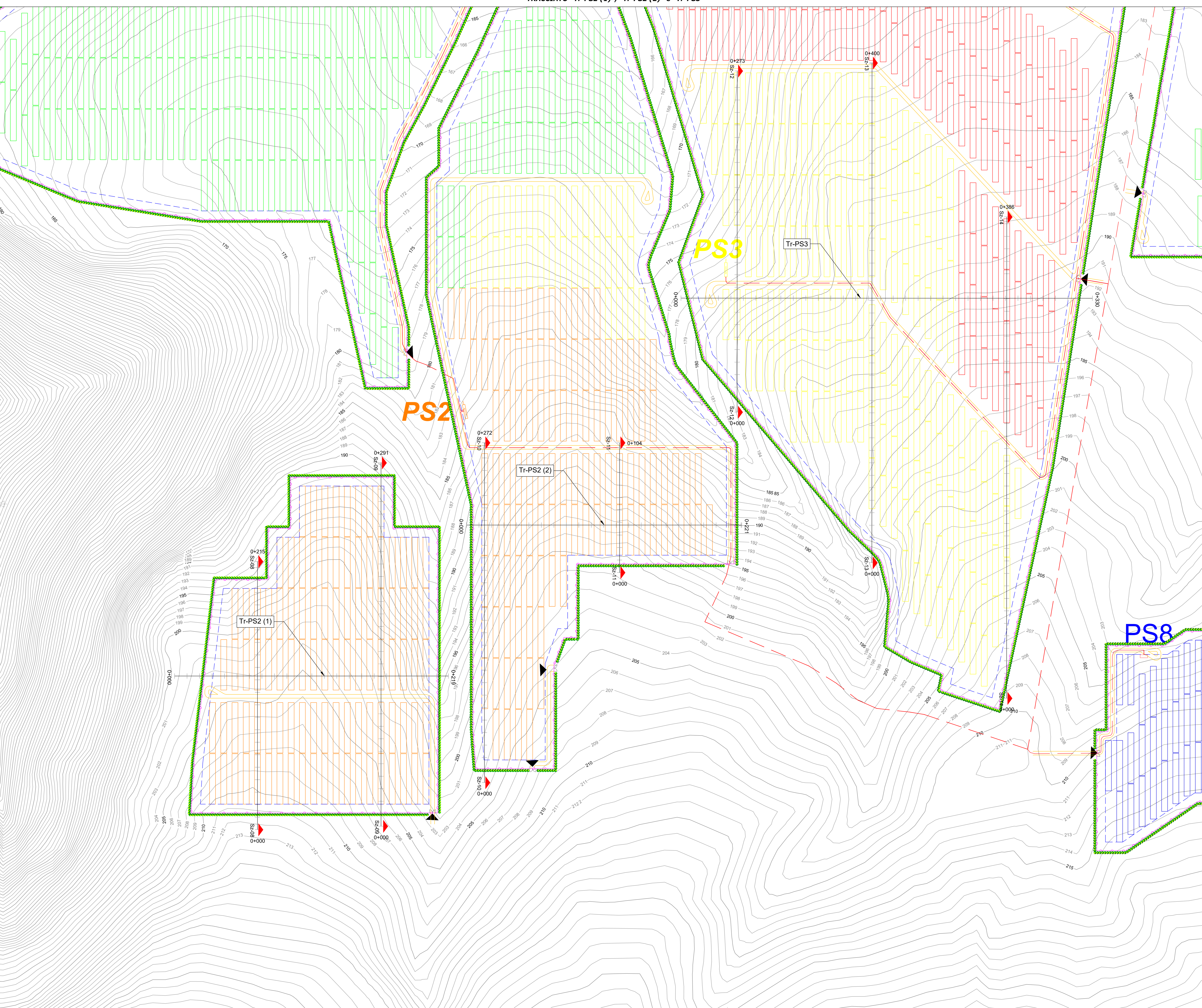
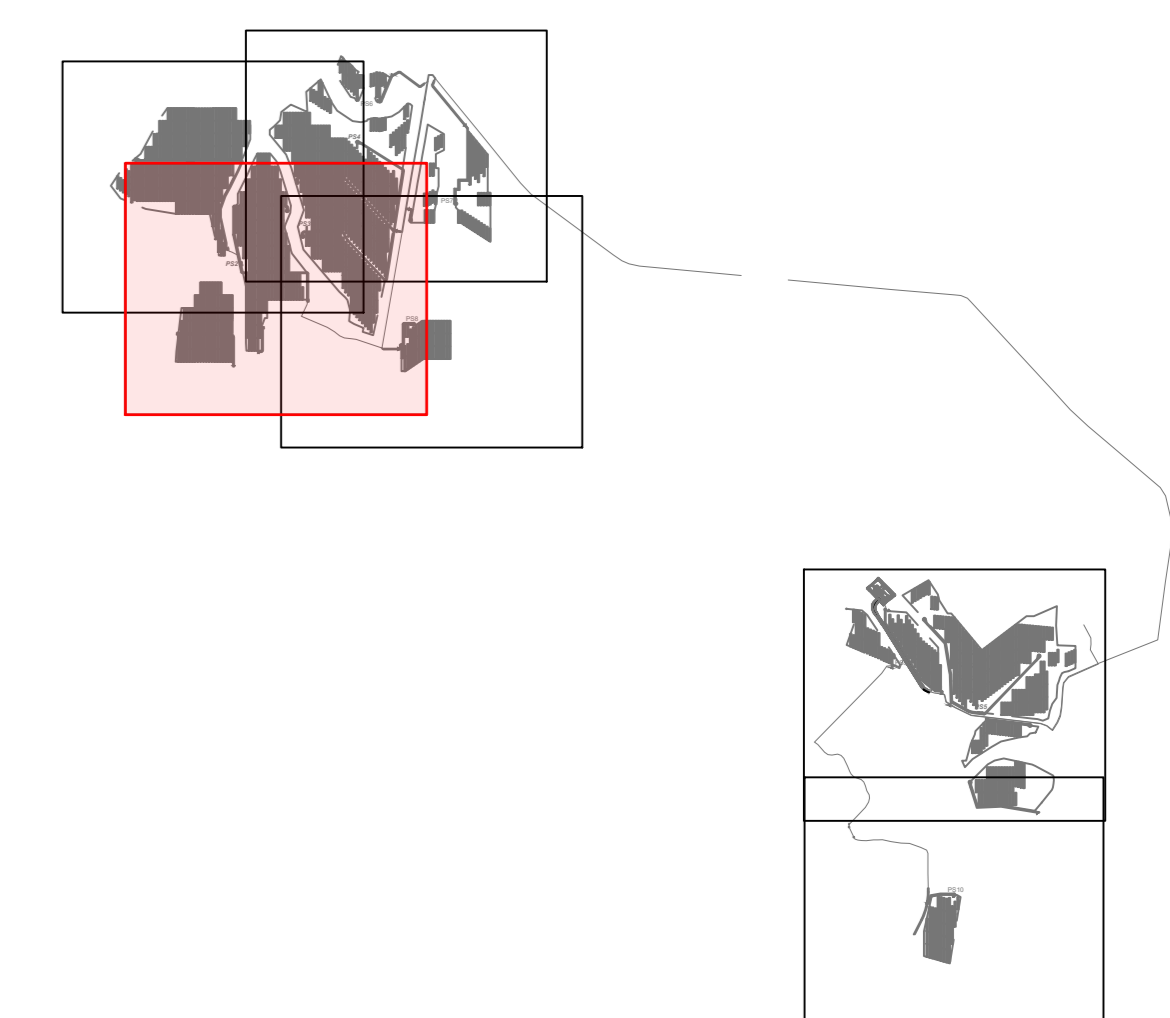


-  RECINZIONE PERIMETRALE (82,84 ha)
-  BUFFER 7 M DA RECINZIONE
-  TRACKER
-  VIABILITÀ INTERNA DI IMPIANTO
-  POWER STATION
-  CAVIDOTTO AT 30 kV
-  CAVIDOTTO AT 150 kV
-  ATTRAVERSAMENTO IN T.O.C.
-  FASCIA DI MITIGAZIONE
-  ACCESSO
-  LINEA DI SEZIONE



KEY PLAN



REVISIONE	DATA	DESCRIZIONE	PRODOTTO	CONTROLLATO	VALIDATO
00	04/10/2022	PRIMA EMISSIONE	04/10/2022	09/09/2022	09/09/2022

Green & Green S.r.l.  
Via Edmondo de Amicis, 64  
47036 Roncole (CS) - Italy  
P.IVA 02900010782  
Ph. (+39) 0584 846295  
Fax (+39) 0584 171470  
info@greengreen.it  
www.greengreen.it








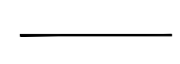
Il Tecnico  
Ing. Leonardo Splendido

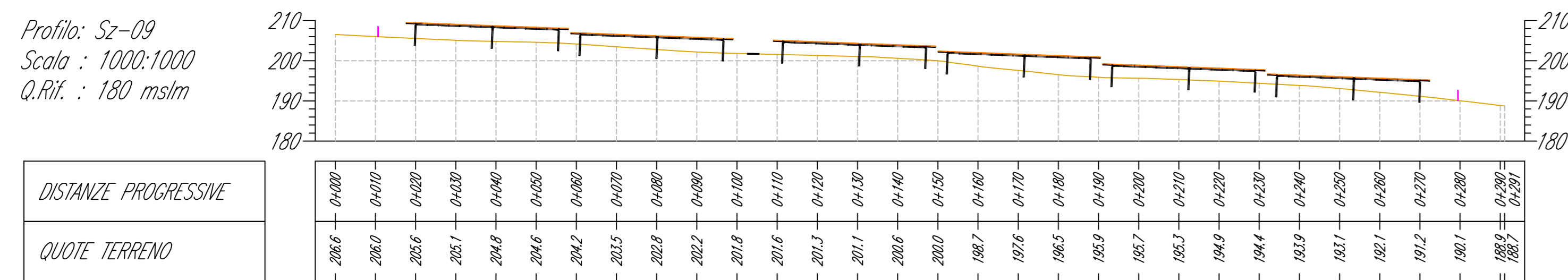
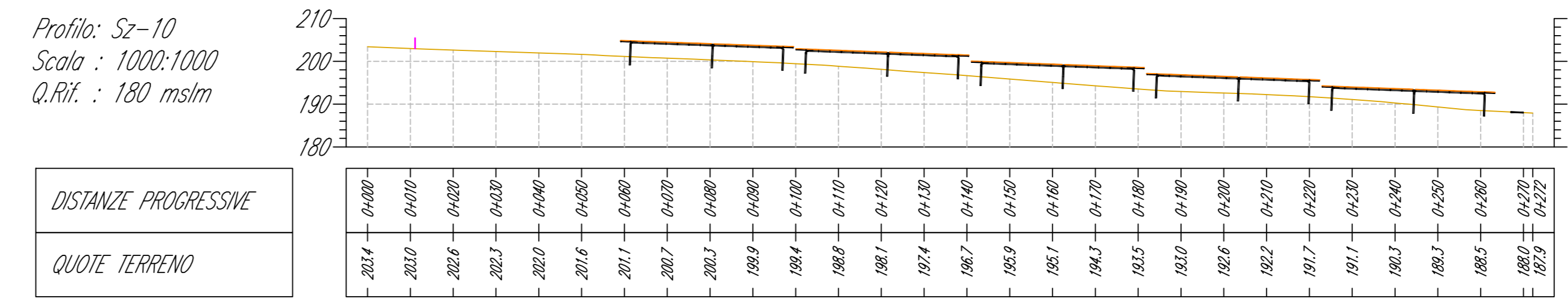
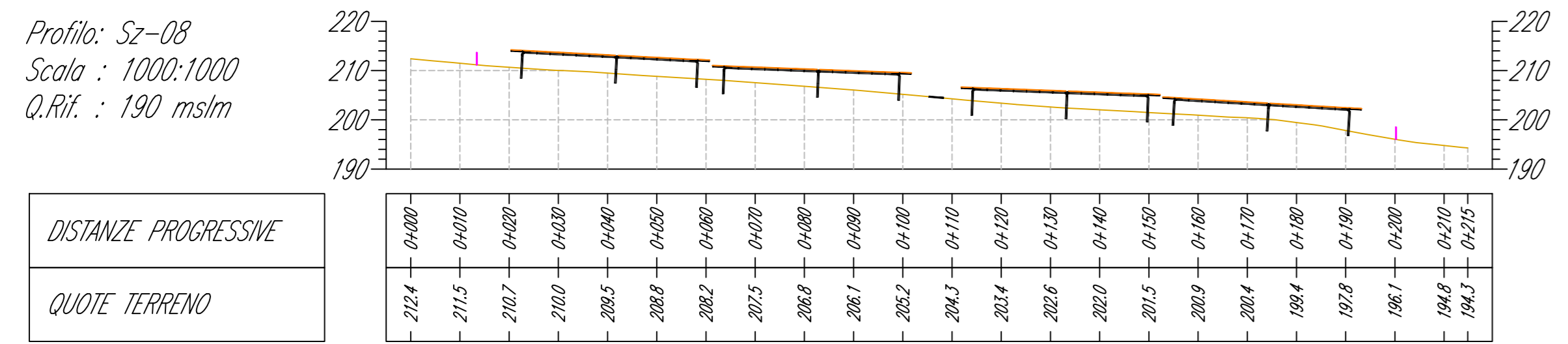
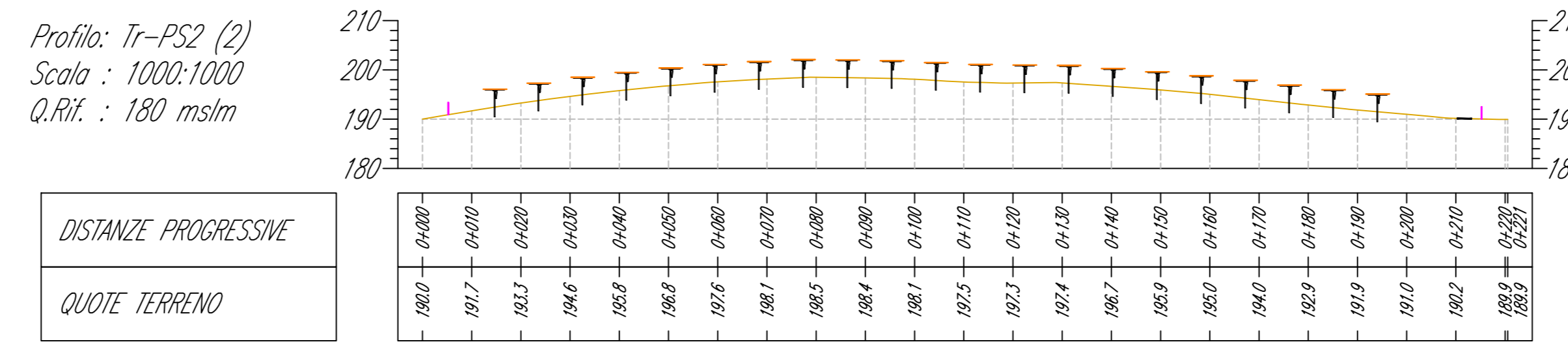
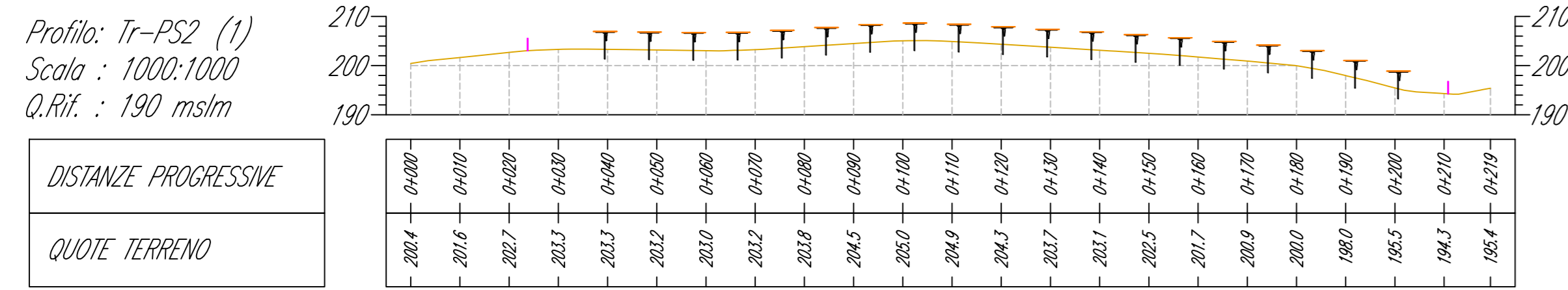
PROGETTO	STATO	SCALA	FOGLIO
C21PW7008AFD01500_Parte 2 di 5	DEFINITIVO	A0	1:1.000

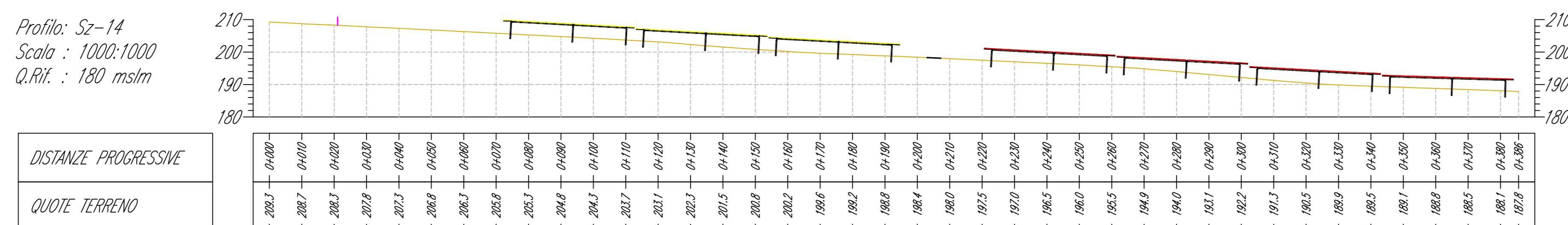
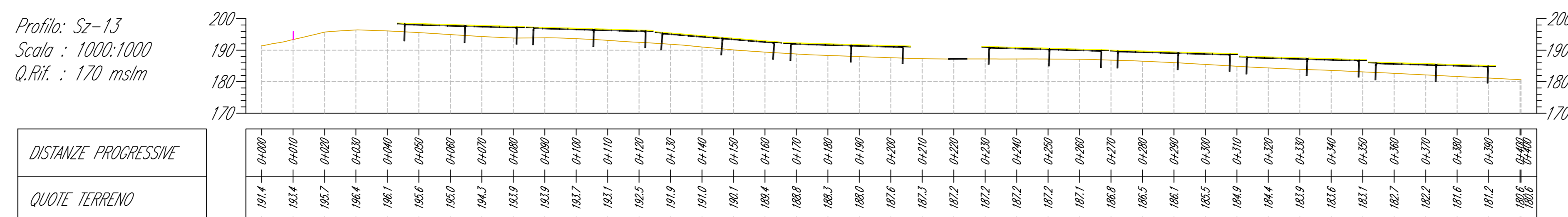
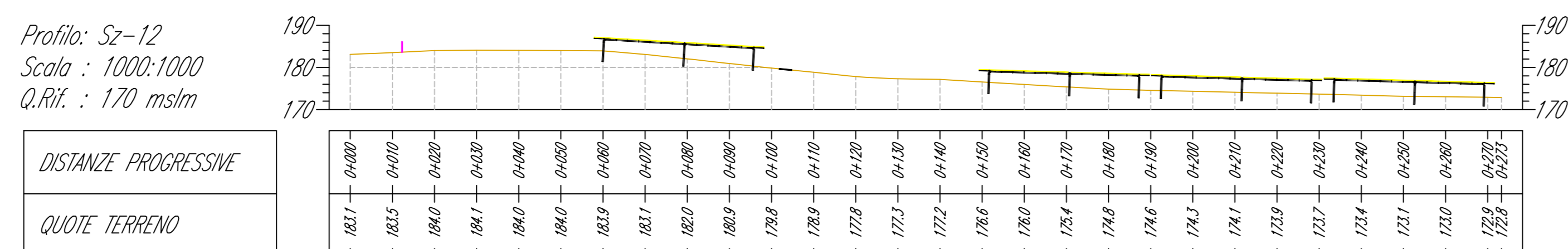
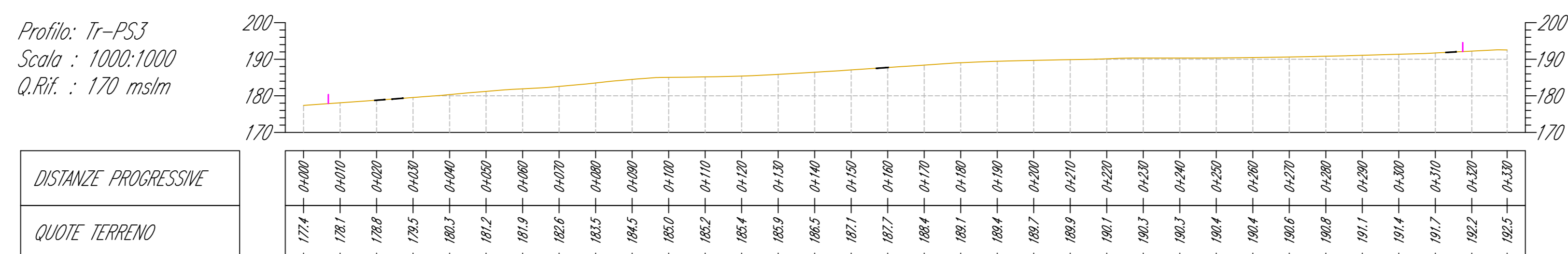
IMPIANTO AGRIVOLTAICO  
"SAN MARTINO"  
E OPERE DI CONNESSIONE

PIANO QUOTATO, PROFILI E SEZIONI DI  
PROGETTO\_Parte 2 di 5



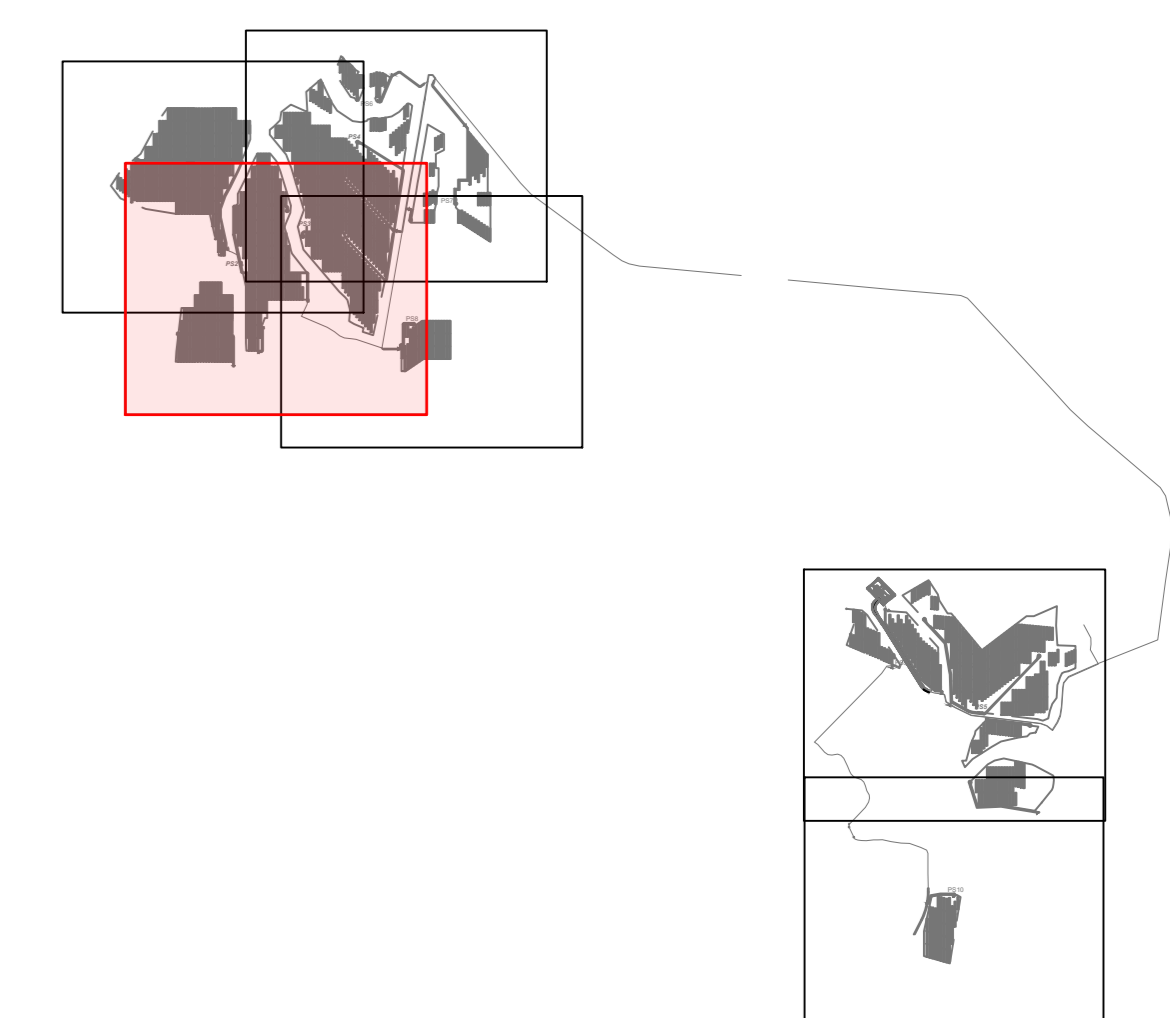
-  Profilo Terreno Esistente
-  Tracker in profilo longitudinale O-E
-  Tracker in sezione trasversale S-N
-  Recinzione
-  Viabilità Interna





- Profilo Terreno Esistente
- Tracker in profilo longitudinale O-E
- Tracker in sezione trasversale S-N
- Recinzione
- Viabilità Interna

KEY PLAN



REVISIONE	DATA	DESCRIZIONE	CA	RB	LS
00	04/10/2022	PRIMA EMISSIONE	04/10/2022	08/09/2022	09/09/2022
			PREPARATO	CONTROLLATO	VALIDATO

Green & Green S.r.l.  
Via Edmondo de Amicis, 64  
87036 Rende (CS) - Italy  
P.IVA 02900010762  
Ph. (+39) 0984 846295  
Fax (+39) 0984 171470  
info@green.it  
www.green.it

**green & green**  
WE ENGINEERING

Il Tecnico  
Ing. Leonardo Splendido

PROGETTO	PRODOTTORE	DEFINITIVO	DATA
C21PW7008AFD01500_Parte 2 di 5	IMPIANTO AGRIVOLTAICO "SAN MARTINO" E OPERE DI CONNESSIONE	A0	1:1.000
		1:1	6/17

**PIANO QUOTATO, PROFILI E SEZIONI DI PROGETTO\_Parte 2 di 5**