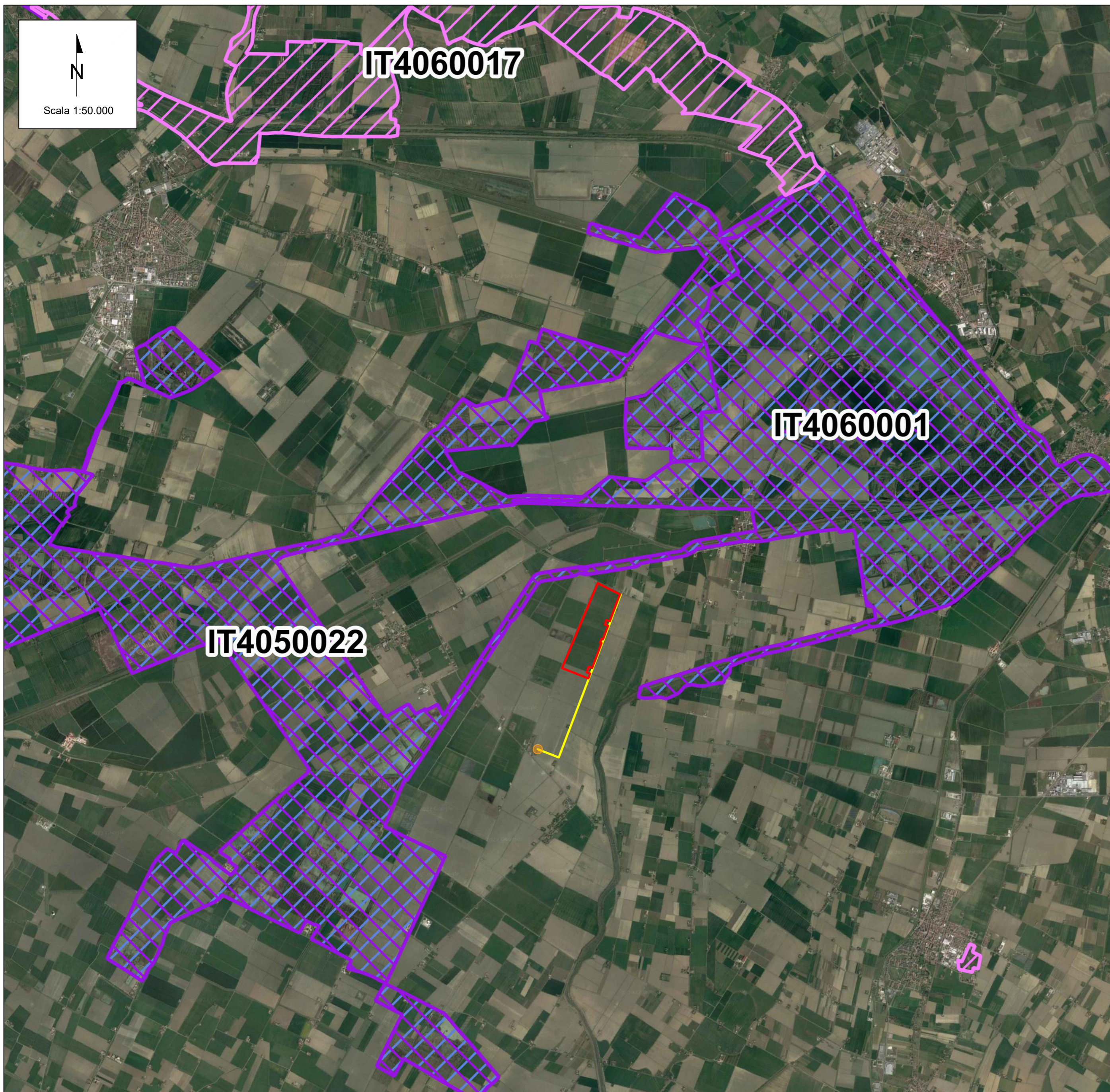




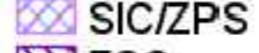
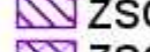
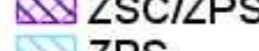
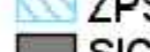



SIA-CARTA DEI VINCOLI NAZIONALI - AREE RETE NATURA 2000

LEGENDA



-  Linea di connessione
-  Area d'impianto
-  Cabina Primaria "Schiappa 132 kV"
-  SIC
-  SIC/ZPS
-  ZSC
-  ZSC/ZPS
-  ZPS
-  SIC

- Aree Rete Natura 2000 prossime ad area di impianto:
- ZSC/ZPS: IT406001 Valli di Argenta;
 - ZSC/ZPS: IT4050022 Biotipi e ripristini ambientali di Medicina e Molinella;
 - SIC: IT4060017 Po di Primaro e bacini di Traghetto;

Fonte: WMS ufficiale Geoportale Nazionale

| | | | | | |
|---|----------|--|--|-----------------|-----------------|
| 00 | | 26/01/2023 | Emissione Definitiva | M.Gallina | V.Bretti |
| REV. | DATE | DESCRIPTION | PREPARED | CHECKED | APPROVED |
| CONTRACTOR'S LOGO | | PROJECT: Portonovo FV (15534) | | | |
|  | | FILE NAME: GRE.EEC.D.21.IT.P.15534.00.026.00_SIA-CARTA DEI VINCOLI NAZIONALI.DWG | | | |
|  | | CLASSIFICATION: Company | FORMAT: A2 | SCALE: 1:50.000 | PLOT SCALE: 1:1 |
| Engineering & Construction | | UTILIZATION SCOPE: Basic Design | TITLE: SIA-CARTA DEI VINCOLI NAZIONALI | | |
| GRE VALIDATION | | GRE CODE | | | |
| VALIDATED BY: PE EGP | GRE CODE | | | | |
| VERIFIED BY: Discipline EGP | GROUP | FUNCTION | TYPE | ISSUER | COUNTRY |
| COLLABORATORS | TEC. | PLANT | SYSTEM | PROGRESSIVE | REVISION |
| GRE EEC D 21 I T P 1 5 5 3 4 0 0 0 2 6 0 0 | | | | | |