



REGIONE PUGLIA



CITTA' DI BRINDISI

COSTRUZIONE ED ESERCIZIO DI UN IMPIANTO "AGROVOLTAICO" PER PRODUZIONE DI ENERGIA ELETTRICA DA FONTE FOTOVOLTAICA AVENTE POTENZA IN IMMISSIONE PARI A 12,5 MWe POTENZA MODULI PARI A 12,52 MWp CON RELATIVO COLLEGAMENTO ALLA RETE ELETTRICA - IMPIANTO DENOMINATO "BRINDISI TORMARESCA" UBICATO IN AGRO DEL COMUNE DI BRINDISI.

progettato e sviluppato da



Via Gen. Giacinto
Antonelli n.3
70043
Monopoli (BA)



Ing. Emanuele Verdoscia
Via Villafranca n.42
73041
Carmiano (LE)

DATI CATASTALI:

Brindisi Fg. 171 P.IIa 8,9,10,21,25,532,536,677,681,683,685,687,689

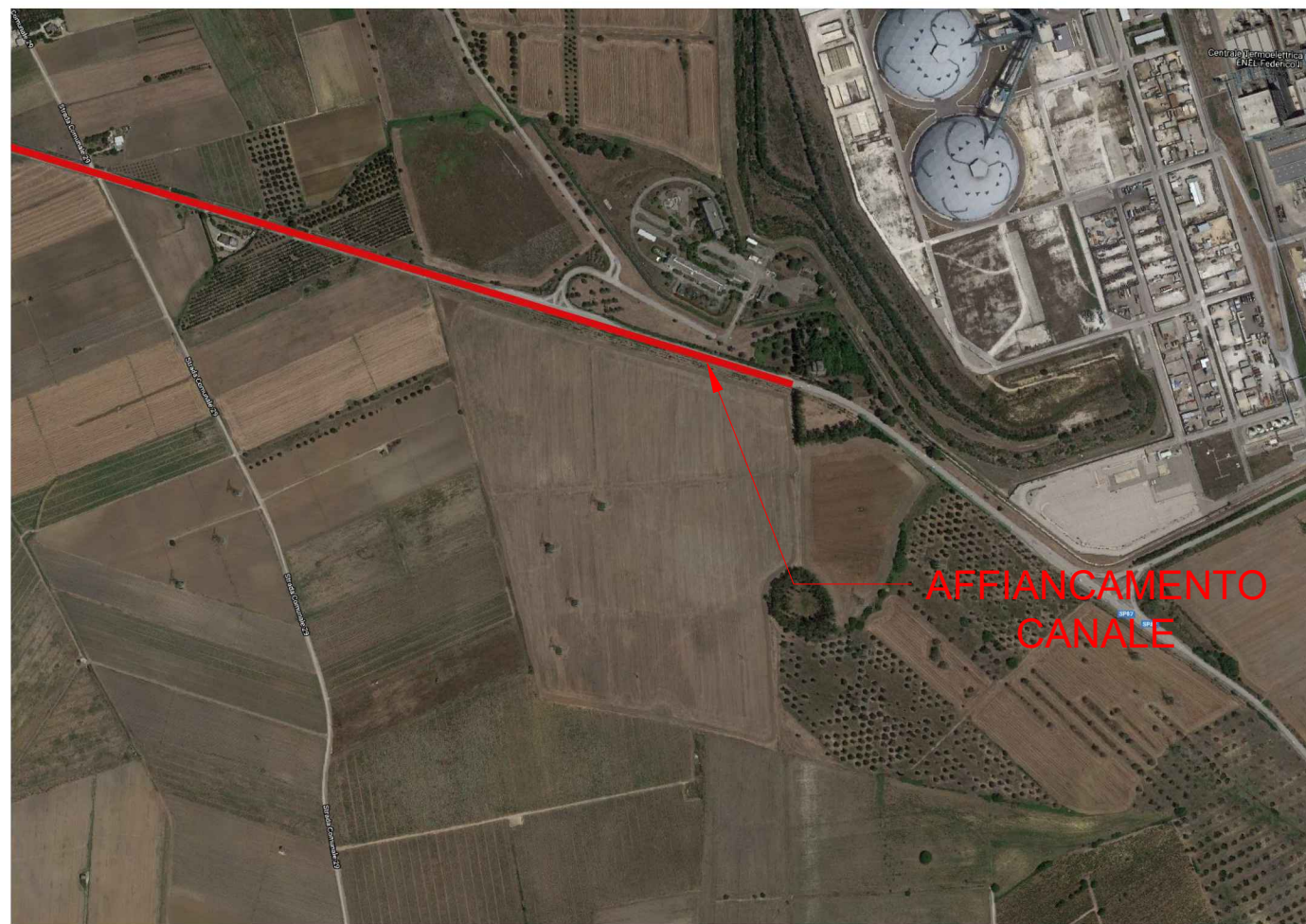


Elaborato

Planimetria opere su Catastale - aerofoto - igm relativa a attraversamenti e fiancheggiamenti

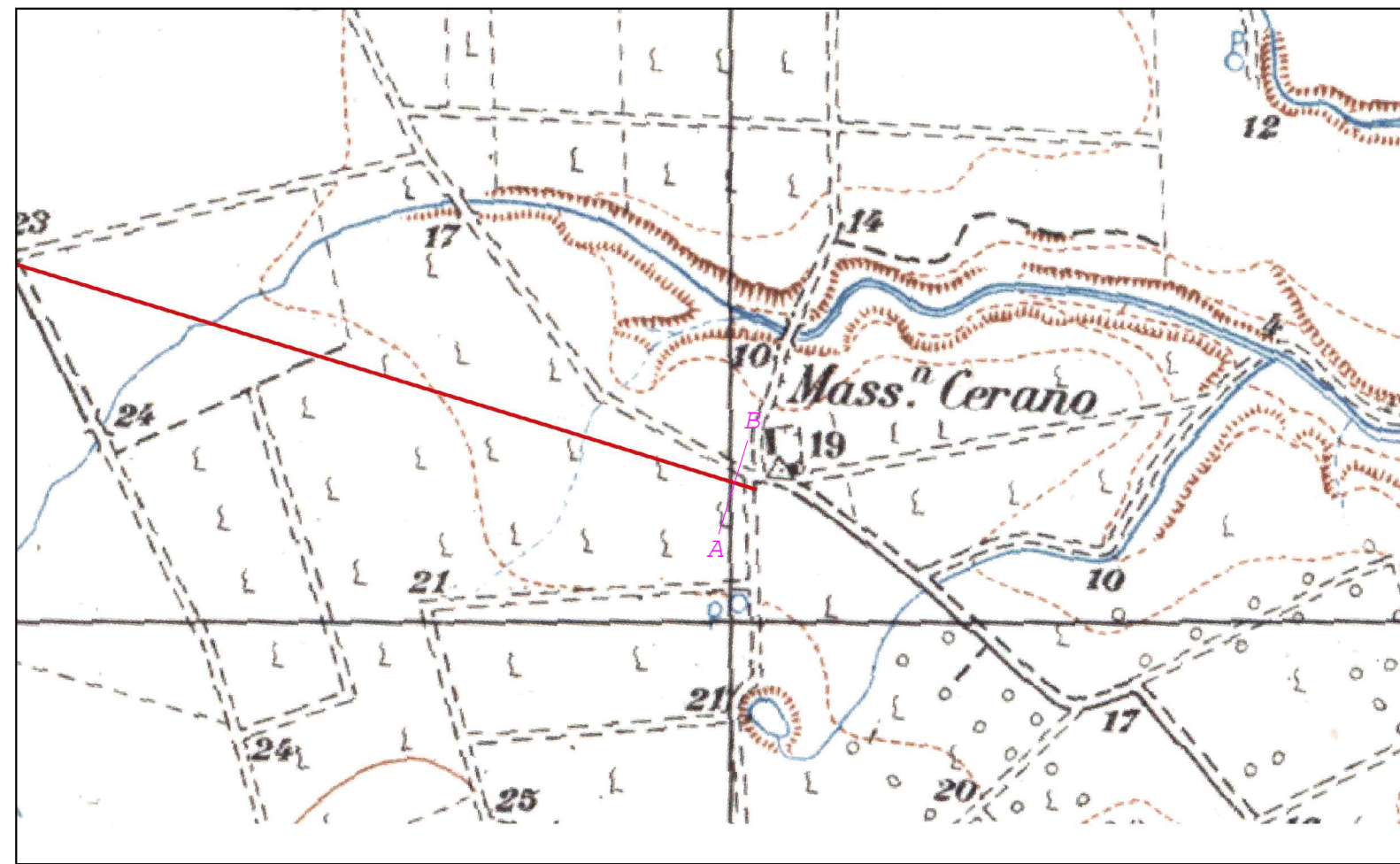
Tecnico

Ing. Emanuele Verdoscia

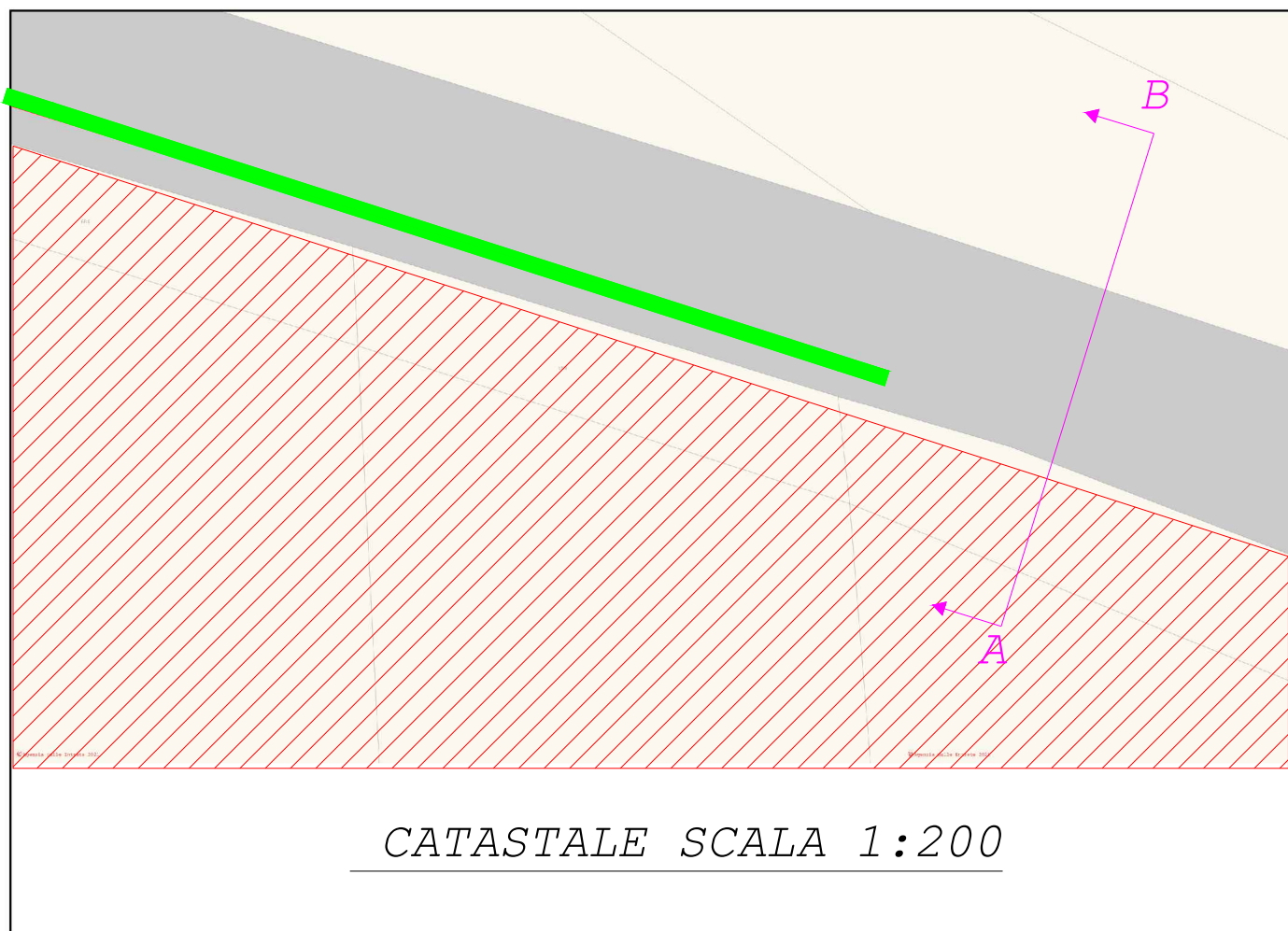


AFFIANCAMENTO
CANALE

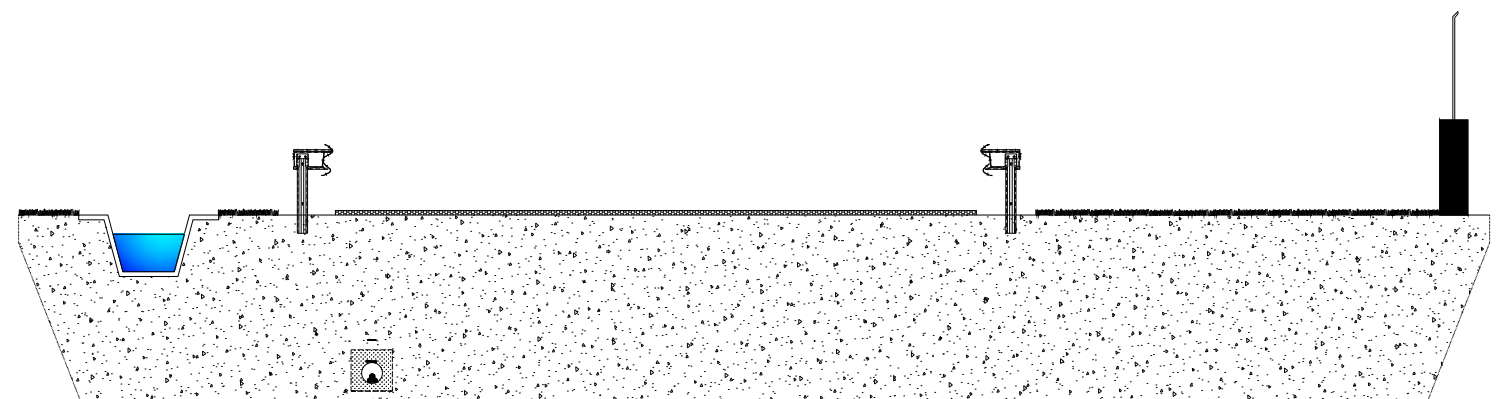
INQUADRAMENTO AREA SU AEROFOTO

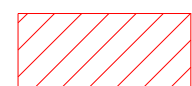



IGM SCALA 1:5000

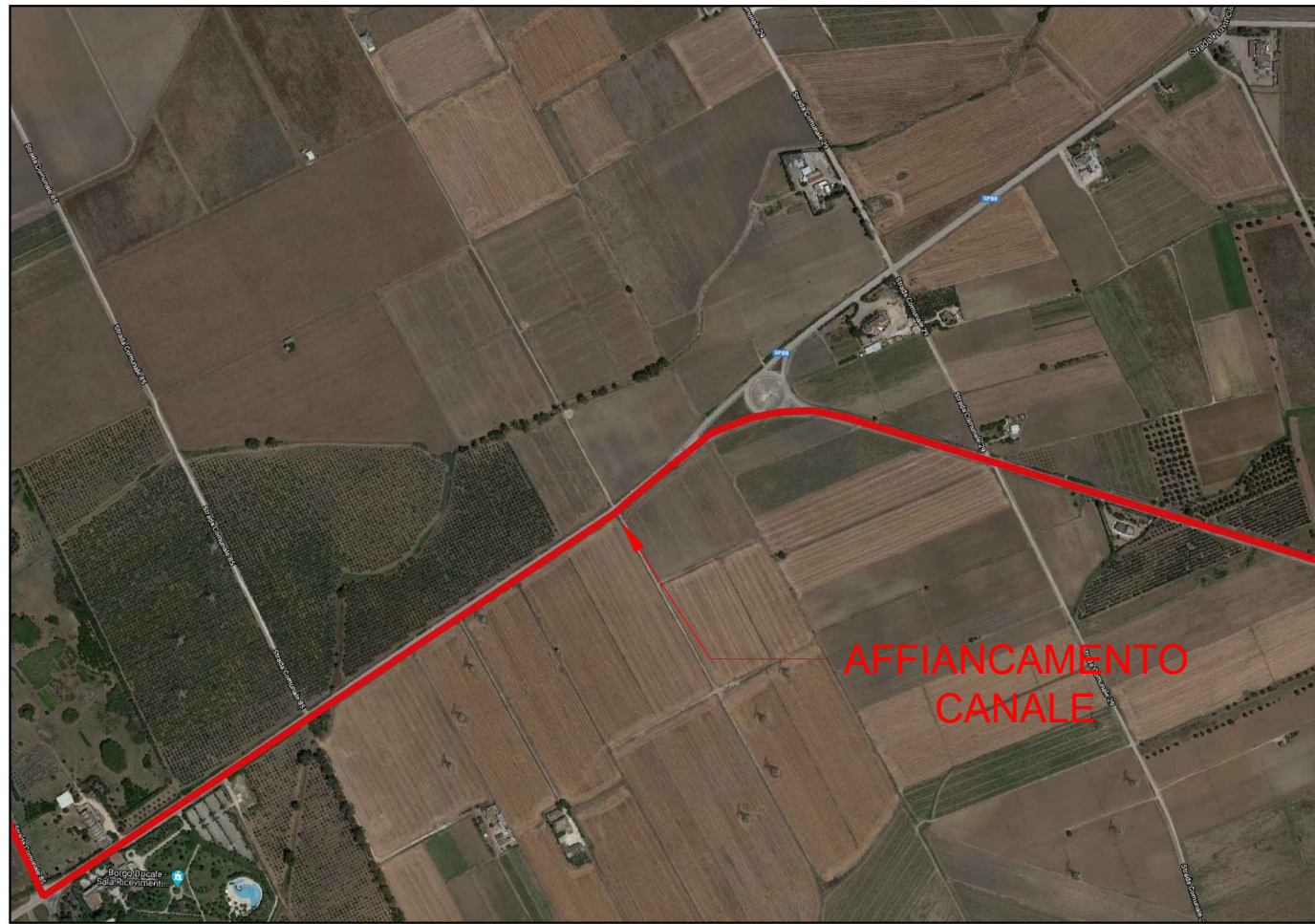


CATASTALE SCALA 1:200

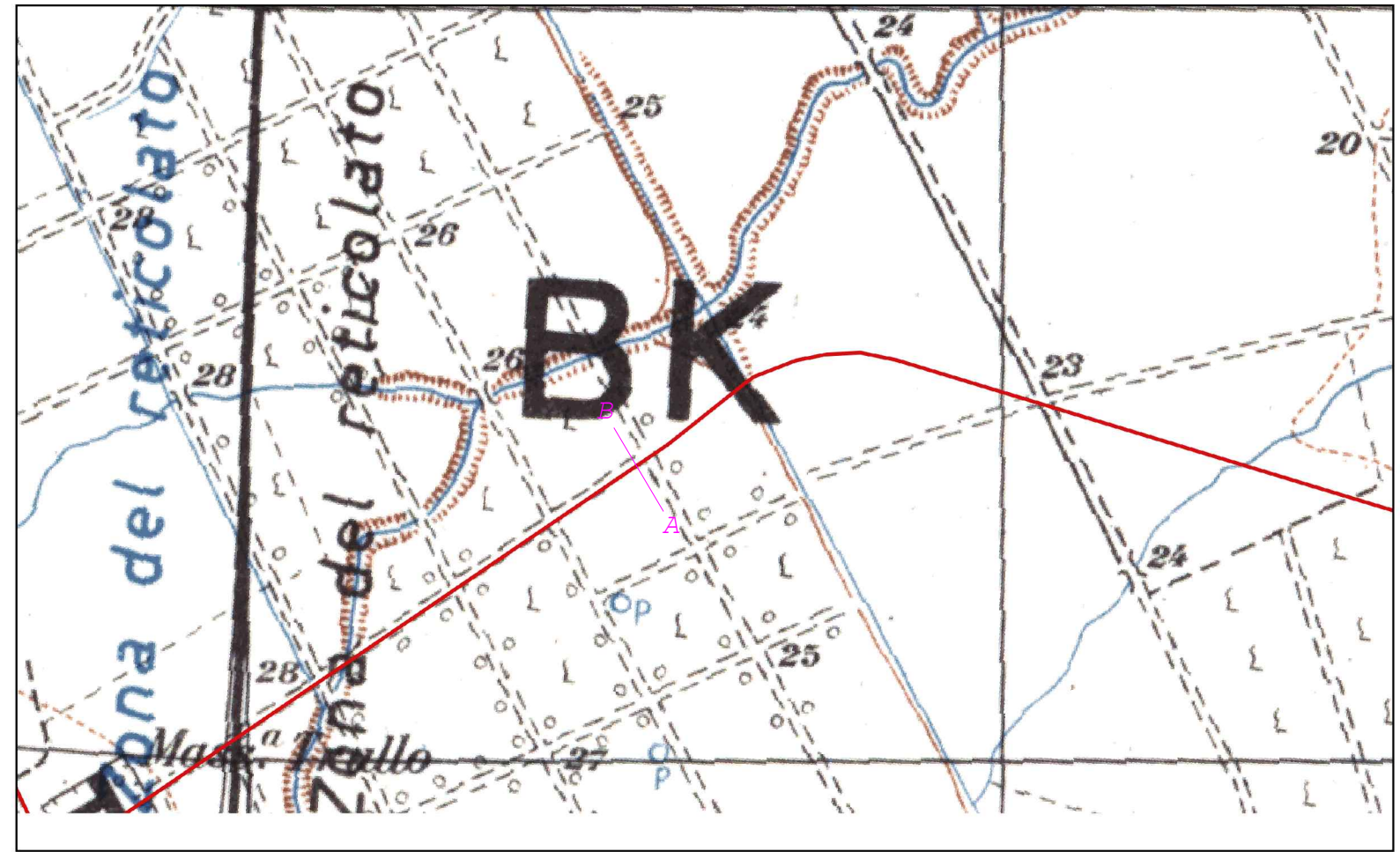


-  AREA IMPIANTO
-  LINEA CONNESSIONE

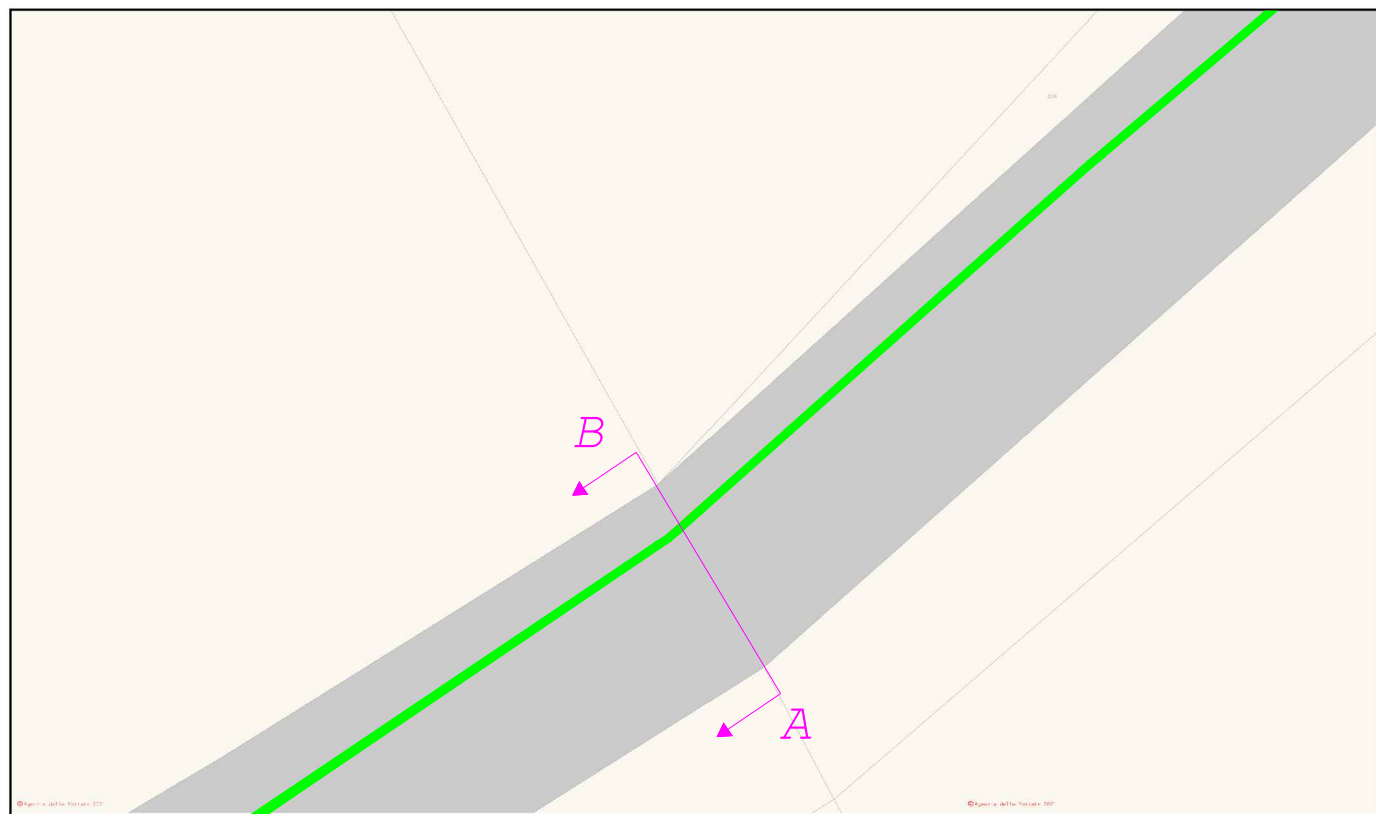
AFFIANCAMENTO CANALE



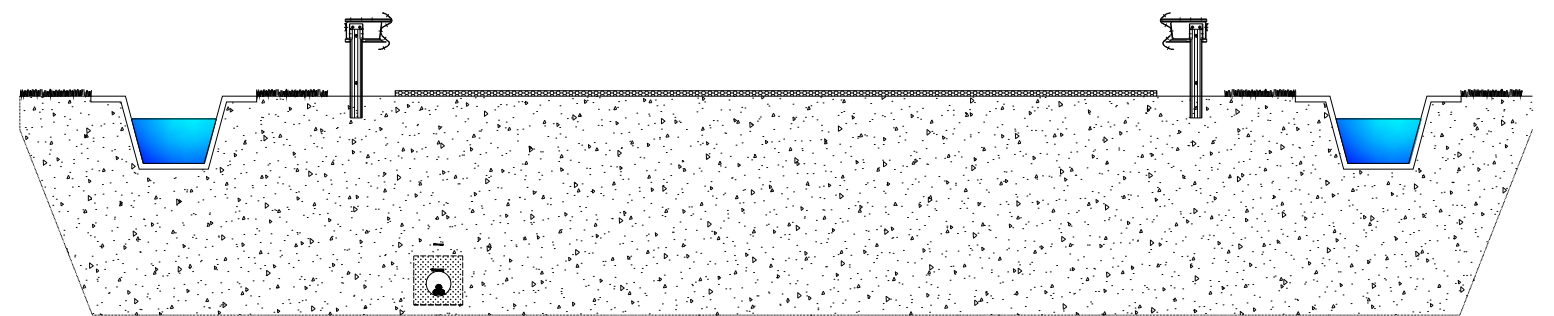
INQUADRAMENTO AREA SU AEROFOTO



IGM SCALA 1:5000



CATASTALE SCALA 1:200



A

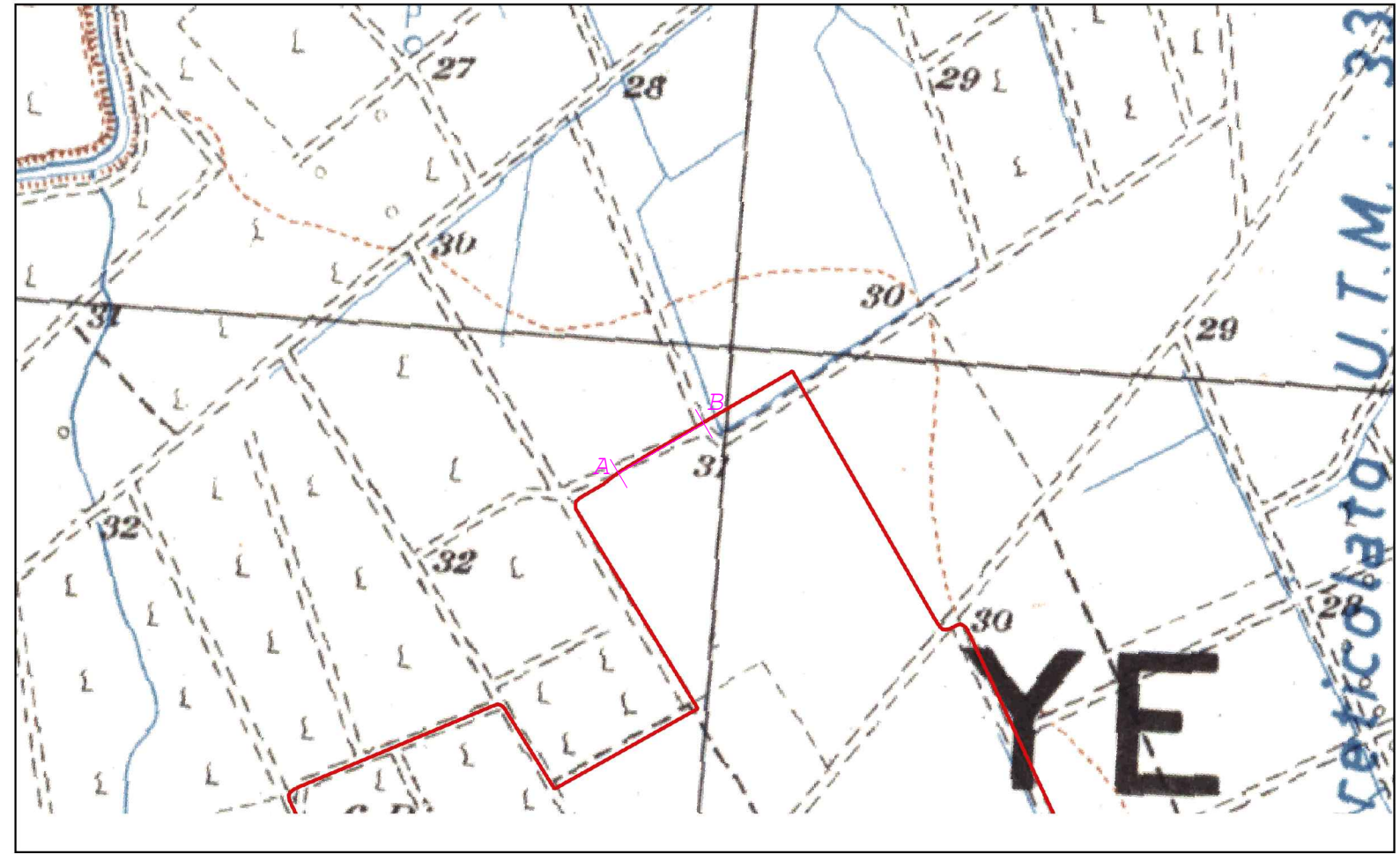
B

 LINEA CONNESSIONE

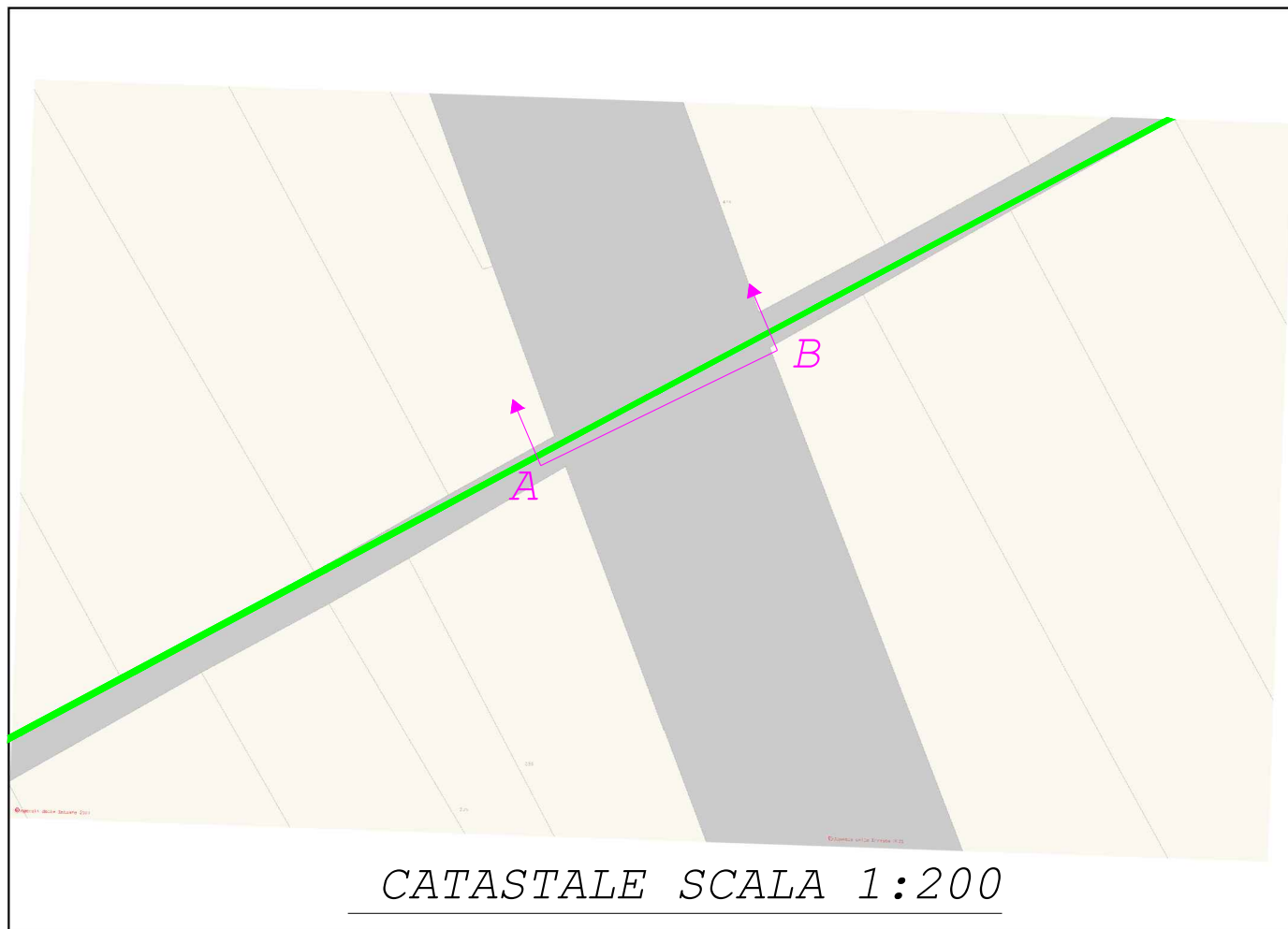
AFFIANCAMENTO CANALE



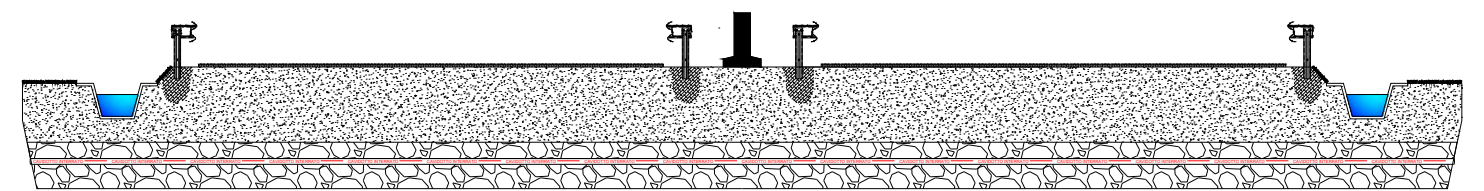
INQUADRAMENTO AREA SU AEROFOTO



IGM SCALA 1:5000



CATASTALE SCALA 1:200

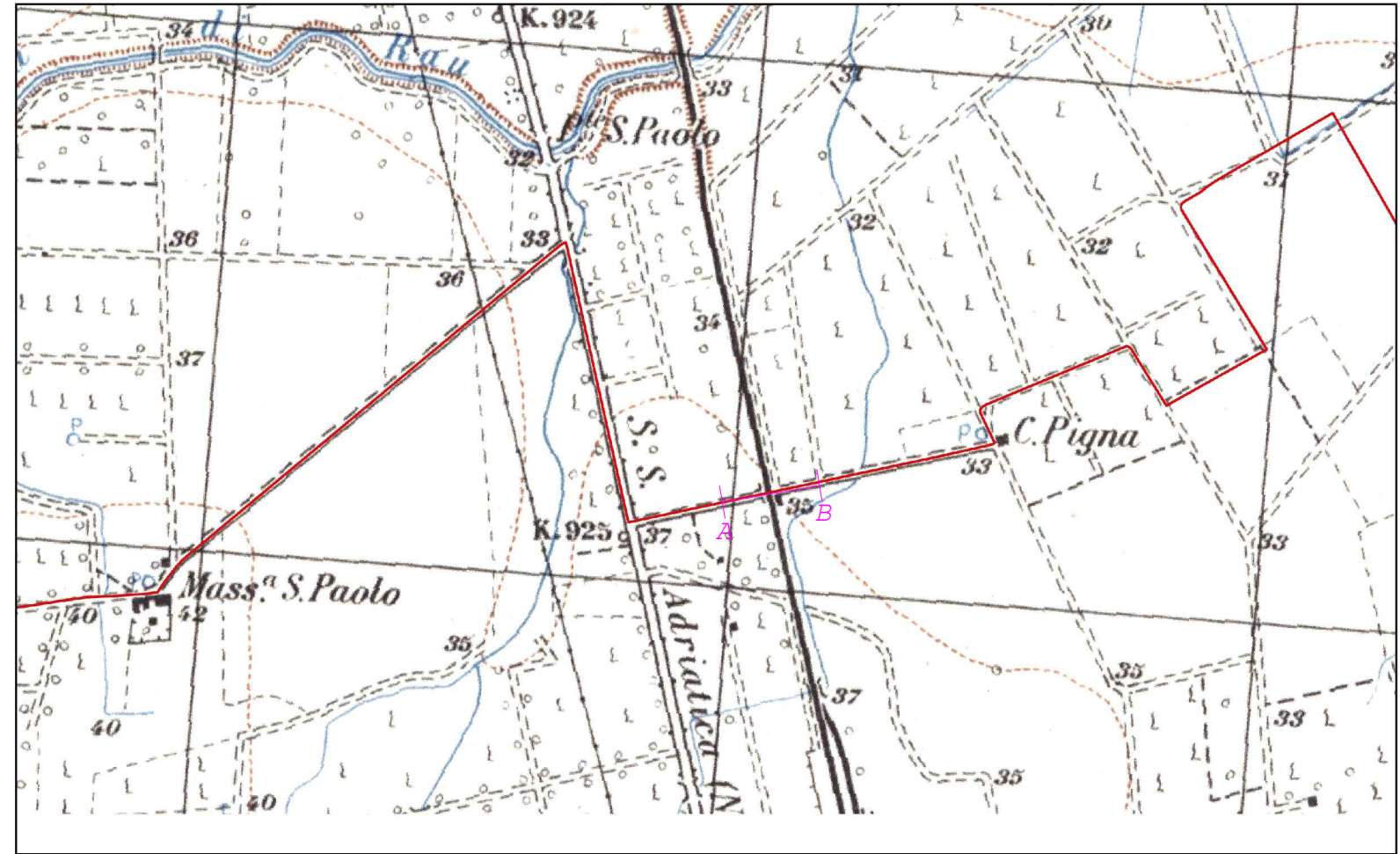


 LINEA CONNESSIONE

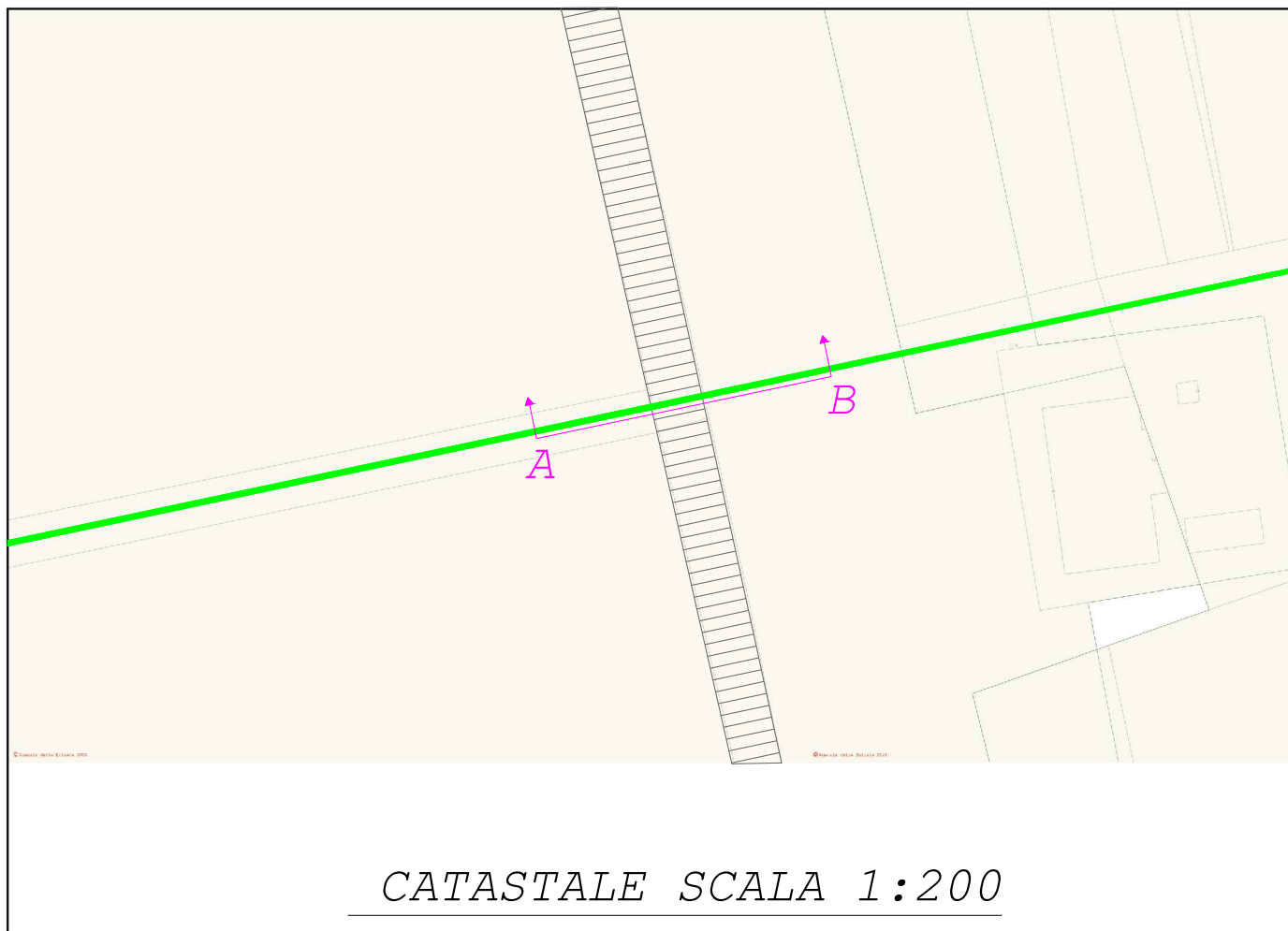
PASSAGGIO SS613



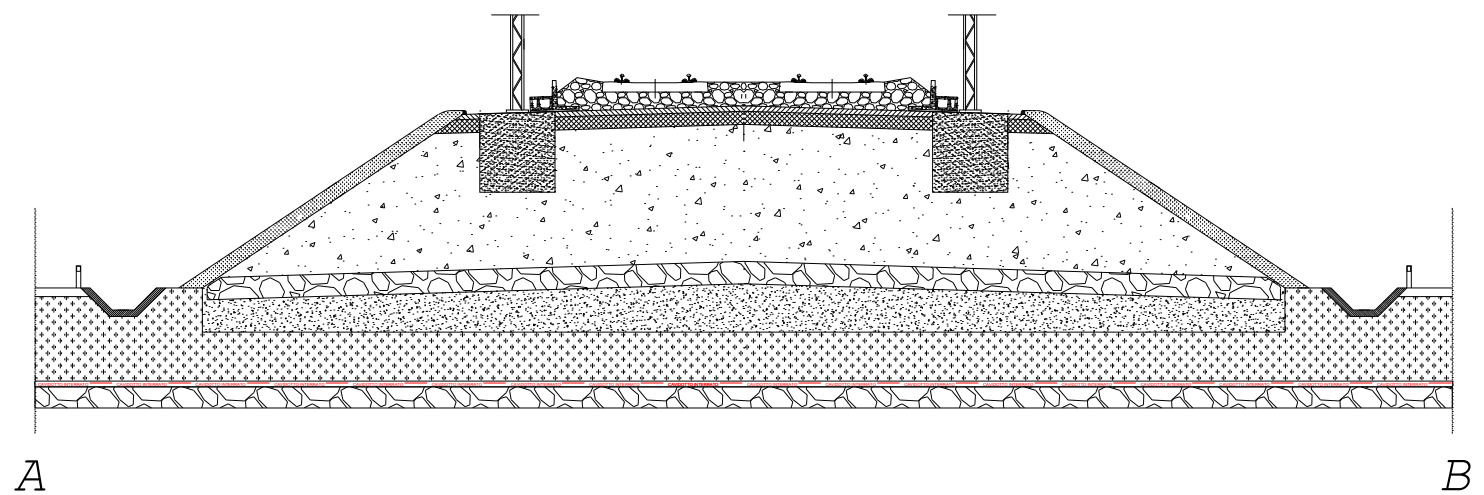
INQUADRAMENTO AREA SU AEROFOTO



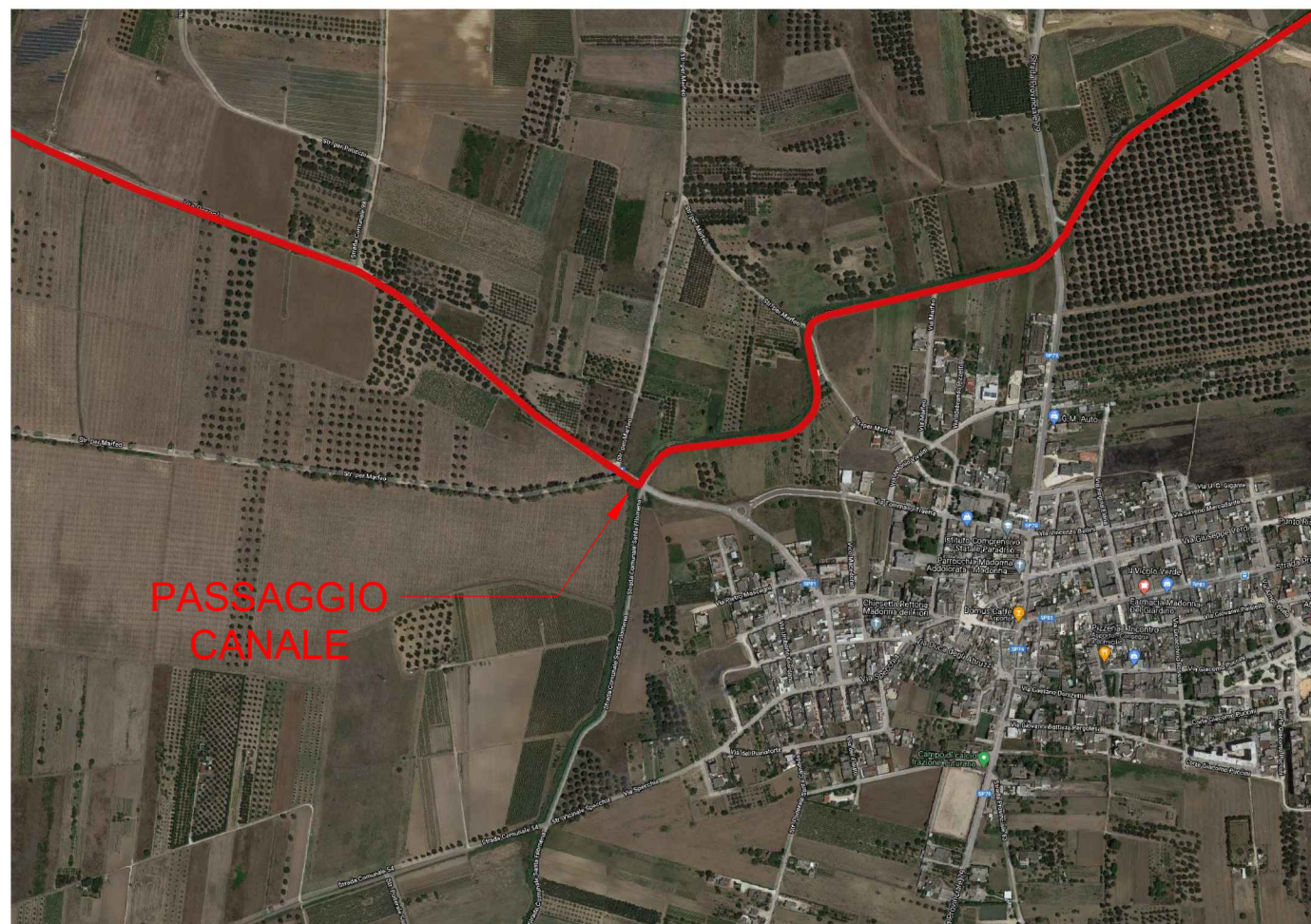
IGM SCALA 1:5000



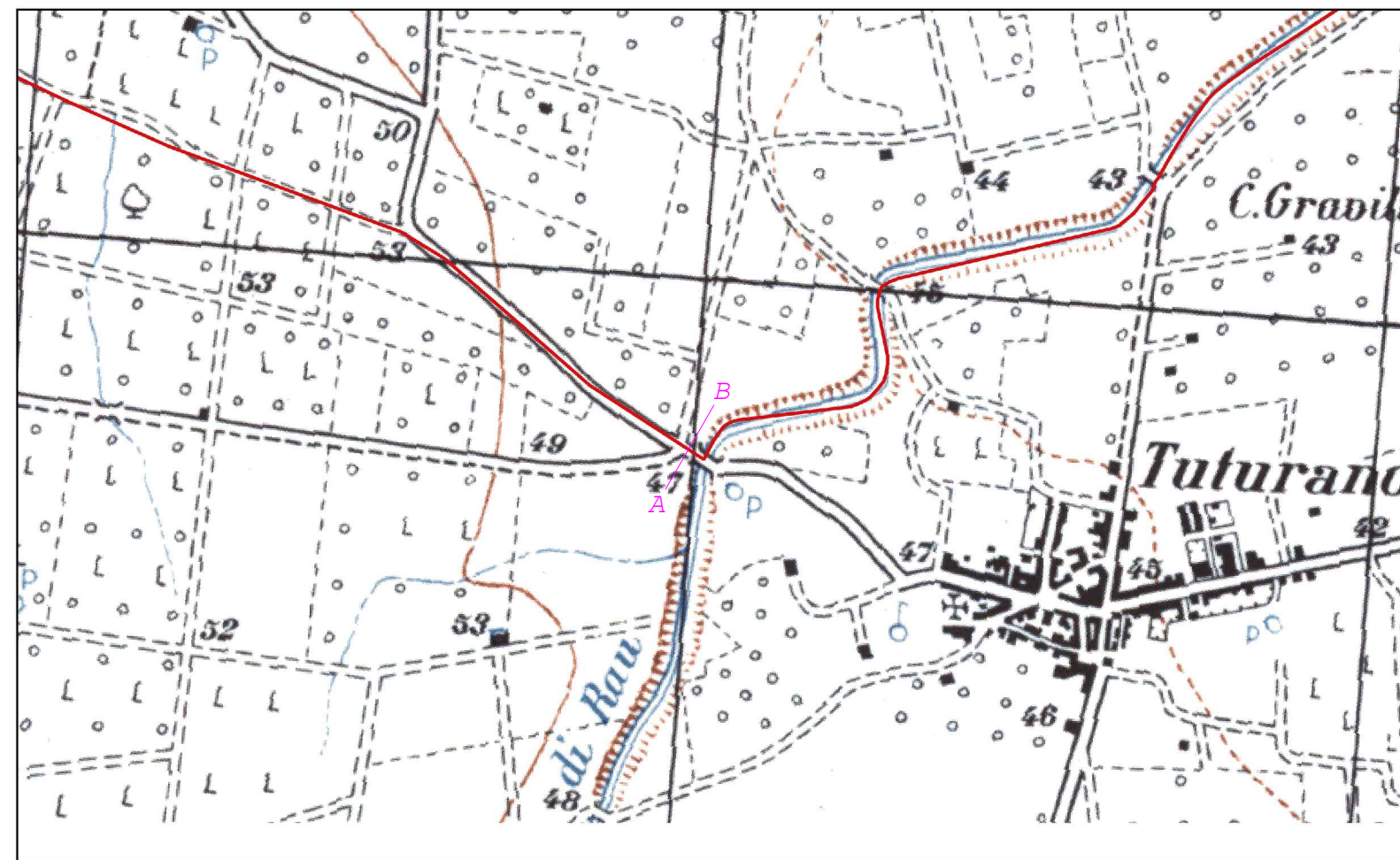
CATASTALE SCALA 1:200



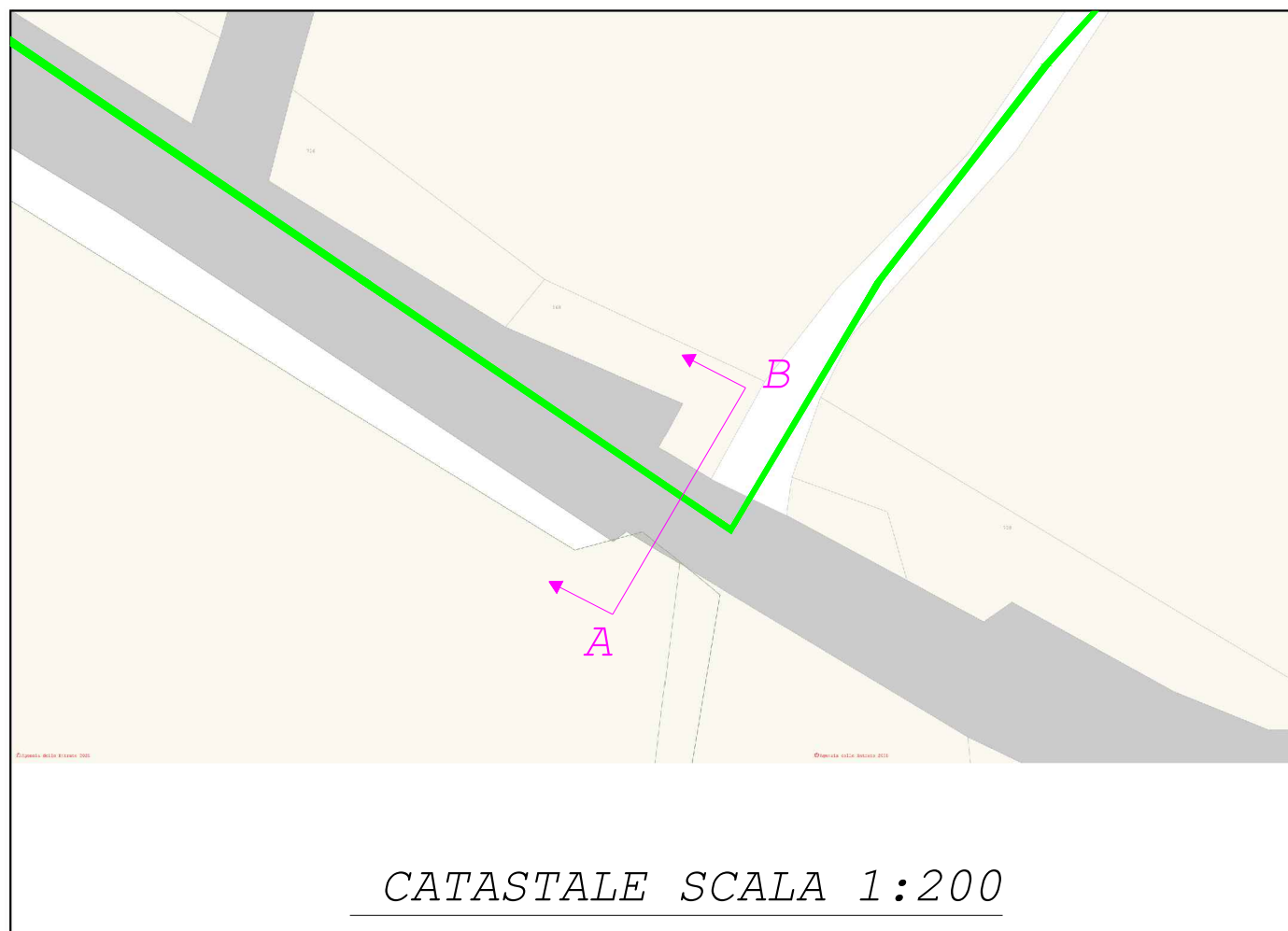
PASSAGGIO FERROVIA



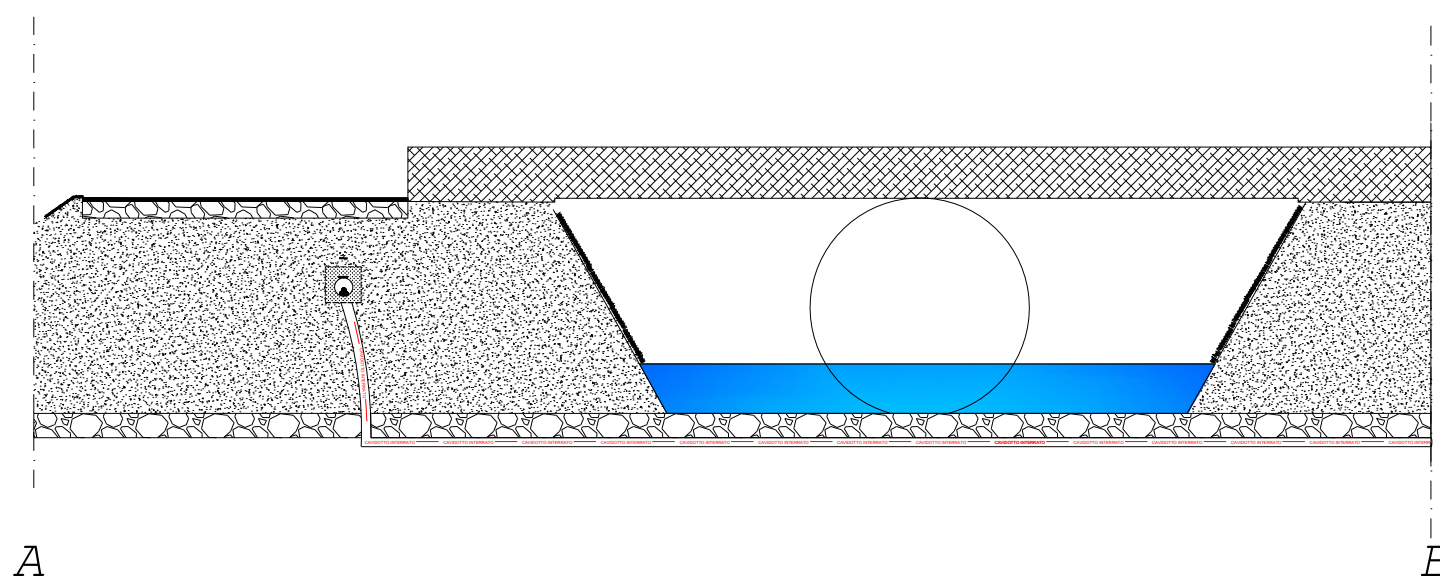
INQUADRAMENTO AREA SU AEROFOTO



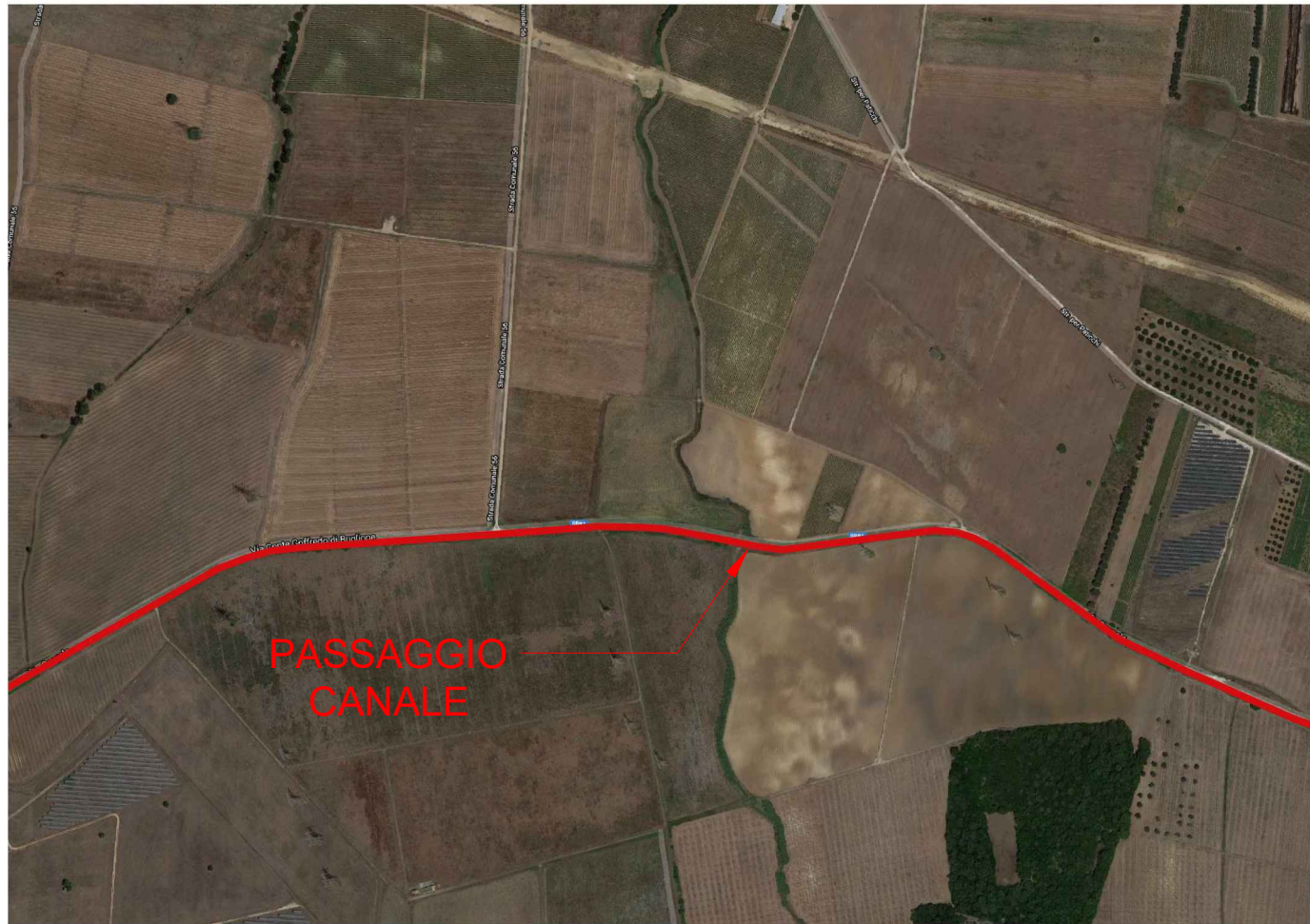
IGM SCALA 1:5000



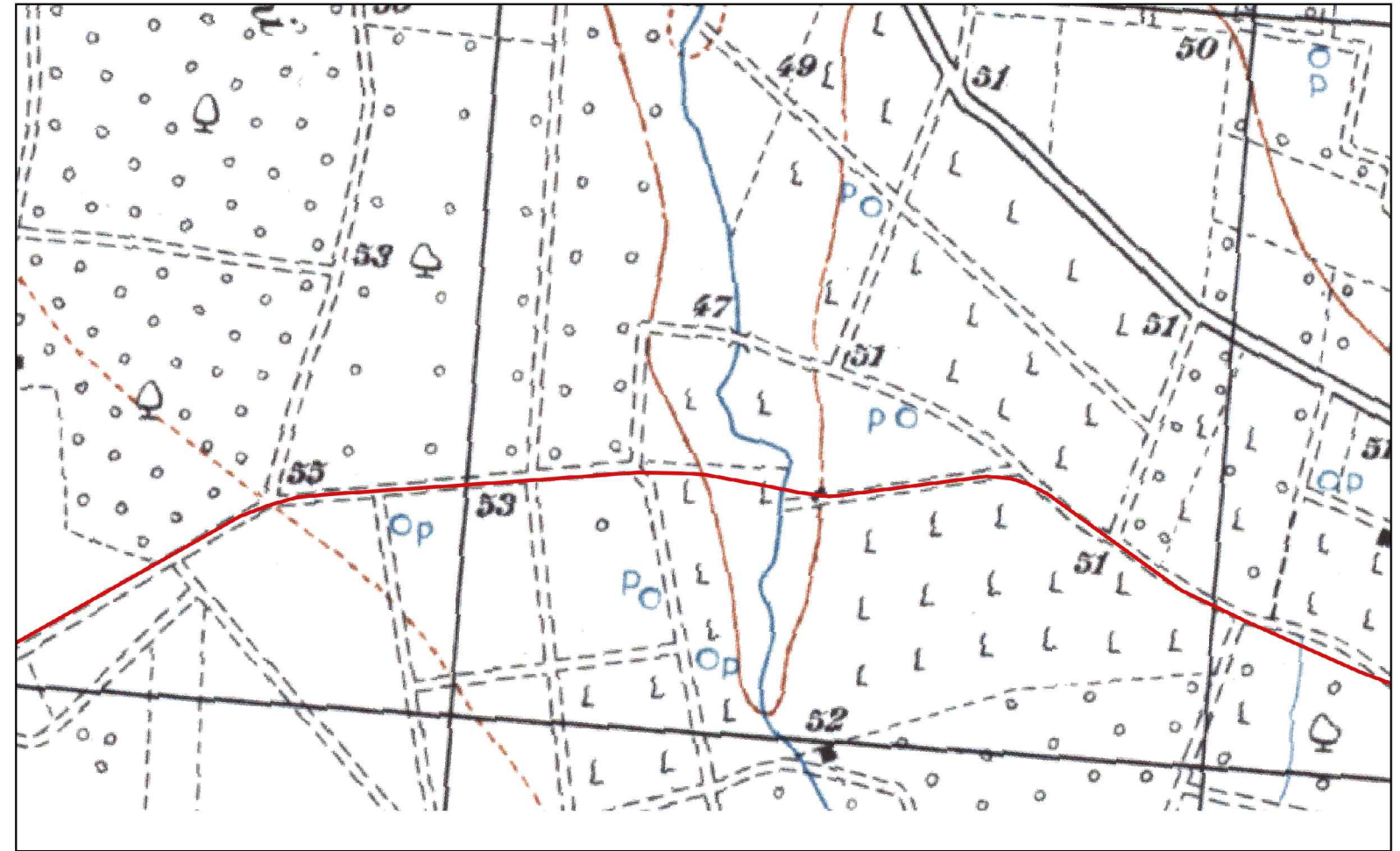
CATASTALE SCALA 1:200



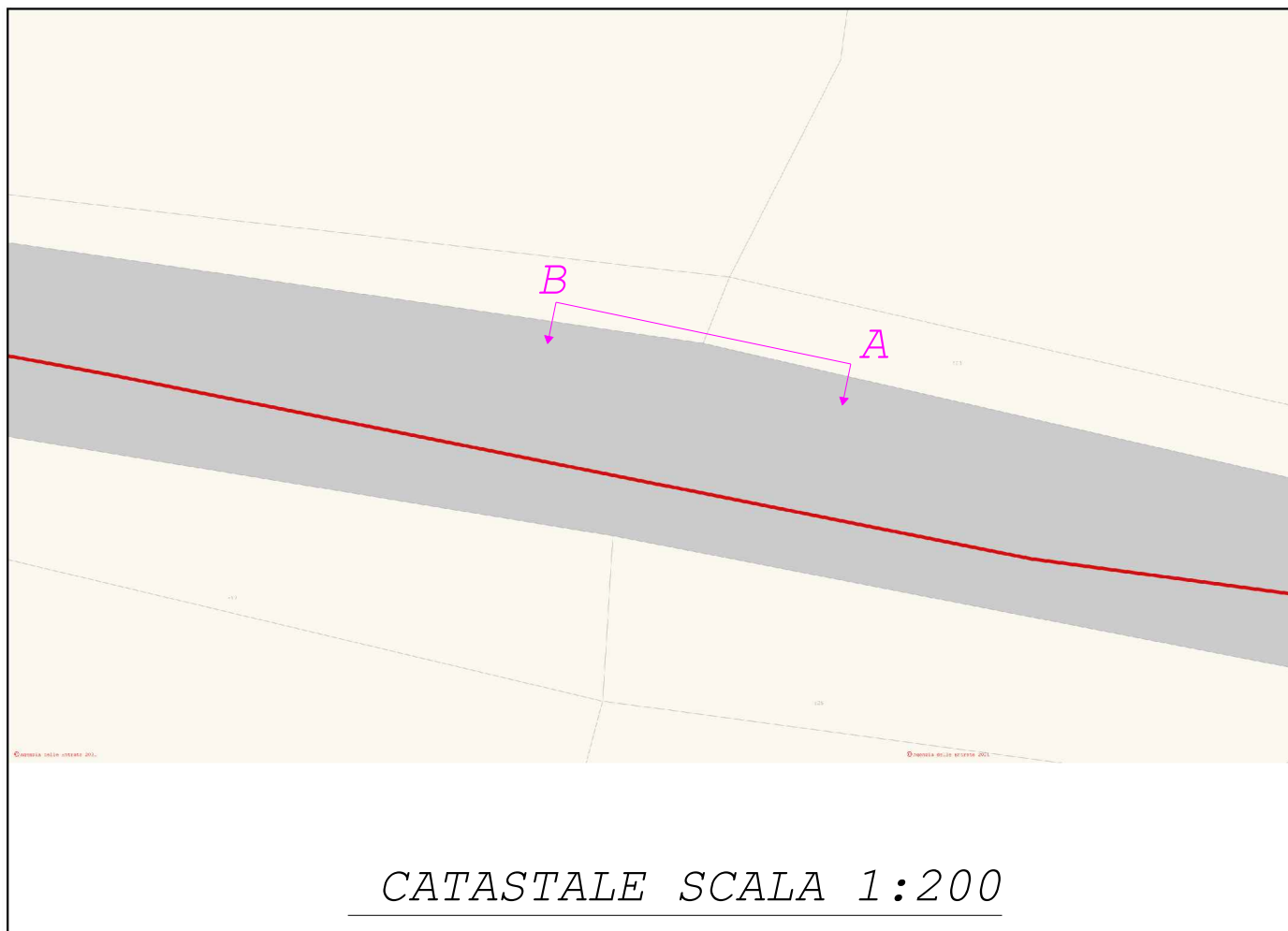
PASSAGGIO CANALE



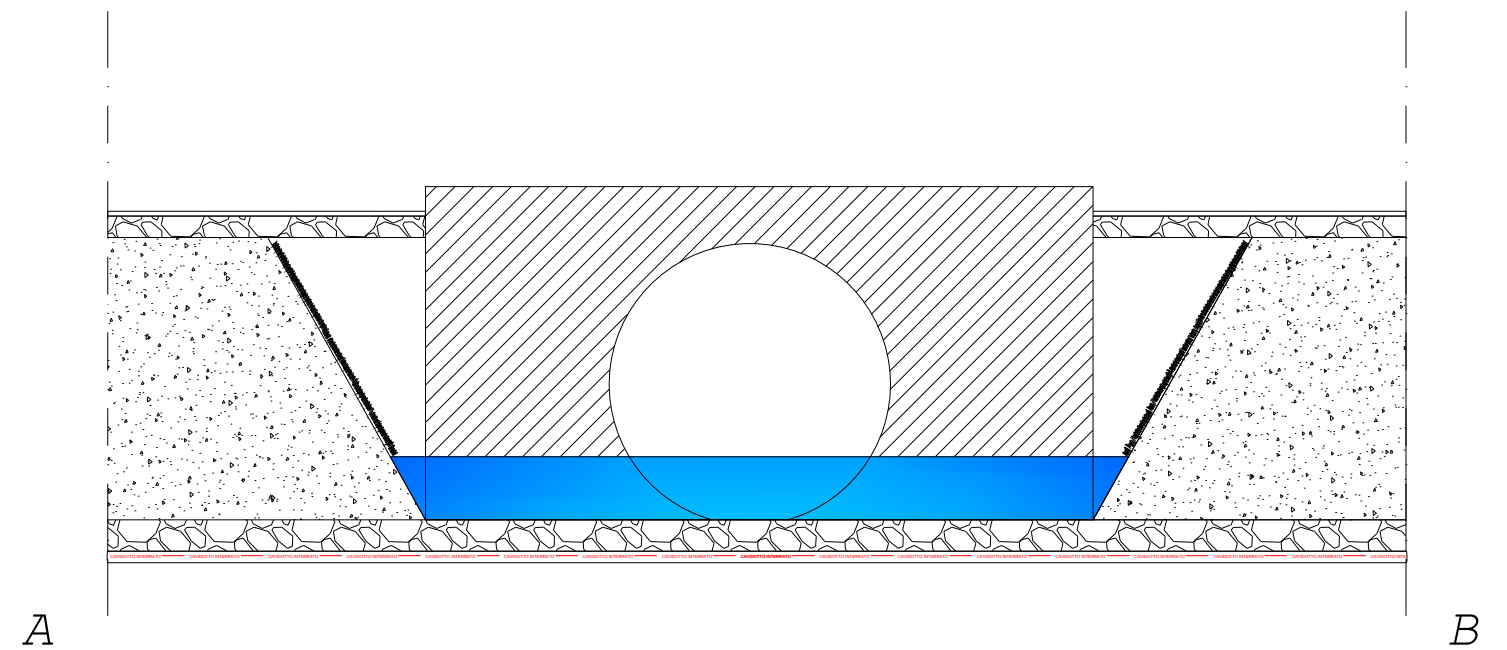
INQUADRAMENTO AREA SU AEROFOTO



IGM SCALA 1:5000



CATASTALE SCALA 1:200



PASSAGGIO CANALE