

COMMITTENTE



GRV WIND SARDEGNA 6 S.R.L.
Via Durini, 9 Tel. +39.02.50043159
20122 Milano PEC: grvwindsardegna6@legalmail.it



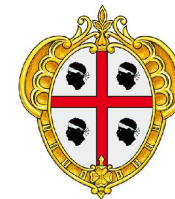
PROGETTISTI



INSE S.r.l.
Viale Michelangelo,71 Tel. 081.579.7998
80129 Napoli Mail: tecnico@inse srl

Amm. Francesco Di Maso
Ing. Nicola Galdiero
Ing. Pasquale Esposito

Collaboratori:
Geol. S.Trastu
Dott. F. Mascia
Dott. M. Medda
Ing. V. Triunfo
Arch. C. Gaudiero
Arch. C. Prisco
Ing. F. Quarto



REGIONE SARDEGNA



PROVINCIA SASSARI



ITTIRI

PROGETTO

PROGETTO DEFINITIVO PER LA REALIZZAZIONE DI UN PARCO EOLICO DENOMINATO "LUXI" COMPOSTO DA 5 AEROGENERATORI DA 7.2 MW, PER UNA POTENZA COMPLESSIVA DI 36 MW SITO NEL COMUNE DI ITTIRI (SS), CON OPERE DI CONNESSIONE NEL COMUNE DI ITTIRI (SS)

ELABORATO

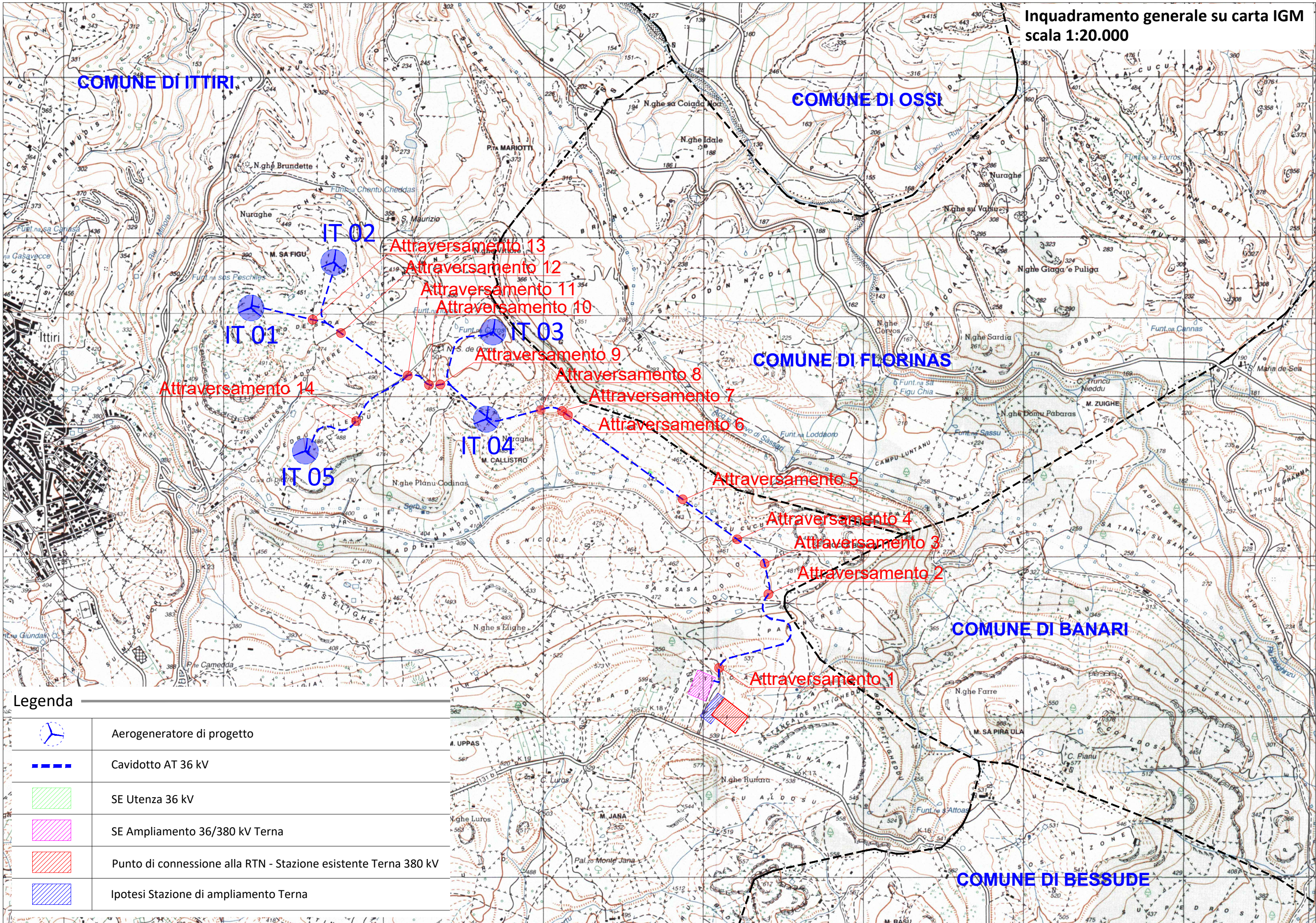
Titolo:
SCHEDE DELLE INTERFERENZE CAVIDOTTO CON RETICOLO IDROGRAFICO E SOTTOSERVIZI

Tav. / Doc:
OC 20





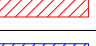

Codice elaborato:
HS266-OC20-D

Scala / Formato:
Varie / A3

01	APRILE 2023	PRIMA EMISSIONE	INSE Srl	INSE Srl	GRV WIND SARDEGNA 6 Srl
REV.	DATA	DESCRIZIONE	ELABORAZIONE	VERIFICA	APPROVAZIONE

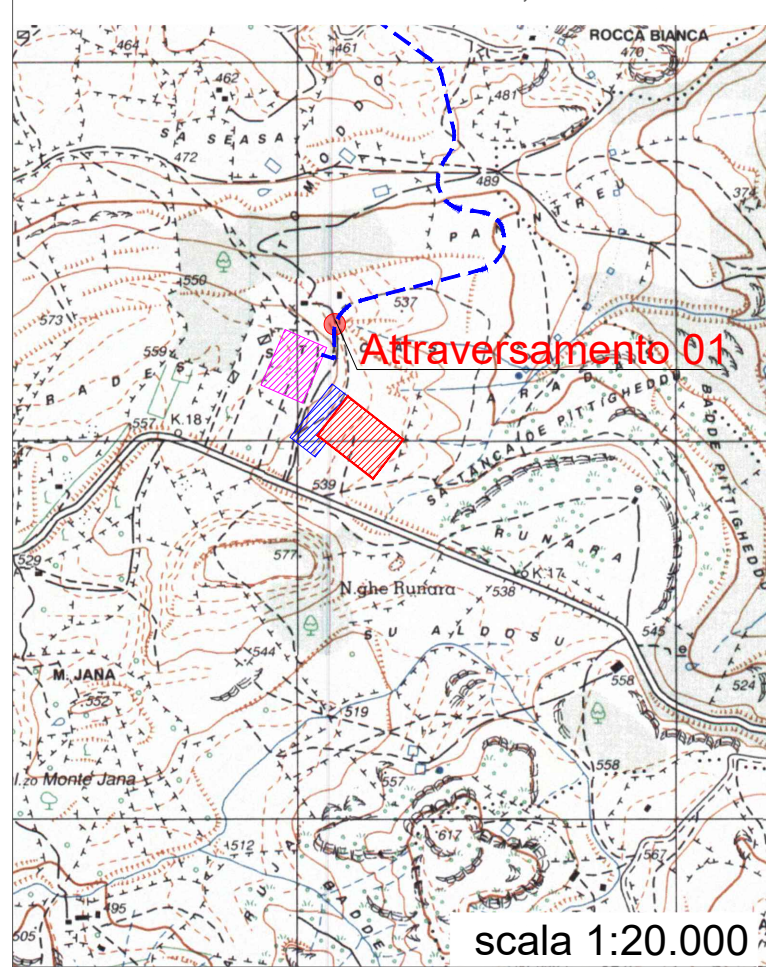


Legenda

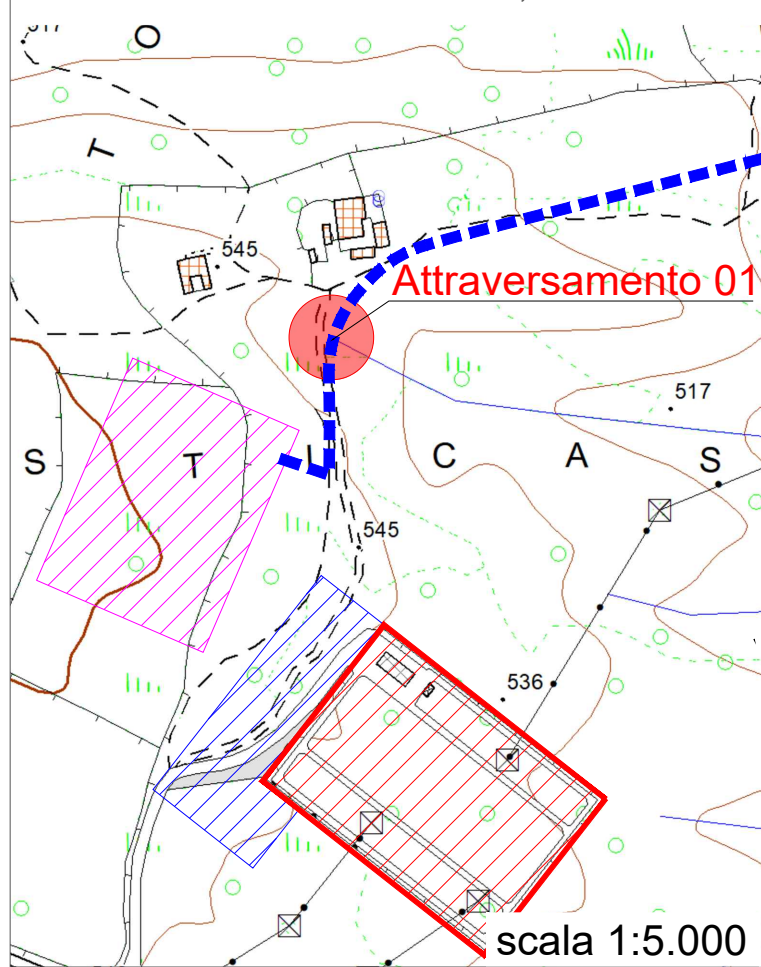
	Aerogeneratore di progetto
	Cavidotto AT 36 kV
	SE Utenza 36 kV
	SE Ampliamento 36/380 kV Terna
	Punto di connessione alla RTN - Stazione esistente Terna 380 kV
	Ipotesi Stazione di ampliamento Terna

ATTRAVERSAMENTO 01

Inquadramento su IGM
WGS84 UTM-32N: 468019.94E ; 4492123.58N



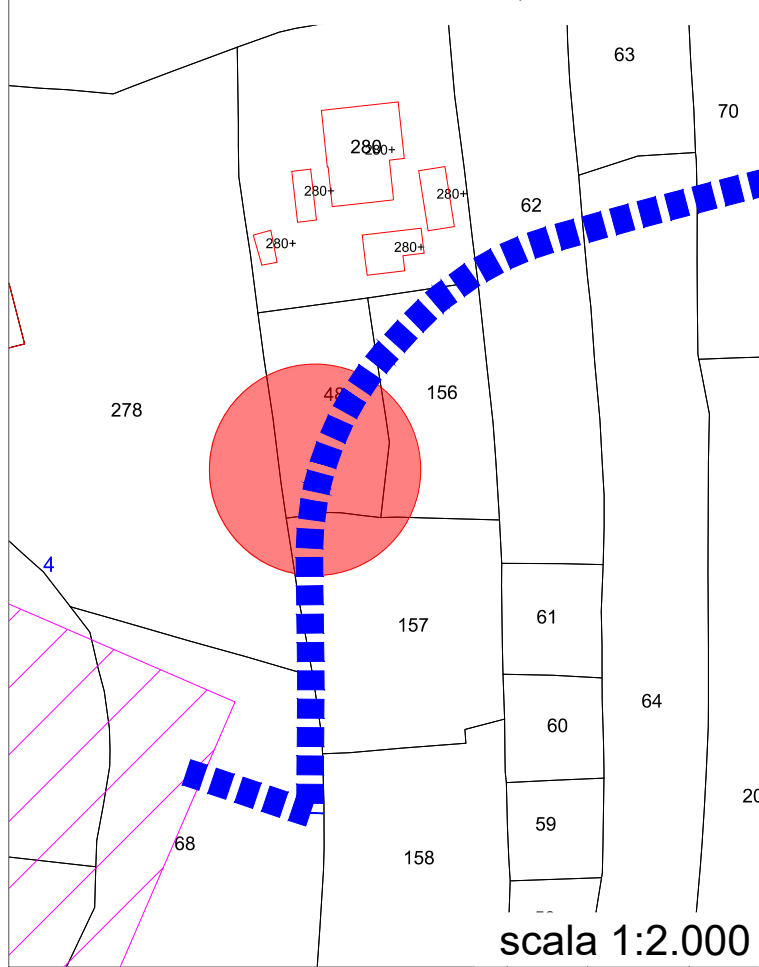
Inquadramento su CTR
WGS84 UTM-32N: 468019.94E ; 4492123.58N



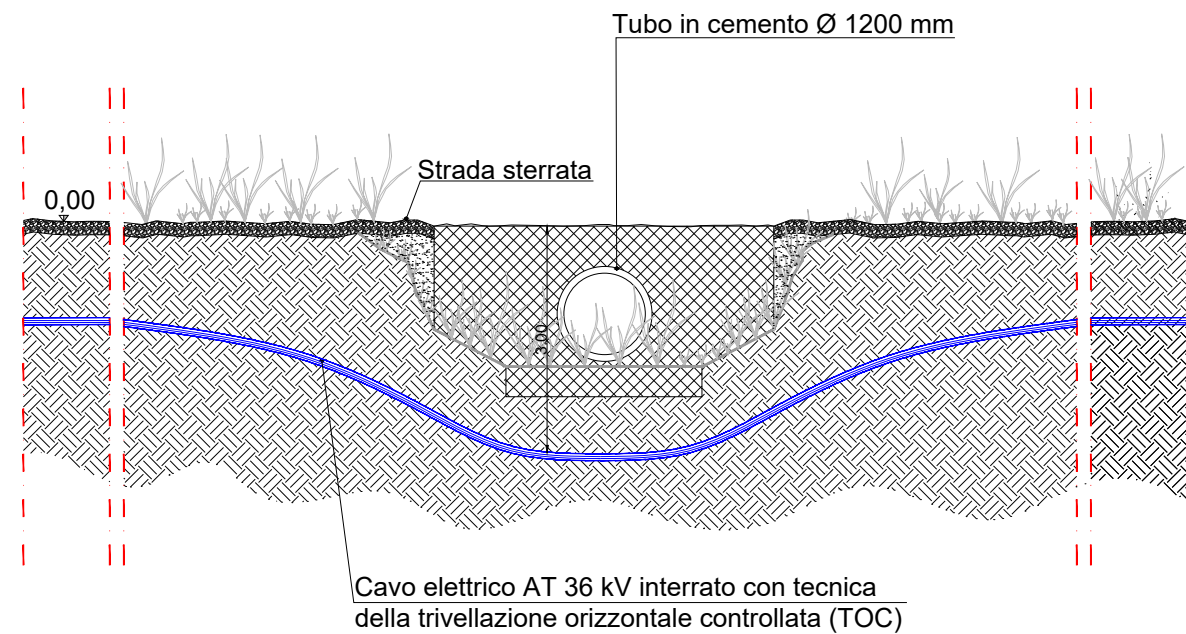
Inquadramento su Ortofoto
WGS84 UTM-32N: 468019.94E ; 4492123.58N



Inquadramento su stralcio Catastale
WGS84 UTM-32N: 468019.94E ; 4492123.58N

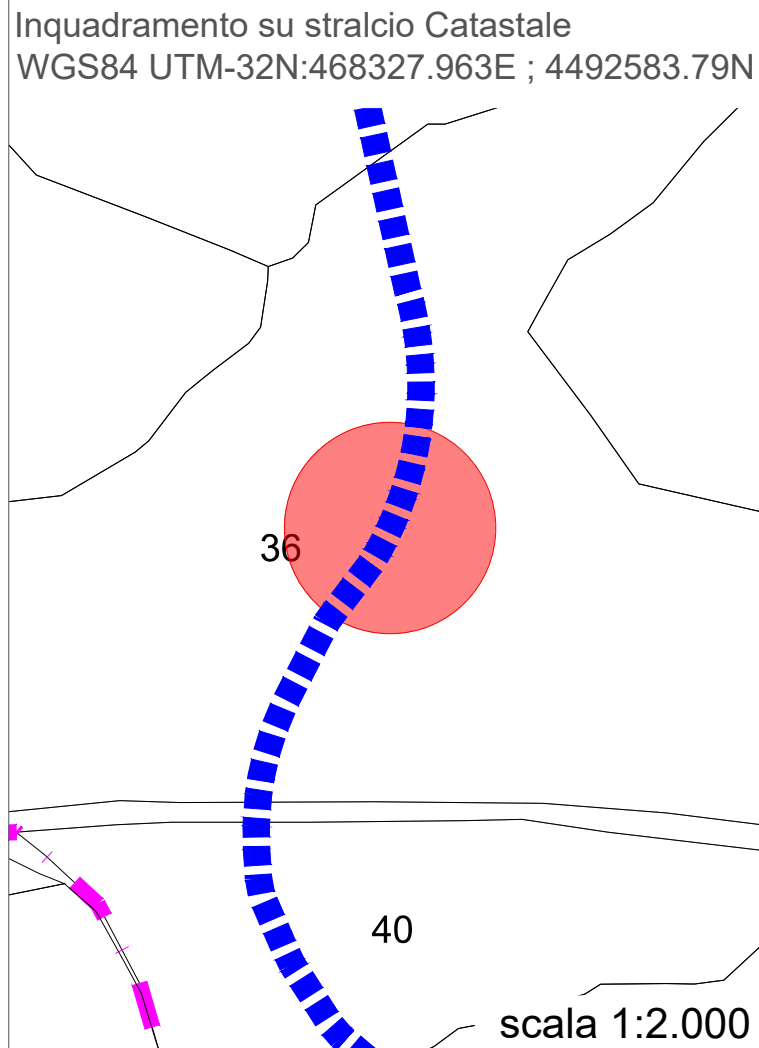
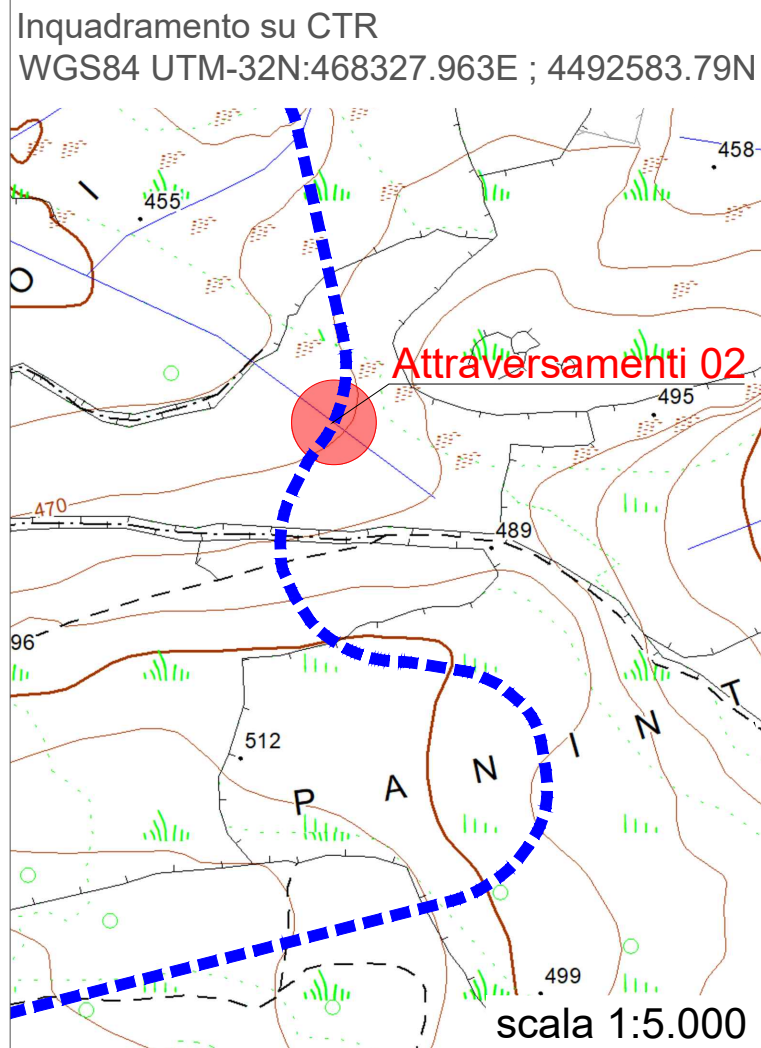
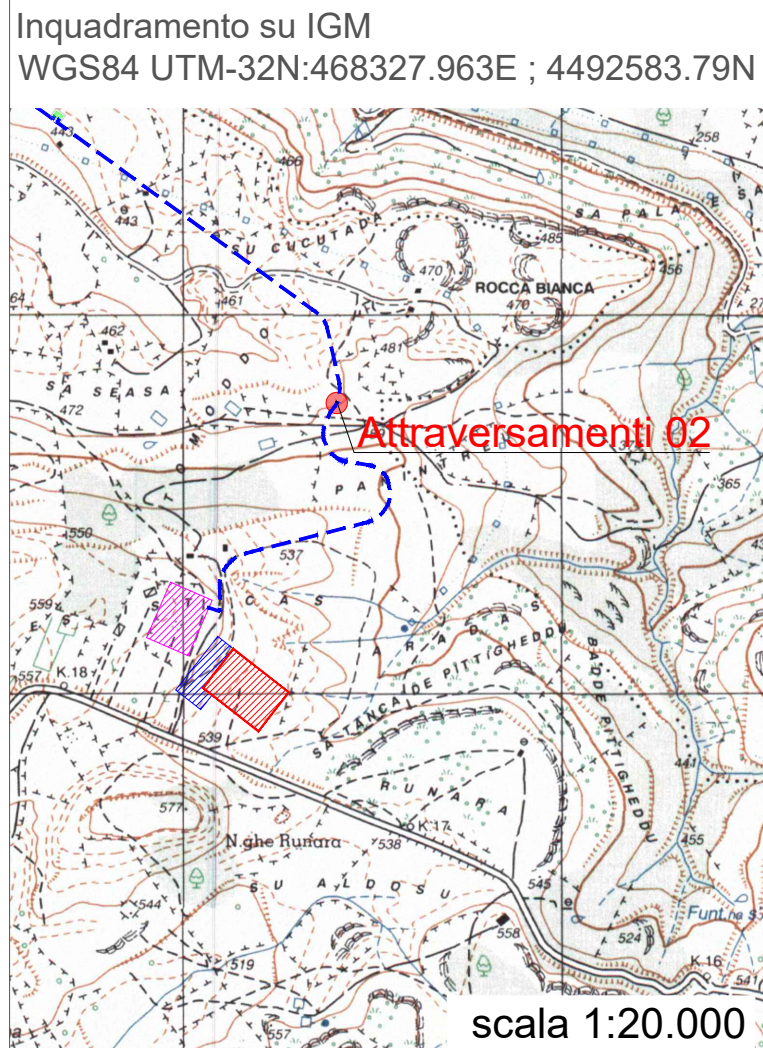


Tipici attraversamenti su canali e marane - Sezione Longitudinale

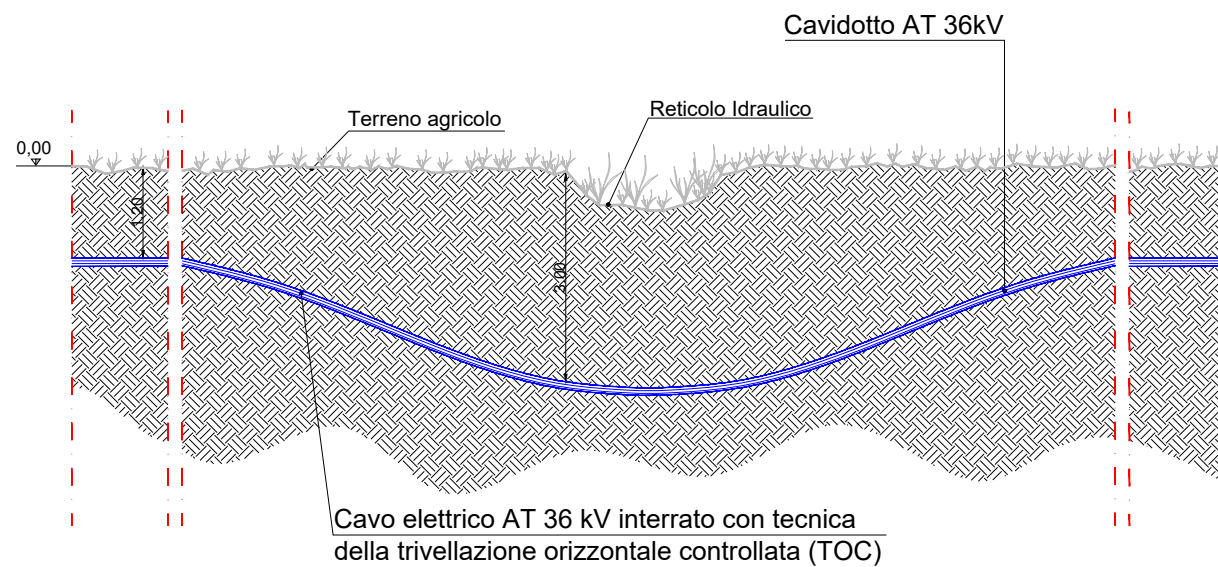


scala 1:100

ATTRAVERSAMENTO 02

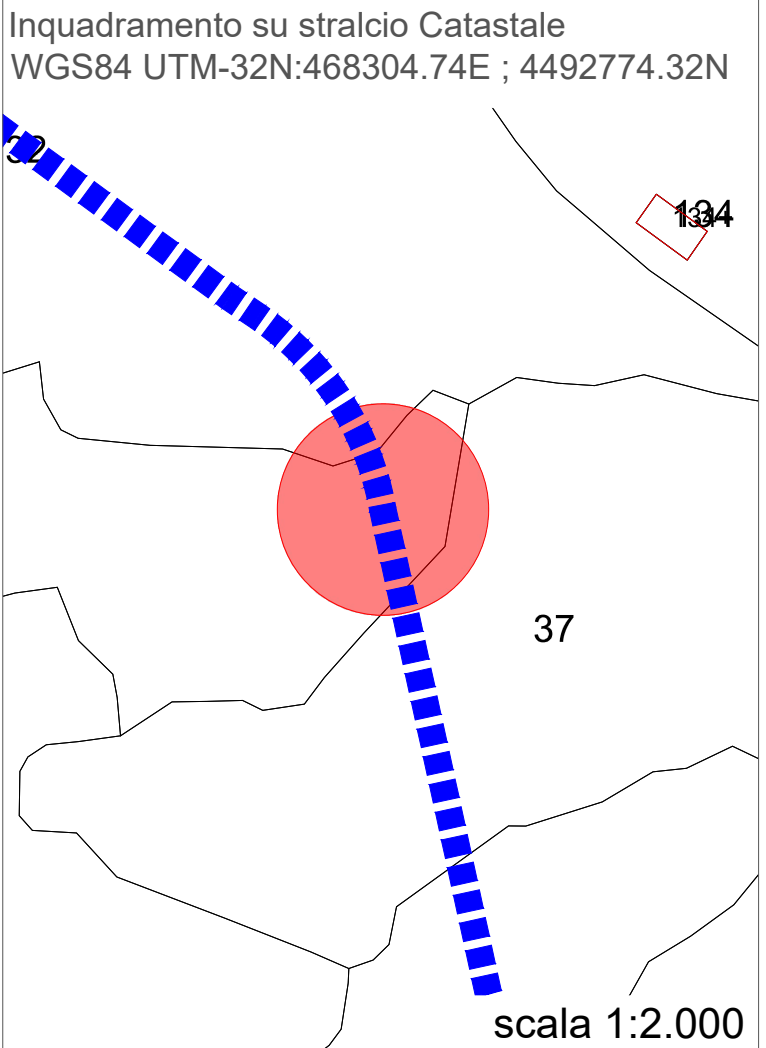
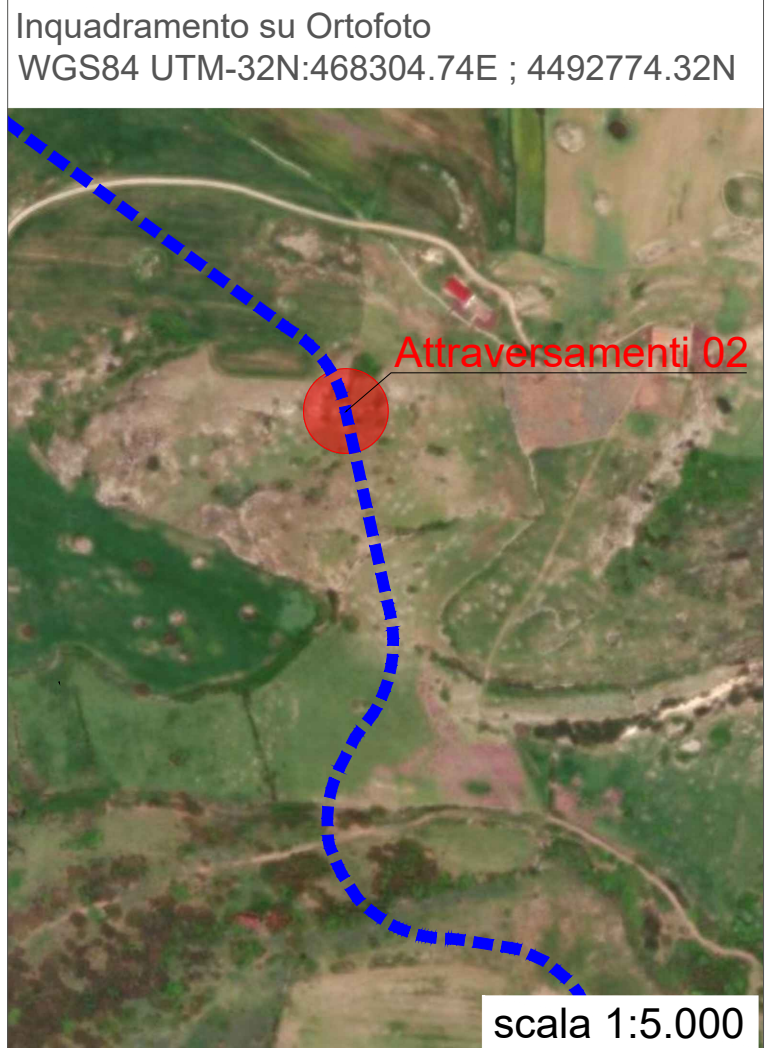
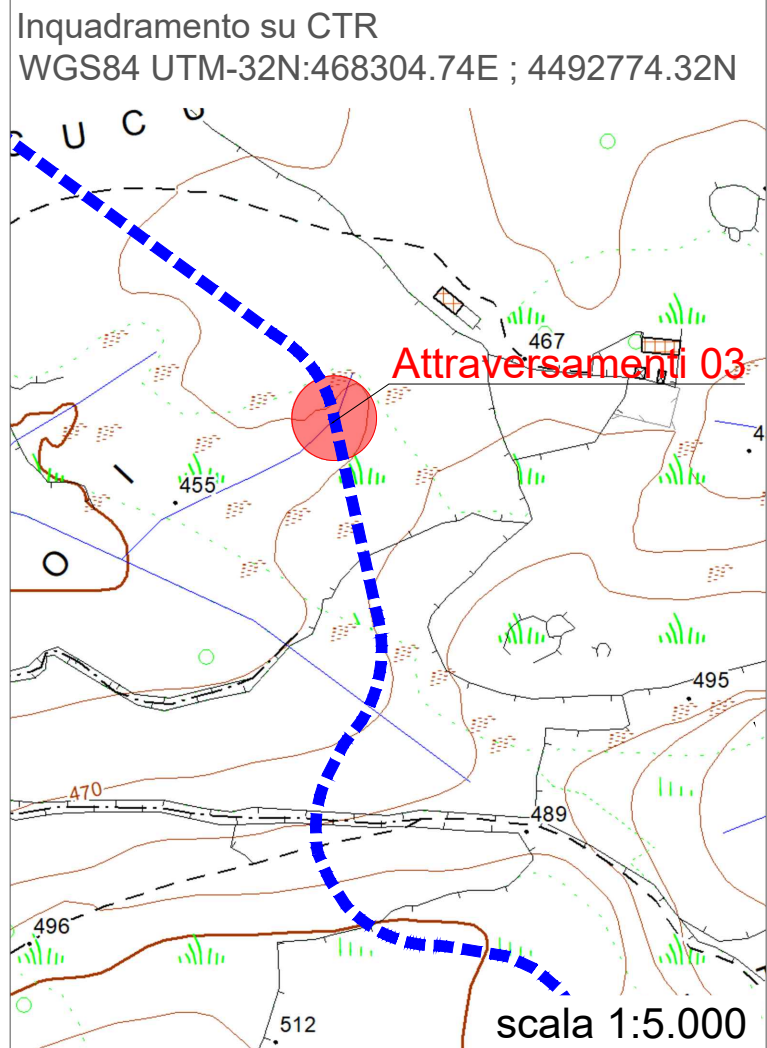
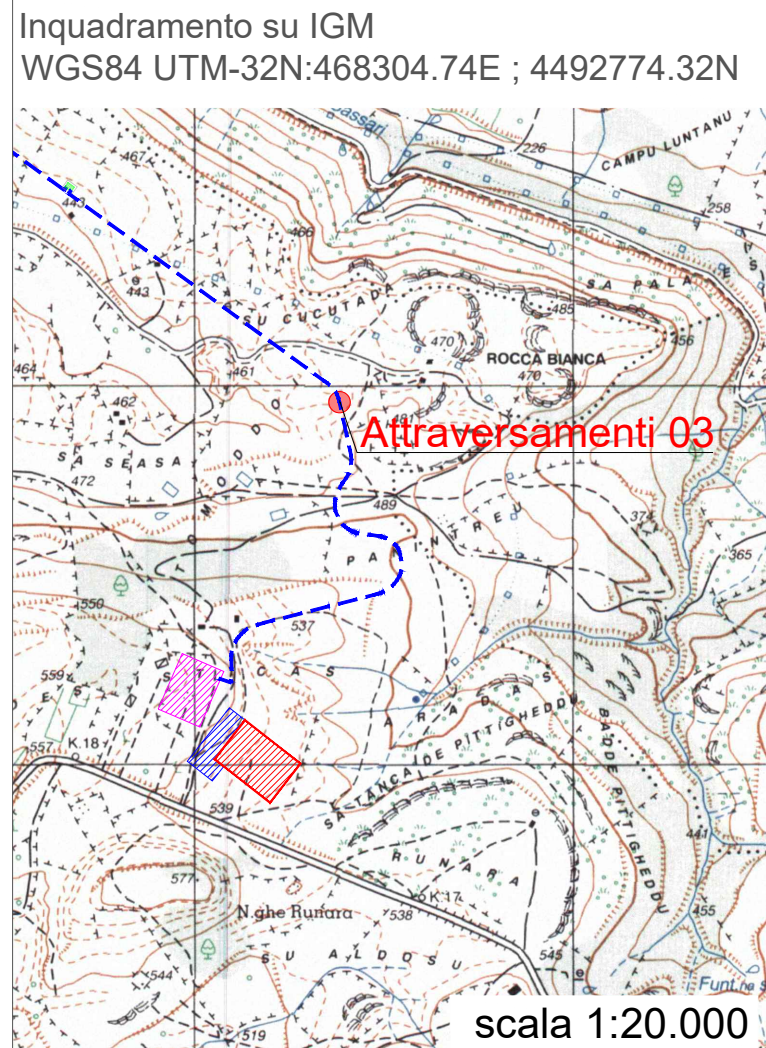


Tipici attraversamenti su canali e marane - Sezione Longitudinale

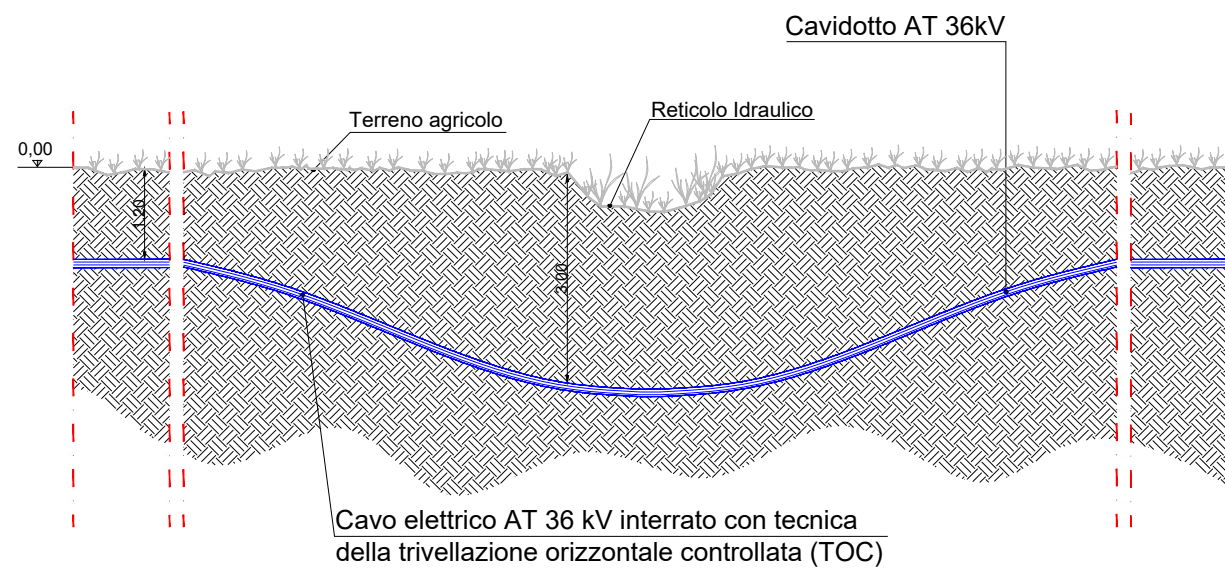


scala 1:100

ATTRAVERSAMENTO 03

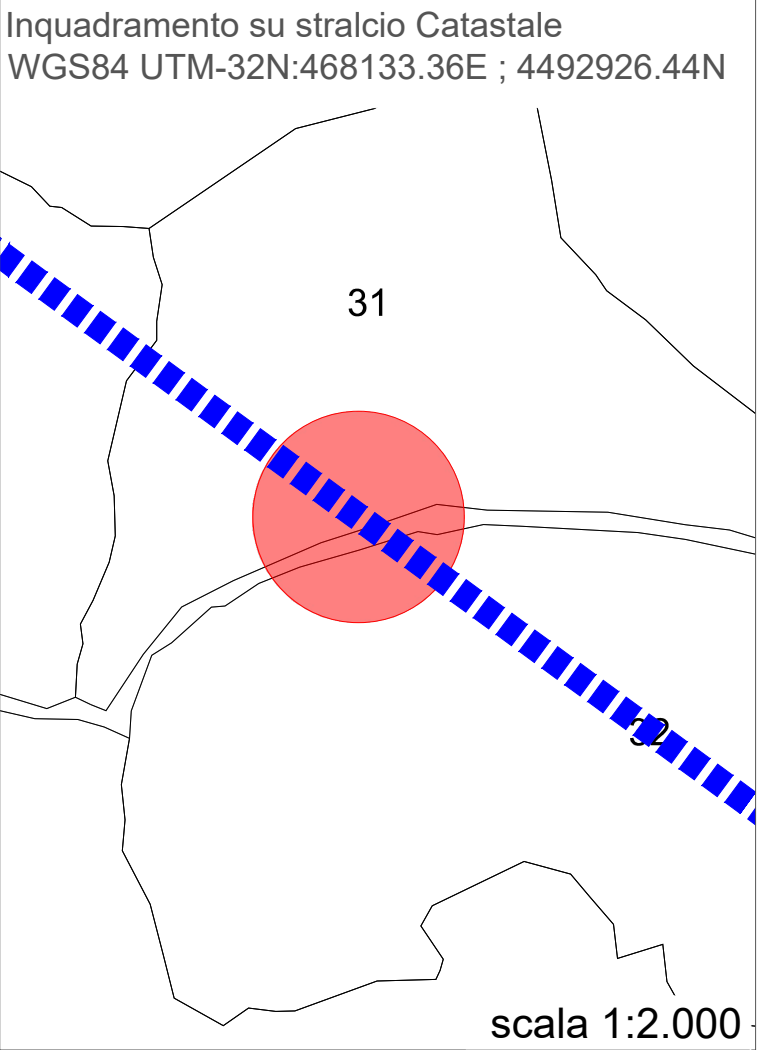
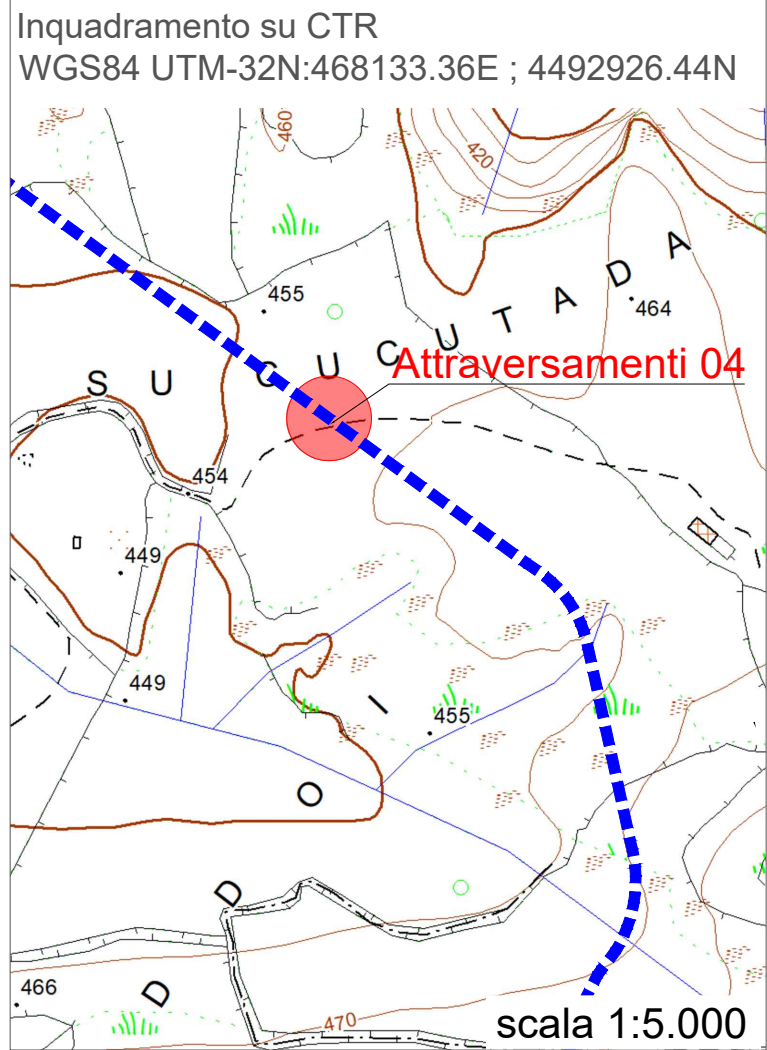
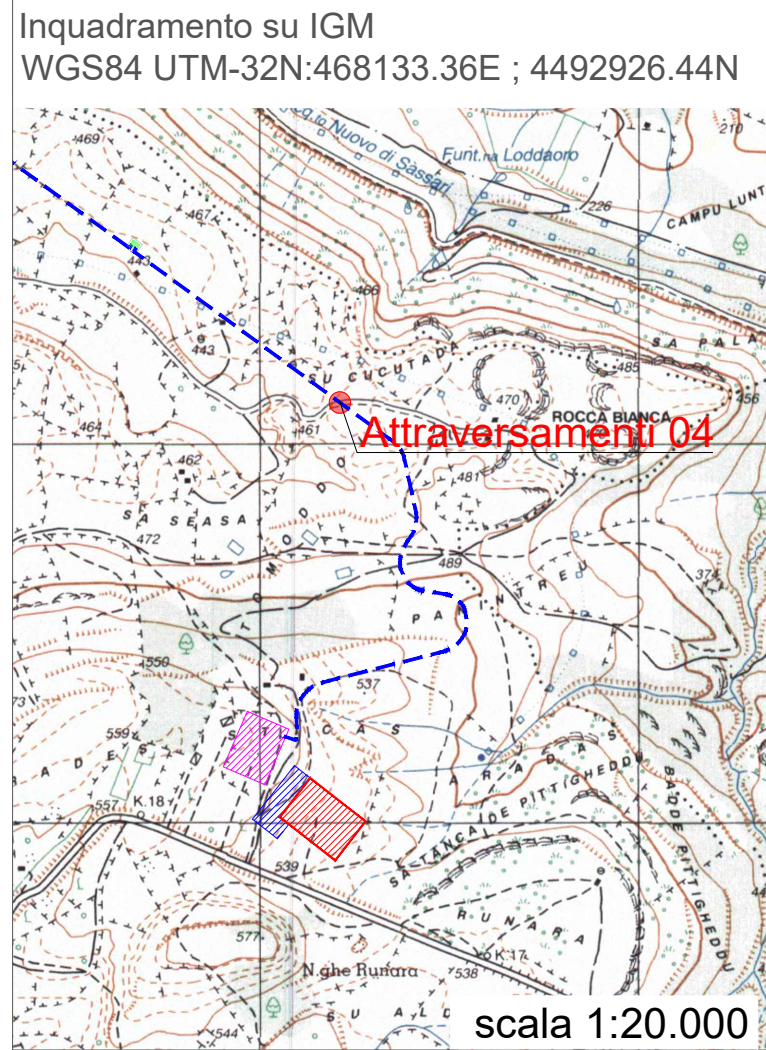


Tipici attraversamenti su canali e marane - Sezione Longitudinale

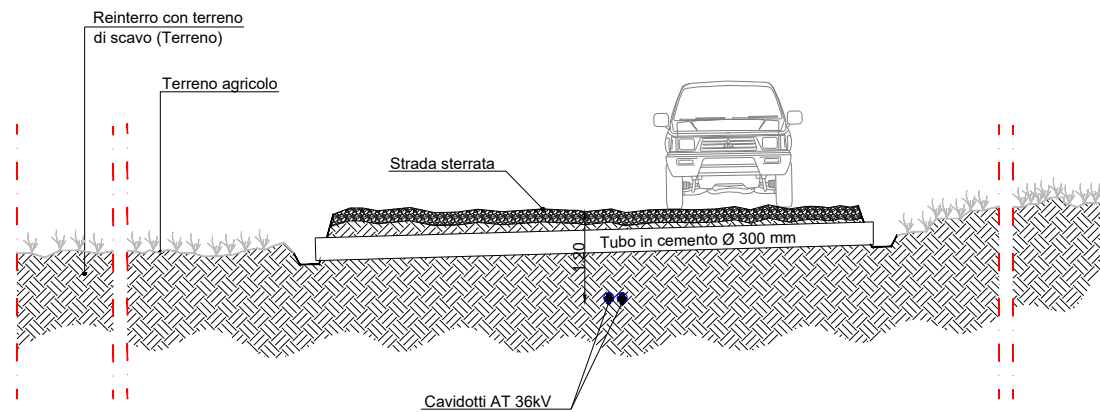


scala 1:100

ATTRAVERSAMENTO 04



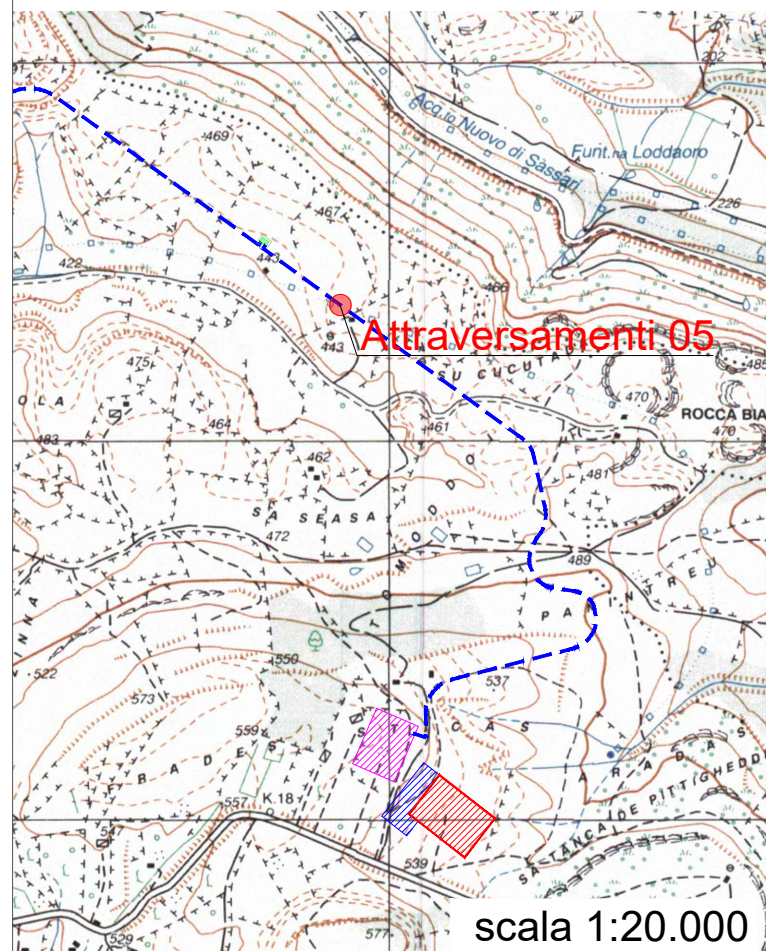
Tipici attraversamenti su strade bianche - Sezione Trasversale



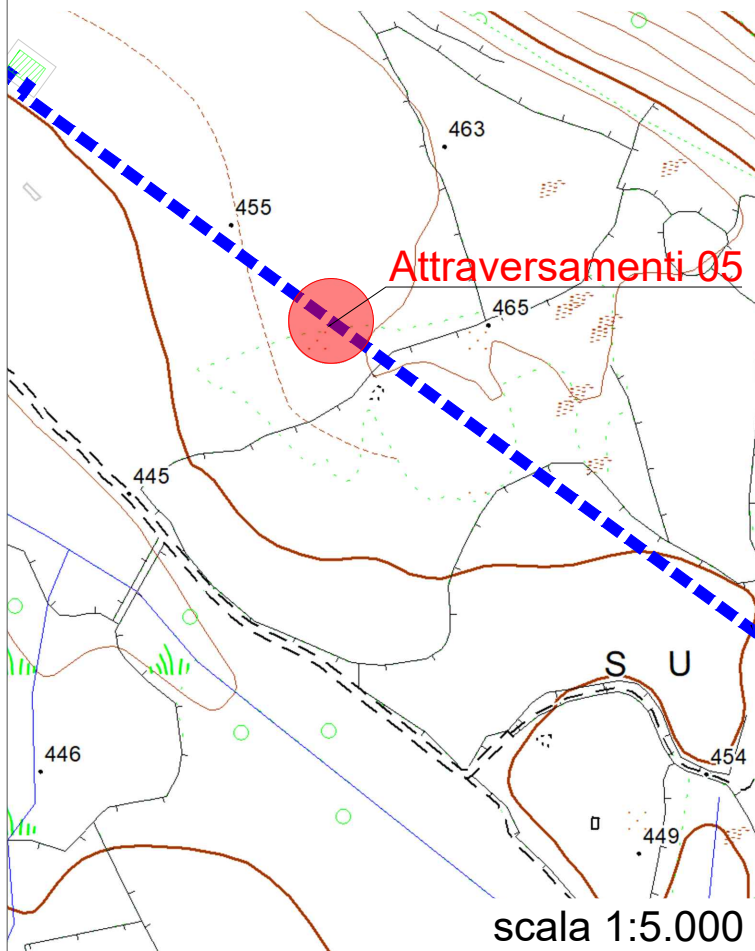
scala 1:100

ATTRAVERSAMENTO 05

Inquadramento su IGM
WGS84 UTM-32N:467792.67E ; 4493176.35N



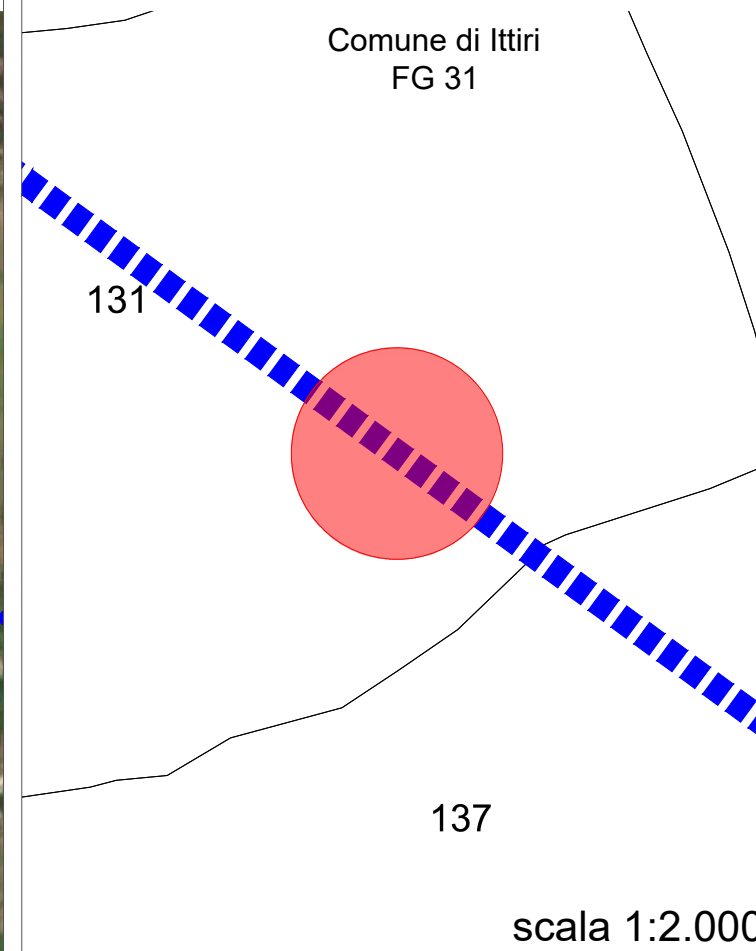
Inquadramento su CTR
WGS84 UTM-32N:467792.67E ; 4493176.35N



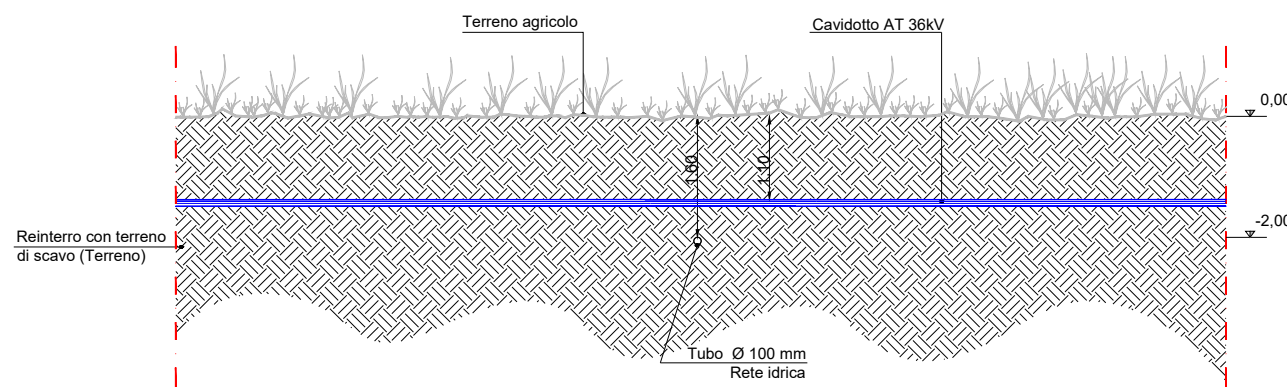
Inquadramento su Ortofoto
WGS84 UTM-32N:467792.67E ; 4493176.35N



Inquadramento su stralcio Catastale
WGS84 UTM-32N:467792.67E ; 4493176.35N



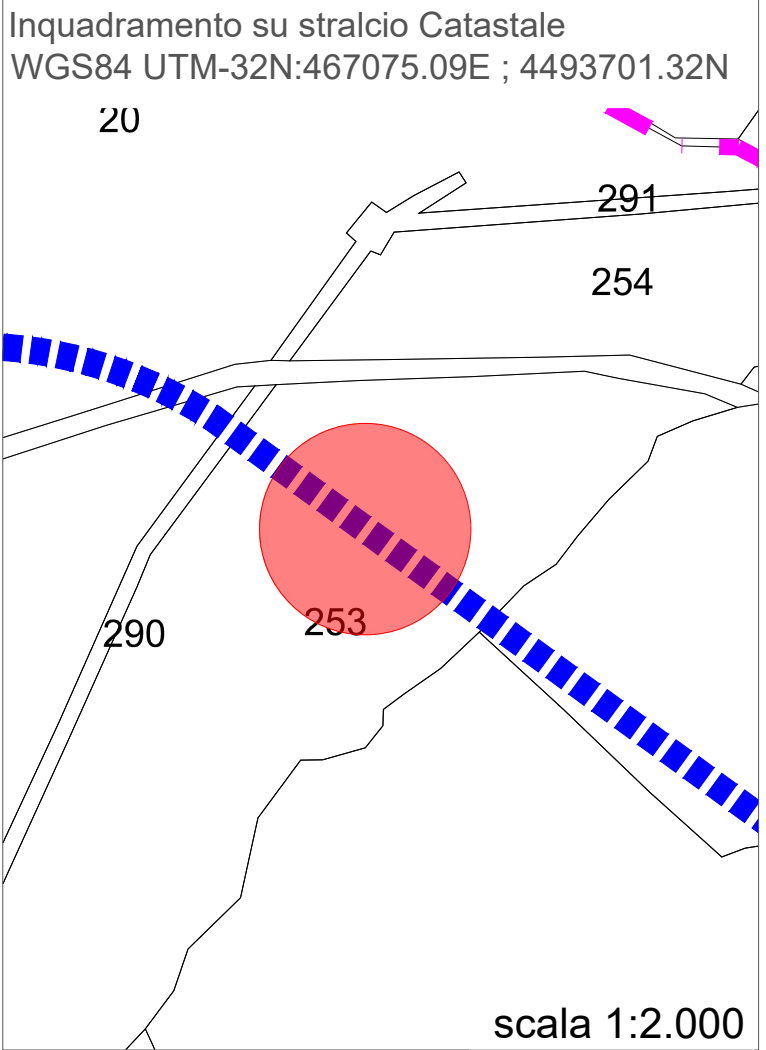
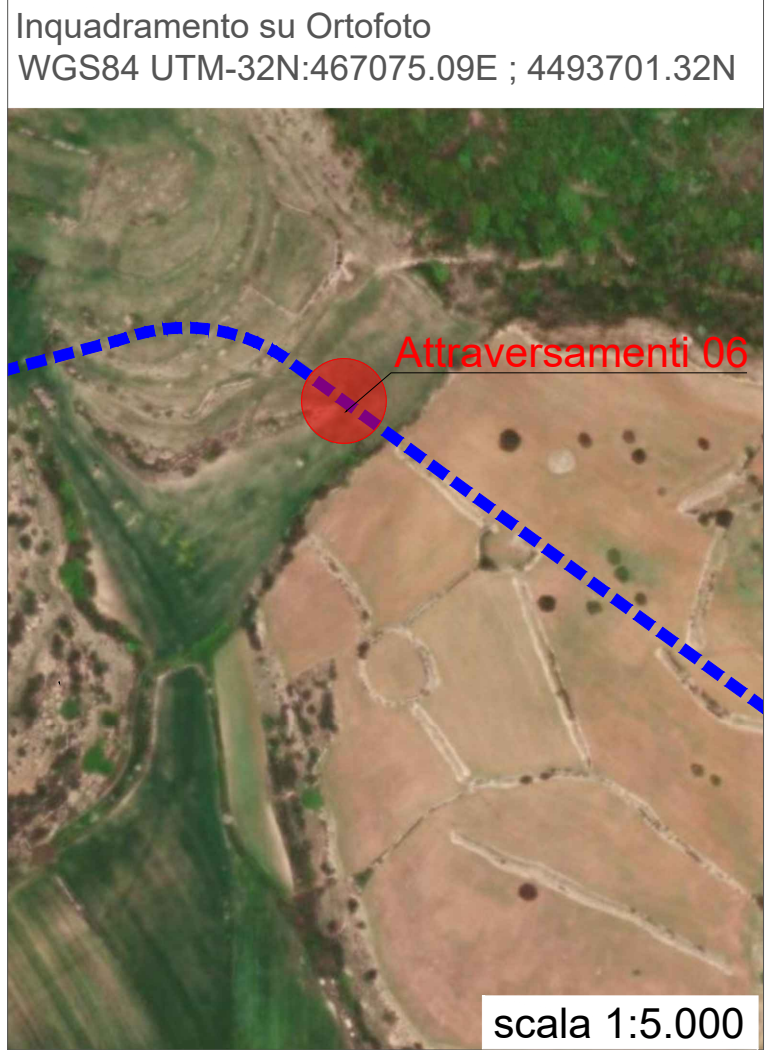
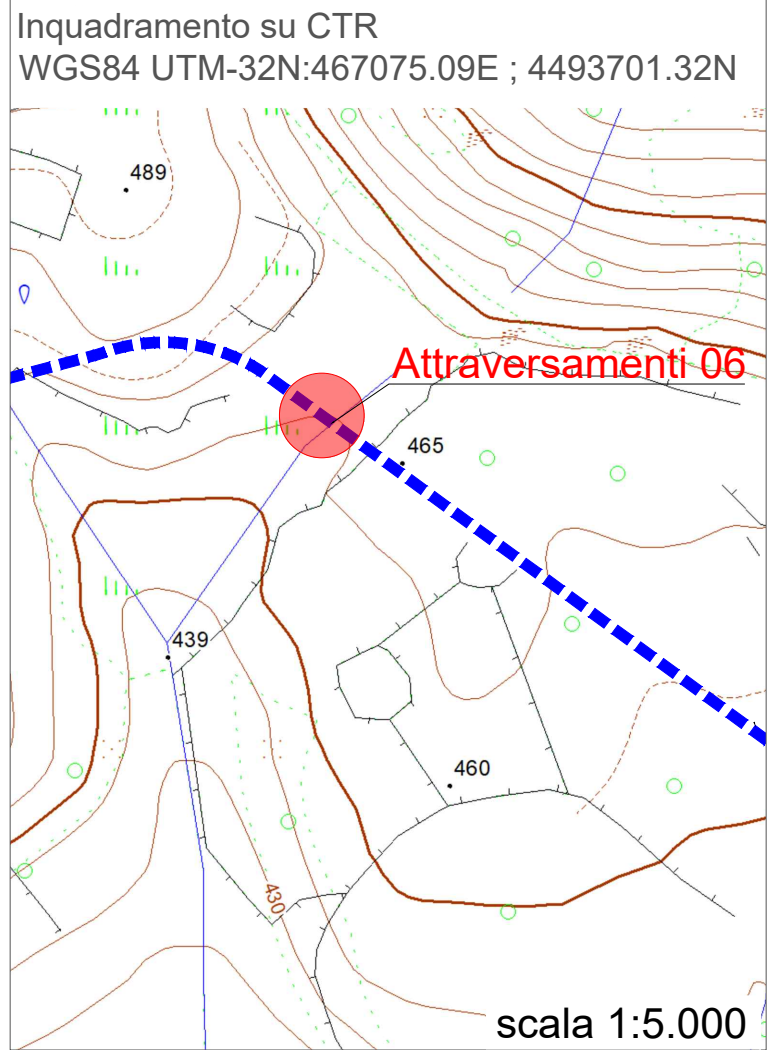
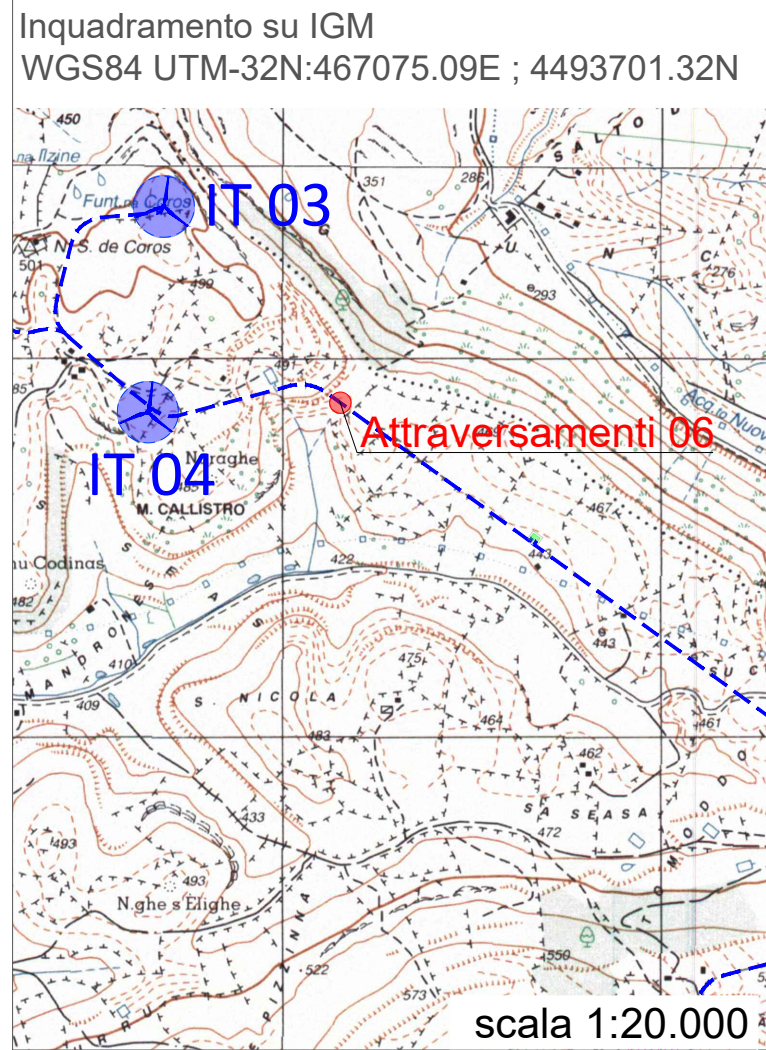
Tipici attraversamenti su reti idriche - Sezione Longitudinale



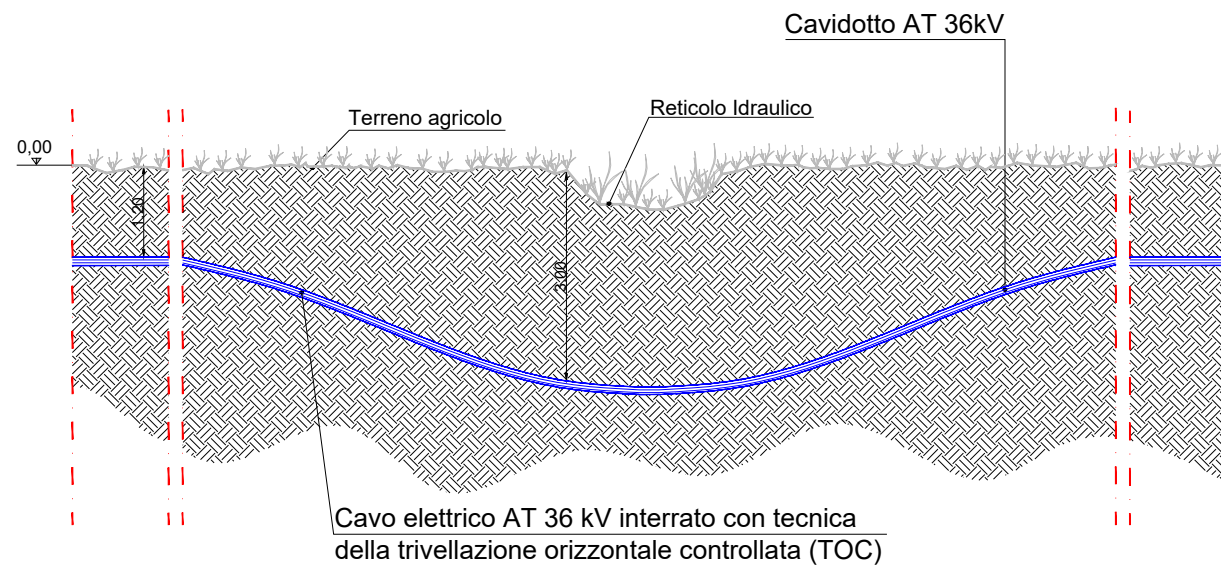
N.B. Il diametro della tubazione è indicativo, pertanto deve essere verificato in fase di progettazione esecutiva

scala 1:100

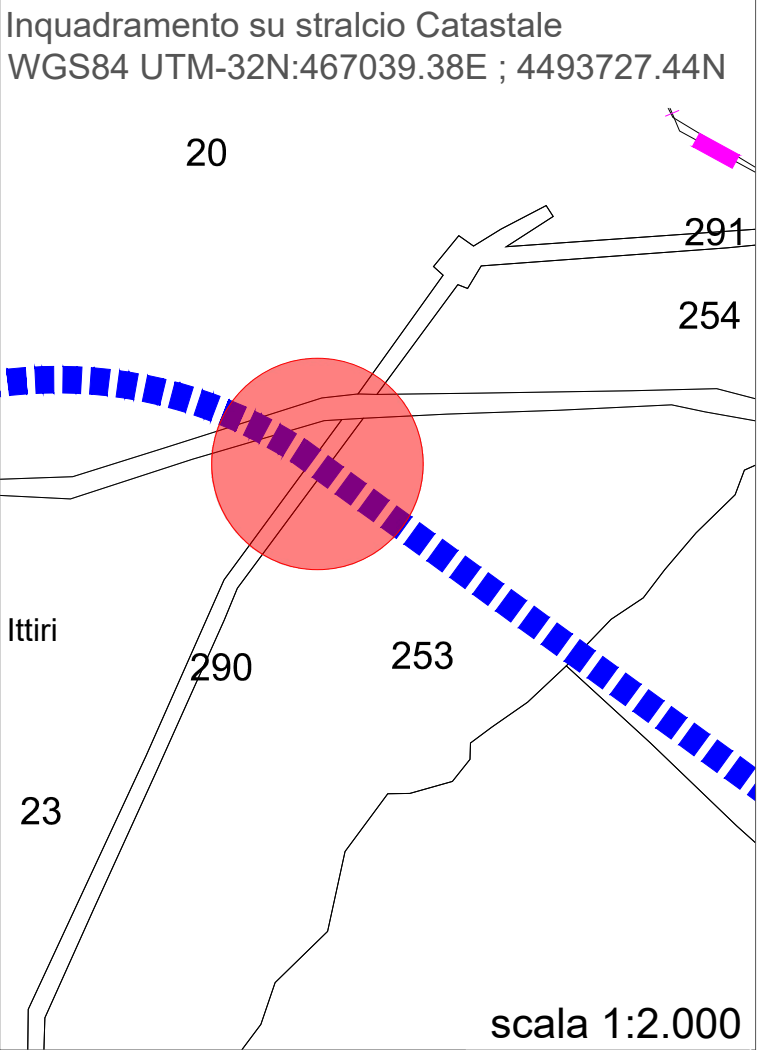
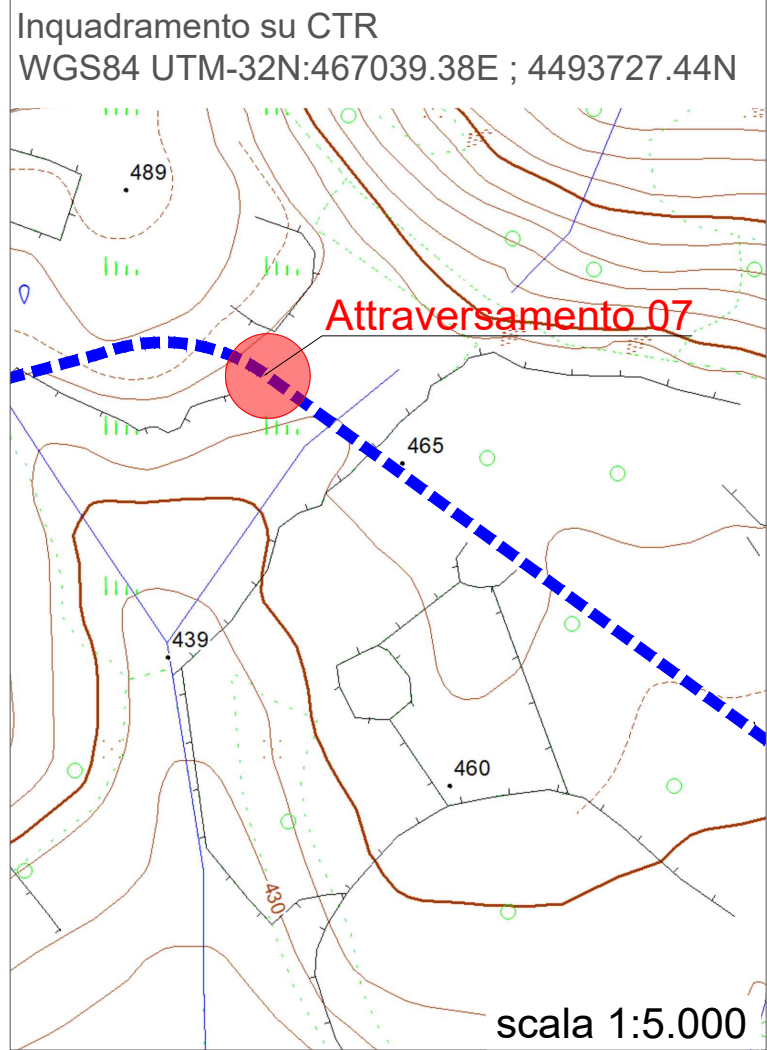
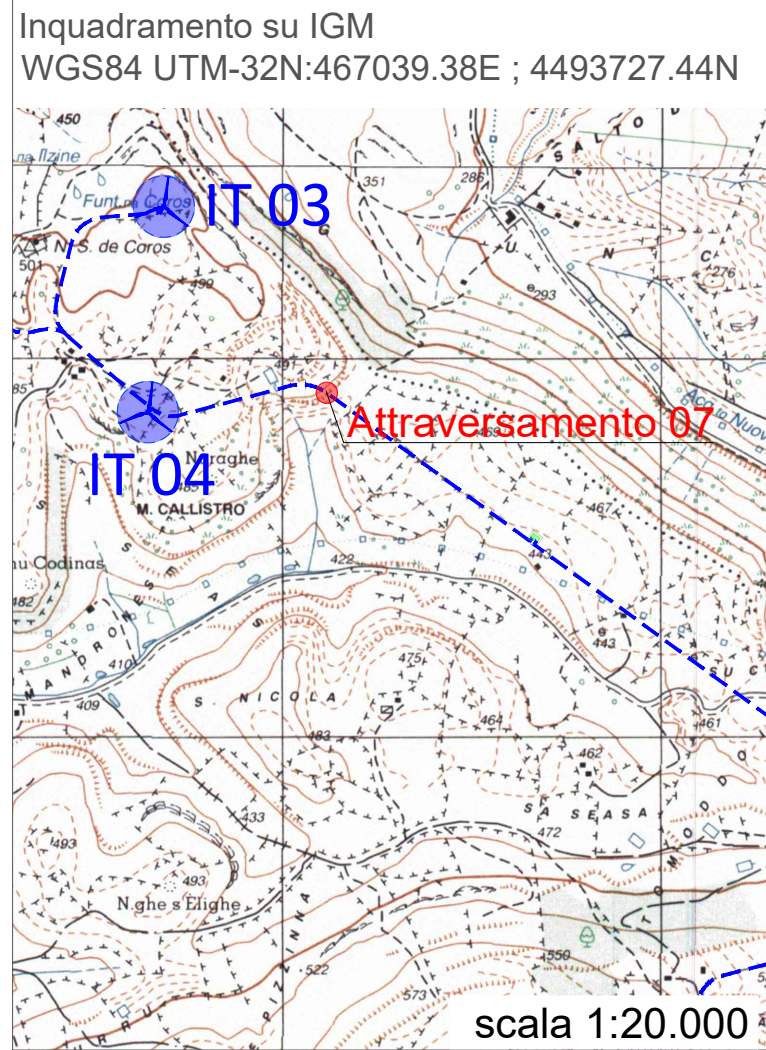
ATTRAVERSAMENTO 06



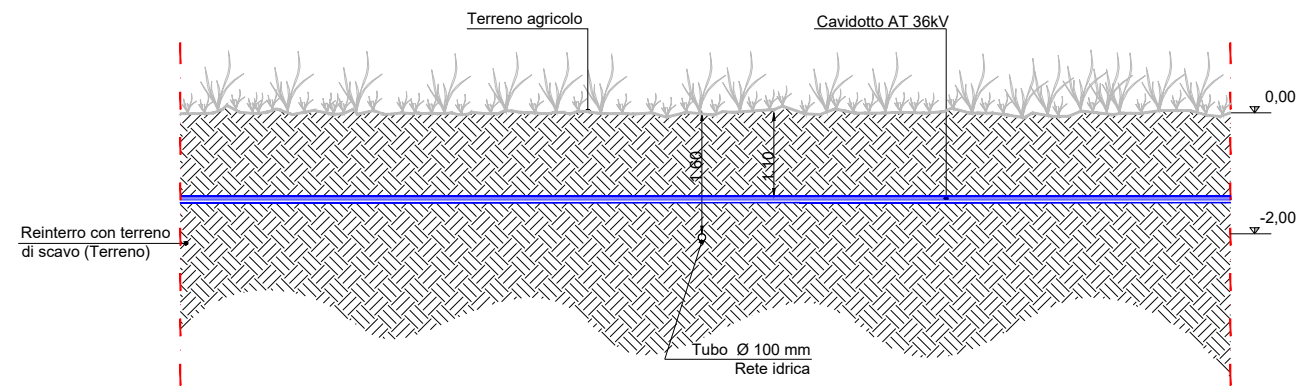
Tipici attraversamenti su canali e marane - Sezione Trasversale



ATTRAVERSAMENTO 07

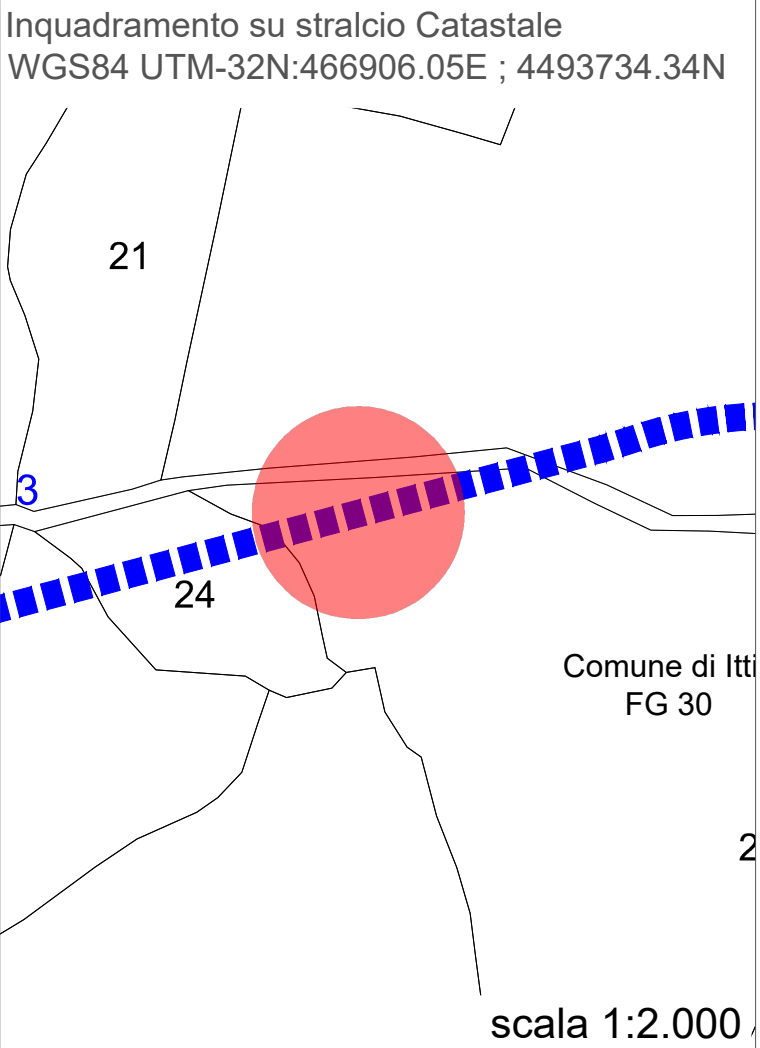
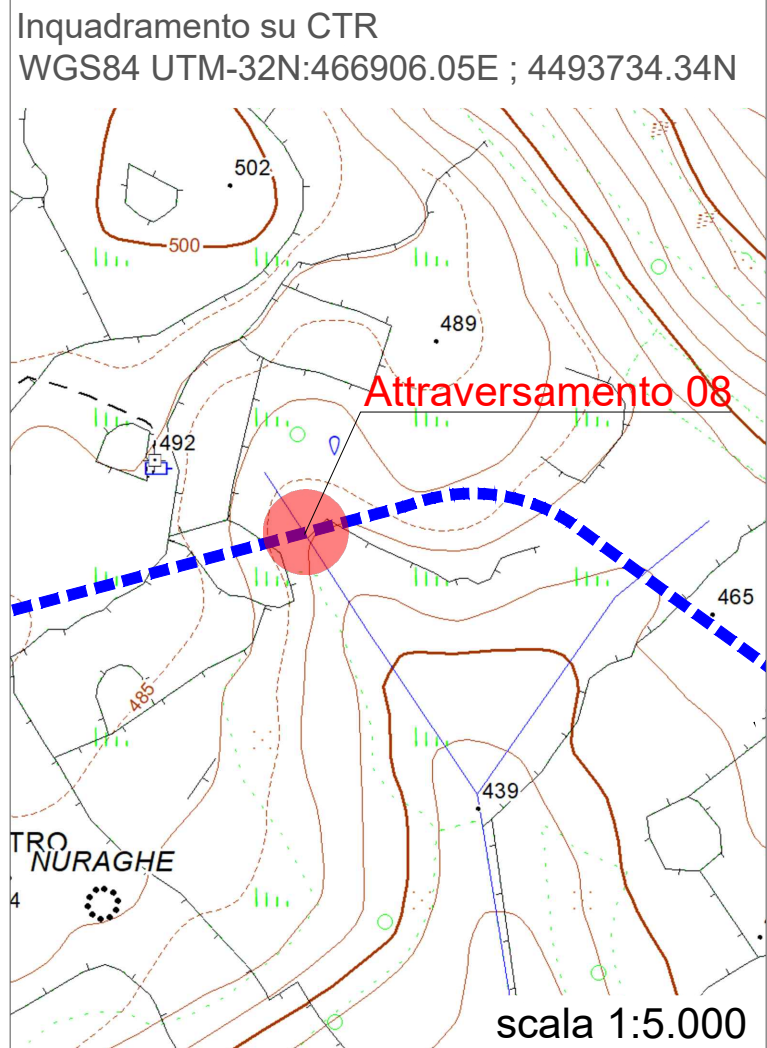
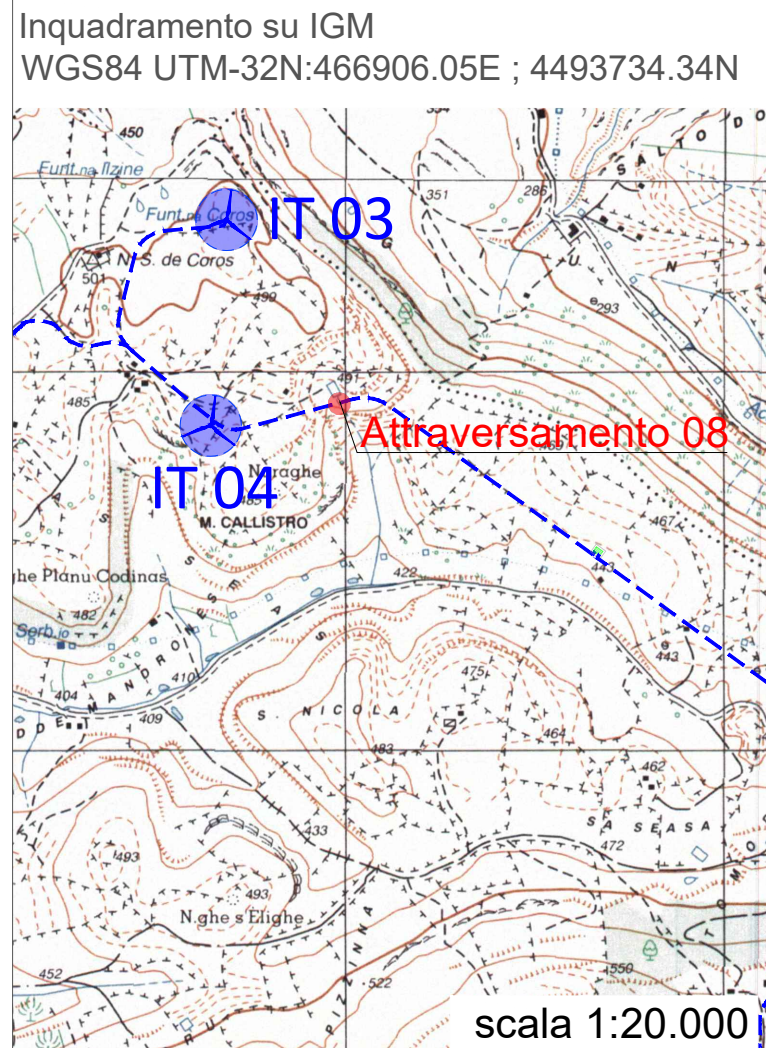


Tipici attraversamenti su canali e marane - Sezione Longitudinale

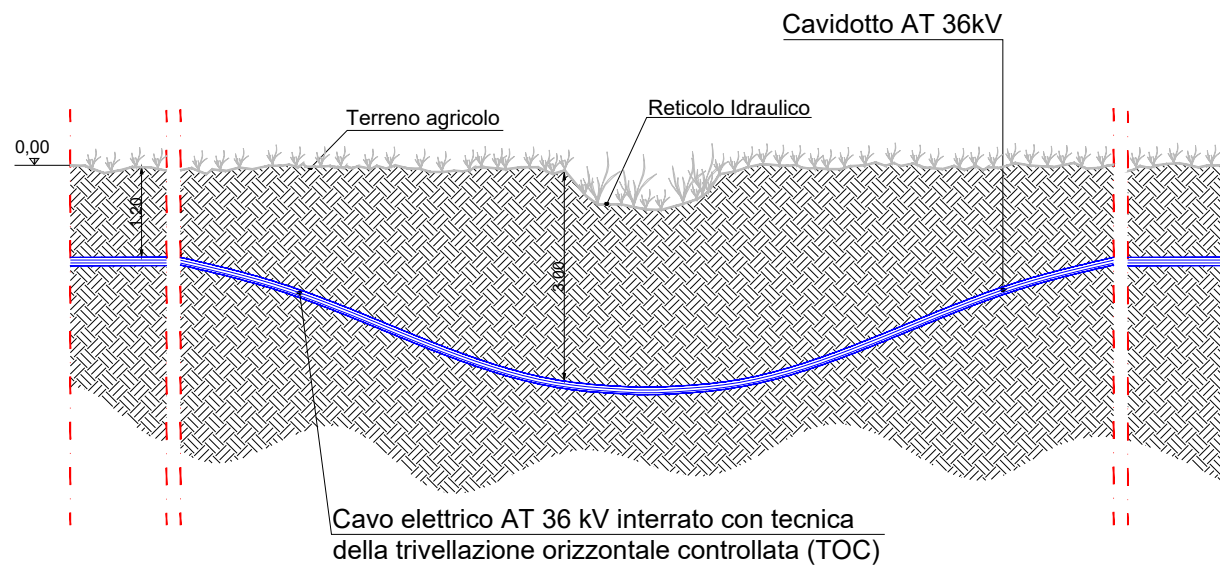


scala 1:100

ATTRAVERSAMENTO 08



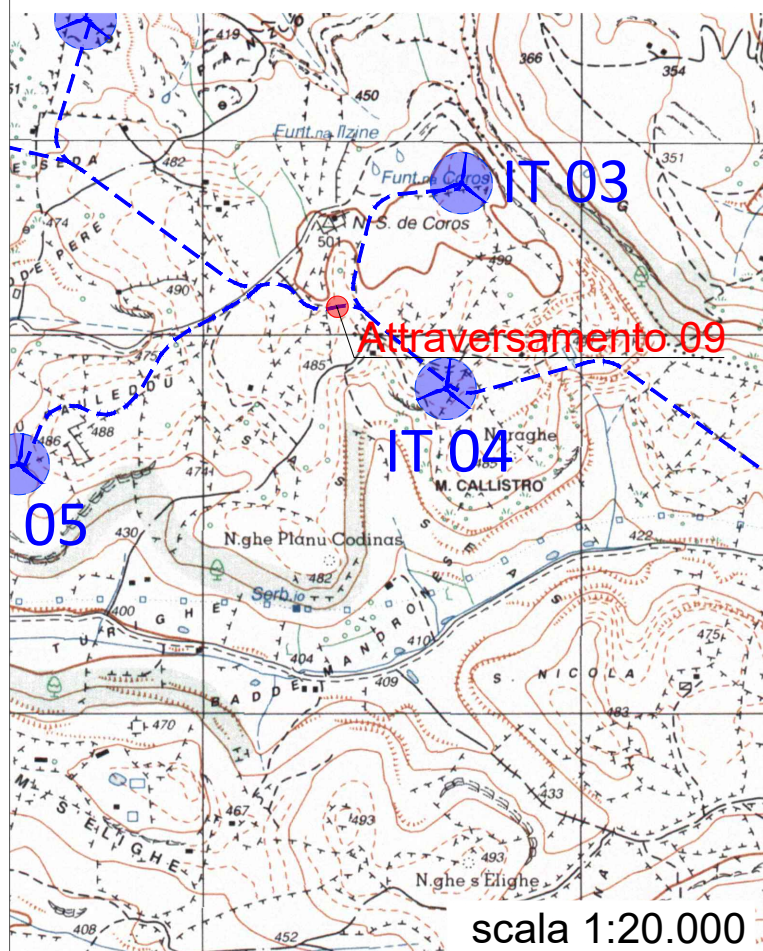
Tipici attraversamenti su canali e marane - Sezione Longitudinale



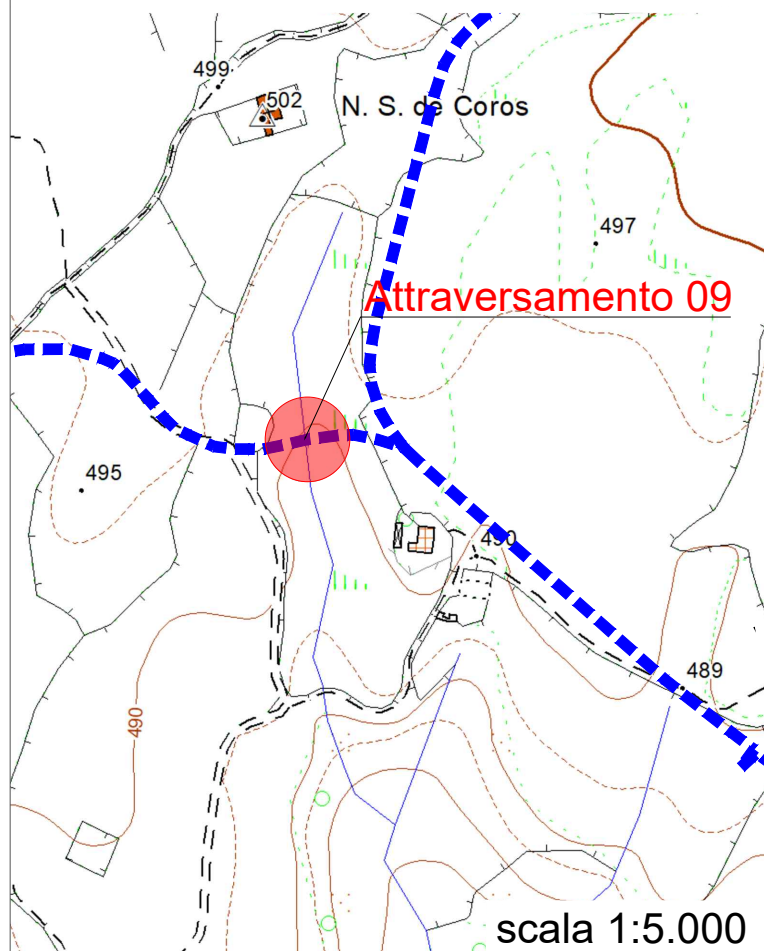
scala 1:100

ATTRAVERSAMENTO 09

Inquadramento su IGM
WGS84 UTM-32N:466279.77E ; 4493893.20N



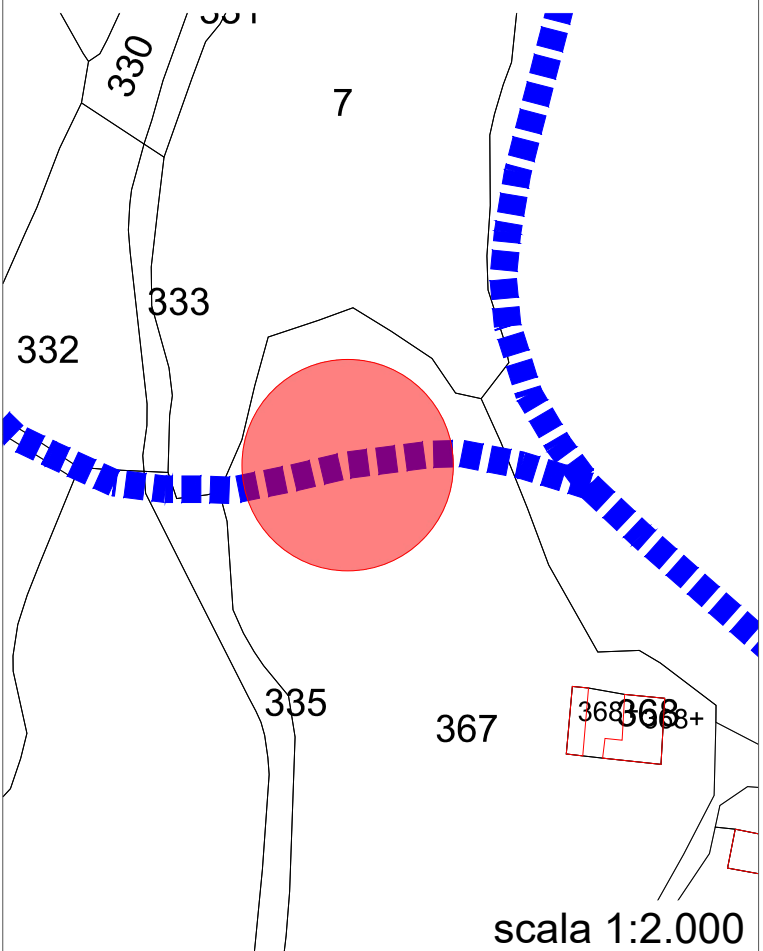
Inquadramento su CTR
WGS84 UTM-32N:466279.77E ; 4493893.20N



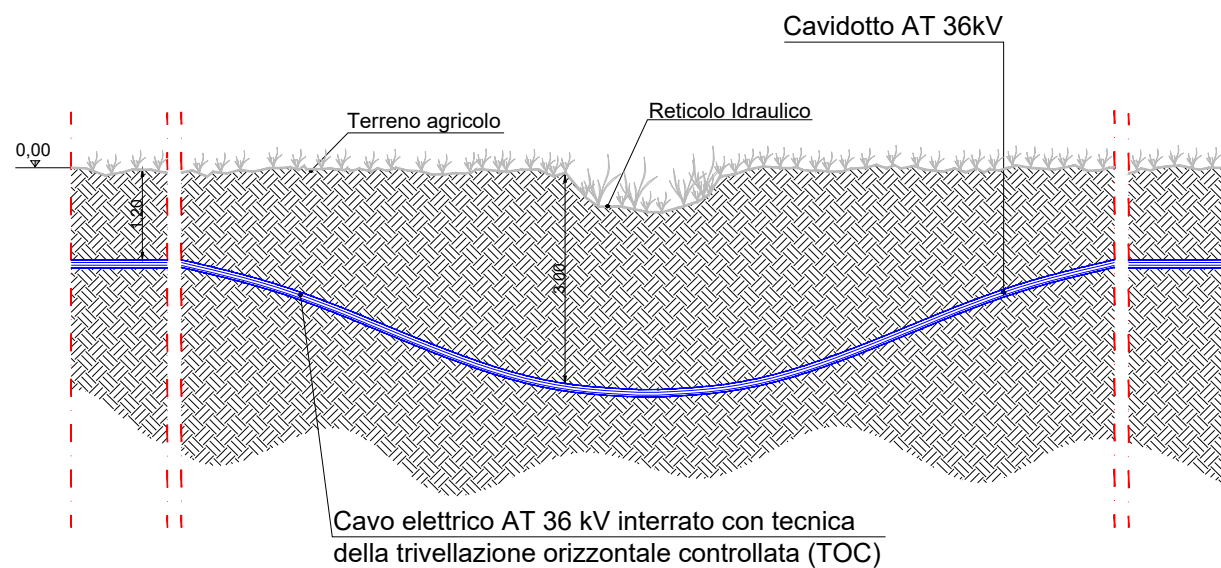
Inquadramento su Ortofoto
WGS84 UTM-32N:466279.77E ; 4493893.20N



Inquadramento su stralcio Catastale
WGS84 UTM-32N:466279.77E ; 4493893.20N

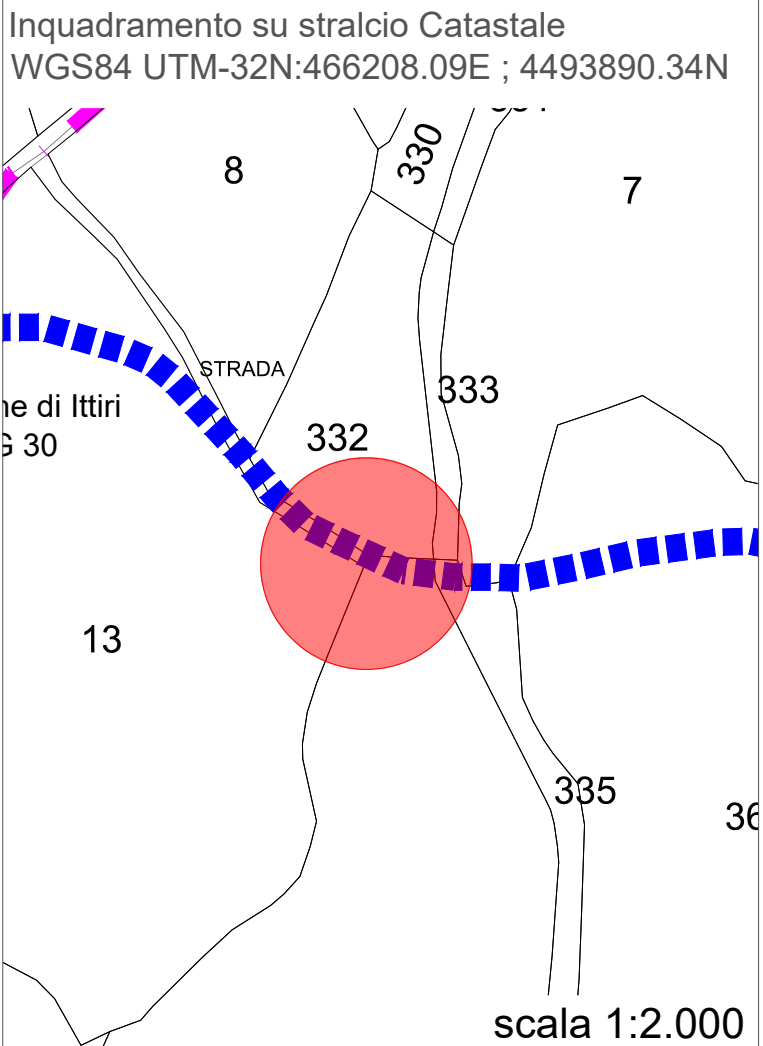
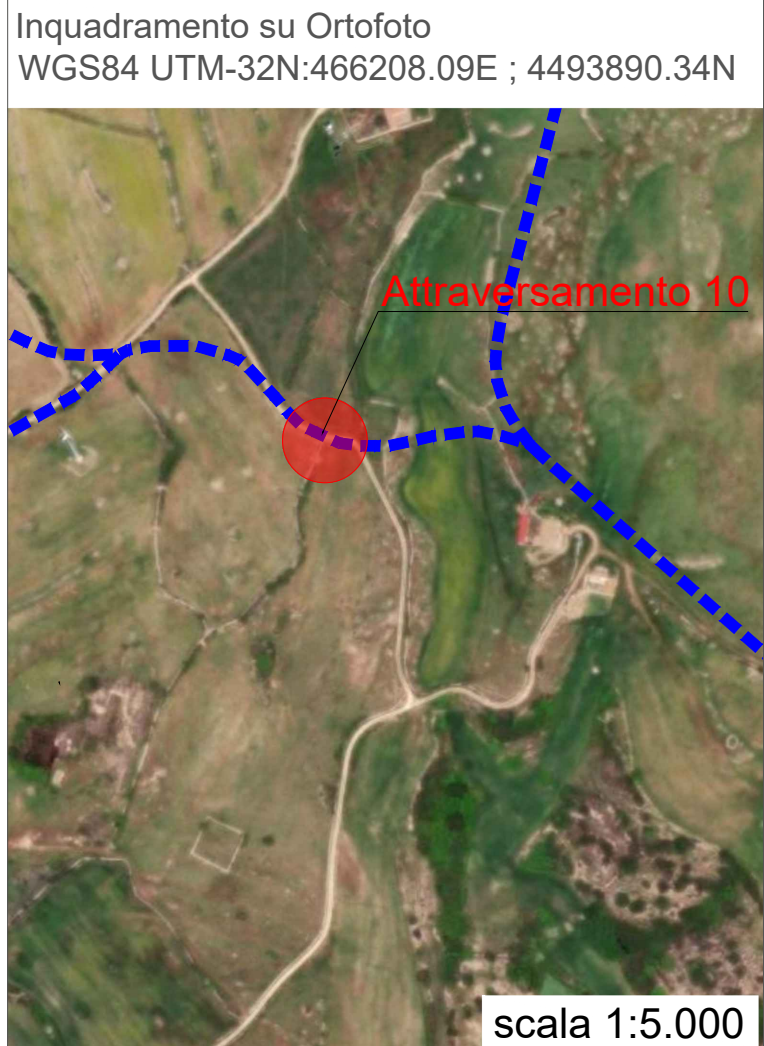
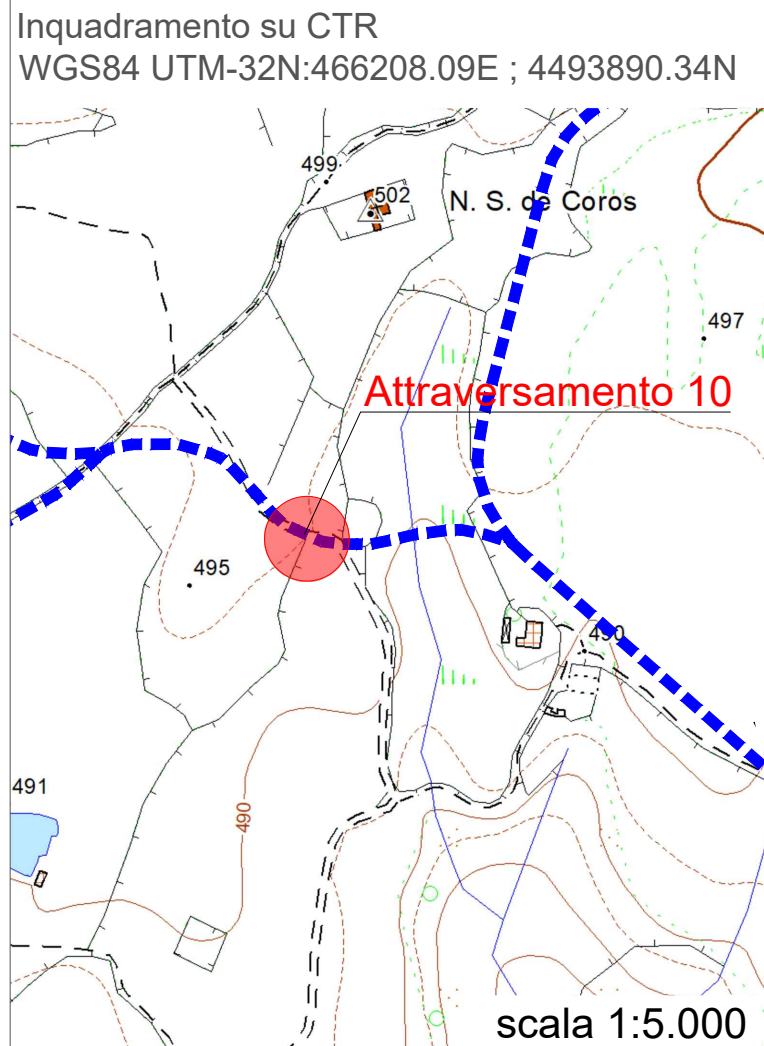
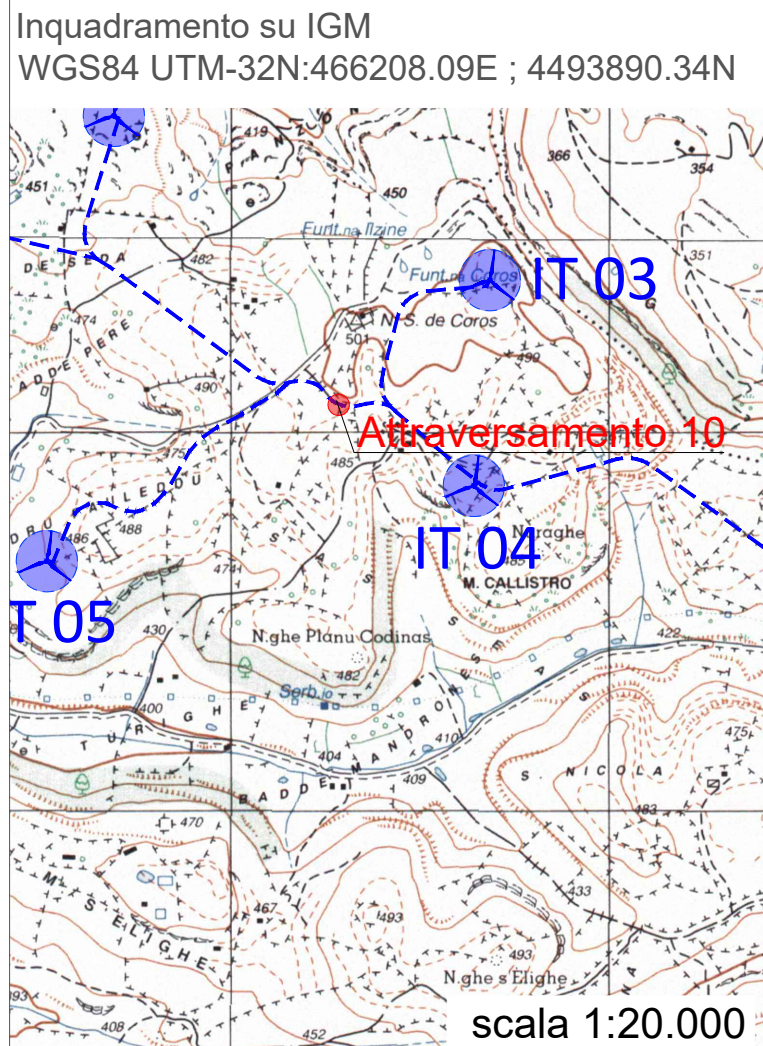


Tipici attraversamenti su canali e marane - Sezione Longitudinale

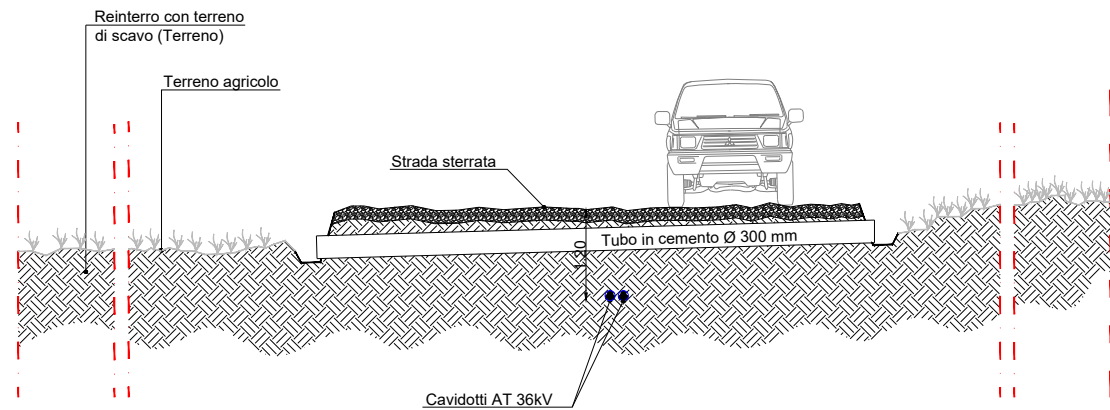


scala 1:100

ATTRAVERSAMENTO 10

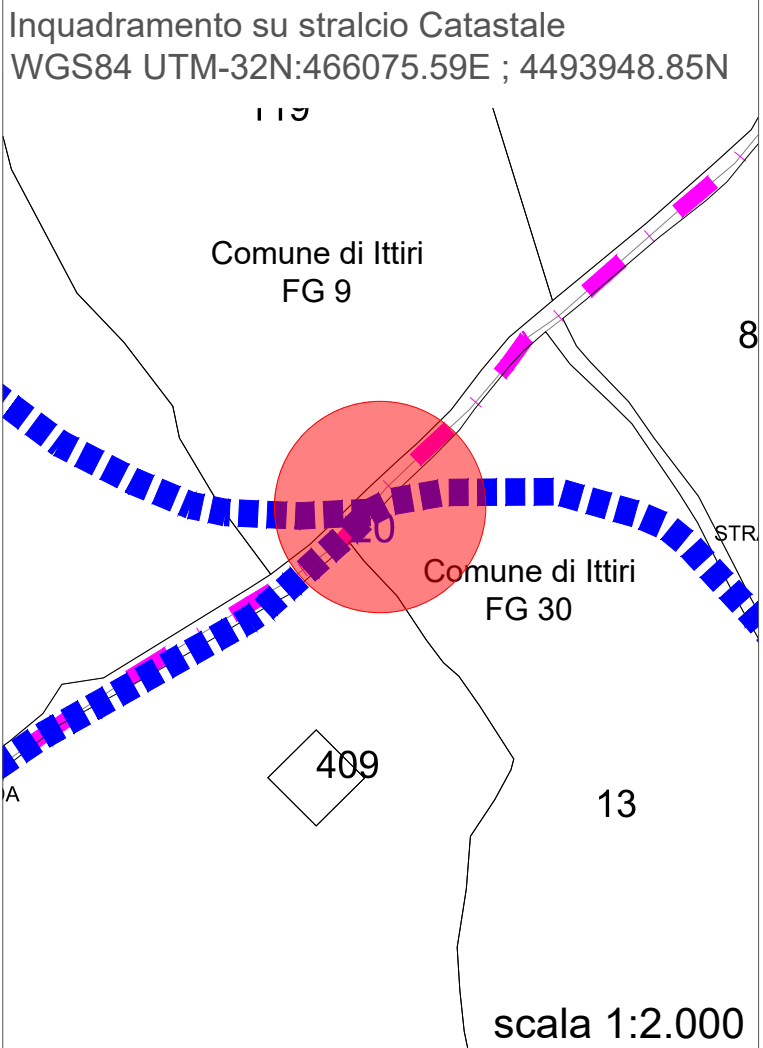
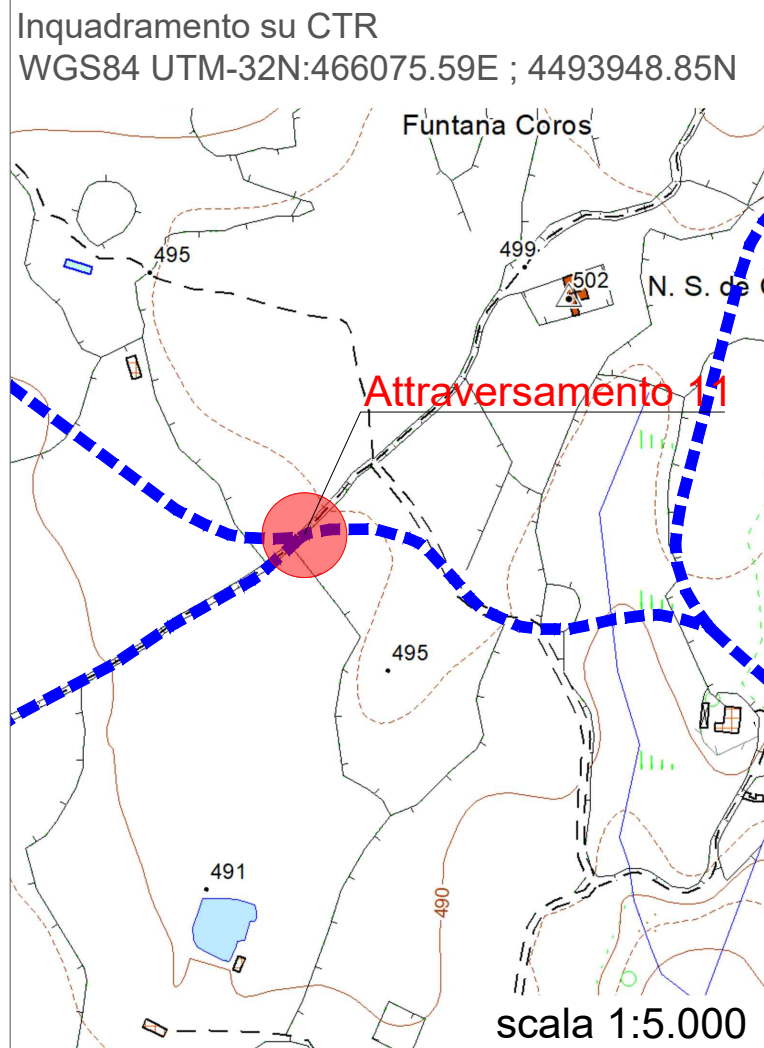
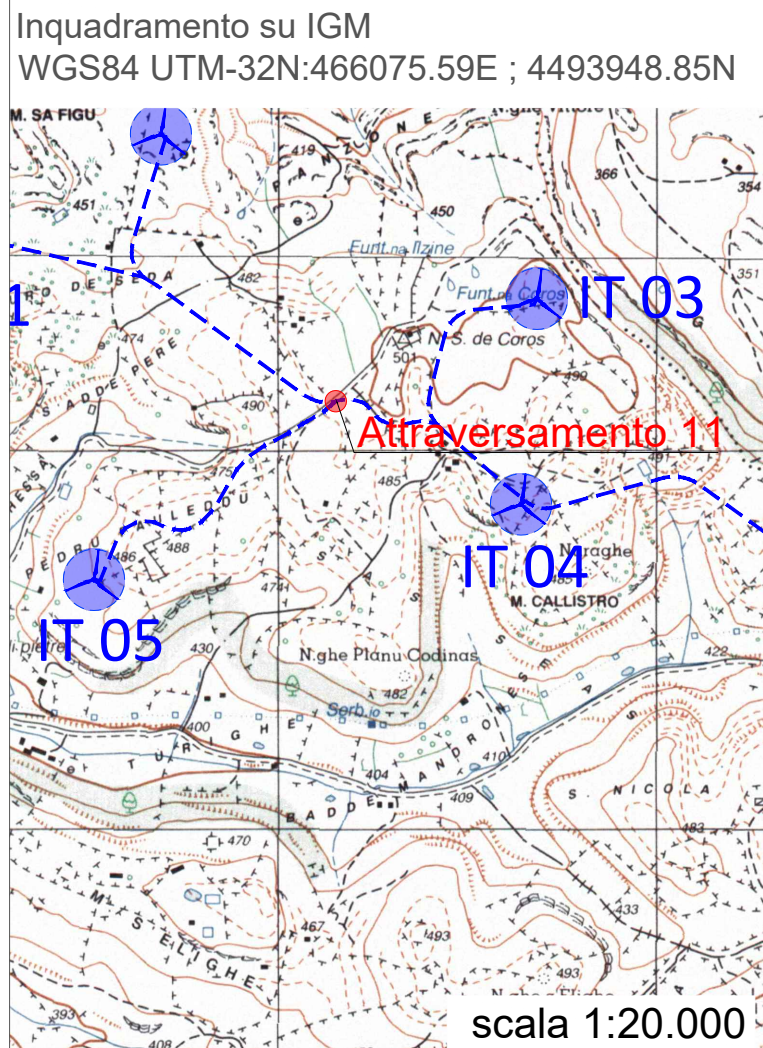


Tipici attraversamenti su strade bianche - Sezione Trasversale

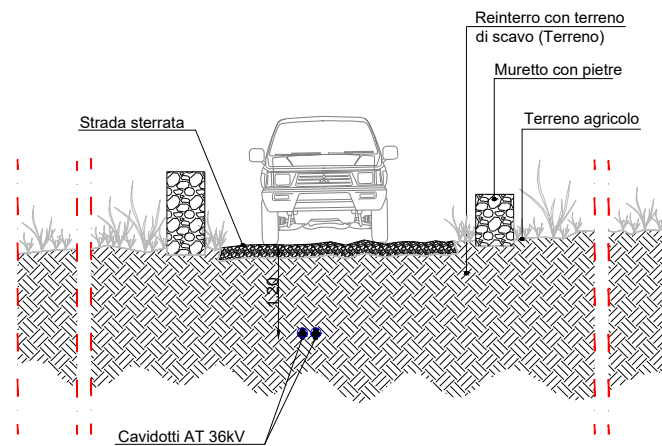


scala 1:100

ATTRAVERSAMENTO 11



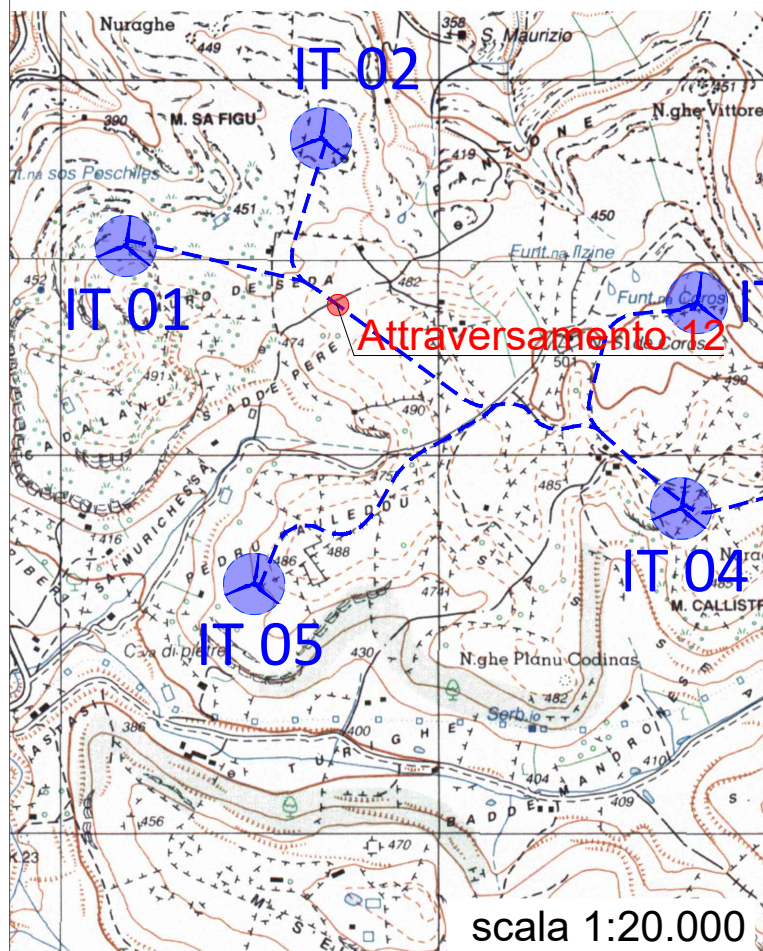
Tipici attraversamenti su strade bianche - Sezione Trasversale



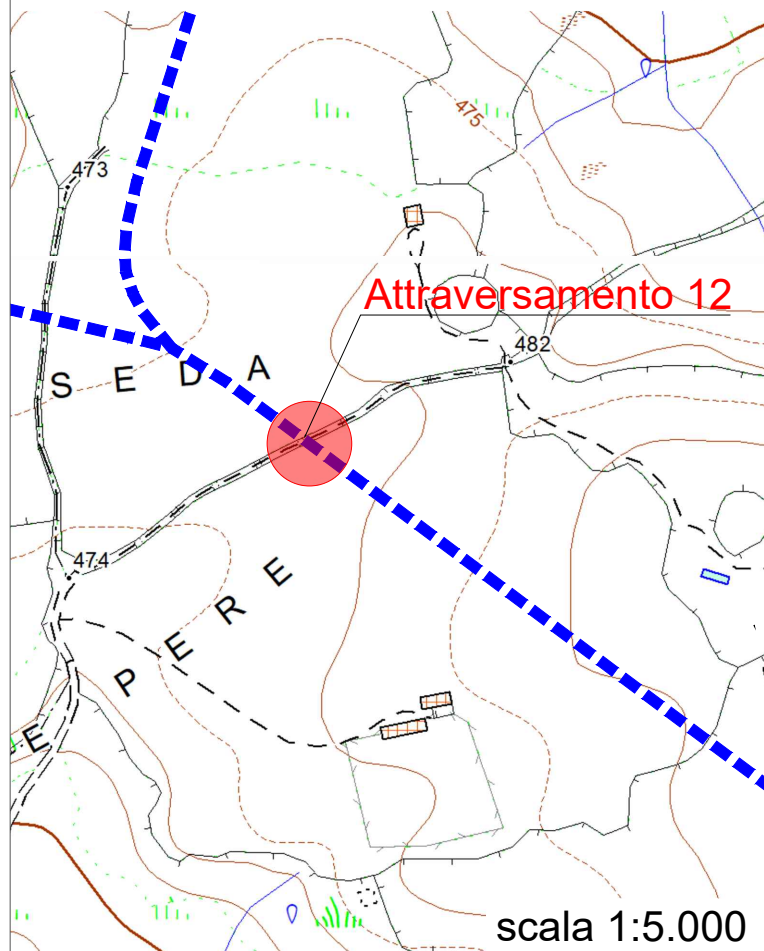
scala 1:100

ATTRAVERSAMENTO 12

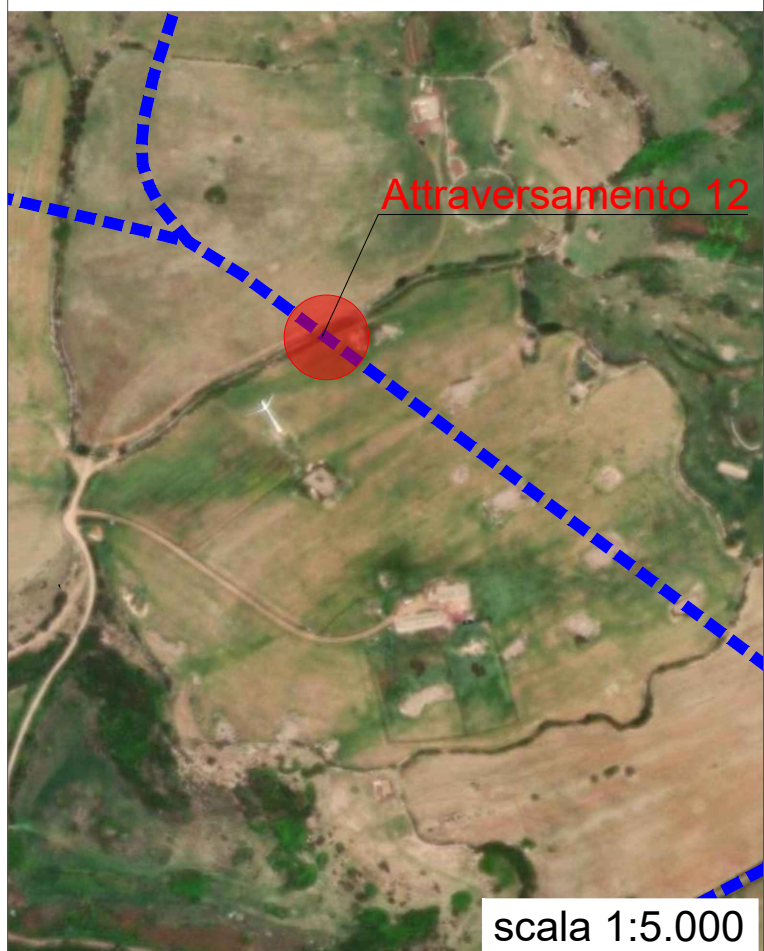
Inquadramento su IGM
WGS84 UTM-32N:465658.06E ; 4494214.11N



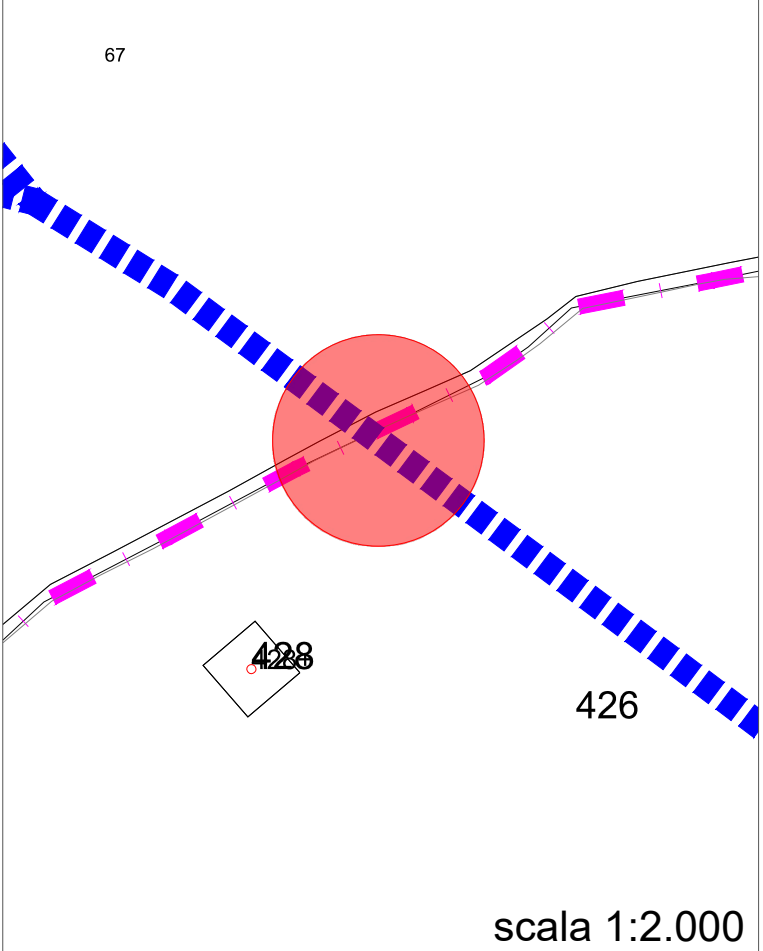
Inquadramento su CTR
WGS84 UTM-32N:465658.06E ; 4494214.11N



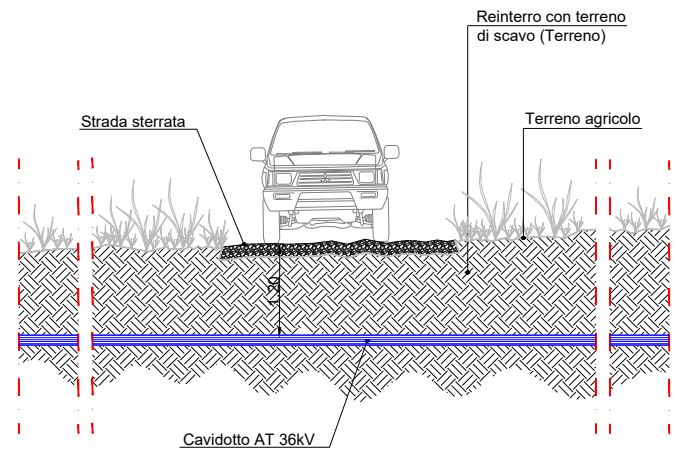
Inquadramento su Ortofoto
WGS84 UTM-32N:465658.06E ; 4494214.11N



Inquadramento su stralcio Catastale
WGS84 UTM-32N:465658.06E ; 4494214.11N



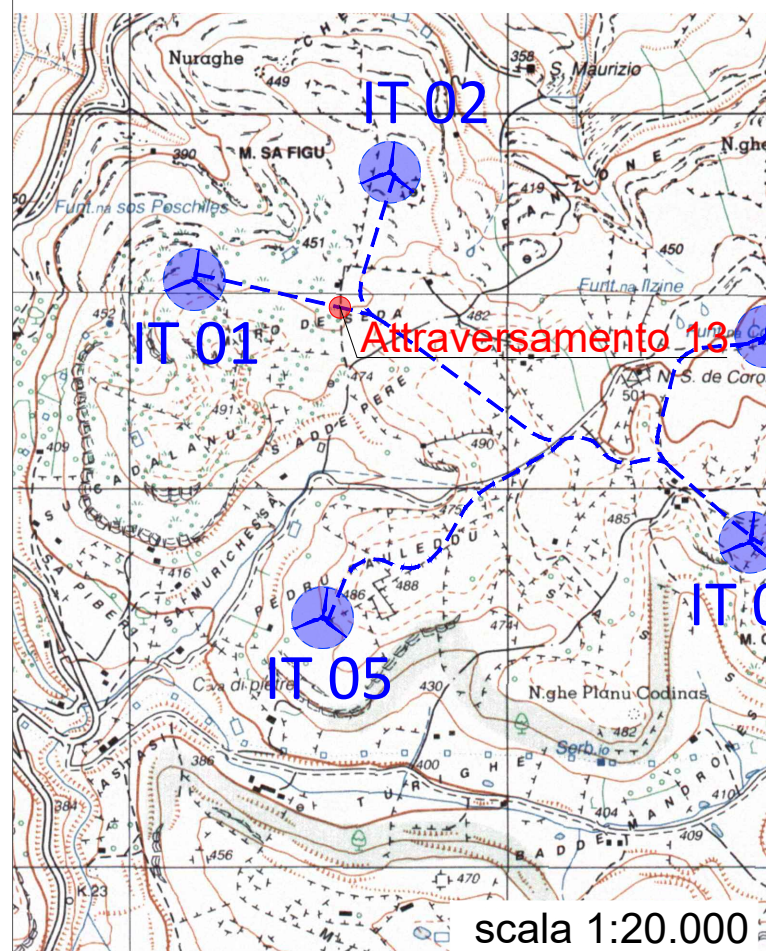
Tipici attraversamenti su strade bianche - Sezione Longitudinale



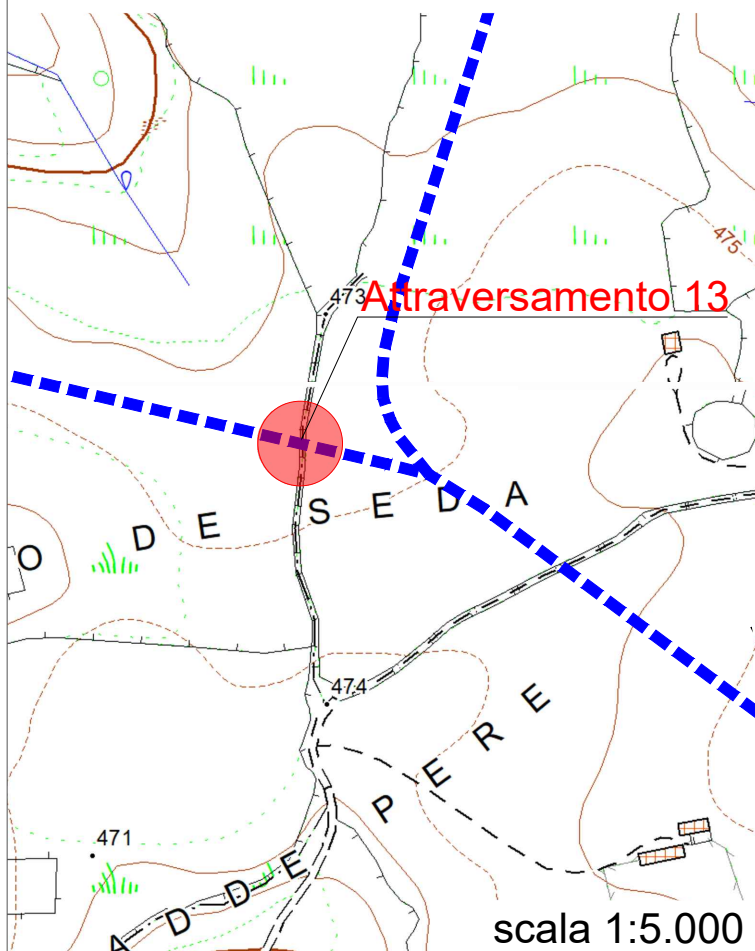
scala 1:100

ATTRAVERSAMENTO 13

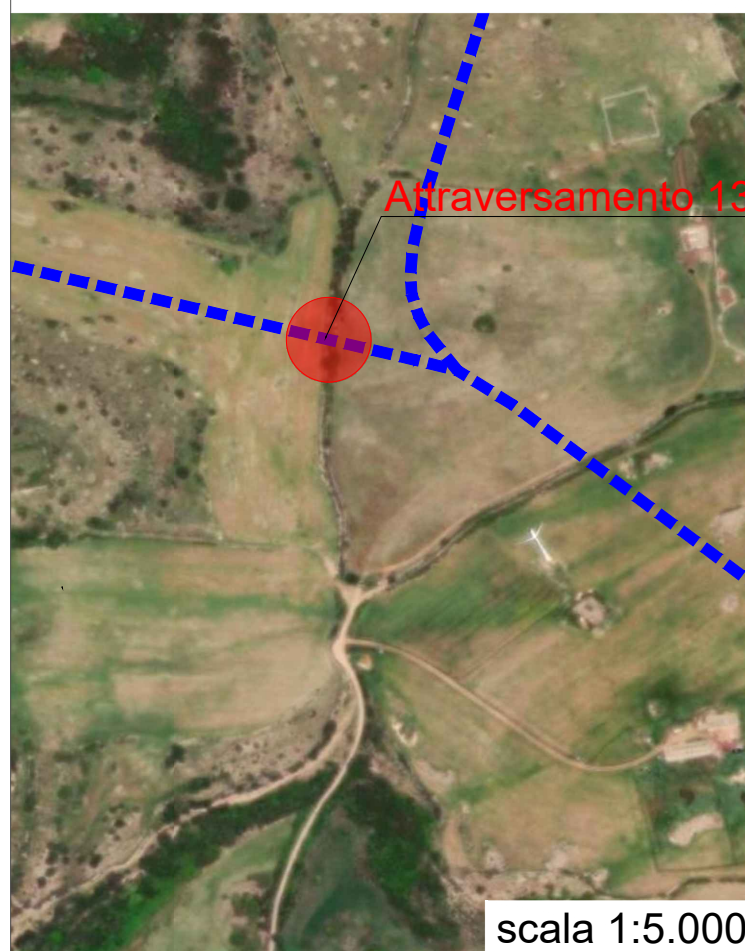
Inquadramento su IGM
WGS84 UTM-32N:465481.72E ; 4494297.73N



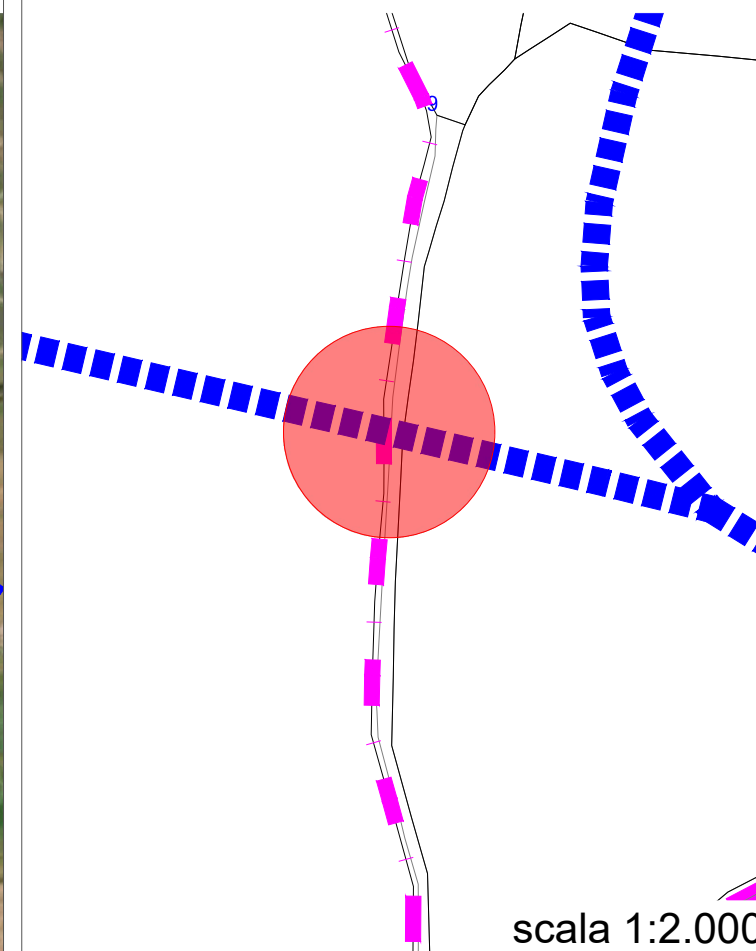
Inquadramento su CTR
WGS84 UTM-32N:465481.72E ; 4494297.73N



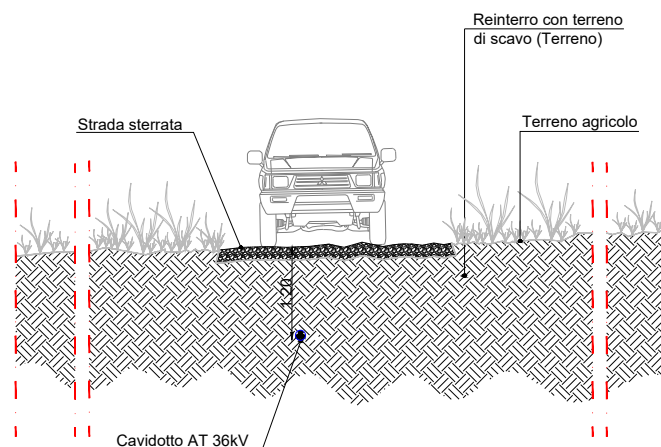
Inquadramento su Ortofoto
WGS84 UTM-32N:465481.72E ; 4494297.73N



Inquadramento su stralcio Catastale
WGS84 UTM-32N:465481.72E ; 4494297.73N

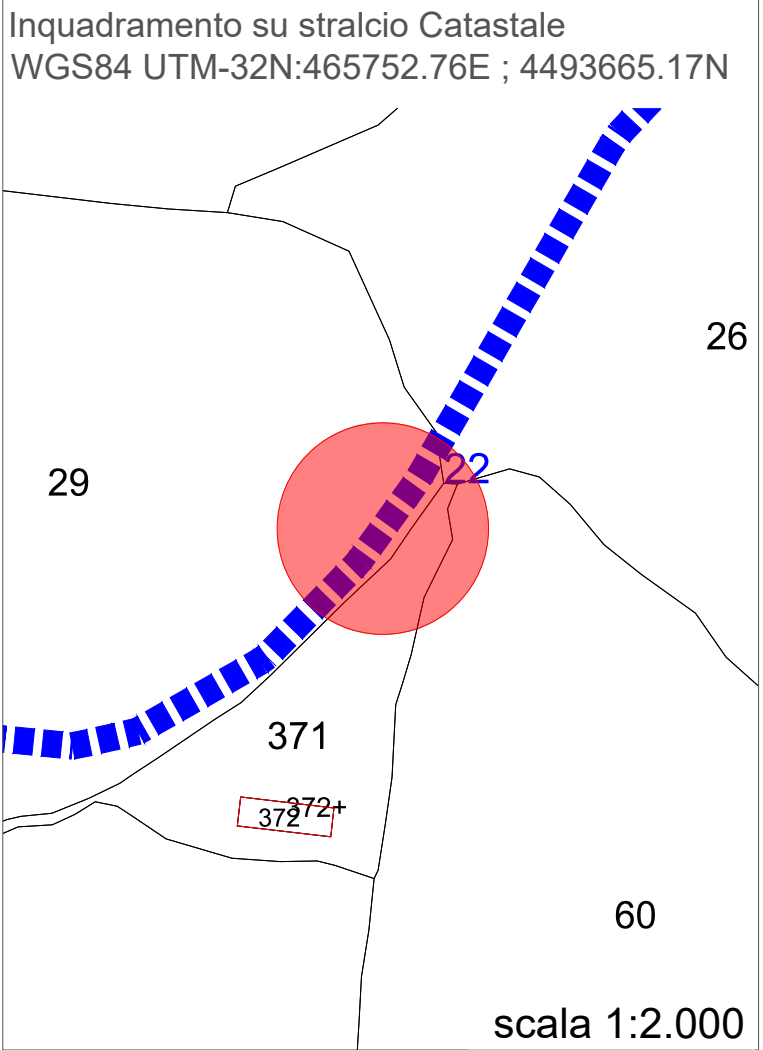
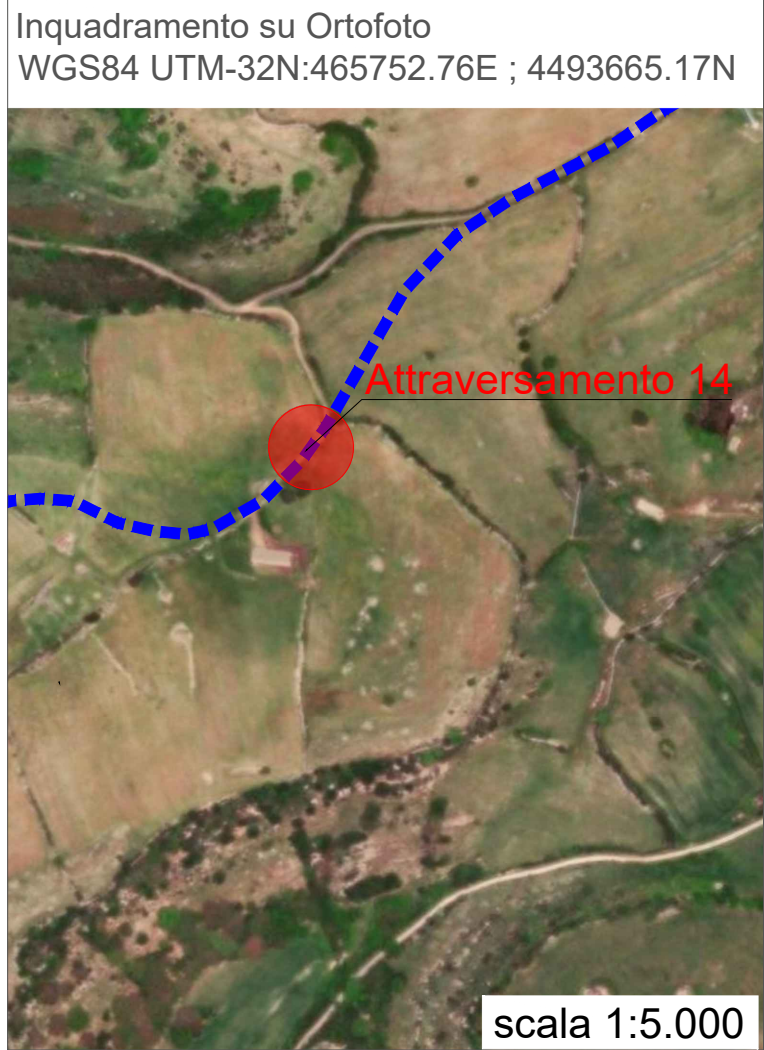
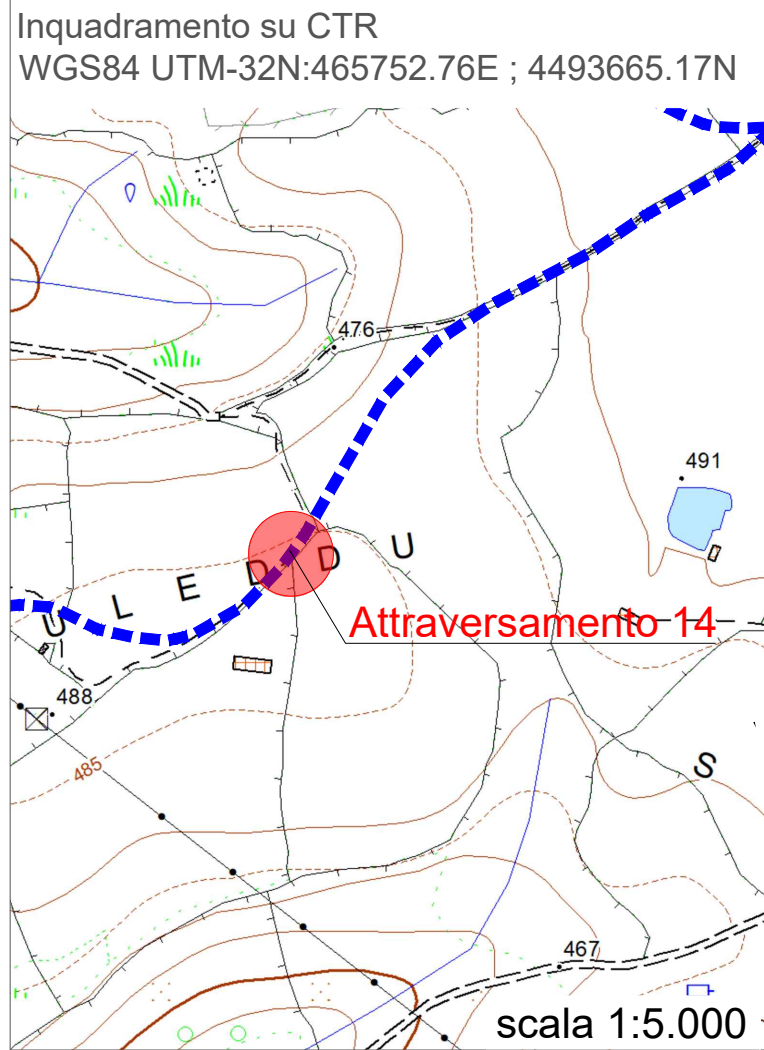
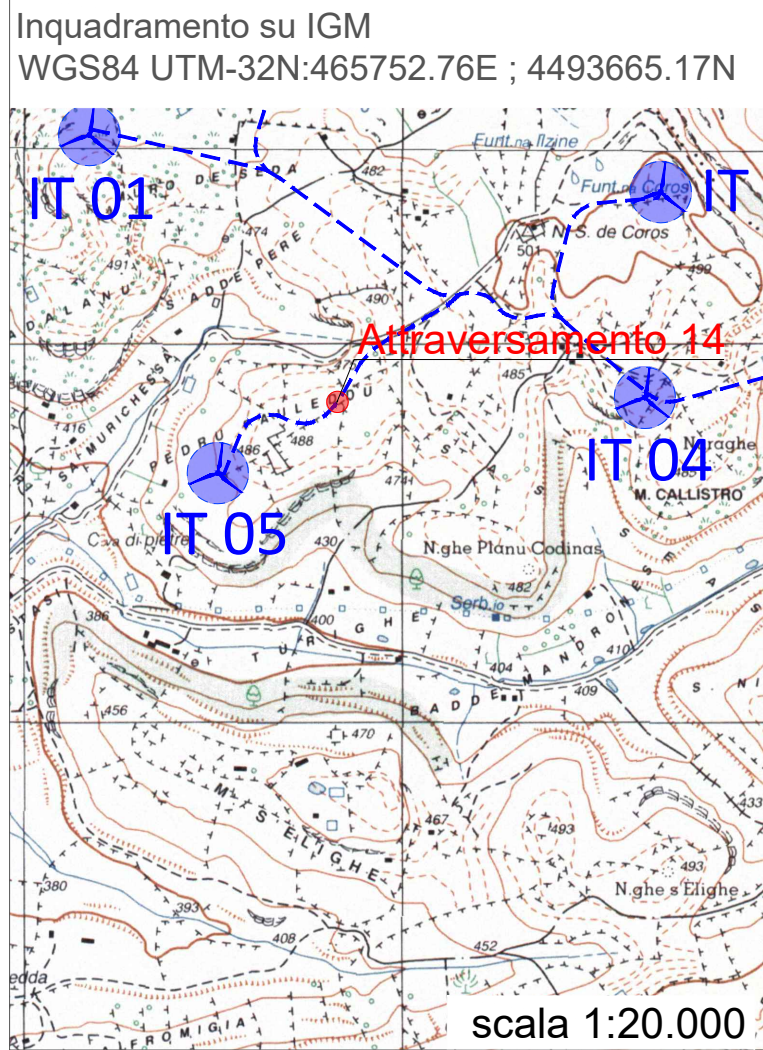


Tipici attraversamenti su strade bianche - Sezione Trasversale

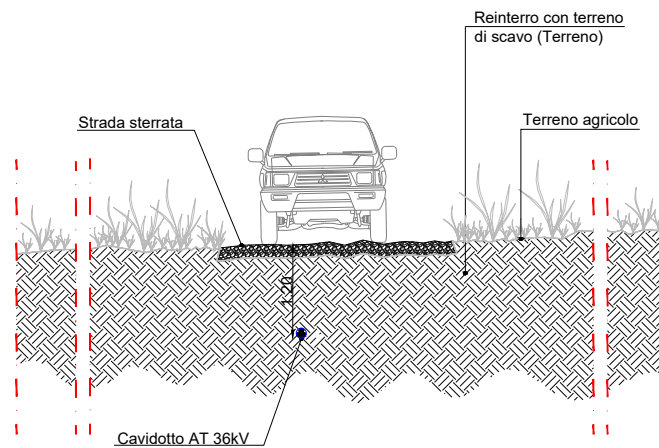


scala 1:100

ATTRAVERSAMENTO 14



Tipici attraversamenti su strade bianche - Sezione Trasversale



scala 1:100