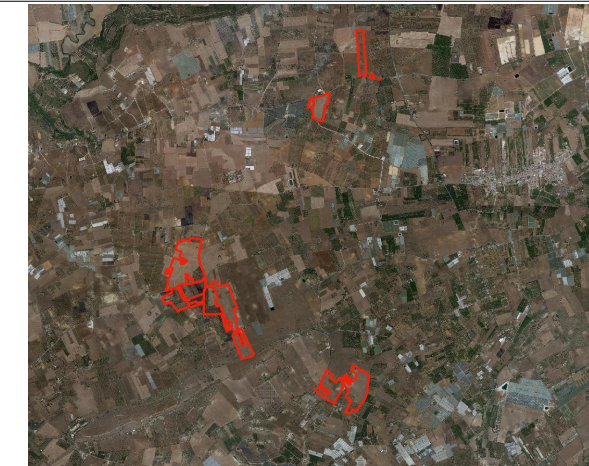




REGIONE SICILIA  
 PROVINCIA RAGUSA  
 COMUNE DI VITTORIA E  
 CHIARAMONTE GULFI



**PROGETTO PER LA REALIZZAZIONE DI UN IMPIANTO AGROVOLTAICO SITO NEI COMUNI DI VITTORIA E CHIARAMONTE GULFI, COMPRESO LE OPERE PER LA CONNESSIONE ALLA RETE ELETTRICA IN AT NEL COMUNE DI CHIARAMONTE GULFI (RG) POT. IMMISSIONE 51,00 MW - POT. IMPIANTO 52,09652 MWp**

**PROGETTO DEFINITIVO**

**PARTICOLARI COSTRUTTIVI  
 STRUTTURE DI SOSTEGNO**

Titolo elaborato

Committente



Sviluppo



Progettazione

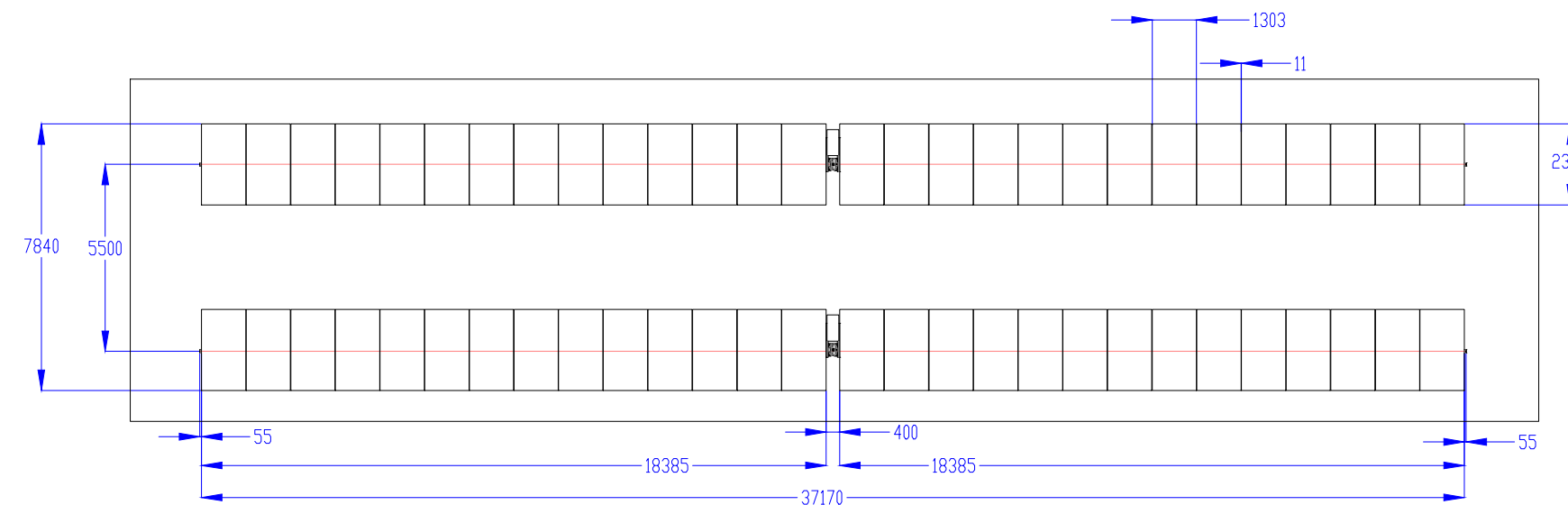
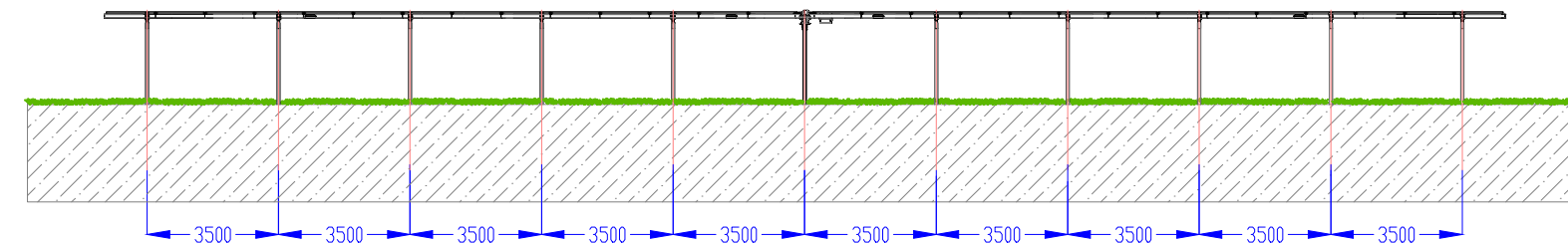


Firme

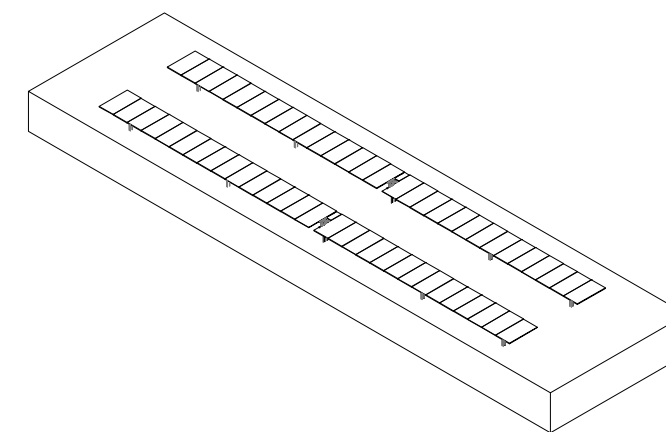
P02/22	PVI1EPD0035A0	P02/Vittoria/EPD/Part. strut. sostegno	-	A2	001/001
Commessa	Cod. elaborato	Nome file	Scala	Formato	Foglio
00	10.06.2022	Emissione	RS	FB	AN
Rev.	Data	Oggetto revisione	Redatto	Verificato	Approvato

IL PRESENTE DOCUMENTO NON POTRA' ESSERE COPIATO, RIPRODOTTO O ALTRIMENTI PUBBLICATO, IN TUTTO O IN PARTE, SENZA IL CONSENSO SCRITTO. OGNI UTILIZZO NON AUTORIZZATO SARA' PERSECUITO A NORMA DI LEGGE.  
 THIS DOCUMENT CAN NOT BE COPIED, REPRODUCED OR PUBLISHED, EITHER IN PART OR IN ITS ENTIRETY, WITHOUT THE WRITTEN PERMISSION. UNAUTHORIZED USE WILL BE PROSECUTED BY LAW.

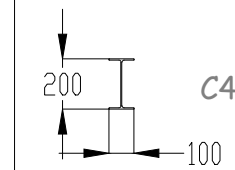
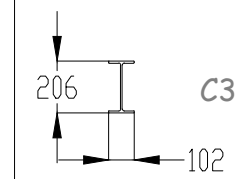
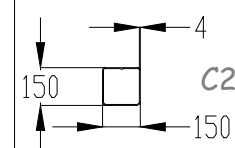
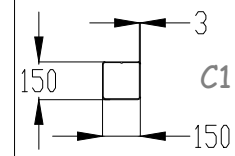
Struttura tipo - Stringhe da 28 moduli



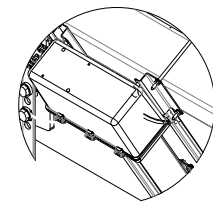
Particolare struttura - Vista 3D



Sections

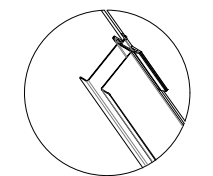


Electronic Box



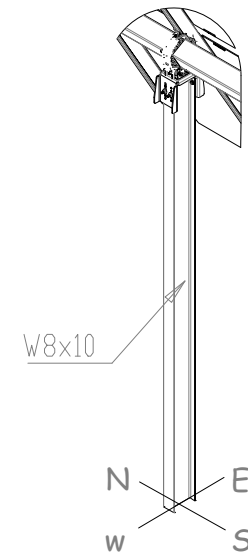
Detail D  
Scale 1:20

Middle Clamp



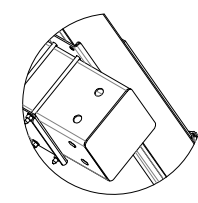
Detail F  
Scale 1:15

Simple Support



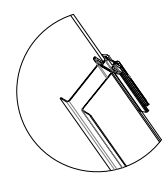
Detail B  
Scale 1:50

Plastic Lid



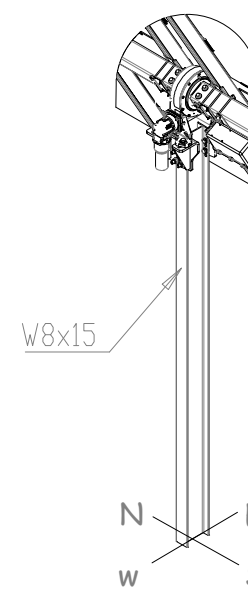
Detail C  
Scale 1:15

End Clamp



Detail E  
Scale 1:15

Motor Support



Detail A  
Scale 1:50