



COMUNE DI BADIA TEDALDA

REGIONE
TOSCANA



REGIONE TOSCANA

COSTRUZIONE ED ESERCIZIO DI UN IMPIANTO DI PRODUZIONE DELL'ENERGIA ELETTRICA DA FONTE EOLICA AVENTE POTENZA IN IMMISSIONE PARI A 54 MW CON RELATIVO COLLEGAMENTO ALLA RETE ELETTRICA - IMPIANTO DENOMINATO "BADIA WIND" UBICATO IN AGRO DEL COMUNE DI BADIA TEDALDA.

ELABORATO: PROFILI LONGITUDINALI VIABILITA' DI PROGETTO

COMMITTENTE
SCS INNOVATIONS
Via GEN ANTONELLI 3 - MONOPOLI

PROGETTAZIONE



PROGETTAZIONE

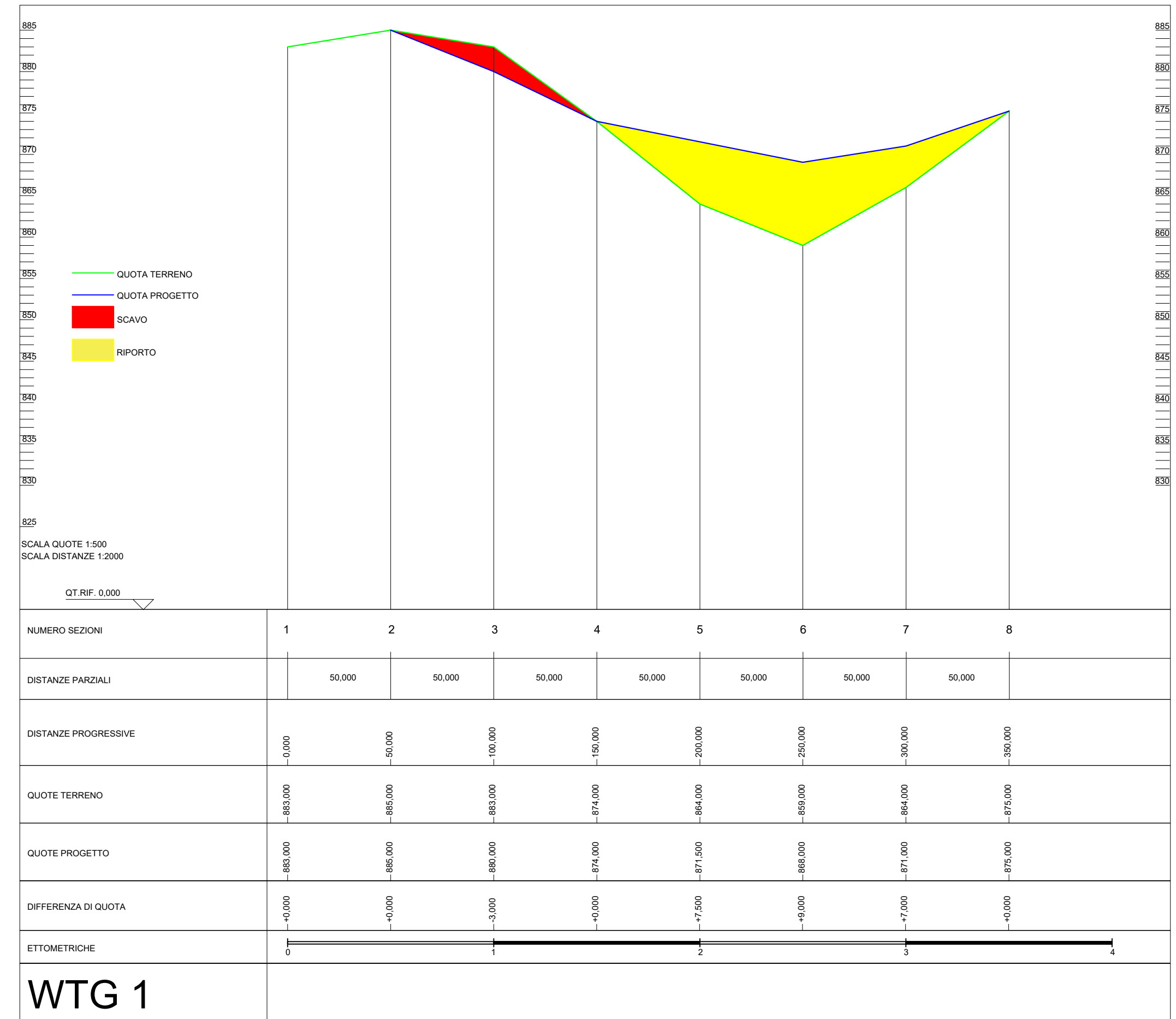
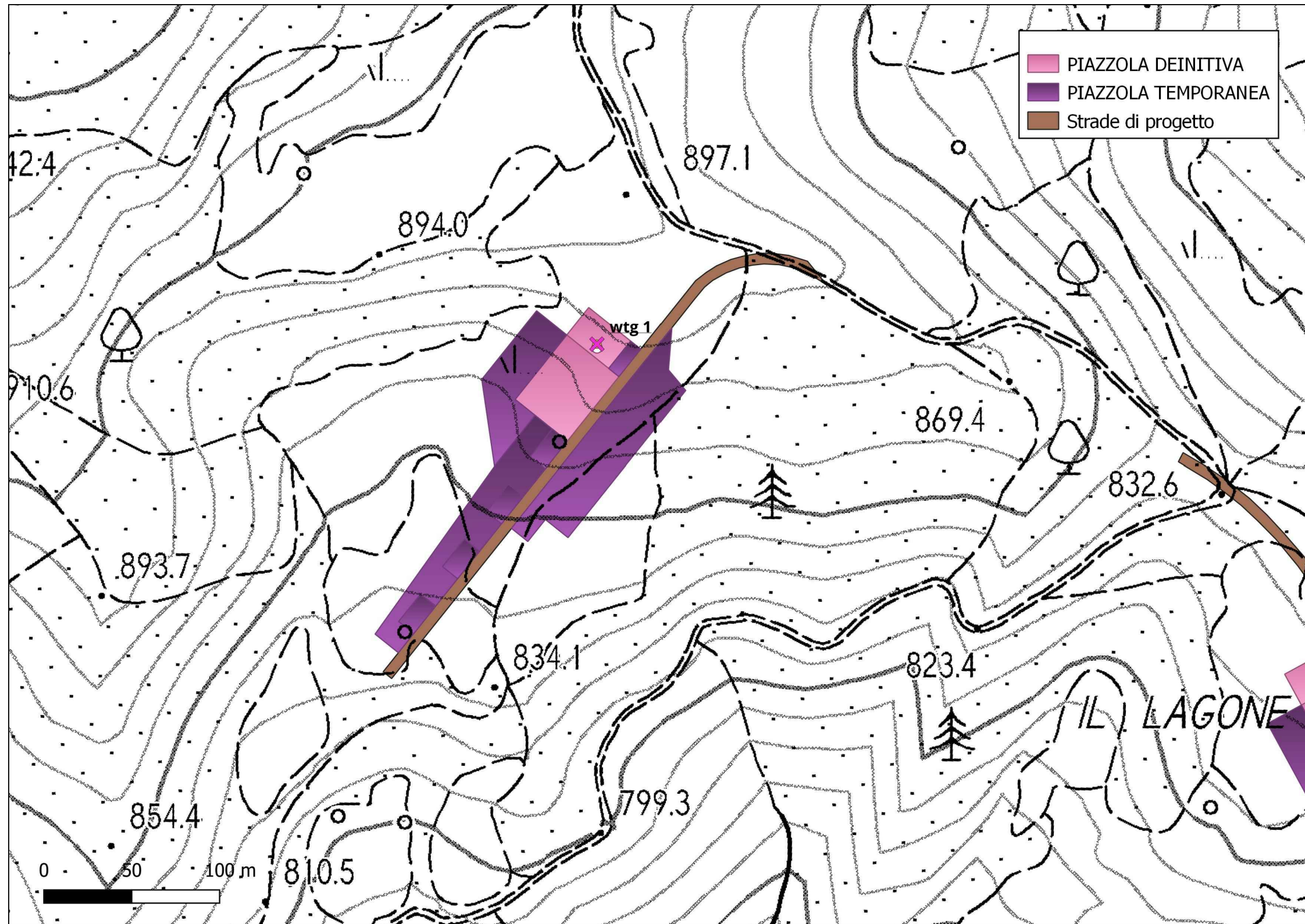


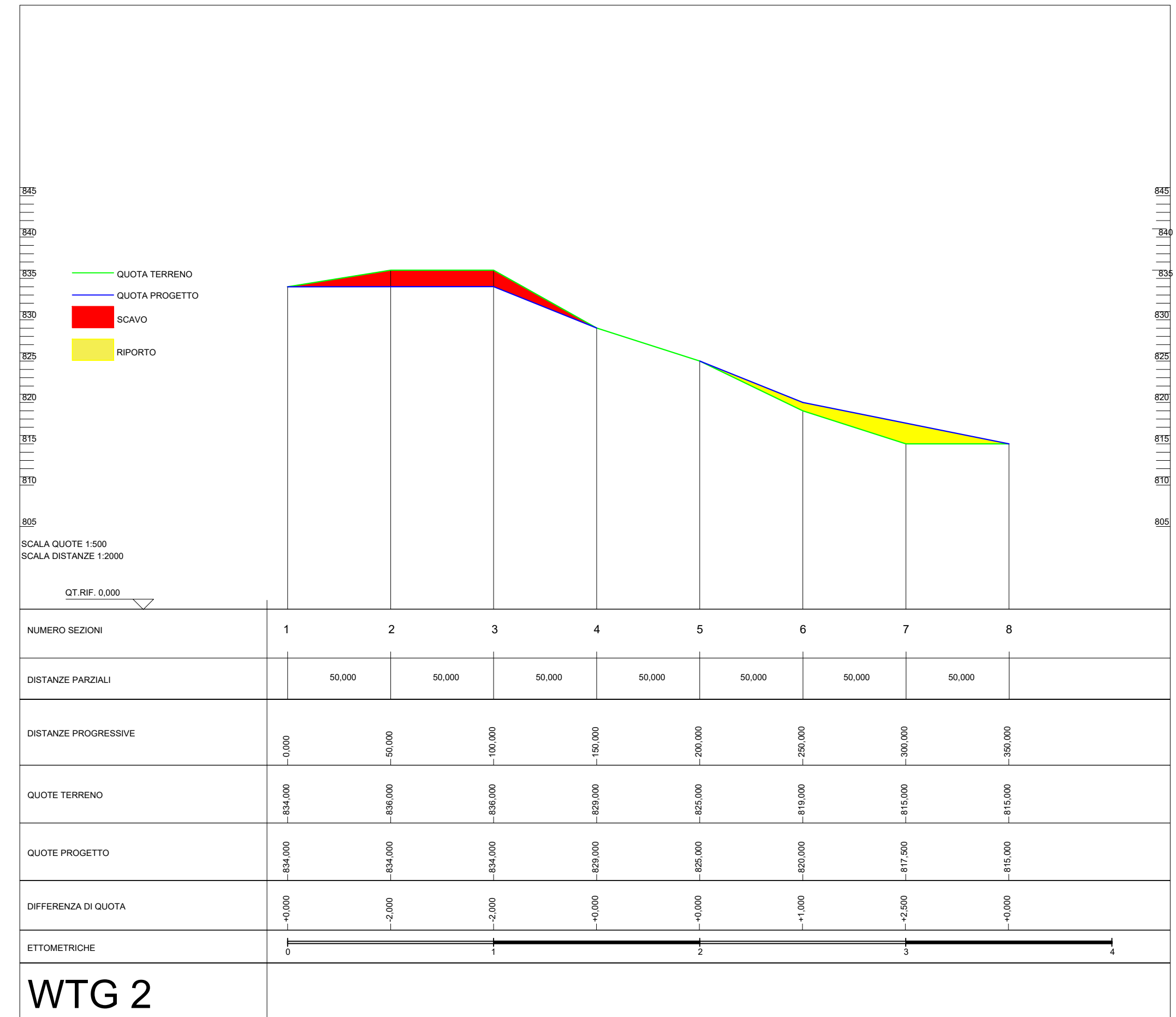
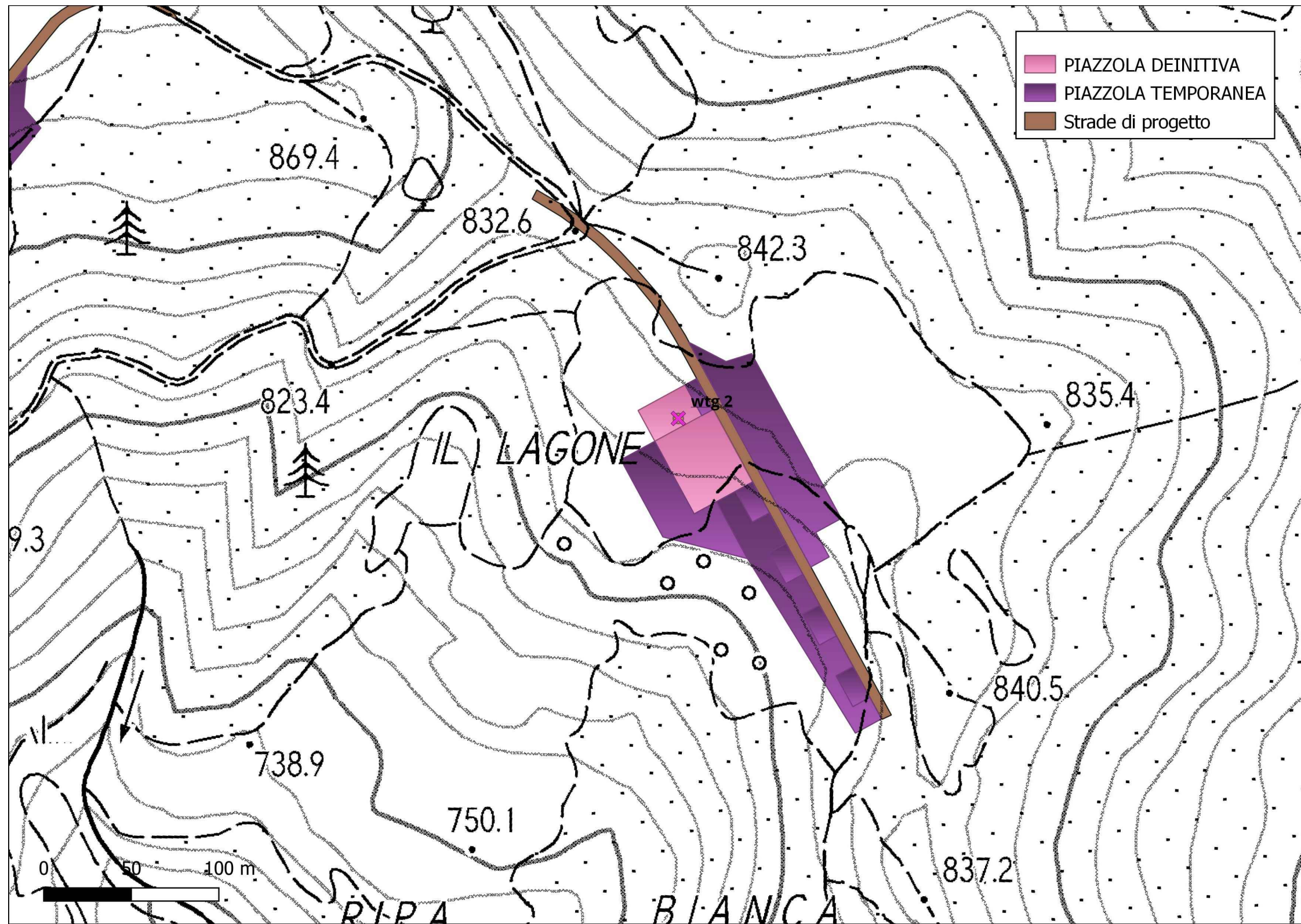
PROGETTAZIONE

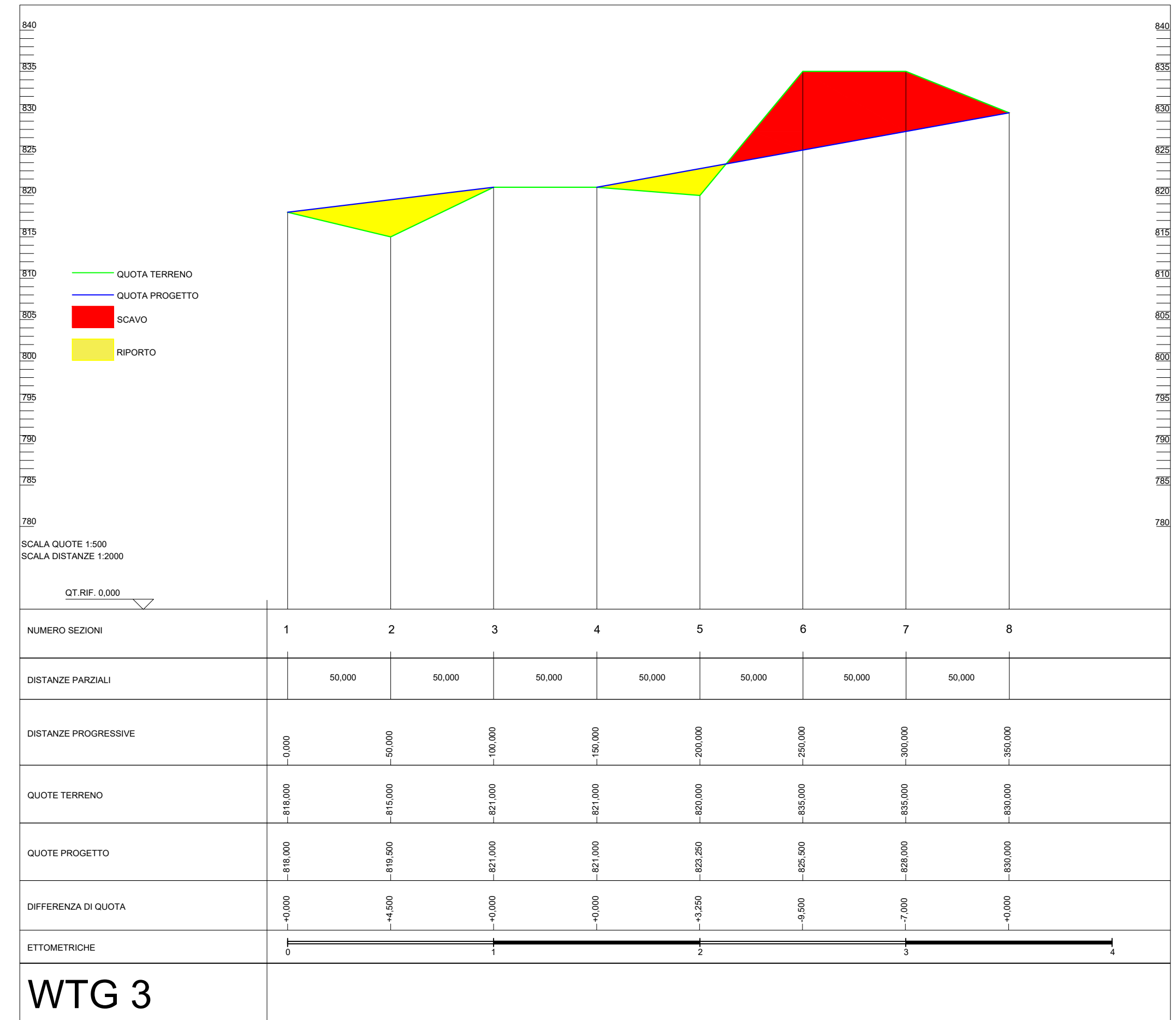
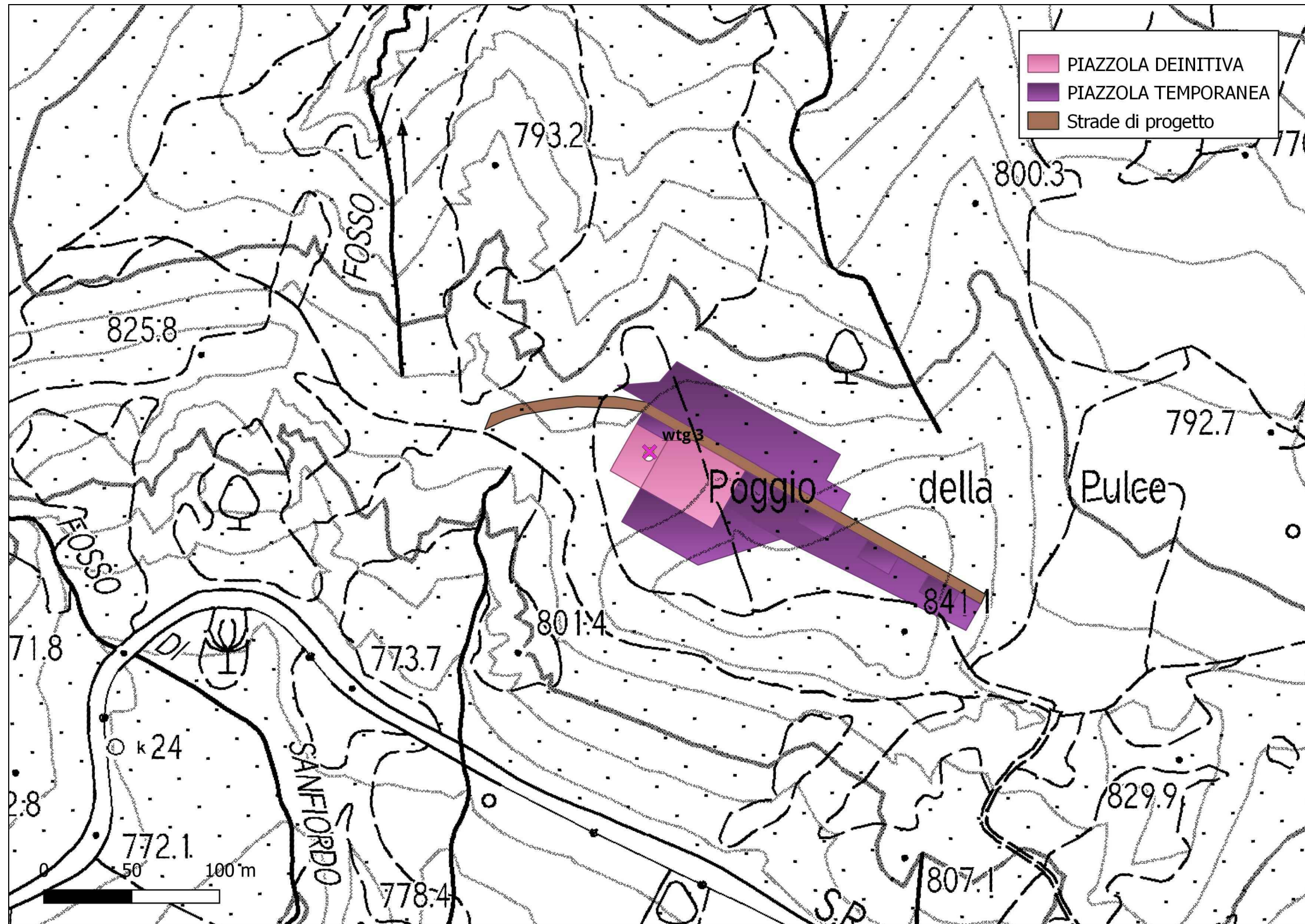


REVISIONI

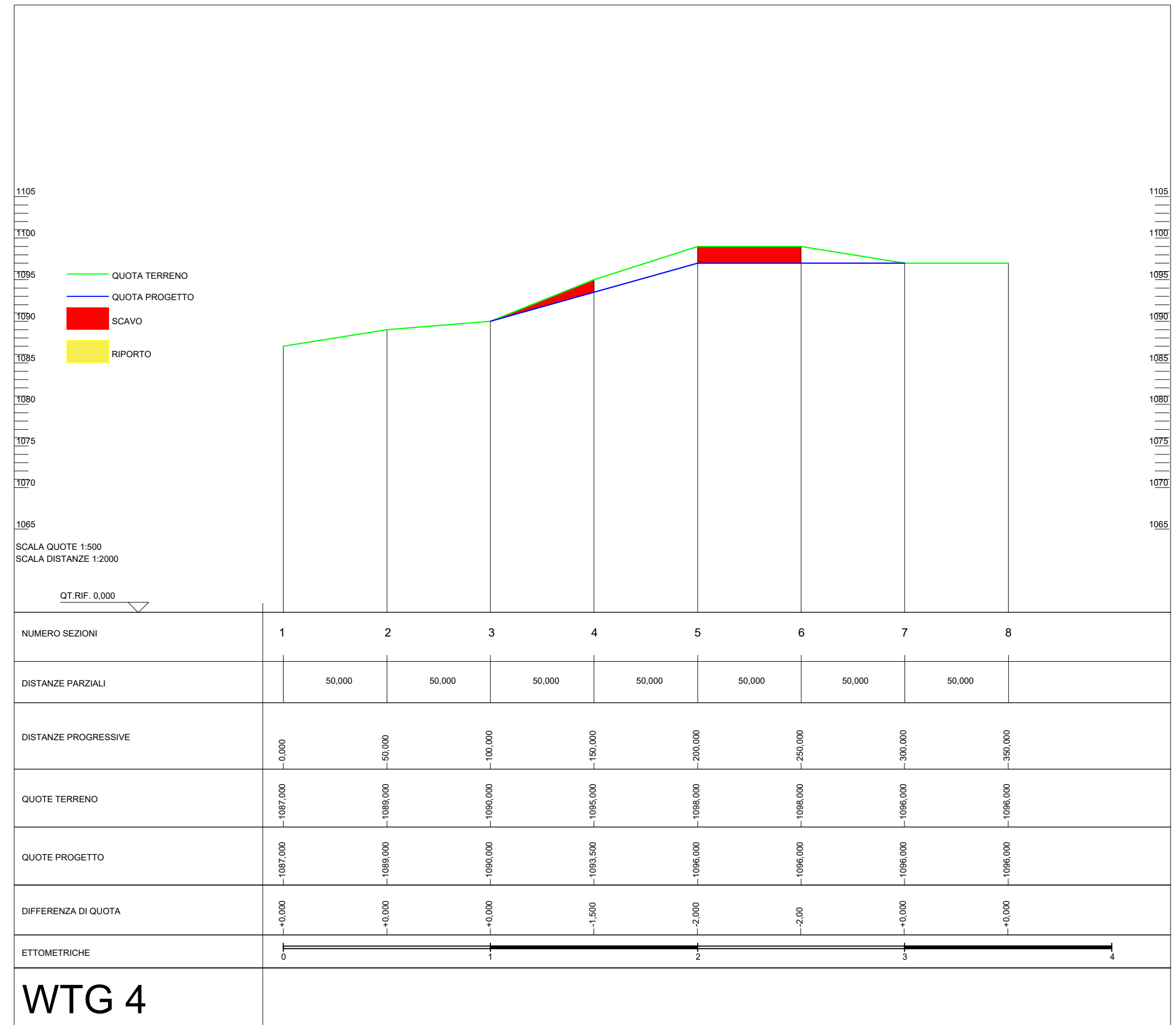
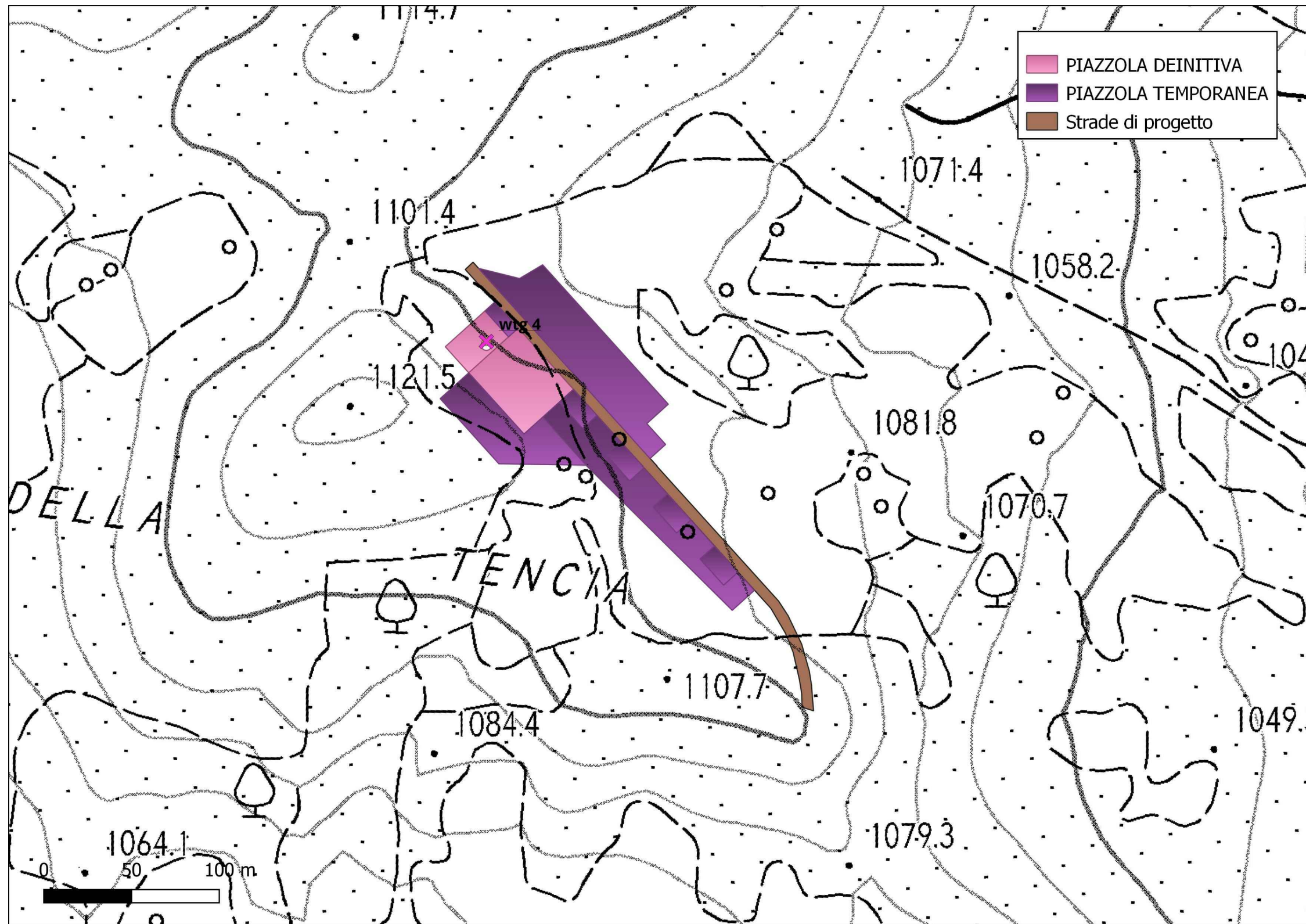
REV	DATA	DESCRIZIONE	ESEGUITO	VERIFICATO	APPROVATO
	APRILE 2023		Geom. Andrea Tumolo	Ing. Emanuele Verdoscia	Ing. Emanuele Verdoscia

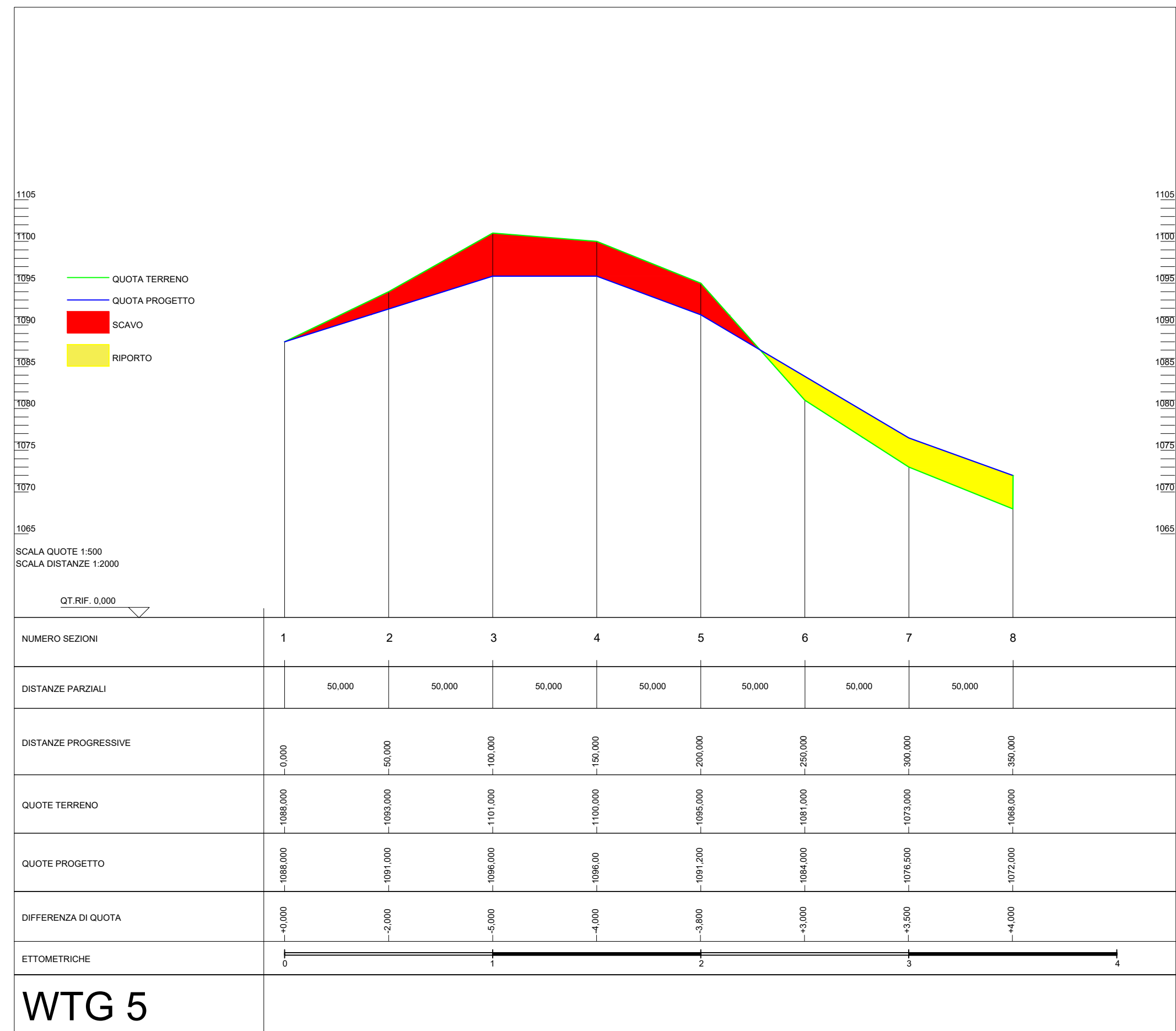
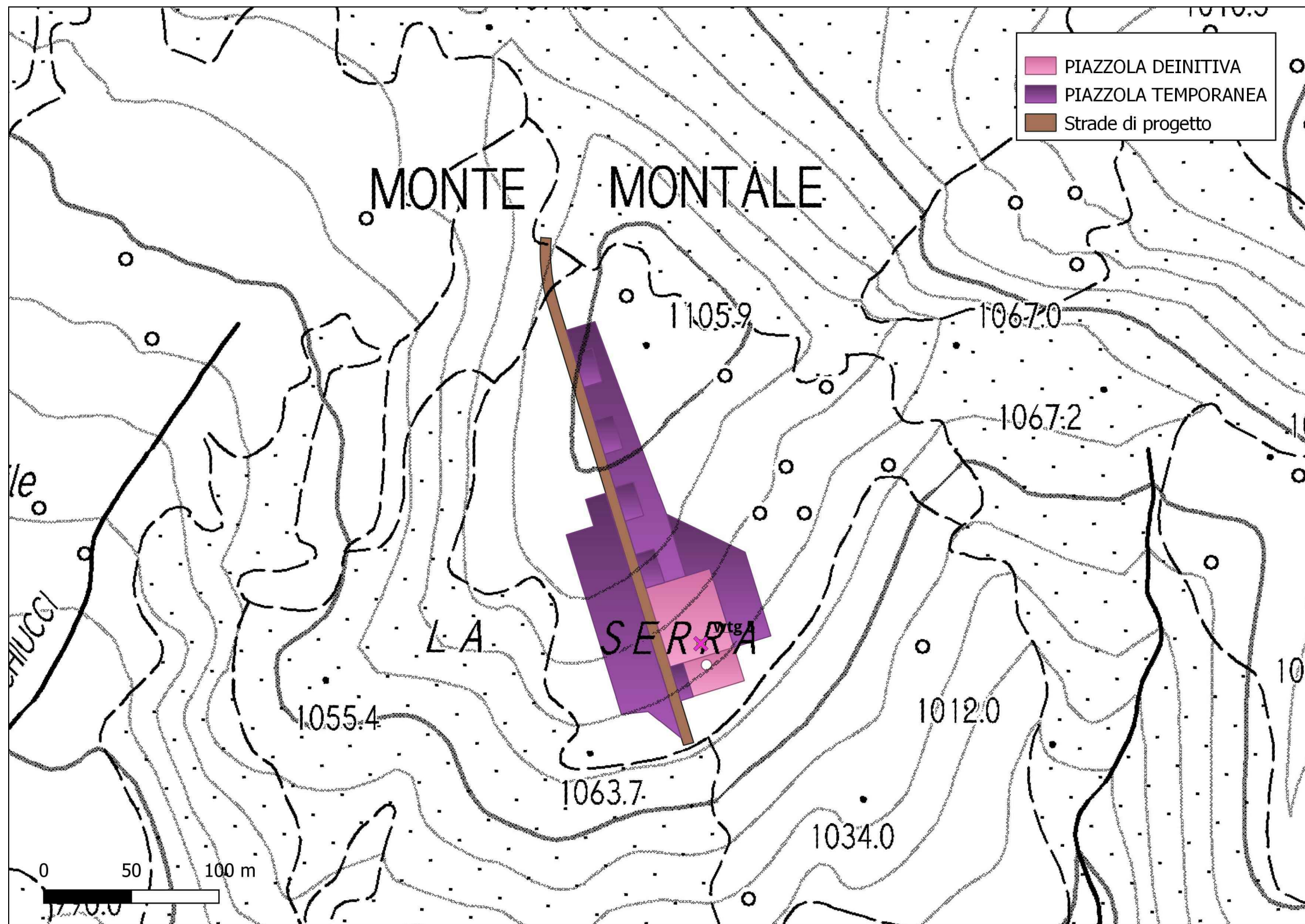




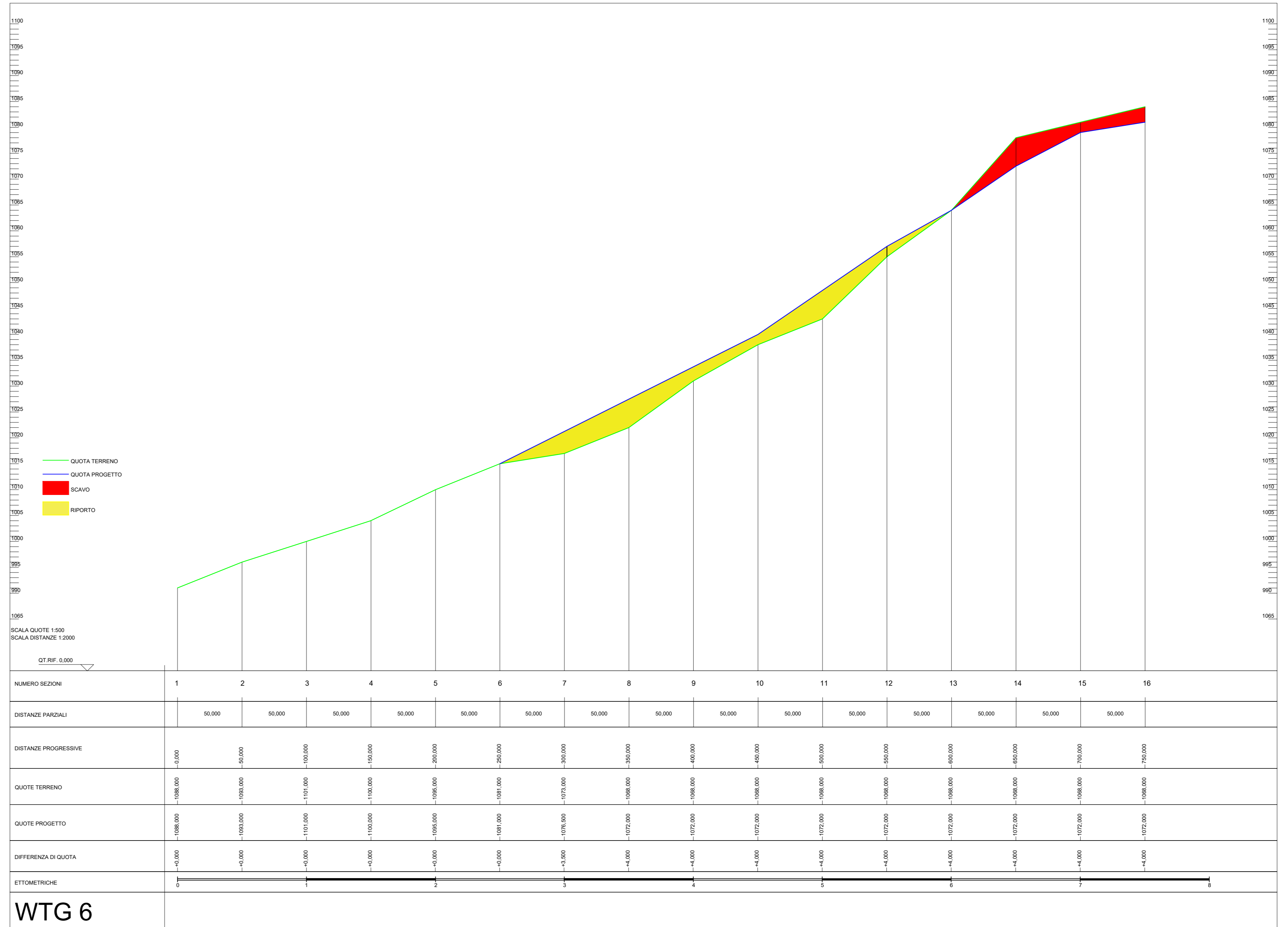
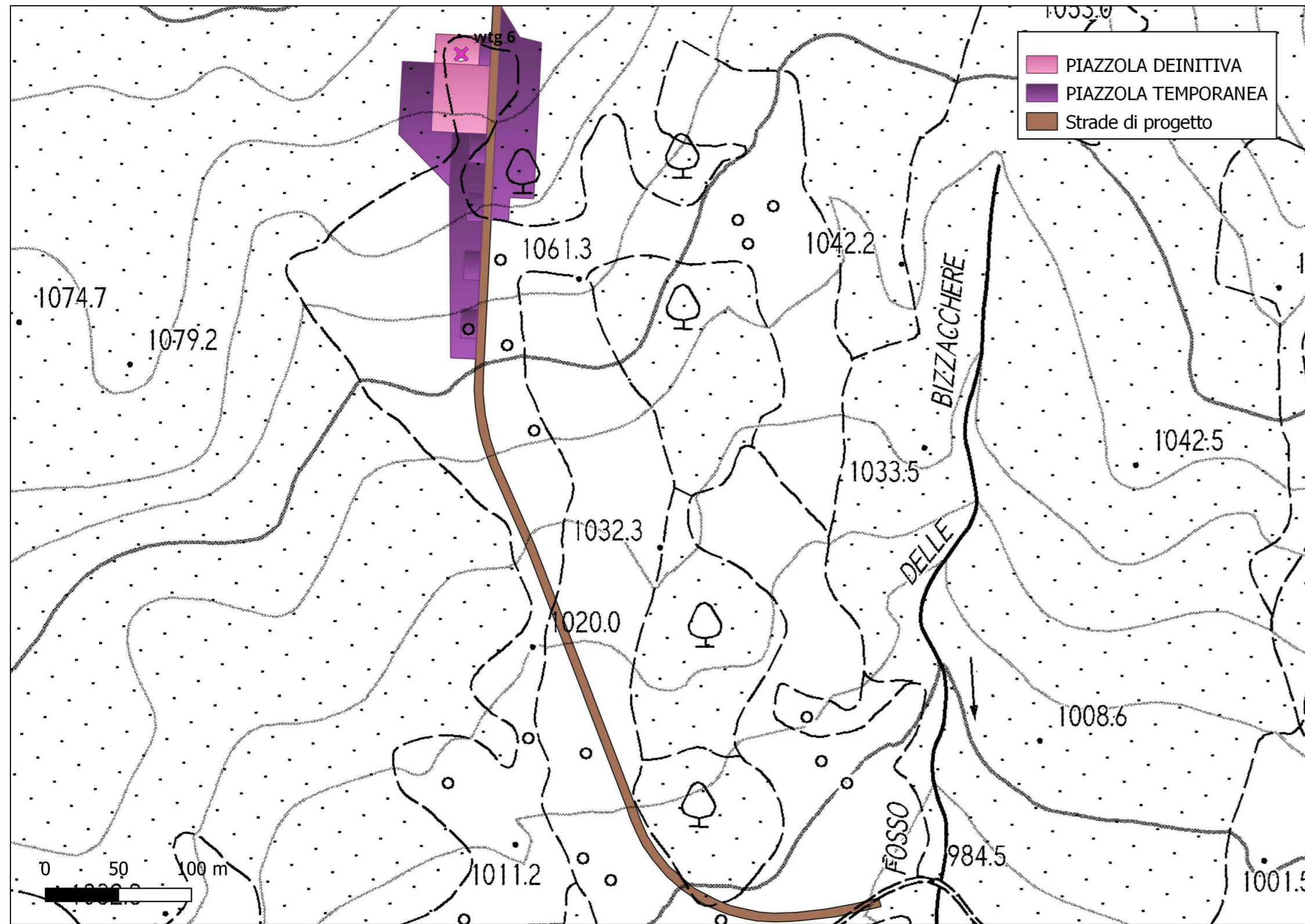


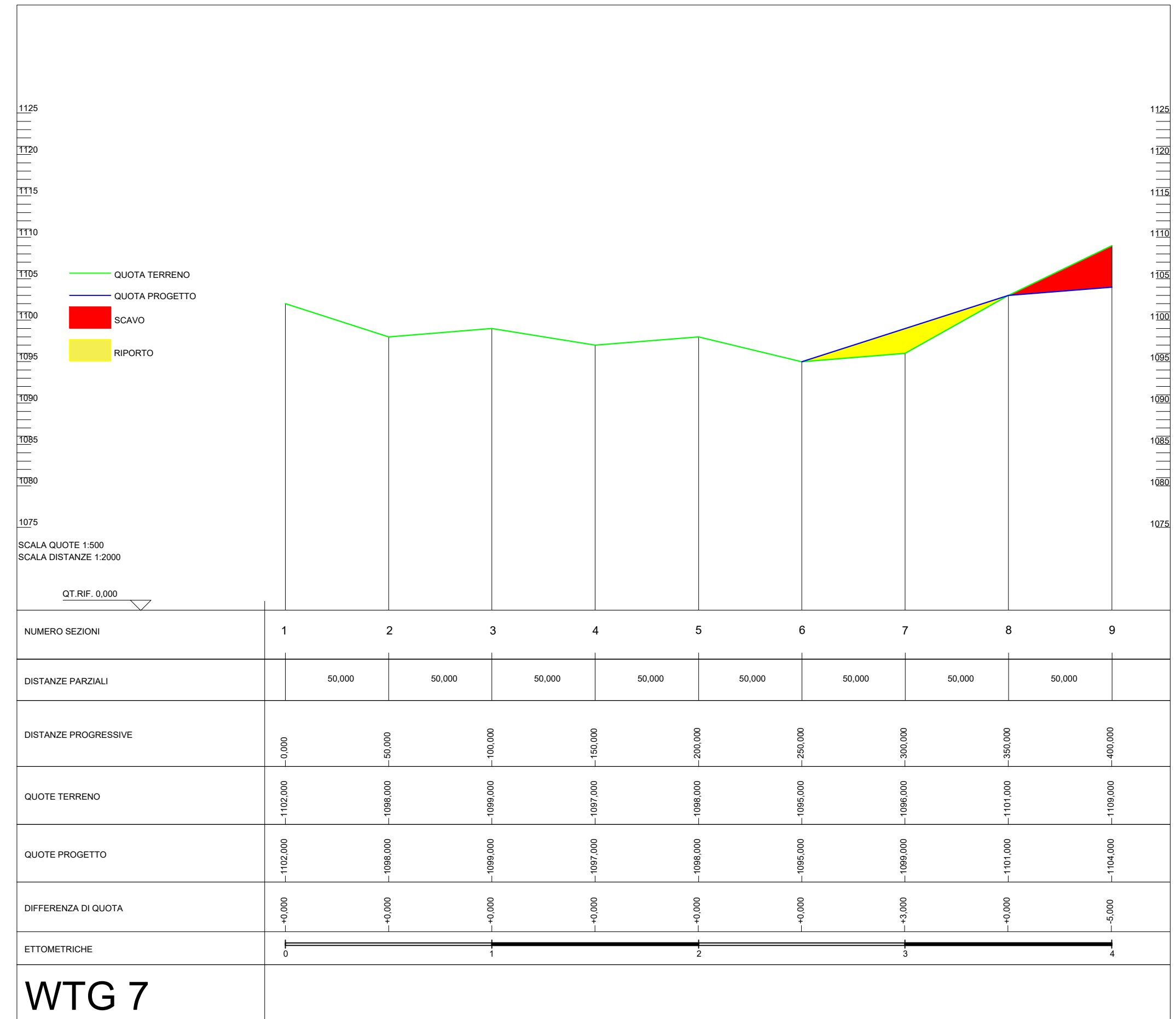
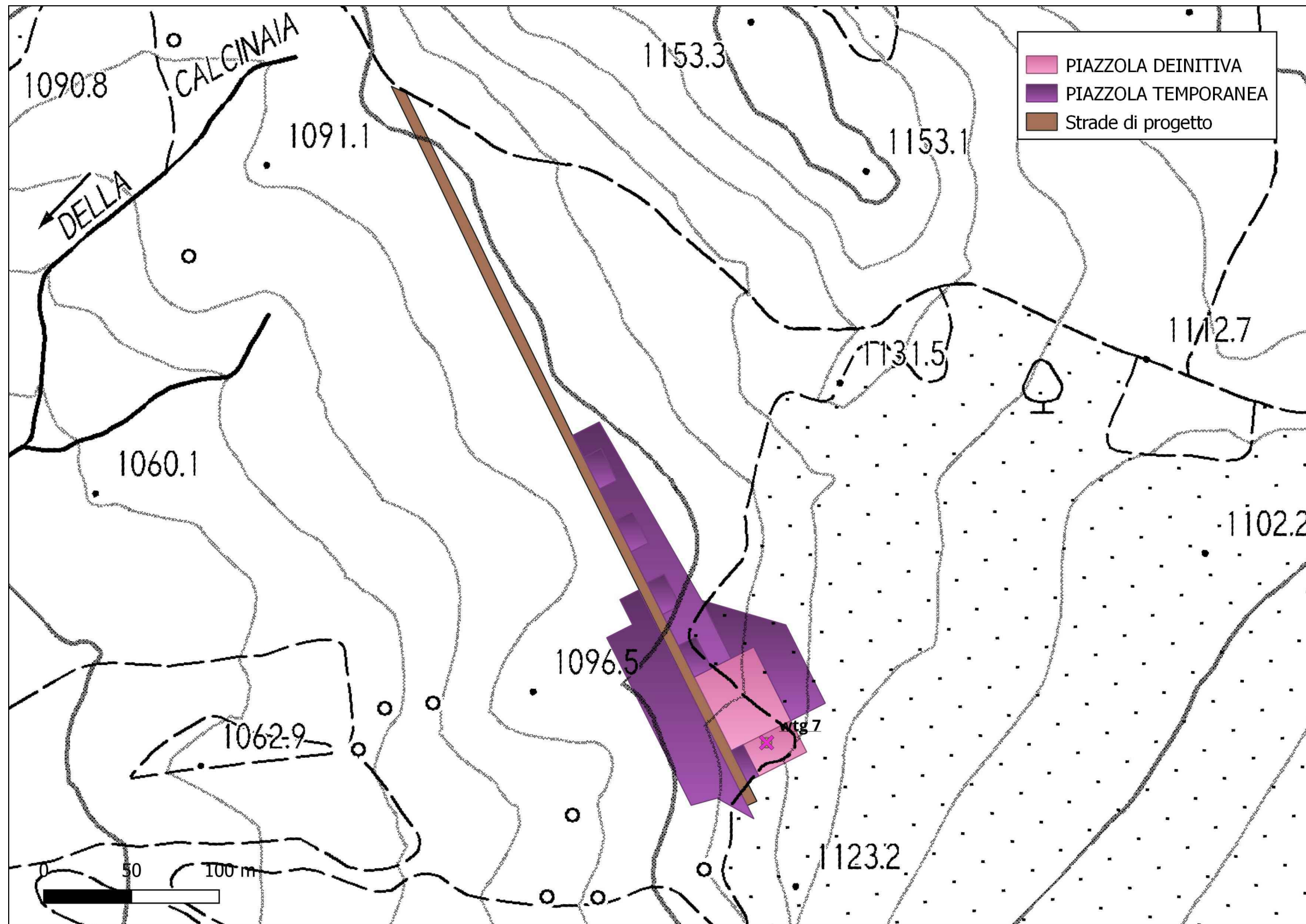
WTG 3

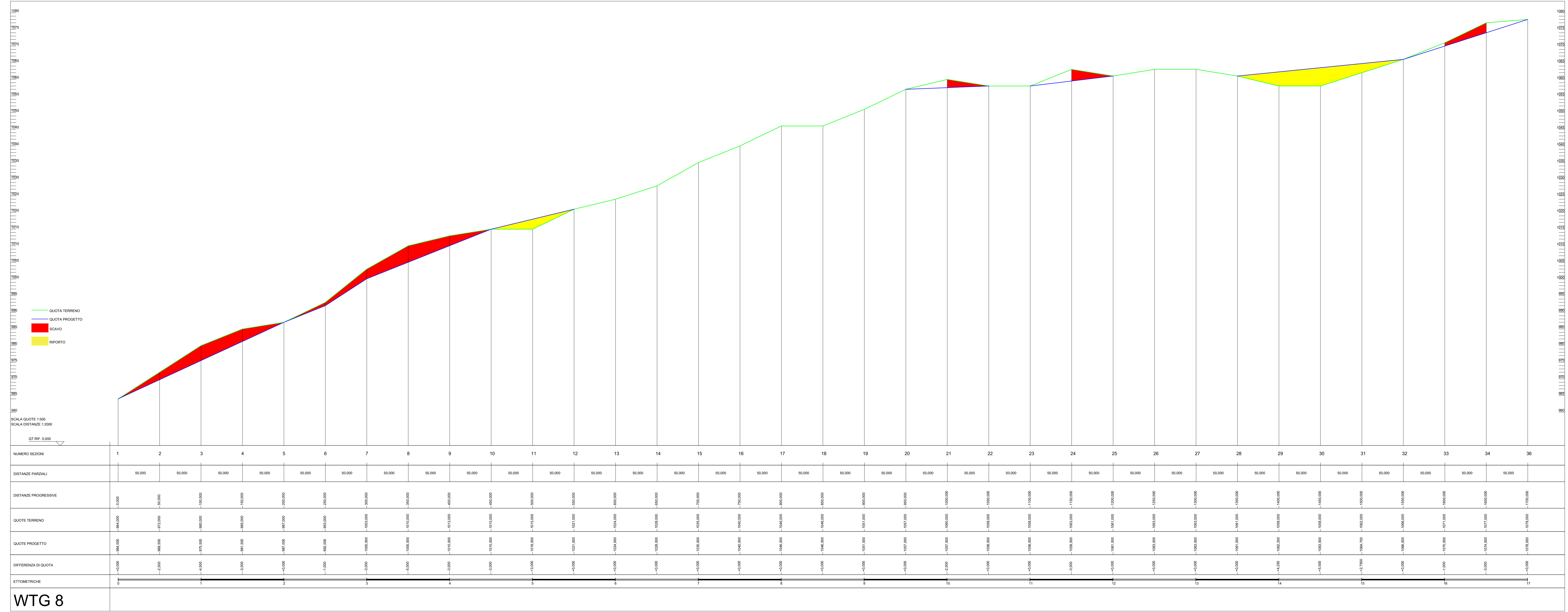
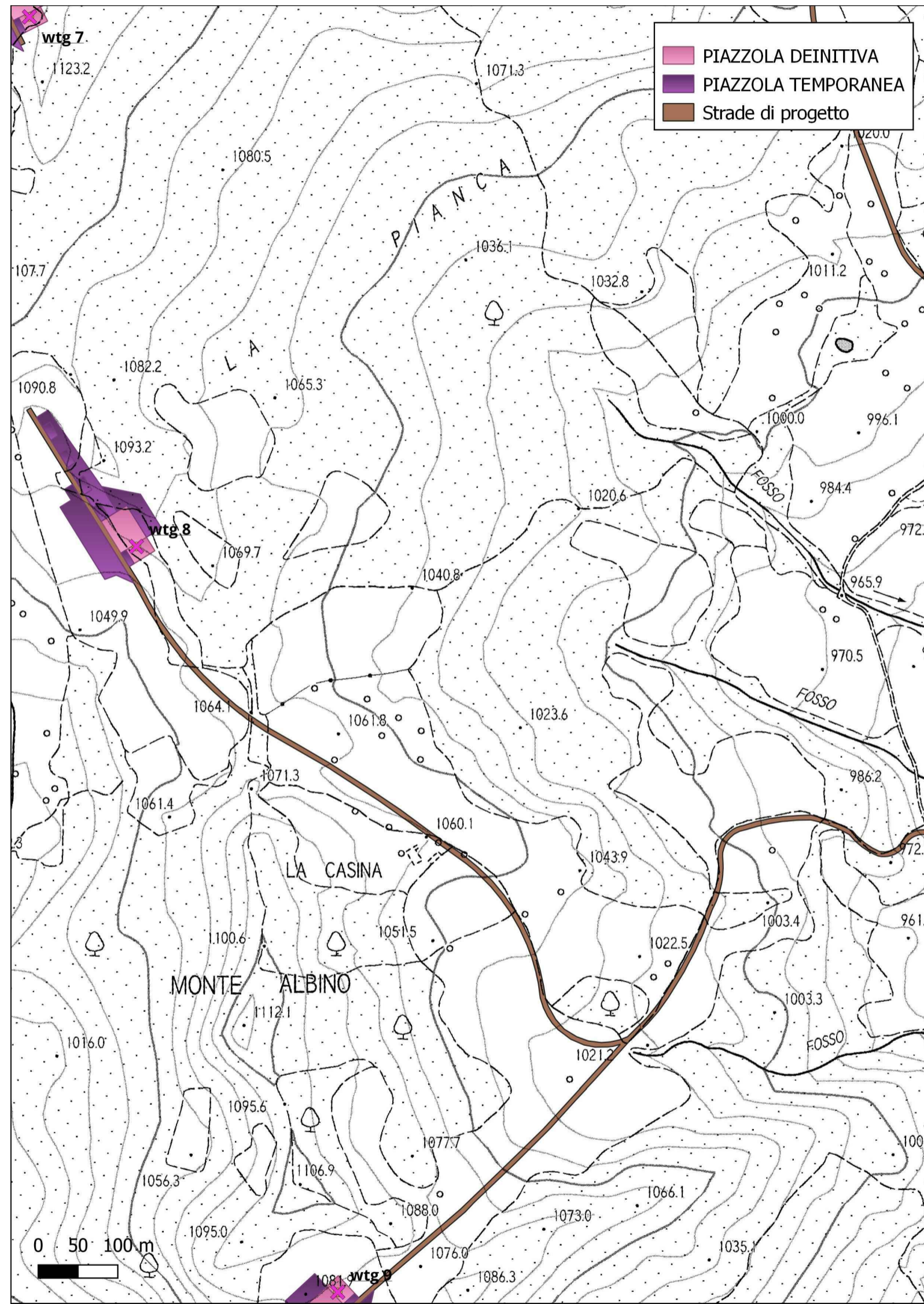




WTG 5







WTG 8

