

COMUNI DI:
SIAMAGGIORE
SOLARUSSA

PROVINCIA: ORISTANO
REGIONE: SARDEGNA

"FATTORIA SOLARE SIAMAGGIORE 1"
AGRIVOLTAICO DI TIPO ELEVATO E AVANZATO

PROGETTO DEFINITIVO

SCHEDA TECNICA MODULI FTV

| Tipo Elaborato | Codice Elaborato | Data | Scala CAD | Formato | Foglio / di | Scala |
|----------------|------------------|------------|-----------|---------|-------------|-------|
| TAV. | 2102_T.P.24 | 05/04/2023 | - | A4 | 1/3 | - |

PROPONENTE

EF AGRI Società Agricola A R.L.
Via del Brennero, 111
38121 - Trento (TN)

SVILUPPO



SET SVILUPPO s.r.l.
Corso Trieste, 19
00198 - Roma (RM)

PROGETTAZIONE

Ing. Giacomo Greco



Ing. Marco Marsico



| Rev. | Data | Descrizione | Redatto | Verificato | Approvato |
|------|------------|-----------------|-----------------|---------------|-----------------|
| 00 | 05/04/2023 | Prima Emissione | Ing. M. Marsico | Ing. G. Greco | Ing. M. Marsico |
| | | | | | |
| | | | | | |

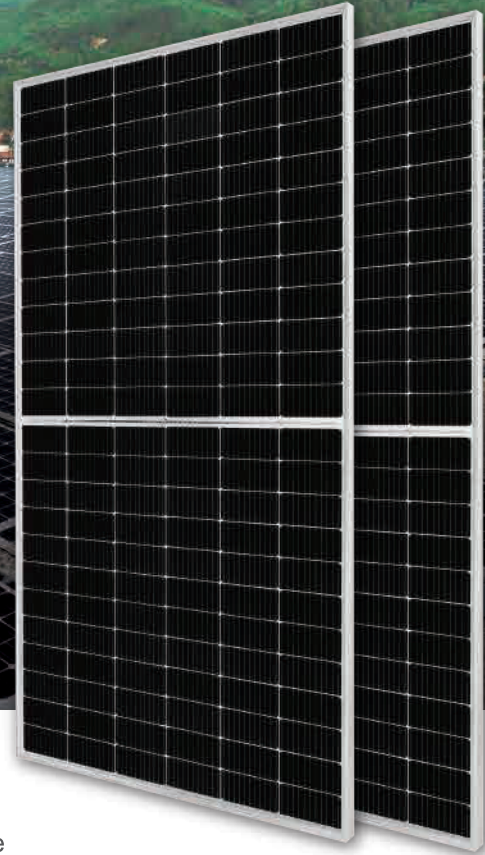
DEEP BLUE 3.0

Mono

550W MBB Bifacial Mono PERC
Half-cell Double Glass Module
JAM72D30 525-550/MB/1500V Series

Introduction

Assembled with 11BB bifacial PERCIUM cells and half-cell configuration, these double glass modules have the capability of converting the incident light from the rear side together with the front side into electricity, providing higher output power, lower temperature coefficient, less shading loss, as well as enhanced tolerance for mechanical loading.



Higher output power



More reliable, more stable power generation



Less shading effect

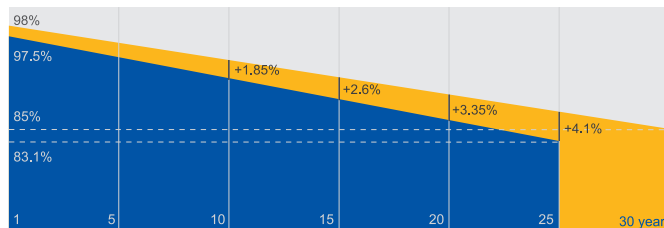


Lower temperature coefficient

Superior Warranty

- 12-year product warranty
- 30-year linear power output warranty

0.45% Annual Degradation Over 30 years



■ Bifacial double glass module linear power warranty

■ Standard module linear power warranty

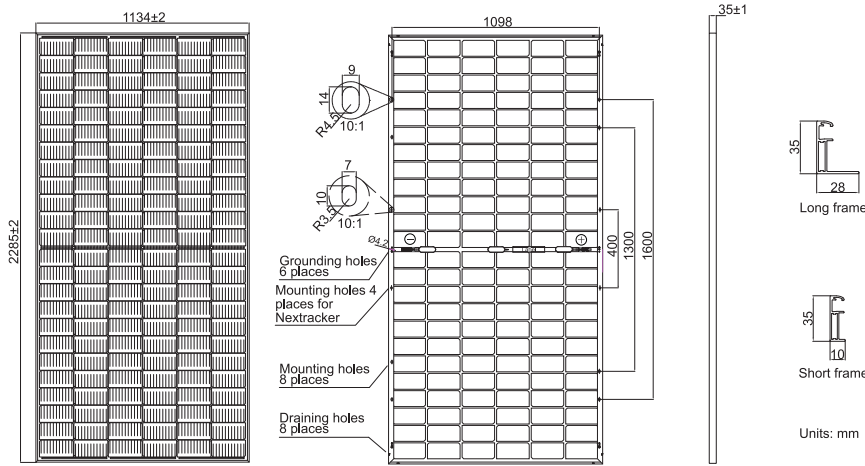
Comprehensive Certificates

- IEC 61215, IEC 61730
- ISO 9001: 2015 Quality management systems
- ISO 14001: 2015 Environmental management systems
- ISO 45001: 2018 Occupational health and safety management systems



MECHANICAL DIAGRAMS

SPECIFICATIONS



| | |
|------------------------------------|--|
| Cell | Mono |
| Weight | 31.6kg±3% |
| Dimensions | 2285±2mm×1134±2mm×35±1mm |
| Cable Cross Section Size | 4mm ² (IEC), 12 AWG(UL) |
| No. of cells | 144(6×24) |
| Junction Box | IP68, 3 diodes |
| Connector | Genuine MC4-EVO2 QC 4.10-35/45 |
| Cable Length (Including Connector) | Portrait:300mm(+)/400mm(-); Landscape:1300mm(+)/1300mm(-) |
| Front Glass/Back Glass | 2.0mm/2.0mm |
| Country of Manufacturer | China/Vietnam |

Remark: customized frame color and cable length available upon request

ELECTRICAL PARAMETERS AT STC

| TYPE | JAM72D30 -525/MB/1500V | JAM72D30 -530/MB/1500V | JAM72D30 -535/MB/1500V | JAM72D30 -540/MB/1500V | JAM72D30 -545/MB/1500V | JAM72D30 -550/MB/1500V |
|--|---|---------------------------|---------------------------|---------------------------|---------------------------|---------------------------|
| Rated Maximum Power(Pmax) [W] | 525 | 530 | 535 | 540 | 545 | 550 |
| Open Circuit Voltage(Voc) [V] | 49.15 | 49.30 | 49.45 | 49.60 | 49.75 | 49.90 |
| Maximum Power Voltage(Vmp) [V] | 41.15 | 41.31 | 41.47 | 41.64 | 41.80 | 41.96 |
| Short Circuit Current(Isc) [A] | 13.65 | 13.72 | 13.79 | 13.86 | 13.93 | 14.00 |
| Maximum Power Current(Imp) [A] | 12.76 | 12.83 | 12.90 | 12.97 | 13.04 | 13.11 |
| Module Efficiency [%] | 20.3 | 20.5 | 20.6 | 20.8 | 21.0 | 21.2 |
| Power Tolerance | 0~+5W | | | | | |
| Temperature Coefficient of Isc(α _{Isc}) | +0.045%/°C | | | | | |
| Temperature Coefficient of Voc(β _{Voc}) | -0.275%/°C | | | | | |
| Temperature Coefficient of Pmax(γ _{Pmp}) | -0.350%/°C | | | | | |
| STC | Irradiance 1000W/m ² , cell temperature 25°C, AM1.5G | | | | | |

Remark: Electrical data in this catalog do not refer to a single module and they are not part of the offer.They only serve for comparison among different module types.
Measurement tolerance at STC: Pmax ±3 %, Voc ±3% and Isc ±4%.

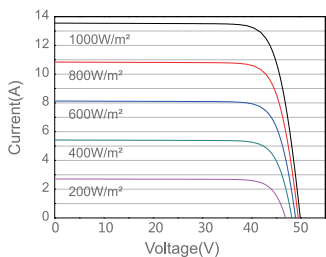
ELECTRICAL CHARACTERISTICS WITH 10% SOLAR IRRADIATION RATIO

OPERATING CONDITIONS

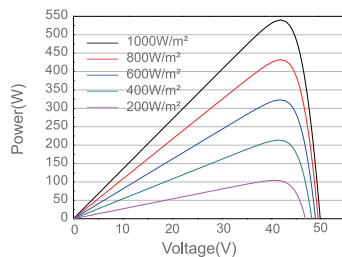
| TYPE | JAM72D30 -525/MB | JAM72D30 -530/MB | JAM72D30 -535/MB | JAM72D30 -540/MB | JAM72D30 -545/MB | JAM72D30 -550/MB | OPERATING CONDITIONS | |
|--|---------------------|---------------------|---------------------|---------------------|---------------------|---------------------|---|----------------------------|
| Rated Max Power(Pmax) [W] | 562 | 567 | 572 | 578 | 583 | 589 | Maximum System Voltage | 1500V DC |
| Open Circuit Voltage(Voc) [V] | 49.54 | 49.67 | 49.80 | 49.93 | 50.03 | 50.21 | Operating Temperature | -40°C~+85°C |
| Max Power Voltage(Vmp) [V] | 41.14 | 41.31 | 41.47 | 41.65 | 41.78 | 41.95 | Maximum Series Fuse Rating | 30A |
| Short Circuit Current(Isc) [A] | 14.61 | 14.68 | 14.76 | 14.83 | 14.91 | 14.98 | Maximum Static Load,Front* Maximum Static Load,Back* | 3600Pa, 1.5 1600Pa, 1.5 |
| Max Power Current(Imp) [A] | 13.65 | 13.73 | 13.80 | 13.88 | 13.95 | 14.03 | NOCT | 45±2°C |
| Irradiation Ratio(rear/front) | 10% | | | | | | Bifaciality** | 70%±10% |
| *For NexTracker installations, Maximum Static Load, Front is 2400Pa while Maximum Static Load, Back is 2400Pa. **Bifaciality=Pmax,rear/Rated Pmax,front | | | | | | | Fire Performance | UL Type 29 |

CHARACTERISTICS

Current-Voltage Curve JAM72D30-540/MB/1500V



Power-Voltage Curve JAM72D30-540/MB/1500V



Current-Voltage Curve JAM72D30-540/MB/1500V

