

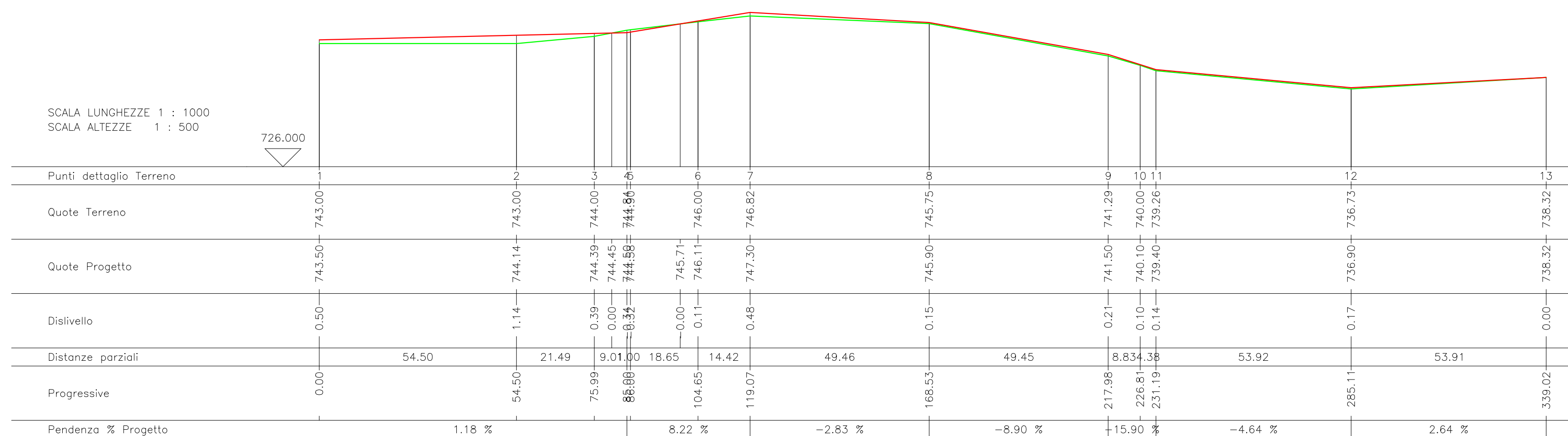
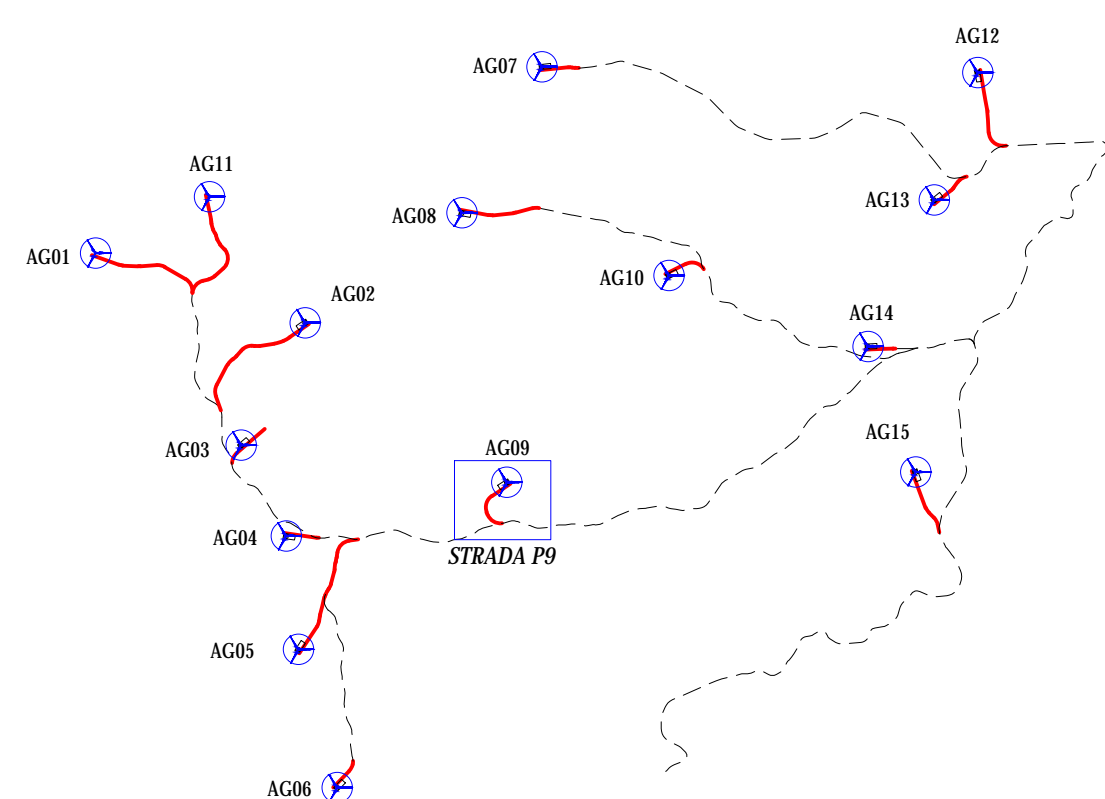
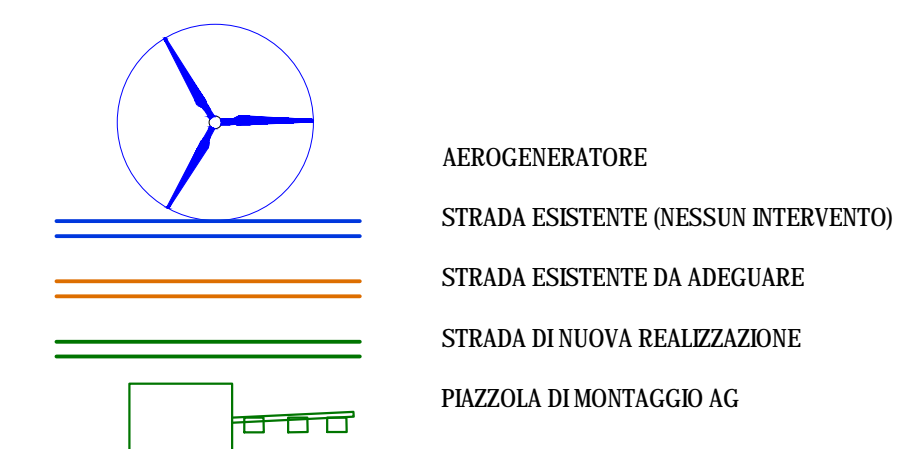
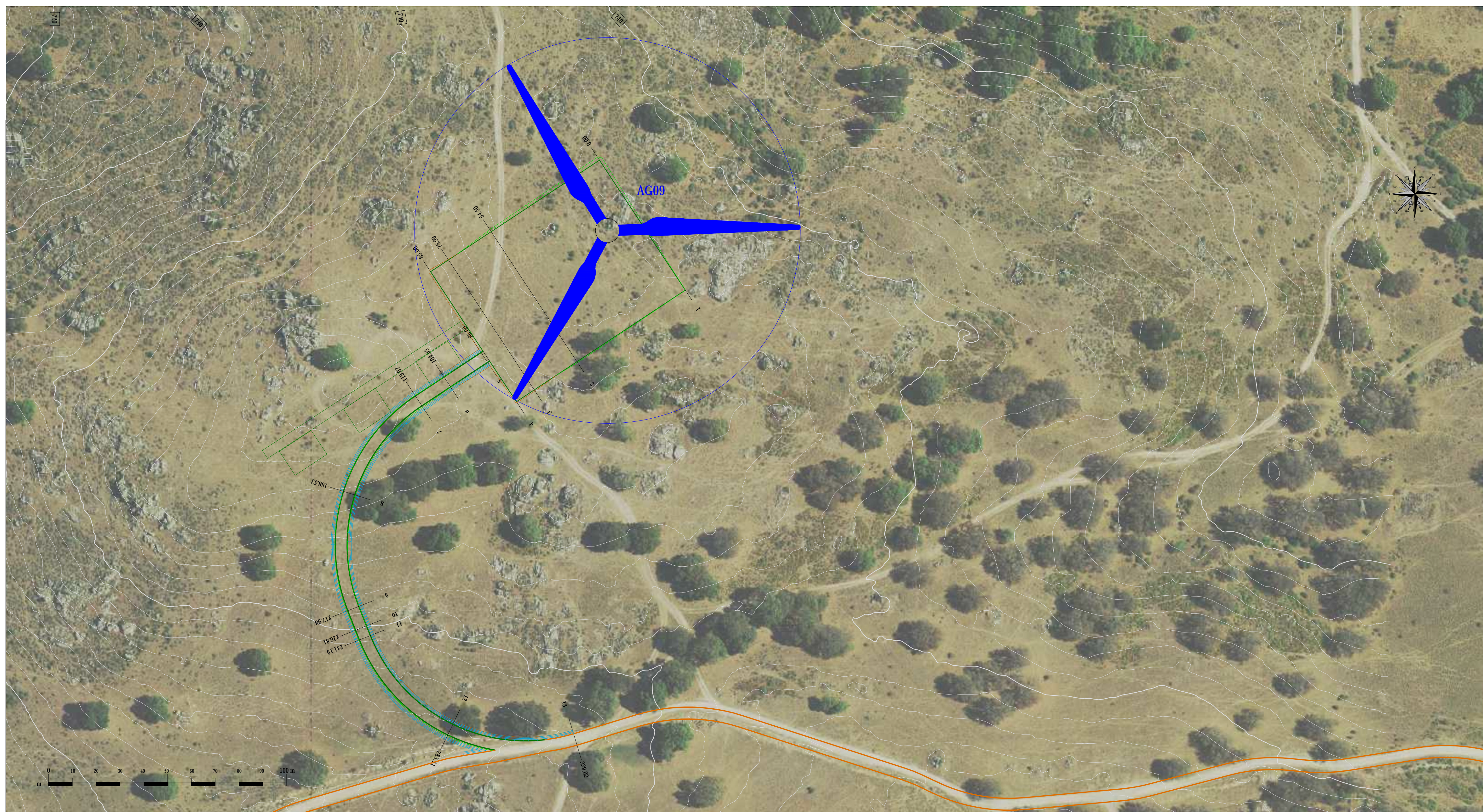


PROFILO STRADALE
 scala lunghezza: 1:1000
 scala altezza: 1:500

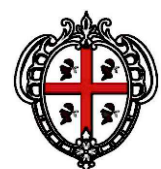
RELIEVO 
 PROGETTO 



PLANIMETRIA
 scala 1:1.000



Regione Autonoma della Sardegna



Comune di Orune



Committente:

Orune Wind Srl

Orune Wind Srl
 Via Sardegna, 40
 00187 Roma
 P.IVA.C.F. 15802491009

Titolo del Progetto:

Parco Eolico
ORUNE
 sito nel Comune di Orune (NU)

Documento:

STRADA P9
 PROFILO LONGITUDINALE E PLANIMETRIA

N. Documento:

IT-VesOru-CLP-CIV-DW-09.09



Progettista:

Ing. Sergio Lai

Studio di Ingegneria
 Viale Trieste, 58
 09037 San Gavino Monreale (SU)
 Tel. +39 070 2352042
 Mob. +39 347 1327339
 e-mail: studio@sergiolai.com

Rev	Data Revisione	Descrizione	Redatto	Controllato	Approvato
00	04.04.2023	prima emissione			