

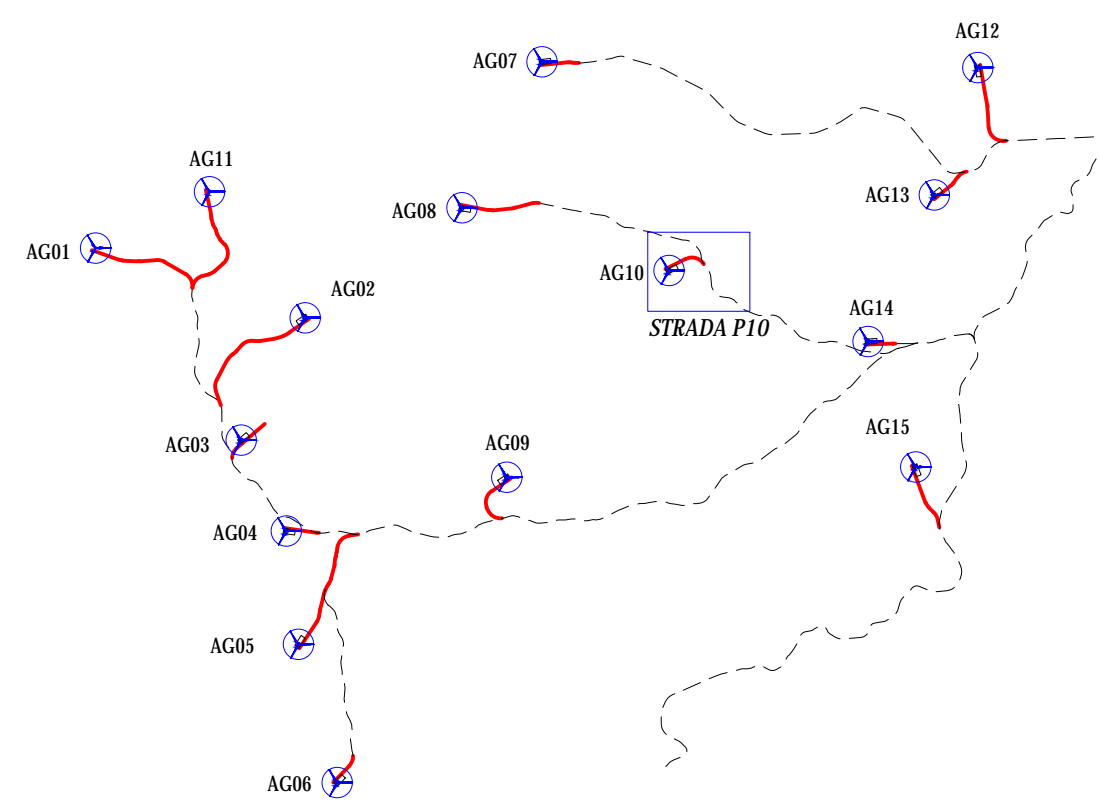
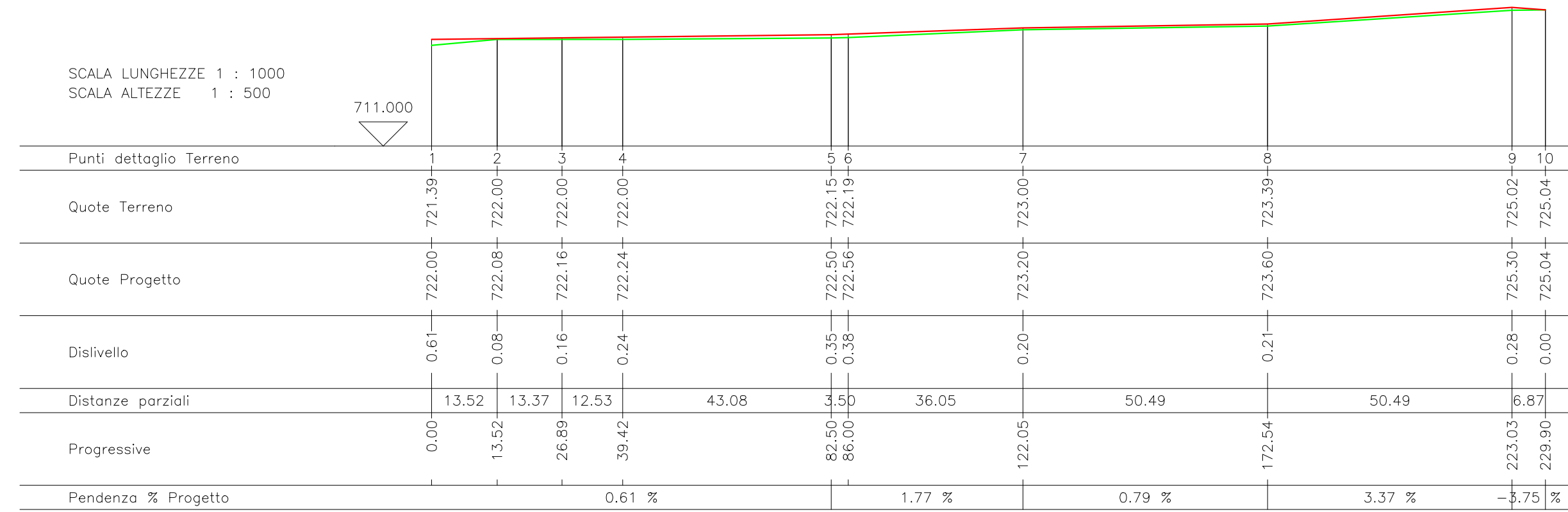
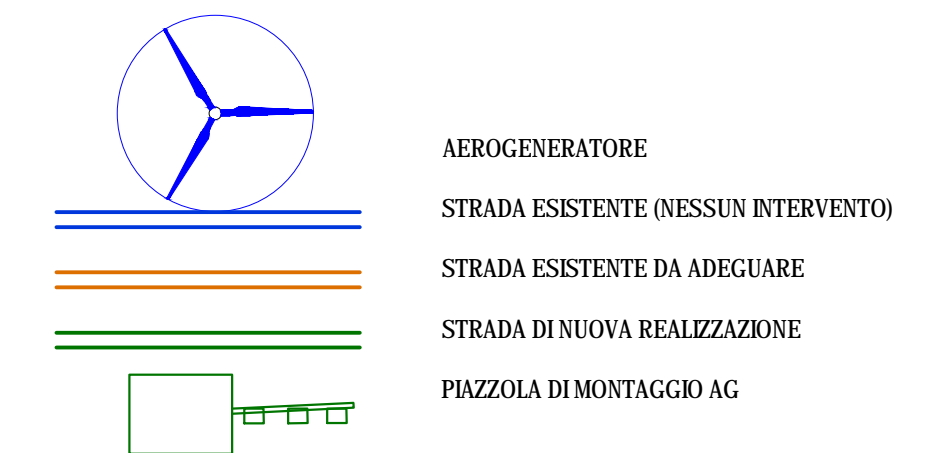


**PROFILO STRADALE**  
 scala lunghezze:1:1000  
 scala altezze 1:500

RELIEVO   
 PROGETTO 



**PLANIMETRIA**  
 scala 1:1.000



Regione Autonoma della Sardegna



Comune di Orune



Committente:

Orune Wind Srl

Orune Wind Srl  
 Via Sardegna, 40  
 00187 Roma  
 P.IVA.C.F. 15802491009

Titolo del Progetto:

Parco Eolico  
**ORUNE**  
 sito nel Comune di Orune (NU)

Documento:

STRADA P10  
 PROFILO LONGITUDINALE E PLANIMETRIA

N.Documento:

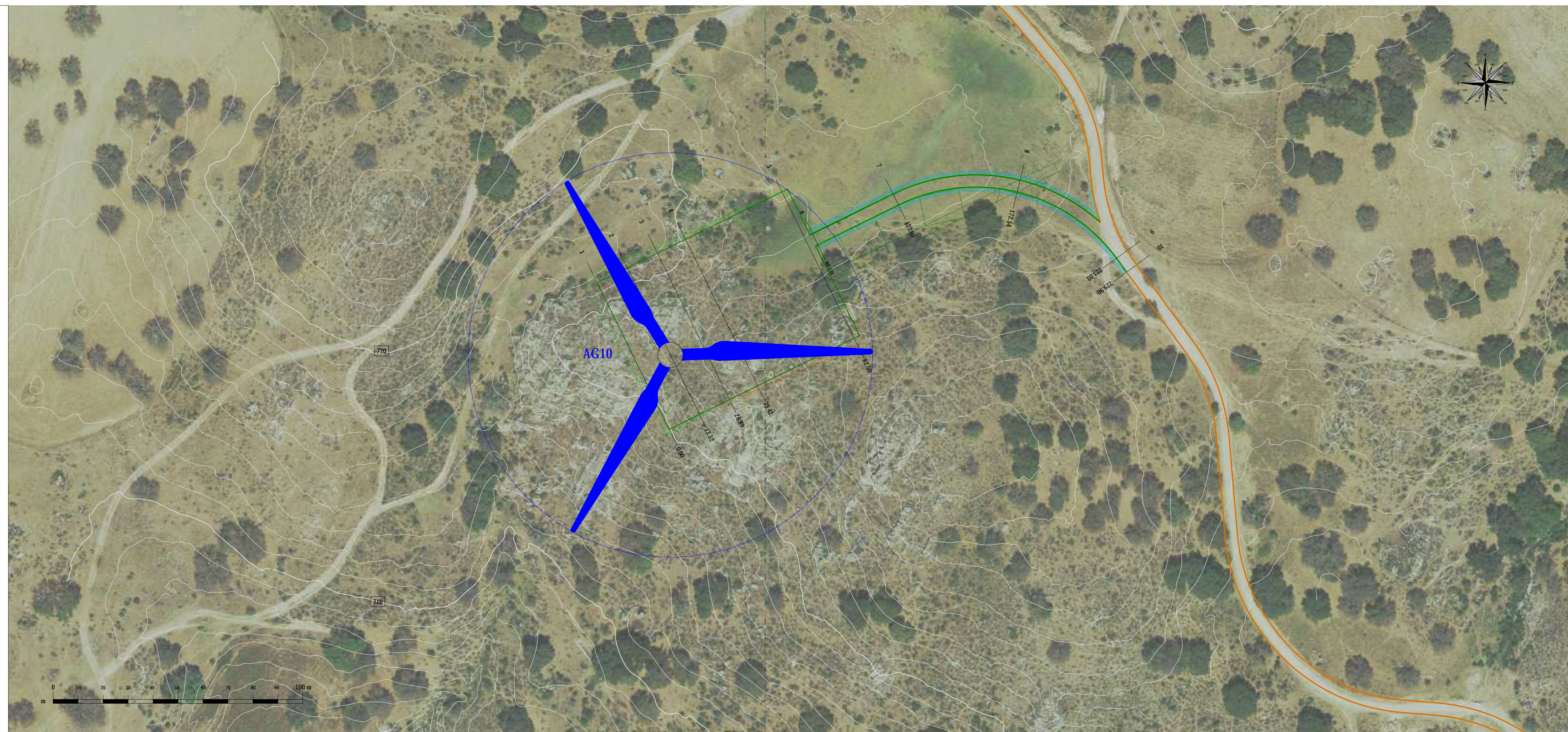
IT-VesOn-CLP-CIV-DW-09.10



Progettista:

Ing. Sergio Lai

Studio di Ingegneria  
 Viale Trieste, 58  
 09037 San Gavino Monreale (SU)  
 Tel. +39 070 2352042  
 Mob. +39 347 1327339  
 e-mail: [studio@sergiolai.com](mailto:studio@sergiolai.com)



Rev	Data Revisione	Descrizione	Redatto	Controllato	Approvato
00	04.04.2023	prima emissione			