



REGIONE  
SICILIA



PROVINCIA  
DI TRAPANI



COMUNE  
DI MARSALA



COMUNE  
DI SALEMI



COMUNE  
DI CALATAFIMI-SEGESTA

OGGETTO:

**Progetto di realizzazione di un parco eolico della potenza di 66 MW denominato  
"CE PARTANNA III"  
situato nei comuni di Marsala, Salemi e Calatafimi-Segesta  
provincia di Trapani (TP)**

ELABORATO:

**RELAZIONE DELLA VISIBILITÀ TEORICA E DEGLI  
IMPATTI CUMULATIVI**



PROPONENTE:



**AEI WIND  
PROJECT V S.R.L.**  
P.I. 16805261001  
Via Vincenzo Bellini,  
22 00198 Roma

C.F. e n. iscriz. REG. IMPR.: 16805261001  
REA: RM\_1676857  
PEC: aewind.quinta@legalmail.it

PROGETTAZIONE:

Ing. Carmen Martone  
Iscr. n.1872  
Ordine Ingegneri Potenza  
C.F MRTCMN73D56H703E



Geol. Raffaele Nardone  
Iscr. n. 243  
Ordine Geologi Basilicata  
C.F NRDRFL71H04A509H

EGM PROJECT S.R.L.  
VIA VERRASTRO 15/A  
85100- POTENZA (PZ)  
P.IVA 02094310766  
REA PZ-206983

Livello prog.	Cat. opera	N° prog.elaborato	Tipo elaborato	N° foglio/Tot fogli	Nome file	Scala	
PD	I.E.	56	R		PRT_PD_56.1_CARTA_IMPATTI_CUMULATIVI		
REV.	DATA	DESCRIZIONE			ESEGUITO	VERIFICATO	APPROVATO
00	APRILE 2023	Emissione				Ing. Carmen Martone EGM Project	Ing. Carmen Martone EGM Project

Project:

**Partanna 3**

Description:

D.M. 10-9-2010 - Linee guida per l'autorizzazione degli impianti alimentati da fonti rinnovabili.

3.2. Misure di mitigazione

Si segnalano di seguito alcune possibili misure di mitigazione:

[...]

e) si dovrà esaminare l'effetto visivo provocato da un'alta densità di aerogeneratori relativi ad un singolo parco eolico o a parchi eolici adiacenti: tale effetto deve essere in particolare esaminato e attenuato rispetto ai punti di vista o di belvedere, accessibili al pubblico, di cui all'articolo 136, comma 1, lettera d), del Codice, distanti in linea d'aria non meno di 50 volte l'altezza massima del più vicino aerogeneratore;

[...]

Altezza totale del modello di autogeneratori: 220 m.

Buffer da ogni aerogeneratore per il calcolo dell'intervisibilità teorica: 220 m\*50=11.000 m.

Licensed user:

EGM Project srl  
via Vincenzo Verrastro 15/A  
IT-85100 Potenza

Girolamo / marsilio@egmproject.it

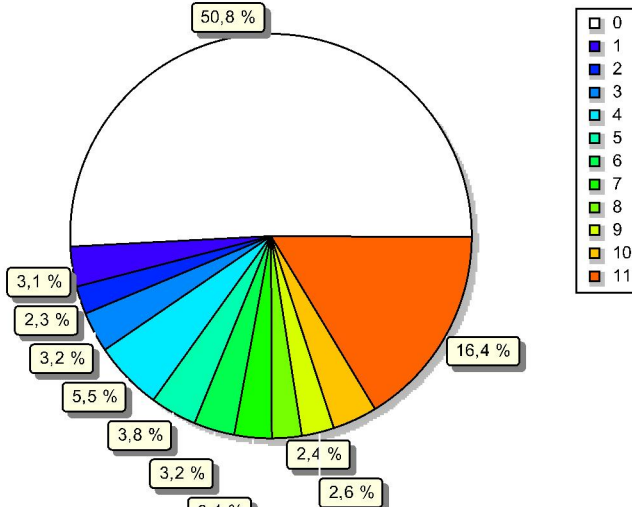
Calculated:

08/03/2023 11:40/3.6.361

## ZVI - Standard ZVI summary

Calculation: Visibilità teorica Partanna 3

Area with specific number of WTGs visible



New WTG

Scale 1:500.000

### Assumptions for ZVI calculation

WTG areas	11k Partanna 3
Calculation step	25 m
Eye height	1,5 m
Calculation area	56.624 ha
WTG Calculation height	Total height
Obstacles used in calculation	0
DHM object	Elevation Grid Data Object: Partanna 2_EMDGrid_5.wpg (21)
No area objects used in calculation	
No grid objects used in calculation	
New WTGs used in calculation	11
Existing WTGs used in calculation	0

No maximum distance to WTG

### ZVI Results

WTGs visible	Area [ha]	Area [%]
0	28.767	50,8
1	1.747	3,1
2	1.330	2,3
3	1.808	3,2
4	3.132	5,5
5	2.150	3,8
6	1.825	3,2
7	1.750	3,1
8	1.354	2,4
9	1.477	2,6
10	2.021	3,6
11	9.264	16,4

### WTGs

Valid	Manufact.	Type-generator	Power, rated [kW]	Rotor diameter [m]	Hub height [m]	Easting	Northing	Z [m]
1	Yes	Siemens Gamesa SG 6.0-170-6.200	6.200	170,0	135,0	309.569	4.190.041	305,0
2	Yes	Siemens Gamesa SG 6.0-170-6.200	6.200	170,0	135,0	310.710	4.190.546	299,2
3	Yes	Siemens Gamesa SG 6.0-170-6.200	6.200	170,0	135,0	310.213	4.188.120	256,6
4	Yes	Siemens Gamesa SG 6.0-170-6.200	6.200	170,0	135,0	310.770	4.188.566	251,1
5	Yes	Siemens Gamesa SG 6.0-170-6.200	6.200	170,0	135,0	311.782	4.188.410	241,6
6	Yes	Siemens Gamesa SG 6.0-170-6.200	6.200	170,0	135,0	312.414	4.189.360	250,0
7	Yes	Siemens Gamesa SG 6.0-170-6.200	6.200	170,0	135,0	313.714	4.189.700	225,0
8	Yes	Siemens Gamesa SG 6.0-170-6.200	6.200	170,0	135,0	314.472	4.190.942	249,7
9	Yes	Siemens Gamesa SG 6.0-170-6.200	6.200	170,0	135,0	315.121	4.191.329	276,5
10	Yes	Siemens Gamesa SG 6.0-170-6.200	6.200	170,0	135,0	314.423	4.192.089	274,6
11	Yes	Siemens Gamesa SG 6.0-170-6.200	6.200	170,0	135,0	314.801	4.193.000	253,9

Project:

Partanna 3

Description:

D.M. 10-9-2010 - Linee guida per l'autorizzazione degli impianti alimentati da fonti rinnovabili.

3.2. Misure di mitigazione

Si segnalano di seguito alcune possibili misure di mitigazione:

[...]

e) si dovrà esaminare l'effetto visivo provocato da un'alta densità di aerogeneratori relativi ad un singolo parco eolico o a parchi eolici adiacenti: tale effetto deve essere in particolare esaminato e attenuato rispetto ai punti di vista o di belvedere, accessibili al pubblico, di cui all'articolo 136, comma 1, lettera d), del Codice, distanti in linea d'aria non meno di 50 volte l'altezza massima del più vicino aerogeneratore.

[...]

Altezza totale del modello di autogeneratori: 220 m.

Buffer da ogni aerogeneratore per il calcolo dell'intervisibilità teorica: 220 m\*50=11.000 m.

Licensed user:

EGM Project srl

via Vincenzo Verrastro 15/A

IT-85100 Potenza

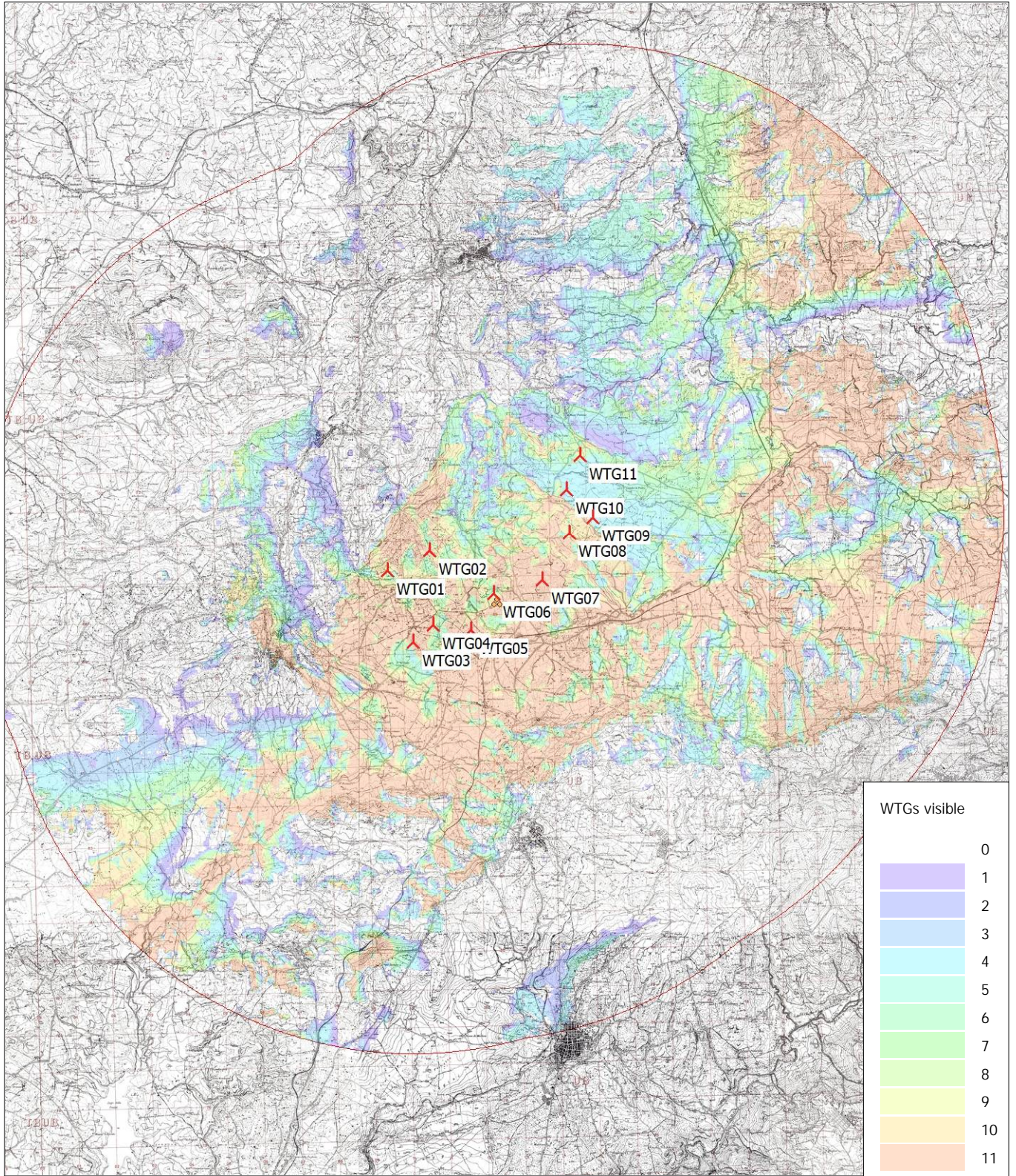
Girolamo / marsilio@egmproject.it

Calculated:

08/03/2023 11:40/3.6.361

## ZVI - Map Standard ZVI summary

Calculation: Visibilità teorica Partanna 3



0 2,5 5 7,5 10km

Map: IGM maps 1:25000, Print scale 1:150.000, Map center UTM (north)-WGS84 Zone: 33 East: 313.092 North: 4.189.785

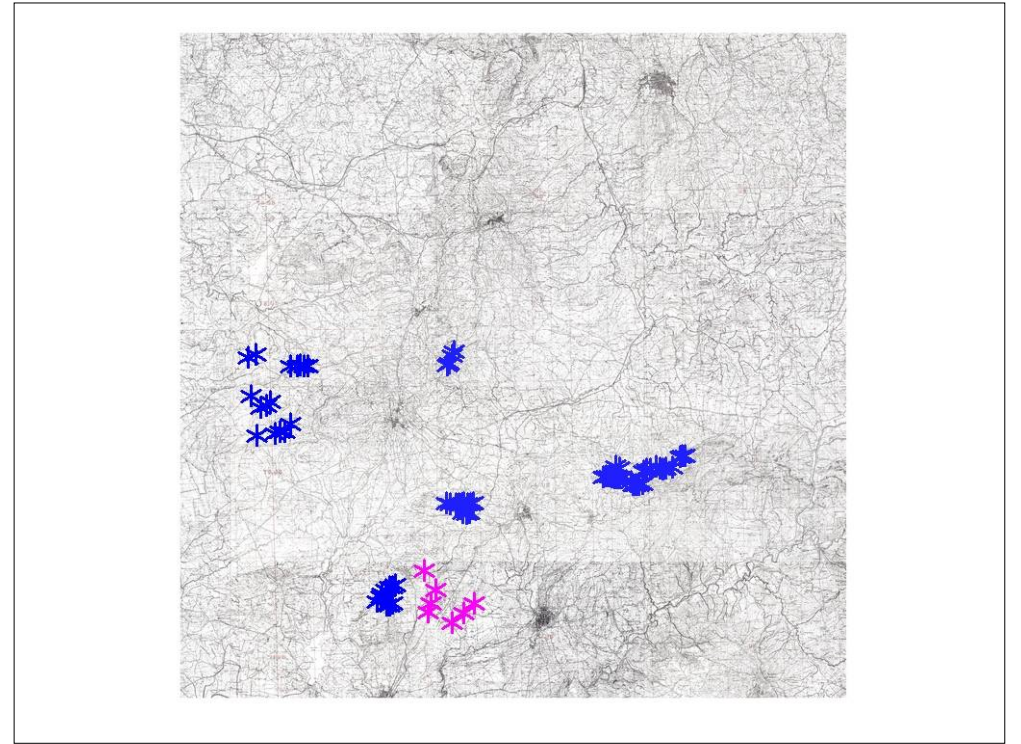
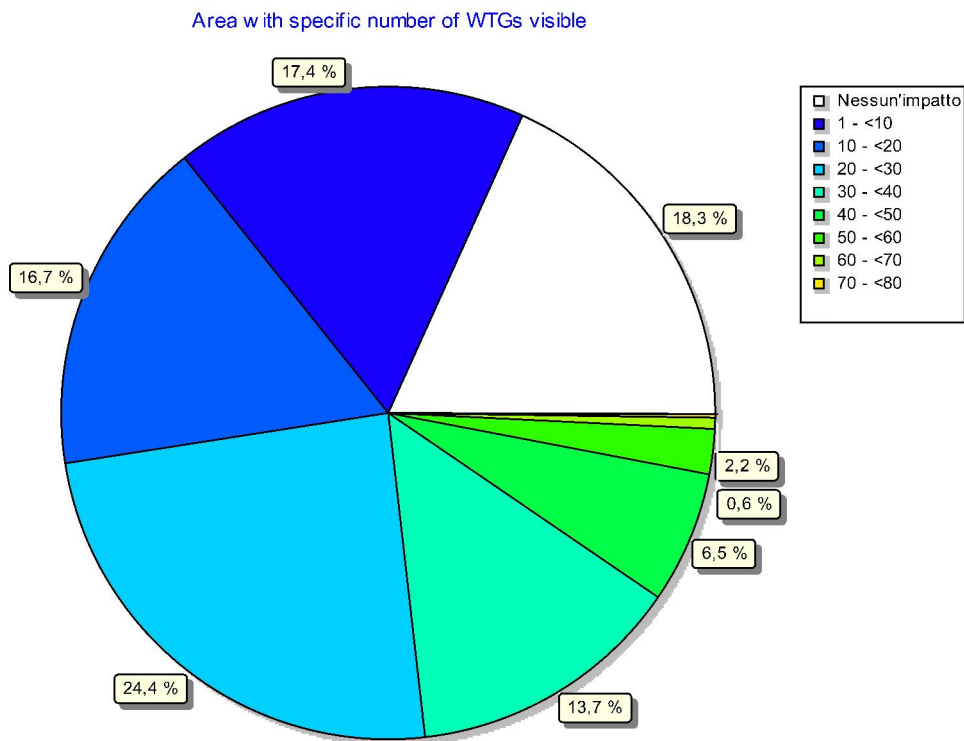
▲ New WTG

⚙️ WTG area

Grid step: 25 m - Eye height: 1,5 m - Calculation height: Total height

## ZVI - Standard ZVI summary

Calculation: Impatto cumulativo Partanna 3 - Stato di fatto



Scale 1:400.000

\* Impianti esistenti \* Impianti in fase di autorizzazione \* Impianti autorizzati

### Assumptions for ZVI calculation

WTG areas	11k Partanna 3
Calculation step	25 m
Eye height	1,7 m
Calculation area	56.624 ha
WTG Calculation height	Total height
Obstacles used in calculation	0
DHM object	Elevation Grid Data Object: Partanna 2_EMDGrid_5.wpg (21)
No area objects used in calculation	
No grid objects used in calculation	
New WTGs used in calculation	0
Existing WTGs used in calculation	76

No maximum distance to WTG

### ZVI Results

WTGs visible	Area [ha]	Area [%]
0	10.383	18,3
1	518	0,9
2	787	1,4
3	607	1,1
4	3.126	5,5
5	733	1,3
6	892	1,6
7	1.221	2,2
8	979	1,7
9	991	1,7
10	1.096	1,9
11	1.430	2,5
12	759	1,3
13	1.037	1,8
14	797	1,4
15	739	1,3
16	784	1,4
17	1.066	1,9
18	830	1,5
19	891	1,6
20	979	1,7
21	949	1,7
22	1.150	2,0
23	1.083	1,9
24	1.108	2,0
25	1.175	2,1
25-76	21.692	38,3

### WTGs

Valid	Manufact.	Type-generator	Power, rated [kW]	Rotor diameter [m]	Hub height [m]	Easting	Northing	Z [m]
1	Yes	Siemens Gamesa SG 6.0-170-6.200	6.200	170,0	115,0	307.864	4.179.948	279,1
2	Yes	Siemens Gamesa SG 6.0-170-6.200	6.200	170,0	115,0	308.440	4.178.920	303,0
3	Yes	Siemens Gamesa SG 6.0-170-6.200	6.200	170,0	115,0	308.200	4.178.220	276,6
4	Yes	Siemens Gamesa SG 6.0-170-6.200	6.200	170,0	115,0	308.016	4.177.752	252,4
5	Yes	VESTAS V150-5.6-5.600	5.600	150,0	105,0	309.270	4.177.171	249,7
6	Yes	VESTAS V150-5.6-5.600	5.600	150,0	105,0	309.906	4.177.650	233,9
7	Yes	VESTAS V150-5.6-5.600	5.600	150,0	105,0	310.493	4.178.157	256,4
8	Yes	GAMESA G58/850-850	850	58,0	55,0	309.940	4.183.416	327,9
9	Yes	GAMESA G58/850-850	850	58,0	55,0	310.074	4.183.439	320,8
10	Yes	GAMESA G58/850-850	850	58,0	55,0	310.245	4.183.425	339,7
11	Yes	GAMESA G58/850-850	850	58,0	55,0	310.409	4.183.422	325,7
12	Yes	GAMESA G58/850-850	850	58,0	55,0	310.562	4.183.426	321,4
13	Yes	GAMESA G58/850-850	850	58,0	55,0	317.489	4.184.666	571,0
14	Yes	GAMESA G58/850-850	850	58,0	55,0	317.646	4.184.717	559,0
15	Yes	GAMESA G58/850-850	850	58,0	55,0	317.825	4.184.702	574,9
16	Yes	GAMESA G58/850-850	850	58,0	55,0	317.959	4.184.638	600,0
17	Yes	GAMESA G58/850-850	850	58,0	55,0	318.185	4.185.217	585,0
18	Yes	GAMESA G58/850-850	850	58,0	55,0	318.142	4.184.616	618,1
19	Yes	GAMESA G58/850-850	850	58,0	55,0	318.377	4.185.123	602,1
20	Yes	GAMESA G58/850-850	850	58,0	55,0	318.287	4.184.577	653,9
21	Yes	GAMESA G58/850-850	850	58,0	55,0	318.378	4.184.599	663,9
22	Yes	GAMESA G58/850-850	850	58,0	55,0	318.742	4.184.419	583,2
23	Yes	GAMESA G58/850-850	850	58,0	55,0	318.975	4.184.373	582,7
24	Yes	GAMESA G58/850-850	850	58,0	55,0	319.076	4.184.218	602,9
25	Yes	GAMESA G58/850-850	850	58,0	55,0	319.251	4.184.234	576,6
26	Yes	GAMESA G58/850-850	850	58,0	55,0	319.418	4.184.229	575,0
27	Yes	GAMESA G58/850-850	850	58,0	55,0	319.689	4.184.920	538,0
28	Yes	GAMESA G58/850-850	850	58,0	55,0	319.610	4.184.259	582,5
29	Yes	GAMESA G58/850-850	850	58,0	55,0	319.825	4.185.017	564,7
30	Yes	GAMESA G58/850-850	850	58,0	55,0	320.015	4.185.024	578,2

To be continued on next page...

## ZVI - Standard ZVI summary

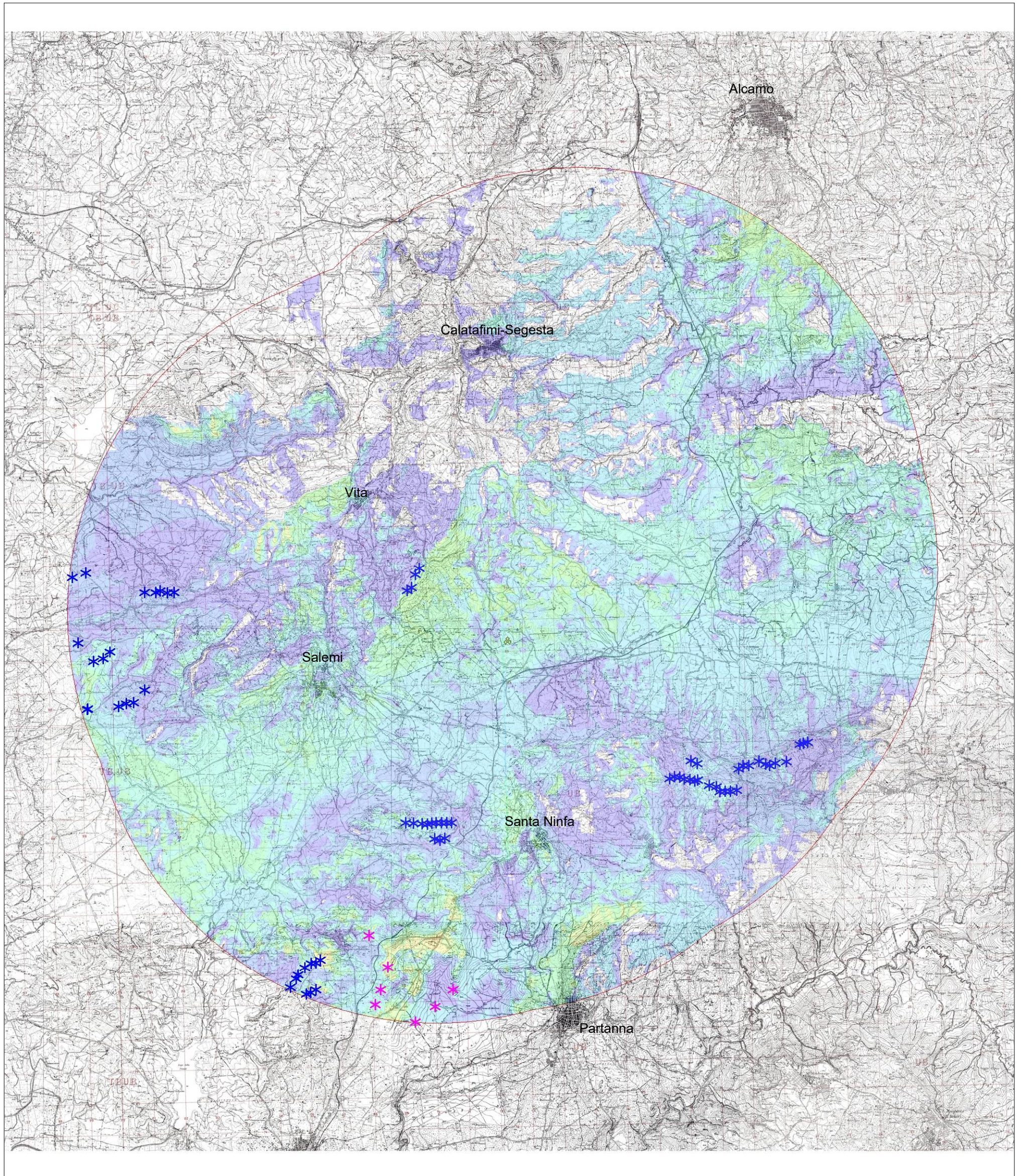
### Calculation: Impatto cumulativo Partanna 3 - Stato di fatto

...continued from previous page

	Valid	Manufact.	Type-generator	Power, rated [kW]	Rotor diameter [m]	Hub height [m]	Easting	Northing	Z [m]
31	Yes	GAMESA	G58/850-850	850	58,0	55,0	320.333	4.185.146	571,9
32	Yes	GAMESA	G58/850-850	850	58,0	55,0	320.551	4.185.052	572,2
33	Yes	GAMESA	G58/850-850	850	58,0	55,0	320.670	4.185.011	569,5
34	Yes	GAMESA	G58/850-850	850	58,0	55,0	320.849	4.185.075	601,1
35	Yes	GAMESA	G58/850-850	850	58,0	55,0	321.207	4.185.115	584,1
36	Yes	GAMESA	G58/850-850	850	58,0	55,0	321.642	4.185.657	550,9
37	Yes	GAMESA	G58/850-850	850	58,0	55,0	321.753	4.185.674	550,1
38	Yes	GAMESA	G58/850-850	850	58,0	55,0	321.890	4.185.705	554,6
39	Yes	GAMESA	G58/850-850	850	58,0	55,0	309.113	4.183.457	295,6
40	Yes	GAMESA	G58/850-850	850	58,0	55,0	309.350	4.183.435	282,4
41	Yes	GAMESA	G58/850-850	850	58,0	55,0	309.629	4.183.411	305,1
42	Yes	GAMESA	G58/850-850	850	58,0	55,0	309.806	4.183.399	319,5
43	Yes	GAMESA	G58/850-850	850	58,0	55,0	310.012	4.182.927	296,8
44	Yes	GAMESA	G58/850-850	850	58,0	55,0	310.180	4.182.889	300,5
45	Yes	GAMESA	G58/850-850	850	58,0	55,0	310.338	4.182.937	295,0
46	Yes	Siemens Gamesa	SG 6.0-170-6.200	6.200	170,0	115,0	309.726	4.191.467	503,0
47	Yes	Siemens Gamesa	SG 6.0-170-6.200	6.200	170,0	115,0	309.327	4.190.775	534,4
48	Yes	Siemens Gamesa	SG 6.0-170-6.200	6.200	170,0	115,0	309.461	4.190.869	521,0
49	Yes	Siemens Gamesa	SG 6.0-170-6.200	6.200	170,0	115,0	309.601	4.191.281	503,9
50	No	VESTAS	V52-850	850	52,0	49,0	306.313	4.179.204	278,9
51	No	VESTAS	V52-850	850	52,0	49,0	306.168	4.179.114	275,7
52	No	VESTAS	V52-850	850	52,0	49,0	306.021	4.179.103	270,8
53	No	VESTAS	V52-850	850	52,0	49,0	305.816	4.178.967	271,0
54	No	VESTAS	V52-850	850	52,0	49,0	305.597	4.178.747	248,7
55	No	VESTAS	V52-850	850	52,0	49,0	305.526	4.178.627	249,7
56	No	VESTAS	V52-850	850	52,0	49,0	305.341	4.178.355	243,4
57	No	VESTAS	V52-850	850	52,0	49,0	306.143	4.178.262	281,4
58	No	VESTAS	V52-850	850	52,0	49,0	305.978	4.178.171	276,3
59	No	VESTAS	V52-850	850	52,0	49,0	305.847	4.178.137	275,0
60	No	VESTAS	V52-850	850	52,0	49,0	301.026	4.190.913	359,6
61	No	VESTAS	V52-850	850	52,0	49,0	301.379	4.190.910	390,0
62	No	VESTAS	V52-850	850	52,0	49,0	301.746	4.190.892	418,6
63	No	VESTAS	V52-850	850	52,0	49,0	301.954	4.190.888	406,4
64	No	VESTAS	V52-850	850	52,0	49,0	301.523	4.190.952	400,0
65	Yes	VESTAS	V90-2.000	2.000	90,0	80,0	298.883	4.189.384	300,1
66	Yes	VESTAS	V90-2.000	2.000	90,0	80,0	299.349	4.188.777	307,0
67	Yes	VESTAS	V90-2.000	2.000	90,0	80,0	299.658	4.188.862	319,7
68	Yes	VESTAS	V90-2.000	2.000	90,0	80,0	299.876	4.189.073	326,0
69	Yes	VESTAS	V90-2.000	2.000	90,0	80,0	300.950	4.187.852	277,0
70	Yes	VESTAS	V90-2.000	2.000	90,0	80,0	300.596	4.187.459	278,1
71	Yes	VESTAS	V90-2.000	2.000	90,0	80,0	300.357	4.187.439	262,2
72	Yes	VESTAS	V90-2.000	2.000	90,0	80,0	300.119	4.187.351	250,6
73	Yes	VESTAS	V90-2.000	2.000	90,0	80,0	299.123	4.187.282	275,3
74	Yes	VESTAS	V90-2.000	2.000	90,0	80,0	299.138	4.187.293	275,0
75	Yes	VESTAS	V90-2.000	2.000	90,0	80,0	298.748	4.191.447	278,2
76	Yes	VESTAS	V90-2.000	2.000	90,0	80,0	299.187	4.191.570	255,5

## ZVI - Map Standard ZVI summary

Calculation: Impatto cumulativo Partanna 3 - Stato di fatto



0 2,5 5 7,5 10km

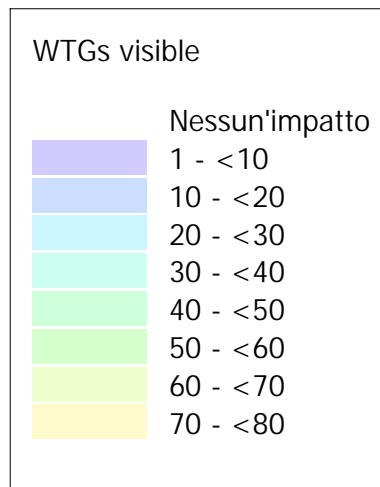
Map: IGM maps 1:25000 , Print scale 1:120.000, Map center UTM (north)-WGS84 Zone: 33 East: 313.000 North: 4.190.994

\* Impianti esistenti \* Impianti in fase di autorizzazione \* Impianti autorizzati

Grid step: 25 m - Eye height: 1,7 m - Calculation height: Total height

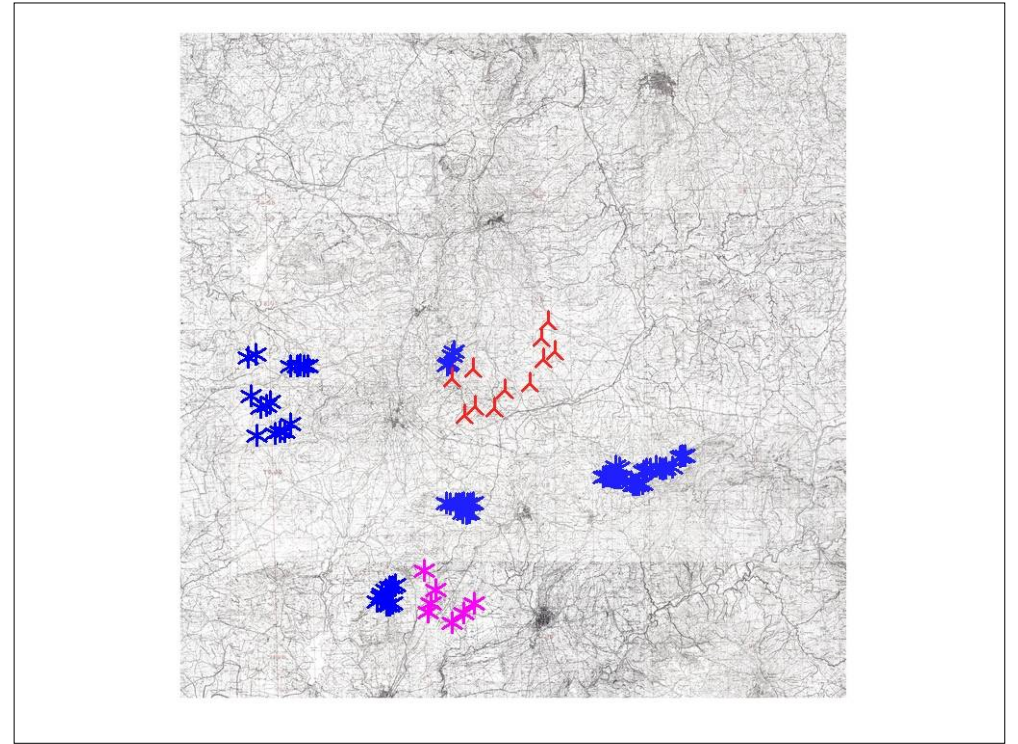
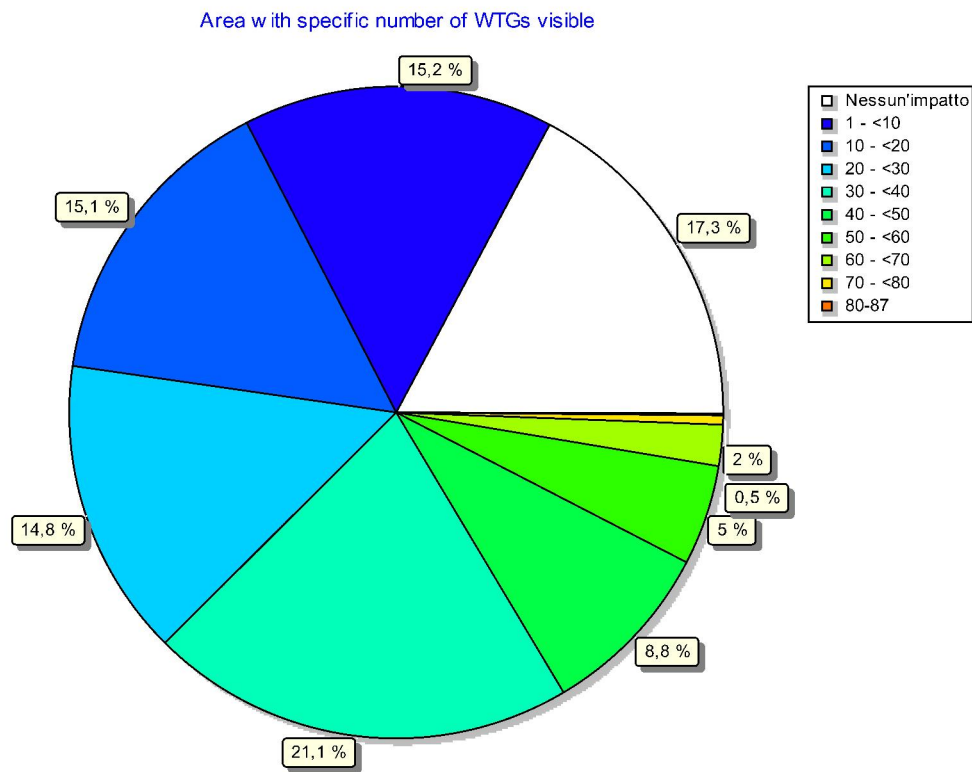
## ZVI - Map Standard ZVI summary

Calculation: Impatto cumulativo Partanna 3 - Stato di fatto



## ZVI - Standard ZVI summary

Calculation: Impatto cumulativo Partanna 3 - Stato di progetto



Scale 1:400.000

▲ WTG in progetto \* Impianti esistenti \* Impianti in fase di autorizzazione \* Impianti autorizzati

### Assumptions for ZVI calculation

WTG areas	11k Partanna 3
Calculation step	25 m
Eye height	1,7 m
Calculation area	56.624 ha
WTG Calculation height	Total height
Obstacles used in calculation	0
DHM object	Elevation Grid Data Object: Partanna 2_EMDGrid_5.wpg (21)
No area objects used in calculation	
No grid objects used in calculation	
New WTGs used in calculation	11
Existing WTGs used in calculation	76

No maximum distance to WTG

### ZVI Results

WTGs visible	Area [ha]	Area [%]
0	9.813	17,3
1	649	1,1
2	801	1,4
3	649	1,1
4	1.725	3,0
5	826	1,5
6	935	1,7
7	1.179	2,1
8	990	1,7
9	865	1,5
10	987	1,7
11	1.409	2,5
12	727	1,3
13	947	1,7
14	717	1,3
15	939	1,7
16	651	1,1
17	938	1,7
18	600	1,1
19	656	1,2
20	729	1,3
21	713	1,3
22	653	1,2
23	712	1,3
24	785	1,4
25	727	1,3
25-87	26.029	46,0

### WTGs

Valid	Manufact.	Type-generator	Power, rated [kW]	Rotor diameter [m]	Hub height [m]	Easting	Northing	Z [m]
1	Yes	Siemens Gamesa SG 6.0-170-6.200	6.200	170,0	135,0	309.569	4.190.041	305,0
2	Yes	Siemens Gamesa SG 6.0-170-6.200	6.200	170,0	135,0	310.710	4.190.546	299,2
3	Yes	Siemens Gamesa SG 6.0-170-6.200	6.200	170,0	135,0	310.213	4.188.120	256,6
4	Yes	Siemens Gamesa SG 6.0-170-6.200	6.200	170,0	135,0	310.770	4.188.566	251,1
5	Yes	Siemens Gamesa SG 6.0-170-6.200	6.200	170,0	135,0	311.782	4.188.410	241,6
6	Yes	Siemens Gamesa SG 6.0-170-6.200	6.200	170,0	135,0	312.414	4.189.360	250,0
7	Yes	Siemens Gamesa SG 6.0-170-6.200	6.200	170,0	135,0	313.714	4.189.700	225,0
8	Yes	Siemens Gamesa SG 6.0-170-6.200	6.200	170,0	135,0	314.472	4.190.942	249,7
9	Yes	Siemens Gamesa SG 6.0-170-6.200	6.200	170,0	135,0	315.121	4.191.329	276,5
10	Yes	Siemens Gamesa SG 6.0-170-6.200	6.200	170,0	135,0	314.423	4.192.089	274,6
11	Yes	Siemens Gamesa SG 6.0-170-6.200	6.200	170,0	135,0	314.801	4.193.000	253,9
12	Yes	Siemens Gamesa SG 6.0-170-6.200	6.200	170,0	115,0	307.864	4.179.948	279,1
13	Yes	Siemens Gamesa SG 6.0-170-6.200	6.200	170,0	115,0	308.440	4.178.920	303,0
14	Yes	Siemens Gamesa SG 6.0-170-6.200	6.200	170,0	115,0	308.200	4.178.220	276,6
15	Yes	Siemens Gamesa SG 6.0-170-6.200	6.200	170,0	115,0	308.016	4.177.752	252,4
16	Yes	VESTAS V150-5.6-5.600	5.600	150,0	105,0	309.270	4.177.171	249,7
17	Yes	VESTAS V150-5.6-5.600	5.600	150,0	105,0	309.906	4.177.650	233,9
18	Yes	VESTAS V150-5.6-5.600	5.600	150,0	105,0	310.493	4.178.157	256,4
19	Yes	GAMESA G58/850-850	850	58,0	55,0	309.940	4.183.416	327,9
20	Yes	GAMESA G58/850-850	850	58,0	55,0	310.074	4.183.439	320,8
21	Yes	GAMESA G58/850-850	850	58,0	55,0	310.245	4.183.425	339,7
22	Yes	GAMESA G58/850-850	850	58,0	55,0	310.409	4.183.422	325,7
23	Yes	GAMESA G58/850-850	850	58,0	55,0	310.562	4.183.426	321,4
24	Yes	GAMESA G58/850-850	850	58,0	55,0	317.489	4.184.666	571,0
25	Yes	GAMESA G58/850-850	850	58,0	55,0	317.646	4.184.717	559,0
26	Yes	GAMESA G58/850-850	850	58,0	55,0	317.825	4.184.702	574,9
27	Yes	GAMESA G58/850-850	850	58,0	55,0	317.959	4.184.638	600,0
28	Yes	GAMESA G58/850-850	850	58,0	55,0	318.185	4.185.217	585,0
29	Yes	GAMESA G58/850-850	850	58,0	55,0	318.142	4.184.616	618,1
30	Yes	GAMESA G58/850-850	850	58,0	55,0	318.377	4.185.123	602,1

To be continued on next page...



## ZVI - Standard ZVI summary

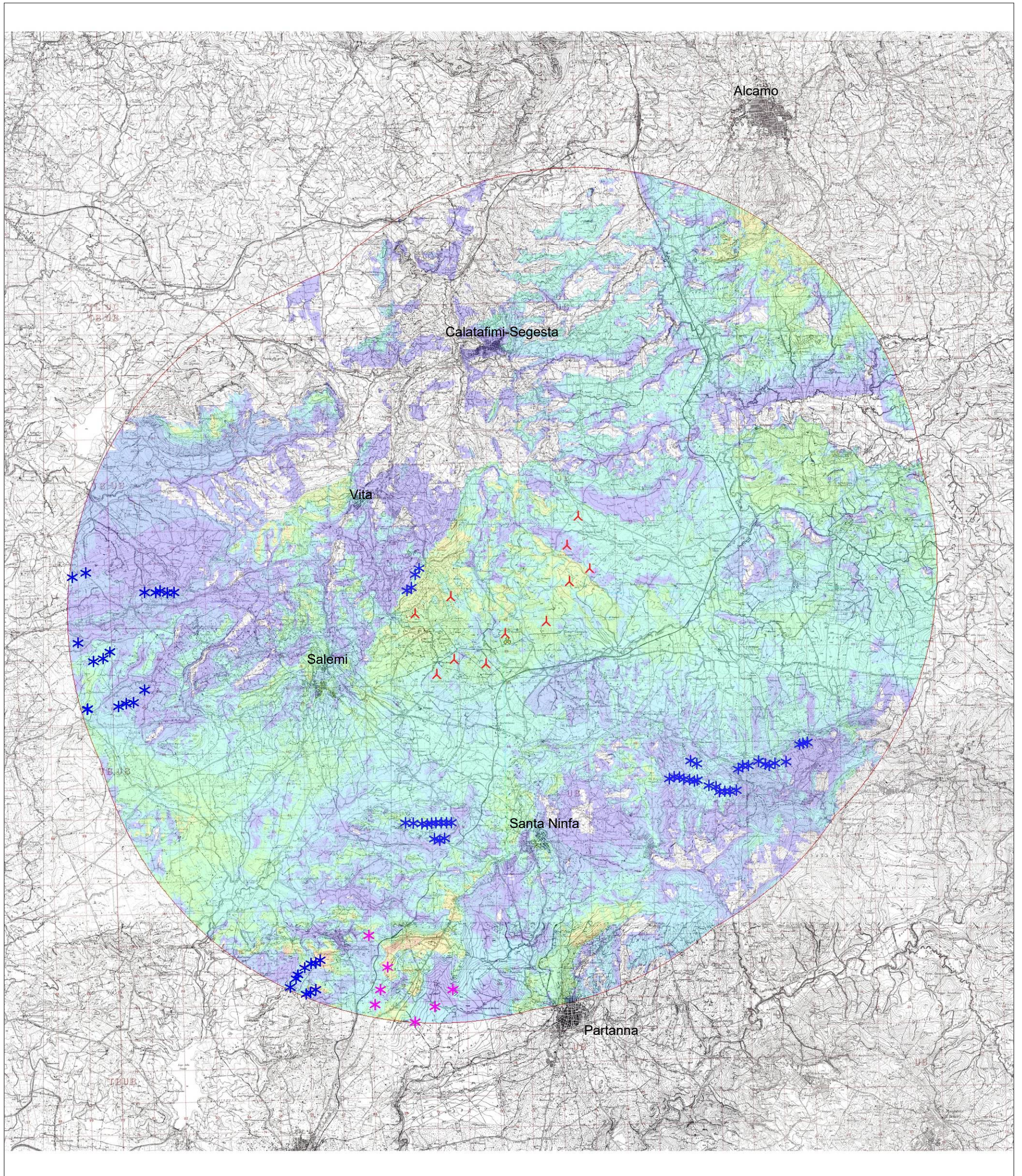
## Calculation: Impatto cumulativo Partanna 3 - Stato di progetto

...continued from previous page

	Valid	Manufact.	Type-generator	Power, rated [kW]	Rotor diameter [m]	Hub height [m]	Easting	Northing	Z [m]
31	Yes	GAMESA	G58/850-850	850	58,0	55,0	318.287	4.184.577	653,9
32	Yes	GAMESA	G58/850-850	850	58,0	55,0	318.378	4.184.599	663,9
33	Yes	GAMESA	G58/850-850	850	58,0	55,0	318.742	4.184.419	583,2
34	Yes	GAMESA	G58/850-850	850	58,0	55,0	318.975	4.184.373	582,7
35	Yes	GAMESA	G58/850-850	850	58,0	55,0	319.076	4.184.218	602,9
36	Yes	GAMESA	G58/850-850	850	58,0	55,0	319.251	4.184.234	576,6
37	Yes	GAMESA	G58/850-850	850	58,0	55,0	319.418	4.184.229	575,0
38	Yes	GAMESA	G58/850-850	850	58,0	55,0	319.689	4.184.920	538,0
39	Yes	GAMESA	G58/850-850	850	58,0	55,0	319.610	4.184.259	582,5
40	Yes	GAMESA	G58/850-850	850	58,0	55,0	319.825	4.185.017	564,7
41	Yes	GAMESA	G58/850-850	850	58,0	55,0	320.015	4.185.024	578,2
42	Yes	GAMESA	G58/850-850	850	58,0	55,0	320.333	4.185.146	571,9
43	Yes	GAMESA	G58/850-850	850	58,0	55,0	320.551	4.185.052	572,2
44	Yes	GAMESA	G58/850-850	850	58,0	55,0	320.670	4.185.011	569,5
45	Yes	GAMESA	G58/850-850	850	58,0	55,0	320.849	4.185.075	601,1
46	Yes	GAMESA	G58/850-850	850	58,0	55,0	321.207	4.185.115	584,1
47	Yes	GAMESA	G58/850-850	850	58,0	55,0	321.642	4.185.657	550,9
48	Yes	GAMESA	G58/850-850	850	58,0	55,0	321.753	4.185.674	550,1
49	Yes	GAMESA	G58/850-850	850	58,0	55,0	321.890	4.185.705	554,6
50	Yes	GAMESA	G58/850-850	850	58,0	55,0	309.113	4.183.457	295,6
51	Yes	GAMESA	G58/850-850	850	58,0	55,0	309.350	4.183.435	282,4
52	Yes	GAMESA	G58/850-850	850	58,0	55,0	309.629	4.183.411	305,1
53	Yes	GAMESA	G58/850-850	850	58,0	55,0	309.806	4.183.399	319,5
54	Yes	GAMESA	G58/850-850	850	58,0	55,0	310.012	4.182.927	296,8
55	Yes	GAMESA	G58/850-850	850	58,0	55,0	310.180	4.182.889	300,5
56	Yes	GAMESA	G58/850-850	850	58,0	55,0	310.338	4.182.937	295,0
57	Yes	Siemens Gamesa	SG 6.0-170-6.200	6.200	170,0	115,0	309.726	4.191.467	503,0
58	Yes	Siemens Gamesa	SG 6.0-170-6.200	6.200	170,0	115,0	309.327	4.190.775	534,4
59	Yes	Siemens Gamesa	SG 6.0-170-6.200	6.200	170,0	115,0	309.461	4.190.869	521,0
60	Yes	Siemens Gamesa	SG 6.0-170-6.200	6.200	170,0	115,0	309.601	4.191.281	503,9
61	No	VESTAS	V52-850	850	52,0	49,0	306.313	4.179.204	278,9
62	No	VESTAS	V52-850	850	52,0	49,0	306.168	4.179.114	275,7
63	No	VESTAS	V52-850	850	52,0	49,0	306.021	4.179.103	270,8
64	No	VESTAS	V52-850	850	52,0	49,0	305.816	4.178.967	271,0
65	No	VESTAS	V52-850	850	52,0	49,0	305.597	4.178.747	248,7
66	No	VESTAS	V52-850	850	52,0	49,0	305.526	4.178.627	249,7
67	No	VESTAS	V52-850	850	52,0	49,0	305.341	4.178.355	243,4
68	No	VESTAS	V52-850	850	52,0	49,0	306.143	4.178.262	281,4
69	No	VESTAS	V52-850	850	52,0	49,0	305.978	4.178.171	276,3
70	No	VESTAS	V52-850	850	52,0	49,0	305.847	4.178.137	275,0
71	No	VESTAS	V52-850	850	52,0	49,0	301.026	4.190.913	359,6
72	No	VESTAS	V52-850	850	52,0	49,0	301.379	4.190.910	390,0
73	No	VESTAS	V52-850	850	52,0	49,0	301.746	4.190.892	418,6
74	No	VESTAS	V52-850	850	52,0	49,0	301.954	4.190.888	406,4
75	No	VESTAS	V52-850	850	52,0	49,0	301.523	4.190.952	400,0
76	Yes	VESTAS	V90-2.000	2.000	90,0	80,0	298.883	4.189.384	300,1
77	Yes	VESTAS	V90-2.000	2.000	90,0	80,0	299.349	4.188.777	307,0
78	Yes	VESTAS	V90-2.000	2.000	90,0	80,0	299.658	4.188.862	319,7
79	Yes	VESTAS	V90-2.000	2.000	90,0	80,0	299.876	4.189.073	326,0
80	Yes	VESTAS	V90-2.000	2.000	90,0	80,0	300.950	4.187.852	277,0
81	Yes	VESTAS	V90-2.000	2.000	90,0	80,0	300.596	4.187.459	278,1
82	Yes	VESTAS	V90-2.000	2.000	90,0	80,0	300.357	4.187.439	262,2
83	Yes	VESTAS	V90-2.000	2.000	90,0	80,0	300.119	4.187.351	250,6
84	Yes	VESTAS	V90-2.000	2.000	90,0	80,0	299.123	4.187.282	275,3
85	Yes	VESTAS	V90-2.000	2.000	90,0	80,0	299.138	4.187.293	275,0
86	Yes	VESTAS	V90-2.000	2.000	90,0	80,0	298.748	4.191.447	278,2
87	Yes	VESTAS	V90-2.000	2.000	90,0	80,0	299.187	4.191.570	255,5

## ZVI - Map Standard ZVI summary

Calculation: Impatto cumulativo Partanna 3 - Stato di progetto



0 2,5 5 7,5 10km

Map: IGM maps 1:25000 , Print scale 1:120.000, Map center UTM (north)-WGS84 Zone: 33 East: 313.000 North: 4.190.994

▲ WTG in progetto \* Impianti esistenti \* Impianti in fase di autorizzazione \* Impianti autorizzati

Grid step: 25 m - Eye height: 1,7 m - Calculation height: Total height

## ZVI - Map Standard ZVI summary

Calculation: Impatto cumulativo Partanna 3 - Stato di progetto

