

# REGIONE SARDEGNA

COMUNE DI PLOAGHE (SS)

## ATLAS SOLAR 3 s.r.l.

Rovereto (TN)  
Piazza Manifattura n.1, CAP 38068  
C.F. e P.IVA 03051580300  
Pec: atlassolar3@legalmail.it

**PROGETTO PER LA COSTRUZIONE ED ESERCIZIO DI UN IMPIANTO AGRIVOLTAICO, PER LA PRODUZIONE DI ENERGIA ELETTRICA DA FONTE RINNOVABILE ABBINATA AD ATTIVITA' ZOOTECNICA E AD UN IMPIANTO DI ACCUMULO INTEGRATO (STORAGE), SITO NEL COMUNE DI PLOAGHE (SS) PER UNA POTENZA NOMINALE IN A.C. DI 51520 KW ALLA TENSIONE RETE DI 36 KV, E DELLE RELATIVE OPERE DI CONNESSIONE RICADENTI ANCHE NEL COMUNE DI CODRONGIANOS (SS).**

**PROGETTO DEFINITIVO DELL'IMPIANTO DI PRODUZIONE  
COMPRESIVO DELLE OPERE DI RETE PER LA CONNESSIONE**

**ELABORATO**

**ALLEGATI ALLA RELAZIONE DI COMPATIBILITA' IDROGEOLOGICA  
E IDRAULICA**

**DATA:** 30/12/2022

**SCALA :**

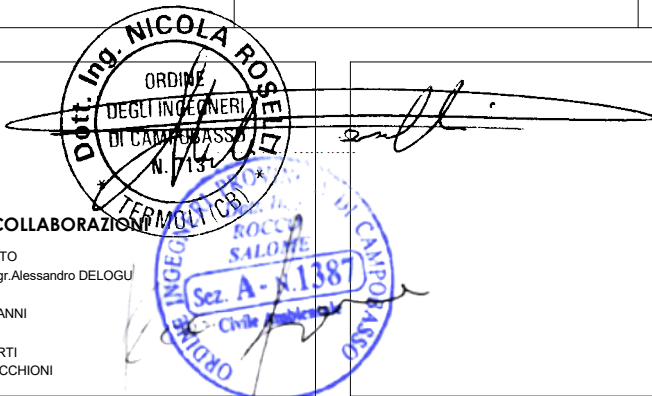
**aggiornamento :**

**PROGETTISTI**  
Ing. Nicola ROSELLI

Ing. Rocco SALOME

**CONSULENZE E COLLABORAZIONI**

Arch. Gianluca DI DONATO  
Sea Tuscia s.r.l. - Dott. Agr. Alessandro DELOGU  
Ing. Elvio MURETTA  
Archeol. Gerardo FRATIANNI  
Geol. Vito PLESCIA  
Per. Ind. Alessandro CORTI  
Prof. Giampaolo PENNACCHIONI



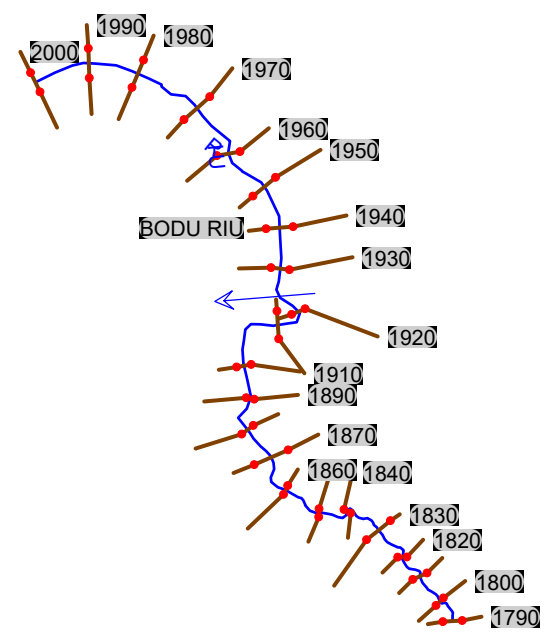
  
Energy for the Future  
Udine (UD) Via Andreuzzi n°12, CAP 33100  
Partita IVA 02943070306  
www.atlas-re.eu

revisione	descrizione	data	<b>DOC RP2</b>
A	ALLEGATI ALLA RELAZIONE DI COMPATIBILITA' IDROGEOLOGICA E IDRAULICA	30/12/2022	
B			
C			

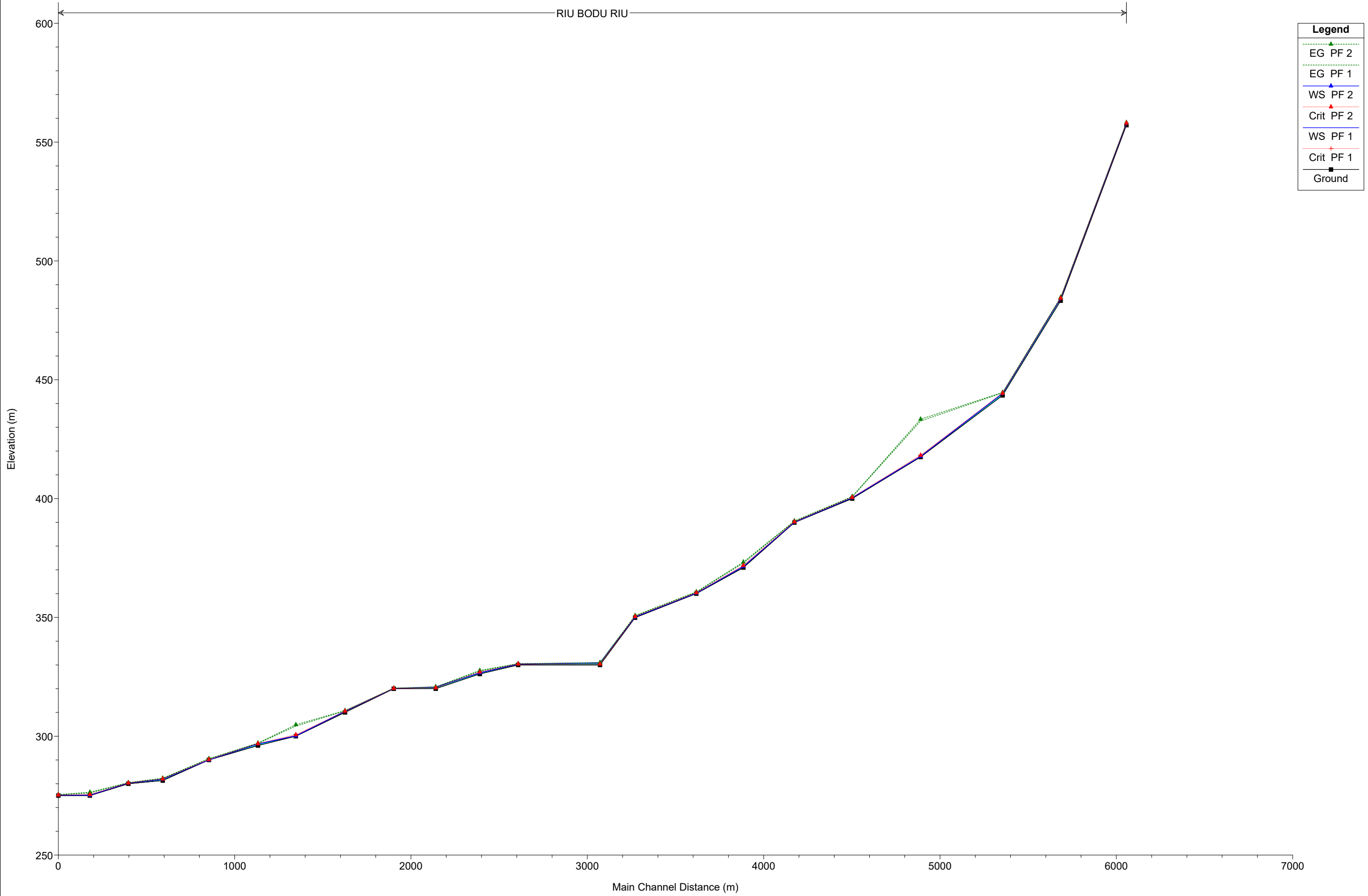
Sono vietati l'uso e la riproduzione non autorizzati del presente elaborato

**ALLEGATO N°1**

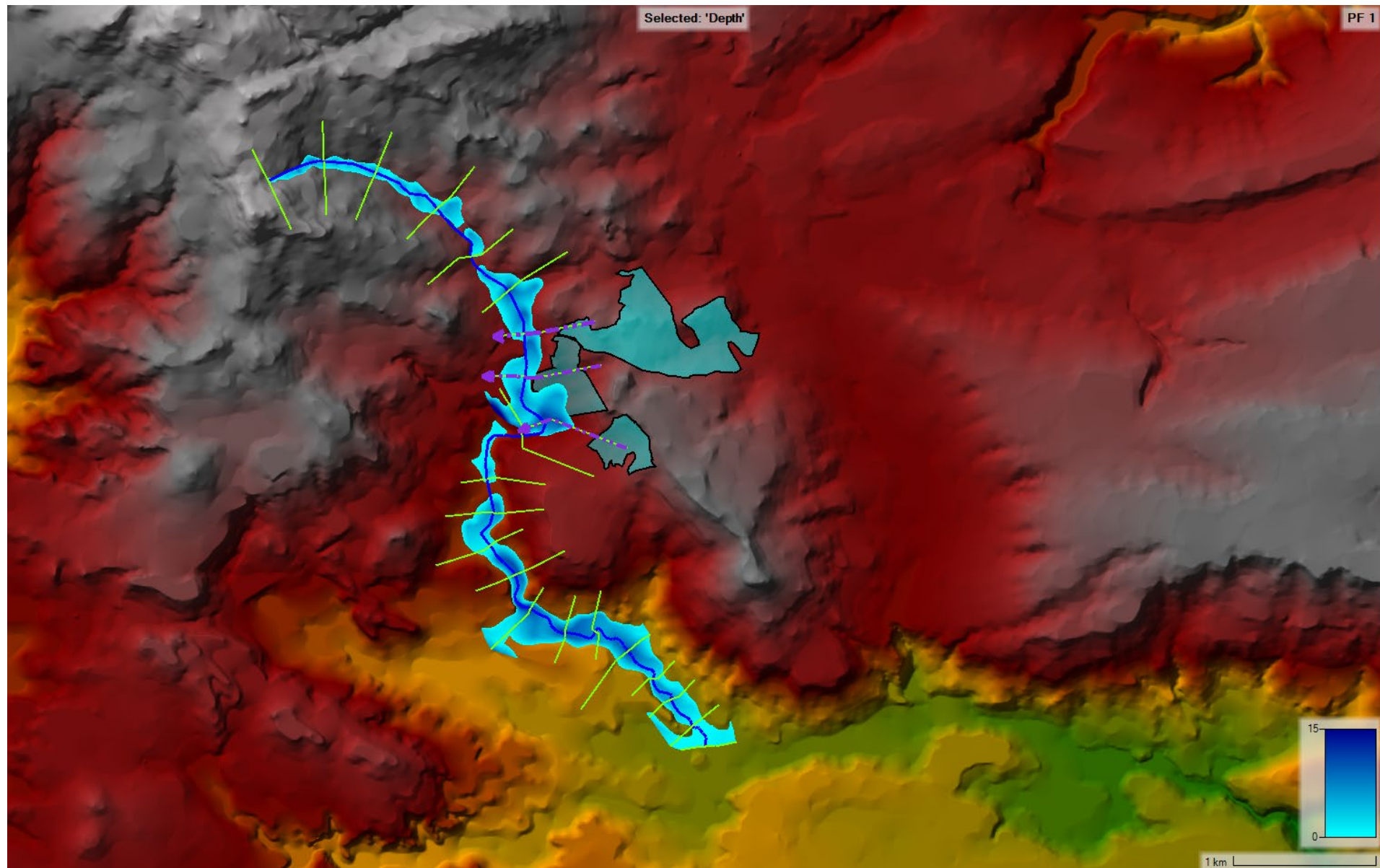
**OUTPUT DEI RISULTATI OTTENUTI CON IL SOFTWARE HEC-RAS IN  
CORRISPONDENZA DI OGNI SEZIONE DI CALCOLO PER IL RIU BADU RUIU E  
PER N°3 SEZIONI DI CONTROLLO.**



Legend	
EG PF 2	▲
EG PF 1	▲
WS PF 2	▲
Crit PF 2	▲
WS PF 1	▲
Crit PF 1	▲
Ground	■

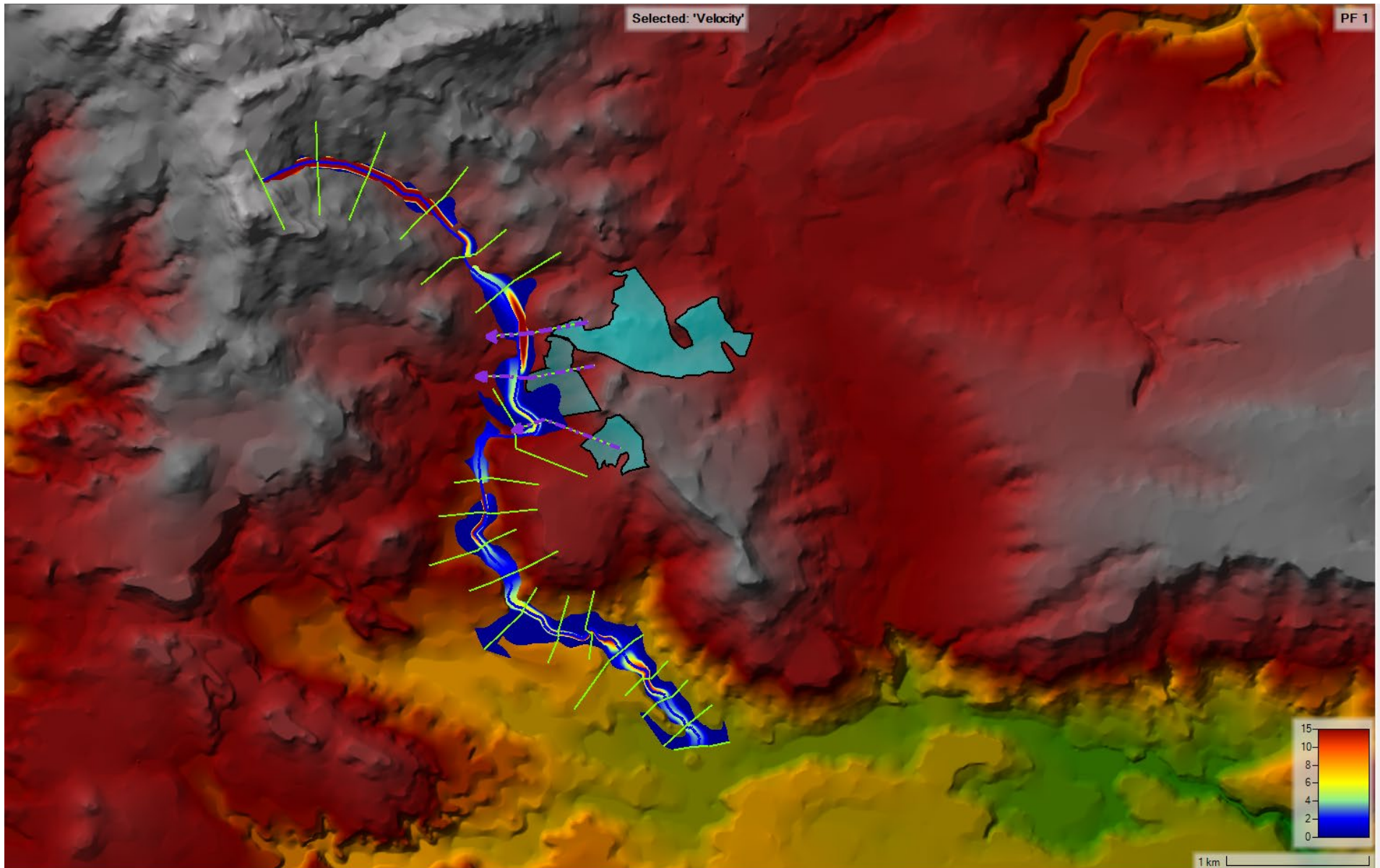


# RIU BADU RUIU PERDIO DI RITORNO 30 ANNI



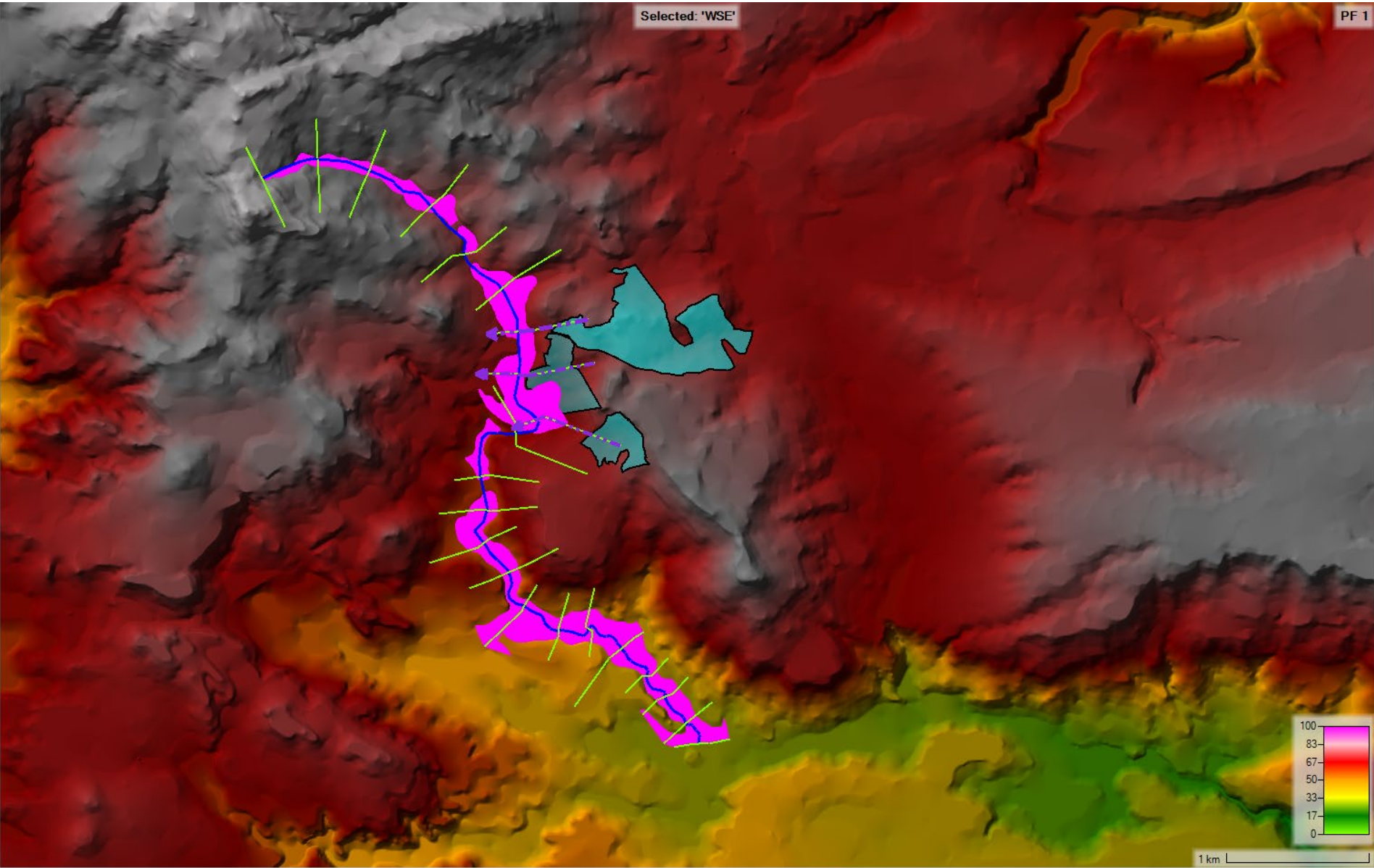
Selected: 'Velocity'

PF 1

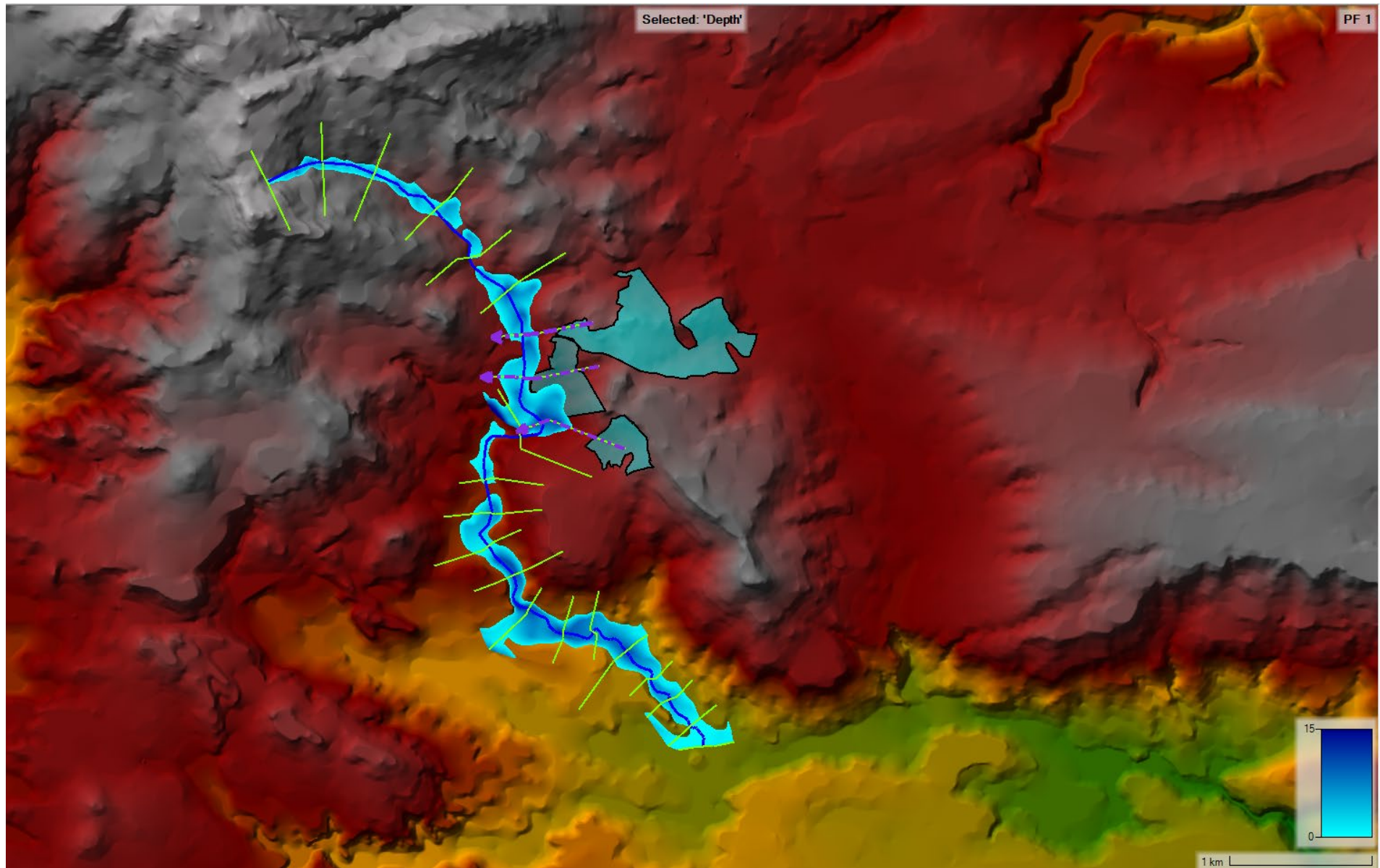


Selected: 'WSE'

PF 1



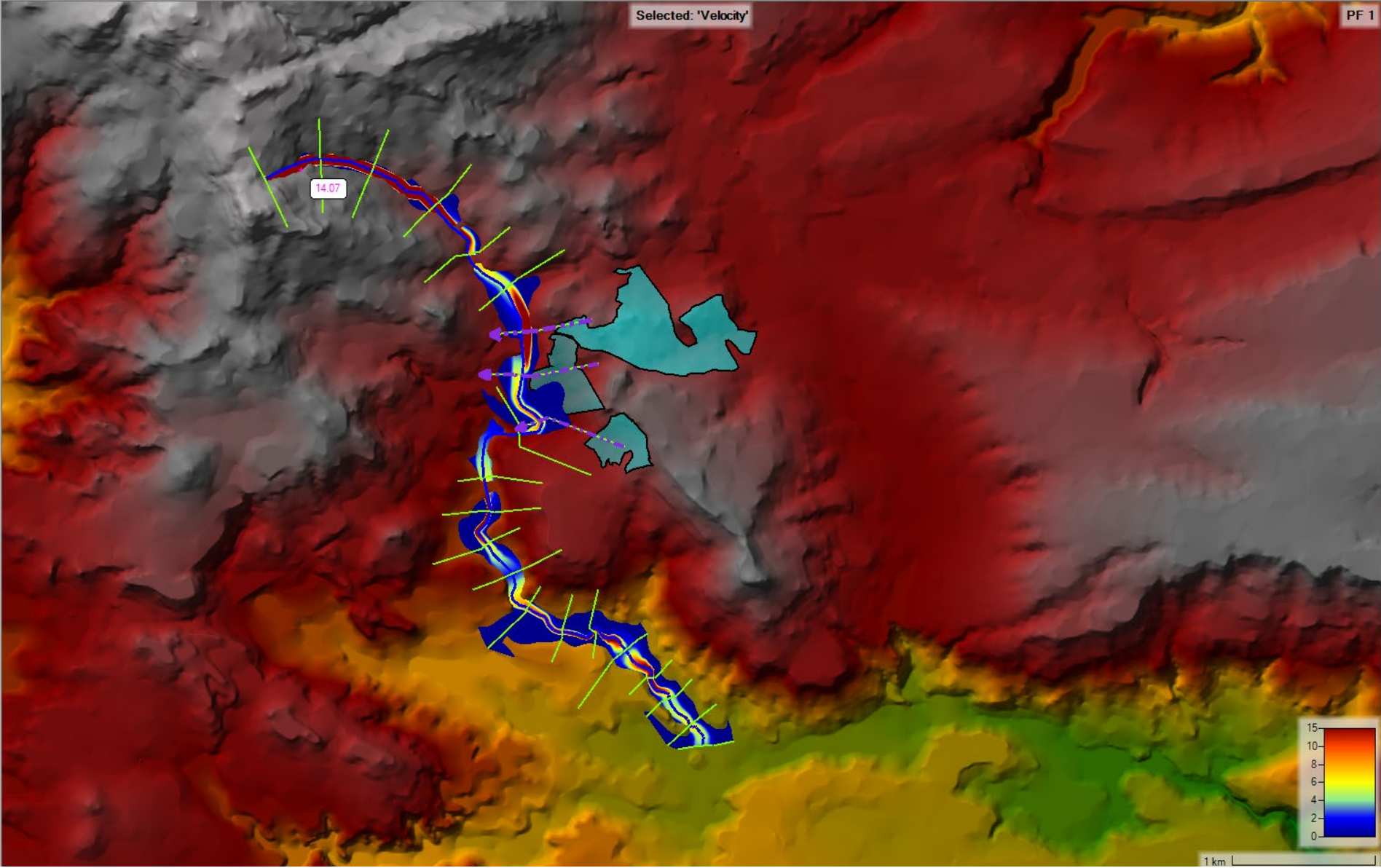
RIU RIU BADU RUIU PERDIO DI RITORNO 200 ANNI





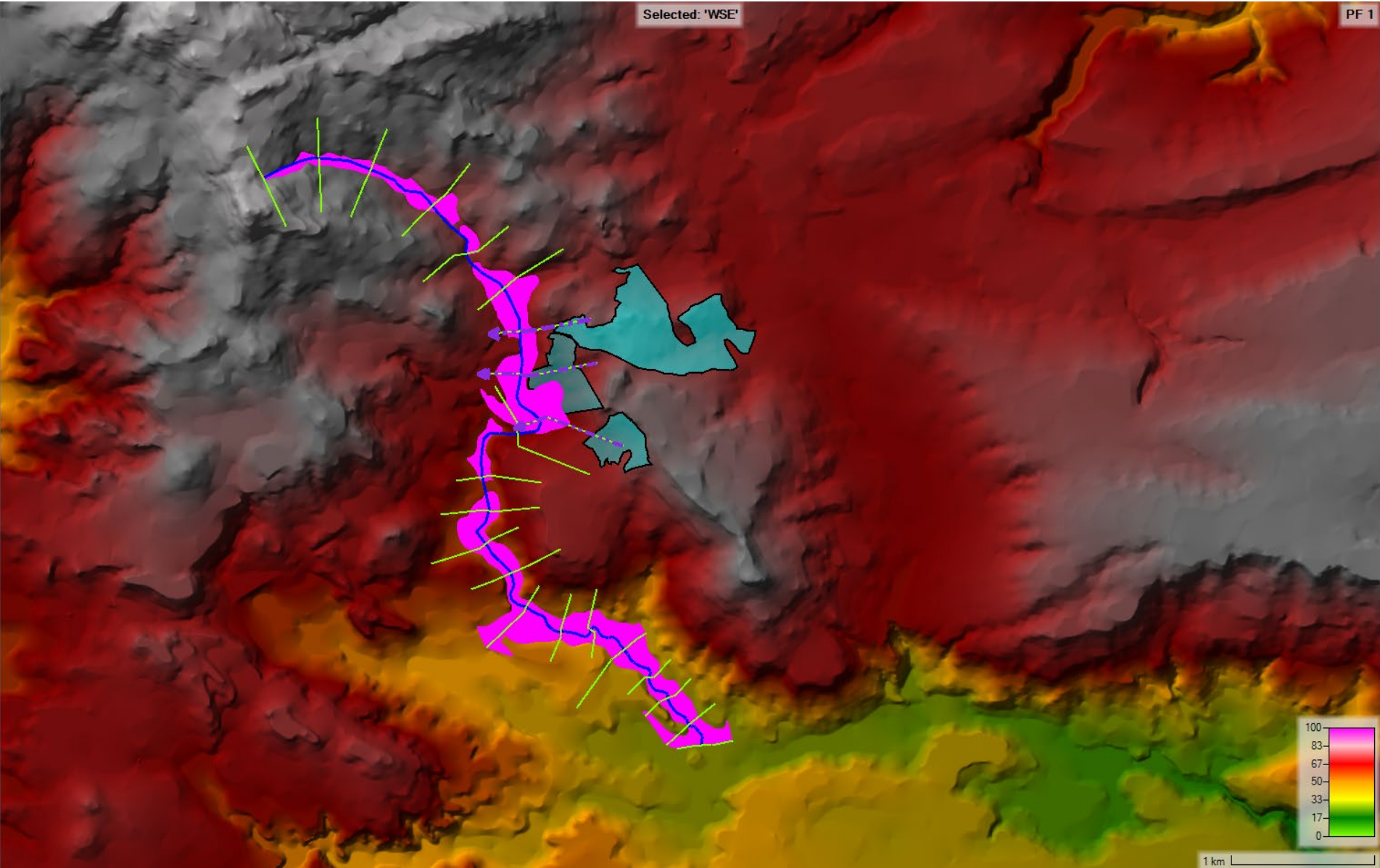
Selected: 'Velocity'

PF 1

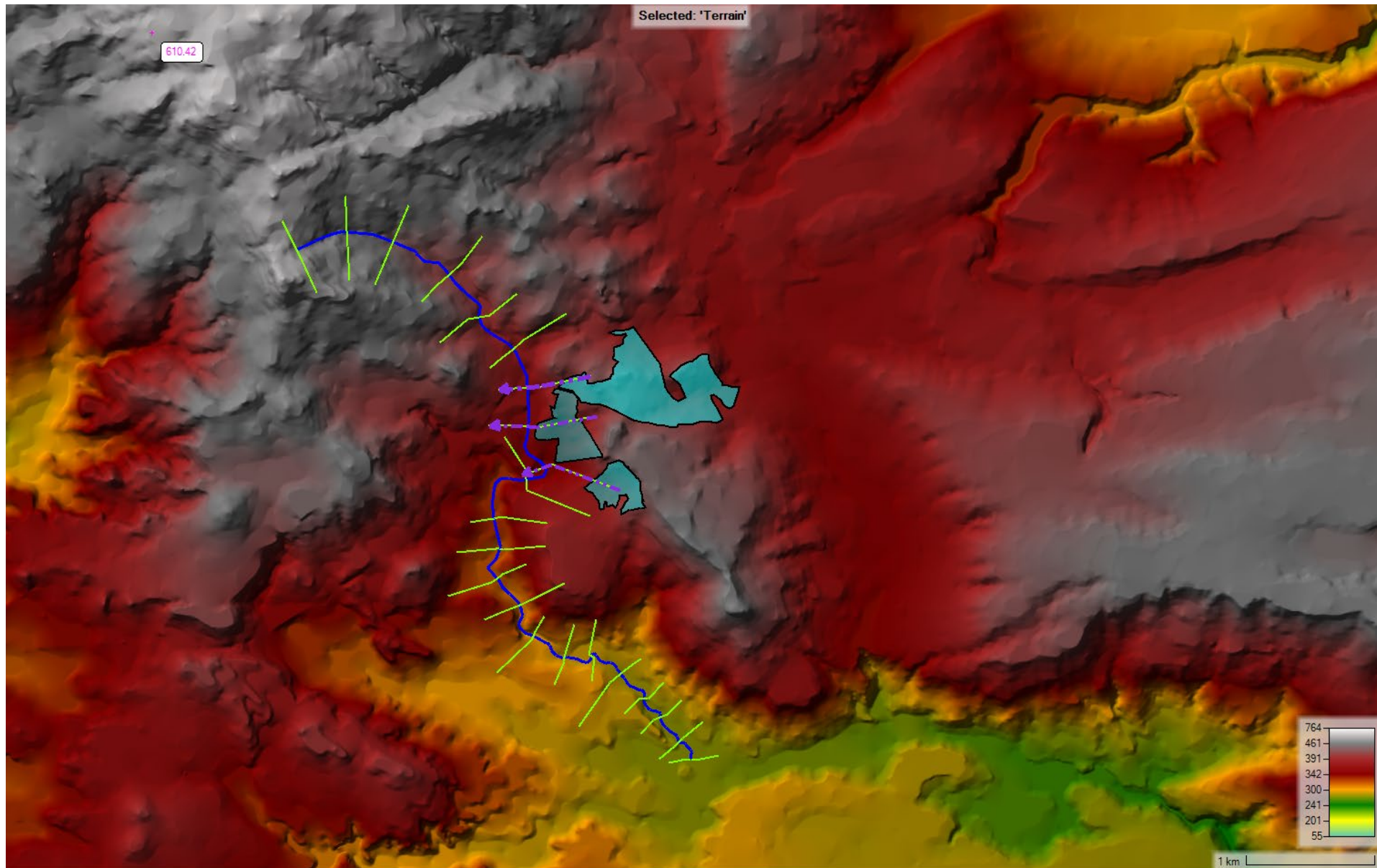


Selected: 'WSE'

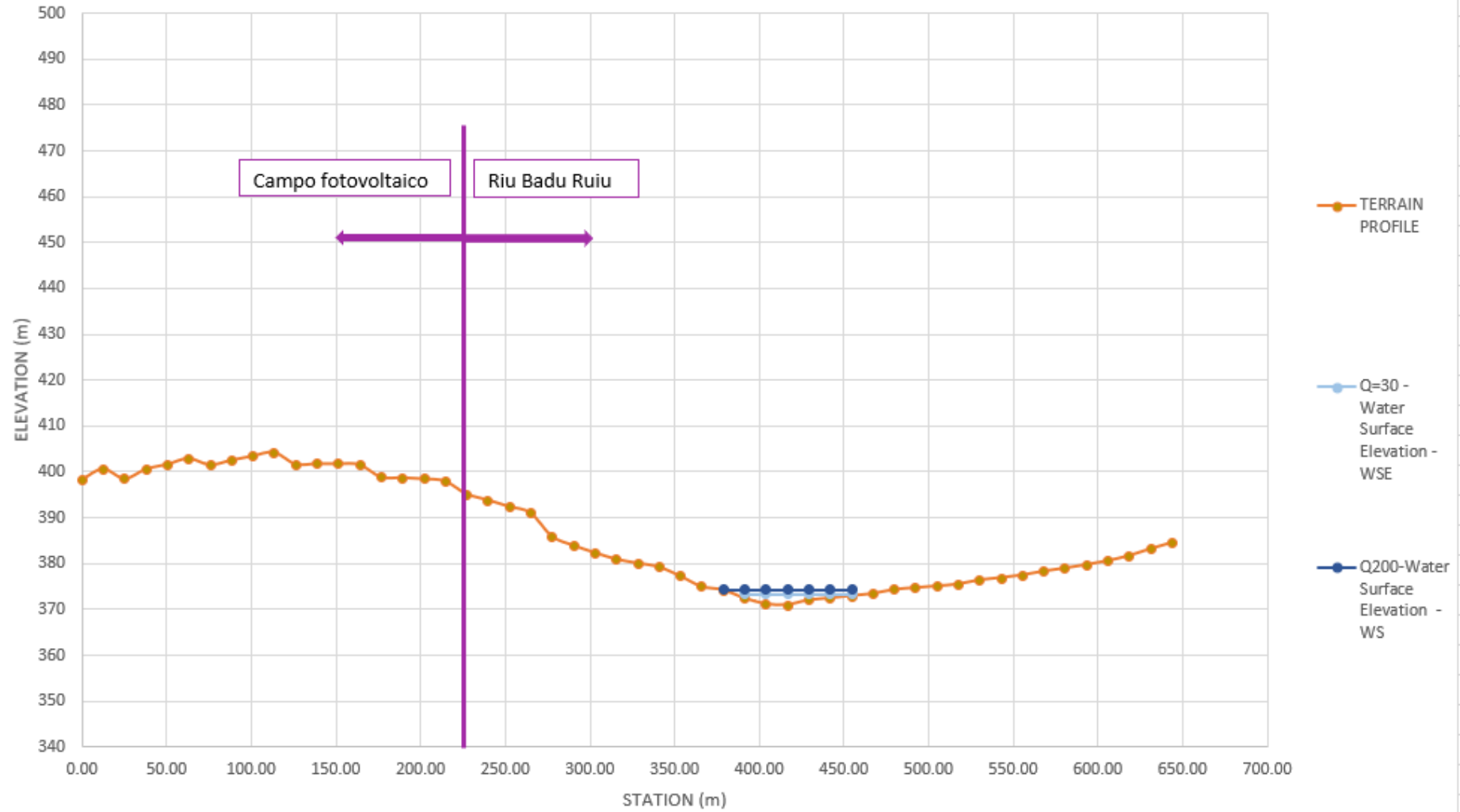
PF 1



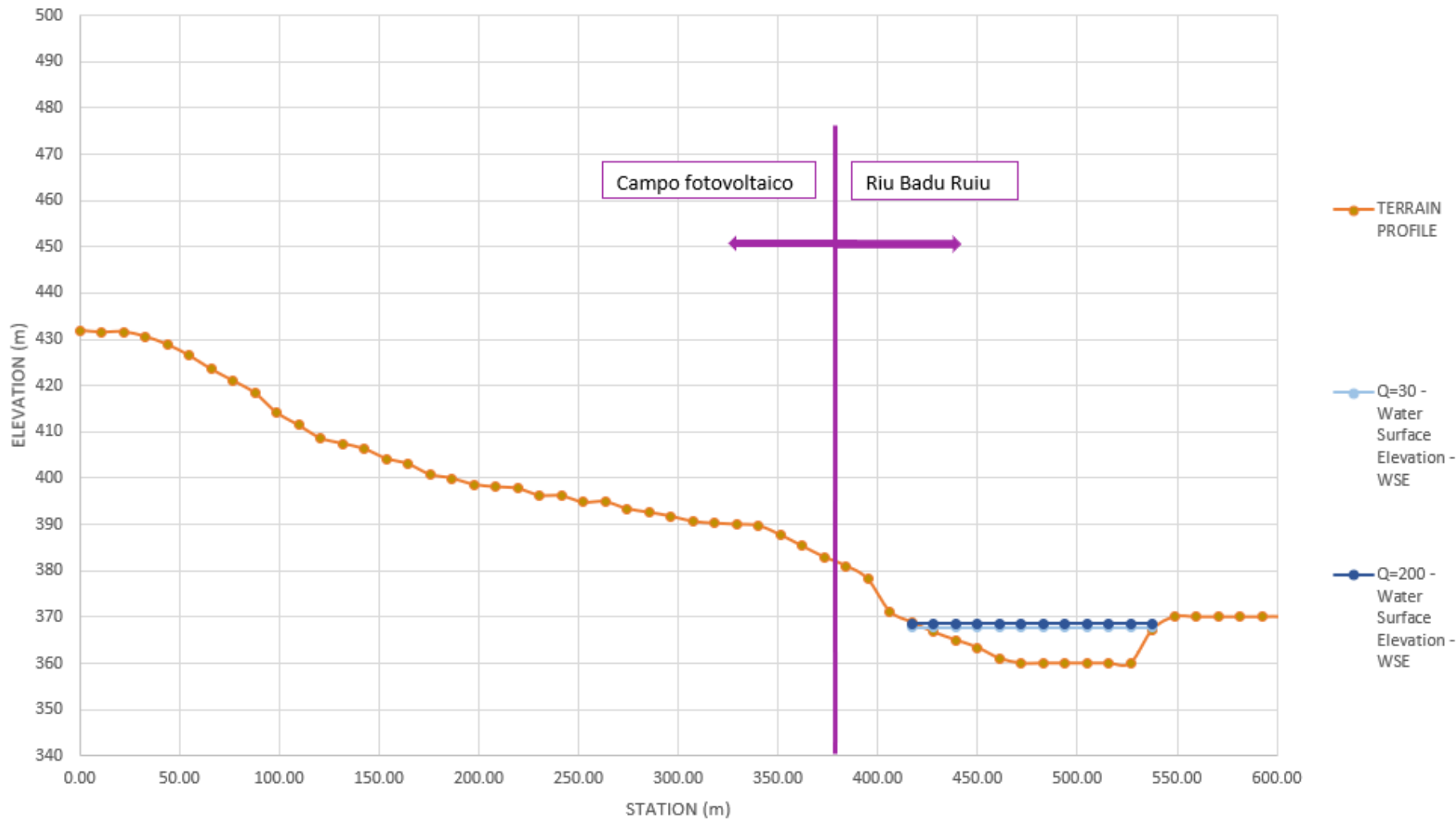
# RIU RIU BADU RUIU – SEZIONI DI CONTROLLO



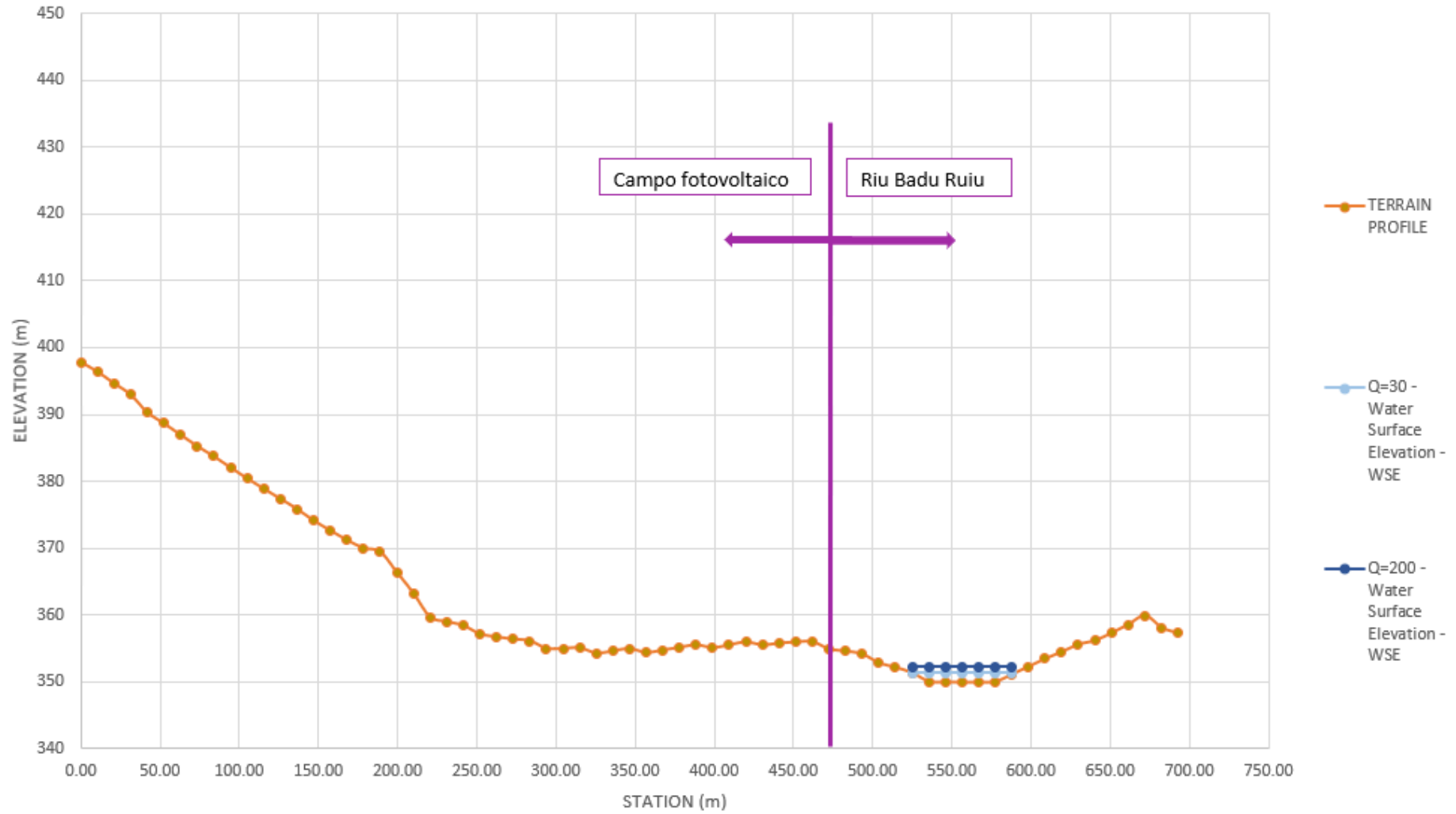
SEZIONE\_CONTROLLO\_N1\_CAMPO\_RIU\_BADU\_RUIU

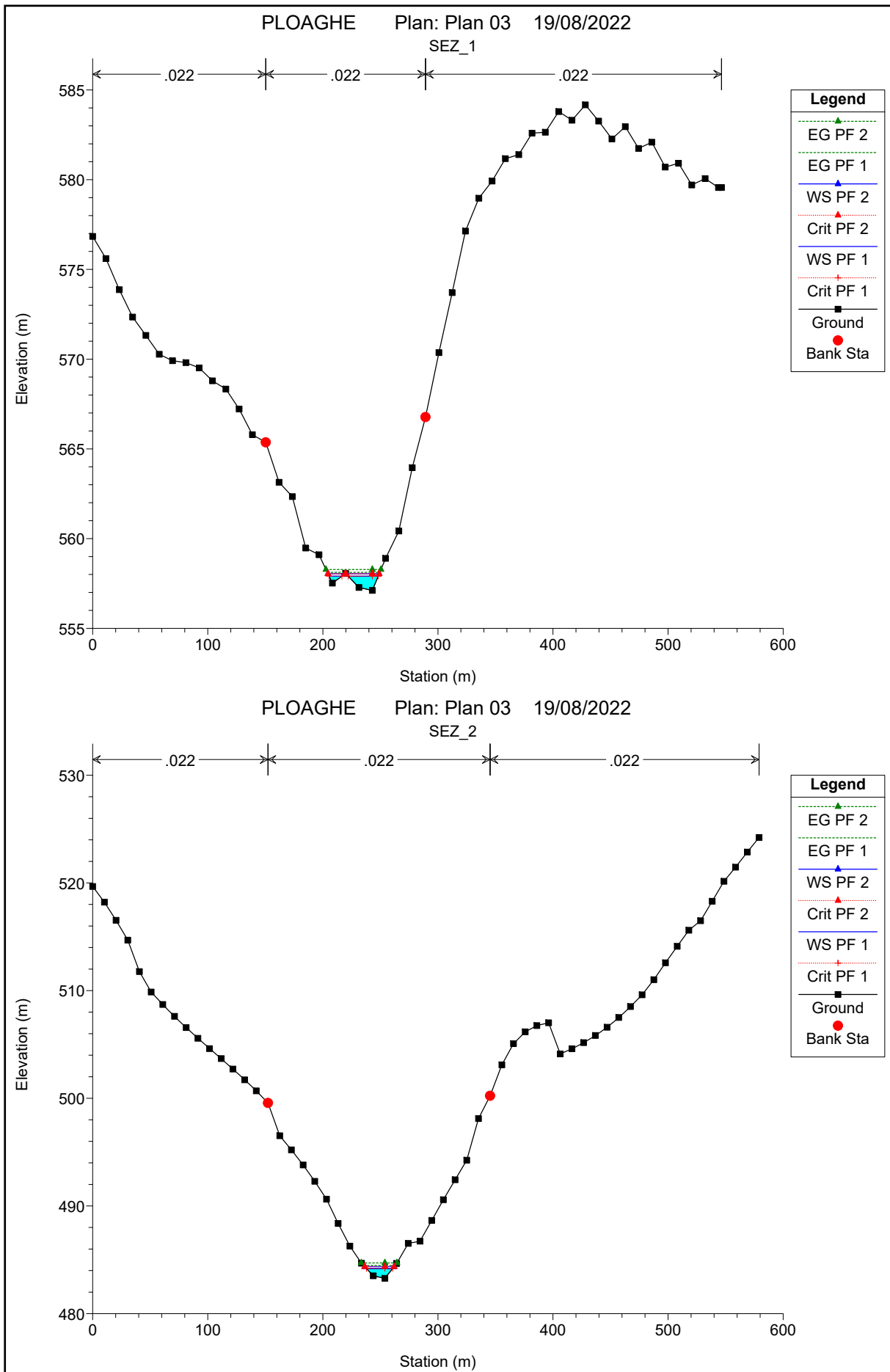


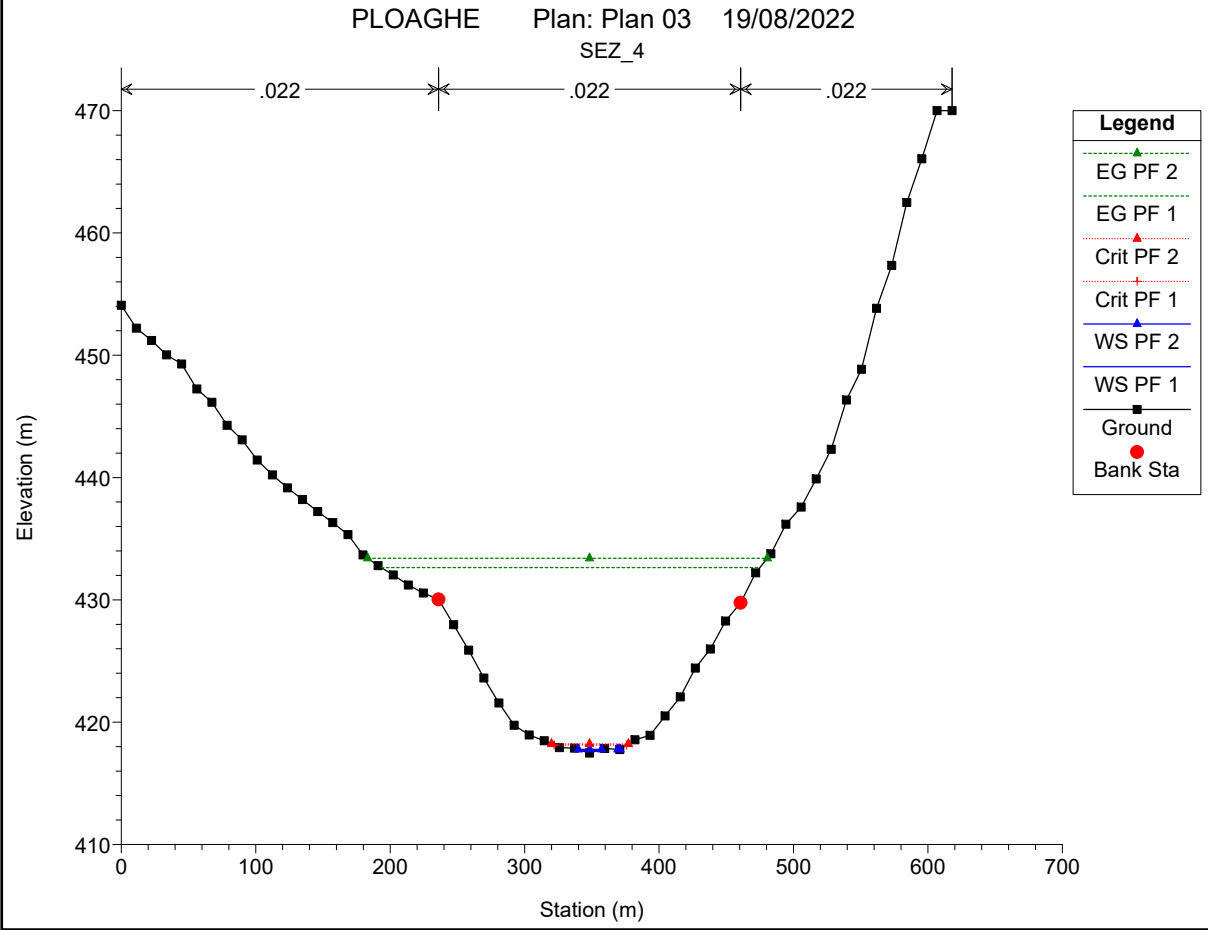
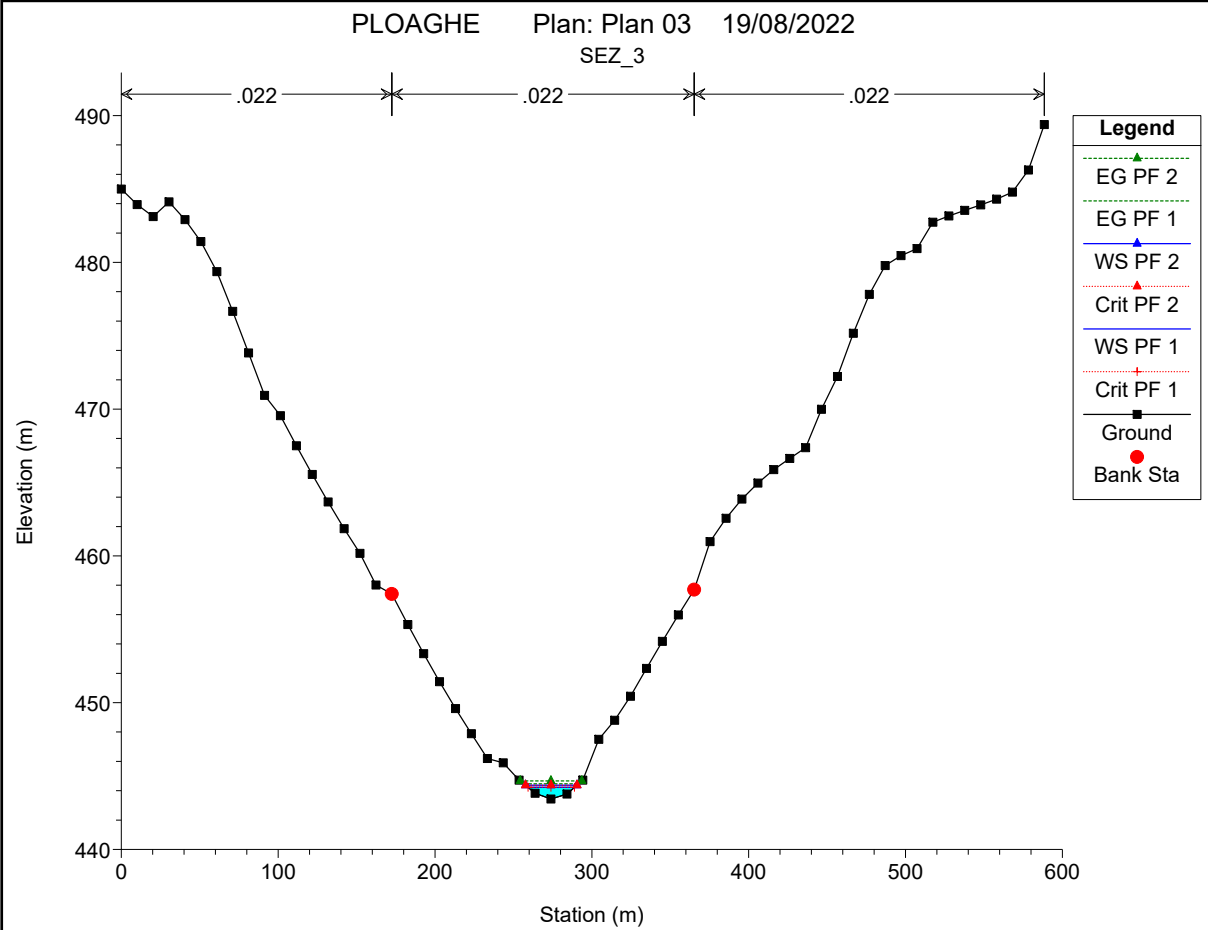
SEZIONE\_CONTROLLO\_N2\_CAMPO\_RIU\_BADU\_RUIU



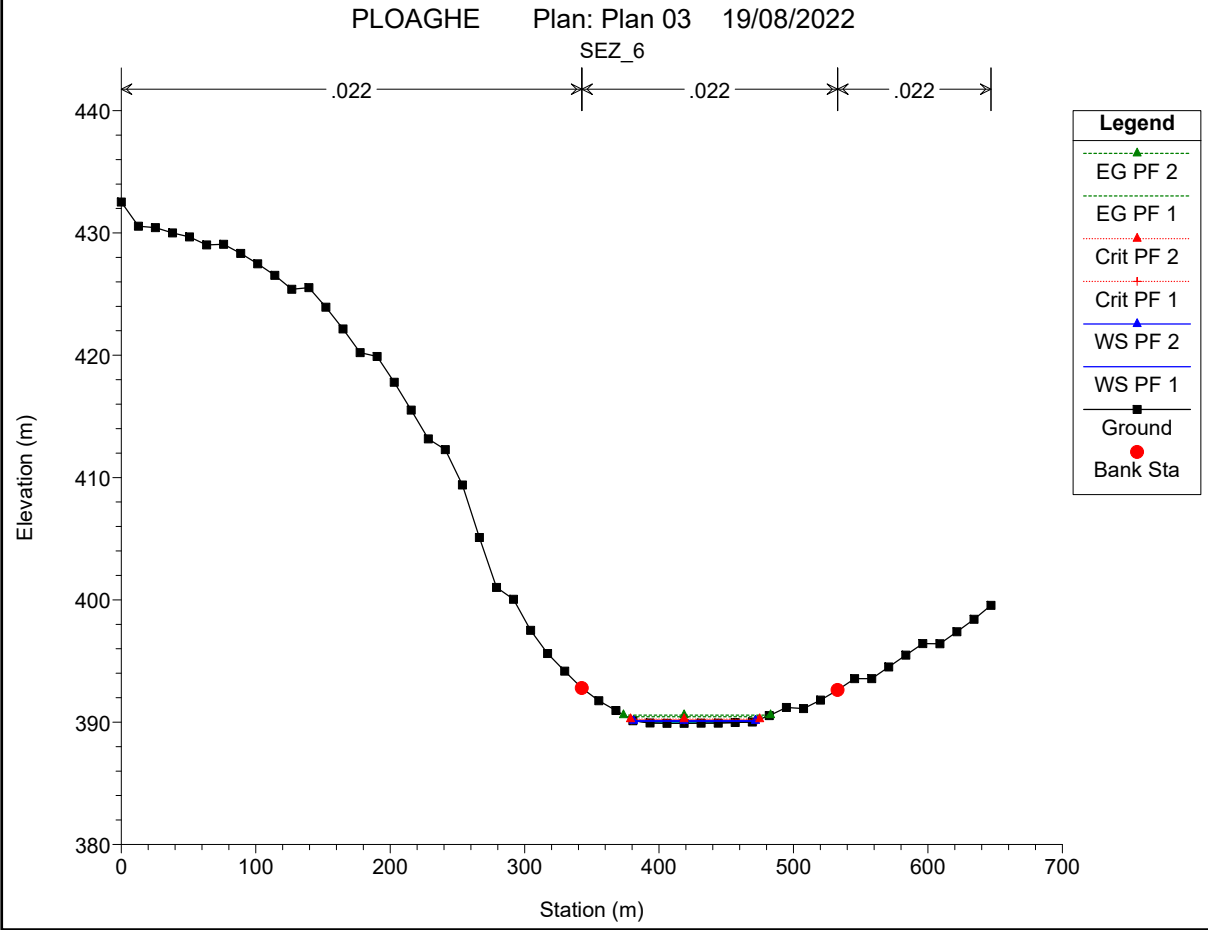
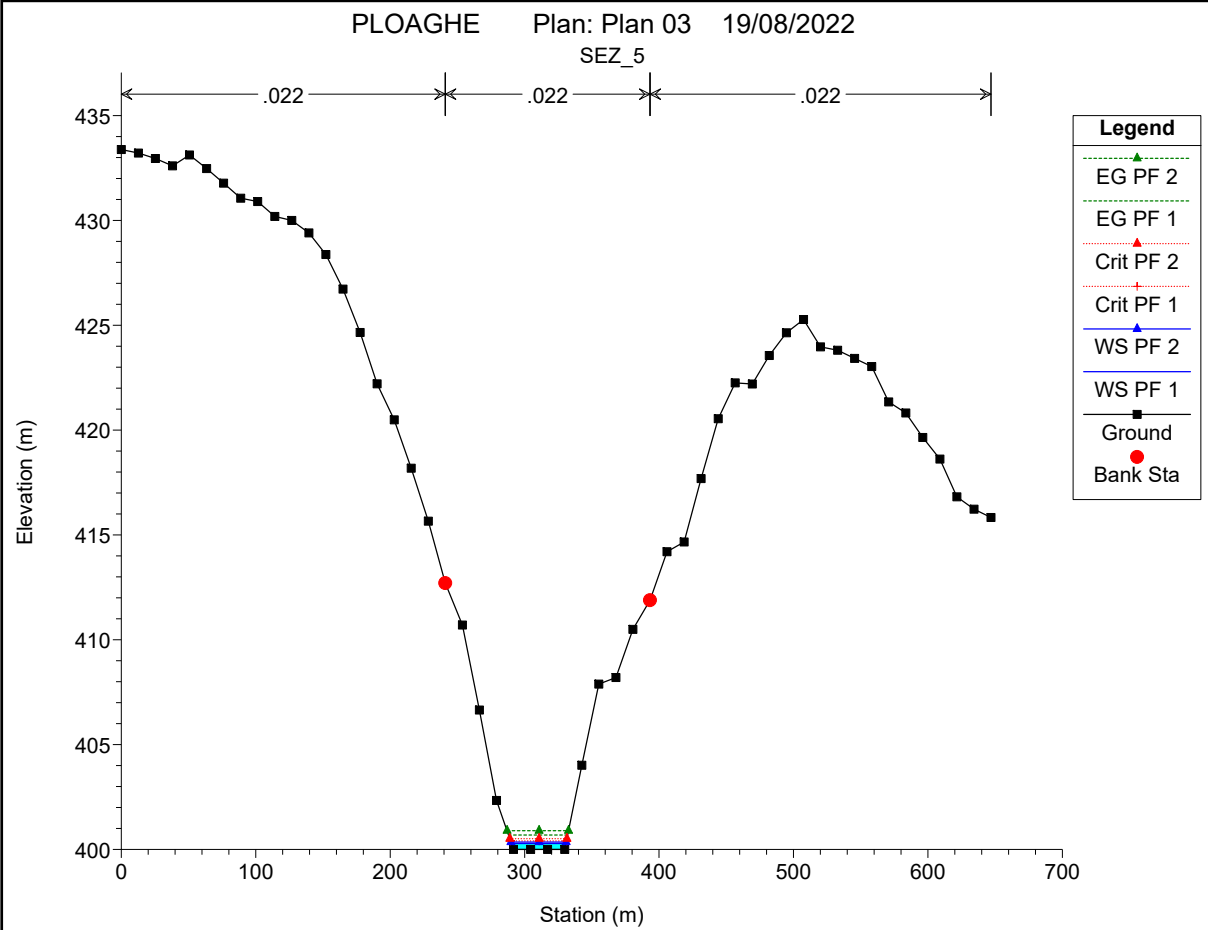
SEZIONE\_CONTROLLO\_N3\_CAMPO\_RIU\_BADU\_RUIU

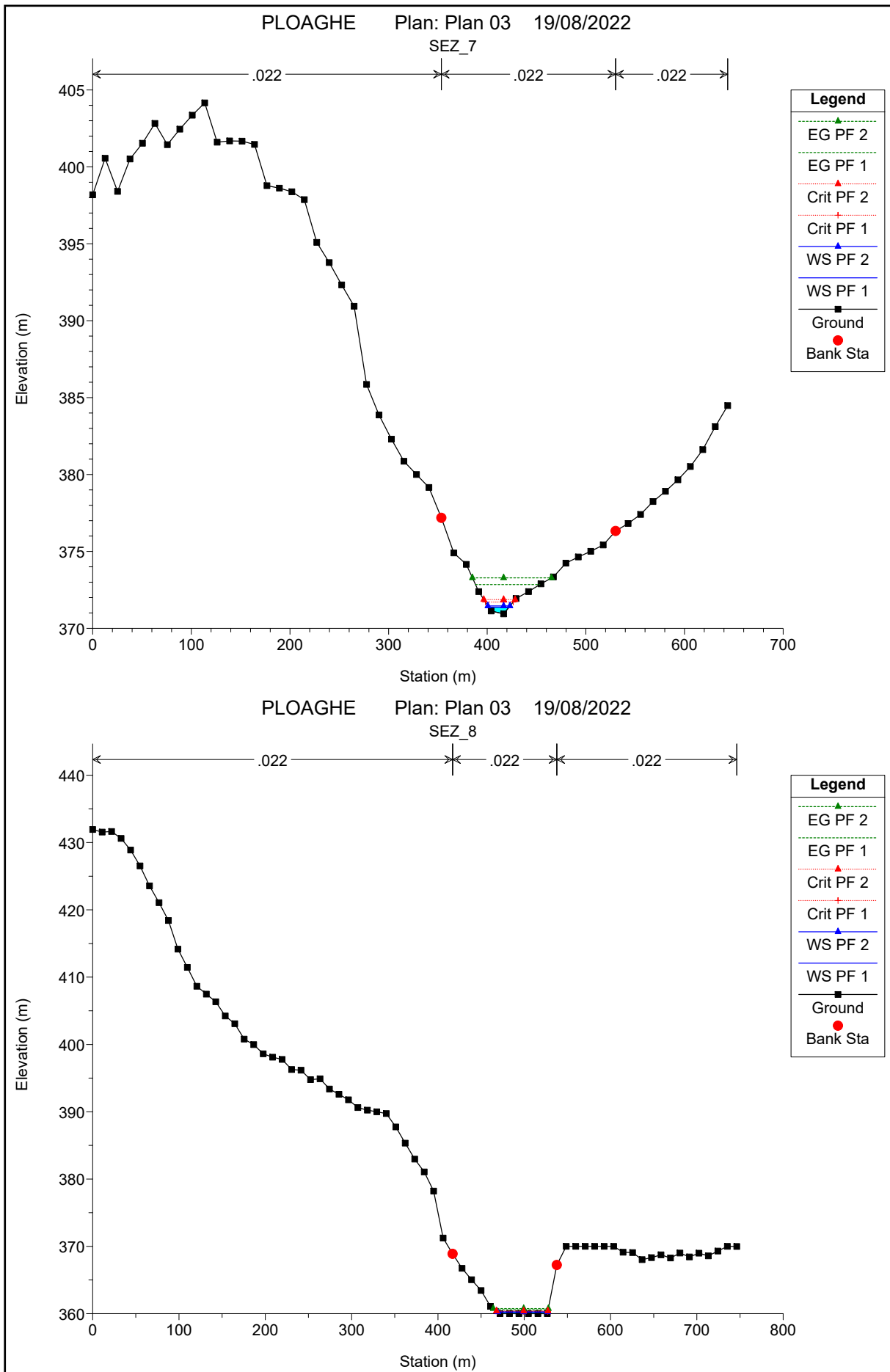




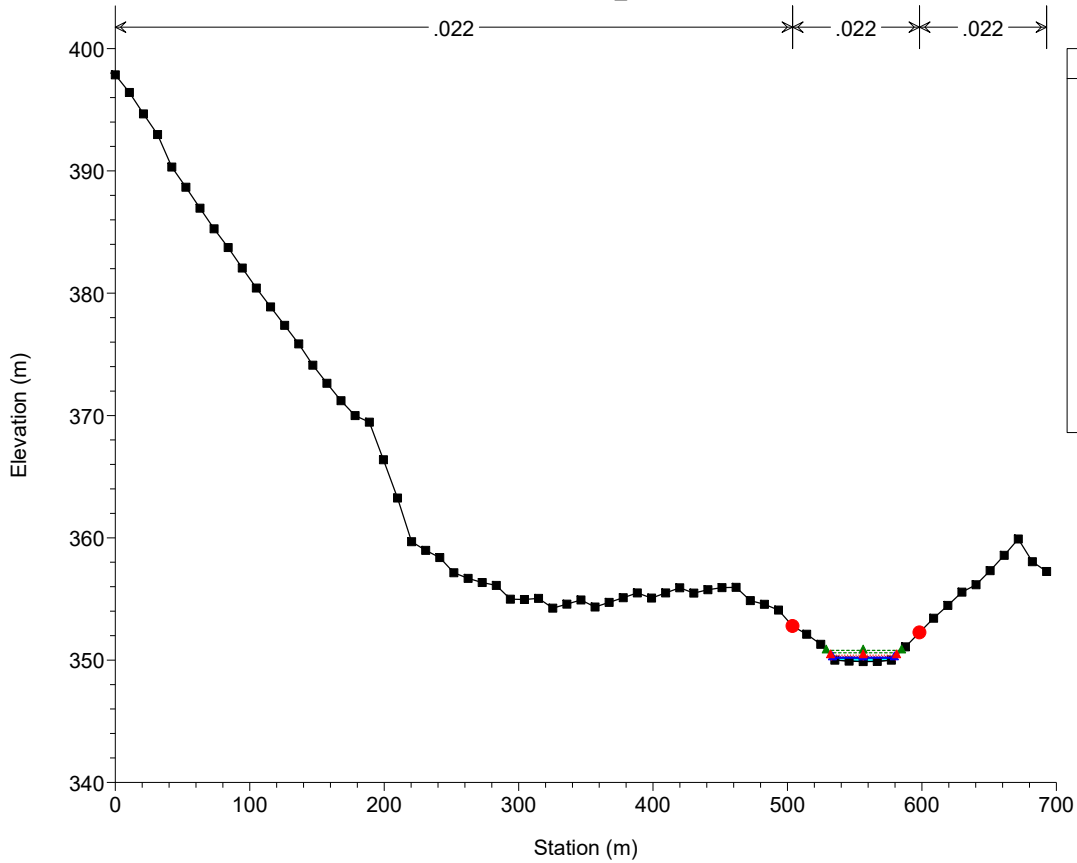




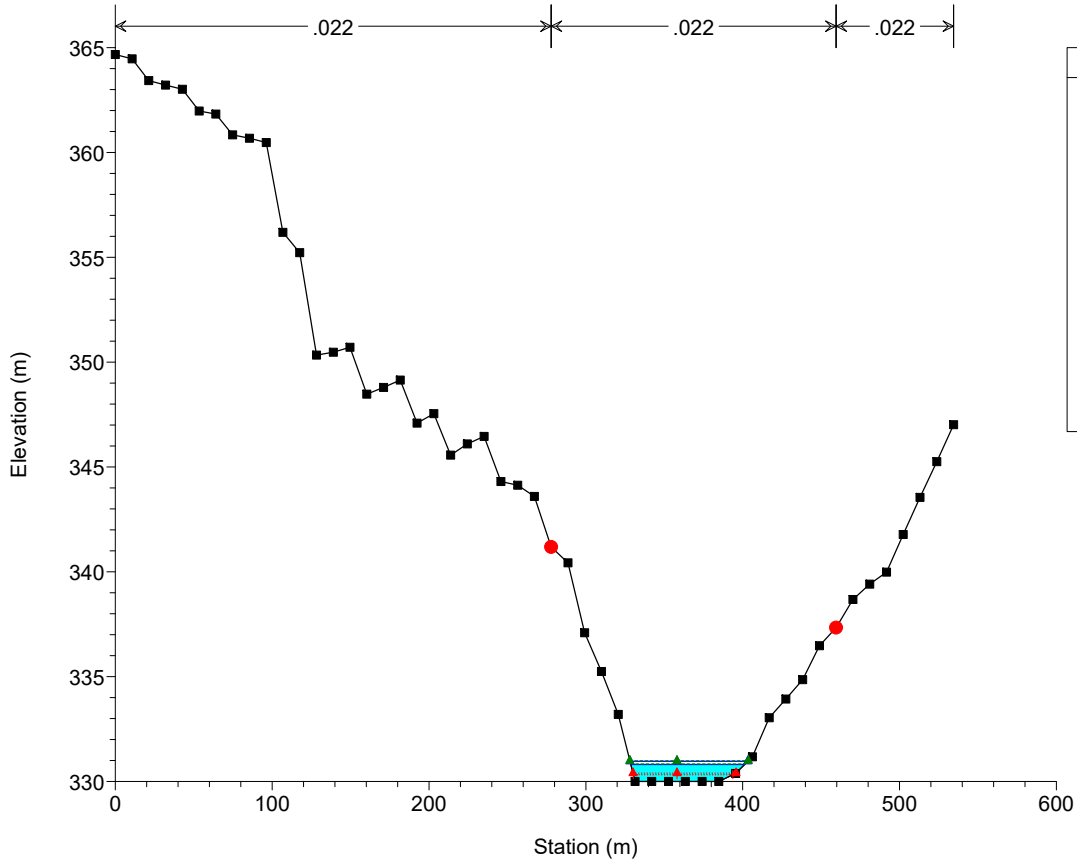


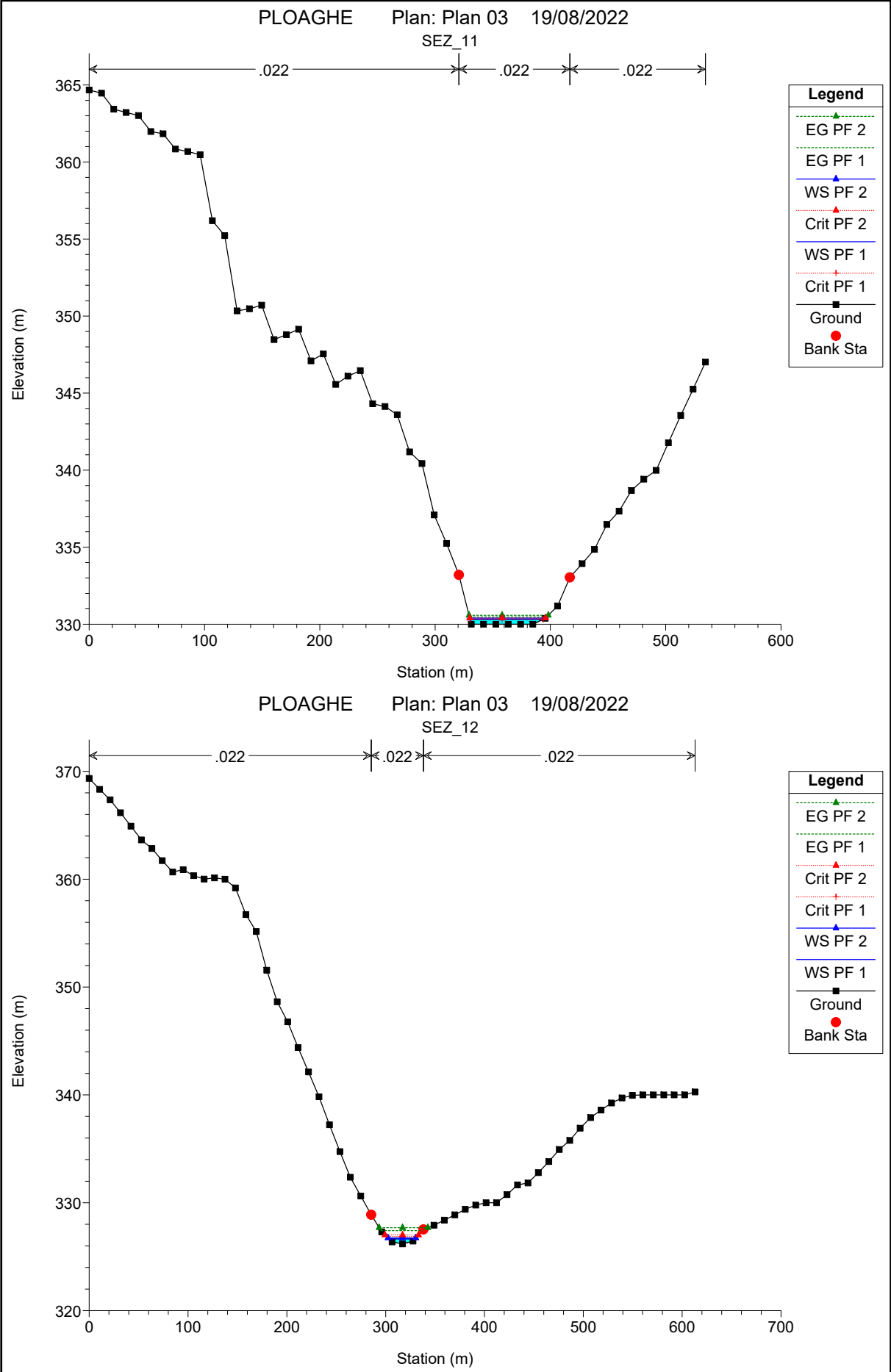


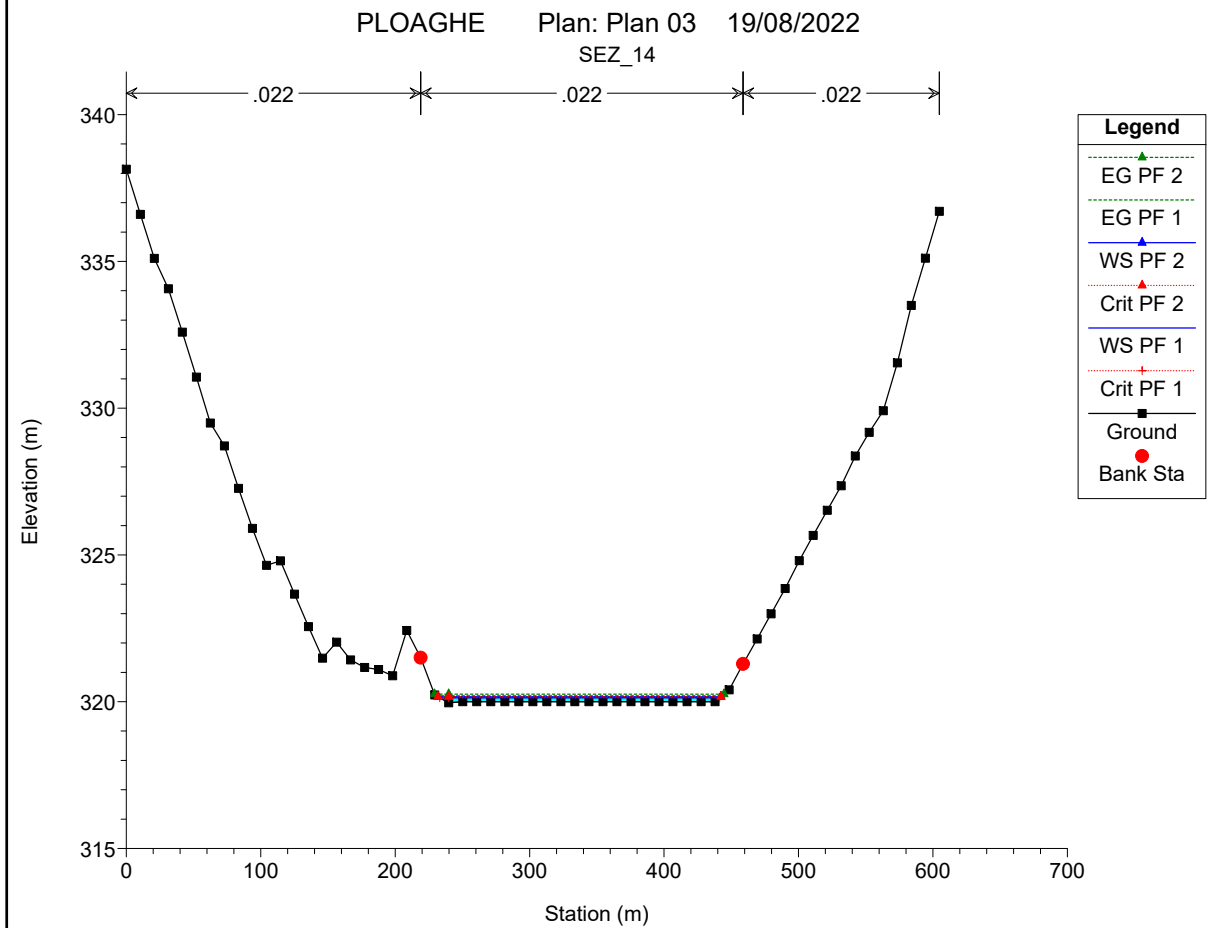
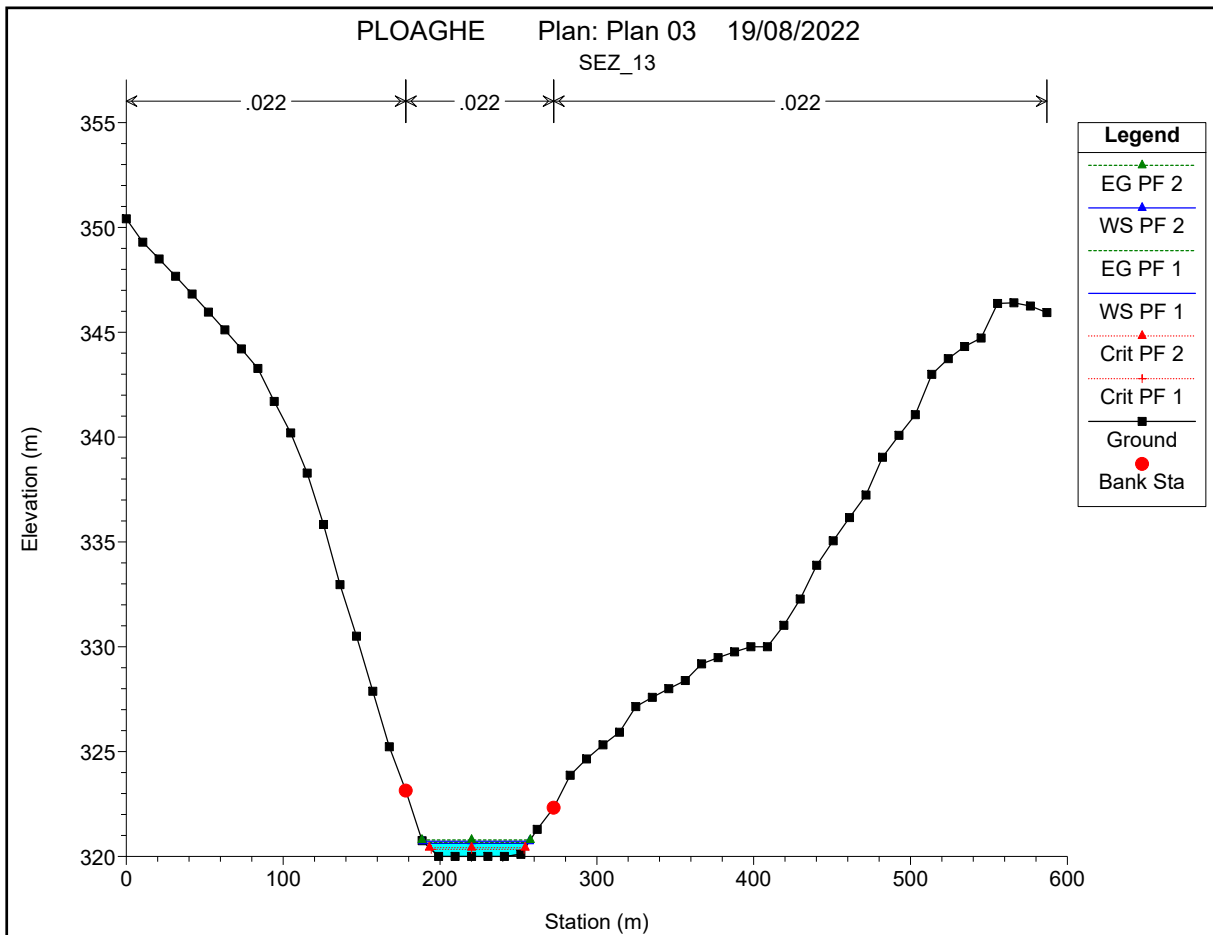
PLOAGHE Plan: Plan 03 19/08/2022  
SEZ\_9

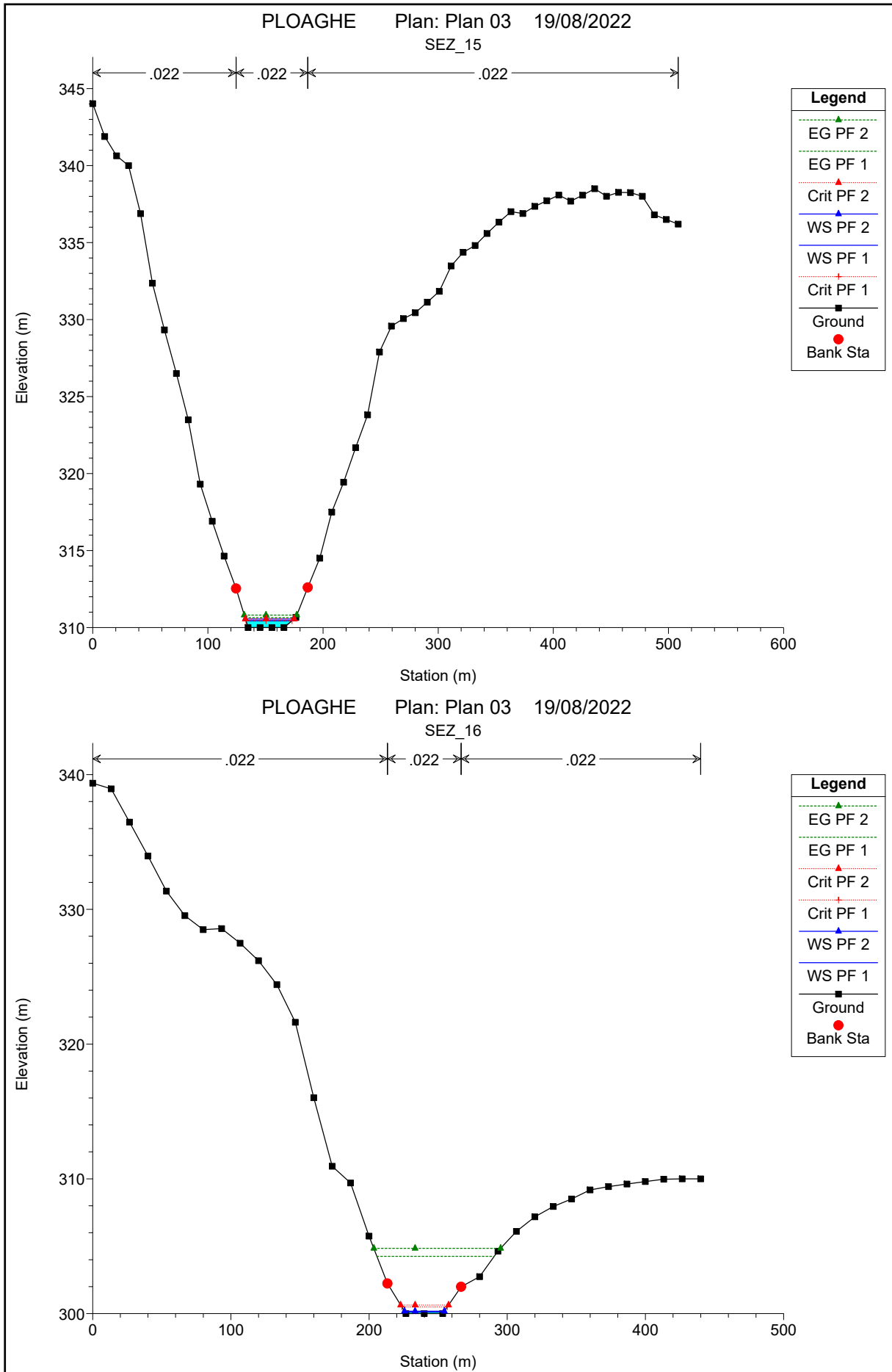


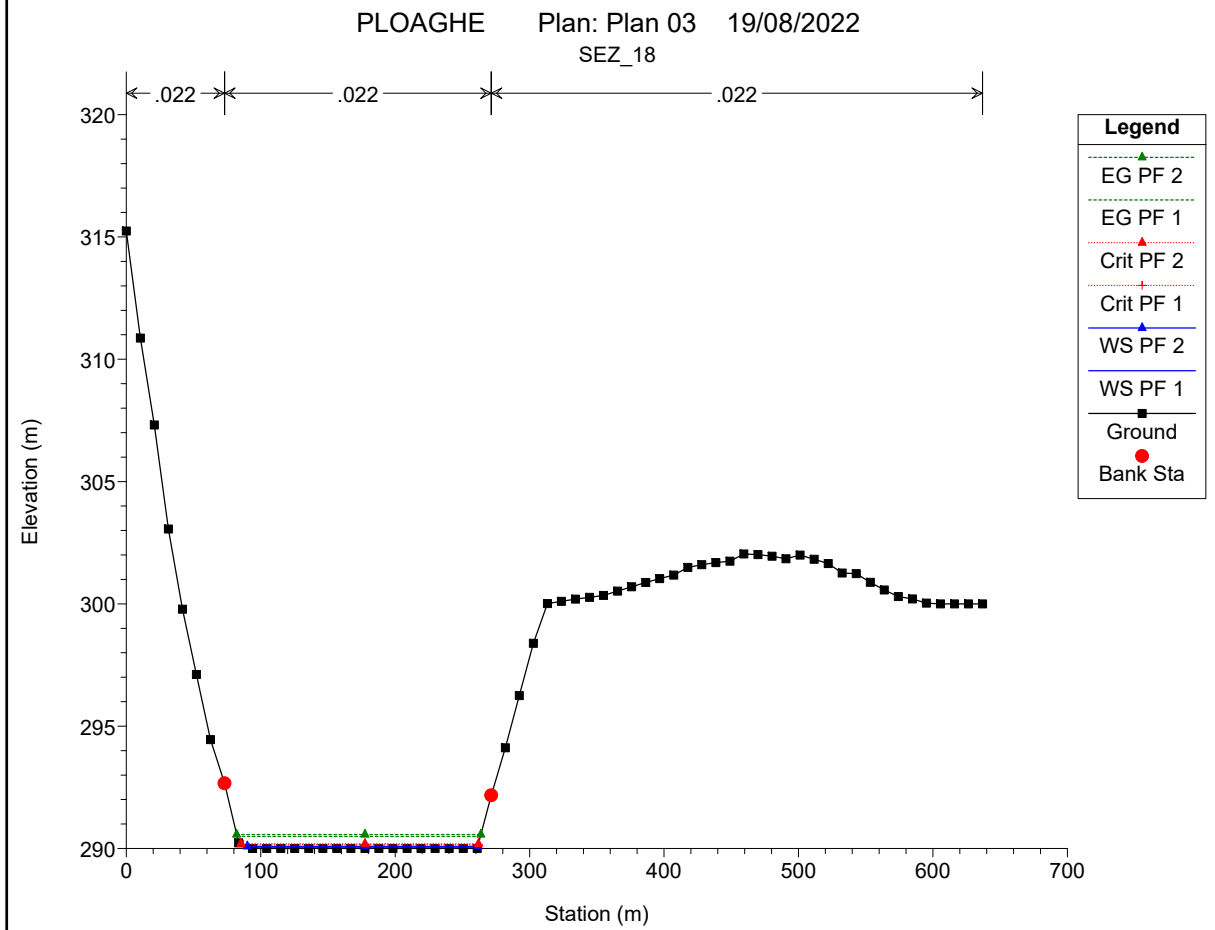
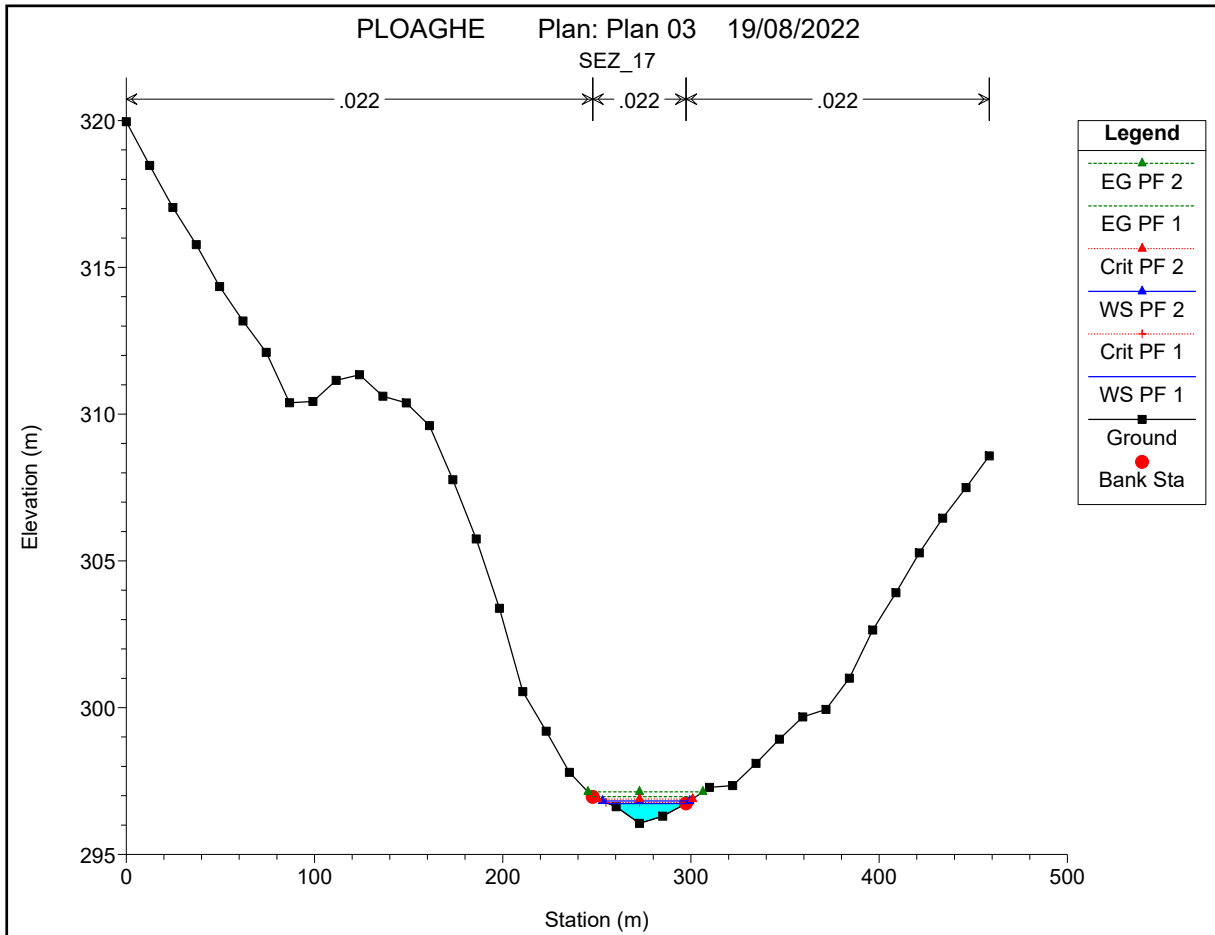
PLOAGHE Plan: Plan 03 19/08/2022  
SEZ\_10

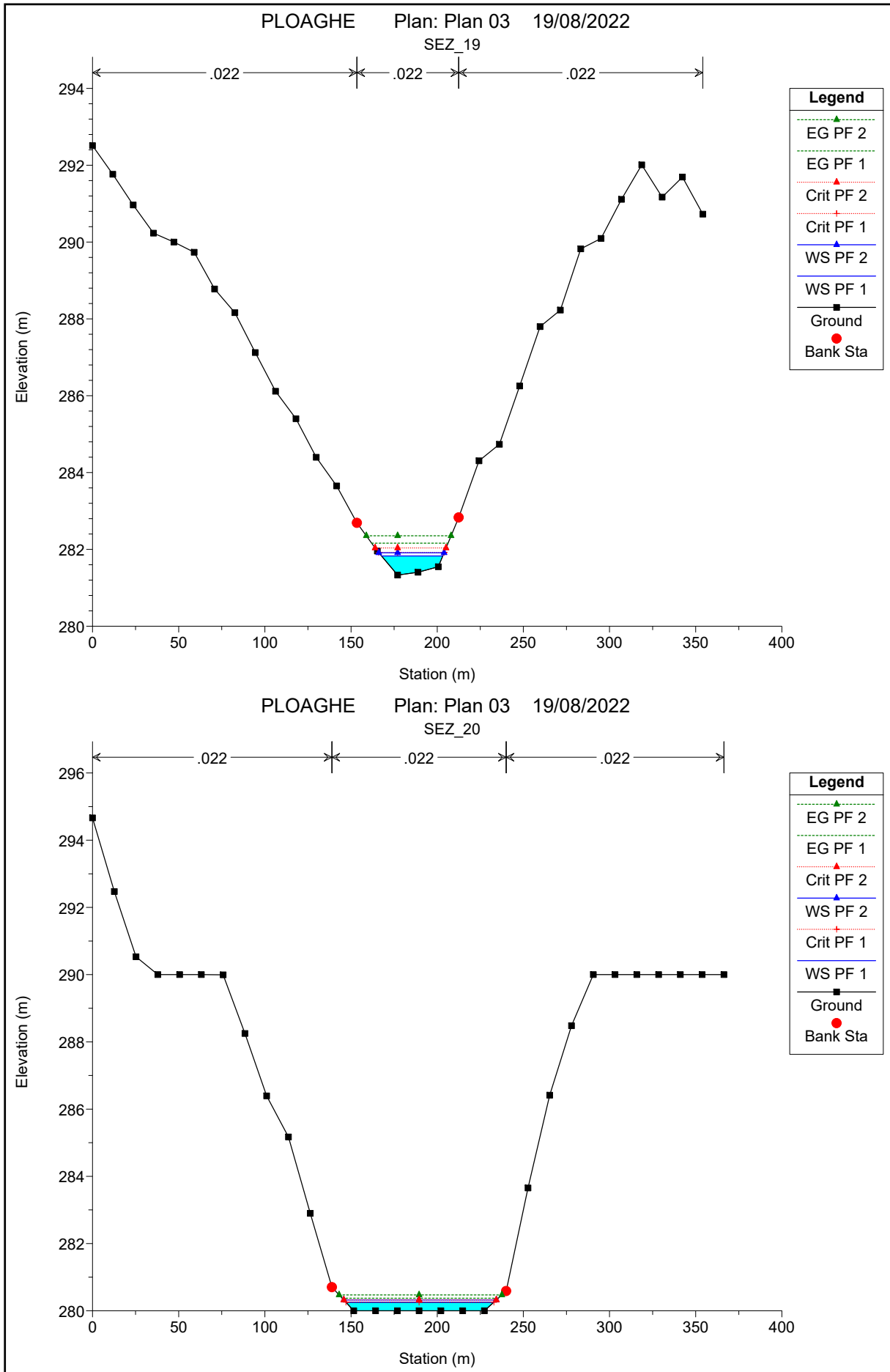




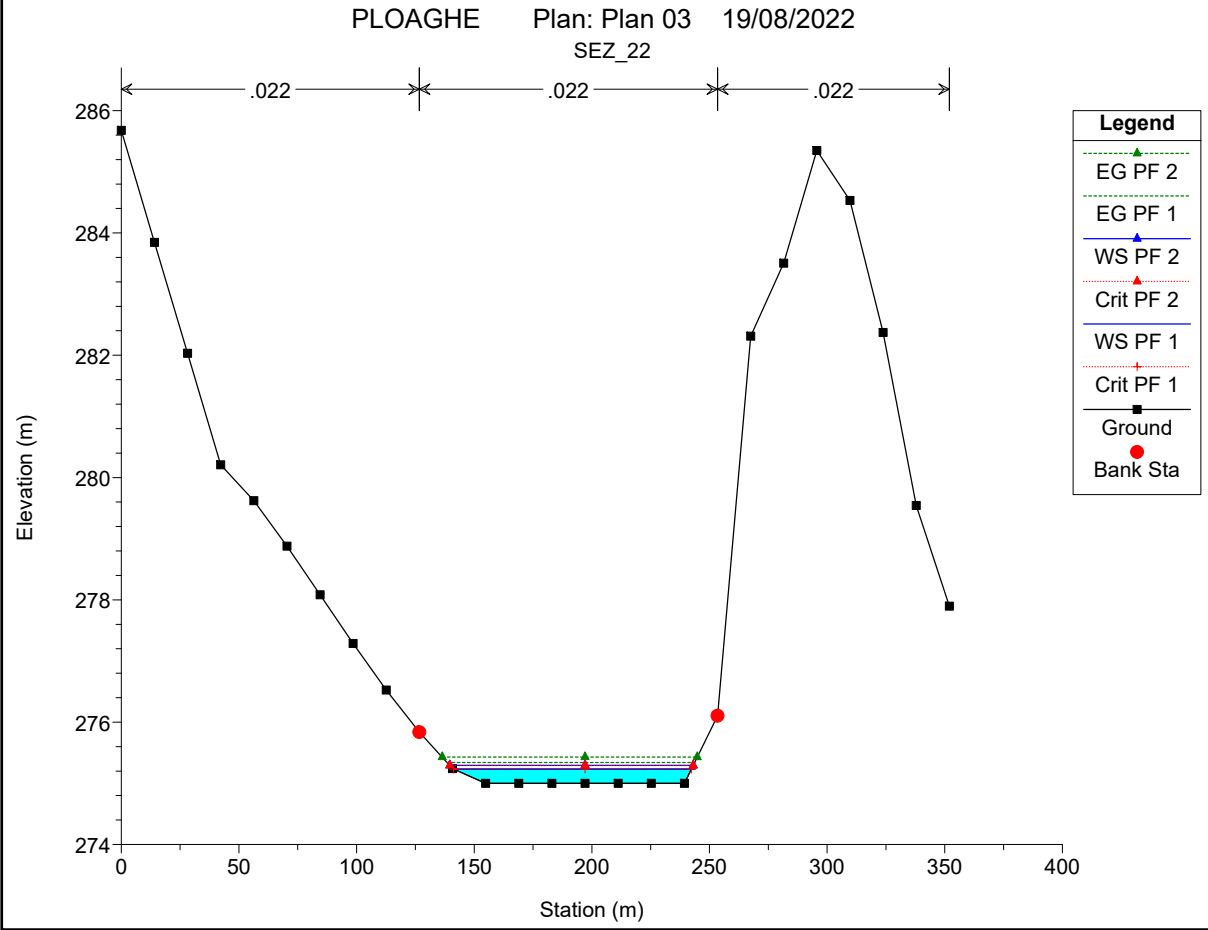
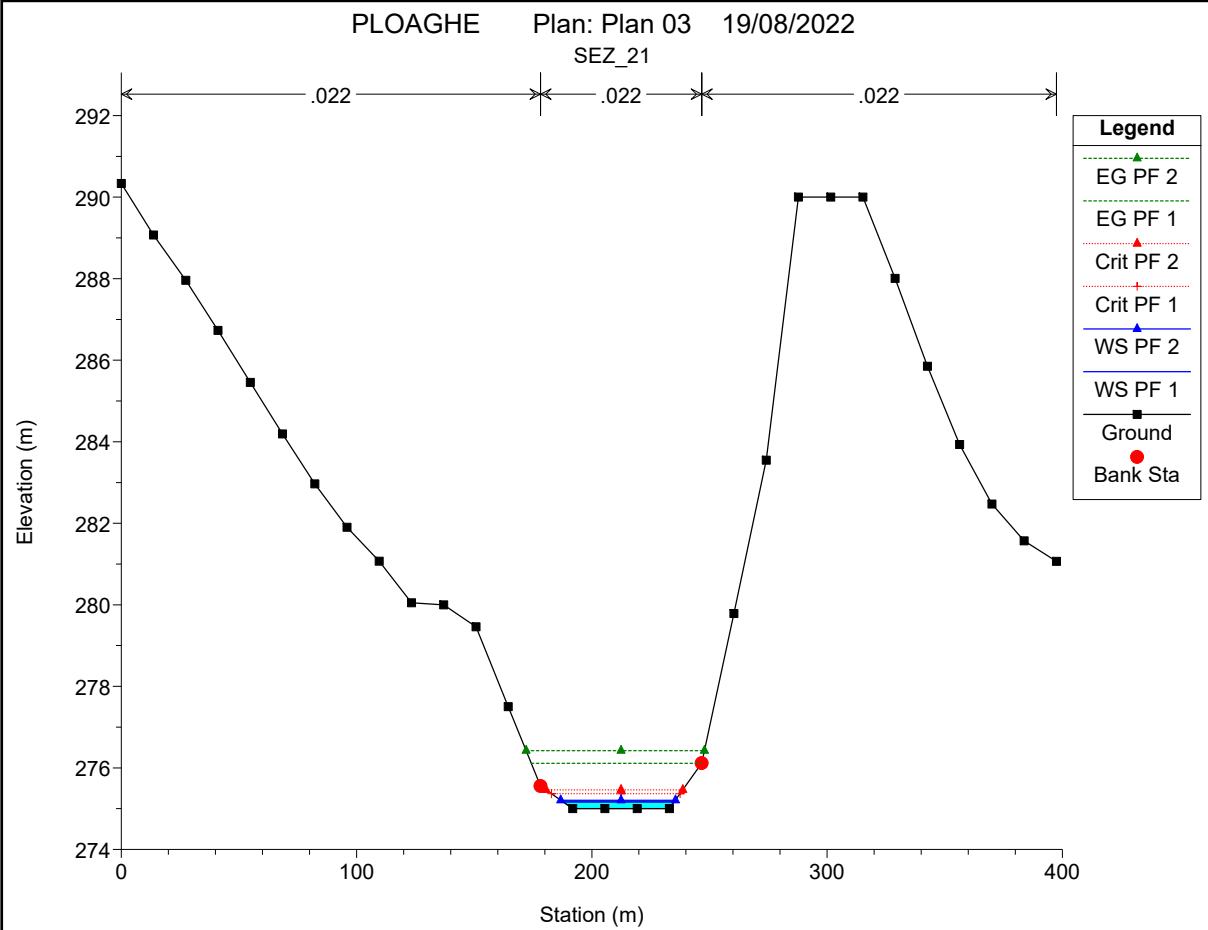












HEC-RAS Plan:

Reach	River Sta	Profile	Q Total (m3/s)	Min Ch El (m)	W.S. Elev (m)	Crit W.S. (m)	E.G. Elev (m)	E.G. Slope (m/m)	Vel Chnl (m/s)	Flow Area (m2)	Top Width (m)	Froude # Chl
BODU RIU	2000	PF 1	31.43	557.12	557.91	557.91	558.12	0.006550	2.04	15.42	37.25	1.01
BODU RIU	2000	PF 2	45.16	557.12	558.04	558.04	558.28	0.006212	2.17	20.78	43.84	1.01
BODU RIU	1990	PF 1	31.43	483.28	484.19	484.19	484.48	0.005797	2.39	13.14	22.78	1.01
BODU RIU	1990	PF 2	45.16	483.28	484.37	484.37	484.71	0.005515	2.60	17.38	25.59	1.01
BODU RIU	1980	PF 1	31.43	443.44	444.23	444.23	444.47	0.006176	2.20	14.31	29.63	1.01
BODU RIU	1980	PF 2	45.16	443.44	444.37	444.37	444.66	0.005792	2.39	18.90	32.86	1.01
BODU RIU	1970	PF 1	31.43	417.47	417.73	418.12	432.63	2.241557	17.10	1.84	14.59	15.38
BODU RIU	1970	PF 2	45.16	417.47	417.77	418.22	433.40	2.112233	17.51	2.58	18.89	15.13
BODU RIU	1960	PF 1	31.43	400.00	400.28	400.40	400.69	0.021426	2.82	11.16	40.50	1.71
BODU RIU	1960	PF 2	45.16	400.00	400.35	400.51	400.89	0.021890	3.26	13.87	41.06	1.79
BODU RIU	1950	PF 1	31.43	389.90	390.08	390.18	390.44	0.049638	2.67	11.79	87.34	2.32
BODU RIU	1950	PF 2	45.16	389.90	390.11	390.24	390.58	0.048698	3.02	14.97	90.69	2.37
BODU RIU	1940	PF 1	31.43	370.94	371.38	371.71	372.85	0.075299	5.38	5.85	20.62	3.23
BODU RIU	1940	PF 2	45.16	370.94	371.46	371.87	373.28	0.074027	5.98	7.55	22.41	3.29
BODU RIU	1930	PF 1	31.43	360.00	360.21	360.32	360.58	0.029599	2.70	11.64	57.29	1.91
BODU RIU	1930	PF 2	45.16	360.00	360.25	360.40	360.76	0.030669	3.14	14.37	57.84	2.01
BODU RIU	1920	PF 1	31.43	349.88	350.17	350.30	350.61	0.027895	2.92	10.76	45.06	1.91
BODU RIU	1920	PF 2	45.16	349.88	350.23	350.40	350.79	0.026928	3.31	13.65	46.18	1.94
BODU RIU	1910	PF 1	31.43	330.00	330.81	330.32	330.83	0.000271	0.60	52.34	72.63	0.23
BODU RIU	1910	PF 2	45.16	330.00	330.96	330.40	330.99	0.000308	0.71	63.45	75.14	0.25
BODU RIU	1900	PF 1	31.43	330.00	330.32	330.32	330.46	0.007264	1.70	18.47	63.43	1.01
BODU RIU	1900	PF 2	45.16	330.00	330.40	330.40	330.58	0.006749	1.90	23.81	65.73	1.01
BODU RIU	1890	PF 1	31.43	326.19	326.65	326.87	327.41	0.034829	3.87	8.13	26.38	2.22
BODU RIU	1890	PF 2	45.16	326.19	326.73	327.01	327.69	0.034144	4.33	10.43	28.17	2.27
BODU RIU	1880	PF 1	31.43	320.00	320.63	320.34	320.66	0.000811	0.87	36.18	65.76	0.37
BODU RIU	1880	PF 2	45.16	320.00	320.73	320.42	320.78	0.000985	1.05	43.02	68.09	0.42
BODU RIU	1870	PF 1	31.43	319.96	320.13	320.13	320.20	0.009387	1.14	27.52	208.33	1.00
BODU RIU	1870	PF 2	45.16	319.96	320.17	320.17	320.25	0.008739	1.29	35.10	210.70	1.01
BODU RIU	1860	PF 1	31.43	310.00	310.45	310.45	310.65	0.006531	1.98	15.87	40.01	1.00
BODU RIU	1860	PF 2	45.16	310.00	310.56	310.56	310.81	0.006127	2.20	20.56	42.27	1.01
BODU RIU	1850	PF 1	31.43	300.00	300.13	300.50	304.25	0.634927	8.99	3.50	28.27	8.16
BODU RIU	1850	PF 2	45.16	300.00	300.17	300.63	304.85	0.496243	9.58	4.72	28.81	7.56
BODU RIU	1840	PF 1	31.43	296.06	296.74	296.77	296.97	0.008886	2.15	14.64	41.30	1.15
BODU RIU	1840	PF 2	45.16	296.06	296.82	296.89	297.13	0.009674	2.47	18.34	46.37	1.23
BODU RIU	1830	PF 1	31.43	290.00	290.06	290.15	290.49	0.158621	2.89	10.87	170.34	3.65
BODU RIU	1830	PF 2	45.16	290.00	290.09	290.19	290.57	0.121479	3.08	14.68	171.48	3.36
BODU RIU	1820	PF 1	31.43	281.33	281.83	281.92	282.16	0.013133	2.56	12.27	35.55	1.39
BODU RIU	1820	PF 2	45.16	281.33	281.91	282.04	282.35	0.014062	2.95	15.33	37.88	1.48
BODU RIU	1810	PF 1	31.43	280.00	280.25	280.25	280.37	0.007723	1.54	20.47	85.83	1.00
BODU RIU	1810	PF 2	45.16	280.00	280.32	280.32	280.47	0.007192	1.72	26.30	88.49	1.01
BODU RIU	1800	PF 1	31.43	275.00	275.17	275.37	276.11	0.108457	4.31	7.29	47.22	3.50
BODU RIU	1800	PF 2	45.16	275.00	275.21	275.46	276.42	0.106022	4.89	9.24	48.72	3.58
BODU RIU	1790	PF 1	31.43	275.00	275.23	275.23	275.34	0.008011	1.45	21.61	101.03	1.00
BODU RIU	1790	PF 2	45.16	275.00	275.29	275.29	275.43	0.007457	1.63	27.70	103.49	1.01