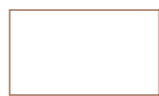
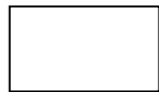
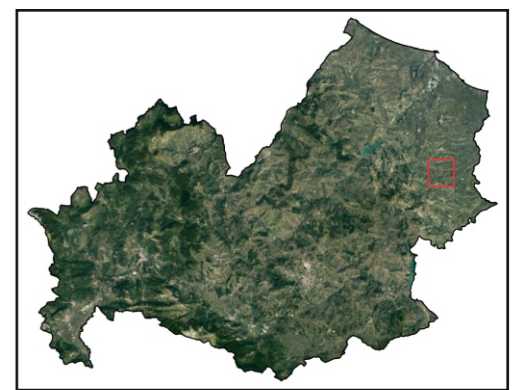
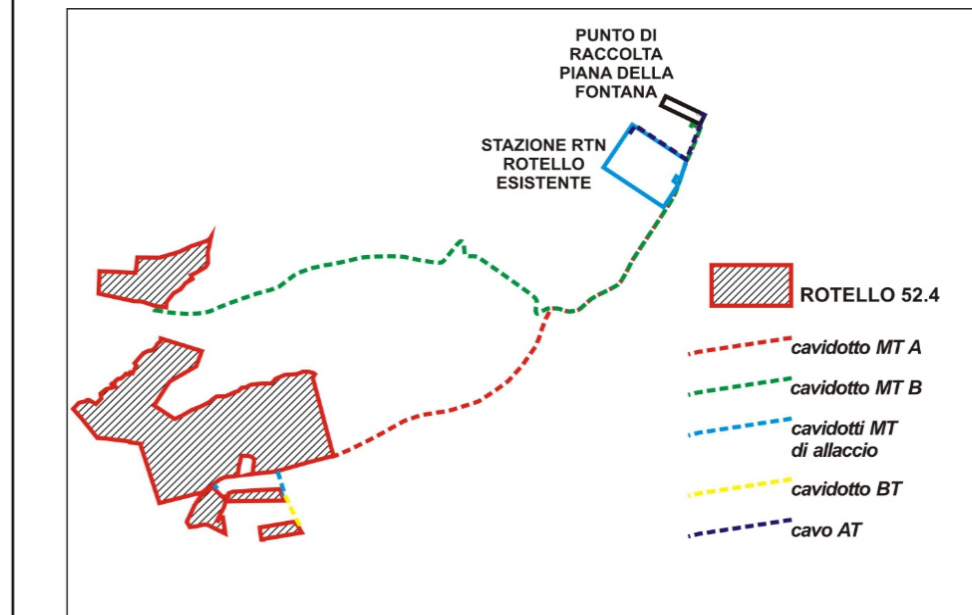








LEGENDA

-  Limite ISTAT Comuni
-  Limite ISTAT Regioni



Sfondo Immagine Satellitare

	GREEN VENTURE ROTELLO S.R.L. P.IVA 02324040688, Viale Giorgio Ribotta 21, 00144 Roma Italia PEC greenventurerotello@pec.it	REGIONE	MOLISE
		PROVINCIA	CAMPOBASSO
		COMUNI	ROTELLO
PROGETTO			
Impianto Agrivoltaiico Rotello 52.4			
Identificatore	Titolo	Scala	Data
ROTS2FV_05_Rev01	Inquadramento su Ortofotocarta	1:25.000	Giugno 2023
PROFESSIONISTI		Firma digitale	
Dott. Geologo Giancarlo Rocco Di Bernardino g.diberardino@proes.it			
Dotto.ssa Biologa Claudia Nuzzi c.nuzzi@proes.it			
RESPONSABILE TECNICO PROES SRL Ing. Maurizio Elisio m.elisio@proes.it			
			
PROPONENTE		Firma digitale	
Green Venture Rotello S.r.l.			