

Table with columns: LIMITI TERRITORIALI, LIVELLE, SF. DI QUOTA, COMUNE DI CALTANISSETTA (CL), and vertical scale information.

AGRIGENTO and AUTOSTRADA A19 labels with arrows indicating direction.

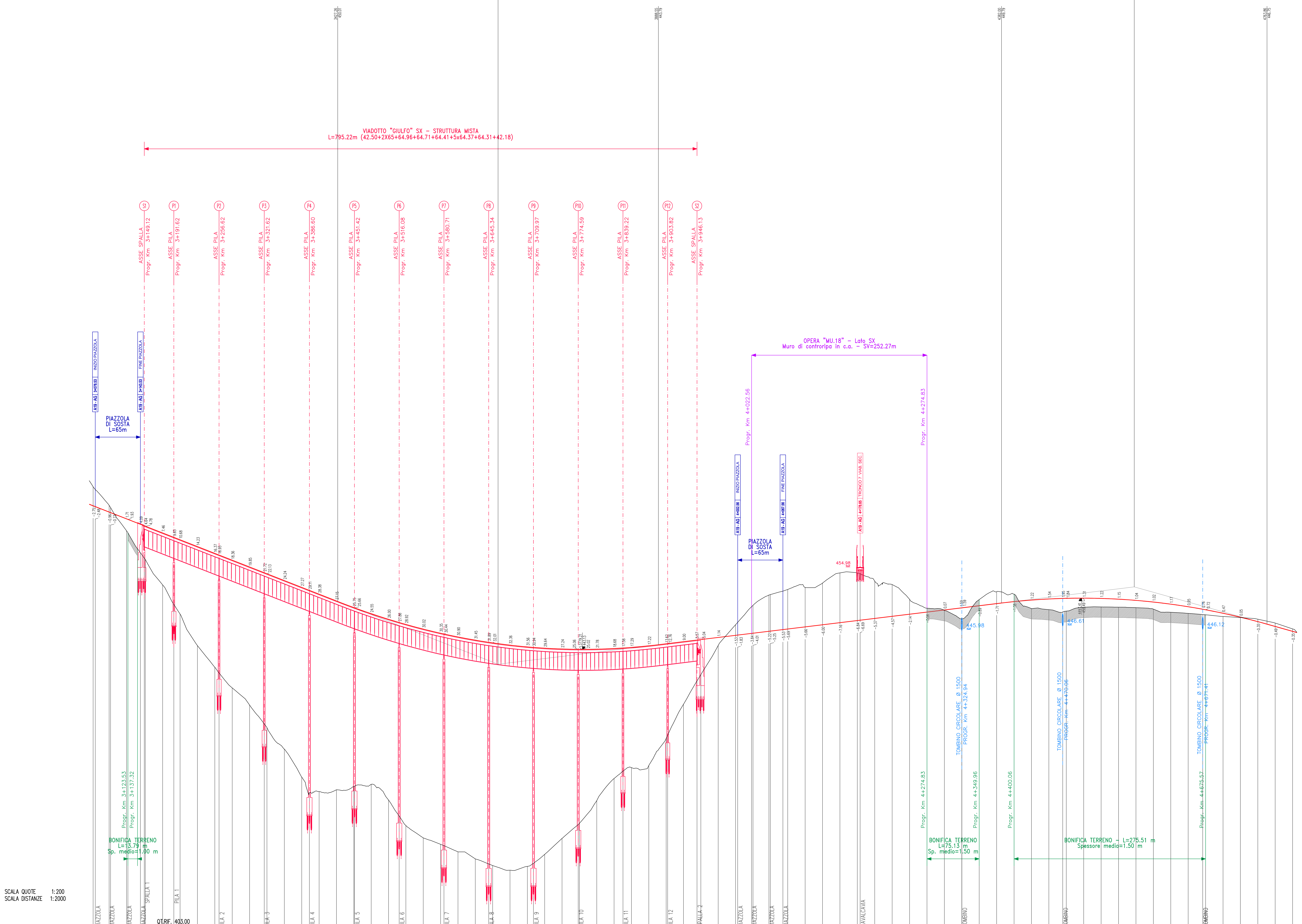


Table with 6 columns: NUMERO SEZIONI, DISTANZE PARZIALI, DISTANZE PROGRESSIVE, QUOTE TERRENO, QUOTE PROGETTO, ETOMETRICHE, ANDAMENTO PLANIMETRICO, and ANDAMENTO CIGLI.

Project information block including ANAS S.p.A. logo, project name 'CORRIDOIO PLURIMODALE TIRRENICO-NORD EUROPA', and list of project and design responsibilities.

Table with project metadata including CODICE PROGETTO, FOGLIO, and SCALA.