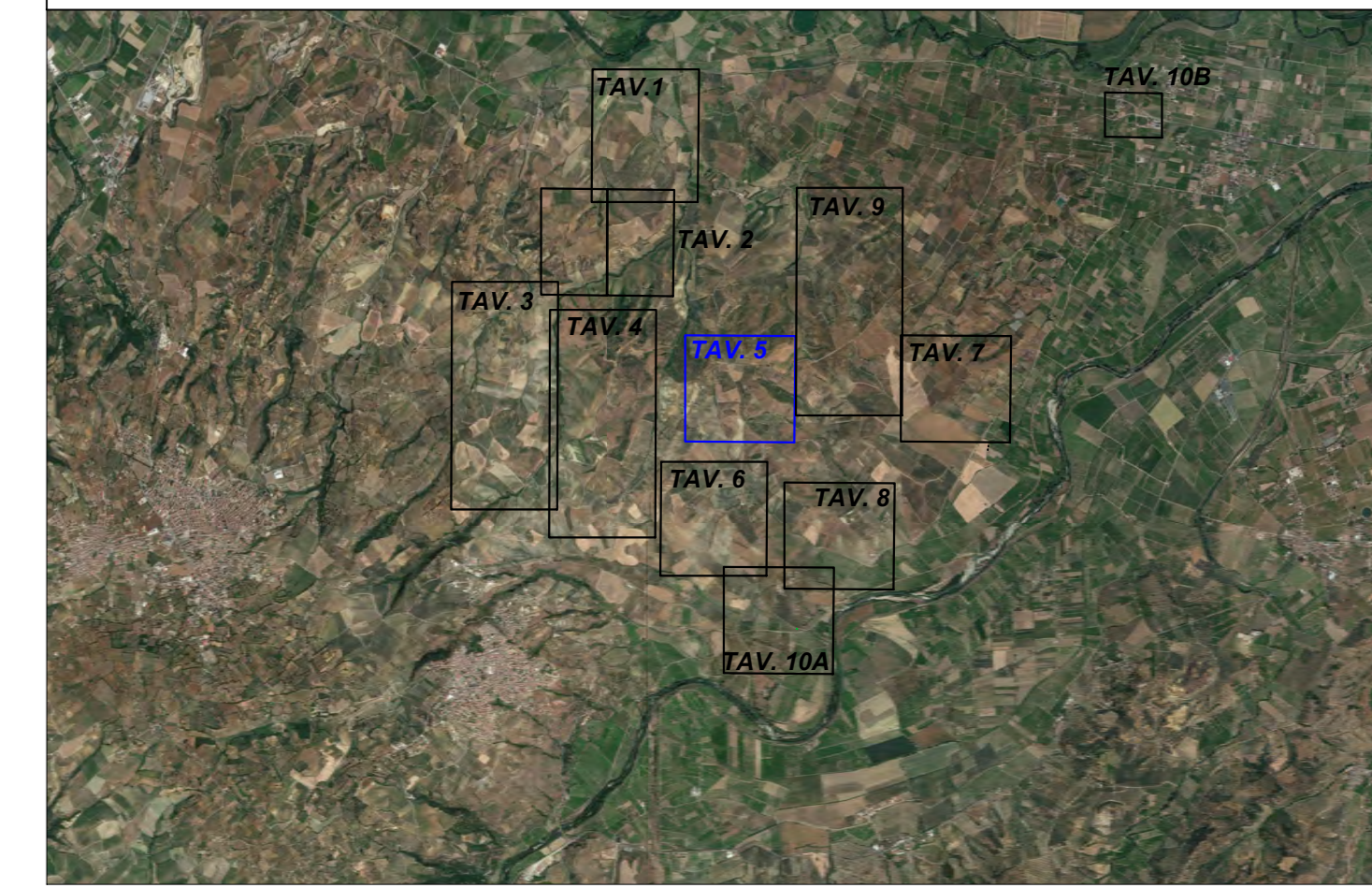

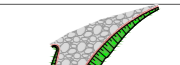





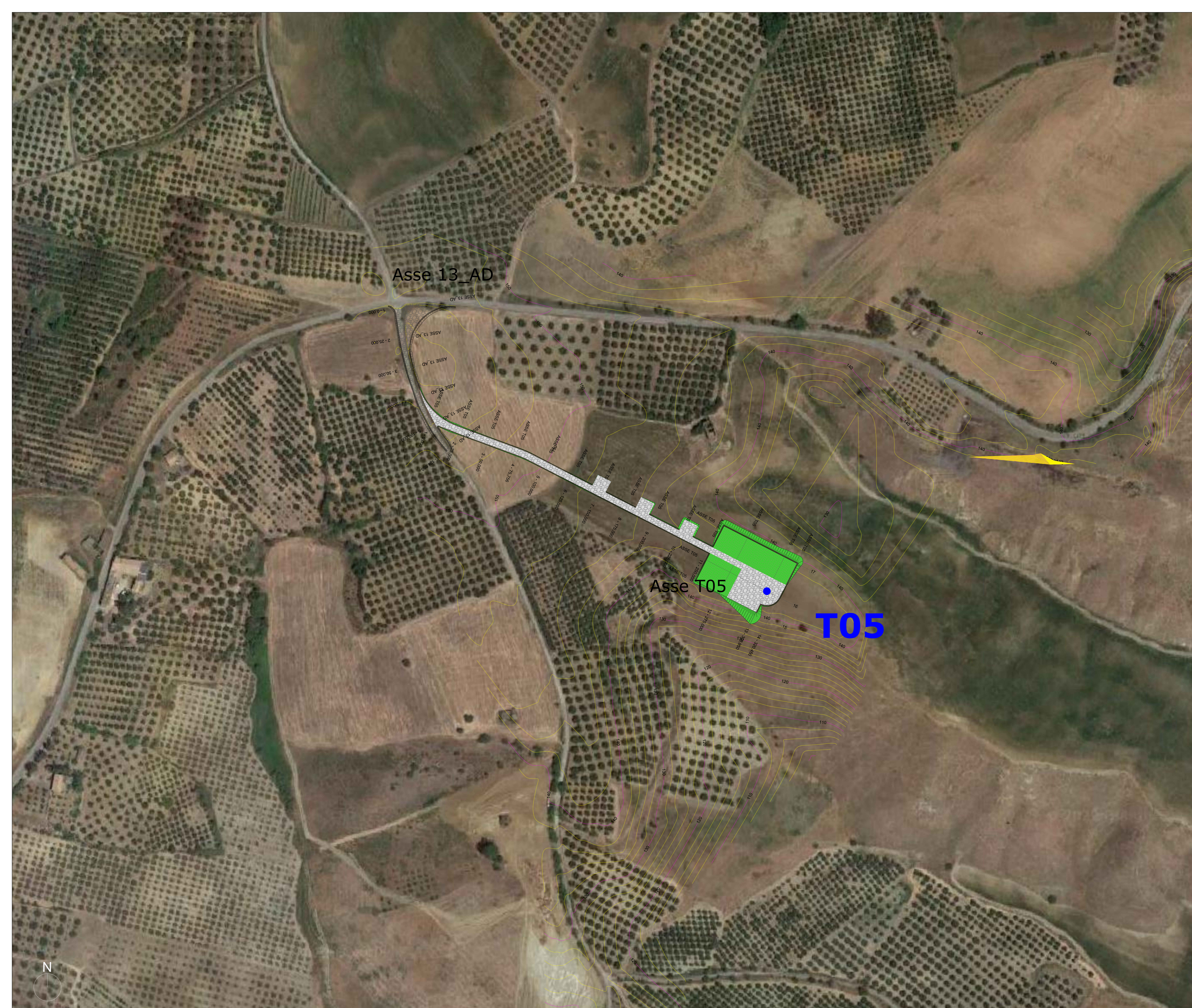


### Key-Map



### LEGENDA

-  Posizione Aerogeneratori
-  Nuova Viabilità
-  Adeguamento della viabilità esistente (Asse x AD)
-  Curve di livello intervallo 10,00 mt.
-  Aree rinverdite
-  Aree in misto stabilizzato
-  Curve di livello intervallo 2,00 mt.






Regione CALABRIA



Comune di CORIGLIANO-ROSSANO



Comune di TERRANOVA DA SIBARI

Committente:  PLT RE s.r.l.  
 via Corso Don Giuliano Botolacci 51  
 47521 Cesena (FC)  
 P.IVA/C.F. 04483450401

TITOLO del Progetto: **PARCO EOLICO "TERRANOVA"**

Documento: **Progetto Definitivo** N° Documento: **W-TER-P-VB-PP-15**

ID PROGETTO: **W-TER** DISCIPLINA: **P** AMBITO: **VB** FORMATO: **A0+1**

Elaborato: **Planimetria particolareggiata viabilità e Piazzole assi T05 - asse 13\_AD**

SCALA: **1:1000** Nome file: **W-TER-P-VB-PP-15\_Planimetria particolareggiata viabilità e Piazzole assi T05 - asse 13\_AD**

Progettazione:

 Ing. Saverio Pagliuso

Ing. Mario Francesco Perri

Ing. Giorgio Salatino

Ing. Claudio Coscarella

Rev.	Data Revisione	Descrizione Revisione	Redatto	Controllato	Approvato
00	FEBBRAIO 2023	PRIMA EMISSIONE	GEMSA	GEMSA	PLT RE