



REGIONE  
SICILIA



PROVINCIA  
DI TRAPANI



COMUNE  
DI MARSALA



COMUNE  
DI SALEMI



COMUNE  
DI MAZARA DEL VALLO

OGGETTO:

**Progetto di realizzazione di un parco eolico della potenza di 39.6 MW  
denominato "CE PARTANNA II"  
situato nei comuni di Marsala, Salemi e Mazara del Vallo  
provincia di Trapani (TP)**

ELABORATO:

**RELAZIONE DELLA VISIBILITA' TEORICA E DEGLI IMPATTI  
CUMULATIVI**



PROPONENTE:

**AEI WIND  
PROJECT IV S.R.L.**

P.I. 16805241003  
Via Vincenzo Bellini,  
22 00198 Roma

C.F. e n. iscriz. REG. IMPR.: 16805241003  
REA: RM\_1676856  
PEC: aewind.quarta@legalmail.it

PROGETTAZIONE:

Ing. Carmen Martone  
Iscr. n.1872  
Ordine Ingegneri Potenza  
C.F MRTCMN73D56H703E



Geol. Raffaele Nardone  
Iscr. n. 243  
Ordine Geologi Basilicata  
C.F NRDRFL71H04A509H

EGM PROJECT S.R.L.  
VIA VERRASTRO 15/A  
85100- POTENZA (PZ)  
P.IVA 02094310766  
REA PZ-206983

Livello prog.	Cat. opera	N°. prog.elaborato	Tipo elaborato	N° foglio/Tot. fogli	Nome file	Scala
PD	I.IE	56	R		RS06SIA0006A0.PDF	
REV.	DATA	DESCRIZIONE		ESEGUITO	VERIFICATO	APPROVATO
00	APRILE 2023	Emissione			Ing. Carmen Martone EGM Project	Ing. Carmen Martone EGM Project

Project:  
Partanna 2

Description:  
D.M. 10-9-2010 - Linee guida per l'autorizzazione degli impianti alimentati da fonti rinnovabili.  
-  
3.2. Misure di mitigazione  
Si segnalano di seguito alcune possibili misure di mitigazione:  
[-.]:  
e) si dovrà esaminare l'effetto visivo provocato da un'alta densità di aerogeneratori relativi ad un singolo parco eolico o a parchi eolici adiacenti; tale effetto deve essere in particolare esaminato e attenuato rispetto ai punti di vista o di belvedere, accessibili al pubblico, di cui all'articolo 136, comma 1, lettera d), del Codice, distanti in linea d'aria non meno di 50 volte l'altezza massima del più vicino aerogeneratore.  
[-.]:\*  
Altezza totale del modello di autogeneratori: 220 m.  
Buffer da ogni aerogeneratore per il calcolo dell'intervisibilità teorica: 220 m\*50=11.000 m.

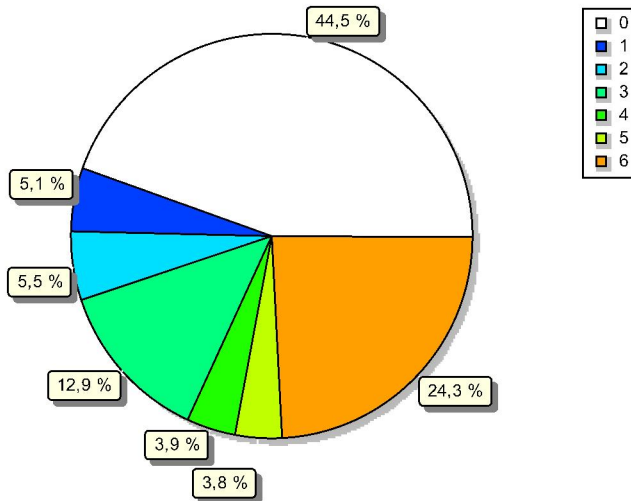
Licensed user:  
EGM Project srl  
via Vincenzo Verrastro 15/A  
IT-85100 Potenza

Girolamo / marsilio@egmproject.it  
Calculated:  
08/03/2023 11:32/3.6.361

## ZVI - Standard ZVI summary

Calculation: Visibilità teorica Partanna 2

Area with specific number of WTGs visible



New WTG

### Assumptions for ZVI calculation

WTG areas	11k Partanna 2
Calculation step	25 m
Eye height	1,7 m
Calculation area	50.078 ha
WTG Calculation height	Hub height
Obstacles used in calculation	0
DHM object	Elevation Grid Data Object: Partanna 2_EMDGrid_5.wpg (21)
No area objects used in calculation	
No grid objects used in calculation	
New WTGs used in calculation	6
Existing WTGs used in calculation	0

No maximum distance to WTG

### ZVI Results

WTGs visible	Area [ha]	Area [%]
0	22.297	44,5
1	2.540	5,1
2	2.762	5,5
3	6.473	12,9
4	1.947	3,9
5	1.879	3,8
6	12.180	24,3

### WTGs

Valid	Manufact.	Type-generator	Power, rated [kW]	Rotor diameter [m]	Hub height [m]	Easting	Northing	Z [m]
1	Yes	Siemens Gamesa SG 6.6-170-6.600	6.600	170,0	135,0	294.717	4.185.053	121,6
2	Yes	Siemens Gamesa SG 6.6-170-6.600	6.600	170,0	135,0	295.830	4.185.303	155,6
3	Yes	Siemens Gamesa SG 6.6-170-6.600	6.600	170,0	135,0	295.565	4.184.727	131,3
4	Yes	Siemens Gamesa SG 6.6-170-6.600	6.600	170,0	135,0	297.629	4.187.905	236,2
5	Yes	Siemens Gamesa SG 6.6-170-6.600	6.600	170,0	135,0	298.272	4.188.196	269,3
6	Yes	Siemens Gamesa SG 6.6-170-6.600	6.600	170,0	135,0	298.862	4.188.457	299,1



Project:  
Partanna 2

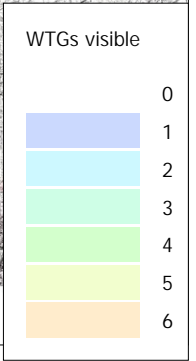
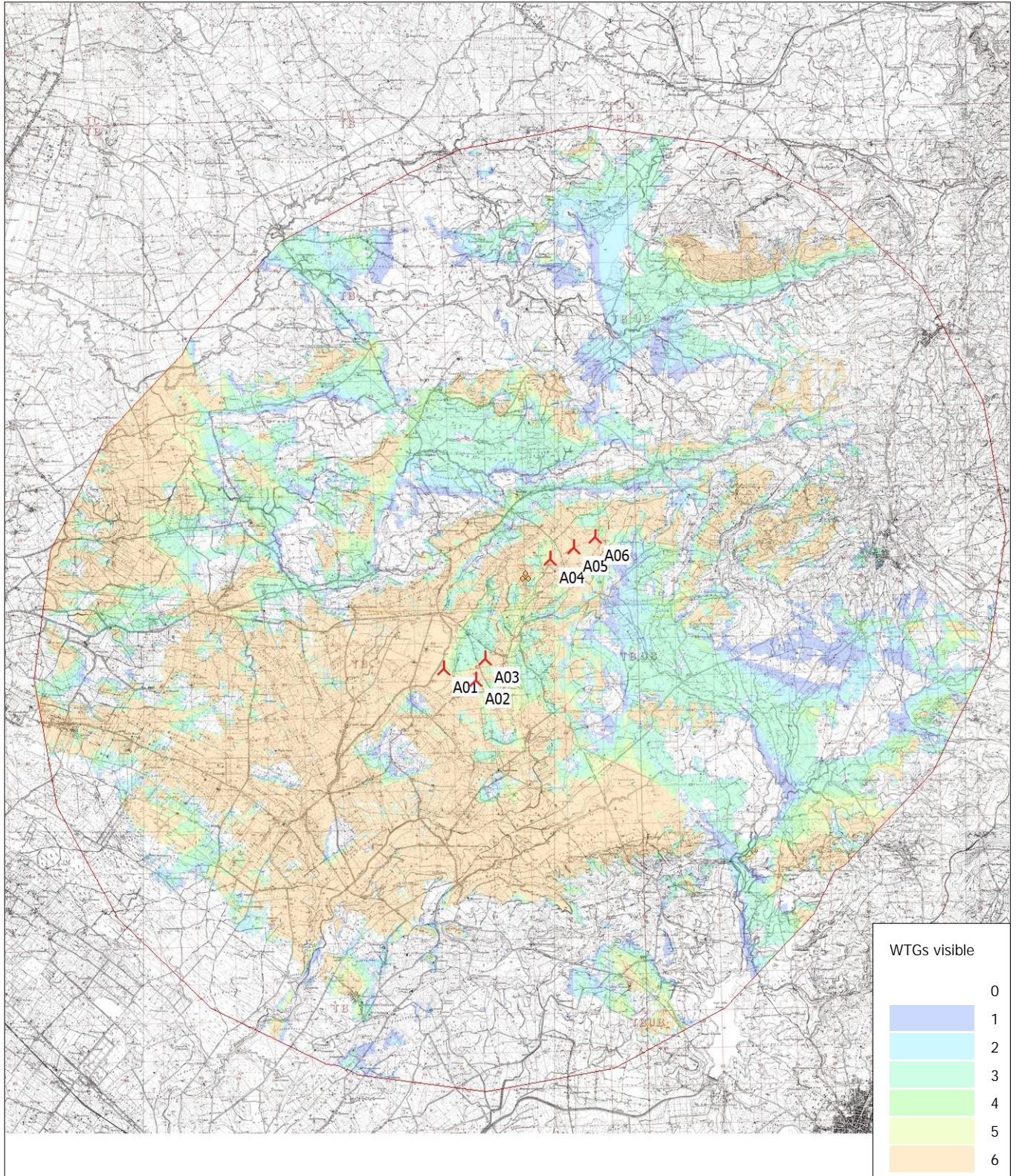
Description:  
D.M. 10-9-2010 - Linee guida per l'autorizzazione degli impianti alimentati da fonti rinnovabili.  
3.2. Misure di mitigazione  
Si segnalano di seguito alcune possibili misure di mitigazione:  
[-.].  
e) si dovrà esaminare l'effetto visivo provocato da un'alta densità di aerogeneratori relativi ad un singolo parco eolico o a parchi eolici adiacenti: tale effetto deve essere in particolare esaminato e attenuato rispetto ai punti di vista o di belvedere, accessibili al pubblico, di cui all'articolo 136, comma 1, lettera d), del Codice, distanti in linea d'aria non meno di 50 volte l'altezza massima del più vicino aerogeneratore.  
[-.].  
Altezza totale del modello di autogeneratori: 220 m.  
Buffer da ogni aerogeneratore per il calcolo dell'intervisibilità teorica: 220 m\*50=11.000 m.

Licensed user:  
EGM Project srl  
via Vincenzo Verrastro 15/A  
IT-85100 Potenza

Girolamo / marsilio@egmproject.it  
Calculated:  
08/03/2023 11:32/3.6.361

## ZVI - Map Standard ZVI summary

Calculation: Visibilità teorica Partanna 2



0 2,5 5 7,5 10km

Map: IGM maps 1:25000, Print scale 1:150.000, Map center UTM (north)-WGS84 Zone: 33 East: 296.830 North: 4.187.461

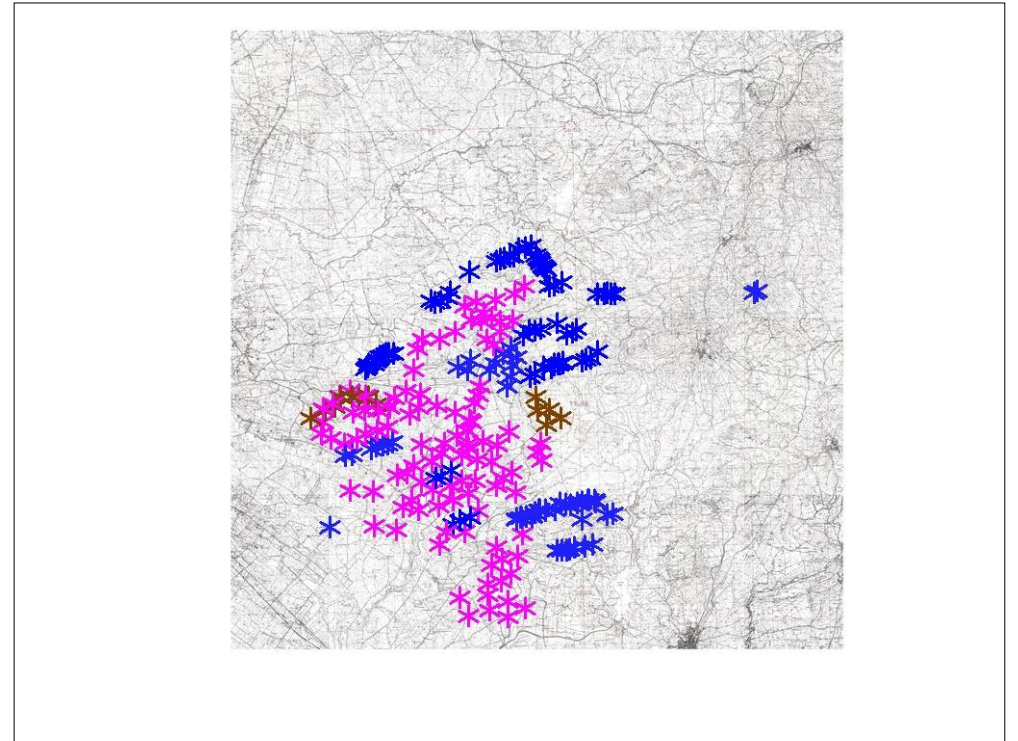
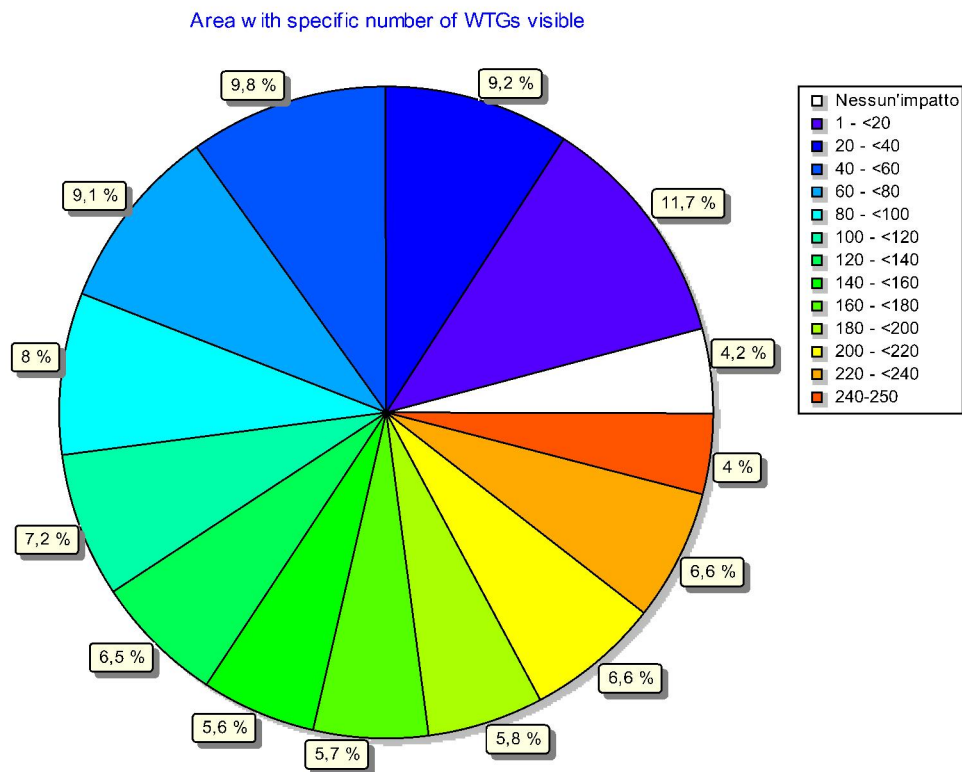
New WTG WTG area

Grid step: 25 m - Eye height: 1,7 m - Calculation height: Total height



## ZVI - Standard ZVI summary

Calculation: Impatto cumulativo Partanna 2 - Stato di fatto



\* Impianti esistenti \* Impianti in fase di autorizzazione \* Impianti autorizzati

### Assumptions for ZVI calculation

WTG areas	11k Partanna 2
Calculation step	25 m
Eye height	1,7 m
Calculation area	50.078 ha
WTG Calculation height	Total height
Obstacles used in calculation	0
DHM object	Elevation Grid Data Object: Partanna 2_EMDGrid_5.wpg (21)
No area objects used in calculation	
No grid objects used in calculation	
New WTGs used in calculation	0
Existing WTGs used in calculation	250

No maximum distance to WTG

### ZVI Results

WTGs visible	Area [ha]	Area [%]
0	2.109	4,2
1	196	0,4
2	2.223	4,4
3	184	0,4
4	257	0,5
5	248	0,5
6	218	0,4
7	164	0,3
8	178	0,4
9	171	0,3
10	182	0,4
11	179	0,4
12	190	0,4
13	198	0,4
14	232	0,5
15	211	0,4
16	217	0,4
17	203	0,4
18	202	0,4
19	210	0,4
20	241	0,5
21	242	0,5
22	237	0,5
23	241	0,5
24	250	0,5
25	258	0,5
25-250	40.896	81,7

### WTGs

Valid	Manufact.	Type-generator	Power, rated [kW]	Rotor diameter [m]	Hub height [m]	Easting	Northing	Z [m]
1 Yes	Siemens Gamesa	SG 6.0-170-6.200	6.200	170,0	115,0	309.327	4.190.775	534,4
2 Yes	Siemens Gamesa	SG 6.0-170-6.200	6.200	170,0	115,0	309.461	4.190.869	521,0
3 Yes	VESTAS	V90-2.000	2.000	90,0	80,0	300.950	4.187.852	277,0
4 Yes	VESTAS	V90-2.000	2.000	90,0	80,0	300.596	4.187.459	278,1
5 Yes	VESTAS	V90-2.000	2.000	90,0	80,0	300.357	4.187.439	262,2
6 Yes	VESTAS	V90-2.000	2.000	90,0	80,0	300.119	4.187.351	250,6
7 Yes	VESTAS	V90-2.000	2.000	90,0	80,0	299.876	4.189.073	326,0
8 Yes	VESTAS	V90-2.000	2.000	90,0	80,0	299.658	4.188.862	319,7
9 Yes	VESTAS	V90-2.000	2.000	90,0	80,0	299.349	4.188.777	307,0
10 Yes	VESTAS	V90-2.000	2.000	90,0	80,0	299.138	4.187.293	275,0
11 Yes	VESTAS	V90-2.000	2.000	90,0	80,0	299.123	4.187.282	275,3
12 Yes	VESTAS	V90-2.000	2.000	90,0	80,0	298.894	4.187.235	275,0
13 Yes	VESTAS	V90-2.000	2.000	90,0	80,0	298.878	4.187.225	275,0
14 Yes	VESTAS	V90-2.000	2.000	90,0	80,0	298.883	4.189.384	300,1
15 Yes	VESTAS	V90-2.000	2.000	90,0	80,0	298.639	4.187.202	275,1
16 Yes	VESTAS	V90-2.000	2.000	90,0	80,0	298.633	4.187.199	275,2
17 Yes	VESTAS	V90-2.000	2.000	90,0	80,0	298.482	4.187.024	273,3
18 Yes	VESTAS	V90-2.000	2.000	90,0	80,0	299.187	4.191.570	255,5
19 Yes	VESTAS	V90-2.000	2.000	90,0	80,0	298.105	4.187.100	254,7
20 Yes	VESTAS	V90-2.000	2.000	90,0	80,0	298.010	4.189.139	279,3
21 Yes	VESTAS	V90-2.000	2.000	90,0	80,0	298.748	4.191.447	278,2
22 Yes	VESTAS	V90-2.000	2.000	90,0	80,0	298.480	4.191.383	305,1
23 Yes	VESTAS	V90-2.000	2.000	90,0	80,0	297.700	4.189.045	272,6
24 Yes	VESTAS	V90-2.000	2.000	90,0	80,0	297.620	4.186.757	252,4
25 Yes	VESTAS	V90-2.000	2.000	90,0	80,0	297.384	4.189.078	253,0
26 Yes	VESTAS	V90-2.000	2.000	90,0	80,0	297.383	4.186.618	226,7
27 No	VESTAS	V52-850	850	52,0	49,0	298.368	4.192.225	277,7
28 Yes	VESTAS	V90-2.000	2.000	90,0	80,0	297.076	4.188.794	253,0
29 No	VESTAS	V52-850	850	52,0	49,0	298.280	4.192.361	302,7
30 No	VESTAS	V52-850	850	52,0	49,0	298.164	4.192.473	305,6

To be continued on next page...



## ZVI - Standard ZVI summary

### Calculation: Impatto cumulativo Partanna 2 - Stato di fatto

...continued from previous page

	Valid	Manufact.	Type-generator	Power, rated [kW]	Rotor diameter [m]	Hub height [m]	Easting	Northing	Z [m]
31	No	VESTAS	V52-850	850	52,0	49,0	298.096	4.192.622	301,5
32	No	VESTAS	V52-850	850	52,0	49,0	298.021	4.192.758	301,0
33	No	VESTAS	V52-850	850	52,0	49,0	297.925	4.192.890	302,1
34	No	VESTAS	V52-850	850	52,0	49,0	297.831	4.193.023	300,2
35	No	REpower	MM 92-2.000	2.000	92,5	100,0	300.629	4.180.005	215,4
36	No	REpower	MM 92-2.000	2.000	92,5	100,0	300.660	4.179.933	204,9
37	No	REpower	MM 92-2.000	2.000	92,5	100,0	300.298	4.180.040	202,7
38	No	REpower	MM 92-2.000	2.000	92,5	100,0	300.271	4.180.034	204,7
39	Yes	VESTAS	V90-2.000	2.000	90,0	80,0	297.568	4.193.520	268,6
40	No	REpower	MM 92-2.000	2.000	92,5	100,0	301.551	4.179.321	176,0
41	No	REpower	MM 92-2.000	2.000	92,5	100,0	299.975	4.179.950	227,1
42	Yes	VESTAS	V90-2.000	2.000	90,0	80,0	297.289	4.193.447	220,9
43	No	REpower	MM 92-2.000	2.000	92,5	100,0	301.265	4.179.243	187,8
44	No	REpower	MM 92-2.000	2.000	92,5	100,0	299.976	4.179.941	227,0
45	No	REpower	MM 92-2.000	2.000	92,5	100,0	299.719	4.179.923	216,7
46	No	REpower	MM 92-2.000	2.000	92,5	100,0	299.704	4.179.924	215,5
47	Yes	VESTAS	V90-2.000	2.000	90,0	80,0	296.950	4.193.410	202,4
48	Yes	VESTAS	V90-2.000	2.000	90,0	80,0	296.662	4.192.999	264,9
49	No	REpower	MM 92-2.000	2.000	92,5	100,0	299.328	4.179.816	201,8
50	No	REpower	MM 92-2.000	2.000	92,5	100,0	299.334	4.179.809	201,5
51	Yes	VESTAS	V90-2.000	2.000	90,0	80,0	296.436	4.192.990	300,9
52	No	REpower	MM 92-2.000	2.000	92,5	100,0	299.073	4.179.883	204,3
53	No	REpower	MM 92-2.000	2.000	92,5	100,0	299.067	4.179.879	203,8
54	Yes	VESTAS	V90-2.000	2.000	90,0	80,0	296.169	4.192.919	306,1
55	No	REpower	MM 92-2.000	2.000	92,5	100,0	298.774	4.179.916	202,0
56	No	REpower	MM 92-2.000	2.000	92,5	100,0	298.785	4.179.900	201,2
57	No	REpower	MM 92-2.000	2.000	92,5	100,0	299.954	4.179.025	179,4
58	Yes	VESTAS	V90-2.000	2.000	90,0	80,0	295.927	4.192.848	303,0
59	Yes	VESTAS	V90-2.000	2.000	90,0	80,0	295.733	4.192.792	296,6
60	No	REpower	MM 92-2.000	2.000	92,5	100,0	298.503	4.179.589	200,3
61	No	REpower	MM 92-2.000	2.000	92,5	100,0	298.495	4.179.584	201,2
62	No	REpower	MM 92-2.000	2.000	92,5	100,0	298.005	4.179.565	152,7
63	No	REpower	MM 92-2.000	2.000	92,5	100,0	298.002	4.179.560	153,0
64	No	REpower	MM 92-2.000	2.000	92,5	100,0	297.676	4.179.584	175,0
65	No	REpower	MM 92-2.000	2.000	92,5	100,0	297.687	4.179.573	175,1
66	No	REpower	MM 92-2.000	2.000	92,5	100,0	300.483	4.177.723	156,0
67	No	REpower	MM 92-2.000	2.000	92,5	100,0	297.463	4.179.457	157,4
68	No	REpower	MM 92-2.000	2.000	92,5	100,0	297.463	4.179.456	157,4
69	No	REpower	MM 92-2.000	2.000	92,5	100,0	300.046	4.177.619	157,7
70	Yes	VESTAS	V90-2.000	2.000	90,0	80,0	294.291	4.192.224	175,7
71	No	REpower	MM 92-2.000	2.000	92,5	100,0	297.284	4.179.284	172,0
72	No	REpower	MM 92-2.000	2.000	92,5	100,0	297.287	4.179.274	172,4
73	No	REpower	MM 92-2.000	2.000	92,5	100,0	299.475	4.177.592	151,3
74	No	REpower	MM 92-2.000	2.000	92,5	100,0	297.000	4.179.245	177,0
75	No	REpower	MM 92-2.000	2.000	92,5	100,0	296.993	4.179.251	176,8
76	No	REpower	MM 92-2.000	2.000	92,5	100,0	299.257	4.177.466	150,8
77	No	REpower	MM 92-2.000	2.000	92,5	100,0	296.745	4.179.206	178,9
78	No	REpower	MM 92-2.000	2.000	92,5	100,0	296.748	4.179.195	179,0
79	No	REpower	MM 92-2.000	2.000	92,5	100,0	299.076	4.177.422	150,0
80	No	REpower	MM 92-2.000	2.000	92,5	100,0	296.657	4.179.194	179,8
81	Yes	VESTAS	V90-2.000	2.000	90,0	80,0	293.282	4.191.198	185,5
82	No	REpower	MM 92-2.000	2.000	92,5	100,0	298.836	4.177.426	149,7
83	No	REpower	MM 92-2.000	2.000	92,5	100,0	296.477	4.179.140	182,0
84	No	REpower	MM 92-2.000	2.000	92,5	100,0	296.466	4.179.145	182,0
85	Yes	VESTAS	V90-2.000	2.000	90,0	80,0	293.081	4.190.913	179,6
86	No	REpower	MM 92-2.000	2.000	92,5	100,0	298.558	4.177.442	129,1
87	Yes	VESTAS	V90-2.000	2.000	90,0	80,0	292.750	4.190.728	179,6
88	Yes	VESTAS	V90-2.000	2.000	90,0	80,0	292.438	4.190.687	162,6
89	Yes	VESTAS	V90-2.000	2.000	90,0	80,0	292.225	4.190.776	152,0
90	No	VESTAS	V52-850	850	52,0	49,0	290.182	4.187.972	99,9
91	No	VESTAS	V52-850	850	52,0	49,0	289.947	4.188.010	106,8
92	No	VESTAS	V52-850	850	52,0	49,0	289.772	4.187.988	121,5
93	No	VESTAS	V52-850	850	52,0	49,0	289.614	4.187.914	129,0
94	No	VESTAS	V52-850	850	52,0	49,0	289.466	4.187.853	126,5
95	No	VESTAS	V52-850	850	52,0	49,0	289.369	4.187.713	118,6
96	No	REpower	3.4M-3.400	3.400	104,0	98,0	290.005	4.183.341	154,9
97	No	VESTAS	V52-850	850	52,0	49,0	289.240	4.187.619	125,0
98	No	VESTAS	V52-850	850	52,0	49,0	289.161	4.187.488	94,8
99	No	REpower	3.4M-3.400	3.400	104,0	98,0	289.728	4.183.257	155,4
100	No	VESTAS	V52-850	850	52,0	49,0	288.845	4.187.458	86,1
101	No	REpower	3.4M-3.400	3.400	104,0	98,0	289.490	4.183.221	157,6
102	No	VESTAS	V52-850	850	52,0	49,0	288.765	4.187.311	82,4
103	No	VESTAS	V52-850	850	52,0	49,0	288.658	4.187.205	77,7
104	No	REpower	3.4M-3.400	3.400	104,0	98,0	289.142	4.183.159	155,3
105	No	REpower	3.4M-3.400	3.400	104,0	98,0	288.869	4.183.023	151,5
106	No	REpower	3.4M-3.400	3.400	104,0	98,0	287.840	4.182.736	149,0

To be continued on next page...



## ZVI - Standard ZVI summary

### Calculation: Impatto cumulativo Partanna 2 - Stato di fatto

...continued from previous page

	Valid	Manufact.	Type-generator	Power, rated [kW]	Rotor diameter [m]	Hub height [m]	Easting	Northing	Z [m]
107	No	REpower	3.4M-3.400	3.400	104,0	98,0	287.483	4.182.702	148,0
108	No	VESTAS	V52-850	850	52,0	49,0	301.026	4.190.913	359,6
109	No	VESTAS	V52-850	850	52,0	49,0	301.379	4.190.910	390,0
110	No	VESTAS	V52-850	850	52,0	49,0	301.746	4.190.892	418,6
111	No	VESTAS	V52-850	850	52,0	49,0	301.954	4.190.888	406,4
112	No	VESTAS	V52-850	850	52,0	49,0	301.523	4.190.952	400,0
113	Yes	VESTAS	V126-3.0-3.000	3.000	126,0	117,0	293.108	4.178.928	152,0
114	Yes	VESTAS	V126-3.0-3.000	3.000	126,0	117,0	293.443	4.179.160	154,2
115	Yes	VESTAS	V126-3.0-3.000	3.000	126,0	117,0	294.034	4.179.288	153,0
116	No	REpower	MM 92-2.050	2.050	92,5	78,5	286.607	4.178.954	74,0
117	Yes	VESTAS	V126-3.0-3.000	3.000	126,0	117,0	292.260	4.181.421	92,7
118	Yes	VESTAS	V126-3.0-3.000	3.000	126,0	117,0	292.569	4.181.472	93,8
119	Yes	VESTAS	V126-3.0-3.000	3.000	126,0	117,0	293.057	4.181.781	95,0
120	Yes	Siemens Gamesa	SG 6.6-170-6.600	6.600	170,0	115,0	286.276	4.183.881	127,0
121	Yes	Siemens Gamesa	SG 6.6-170-6.600	6.600	170,0	115,0	286.354	4.184.517	123,0
122	Yes	Siemens Gamesa	SG 6.6-170-6.600	6.600	170,0	115,0	286.386	4.185.205	126,2
123	Yes	Siemens Gamesa	SG 6.6-170-6.600	6.600	170,0	115,0	286.887	4.185.446	128,6
124	Yes	Siemens Gamesa	SG 6.6-170-6.600	6.600	170,0	115,0	287.270	4.185.835	140,7
125	Yes	Siemens Gamesa	SG 6.6-170-6.600	6.600	170,0	115,0	287.835	4.186.056	151,0
126	Yes	Siemens Gamesa	SG 6.6-170-6.600	6.600	170,0	115,0	287.952	4.184.972	153,3
127	Yes	Siemens Gamesa	SG 6.6-170-6.600	6.600	170,0	115,0	288.582	4.185.050	145,0
128	Yes	Siemens Gamesa	SG 6.6-170-6.600	6.600	170,0	115,0	288.640	4.185.784	153,9
129	Yes	Siemens Gamesa	SG 6.6-170-6.600	6.600	170,0	115,0	289.296	4.185.024	150,3
130	Yes	Siemens Gamesa	SG 6.6-170-6.600	6.600	170,0	115,0	289.835	4.185.238	161,0
131	Yes	Siemens Gamesa	SG 6.6-170-6.600	6.600	170,0	115,0	290.173	4.185.673	94,0
132	Yes	Siemens Gamesa	SG 6.6-170-6.600	6.600	170,0	115,0	290.777	4.185.978	105,0
133	Yes	Siemens Gamesa	SG 6.6-170-6.600	6.600	170,0	115,0	291.206	4.187.095	95,1
134	Yes	Siemens Gamesa	SG 6.6-170-6.600	6.600	170,0	115,0	291.563	4.185.842	123,0
135	Yes	Siemens Gamesa	SG 6.6-170-6.600	6.600	170,0	115,0	291.420	4.185.141	114,5
136	Yes	Siemens Gamesa	SG 6.6-170-6.600	6.600	170,0	115,0	290.939	4.184.757	110,6
137	Yes	Siemens Gamesa	SG 6.6-170-6.600	6.600	170,0	115,0	292.420	4.185.192	121,3
138	Yes	Siemens Gamesa	SG 6.6-170-6.600	6.600	170,0	115,0	291.475	4.188.190	146,2
139	Yes	Siemens Gamesa	SG 6.6-170-6.600	6.600	170,0	115,0	291.735	4.188.726	113,8
140	Yes	Siemens Gamesa	SG 6.6-170-6.600	6.600	170,0	115,0	292.660	4.188.703	128,9
141	Yes	Siemens Gamesa	SG 6.6-170-6.600	6.600	170,0	115,0	293.472	4.189.070	118,4
142	Yes	Siemens Gamesa	SG 6.6-170-6.600	6.600	170,0	115,0	294.320	4.189.706	149,2
143	Yes	Siemens Gamesa	SG 6.6-170-6.600	6.600	170,0	115,0	295.018	4.190.067	159,8
144	Yes	Siemens Gamesa	SG 6.6-170-6.600	6.600	170,0	115,0	295.479	4.188.307	212,1
145	Yes	Siemens Gamesa	SG 6.6-170-6.600	6.600	170,0	115,0	295.882	4.189.586	194,4
146	Yes	Siemens Gamesa	SG 6.6-170-6.600	6.600	170,0	115,0	296.551	4.189.612	221,6
147	Yes	Siemens Gamesa	SG 6.6-170-6.600	6.600	170,0	115,0	295.629	4.190.723	173,6
148	Yes	Siemens Gamesa	SG 6.6-170-6.600	6.600	170,0	115,0	296.674	4.191.041	188,4
149	Yes	Siemens Gamesa	SG 6.6-170-6.600	6.600	170,0	115,0	297.174	4.191.437	210,2
150	Yes	Siemens Gamesa	SG 6.6-170-6.600	6.600	170,0	115,0	287.682	4.180.883	126,0
151	Yes	Siemens Gamesa	SG 6.6-170-6.600	6.600	170,0	115,0	288.923	4.178.954	125,0
152	Yes	Siemens Gamesa	SG 6.6-170-6.600	6.600	170,0	115,0	290.079	4.178.727	138,0
153	Yes	Siemens Gamesa	SG 6.6-170-6.600	6.600	170,0	115,0	288.929	4.180.760	138,1
154	Yes	Siemens Gamesa	SG 6.6-170-6.600	6.600	170,0	115,0	290.475	4.179.909	143,5
155	Yes	Siemens Gamesa	SG 6.6-170-6.600	6.600	170,0	115,0	290.202	4.181.591	150,0
156	Yes	Siemens Gamesa	SG 6.6-170-6.600	6.600	170,0	115,0	290.748	4.181.708	97,4
157	Yes	Siemens Gamesa	SG 6.6-170-6.600	6.600	170,0	115,0	291.540	4.183.182	98,0
158	Yes	Siemens Gamesa	SG 6.6-170-6.600	6.600	170,0	115,0	293.917	4.183.078	149,2
159	Yes	Siemens Gamesa	SG 6.6-170-6.600	6.600	170,0	115,0	294.190	4.184.312	152,1
160	Yes	Siemens Gamesa	SG 6.6-170-6.600	6.600	170,0	115,0	296.177	4.183.741	151,0
161	Yes	Siemens Gamesa	SG 6.6-170-6.600	6.600	170,0	115,0	292.345	4.177.922	138,5
162	Yes	Siemens Gamesa	SG 6.6-170-6.600	6.600	170,0	115,0	292.748	4.178.532	150,0
163	Yes	Siemens Gamesa	SG 6.6-170-6.600	6.600	170,0	115,0	293.683	4.178.539	150,0
164	Yes	Siemens Gamesa	SG 6.6-170-6.600	6.600	170,0	115,0	294.443	4.179.617	155,0
165	Yes	Siemens Gamesa	SG 6.6-170-6.600	6.600	170,0	115,0	295.080	4.176.778	104,3
166	Yes	Siemens Gamesa	SG 6.0-170-6.200	6.200	170,0	115,0	294.615	4.190.674	135,5
167	Yes	Siemens Gamesa	SG 6.0-170-6.200	6.200	170,0	115,0	294.027	4.190.453	125,0
168	Yes	Siemens Gamesa	SG 6.0-170-6.200	6.200	170,0	115,0	294.836	4.189.663	161,7
169	Yes	Siemens Gamesa	SG 6.0-170-6.200	6.200	170,0	115,0	295.430	4.189.771	179,2
170	Yes	Siemens Gamesa	SG 6.0-170-6.200	6.200	170,0	115,0	295.146	4.188.652	224,3
171	Yes	Siemens Gamesa	SG 6.0-170-6.200	6.200	170,0	115,0	295.866	4.189.038	248,8
172	Yes	VESTAS	V162-6.0-6.000	6.000	162,0	97,5	292.591	4.182.730	98,2
173	Yes	VESTAS	V162-6.0-6.000	6.000	162,0	97,5	292.070	4.182.267	97,7
174	Yes	VESTAS	V162-6.0-6.000	6.000	162,0	97,5	291.118	4.182.072	97,9
175	Yes	VESTAS	V162-6.0-6.000	6.000	162,0	97,5	291.492	4.181.235	83,4
176	Yes	VESTAS	V162-6.0-6.000	6.000	162,0	97,5	292.981	4.180.962	74,7
177	Yes	VESTAS	V162-6.0-6.000	6.000	162,0	97,5	293.628	4.181.193	78,1
178	Yes	VESTAS	V162-6.0-6.000	6.000	162,0	97,5	294.312	4.181.199	87,6
179	Yes	VESTAS	V162-6.0-6.000	6.000	162,0	97,5	293.954	4.180.562	87,4
180	Yes	VESTAS	V162-6.0-6.000	6.000	162,0	97,5	292.065	4.180.783	95,1
181	Yes	VESTAS	V162-6.0-6.000	6.000	162,0	97,5	293.133	4.180.231	78,2
182	Yes	VESTAS	V162-6.0-6.000	6.000	162,0	97,5	292.376	4.179.920	70,5

To be continued on next page...



## ZVI - Standard ZVI summary

### Calculation: Impatto cumulativo Partanna 2 - Stato di fatto

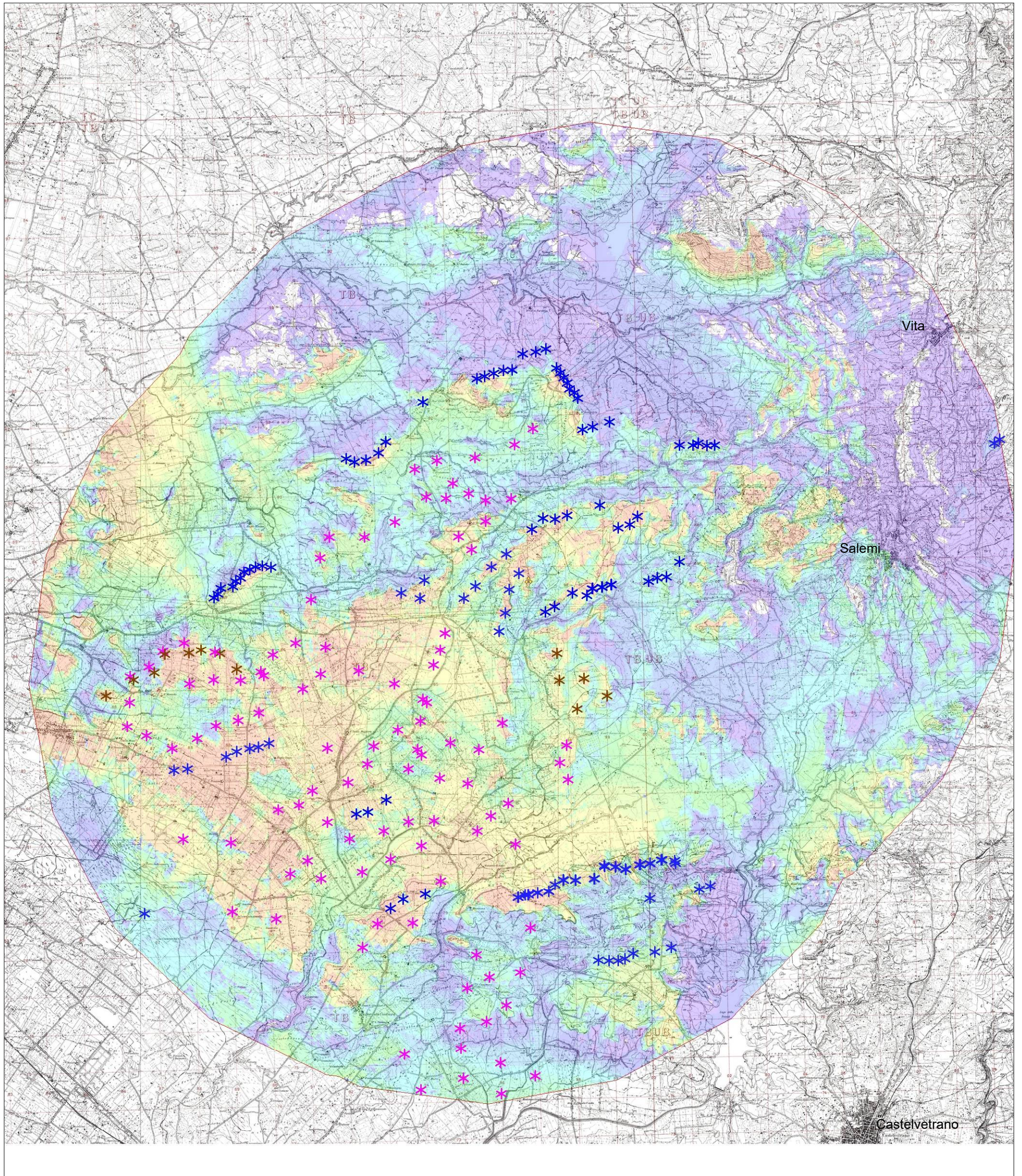
...continued from previous page

	Valid	Manufact.	Type-generator	Power, rated [kW]	Rotor diameter [m]	Hub height [m]	Easting	Northing	Z [m]
183	Yes	VESTAS	V162-6.0-6.000	6.000	162,0	97,5	291.287	4.179.768	93,1
184	Yes	VESTAS	V162-6.0-6.000	6.000	162,0	97,5	290.950	4.180.246	111,1
185	No	REpower	MM 92-2.000	2.000	92,5	120,0	295.908	4.173.990	38,0
186	No	REpower	MM 92-2.000	2.000	92,5	120,0	293.788	4.174.139	27,8
187	No	REpower	MM 92-2.000	2.000	92,5	120,0	294.916	4.174.417	44,1
188	No	REpower	MM 92-2.000	2.000	92,5	120,0	295.911	4.174.802	45,0
189	No	REpower	MM 92-2.000	2.000	92,5	120,0	296.818	4.174.433	47,7
190	No	REpower	MM 92-2.000	2.000	92,5	120,0	293.371	4.175.083	64,9
191	No	REpower	MM 92-2.000	2.000	92,5	120,0	296.097	4.176.306	99,2
192	No	REpower	MM 92-2.000	2.000	92,5	120,0	294.868	4.175.197	50,0
193	No	REpower	MM 92-2.000	2.000	92,5	120,0	294.856	4.175.740	75,0
194	No	REpower	MM 92-2.000	2.000	92,5	120,0	295.567	4.175.898	95,7
195	No	REpower	MM 92-2.000	2.000	92,5	120,0	295.669	4.177.056	119,0
196	No	REpower	MM 92-2.000	2.000	92,5	120,0	296.484	4.177.170	118,9
197	No	REpower	MM 92-2.000	2.000	92,5	120,0	295.341	4.177.663	131,9
198	No	REpower	MM 92-2.000	2.000	92,5	120,0	296.781	4.178.332	151,5
199	No	REpower	MM 92-2.000	2.000	92,5	120,0	296.438	4.180.538	99,0
200	No	REpower	MM 92-2.000	2.000	92,5	120,0	295.811	4.181.292	96,3
201	No	REpower	MM 92-2.000	2.000	92,5	120,0	295.449	4.180.909	90,0
202	No	REpower	MM 92-2.000	2.000	92,5	120,0	296.278	4.181.612	102,9
203	No	REpower	MM 92-2.000	2.000	92,5	120,0	297.871	4.182.198	126,7
204	No	REpower	MM 92-2.000	2.000	92,5	120,0	297.668	4.182.644	133,1
205	No	REpower	MM 92-2.000	2.000	92,5	120,0	297.849	4.183.103	150,0
206	No	REpower	MM 92-2.000	2.000	92,5	120,0	295.225	4.182.168	97,0
207	No	REpower	MM 92-2.000	2.000	92,5	120,0	294.484	4.182.316	98,0
208	No	REpower	MM 92-2.000	2.000	92,5	120,0	293.671	4.182.585	125,0
209	No	REpower	MM 92-2.000	2.000	92,5	120,0	294.012	4.182.943	138,5
210	No	REpower	MM 92-2.000	2.000	92,5	120,0	294.787	4.183.242	106,9
211	No	REpower	MM 92-2.000	2.000	92,5	120,0	295.541	4.183.040	108,8
212	Yes	Siemens Gamesa	SG 6.6-170-6.600	6.600	170,0	115,0	286.779	4.183.630	130,8
213	Yes	Siemens Gamesa	SG 6.6-170-6.600	6.600	170,0	115,0	287.449	4.183.277	154,6
214	Yes	Siemens Gamesa	SG 6.6-170-6.600	6.600	170,0	115,0	288.109	4.183.517	139,3
215	Yes	Siemens Gamesa	SG 6.6-170-6.600	6.600	170,0	115,0	288.615	4.183.852	150,1
216	Yes	Siemens Gamesa	SG 6.6-170-6.600	6.600	170,0	115,0	289.202	4.183.972	152,0
217	Yes	Siemens Gamesa	SG 6.6-170-6.600	6.600	170,0	115,0	289.758	4.184.161	157,0
218	Yes	Siemens Gamesa	SG 6.6-170-6.600	6.600	170,0	115,0	289.910	4.185.140	156,6
219	Yes	VESTAS	V150-5.6-5.600	5.600	150,0	125,0	294.716	4.186.135	147,4
220	Yes	VESTAS	V150-5.6-5.600	5.600	150,0	125,0	294.579	4.185.693	133,5
221	Yes	VESTAS	V150-5.6-5.600	5.600	150,0	125,0	294.390	4.185.303	125,0
222	Yes	VESTAS	V150-5.6-5.600	5.600	150,0	125,0	293.348	4.184.830	117,1
223	Yes	VESTAS	V150-5.6-5.600	5.600	150,0	125,0	294.090	4.184.409	152,1
224	Yes	VESTAS	V150-5.6-5.600	5.600	150,0	125,0	294.016	4.183.846	125,2
225	Yes	VESTAS	V150-5.6-5.600	5.600	150,0	125,0	293.406	4.183.615	137,3
226	Yes	VESTAS	V150-5.6-5.600	5.600	150,0	125,0	292.764	4.183.199	122,5
227	No	FUHLÄNDER	FL 1000plus-1.000	1.000	58,0	82,0	288.771	4.185.748	157,6
228	No	FUHLÄNDER	FL 1000plus-1.000	1.000	58,0	82,0	285.736	4.184.712	126,4
229	No	FUHLÄNDER	FL 1000plus-1.000	1.000	58,0	82,0	286.481	4.185.114	128,1
230	No	FUHLÄNDER	FL 1000plus-1.000	1.000	58,0	82,0	287.025	4.185.280	140,3
231	No	FUHLÄNDER	FL 1000plus-1.000	1.000	58,0	82,0	287.317	4.185.764	150,1
232	No	FUHLÄNDER	FL 1000plus-1.000	1.000	58,0	82,0	287.952	4.185.784	153,0
233	No	FUHLÄNDER	FL 1000plus-1.000	1.000	58,0	82,0	288.277	4.185.847	150,0
234	No	FUHLÄNDER	FL 1000plus-1.000	1.000	58,0	82,0	289.199	4.185.315	150,0
235	Yes	VESTAS	V126-3.0-3.000	3.000	126,0	117,0	297.653	4.185.518	226,0
236	Yes	VESTAS	V126-3.0-3.000	3.000	126,0	117,0	297.709	4.184.813	199,7
237	Yes	VESTAS	V126-3.0-3.000	3.000	126,0	117,0	298.351	4.184.852	225,0
238	Yes	VESTAS	V126-3.0-3.000	3.000	126,0	117,0	298.951	4.184.371	210,3
239	Yes	VESTAS	V126-3.0-3.000	3.000	126,0	117,0	298.158	4.184.058	178,7
240	Yes	Siemens Gamesa	SG 6.6-170-6.600	6.600	170,0	115,0	296.387	4.188.167	249,6
241	Yes	Siemens Gamesa	SG 6.6-170-6.600	6.600	170,0	115,0	296.704	4.187.632	239,5
242	Yes	Siemens Gamesa	SG 6.6-170-6.600	6.600	170,0	115,0	296.446	4.187.224	223,1
243	Yes	Siemens Gamesa	SG 6.6-170-6.600	6.600	170,0	115,0	295.991	4.187.828	225,2
244	Yes	Siemens Gamesa	SG 6.6-170-6.600	6.600	170,0	115,0	295.554	4.187.334	205,1
245	Yes	Siemens Gamesa	SG 6.6-170-6.600	6.600	170,0	115,0	296.328	4.186.622	227,6
246	Yes	Siemens Gamesa	SG 6.6-170-6.600	6.600	170,0	115,0	295.241	4.187.030	181,0
247	Yes	Siemens Gamesa	SG 6.6-170-6.600	6.600	170,0	115,0	296.151	4.186.141	227,0
248	Yes	Siemens Gamesa	SG 6.6-170-6.600	6.600	170,0	115,0	294.078	4.187.057	175,0
249	Yes	Siemens Gamesa	SG 6.6-170-6.600	6.600	170,0	115,0	294.211	4.187.523	175,3
250	Yes	Siemens Gamesa	SG 6.6-170-6.600	6.600	170,0	115,0	293.586	4.187.208	175,9



## ZVI - Map Standard ZVI summary

Calculation: Impatto cumulativo Partanna 2 - Stato di fatto



0 1 2 3 4 km

Map: IGM maps 1:25000 , Print scale 1:100.000. Map center UTM (north)-WGS84 Zone: 33 East: 296.830 North: 4.187.461

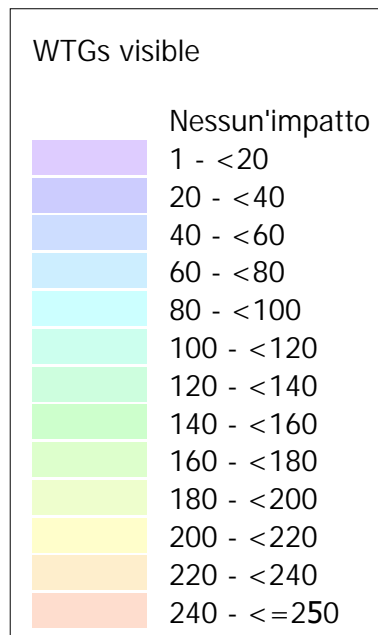
\* Impianti esistenti \* Impianti in fase di autorizzazione \* Impianti autorizzati

Grid step: 25 m - Eye height: 1,7 m - Calculation height: Total height



## ZVI - Map Standard ZVI summary

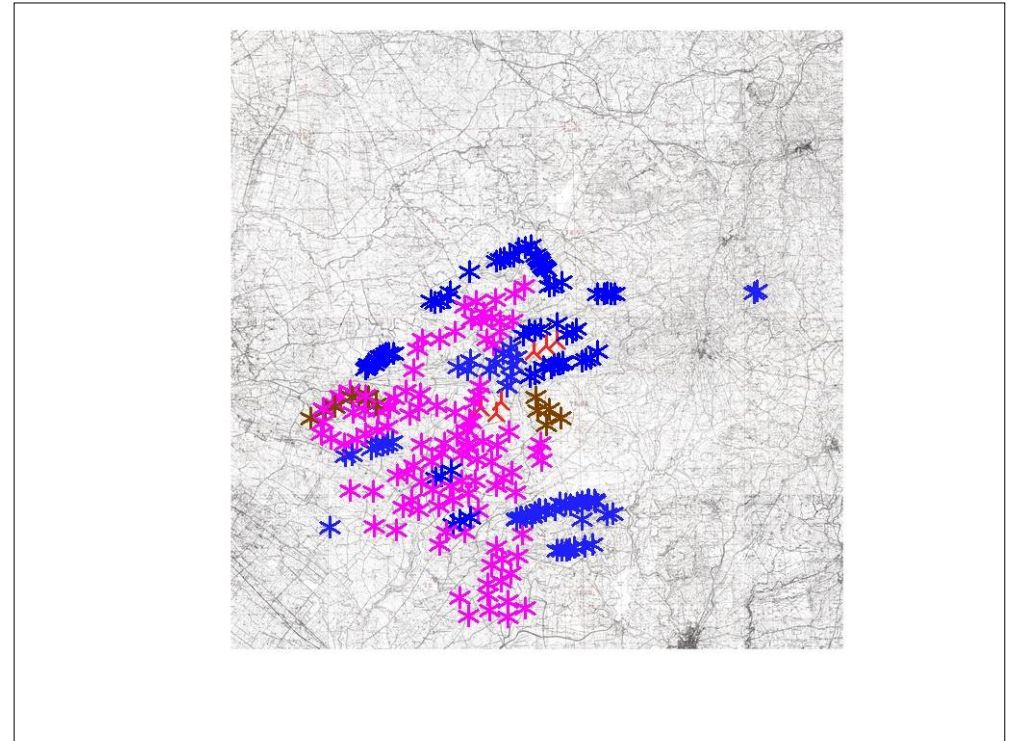
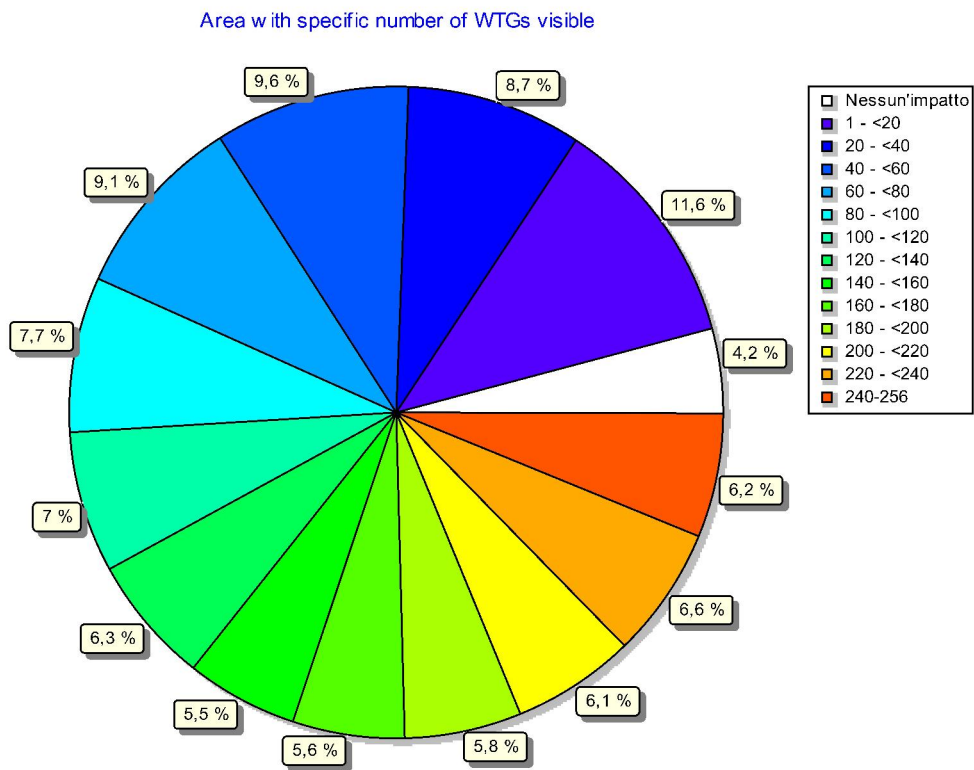
Calculation: Impatto cumulativo Partanna 2 - Stato di fatto





## ZVI - Standard ZVI summary

Calculation: Impatto cumulativo Partanna 2 - Stato di progetto



Scale 1:400.000  
▲ WTG in progetto ✱ Impianti esistenti ✱ Impianti in fase di autorizzazione ✱ Impianti autorizzati

### Assumptions for ZVI calculation

WTG areas	11k Partanna 2
Calculation step	25 m
Eye height	1,7 m
Calculation area	50.078 ha
WTG Calculation height	Total height
Obstacles used in calculation	0
DHM object	Elevation Grid Data Object: Partanna 2_EMDGrid_5.wpg (21)
No area objects used in calculation	
No grid objects used in calculation	
New WTGs used in calculation	6
Existing WTGs used in calculation	250

No maximum distance to WTG

### ZVI Results

WTGs visible	Area [ha]	Area [%]
0	2.104	4,2
1	196	0,4
2	2.213	4,4
3	185	0,4
4	256	0,5
5	246	0,5
6	218	0,4
7	159	0,3
8	177	0,4
9	168	0,3
10	183	0,4
11	177	0,4
12	183	0,4
13	194	0,4
14	229	0,5
15	208	0,4
16	210	0,4
17	192	0,4
18	196	0,4
19	200	0,4
20	204	0,4
21	222	0,4
22	234	0,5
23	251	0,5
24	245	0,5
25	242	0,5
25-256	41.030	81,9

### WTGs

Valid	Manufact.	Type-generator	Power, rated [kW]	Rotor diameter [m]	Hub height [m]	Easting	Northing	Z [m]
1 Yes	Siemens Gamesa	SG 6.6-170-6.600	6.600	170,0	135,0	294.717	4.185.053	121,6
2 Yes	Siemens Gamesa	SG 6.6-170-6.600	6.600	170,0	135,0	295.830	4.185.303	155,6
3 Yes	Siemens Gamesa	SG 6.6-170-6.600	6.600	170,0	135,0	295.565	4.184.727	131,3
4 Yes	Siemens Gamesa	SG 6.6-170-6.600	6.600	170,0	135,0	297.629	4.187.905	236,2
5 Yes	Siemens Gamesa	SG 6.6-170-6.600	6.600	170,0	135,0	298.272	4.188.196	269,3
6 Yes	Siemens Gamesa	SG 6.6-170-6.600	6.600	170,0	135,0	298.862	4.188.457	299,1
7 Yes	Siemens Gamesa	SG 6.0-170-6.200	6.200	170,0	115,0	309.327	4.190.775	534,4
8 Yes	Siemens Gamesa	SG 6.0-170-6.200	6.200	170,0	115,0	309.461	4.190.869	521,0
9 Yes	VESTAS	V90-2.000	2.000	90,0	80,0	300.950	4.187.852	277,0
10 Yes	VESTAS	V90-2.000	2.000	90,0	80,0	300.596	4.187.459	278,1
11 Yes	VESTAS	V90-2.000	2.000	90,0	80,0	300.357	4.187.439	262,2
12 Yes	VESTAS	V90-2.000	2.000	90,0	80,0	300.119	4.187.351	250,6
13 Yes	VESTAS	V90-2.000	2.000	90,0	80,0	299.876	4.189.073	326,0
14 Yes	VESTAS	V90-2.000	2.000	90,0	80,0	299.658	4.188.862	319,7
15 Yes	VESTAS	V90-2.000	2.000	90,0	80,0	299.349	4.188.777	307,0
16 Yes	VESTAS	V90-2.000	2.000	90,0	80,0	299.138	4.187.293	275,0
17 Yes	VESTAS	V90-2.000	2.000	90,0	80,0	299.123	4.187.282	275,3
18 Yes	VESTAS	V90-2.000	2.000	90,0	80,0	298.894	4.187.235	275,0
19 Yes	VESTAS	V90-2.000	2.000	90,0	80,0	298.878	4.187.225	275,0
20 Yes	VESTAS	V90-2.000	2.000	90,0	80,0	298.883	4.189.384	300,1
21 Yes	VESTAS	V90-2.000	2.000	90,0	80,0	298.639	4.187.202	275,1
22 Yes	VESTAS	V90-2.000	2.000	90,0	80,0	298.633	4.187.199	275,2
23 Yes	VESTAS	V90-2.000	2.000	90,0	80,0	298.482	4.187.024	273,3
24 Yes	VESTAS	V90-2.000	2.000	90,0	80,0	299.187	4.191.570	255,5
25 Yes	VESTAS	V90-2.000	2.000	90,0	80,0	298.105	4.187.100	254,7
26 Yes	VESTAS	V90-2.000	2.000	90,0	80,0	298.010	4.189.139	279,3
27 Yes	VESTAS	V90-2.000	2.000	90,0	80,0	298.748	4.191.447	278,2
28 Yes	VESTAS	V90-2.000	2.000	90,0	80,0	298.480	4.191.383	305,1
29 Yes	VESTAS	V90-2.000	2.000	90,0	80,0	297.700	4.189.045	272,6
30 Yes	VESTAS	V90-2.000	2.000	90,0	80,0	297.620	4.186.757	252,4

To be continued on next page...

## ZVI - Standard ZVI summary

Calculation: Impatto cumulativo Partanna 2 - Stato di progetto

...continued from previous page

	Valid	Manufact.	Type-generator	Power, rated [kW]	Rotor diameter [m]	Hub height [m]	Easting	Northing	Z [m]
31	Yes	VESTAS	V90-2.000	2.000	90,0	80,0	297.384	4.189.078	253,0
32	Yes	VESTAS	V90-2.000	2.000	90,0	80,0	297.383	4.186.618	226,7
33	No	VESTAS	V52-850	850	52,0	49,0	298.368	4.192.225	277,7
34	Yes	VESTAS	V90-2.000	2.000	90,0	80,0	297.076	4.188.794	253,0
35	No	VESTAS	V52-850	850	52,0	49,0	298.280	4.192.361	302,7
36	No	VESTAS	V52-850	850	52,0	49,0	298.164	4.192.473	305,6
37	No	VESTAS	V52-850	850	52,0	49,0	298.096	4.192.622	301,5
38	No	VESTAS	V52-850	850	52,0	49,0	298.021	4.192.758	301,0
39	No	VESTAS	V52-850	850	52,0	49,0	297.925	4.192.890	302,1
40	No	VESTAS	V52-850	850	52,0	49,0	297.831	4.193.023	300,2
41	No	REpower	MM 92-2.000	2.000	92,5	100,0	300.629	4.180.005	215,4
42	No	REpower	MM 92-2.000	2.000	92,5	100,0	300.660	4.179.933	204,9
43	No	REpower	MM 92-2.000	2.000	92,5	100,0	300.298	4.180.040	202,7
44	No	REpower	MM 92-2.000	2.000	92,5	100,0	300.271	4.180.034	204,7
45	Yes	VESTAS	V90-2.000	2.000	90,0	80,0	297.568	4.193.520	268,6
46	No	REpower	MM 92-2.000	2.000	92,5	100,0	301.551	4.179.321	176,0
47	No	REpower	MM 92-2.000	2.000	92,5	100,0	299.975	4.179.950	227,1
48	Yes	VESTAS	V90-2.000	2.000	90,0	80,0	297.289	4.193.447	220,9
49	No	REpower	MM 92-2.000	2.000	92,5	100,0	301.265	4.179.243	187,8
50	No	REpower	MM 92-2.000	2.000	92,5	100,0	299.976	4.179.941	227,0
51	No	REpower	MM 92-2.000	2.000	92,5	100,0	299.719	4.179.923	216,7
52	No	REpower	MM 92-2.000	2.000	92,5	100,0	299.704	4.179.924	215,5
53	Yes	VESTAS	V90-2.000	2.000	90,0	80,0	296.950	4.193.410	202,4
54	Yes	VESTAS	V90-2.000	2.000	90,0	80,0	296.662	4.192.999	264,9
55	No	REpower	MM 92-2.000	2.000	92,5	100,0	299.328	4.179.816	201,8
56	No	REpower	MM 92-2.000	2.000	92,5	100,0	299.334	4.179.809	201,5
57	Yes	VESTAS	V90-2.000	2.000	90,0	80,0	296.436	4.192.990	300,9
58	No	REpower	MM 92-2.000	2.000	92,5	100,0	299.073	4.179.883	204,3
59	No	REpower	MM 92-2.000	2.000	92,5	100,0	299.067	4.179.879	203,8
60	Yes	VESTAS	V90-2.000	2.000	90,0	80,0	296.169	4.192.919	306,1
61	No	REpower	MM 92-2.000	2.000	92,5	100,0	298.774	4.179.916	202,0
62	No	REpower	MM 92-2.000	2.000	92,5	100,0	298.785	4.179.900	201,2
63	No	REpower	MM 92-2.000	2.000	92,5	100,0	299.954	4.179.025	179,4
64	Yes	VESTAS	V90-2.000	2.000	90,0	80,0	295.927	4.192.848	303,0
65	Yes	VESTAS	V90-2.000	2.000	90,0	80,0	295.733	4.192.792	296,6
66	No	REpower	MM 92-2.000	2.000	92,5	100,0	298.503	4.179.589	200,3
67	No	REpower	MM 92-2.000	2.000	92,5	100,0	298.495	4.179.584	201,2
68	No	REpower	MM 92-2.000	2.000	92,5	100,0	298.005	4.179.565	152,7
69	No	REpower	MM 92-2.000	2.000	92,5	100,0	298.002	4.179.560	153,0
70	No	REpower	MM 92-2.000	2.000	92,5	100,0	297.676	4.179.584	175,0
71	No	REpower	MM 92-2.000	2.000	92,5	100,0	297.687	4.179.573	175,1
72	No	REpower	MM 92-2.000	2.000	92,5	100,0	300.483	4.177.723	156,0
73	No	REpower	MM 92-2.000	2.000	92,5	100,0	297.463	4.179.457	157,4
74	No	REpower	MM 92-2.000	2.000	92,5	100,0	297.463	4.179.456	157,4
75	No	REpower	MM 92-2.000	2.000	92,5	100,0	300.046	4.177.619	157,7
76	Yes	VESTAS	V90-2.000	2.000	90,0	80,0	294.291	4.192.224	175,7
77	No	REpower	MM 92-2.000	2.000	92,5	100,0	297.284	4.179.284	172,0
78	No	REpower	MM 92-2.000	2.000	92,5	100,0	297.287	4.179.274	172,4
79	No	REpower	MM 92-2.000	2.000	92,5	100,0	299.475	4.177.592	151,3
80	No	REpower	MM 92-2.000	2.000	92,5	100,0	297.000	4.179.245	177,0
81	No	REpower	MM 92-2.000	2.000	92,5	100,0	296.993	4.179.251	176,8
82	No	REpower	MM 92-2.000	2.000	92,5	100,0	299.257	4.177.466	150,8
83	No	REpower	MM 92-2.000	2.000	92,5	100,0	296.745	4.179.206	178,9
84	No	REpower	MM 92-2.000	2.000	92,5	100,0	296.748	4.179.195	179,0
85	No	REpower	MM 92-2.000	2.000	92,5	100,0	299.076	4.177.422	150,0
86	No	REpower	MM 92-2.000	2.000	92,5	100,0	296.657	4.179.194	179,8
87	Yes	VESTAS	V90-2.000	2.000	90,0	80,0	293.282	4.191.198	185,5
88	No	REpower	MM 92-2.000	2.000	92,5	100,0	298.836	4.177.426	149,7
89	No	REpower	MM 92-2.000	2.000	92,5	100,0	296.477	4.179.140	182,0
90	No	REpower	MM 92-2.000	2.000	92,5	100,0	296.466	4.179.145	182,0
91	Yes	VESTAS	V90-2.000	2.000	90,0	80,0	293.081	4.190.913	179,6
92	No	REpower	MM 92-2.000	2.000	92,5	100,0	298.558	4.177.442	129,1
93	Yes	VESTAS	V90-2.000	2.000	90,0	80,0	292.750	4.190.728	179,6
94	Yes	VESTAS	V90-2.000	2.000	90,0	80,0	292.438	4.190.687	162,6
95	Yes	VESTAS	V90-2.000	2.000	90,0	80,0	292.225	4.190.776	152,0
96	No	VESTAS	V52-850	850	52,0	49,0	290.182	4.187.972	99,9
97	No	VESTAS	V52-850	850	52,0	49,0	289.947	4.188.010	106,8
98	No	VESTAS	V52-850	850	52,0	49,0	289.772	4.187.988	121,5
99	No	VESTAS	V52-850	850	52,0	49,0	289.614	4.187.914	129,0
100	No	VESTAS	V52-850	850	52,0	49,0	289.466	4.187.853	126,5
101	No	VESTAS	V52-850	850	52,0	49,0	289.369	4.187.713	118,6
102	No	REpower	3.4M-3.400	3.400	104,0	98,0	290.005	4.183.341	154,9
103	No	VESTAS	V52-850	850	52,0	49,0	289.240	4.187.619	125,0
104	No	VESTAS	V52-850	850	52,0	49,0	289.161	4.187.488	94,8
105	No	REpower	3.4M-3.400	3.400	104,0	98,0	289.728	4.183.257	155,4
106	No	VESTAS	V52-850	850	52,0	49,0	288.845	4.187.458	86,1

To be continued on next page...



## ZVI - Standard ZVI summary

### Calculation: Impatto cumulativo Partanna 2 - Stato di progetto

...continued from previous page

	Valid	Manufact.	Type-generator	Power, rated [kW]	Rotor diameter [m]	Hub height [m]	Easting	Northing	Z [m]
107	No	REpower	3.4M-3.400	3.400	104,0	98,0	289.490	4.183.221	157,6
108	No	VESTAS	V52-850	850	52,0	49,0	288.765	4.187.311	82,4
109	No	VESTAS	V52-850	850	52,0	49,0	288.658	4.187.205	77,7
110	No	REpower	3.4M-3.400	3.400	104,0	98,0	289.142	4.183.159	155,3
111	No	REpower	3.4M-3.400	3.400	104,0	98,0	288.869	4.183.023	151,5
112	No	REpower	3.4M-3.400	3.400	104,0	98,0	287.840	4.182.736	149,0
113	No	REpower	3.4M-3.400	3.400	104,0	98,0	287.483	4.182.702	148,0
114	No	VESTAS	V52-850	850	52,0	49,0	301.026	4.190.913	359,6
115	No	VESTAS	V52-850	850	52,0	49,0	301.379	4.190.910	390,0
116	No	VESTAS	V52-850	850	52,0	49,0	301.746	4.190.892	418,6
117	No	VESTAS	V52-850	850	52,0	49,0	301.954	4.190.888	406,4
118	No	VESTAS	V52-850	850	52,0	49,0	301.523	4.190.952	400,0
119	Yes	VESTAS	V126-3.0-3.000	3.000	126,0	117,0	293.108	4.178.928	152,0
120	Yes	VESTAS	V126-3.0-3.000	3.000	126,0	117,0	293.443	4.179.160	154,2
121	Yes	VESTAS	V126-3.0-3.000	3.000	126,0	117,0	294.034	4.179.288	153,0
122	No	REpower	MM 92-2.050	2.050	92,5	78,5	286.607	4.178.954	74,0
123	Yes	VESTAS	V126-3.0-3.000	3.000	126,0	117,0	292.260	4.181.421	92,7
124	Yes	VESTAS	V126-3.0-3.000	3.000	126,0	117,0	292.569	4.181.472	93,8
125	Yes	VESTAS	V126-3.0-3.000	3.000	126,0	117,0	293.057	4.181.781	95,0
126	Yes	Siemens Gamesa	SG 6.6-170-6.600	6.600	170,0	115,0	286.276	4.183.881	127,0
127	Yes	Siemens Gamesa	SG 6.6-170-6.600	6.600	170,0	115,0	286.354	4.184.517	123,0
128	Yes	Siemens Gamesa	SG 6.6-170-6.600	6.600	170,0	115,0	286.386	4.185.205	126,2
129	Yes	Siemens Gamesa	SG 6.6-170-6.600	6.600	170,0	115,0	286.887	4.185.446	128,6
130	Yes	Siemens Gamesa	SG 6.6-170-6.600	6.600	170,0	115,0	287.270	4.185.835	140,7
131	Yes	Siemens Gamesa	SG 6.6-170-6.600	6.600	170,0	115,0	287.835	4.186.056	151,0
132	Yes	Siemens Gamesa	SG 6.6-170-6.600	6.600	170,0	115,0	287.952	4.184.972	153,3
133	Yes	Siemens Gamesa	SG 6.6-170-6.600	6.600	170,0	115,0	288.582	4.185.050	145,0
134	Yes	Siemens Gamesa	SG 6.6-170-6.600	6.600	170,0	115,0	288.640	4.185.784	153,9
135	Yes	Siemens Gamesa	SG 6.6-170-6.600	6.600	170,0	115,0	289.296	4.185.024	150,3
136	Yes	Siemens Gamesa	SG 6.6-170-6.600	6.600	170,0	115,0	289.835	4.185.238	161,0
137	Yes	Siemens Gamesa	SG 6.6-170-6.600	6.600	170,0	115,0	290.173	4.185.673	94,0
138	Yes	Siemens Gamesa	SG 6.6-170-6.600	6.600	170,0	115,0	290.777	4.185.978	105,0
139	Yes	Siemens Gamesa	SG 6.6-170-6.600	6.600	170,0	115,0	291.206	4.187.095	95,1
140	Yes	Siemens Gamesa	SG 6.6-170-6.600	6.600	170,0	115,0	291.563	4.185.842	123,0
141	Yes	Siemens Gamesa	SG 6.6-170-6.600	6.600	170,0	115,0	291.420	4.185.141	114,5
142	Yes	Siemens Gamesa	SG 6.6-170-6.600	6.600	170,0	115,0	290.939	4.184.757	110,6
143	Yes	Siemens Gamesa	SG 6.6-170-6.600	6.600	170,0	115,0	292.420	4.185.192	121,3
144	Yes	Siemens Gamesa	SG 6.6-170-6.600	6.600	170,0	115,0	291.475	4.188.190	146,2
145	Yes	Siemens Gamesa	SG 6.6-170-6.600	6.600	170,0	115,0	291.735	4.188.726	113,8
146	Yes	Siemens Gamesa	SG 6.6-170-6.600	6.600	170,0	115,0	292.660	4.188.703	128,9
147	Yes	Siemens Gamesa	SG 6.6-170-6.600	6.600	170,0	115,0	293.472	4.189.070	118,4
148	Yes	Siemens Gamesa	SG 6.6-170-6.600	6.600	170,0	115,0	294.320	4.189.706	149,2
149	Yes	Siemens Gamesa	SG 6.6-170-6.600	6.600	170,0	115,0	295.018	4.190.067	159,8
150	Yes	Siemens Gamesa	SG 6.6-170-6.600	6.600	170,0	115,0	295.479	4.188.307	212,1
151	Yes	Siemens Gamesa	SG 6.6-170-6.600	6.600	170,0	115,0	295.882	4.189.586	194,4
152	Yes	Siemens Gamesa	SG 6.6-170-6.600	6.600	170,0	115,0	296.551	4.189.612	221,6
153	Yes	Siemens Gamesa	SG 6.6-170-6.600	6.600	170,0	115,0	295.629	4.190.723	173,6
154	Yes	Siemens Gamesa	SG 6.6-170-6.600	6.600	170,0	115,0	296.674	4.191.041	188,4
155	Yes	Siemens Gamesa	SG 6.6-170-6.600	6.600	170,0	115,0	297.174	4.191.437	210,2
156	Yes	Siemens Gamesa	SG 6.6-170-6.600	6.600	170,0	115,0	287.682	4.180.883	126,0
157	Yes	Siemens Gamesa	SG 6.6-170-6.600	6.600	170,0	115,0	288.923	4.178.954	125,0
158	Yes	Siemens Gamesa	SG 6.6-170-6.600	6.600	170,0	115,0	290.079	4.178.727	138,0
159	Yes	Siemens Gamesa	SG 6.6-170-6.600	6.600	170,0	115,0	288.929	4.180.760	138,1
160	Yes	Siemens Gamesa	SG 6.6-170-6.600	6.600	170,0	115,0	290.475	4.179.909	143,5
161	Yes	Siemens Gamesa	SG 6.6-170-6.600	6.600	170,0	115,0	290.202	4.181.591	150,0
162	Yes	Siemens Gamesa	SG 6.6-170-6.600	6.600	170,0	115,0	290.748	4.181.708	97,4
163	Yes	Siemens Gamesa	SG 6.6-170-6.600	6.600	170,0	115,0	291.540	4.183.182	98,0
164	Yes	Siemens Gamesa	SG 6.6-170-6.600	6.600	170,0	115,0	293.917	4.183.078	149,2
165	Yes	Siemens Gamesa	SG 6.6-170-6.600	6.600	170,0	115,0	294.190	4.184.312	152,1
166	Yes	Siemens Gamesa	SG 6.6-170-6.600	6.600	170,0	115,0	296.177	4.183.741	151,0
167	Yes	Siemens Gamesa	SG 6.6-170-6.600	6.600	170,0	115,0	292.345	4.177.922	138,5
168	Yes	Siemens Gamesa	SG 6.6-170-6.600	6.600	170,0	115,0	292.748	4.178.532	150,0
169	Yes	Siemens Gamesa	SG 6.6-170-6.600	6.600	170,0	115,0	293.683	4.178.539	150,0
170	Yes	Siemens Gamesa	SG 6.6-170-6.600	6.600	170,0	115,0	294.443	4.179.617	155,0
171	Yes	Siemens Gamesa	SG 6.6-170-6.600	6.600	170,0	115,0	295.080	4.176.778	104,3
172	Yes	Siemens Gamesa	SG 6.0-170-6.200	6.200	170,0	115,0	294.615	4.190.674	135,5
173	Yes	Siemens Gamesa	SG 6.0-170-6.200	6.200	170,0	115,0	294.027	4.190.453	125,0
174	Yes	Siemens Gamesa	SG 6.0-170-6.200	6.200	170,0	115,0	294.836	4.189.663	161,7
175	Yes	Siemens Gamesa	SG 6.0-170-6.200	6.200	170,0	115,0	295.430	4.189.771	179,2
176	Yes	Siemens Gamesa	SG 6.0-170-6.200	6.200	170,0	115,0	295.146	4.188.652	224,3
177	Yes	Siemens Gamesa	SG 6.0-170-6.200	6.200	170,0	115,0	295.866	4.189.038	248,8
178	Yes	VESTAS	V162-6.0-6.000	6.000	162,0	97,5	292.591	4.182.730	98,2
179	Yes	VESTAS	V162-6.0-6.000	6.000	162,0	97,5	292.070	4.182.267	97,7
180	Yes	VESTAS	V162-6.0-6.000	6.000	162,0	97,5	291.118	4.182.072	97,9
181	Yes	VESTAS	V162-6.0-6.000	6.000	162,0	97,5	291.492	4.181.235	83,4
182	Yes	VESTAS	V162-6.0-6.000	6.000	162,0	97,5	292.981	4.180.962	74,7

To be continued on next page...

## ZVI - Standard ZVI summary

Calculation: Impatto cumulativo Partanna 2 - Stato di progetto

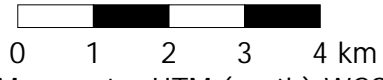
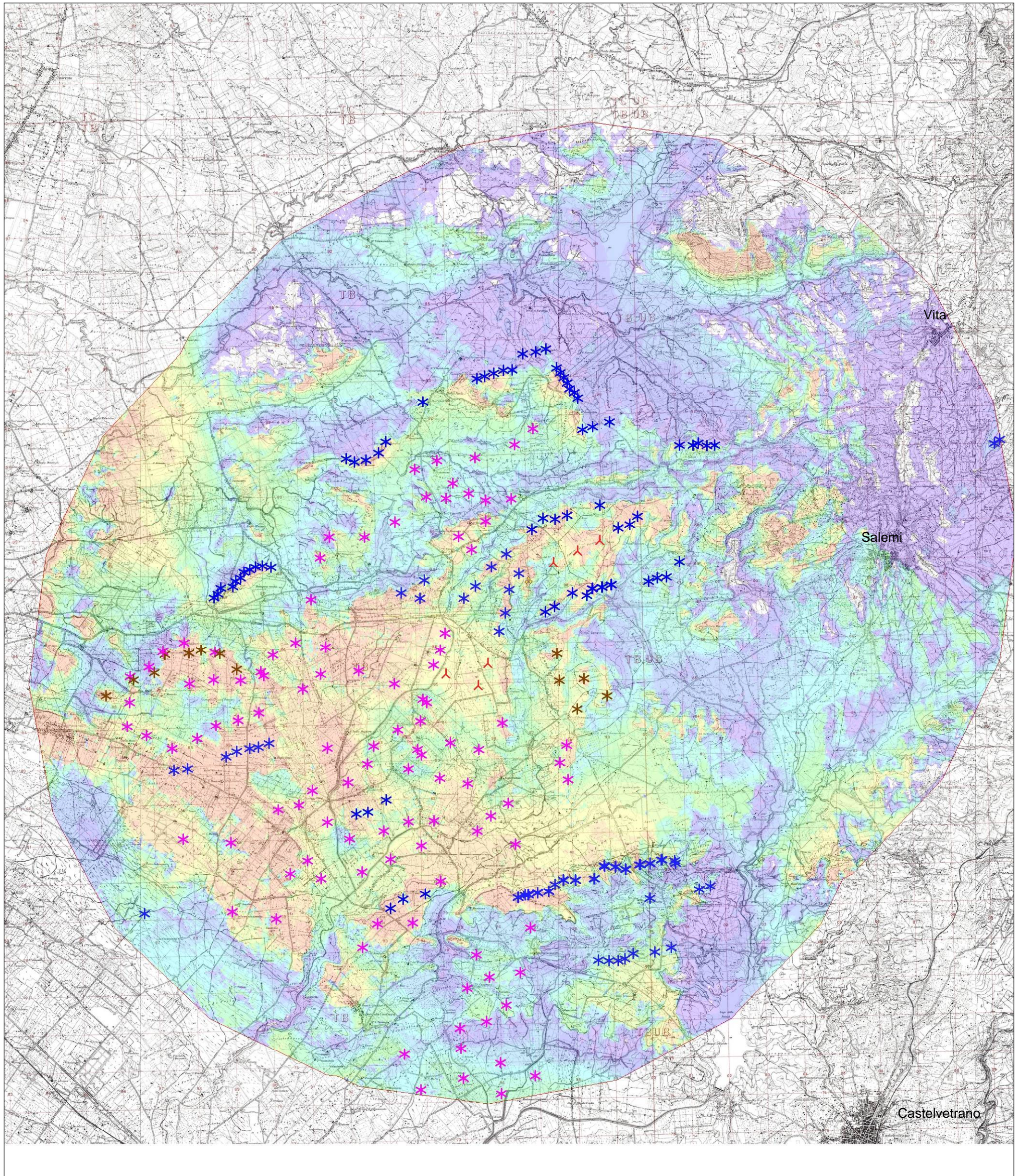
...continued from previous page

	Valid	Manufact.	Type-generator	Power, rated [kW]	Rotor diameter [m]	Hub height [m]	Easting	Northing	Z [m]
183	Yes	VESTAS	V162-6.0-6.000	6.000	162,0	97,5	293.628	4.181.193	78,1
184	Yes	VESTAS	V162-6.0-6.000	6.000	162,0	97,5	294.312	4.181.199	87,6
185	Yes	VESTAS	V162-6.0-6.000	6.000	162,0	97,5	293.954	4.180.562	87,4
186	Yes	VESTAS	V162-6.0-6.000	6.000	162,0	97,5	292.065	4.180.783	95,1
187	Yes	VESTAS	V162-6.0-6.000	6.000	162,0	97,5	293.133	4.180.231	78,2
188	Yes	VESTAS	V162-6.0-6.000	6.000	162,0	97,5	292.376	4.179.920	70,5
189	Yes	VESTAS	V162-6.0-6.000	6.000	162,0	97,5	291.287	4.179.768	93,1
190	Yes	VESTAS	V162-6.0-6.000	6.000	162,0	97,5	290.950	4.180.246	111,1
191	No	REpower	MM 92-2.000	2.000	92,5	120,0	295.908	4.173.990	38,0
192	No	REpower	MM 92-2.000	2.000	92,5	120,0	293.788	4.174.139	27,8
193	No	REpower	MM 92-2.000	2.000	92,5	120,0	294.916	4.174.417	44,1
194	No	REpower	MM 92-2.000	2.000	92,5	120,0	295.911	4.174.802	45,0
195	No	REpower	MM 92-2.000	2.000	92,5	120,0	296.818	4.174.433	47,7
196	No	REpower	MM 92-2.000	2.000	92,5	120,0	293.371	4.175.083	64,9
197	No	REpower	MM 92-2.000	2.000	92,5	120,0	296.097	4.176.306	99,2
198	No	REpower	MM 92-2.000	2.000	92,5	120,0	294.868	4.175.197	50,0
199	No	REpower	MM 92-2.000	2.000	92,5	120,0	294.856	4.175.740	75,0
200	No	REpower	MM 92-2.000	2.000	92,5	120,0	295.567	4.175.898	95,7
201	No	REpower	MM 92-2.000	2.000	92,5	120,0	295.669	4.177.056	119,0
202	No	REpower	MM 92-2.000	2.000	92,5	120,0	296.484	4.177.170	118,9
203	No	REpower	MM 92-2.000	2.000	92,5	120,0	295.341	4.177.663	131,9
204	No	REpower	MM 92-2.000	2.000	92,5	120,0	296.781	4.178.332	151,5
205	No	REpower	MM 92-2.000	2.000	92,5	120,0	296.438	4.180.538	99,0
206	No	REpower	MM 92-2.000	2.000	92,5	120,0	295.811	4.181.292	96,3
207	No	REpower	MM 92-2.000	2.000	92,5	120,0	295.449	4.180.909	90,0
208	No	REpower	MM 92-2.000	2.000	92,5	120,0	296.278	4.181.612	102,9
209	No	REpower	MM 92-2.000	2.000	92,5	120,0	297.871	4.182.198	126,7
210	No	REpower	MM 92-2.000	2.000	92,5	120,0	297.668	4.182.644	133,1
211	No	REpower	MM 92-2.000	2.000	92,5	120,0	297.849	4.183.103	150,0
212	No	REpower	MM 92-2.000	2.000	92,5	120,0	295.225	4.182.168	97,0
213	No	REpower	MM 92-2.000	2.000	92,5	120,0	294.484	4.182.316	98,0
214	No	REpower	MM 92-2.000	2.000	92,5	120,0	293.671	4.182.585	125,0
215	No	REpower	MM 92-2.000	2.000	92,5	120,0	294.012	4.182.943	138,5
216	No	REpower	MM 92-2.000	2.000	92,5	120,0	294.787	4.183.242	106,9
217	No	REpower	MM 92-2.000	2.000	92,5	120,0	295.541	4.183.040	108,8
218	Yes	Siemens Gamesa	SG 6.6-170-6.600	6.600	170,0	115,0	286.779	4.183.630	130,8
219	Yes	Siemens Gamesa	SG 6.6-170-6.600	6.600	170,0	115,0	287.449	4.183.277	154,6
220	Yes	Siemens Gamesa	SG 6.6-170-6.600	6.600	170,0	115,0	288.109	4.183.517	139,3
221	Yes	Siemens Gamesa	SG 6.6-170-6.600	6.600	170,0	115,0	288.615	4.183.852	150,1
222	Yes	Siemens Gamesa	SG 6.6-170-6.600	6.600	170,0	115,0	289.202	4.183.972	152,0
223	Yes	Siemens Gamesa	SG 6.6-170-6.600	6.600	170,0	115,0	289.758	4.184.161	157,0
224	Yes	Siemens Gamesa	SG 6.6-170-6.600	6.600	170,0	115,0	289.910	4.185.140	156,6
225	Yes	VESTAS	V150-5.6-5.600	5.600	150,0	125,0	294.716	4.186.135	147,4
226	Yes	VESTAS	V150-5.6-5.600	5.600	150,0	125,0	294.579	4.185.693	133,5
227	Yes	VESTAS	V150-5.6-5.600	5.600	150,0	125,0	294.390	4.185.303	125,0
228	Yes	VESTAS	V150-5.6-5.600	5.600	150,0	125,0	293.348	4.184.830	117,1
229	Yes	VESTAS	V150-5.6-5.600	5.600	150,0	125,0	294.090	4.184.409	152,1
230	Yes	VESTAS	V150-5.6-5.600	5.600	150,0	125,0	294.016	4.183.846	125,2
231	Yes	VESTAS	V150-5.6-5.600	5.600	150,0	125,0	293.406	4.183.615	137,3
232	Yes	VESTAS	V150-5.6-5.600	5.600	150,0	125,0	292.764	4.183.199	122,5
233	No	FUHLÄNDER	FL 1000plus-1.000	1.000	58,0	82,0	288.771	4.185.748	157,6
234	No	FUHLÄNDER	FL 1000plus-1.000	1.000	58,0	82,0	285.736	4.184.712	126,4
235	No	FUHLÄNDER	FL 1000plus-1.000	1.000	58,0	82,0	286.481	4.185.114	128,1
236	No	FUHLÄNDER	FL 1000plus-1.000	1.000	58,0	82,0	287.025	4.185.280	140,3
237	No	FUHLÄNDER	FL 1000plus-1.000	1.000	58,0	82,0	287.317	4.185.764	150,1
238	No	FUHLÄNDER	FL 1000plus-1.000	1.000	58,0	82,0	287.952	4.185.784	153,0
239	No	FUHLÄNDER	FL 1000plus-1.000	1.000	58,0	82,0	288.277	4.185.847	150,0
240	No	FUHLÄNDER	FL 1000plus-1.000	1.000	58,0	82,0	289.199	4.185.315	150,0
241	Yes	VESTAS	V126-3.0-3.000	3.000	126,0	117,0	297.653	4.185.518	226,0
242	Yes	VESTAS	V126-3.0-3.000	3.000	126,0	117,0	297.709	4.184.813	199,7
243	Yes	VESTAS	V126-3.0-3.000	3.000	126,0	117,0	298.351	4.184.852	225,0
244	Yes	VESTAS	V126-3.0-3.000	3.000	126,0	117,0	298.951	4.184.371	210,3
245	Yes	VESTAS	V126-3.0-3.000	3.000	126,0	117,0	298.158	4.184.058	178,7
246	Yes	Siemens Gamesa	SG 6.6-170-6.600	6.600	170,0	115,0	296.387	4.188.167	249,6
247	Yes	Siemens Gamesa	SG 6.6-170-6.600	6.600	170,0	115,0	296.704	4.187.632	239,5
248	Yes	Siemens Gamesa	SG 6.6-170-6.600	6.600	170,0	115,0	296.446	4.187.224	223,1
249	Yes	Siemens Gamesa	SG 6.6-170-6.600	6.600	170,0	115,0	295.991	4.187.828	225,2
250	Yes	Siemens Gamesa	SG 6.6-170-6.600	6.600	170,0	115,0	295.554	4.187.334	205,1
251	Yes	Siemens Gamesa	SG 6.6-170-6.600	6.600	170,0	115,0	296.328	4.186.622	227,6
252	Yes	Siemens Gamesa	SG 6.6-170-6.600	6.600	170,0	115,0	295.241	4.187.030	181,0
253	Yes	Siemens Gamesa	SG 6.6-170-6.600	6.600	170,0	115,0	296.151	4.186.141	227,0
254	Yes	Siemens Gamesa	SG 6.6-170-6.600	6.600	170,0	115,0	294.078	4.187.057	175,0
255	Yes	Siemens Gamesa	SG 6.6-170-6.600	6.600	170,0	115,0	294.211	4.187.523	175,3
256	Yes	Siemens Gamesa	SG 6.6-170-6.600	6.600	170,0	115,0	293.586	4.187.208	175,9



## ZVI - Map Standard ZVI summary

Calculation: Impatto cumulativo Partanna 2 - Stato di progetto



Map: IGM maps 1:25000 , Print scale 1:100.000, Map center UTM (north)-WGS84 Zone: 33 East: 296.830 North: 4.187.461

▲ WTG in progetto \* Impianti esistenti \* Impianti in fase di autorizzazione \* Impianti autorizzati

Grid step: 25 m - Eye height: 1,7 m - Calculation height: Total height



## ZVI - Map Standard ZVI summary

Calculation: Impatto cumulativo Partanna 2 - Stato di progetto

