



REGIONE  
MOLISE



COMUNE DI  
CASACALENDA



COMUNE DI  
MORRONE DEL SANNIO



COMUNE DI  
SANT'ELIA A PIANISI



COMUNE DI  
RIPABOTTONI

--

<i>Committente:</i>	RWE	RWE RENEWABLES ITALIA S.R.L. via Andrea Doria, 41/G - 00192 Roma P.IVA/C.F. 06400370968 PEC: rwerenewablesitaliasrl@legalmail.it
---------------------	-----	---



<i>Titolo del Progetto:</i>	PARCO EOLICO "SANT'ELIA"
-----------------------------	--------------------------

<i>Documento:</i>	PROGETTO DEFINITIVO	<i>N° Documento:</i>	PESE_EASR_14
-------------------	---------------------	----------------------	--------------

ID PROGETTO	PESE	DISCIPLINA:	PD	TIPOLOGIA:	R	FORMATO:	A4
-------------	------	-------------	----	------------	---	----------	----

<i>Elaborato:</i>	Relazione sulle caratteristiche anemologiche del sito
-------------------	---

FOGLIO:	1 di 1	SCALA:	-	NOME FILE:	PESE_EASR_14_Relazione sulle caratteristiche anemologiche del sito.pdf
---------	--------	--------	---	------------	--

<i>Progettisti:</i>	<i>Progettazione:</i>
DNV Italy S.r.l.	 <b>NEWDEVELOPMENTS</b>  <b>NEW DEVELOPMENTS srl</b> piazza Europa, 14 - 87100 Cosenza (CS)

Rev:	Data Revisione:	Descrizione Revisione	Redatto	Controllato	Approvato
00	12/04/2023	PRIMA EMISSIONE	New. Dev.	RWE	RWE

**IMPORTANT NOTICE AND DISCLAIMER**

1. This document is intended for the sole use of the Customer as detailed on the front page of this document to whom the document is addressed and who has entered into a written agreement with the DNV entity issuing this document ("DNV"). To the extent permitted by law, neither DNV nor any group company (the "Group") assumes any responsibility whether in contract, tort including without limitation negligence, or otherwise howsoever, to third parties (being persons other than the Customer), and no company in the Group other than DNV shall be liable for any loss or damage whatsoever suffered by virtue of any act, omission or default (whether arising by negligence or otherwise) by DNV, the Group or any of its or their servants, subcontractors or agents. This document must be read in its entirety and is subject to any assumptions and qualifications expressed therein as well as in any other relevant communications in connection with it. This document may contain detailed technical data which is intended for use only by persons possessing requisite expertise in its subject matter.
2. This document is protected by copyright and may only be reproduced and circulated in accordance with the Document Classification and associated conditions stipulated or referred to in this document and/or in DNV's written agreement with the Customer. No part of this document may be disclosed in any public offering memorandum, prospectus or stock exchange listing, circular or announcement without the express and prior written consent of DNV. A Document Classification permitting the Customer to redistribute this document shall not thereby imply that DNV has any liability to any recipient other than the Customer.
3. This document has been produced from information relating to dates and periods referred to in this document. This document does not imply that any information is not subject to change. Except and to the extent that checking or verification of information or data is expressly agreed within the written scope of its services, DNV shall not be responsible in any way in connection with erroneous information or data provided to it by the Customer or any third party, or for the effects of any such erroneous information or data whether or not contained or referred to in this document.
4. Any wind or energy forecasts estimates or predictions are subject to factors not all of which are within the scope of the probability and uncertainties contained or referred to in this document and nothing in this document guarantees any particular wind speed or energy output.



Project name: Sant'Elia Wind Farm DNV - Energy Systems  
Report title: Indicative Energy Production Assessment Report DNV Italy S.r.l.  
Customer: RWE Renewables Italia S.r.l., Via Cavour, 94, 40026 Imola BO, Italy  
Via Andrea Doria 41/G 00192 Roma, Italy  
Customer contact: Domenico Alberti Tel: +39 0542 21859  
Date of issue: 2023-04-19  
Project No.: 10425619  
Organisation unit: Energy Systems  
Report No.: 01, Rev. B  
Document No.: L243648-ITIM-R-01-C  
Applicable contract(s) governing the provision of this Report: L243648-ITIM-VO-02-A

**Objective:**

Provide an Indicative Energy Production Assessment Report for the Sant'Elia Wind Farm

**Prepared by:**

Arian Hoxha  
Engineer, Project Development & Analytics,  
Italy

**Verified by:**

Jacopo Antonelli  
Senior Engineer, Project Development &  
Analytics, Italy

**Approved by:**

Alice Vergnani  
Senior Engineer, Project Development &  
Analytics, Italy

Copyright © DNV 2023. All rights reserved. Unless otherwise agreed in writing: (i) This publication or parts thereof may not be copied, reproduced or transmitted in any form, or by any means, whether digitally or otherwise; (ii) The content of this publication shall be kept confidential by the customer; (iii) No third party may rely on its contents; and (iv) DNV undertakes no duty of care toward any third party. Reference to part of this publication which may lead to misinterpretation is prohibited.

**DNV Distribution:**

- Open  
 Internal use only  
 Commercial in confidence  
 Confidential  
 Secret

**Keywords:**

"Indicative Energy Assessment, Sant'Elia, SG170, WindFarmer"

Rev. No.	Date	Reason for Issue	Prepared by	Verified by	Approved by
A	2023-02-17	First issue	Arian Hoxha	Jacopo Antonelli	Giacomo Rossitto
B	2023-04-19	New layout and external wakes	Arian Hoxha	Jacopo Antonelli	Alice Vergnani
B	2023-04-20	Typo correction	Arian Hoxha	Jacopo Antonelli	Alice Vergnani

## Table of contents

1	INTRODUCTION.....	1
2	PROJECT DESCRIPTION.....	2
2.1	General	2
2.2	Site description	3
2.3	Turbine models	3
2.4	Turbine layout	4
2.5	Neighbouring wind farms	4
3	INDICATIVE WIND ANALYSIS.....	5
3.1	Methodology	5
3.2	Results	6
4	INDICATIVE ENERGY ESTIMATE.....	8
4.1	Methodology	8
4.2	Results	8
5	UNCERTAINTIES.....	10
6	OBSERVATIONS AND RECOMMENDATIONS.....	11
7	REFERENCES.....	12

APPENDIX A - WIND FARM SITE INFORMATION

APPENDIX B - WIND TURBINE DATA

APPENDIX C – MEAN WIND SPEED AT TURBINE LOCATIONS



## List of abbreviations

Abbreviation	Meaning
AEP	Annual Energy Production
ASL	Above Sea Level
BOP	Balance of plant
DNV	DNV Italy S.r.l.
NASA	National Aeronautics and Space Administration
P50	Exceedance probability: The probability of reaching a higher or lower annual energy production is 50:50
P90	Exceedance probability: The probability of reaching a higher or lower annual energy production is 90%
PC	Power curve
PLF	Plant Load Factor (equivalent to Capacity Factor)
RD	Rotor Diameter
SPV	Special Purpose Vehicle
SRTM	Shuttle Radar Topography Mission
TI	Turbulence intensity
WTG	Wind turbine Generator



## 1 INTRODUCTION

RWE Renewables Italia S.r.l. (the "Customer") retained DNV Italy S.r.l. (DNV), part of the DNV Group, to complete an independent indicative analysis of the wind regime and energy production of the proposed Sant'Elia Wind Farm project. This report is issued to RWE Renewables Italia S.r.l. pursuant to a written agreement dated 13 April 2023 arising from the Proposal L243648-ITIM-VO-02, revision A, dated 07 April 2023.

DNV has previously undertaken an indicative energy assessment of the Project for the Customer, as presented in the DNV report referenced L243648-ITIM-R-01 Revision A dated 2023-02-17. The updated results of this assessment are based on a new wind turbine layout and additional external wakes.

The Project is located approximately 20 km northeast of the city of Campobasso, in Molise, and comprises of one wind farm, totalling 8 turbines with associated infrastructure.

As no on-site wind speed measurements were available, the results presented in this report are indicative in nature and subject to relatively high levels of uncertainty. It is recommended that the results of this assessment are considered with caution due to the level of uncertainty.

It is recommended that on-site measurements are undertaken at the project site using an IEC-compliant mast with at least three quarters of the proposed hub height, and that a full energy assessment is undertaken after at least 1 year of on-site data are available.

## 2 PROJECT DESCRIPTION

### 2.1 General

As shown in Figure 2-1 the Project is located in Molise. The Sant’Elia Wind Farm is approximately 18 km northeast of Campobasso.

DNV has analysed one layout and 1 turbine configurations for the wind farm, as provided by the Customer /1/. The proposed configurations are summarised in the table below.

**Table 2-1 Proposed configurations**

Configuration	Number of turbines	Wind farm rated power [MW]	Turbine manufacturer	Turbine model	Turbine hub height [m]
A	8	52.8	Siemens Gamesa	SG170-6.6MW	115

**Figure 2-1 Location of the proposed Sant’Elia Wind Farm**





## 2.2 Site description

Figure 2-2 is a map of the site, showing the turbine locations and elevation contours.

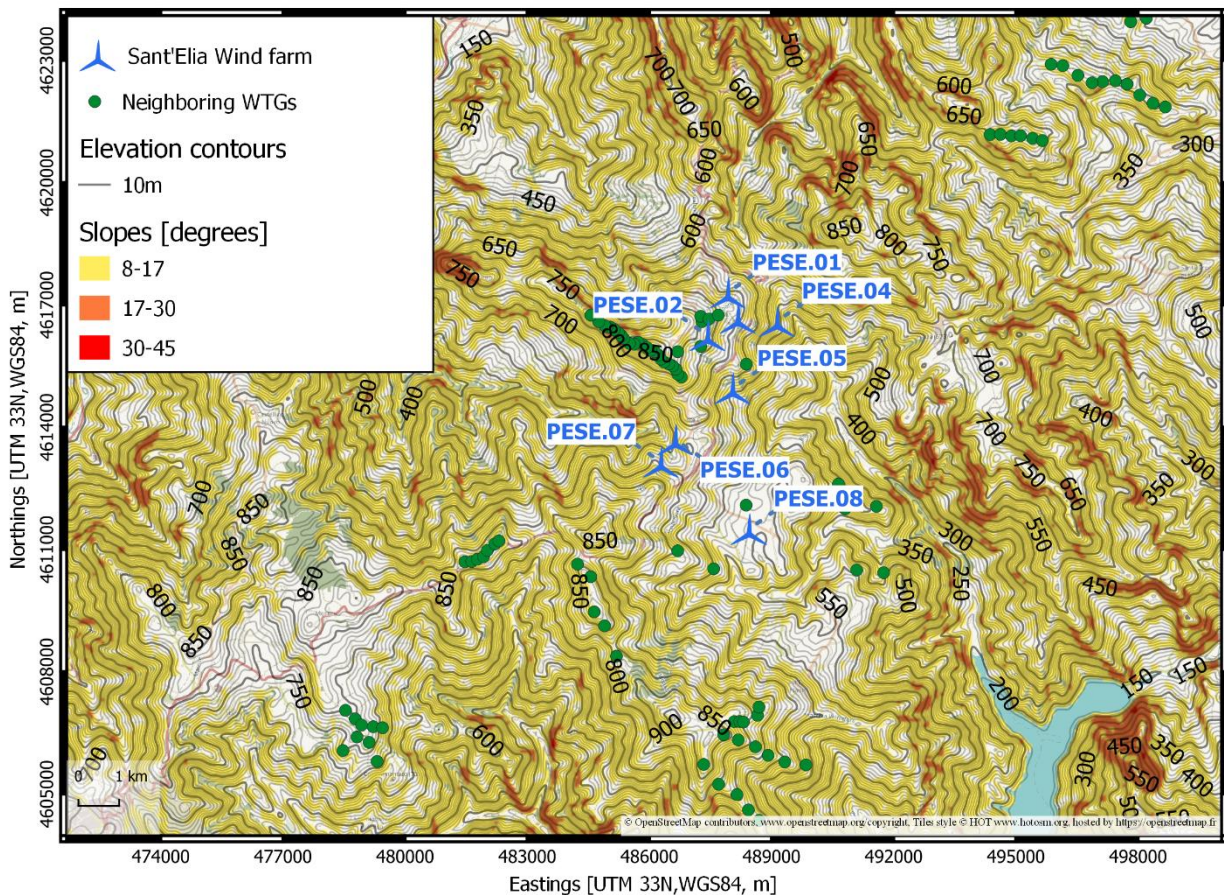
DNV has not visited the site. Publicly available aerial images have been used to assess the ground cover. The Project is located in a hilly area. The terrain at the site is considered to be moderately complex, since there are few areas of steep slopes within the Project area. The elevation of the proposed turbine locations ranges between approximately 555 m and 767 m above sea level.

The ground cover at the site consists predominantly of agricultural land, bushes, rocky outcrops and forestry, with a number of small settlements across the site area. 5 km from the site area there is the city of Sant’Elia a Pianisi and some forestry is located around the project area.

Measurements of the wind regime have not been made at the site.

Turbine coordinates are shown in Appendix A.

**Figure 2-2 Map of the Sant’Elia Wind Farm**



## 2.3 Turbine models

Table 2-2 summarises the turbine model under consideration for the Sant’Elia Wind Farm project.



**Table 2-2 - Proposed turbine model parameters**

Turbine	Rated power [MW]	Hub height [m]	Peak power coefficient [Cp]	PC air density [kg/m <sup>3</sup> ]	PC turbulence intensity range [%]	Operational Temperature
SG170 - 6.6	6.6	115	0.48	1.225	5% < TI <sub>i</sub> < 12%	-20°C to +40°C

Using historical pressure and temperature records from nearby meteorological stations and standard lapse rate assumptions, the long-term mean air density at the site is estimated to be 1.122 kg/m<sup>3</sup> at hub elevation of 773 m above sea level.

The characteristics and performance data of the turbine are presented in Appendix B. The power curve used in this analysis, /4/, has been provided by the Customer. The power curve is based on the manufacturer's calculations and has been adjusted to the site density. It is noted that the power curve supplied is only available at sea-level air density. This necessitates a large extrapolation to the predicted long-term air density of the site with additional adjustment and uncertainty associated; it is therefore recommended that a power curve be provided that is close to the site air density.

## 2.4 Turbine layout

Turbine layouts have been supplied by the Customer /1/. The following comments are made:

- A minimum inter-turbine separation of 3.9 rotor diameters is proposed in the prevailing northwest wind direction sector between turbines PESE.01 and PESE.03. The increased turbulence levels at these positions have the potential to increase fatigue loads.
- Some turbines are proposed near slopes. The slopes may increase the ambient turbulence and cause significant flow inclination at these turbines.

It is recommended that this is investigated further through a site meteorological conditions analysis, and that the turbine supplier be approached at an early stage to gain approval for the proposed layout and to ensure that sufficient warranty provisions are in place to cover these issues.

It is noted that dwellings were observed within the proposed wind farm area based on satellite imagery. DNV is not aware whether these are used for permanent living or they have cadastral records. The Customer should investigate the state of these buildings with the cadastral local office and in the light of this information update the constraints to the layout design where needed.

## 2.5 Neighbouring wind farms

The Sant'Elia Wind Farm is located in an area of high wind farm development activity. Based on the data provided by the Customer /1/ and the review of publicly available data sources /3/, DNV has identified several operational wind turbines near the project.

In the absence of a site visit, DNV estimated the external wake losses based on generic assumptions for these turbines. The operation of these wind farms and the resulting wake effect was included in the analysis.

It is likely that additional wind energy projects will be built in the vicinity of the Project. However, there is insufficient information available to reasonably estimate the impact of future developments on the Project within the scope of work, and these have not been considered here. The effect of the proposed neighbouring wind farms provided by the Customer has been taken into account. It is recommended that any additional information regarding the neighbouring wind farms and future developments is collected and the wake analysis reviewed accordingly.

## 3 INDICATIVE WIND ANALYSIS

### 3.1 Methodology

The indicative analysis of the site wind regime involved several steps, which are summarised below:

- The long-term frequency distribution at the site was derived based on Vortex data. A tabular distribution (.tab file) based on a 100 meters horizontal resolution wind resource grid at 115 m height was extracted at the position of PESE.03 for the northern cluster of turbines (PESE.01 to PESE.05) and at a location approximately 750 m northeast of PESE.08 for the southern cluster of turbines (PESE.06 to PESE.08). This position was selected based on the layout initially provided by the Customer /2/ (corresponding to turbine position PESE 04), but is considered to be representative of the southern cluster defined above from the latest layout as provided by the Customer and analysed in the report herein.
- In parallel, the long-term wind speed has been predicted for the site at the proposed hub height at the same positions as described above, using the DNV Windicative platform, which is based on aggregated anonymised data from DNV experience. The search radius considered for the Windicative estimate is 50 km.
- The Windicative tool is intended to be used in those areas with significant wind farm development where DNV experience is sufficiently high. In that case, DNV considers that the uncertainty associated to Windicative predicted wind speeds is lower than corresponding Vortex data, as the platform is based on measured data. Therefore, the Vortex frequency distribution for the site was scaled to the predicted Windicative long-term wind speed to derive the hub height wind speed and direction frequency distribution at each turbine location.

Vortex data and DNV Windicative platform are described in more details in Sections 3.1.1 and 3.1.2 below.

Despite the use of Vortex and Windicative platform based on measured data, it must be acknowledged that, due to the absence of on-site measurements, the prediction of the long-term wind speed presented here is subject to a relative high level of uncertainty.

#### 3.1.1 Vortex virtual data

In the absence of suitable on-site wind data, the wind frequency distribution at the site has been estimated via the use of Vortex data.

Vortex data is developed from a mesoscale-model-based dynamical downscaling system that provides high-resolution modelled wind data for any location in the world, both on and offshore. At the heart of Vortex data is the Weather Research and Forecasting (WRF) Model, a mesoscale model developed and maintained by a consortium of more than 150 international agencies, laboratories, and universities, which employs a sophisticated land surface model, and high-resolution land- and sea-surface state data. Vortex data is driven by a number of high-resolution inputs, such as Modern Era Retrospective-analysis for Research and Applications (MERRA 2) data or European Centre for Medium-Range Weather Forecasts data (ERA 5) and downscaled to account for the effects of the local terrain and vegetation in and around the potential wind farm site.

A virtual tabular distribution (.tab file), centred at the site and based on a 100 meters horizontal resolution grid, was obtained for the analysis. The .tab file was obtained at 115 m height, and then scaled to the 115 m long-term wind speed predicted by Windicative.

#### 3.1.2 DNV Windicative

DNV has used outputs from its Windicative service to assist with calibration of wind speeds and reduce uncertainty.

By leveraging the industry's largest commercial database of wind energy assessment experience, Windicative is able to provide data-driven estimates of hub height wind resource at locations without measurements. The distributions of wind speed at both the site and within the region provide a more informed view when compared to virtual series on their own.

The Windicative process begins by radially querying DNV’s energy assessment database for previous observations of the wind regime around the Customer’s site. The search radius has been defined to include a minimum number of observations around each site in order to anonymise data from the DNV database and include a sufficient number of points in the analysis. The regional wind speed data, representative of the long-term, are adjusted to hub height, using a localised shear exponent and the Power Law, and then transformed, using a windiness ratio calculated from a mesoscale model, into a series of predictions of mean wind speed at the Customer’s location of interest. A cross prediction analysis is conducted to quantify confidence in the model and filter for outliers. The final predictions are then aggregated into a distribution to inform the mean wind speed and standard deviation.

Both the use of the Global Wind Atlas 3.0 /5/ and European Wind Atlas /6/ have been considered and tested. Based on this analysis, DNV has selected the Global Wind Atlas to be used as mesoscale model within the Windicative tool.

Global Wind Atlas 3.0 /5/ is a free, web-based application developed, owned and operated by the Technical University of Denmark (DTU). The Global Wind Atlas 3.0 is released in partnership with the World Bank Group, utilizing data provided by Vortex, using funding provided by the Energy Sector Management Assistance Program (ESMAP). For additional information: <https://globalwindatlas.info>.

### 3.2 Results

The resulting estimated wind speed at the proposed hub height is presented in Table 3-1. The corresponding hub height wind rose and wind speed distribution are shown in Figure 3-1.

**Table 3-1 Estimated site wind speeds**

Configuration	Hub height [m]	Average Wind Farm wind speed [m/s]
A	115	6.4

**Figure 3-1 Wind Farm site long-term hub-height wind rose and frequency distribution at 115 m – northern cluster**

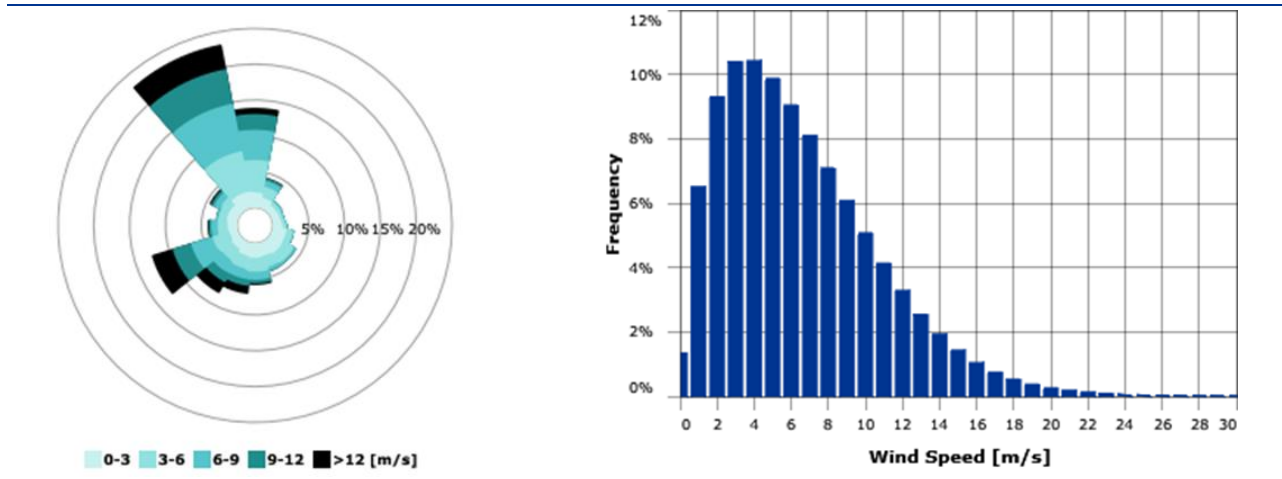
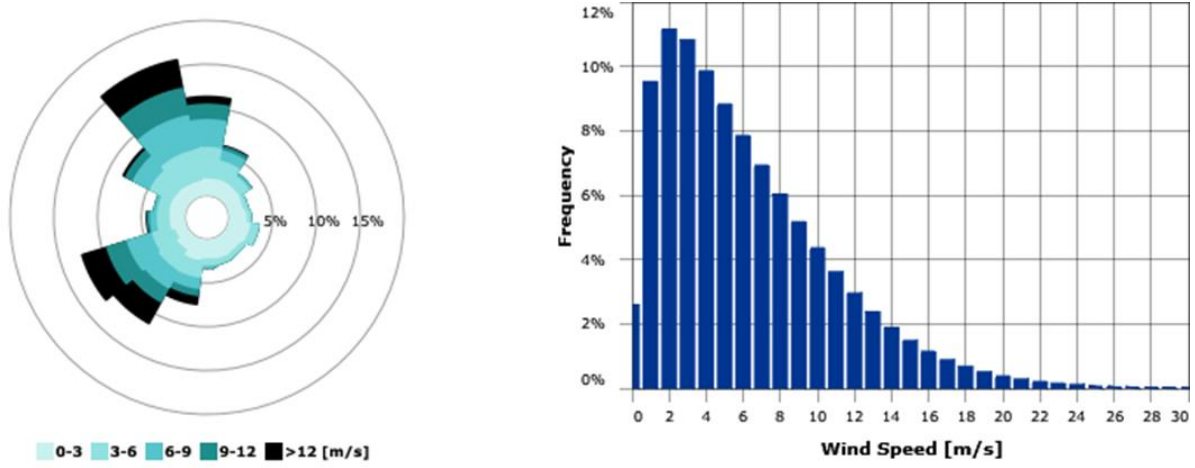


Figure 3-2 Wind Farm site long-term hub-height wind rose and frequency distribution at 115 m – southern cluster



## 4 INDICATIVE ENERGY ESTIMATE

### 4.1 Methodology

The gross energy production at the individual turbine locations has been calculated using the WindFarmer:Analyst software /7/ using the association method and the results of the wind analysis, together with the turbine power curve.

The projected net energy production of the wind farm has been calculated by applying a number of energy loss factors to the calculated gross energy production. The predictions represent the estimate of the annual production expected over the first 10 years of operation although wind farms typically experience some time dependency in availability and other loss factors before mature operation is reached.

It is stressed that the estimate of energy production is subject to several assumptions and is therefore subject to substantial uncertainty.

### 4.2 Results

The resulting energy production estimate is presented in Table 4-1, including calculation of the array and air density effects as well as assumptions or estimates due to the electrical transmission losses, availability, power curve adjustments, substation maintenance and environmental effects.

The net energy prediction presented below represents the long-term mean, 50% exceedance level, for the annual energy production of the wind turbine. This value is the best estimate of the long-term mean value to be expected from the project. There is therefore a 50% chance that, even when taken over very long periods, the mean energy production will be less than the value given. A more detailed description of potential sources of energy loss that have been estimated, assumed or not considered is given in Table 4-2 below.

**Table 4-1 Indicative Energy production summary of the Sant'Elia Wind Farm**

Layout	A	
<b>Turbine</b>	<b>SG170-6.6</b>	
<b>Wind Farm Rated Power</b>	<b>52.8</b>	<b>MW</b>
<b>Gross Energy Output</b>	<b>150.8</b>	<b>GWh/annum</b>
Wake effect	94.2	% Project Specific
Availability	96.3	% DNV Standard
Electrical efficiency	97.0	% DNV Standard
Turbine performance	97.6	% Project Specific
Environmental	100.0	% Not considered
Curtailment	100.0	% Not considered
<b>Net Energy Output</b>	<b>129.6</b>	<b>GWh/annum</b>
<b>Net Capacity Factor</b>	<b>28.0</b>	<b>%</b>

Table 4-2 Energy loss parameters

Loss	Assumption for this analysis and rationale
<b>Wake effect</b>	
<b>Internal wake and blockage effects</b>	<i>The wake effects have been calculated using the DNV WindFarmer: Analyst Eddy Viscosity large wind farm wake model. The turbine interaction blockage effect has been estimated using an empirical model based on more than 50 CFD simulations /8/.</i>
<b>External wake</b>	<i>Wake effects of surrounding operational wind farms have been calculated using the WindFarmer wake model. It is noted that any turbine interaction blockage effects caused by neighboring turbines are included in Internal wake and blockage effects.</i>
<b>Future wake</b>	<i>The effect of the proposed neighbouring wind farms provided by the Customer has been taken into account.</i>
<b>Availability</b>	
<i>The availability loss factors presented here include turbine, balance of plant (BoP) and grid losses, and they have been applied on a project specific basis, taking into account the track record of the turbines under consideration. The details of the track record of the local grid system, and Operation and Maintenance arrangements have not been assessed. No detailed project specific engineering review has been undertaken, and these assumptions may change as part of such a review. This work is normally undertaken as part of a full due diligence exercise, although DNV can complete these reviews at an earlier stage of the project, if required. Project specifics for the availability values are detailed below. Terms are defined in the DNV white paper /9/.</i>	
<b>Turbine availability</b>	<i>A turbine availability of 97.0 % has been assumed for the first 10 years of operation.</i>
<b>BOP availability</b>	<i>A BOP availability of 99.5 % has been assumed.</i>
<b>Grid availability</b>	<i>A grid availability of 99.8 % has been assumed.</i>
<b>Electrical efficiency</b>	
<i>The details of the specific balance of plant infrastructure and grid connection point have not been considered. The assumptions below would be subject to change, were a detailed assessment of the electrical infrastructure to be undertaken.</i>	
<b>Electrical efficiency</b>	<i>An electrical efficiency of 97.0% has been assumed.</i>
<b>Wind farm consumption</b>	<i>It is assumed that non-operational plant electrical consumption is an operational cost and not a loss factor.</i>
<b>Turbine performance</b>	
<i>The power curve assumptions made here would be subject to change, where a thorough review of the Turbine Supply Agreement and supporting contract documentation is undertaken.</i>	
<b>Generic power curve adjustment</b>	<i>The power curve supplied is only available at sea-level air density. It has therefore been adjusted to the site air density.</i>
<b>High wind speed hysteresis</b>	<i>It has been assumed that the High Wind Speed Hysteresis effectively reduces the cut-out wind speed for the turbines: SG170-6.6 from 25 m/s to 23.5 m/s between the actual turbine cut-out and re cut-in wind speed for the purpose of the energy calculation.</i>
<b>Site-specific power curve adjustment</b>	<i>Site-specific wind flow issues (atmospheric stability, turbulence, wind shear, and upflow angle) will adversely affect the performance of the turbines /10/. In the absence of on-site measurements, DNV has assumed an average value of 99.8% based on typical losses applicable in Italy. This loss factor also accounts for the average blockage effect inherent on power performance test measurements.</i>
<b>Sub-optimal performance</b>	<i>A factor of 99.5 % has been assumed to account for sub-optimal performance.</i>
<b>Performance degradation</b>	<i>The performance of wind turbines can be affected by degradation of blades and other components. This includes the accretion of dirt, which may be washed off by rain from time to time, as well as physical degradation of the blade surface, such as leading-edge erosion, and other components, over prolonged operation. This is a time dependent phenomenon which DNV models as increasing linearly at a rate of 0.1% per year for 20 years, resulting in an average of 1% loss over 20 years. In harsh climates these values are increased by 0.3%.</i>
<b>Environmental</b>	
<b>Performance degradation – icing</b>	<i>The effect of performance degradation due to ice accretion on the blades when the turbine is operational has not been considered.</i>
<b>Icing shutdown</b>	<i>The energy effect of downtime due to ice accretion on the turbine causing the turbine to shut down or not to start has not been considered.</i>
<b>Temperature shutdown</b>	<i>This factor accounts for loss from high temperature or low temperature shutdown of the turbine. It is recommended to approach the manufacturer to confirm if no de-rating strategy is to be considered for the turbine under analysis. DNV may need to review this loss if additional information is made available.</i>
<b>Site access</b>	<i>Adverse impacts on site access due to extreme remoteness or weather conditions have not been considered.</i>
<b>Tree growth</b>	<i>The influence of tree growth in the vicinity of the wind farm has not been considered.</i>
<b>Curtailments</b>	
<b>Wind sector management</b>	<i>The possibility of wind sector management has not been considered.</i>
<b>Grid curtailment</b>	<i>The possibility of grid curtailment has not been considered.</i>
<b>Noise, visual and environmental curtailment</b>	<i>The possibility of noise, visual or environmental curtailment has not been considered.</i>
<b>Asymmetric production effect</b>	
<i>The effect of changes in wind speed has an asymmetric impact on project production, considering the non-linear relationship of wind speed to energy. Therefore, when wind speed variability risk is converted into production risk the resulting distribution is asymmetric, with a P50 (median) value that is less than the average.</i>	



## 5 UNCERTAINTIES

The results presented in this report are indicative in nature and subject to relatively high levels of uncertainty, due to the inherent uncertainties related to the prediction of the wind regime in the absence of on-site measurements, the assumptions used in the estimation of losses, and the characteristics of the site terrain and surrounding area.

Table 5-1 below shows the probability of exceedance values for the 10-year production values for the layout scenarios.

**Table 5-1 Summary of project indicative net average energy production**

Layout	10-year [GWh/annum] Probability of exceedance		
	90 %	75 %	50 %
A	97.2	112.5	129.6

## 6 OBSERVATIONS AND RECOMMENDATIONS

No on-site wind data has been recorded at the project site. The wind regime at the site has been estimated via the use of Vortex data and DNV Windicative platform. The following observations and recommendations are made regarding this analysis:

1. The results presented in this report are indicative in nature due to the lack of on-site measurements and subject to relatively high levels of uncertainty. It is recommended that the results of this assessment are considered with caution due to the level of uncertainty.
2. It is recommended that on-site measurements are undertaken at the project site using an IEC-compliant mast with at least three quarters of the proposed hub height, and that a full energy assessment is undertaken after at least 1 year of on-site data are available.
3. The power curve supplied is only available at standard air density. This necessitates a large extrapolation to the predicted long-term air density of the site. It is recommended that a power curve at or close to the site air density be provided.
4. The site is proposed within a region of high wind farm development activity. It is likely that additional wind energy projects exist or will be built in the vicinity of the Project. The effect of the proposed neighbouring wind farms provided by the Customer has been taken into account. However, it is recommended that any additional information regarding the neighbouring wind farms and future developments is collected and the wake analysis reviewed accordingly.
5. It is noted that, based on satellite imagery, dwellings were observed within the proposed wind farm area. DNV is not aware whether these are used for permanent living or they have cadastral records. DNV recommends that the noise levels at these locations are carefully considered and assessed. Shadow flicker may also be an issue. The Customer should investigate the state of these buildings with the cadastral local office and in the light of this information update the constraints to the layout design where needed.
6. A minimum inter-turbine separation of 3.9 rotor diameters is proposed in some direction sectors. No wind sector management strategy has been supplied and DNV has not included any losses which may be associated with this. The increased turbulence levels have the potential to increase fatigue loads and it is recommended that the turbine supplier be approached at an early stage to gain approval for the proposed layout.
7. The wind turbine is proposed to be located close to slopes or a short distance downhill from ridge tops. These slopes may cause significant upflow and turbulence at these turbine locations. It is recommended that the levels of up flow and turbulence are measured at these locations. These slopes will also make the construction of the wind farm difficult and may also require costly foundations. It is recommended that the turbine manufacturer be approached at an early stage to gain approval for the location of the turbines in relation to the steep slopes and the turbine manufacturer confirms that all proposed turbine positions are acceptable and that sufficient warranty provisions are in place to cover these issues.
8. There are a number of losses for which DNV's standard assumptions have been made at this stage. It is recommended that the Customer considers each of these points carefully. They may vary materially from standard assumptions and can often be mitigated to some extent. No detailed project specific engineering review has been undertaken, and these assumptions may change as part of such a review.

## 7 REFERENCES

- /1/ Email from Domenico Alberti, RWE Renewables Italia, to Arian Hoxha, DNV, on 2023-04-05
- /2/ DNV report referenced L243648-ITIM-R-01 Revision A dated 2023-02-17
- /3/ Google Earth™ mapping service.
- /4/ Siemens Gamesa, “Developer Package – SG6.6-170”, ref. D283047/014, dated 2022-05-31
- /5/ Global Wind Atlas 3.0, <https://globalwindatlas.info>
- /6/ New European Wind Atlas: <https://map.neweuropeanwindatlas.eu/>
- /7/ Garrad Hassan and Partners Ltd, “WindFarmer Theory Manual”, January 2011.
- /8/ Bleeg. J et al, “Wind Farm Blockage and the Consequences of Neglecting Its Impact on Energy Production”, June 2018.
- /9/ DNV White Paper, “Definitions of Availability Terms for the Wind Industry”, Document No. EAA-WP-15, issue A, dated 9 August 2017.
- /10/ Geer, T. “How well are we predicting turbine performance”, DNV, EWEA, November 2015.

## APPENDIX A - WIND FARM SITE INFORMATION

**Table A-1 Turbine coordinates of the Sant'Elia Wind Farm**

<b>Turbine</b>	<b>Easting <sup>1</sup> [m]</b>	<b>Northing <sup>1</sup> [m]</b>	<b>Height of base [m]</b>
PESE.01	487922	4617298	706
PESE.02	487425	4616250	767
PESE.03	488169	4616680	713
PESE.04	489131	4616598	565
PESE.05	488038	4614946	610
PESE.06	486633	4613694	658
PESE.07	486277	4613145	693
PESE.08	488442	4611494	557

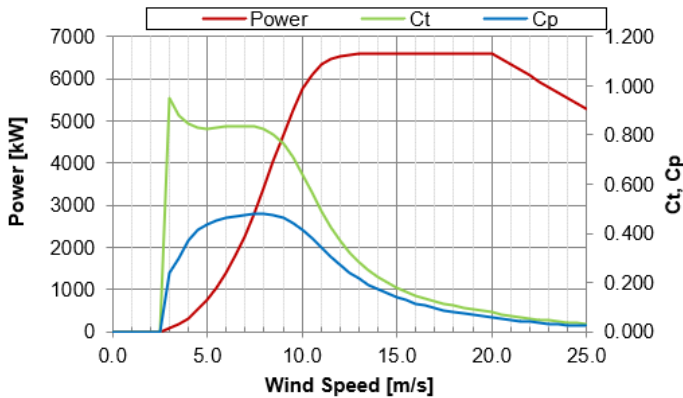
1 - Coordinate system is UTM, Zone 33, WGS84 datum

## APPENDIX B - WIND TURBINE DATA

Table B-1 Turbine data for the SG170 – 6.6

Manufacturer	Siemens Gamesa	Hub height wind speed [m/s]	Electrical power [kW]	Thrust coefficient [-]
Turbine	SG170 – 6.6	1	0	0.000
Power control	Pitch	2	0	0.000
Rated power	6600 kW	3	89	0.953
Diameter	170 m	4	328	0.847
Hub height	115 m	5	759	0.824
Rotor speed	-	6	1393	0.833
Air density	1.225 kg/m <sup>3</sup>	7	2272	0.837
Turbulence intensity	5% to 12%	8	3407	0.825
Peak Cp	0.48	9	4685	0.765
Cut-out 10-minute mean wind speed	25.0 m/s	10	5753	0.640
Restart 10-minute mean wind speed	22.0 m/s	11	6327	0.493
		12	6531	0.371
		13	6585	0.284
		14	6597	0.223
		15	6599	0.180
		16	6600	0.148
		17	6600	0.124
		18	6600	0.106
		19	6600	0.093
		20	6600	0.082
		21	6336	0.064
		22	6072	0.054
		23	5808	0.046
		24	5544	0.039
		25	5280	0.034



The graph plots Power [kW], Ct, and Cp against Wind Speed [m/s]. The x-axis ranges from 0.0 to 25.0 m/s. The left y-axis is Power [kW] (0 to 7000) and the right y-axis is Ct, Cp (0.000 to 1.200). Power (red line) starts at 0 at 3 m/s, rises to a plateau of 6600 kW between 15 and 20 m/s, and then declines. Ct (green line) peaks at approximately 0.95 at 3 m/s and then gradually decreases. Cp (blue line) peaks at approximately 0.48 at 8 m/s and then decreases.

Source: /4/

## APPENDIX C – MEAN WIND SPEED AT TURBINE LOCATIONS

**Table C-1 Mean wind speed at turbine locations – Configuration A**

Turbine	Easting <sup>1</sup>	Northing <sup>1</sup>	Hub height	Mean wind speed <sup>2</sup>
PESE.01	487922	4617298	115	6.5
PESE.02	487425	4616250	115	6.6
PESE.03	488169	4616680	115	6.5
PESE.04	489131	4616598	115	5.9
PESE.05	488038	4614946	115	6.1
PESE.06	486633	4613694	115	6.6
PESE.07	486277	4613145	115	6.9
PESE.08	488442	4611494	115	6.0

<sup>1</sup> – Coordinate system is UTM, Zone 33, WGS84 datum

<sup>2</sup> – Wind speed at the location of the turbine, not including wake effects.





## **About DNV**

DNV is a global quality assurance and risk management company. Driven by our purpose of safeguarding life, property and the environment, we enable our customers to advance the safety and sustainability of their business. We provide classification, technical assurance, software and independent expert advisory services to the maritime, oil & gas, power and renewables industries. We also provide certification, supply chain and data management services to customers across a wide range of industries. Operating in more than 100 countries, our experts are dedicated to helping customers make the world safer, smarter and greener.