

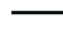




**LEGENDA**  
**IMPIANTO EOLICO DI POTENZA PARI A 60,00 MW**


cabina Utente e Stazione Elettrica RTN 


AEROGENERATORI IN PROGETTO 


CAVIDOTTI 

Beni Tutelati 


area vasta 50xh max 


tratturi 


confine regionale 

Immobili ed aree di notevole interesse pubblico  
 Vincoli D.Lgs.42/2004 c.d. "decretati"  
 [artt.136, 157, 142 c. 1 lett. M] 


**LEGENDA**  
**IMPIANTO EOLICO DI POTENZA PARI A 60,00 MW**


cabina Utente e Stazione Elettrica RTN 


AEROGENERATORI IN PROGETTO 

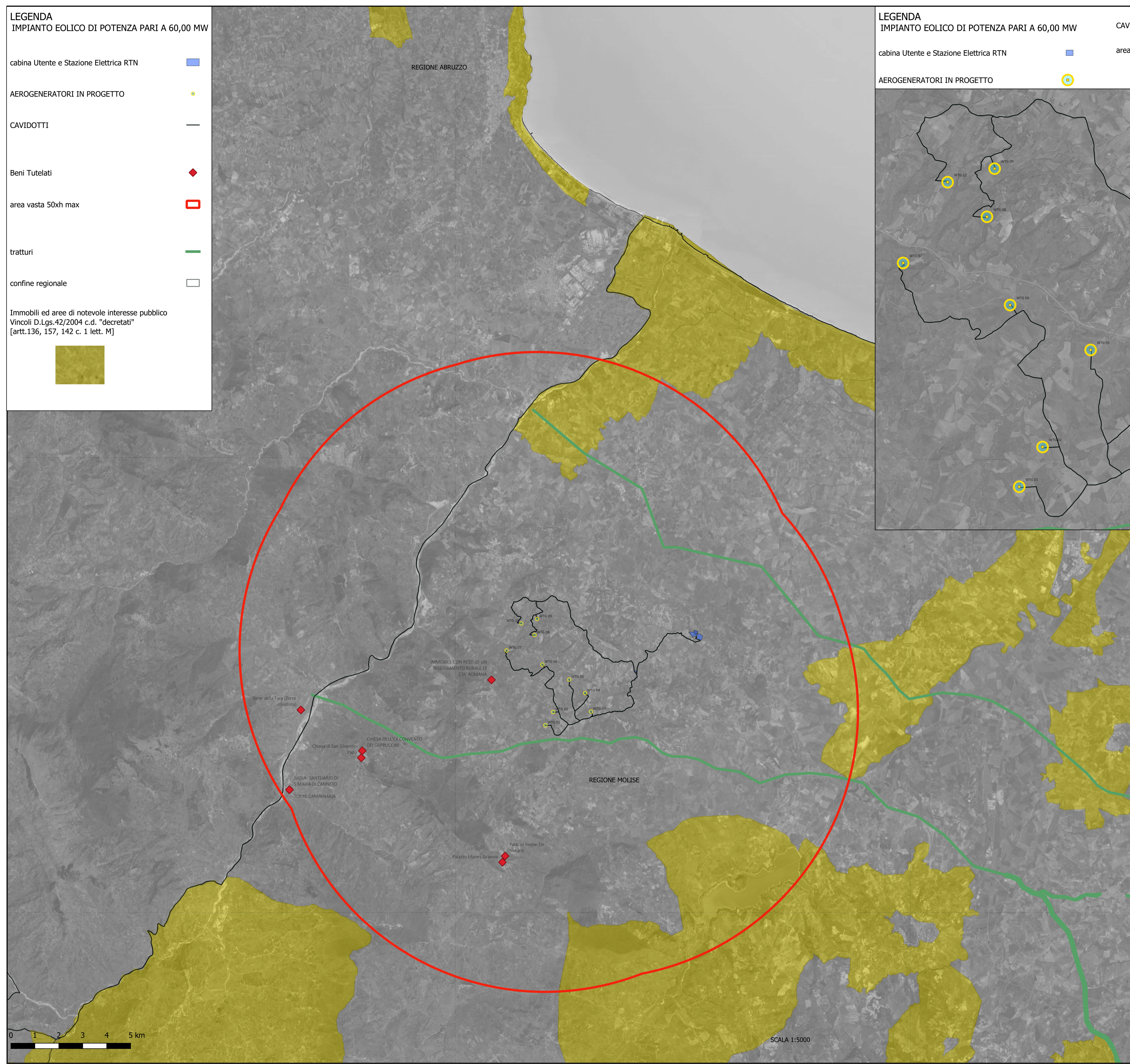
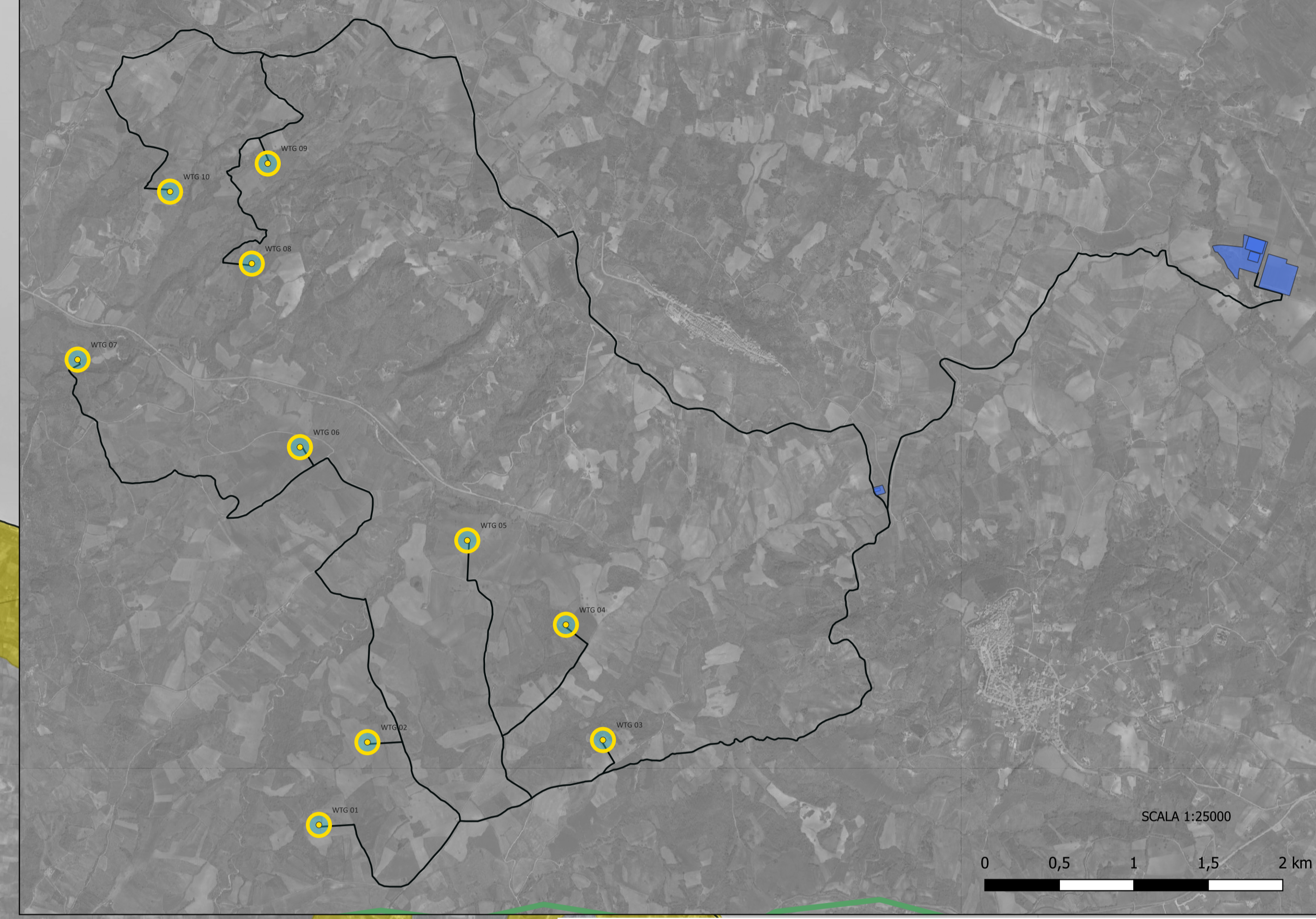
CAVIDOTTI 

area vasta 50xh max 

EOLICO Santa Croce di Magliano 

confine regionale 

tratturi ridotto 





REGIONE  
MOLISE

Provincia  
CAMPOBASSO



Comuni:



Acquaviva Collecroce



San Felice del Molise



Tavenna

---

**IMPIANTO EOLICO DI POTENZA PARI A 60,00 MW**

---

RICHIEDENTE

**V-RIDIUM WIND MOLISE 1 S.r.l.**  
 Viale Giorgio Ribotta, 21  
 00144 Roma (RM)  
 P. IVA: 16672771009 

---

**Titolo Elaborato:**  
 Inquadramento opere su Carta dei Vincoli paesaggistici - Vincoli ex artt. 136 e 157

---

<b>Codice Progetto:</b>	<b>Progettazione e sviluppo:</b>	
<b>ITW2AC</b>	<b>NRG PLUS ITALIA S.r.l.</b> Piazza Ettore Troilo, 27 65127 Pescara (PE) e-mail: mdedonno@nrgplus.global	<b>BELL FIX PLUS S.r.l.</b> Via Tancredi Normanno, 13 72023 Mesagne (BR) e-mail: elettrico@bellfixplus.it
<b>Codice</b>		
<b>Elaborato: T.18</b>	<b>Firma digitale:</b>	

---

**Progettista:**  
 Arch. Michele Roberto LAPENNA  
 ordine degli Architetti, P, P e C della provincia di Brindisi n° 281  
 corso Giuseppe Garibaldi, 6 72100 Brindisi  
 rr.architetti@libero.it  
 micheleroberto.lapenna@pec.it

---

**Scala 1:75.000 e 1:25.000 in A1**

Data	Revisione	DESCRIZIONE	Elaborazione	Verifica e controllo
15.05.2023	0	PRIMA EMISSIONE	Arch. Michele Roberto LAPENNA	Ing. Maurizio DE DONNO
<b>REVISIONI</b>				