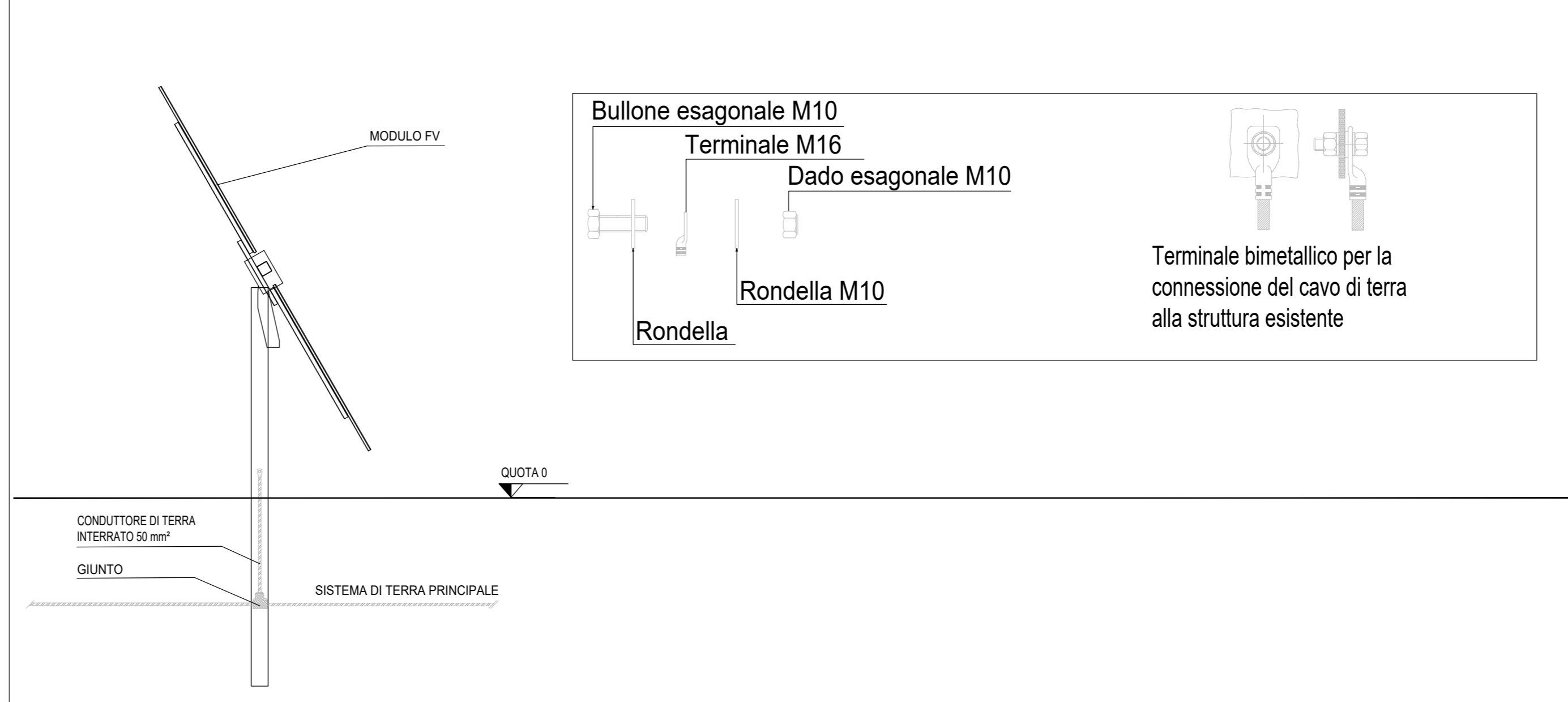
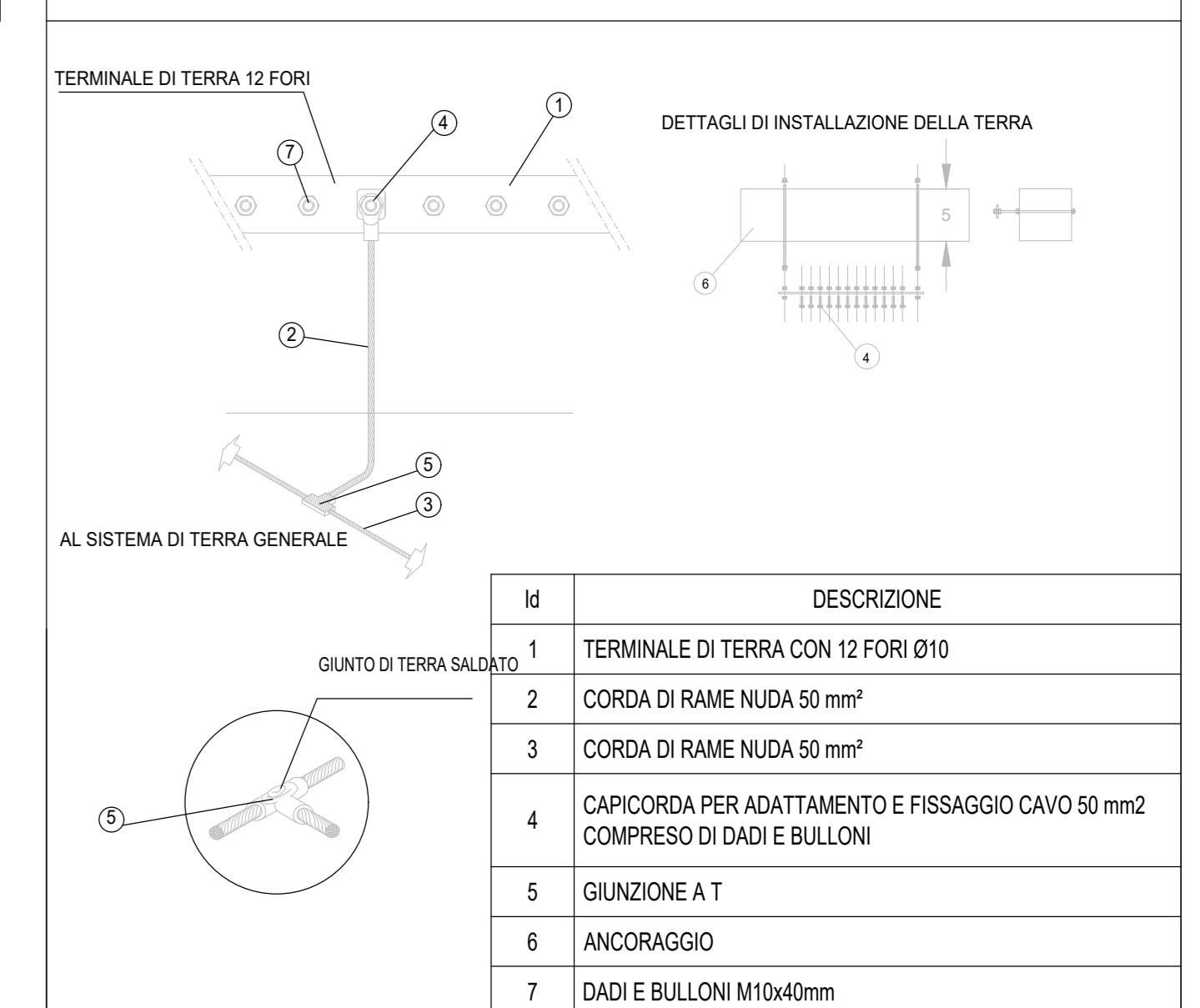


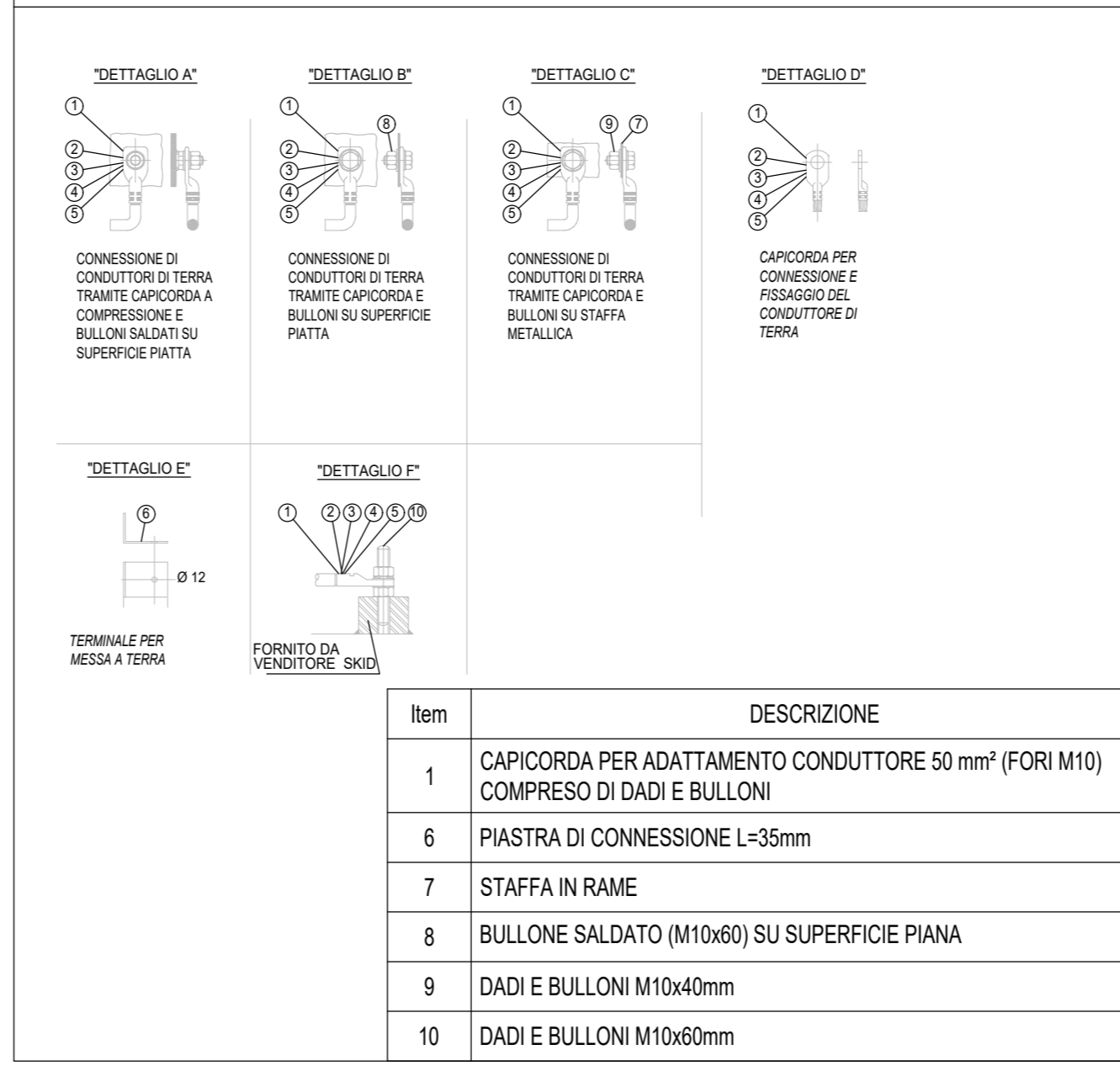
TIPICO DI INSTALLAZIONE STRUTTURE TRACKER



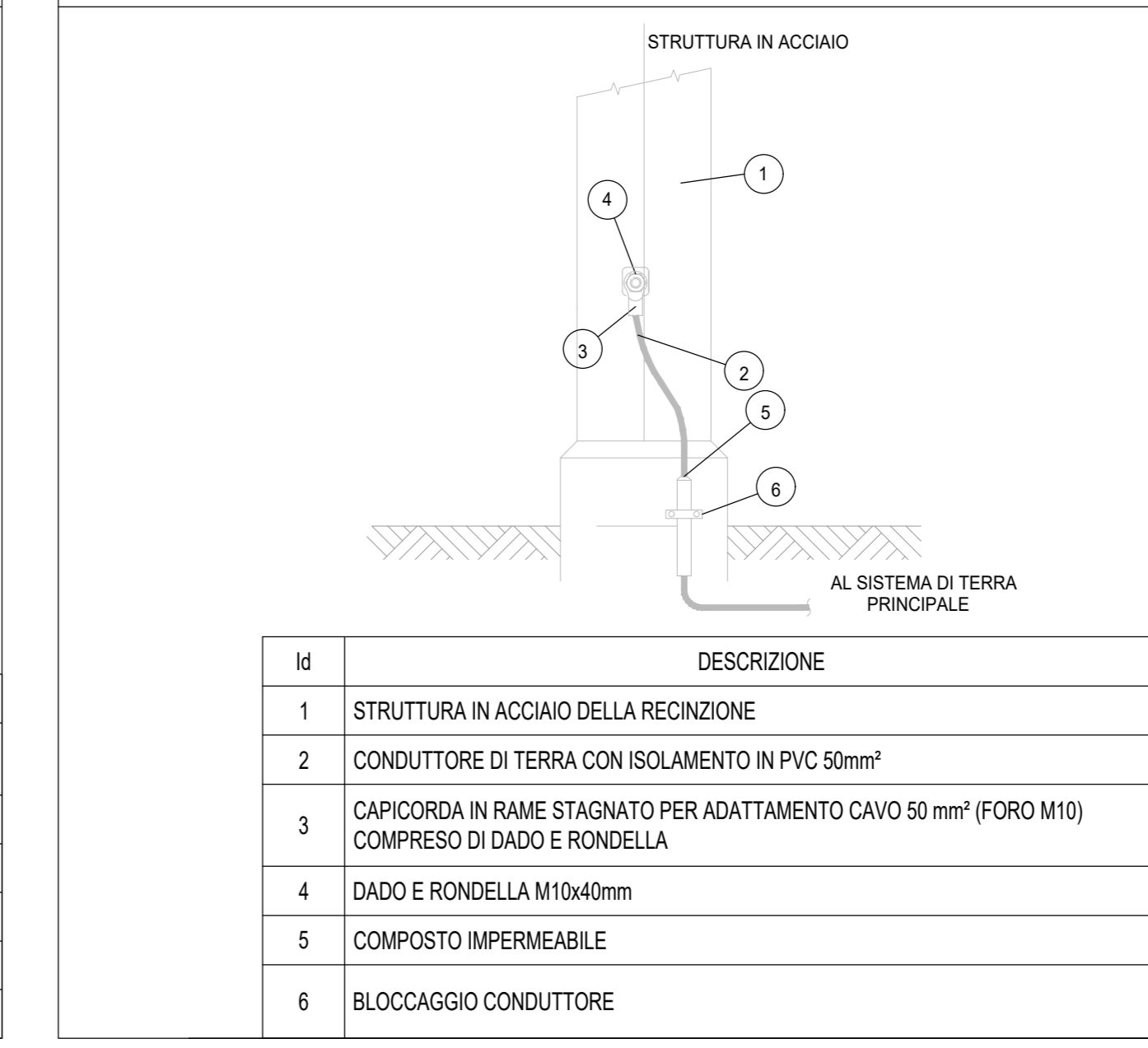
BARRA DI MESSA A TERRA SU STRUTTURA IN CALCESTRUZZO NON ISOLATA



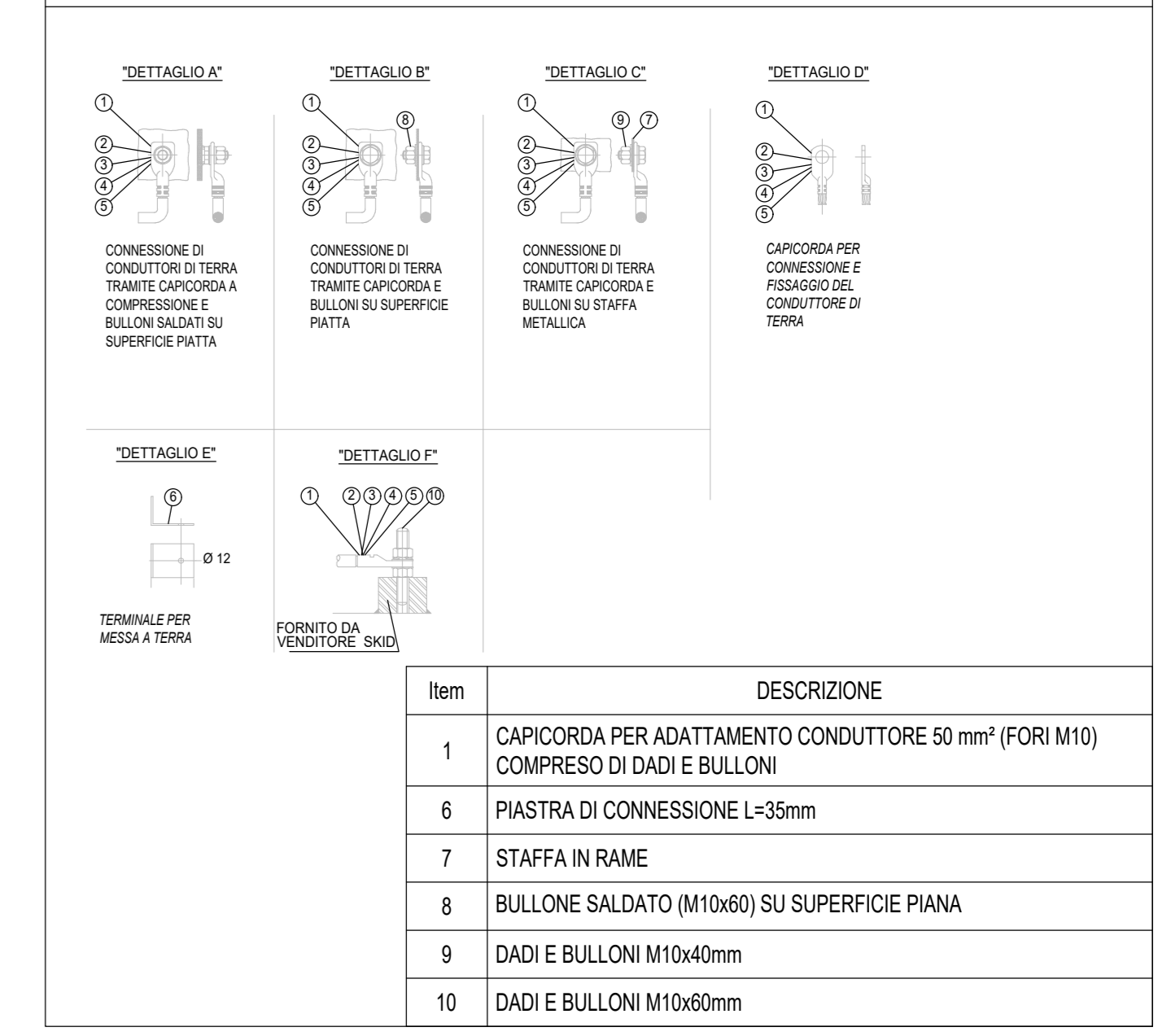
CONNESSIONE CONDUTTORI



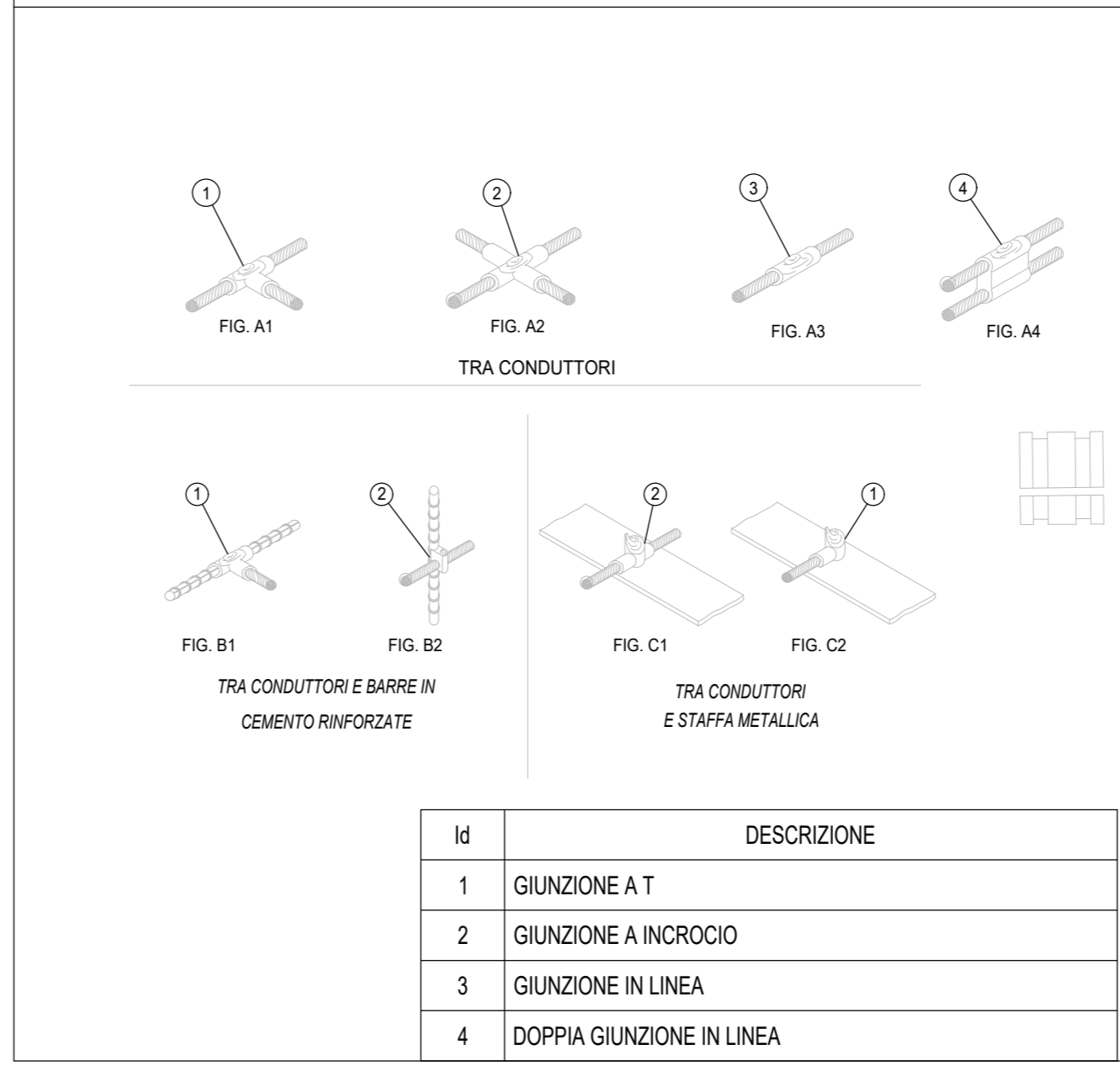
CONNESSIONE TIPICA AL SISTEMA DI TERRA DELLA RECINZIONE



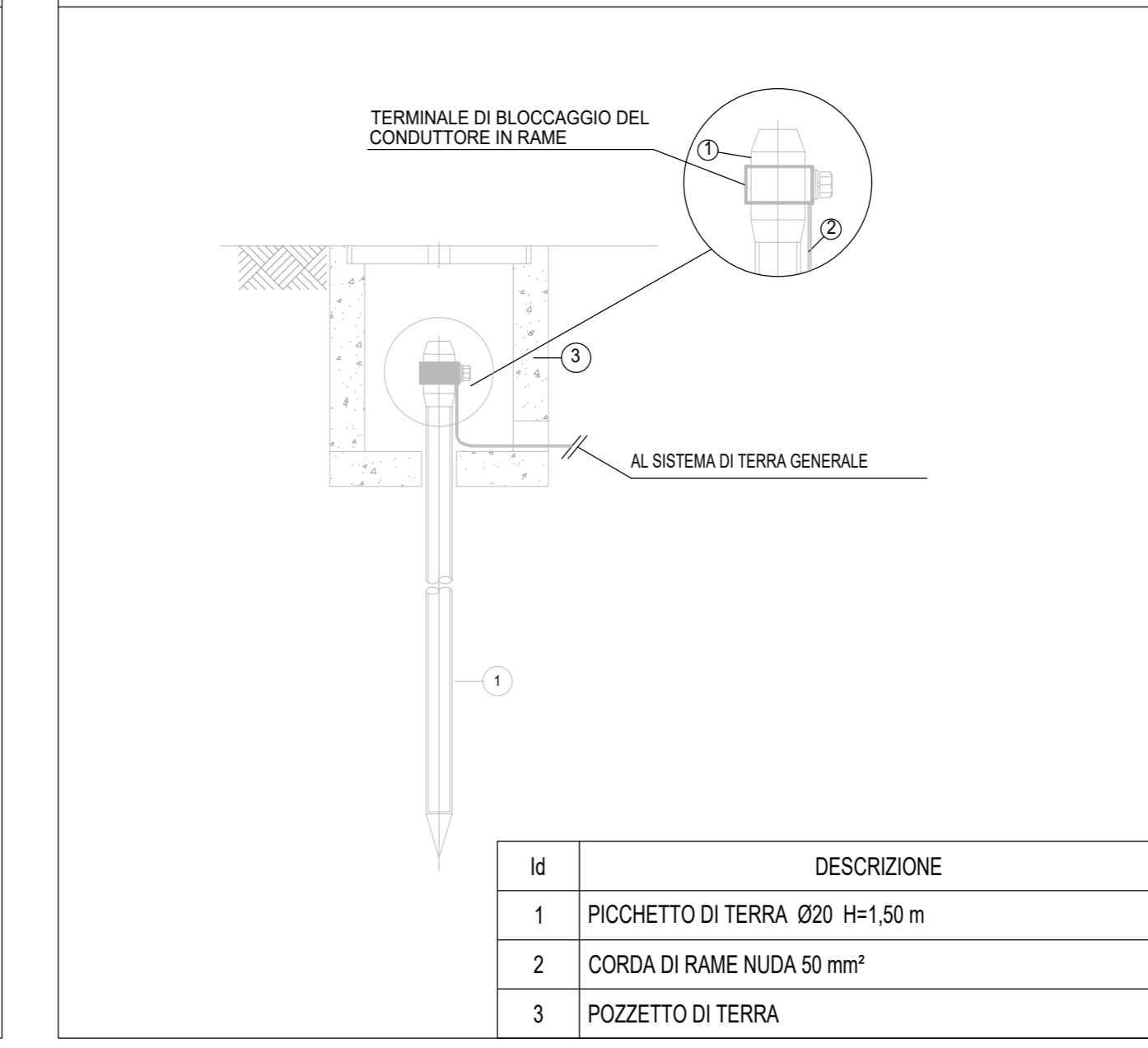
CONNESSIONE CONDUTTORI



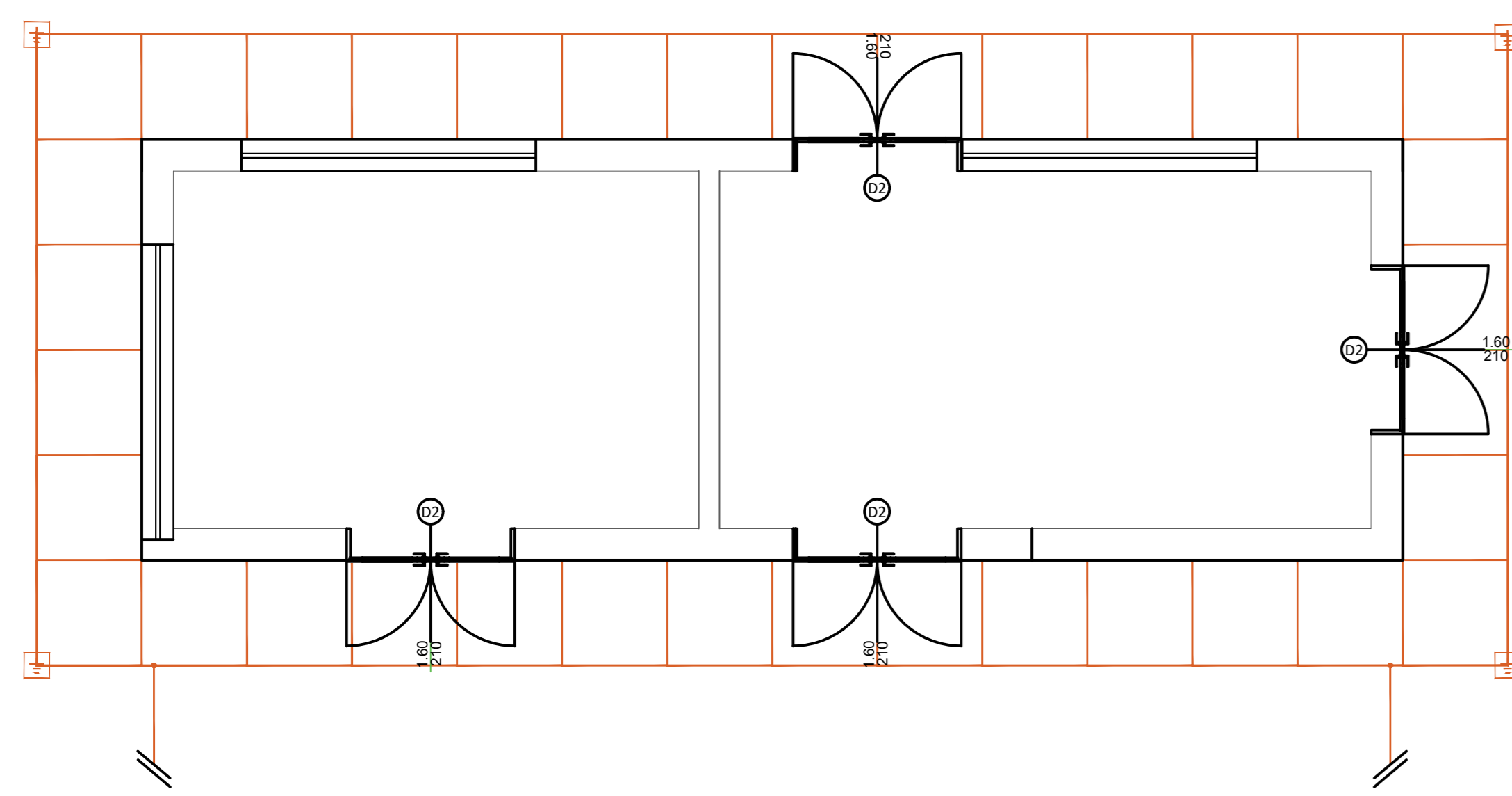
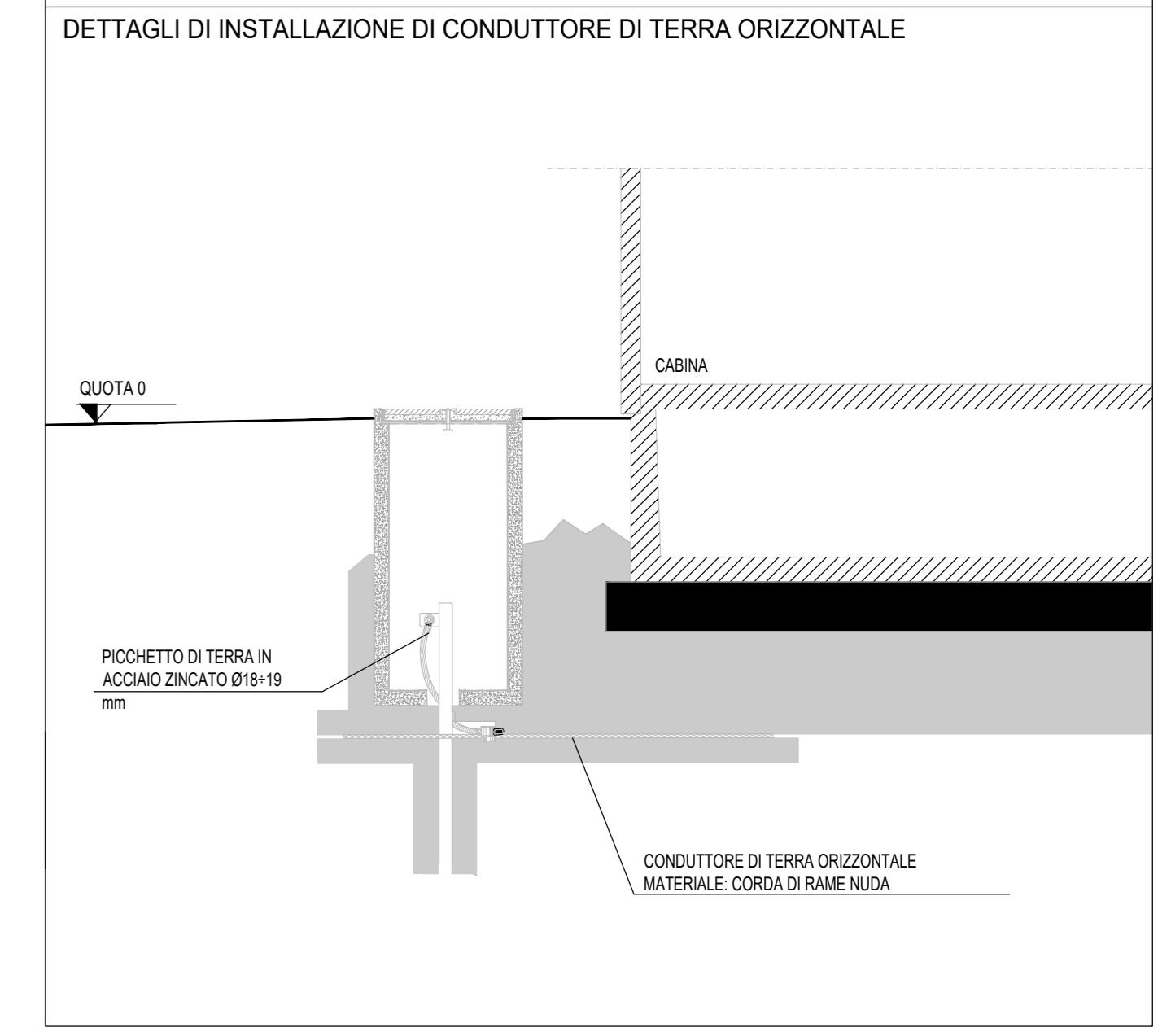
CONDUTTORI METALLICI SALDATI



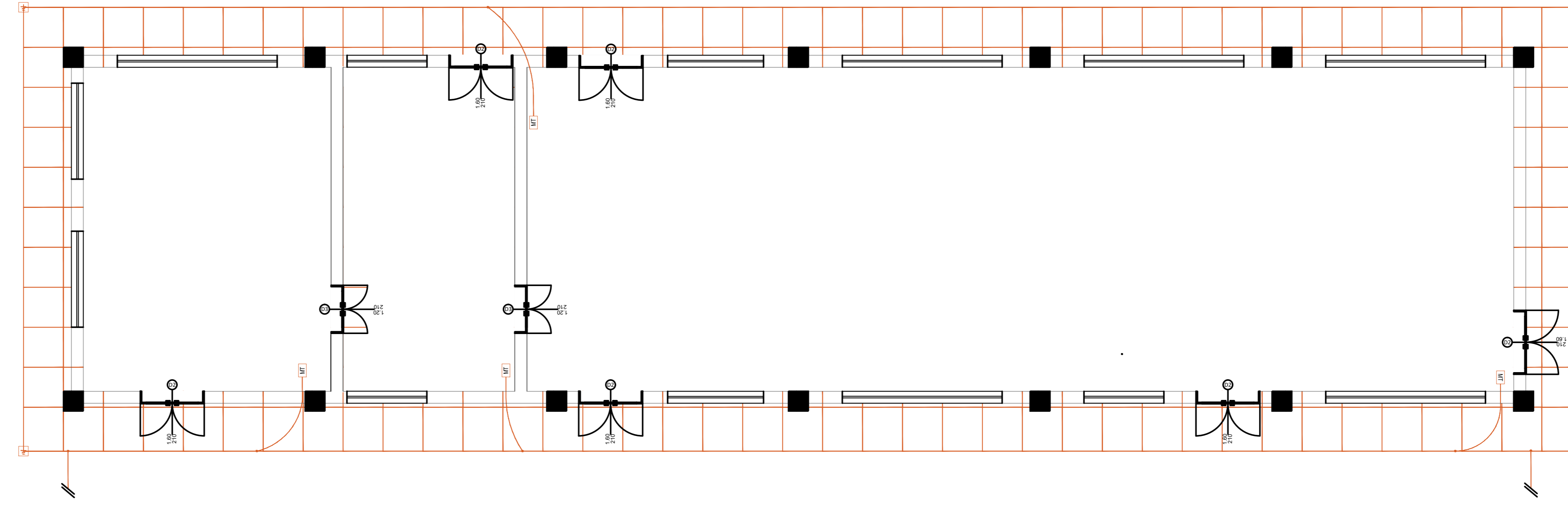
MESSA A TERRA TIPO CON POZZETTO IN CALCESTRUZZO



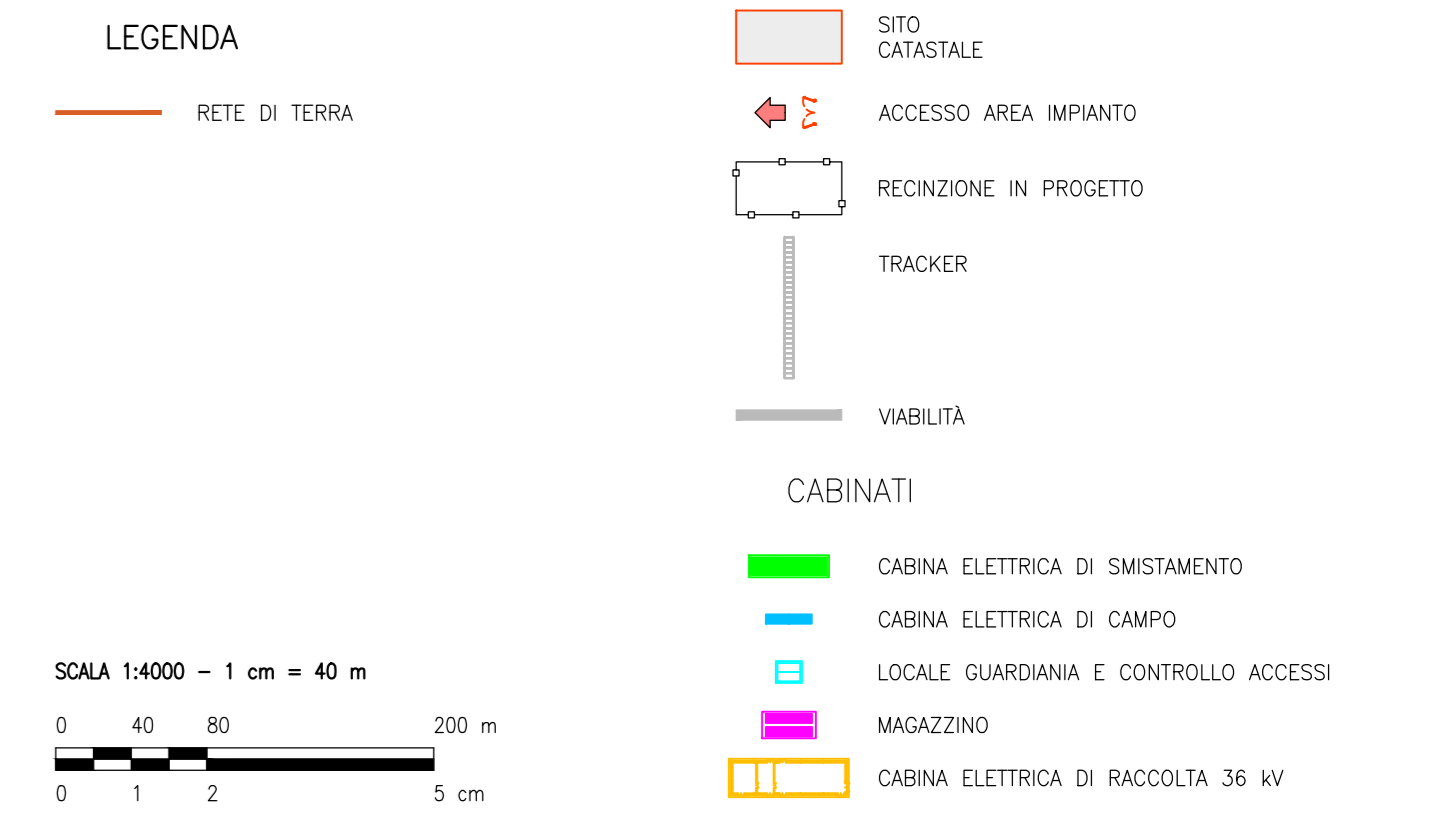
DETTAGLI DI INSTALLAZIONE TIPICI DELLA TERRA



TIPICO RETE DI TERRA - CABINA DI CAMPO
Scala 1:50



TIPICO RETE DI TERRA - CABINA DI SMISTAMENTO
Scala 1:75



Montana

FLYNIS PV 34 S.r.l.

ING. LAURA CONTI

IMPIANTO INTEGRATO - AGRIVOLTICO COLLEGATO ALLA RTN
POTENZA NOMINALE 44,56 MWp
COMUNE DI ACQUAVIVA DELLE FONTI (BA)
PROGETTO DEFINITIVO

RETE DI TERRA

14.2

2983_S284_ACD_VIA_T14_REV11_RETE DI TERRA