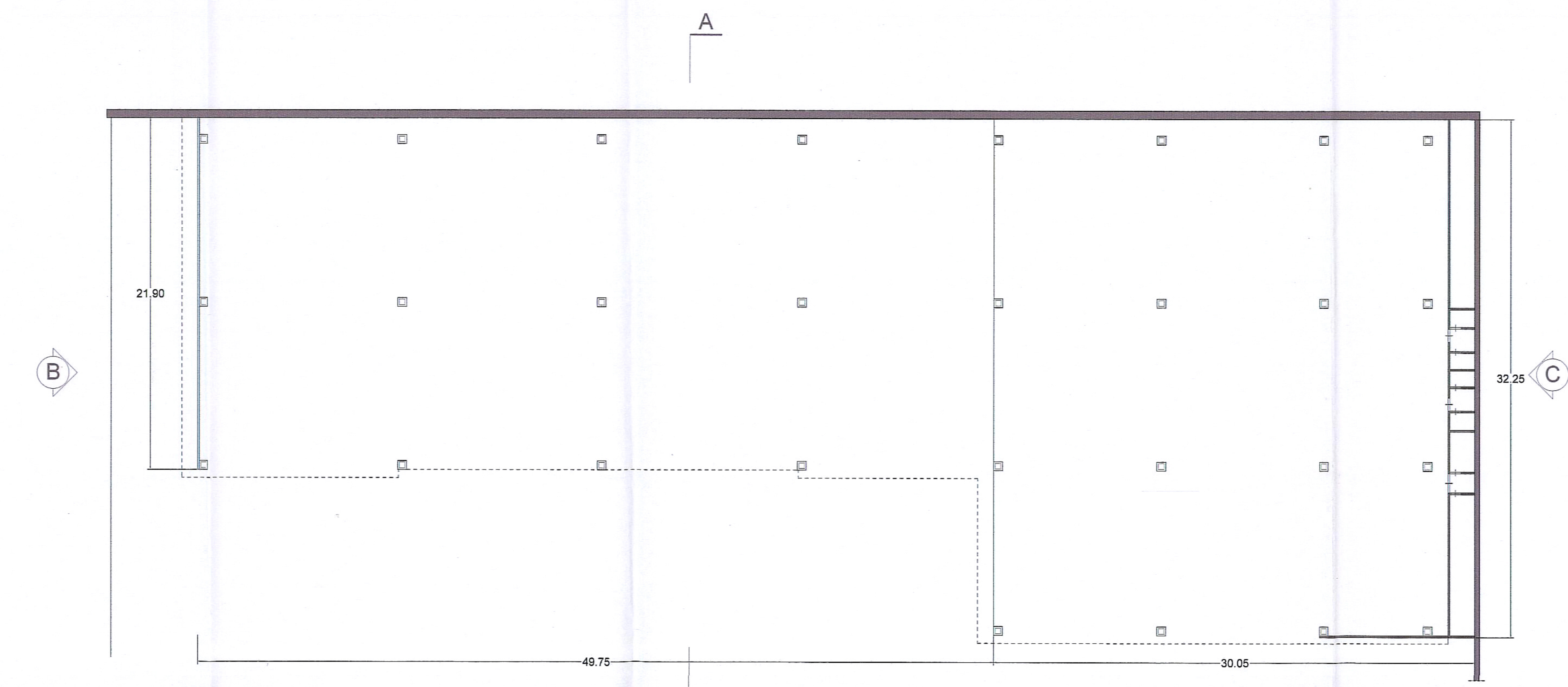
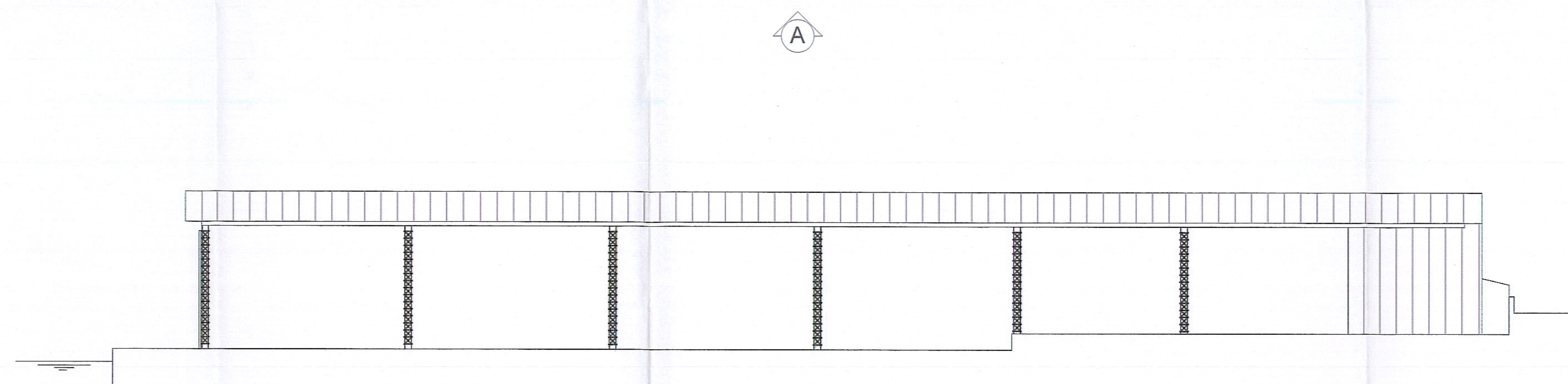


1_CAPANNONI METALLICI

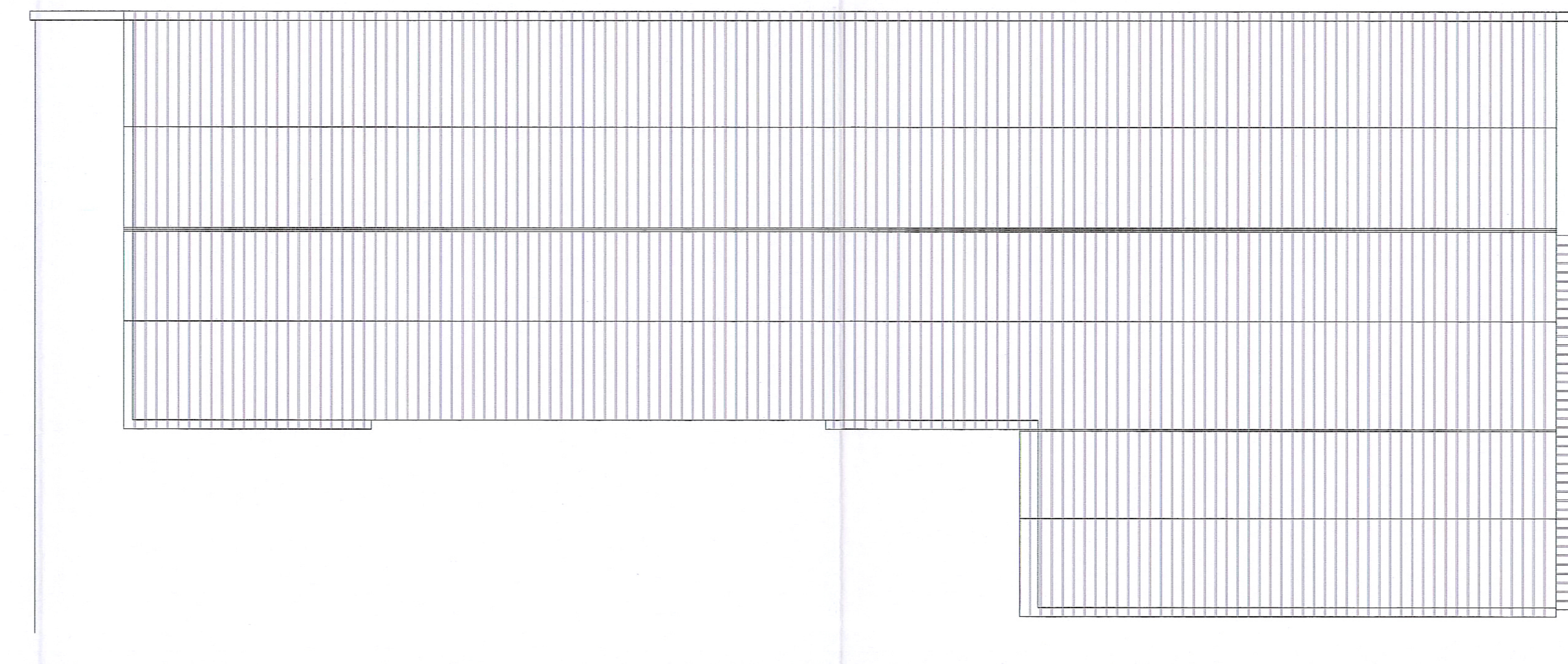
SCALA 1: 200



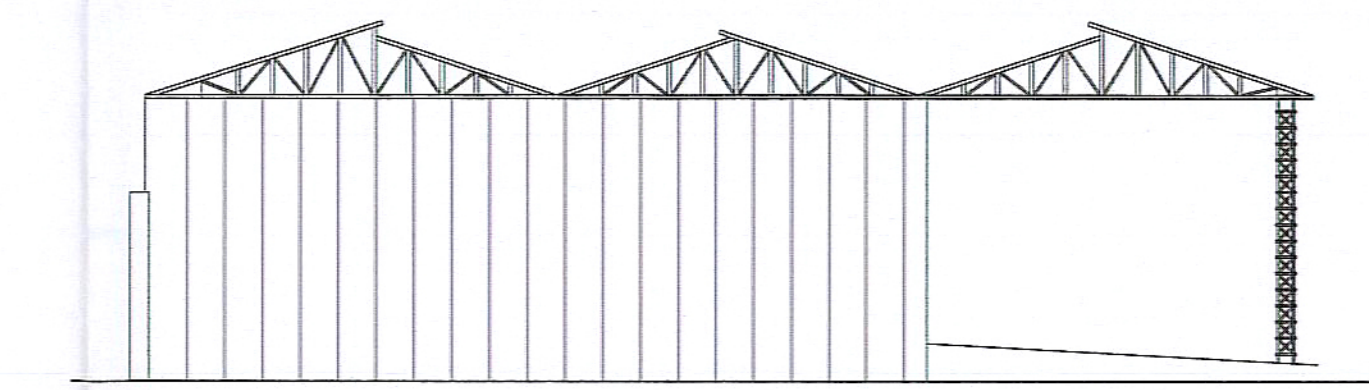
PIANTA



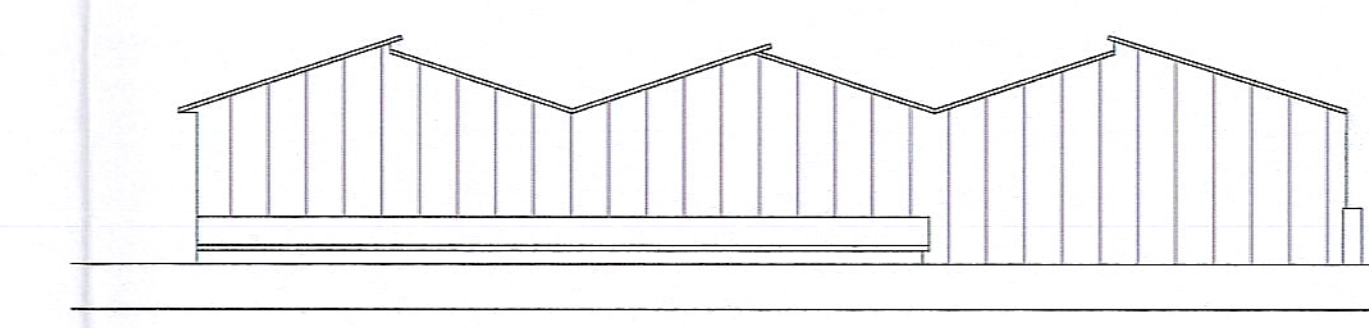
PROSPETTO A



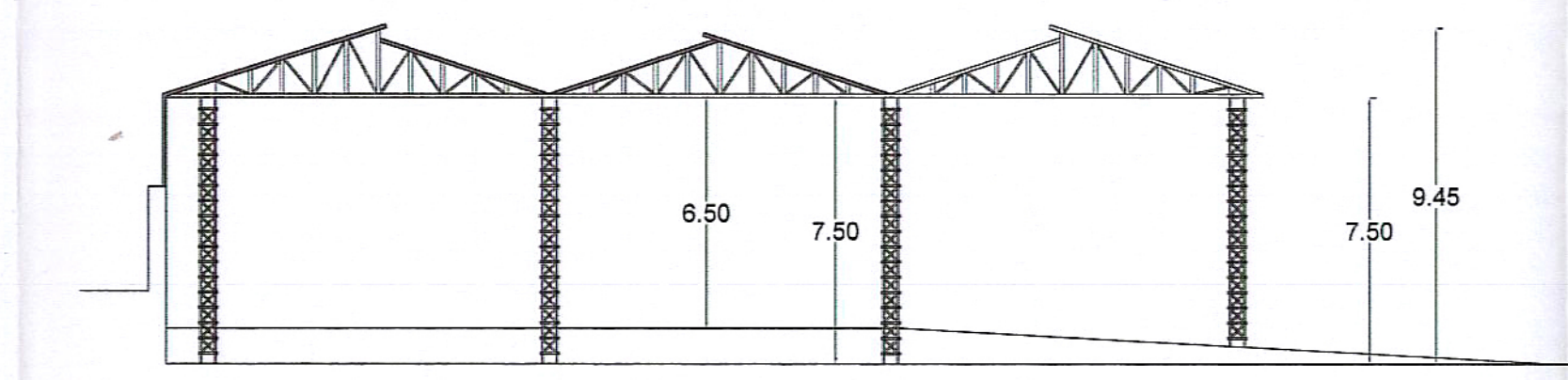
PIANTA COPERTURA



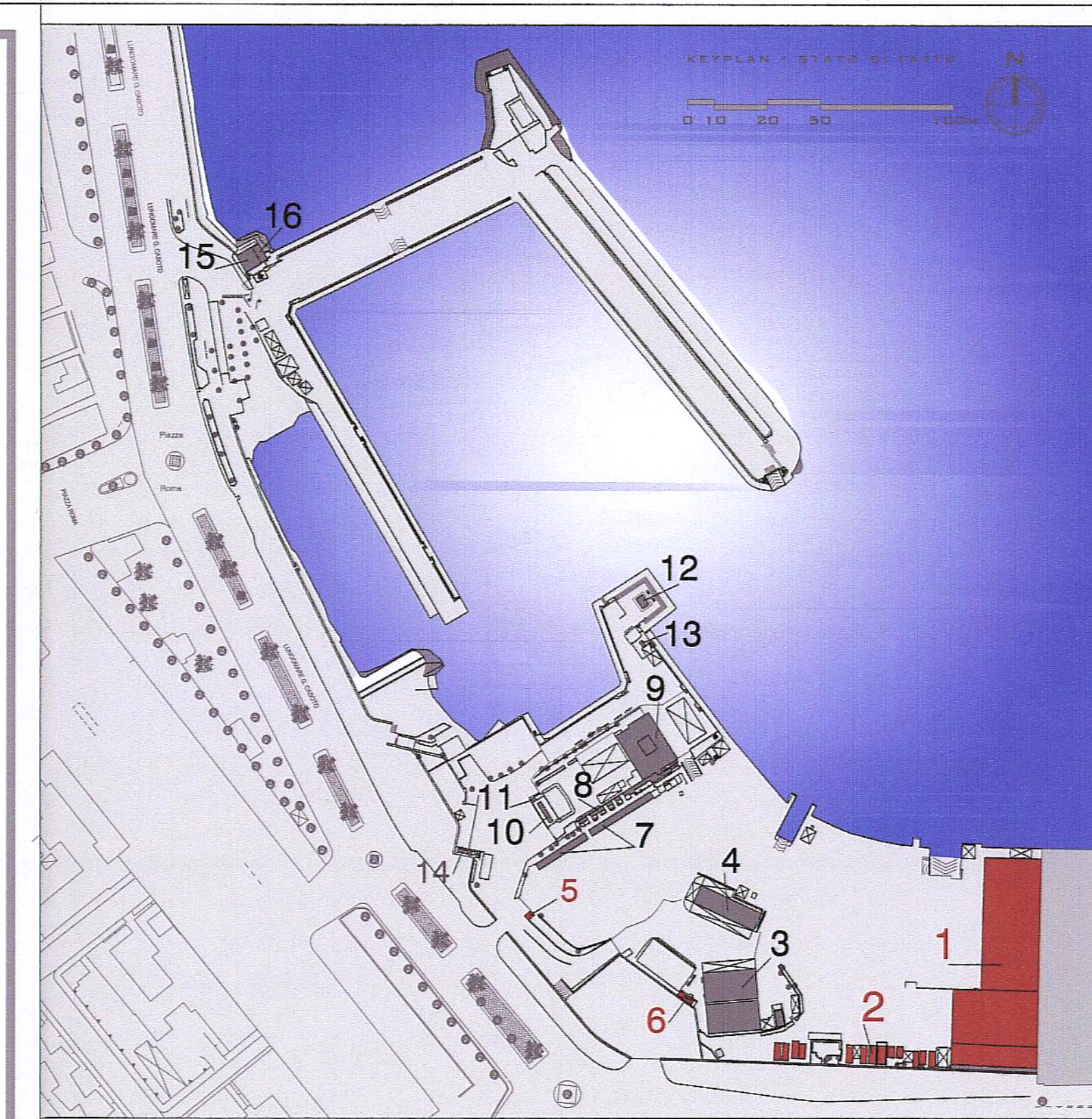
PROSPETTO B



PROSPETTO C



SEZIONE A - A



LEGENDA

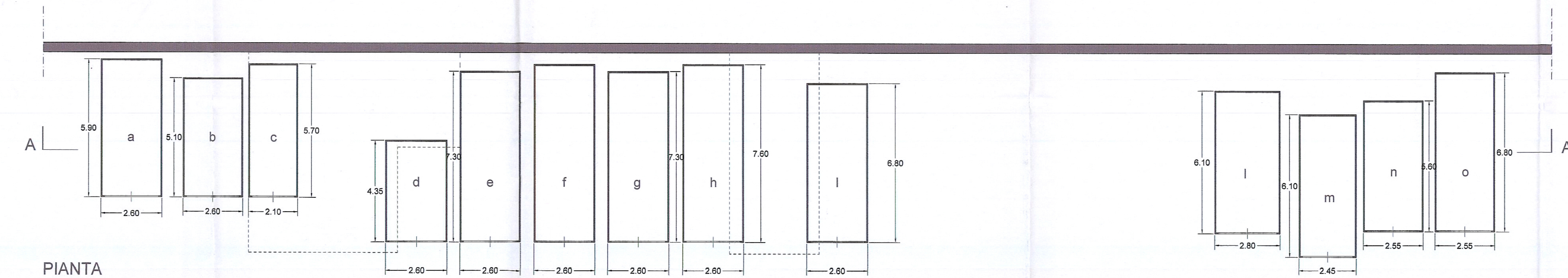
| codice | DESCRIZIONE |
|--------|----------------------------|
| 1 | CAPANNONI METALLICI |
| 2 | DEPOSITI ATTREZZATURE |
| 3 | PROVVEDITORIA NAUTICA |
| 4 | PALAZZINA UFFICI |
| 5 | GUARDIOLA |
| 6 | CABINA GRUPPO ELETTROGENO |
| 7 | DEPOSITI ATTREZZATURE |
| 8 | SERVIZI IGIENICI |
| 9 | PALAZZINA SERVIZI GENERALI |
| 10 | CAMERINI |
| 11 | BIGLIETTERIA |
| 12 | BUNKERAGGIO 1 |
| 13 | BUNKERAGGIO 2 |
| 14 | DISTRIBUTORE CARBURANTE |
| 15 | SERVIZI IGIENICI |
| 16 | CABINA ENEL |

TABELLA DEI VOLUMI ESISTENTI

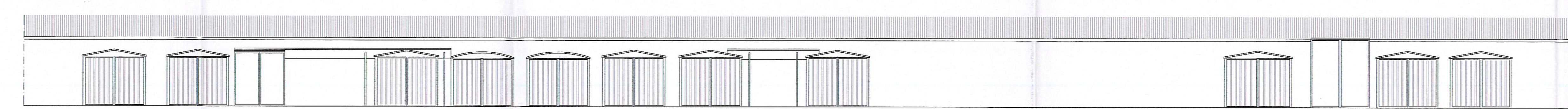
| n° | EDIFICIO | SUPERFICIE | ALTEZZA MEDIA | VOLUME | DESTINAZIONE D'USO |
|----|--------------------------------|------------|---------------|----------|--------------------|
| 1 | capannoni metallici | 591,22 | 5,87 | 3.475,08 | uffici |
| 2 | depositi attrezzature | 471,70 | 4,38 | 2.066,04 | depositi |
| 3 | provveditoria nautica | 432,90 | 4,38 | 1.886,04 | commerciale |
| 4 | palazzina uffici | 178,56 | 3,21 | 573,19 | uffici |
| 5 | guardiola | 6,45 | 2,65 | 17,09 | servizi portuali |
| 6 | cabina gruppo elettrogeno | 15,69 | 2,39 | 37,26 | locali tecnici |
| 7 | depositi attrezzature | 117,80 | 2,28 | 268,00 | depositi |
| 8 | servizi igienici | 21,44 | 2,70 | 57,89 | servizi |
| 9 | palazzina servizi generali | | | | |
| | P.T. | 193,60 | | | |
| | P.1* | 30,74 | | | |
| | TOT | 214,34 | 3,35 | 717,40 | commerciale |
| 10 | camerini | 12,67 | 2,70 | 34,21 | servizi |
| 11 | biglietteria | 3,22 | 2,70 | 8,69 | servizi |
| 12 | bunkeraggio 1 | 12,90 | 2,40 | 30,96 | servizi portuali |
| 13 | bunkeraggio 2 | 3,25 | 2,65 | 8,61 | servizi portuali |
| 14 | cabina distributore carburante | 4,81 | 2,60 | 12,51 | servizi portuali |
| 15 | servizi igienici | 46,80 | 2,40 | 112,32 | servizi |
| 16 | cabina enel | 15,15 | 3,55 | 54,43 | locali tecnici |
| | Istituto nautico | 201,36 | 3,55 | 714,83 | Opera a scomputo |
| | TOTALE | | | 8490,20 | |

2_DEPOSITI ATTREZZATURE

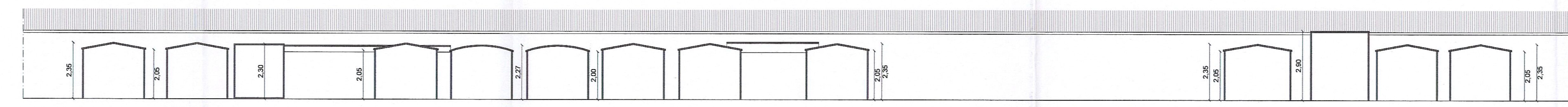
SCALA 1: 100



PIANTA



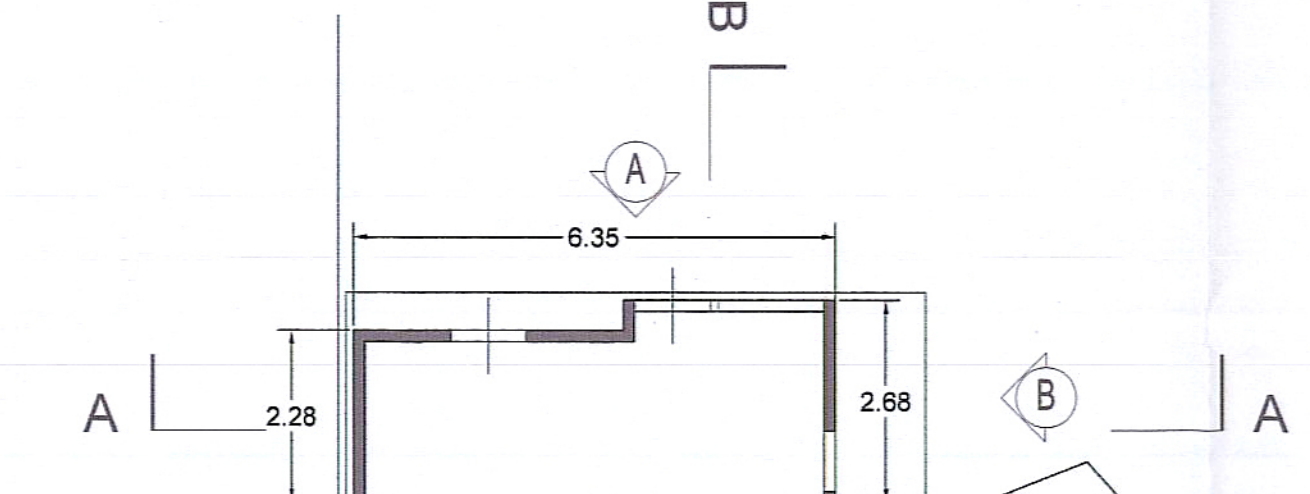
PROSPETTO FRONTALE



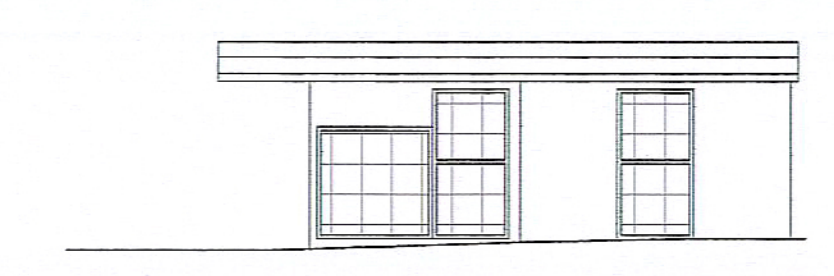
SEZIONE A - A

6_CABINA GRUPPO ELETTROGENO

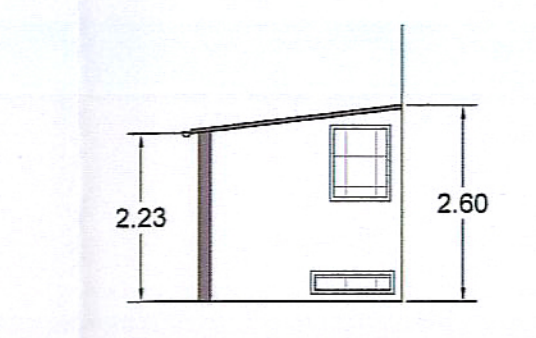
SCALA 1: 100



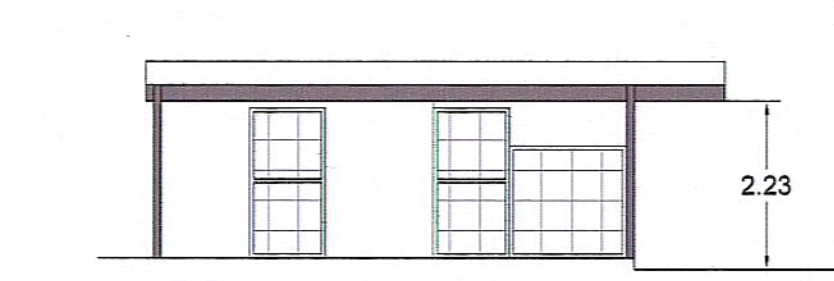
PIANTA



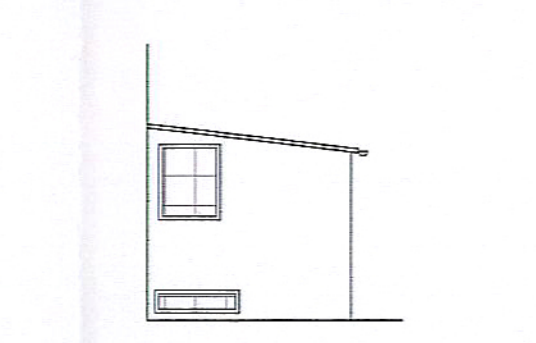
PROSPETTO A



SEZIONE B - B



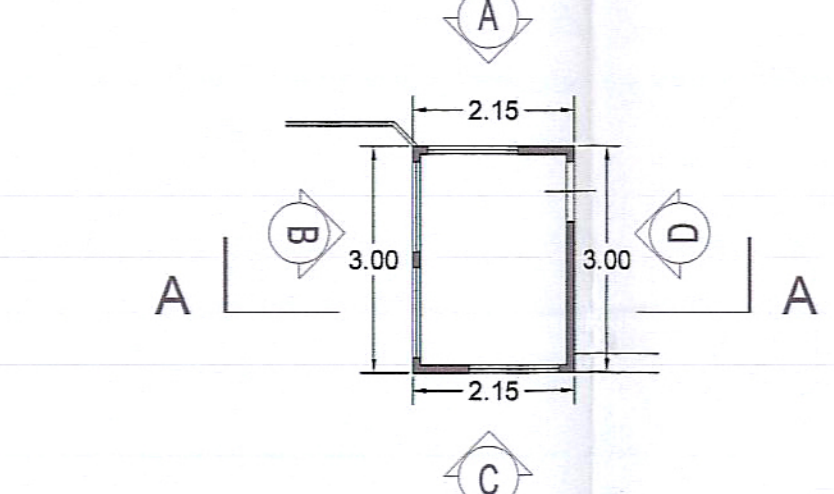
SEZIONE A - A



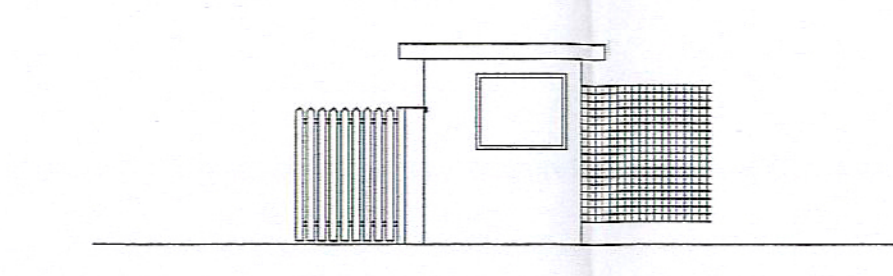
PROSPETTO B

5_GUARDIOLA

SCALA 1: 100



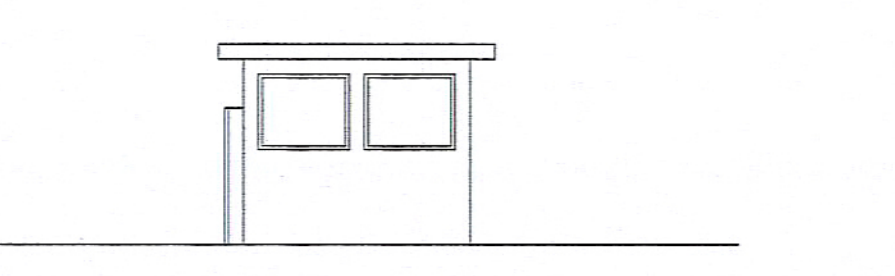
PIANTA



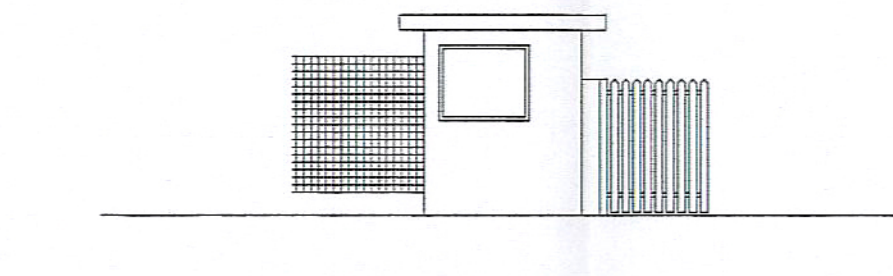
PROSPETTO A



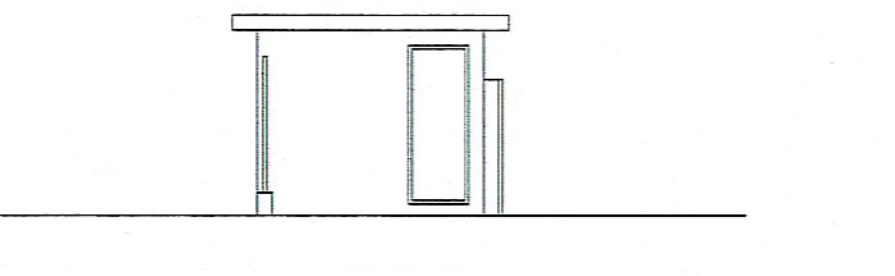
SEZIONE A - A



PROSPETTO B



PROSPETTO C



PROSPETTO D

REGIONE LAZIO
COMUNE DI GAETA

5 MAR 2014
PROT. 9536

PROGETTO DI AMPLIAMENTO,
RIQUALIFICAZIONE AMBIENTALE
ED ADEGUAMENTO TECNOLOGICO
DEL PORTO TURISTICO

"BASE NAUTICA FLAVIO GIOIA"

PROGETTO DEFINITIVO
PARTE GENERALE
STATO DI FATTO

Titolo:

Edifici esistenti - Pianta, Prospetti e Sezioni

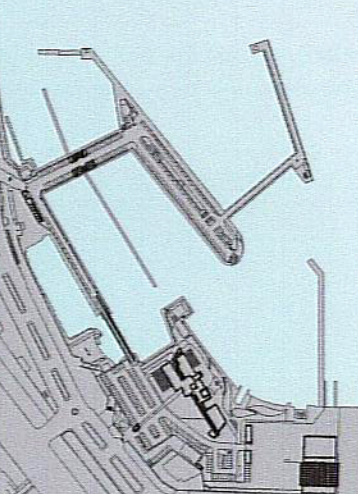
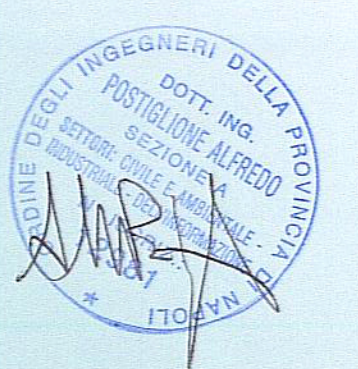
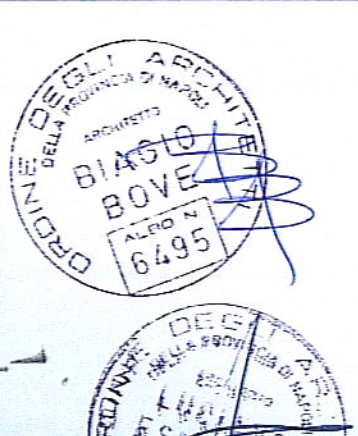
Revisione Data Firma

Comittente: BASE NAUTICA FLAVIO GIOIA S.P.A.
Project Manager: ARCH. NICOLA CINQUE

Progettisti: Domicomente S.P.A. STIGE

Struttura - opere a terra: ING. ROBERTO CASTELLUCCIO
Struttura - opere a mare: ING. NICOLA MANCINI, ING. VINCENZA VIRELLI

Impianti: ING. ANTONIO NAPOLITANO
Geologia e Geotecnica: GIOI. ANNAMARIA PERILLO, ING. PIERO DI STEFANO



Scala: 1:100 1:200

A.07.1