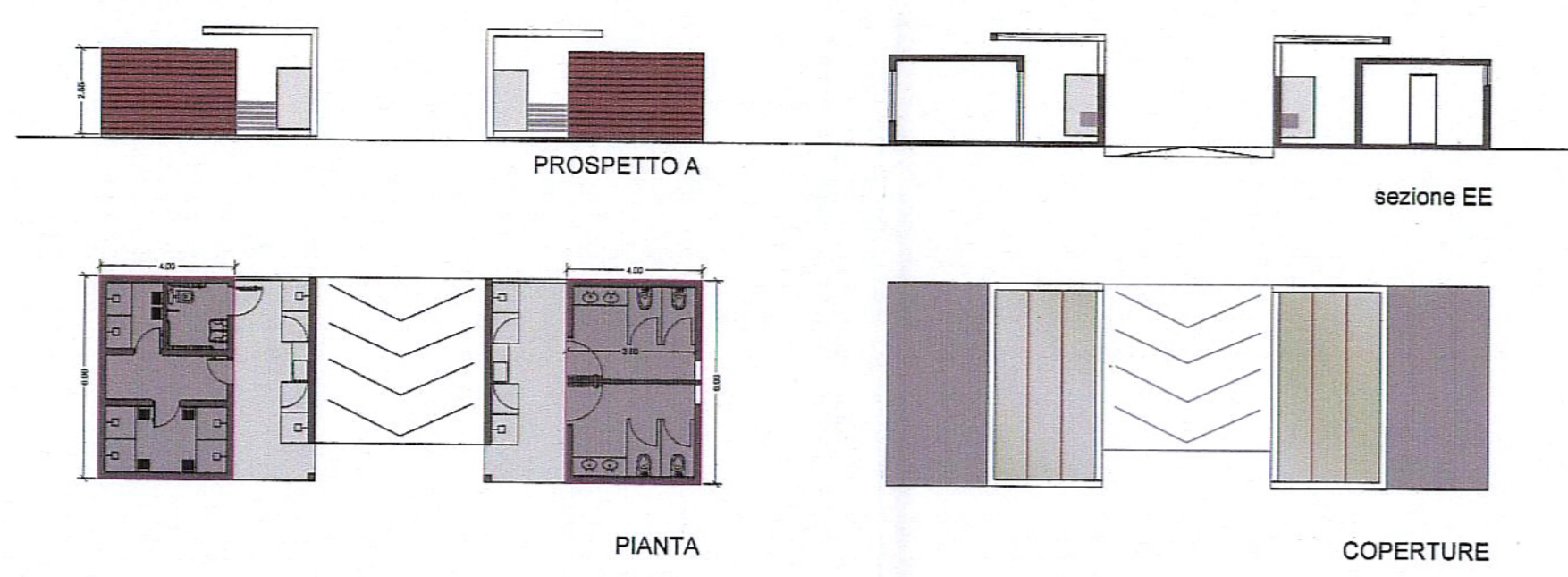
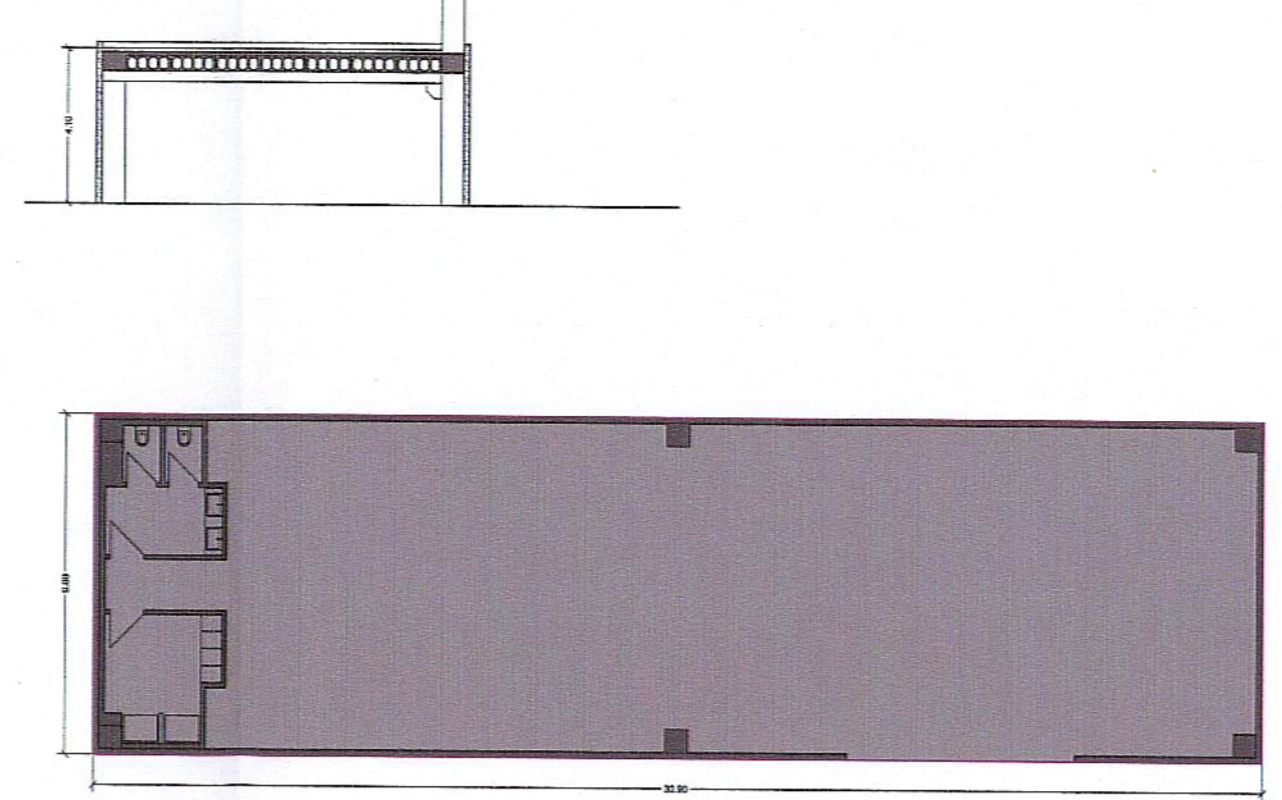


edificio YC/PN

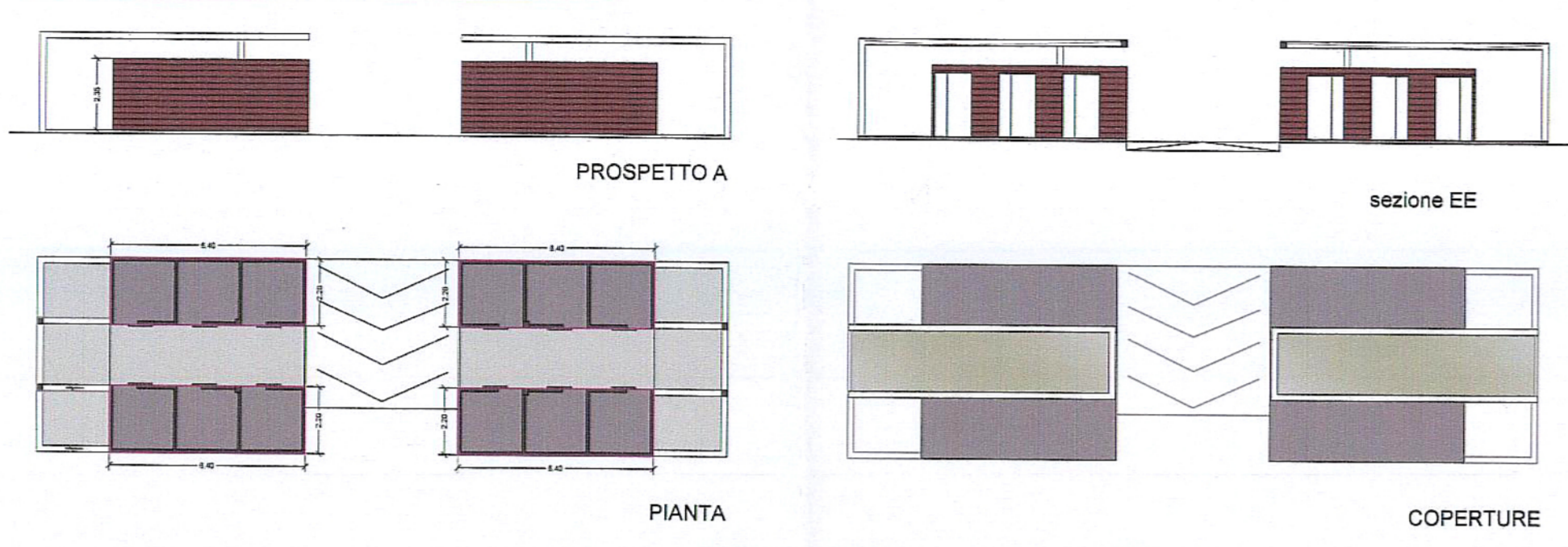
edifici Sl1 Sl2



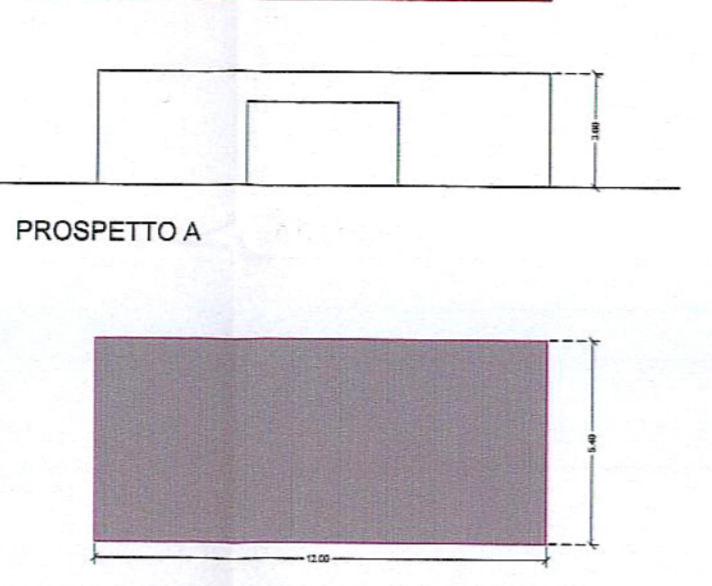
edificio LAB1



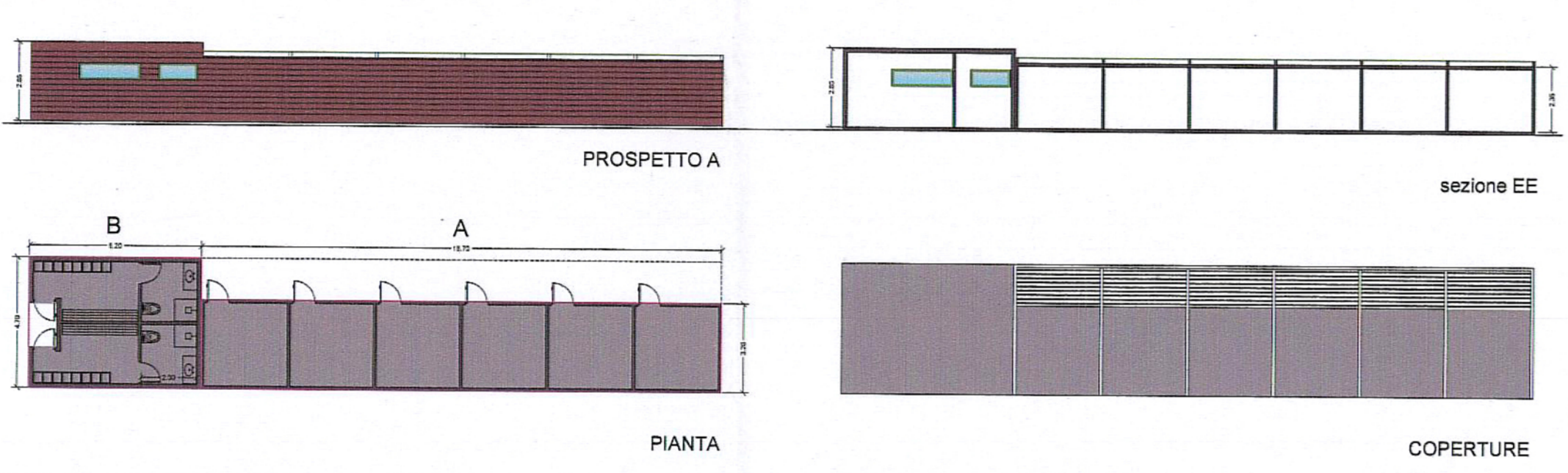
edifici DP1 DP2 DP3



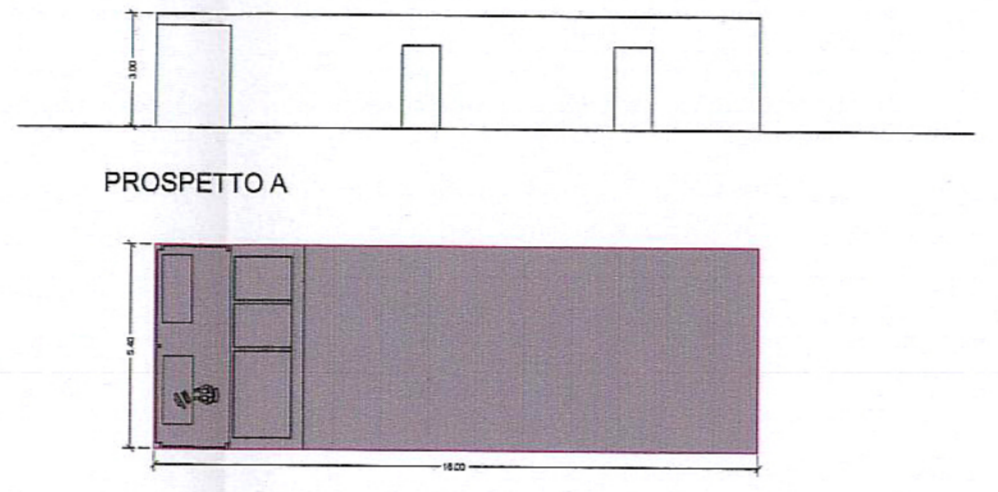
edificio LAB2



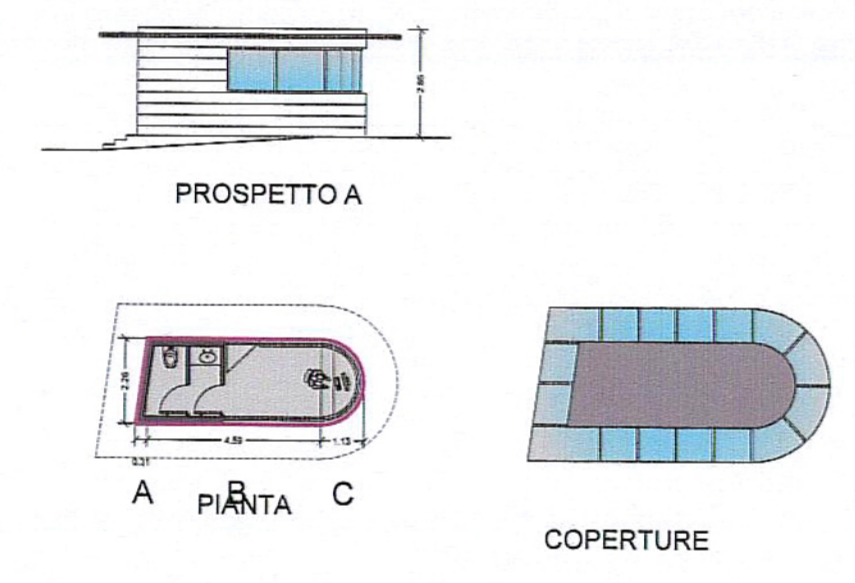
edificio DP4/Sl4



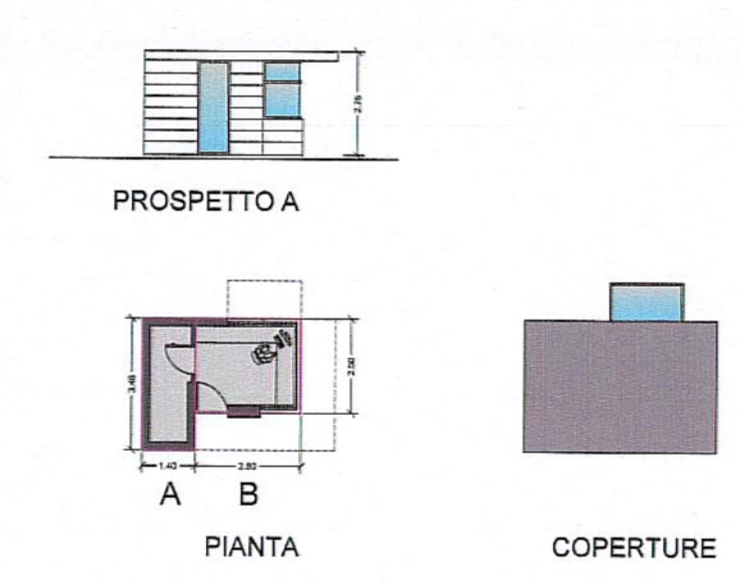
edificio DP5/UC



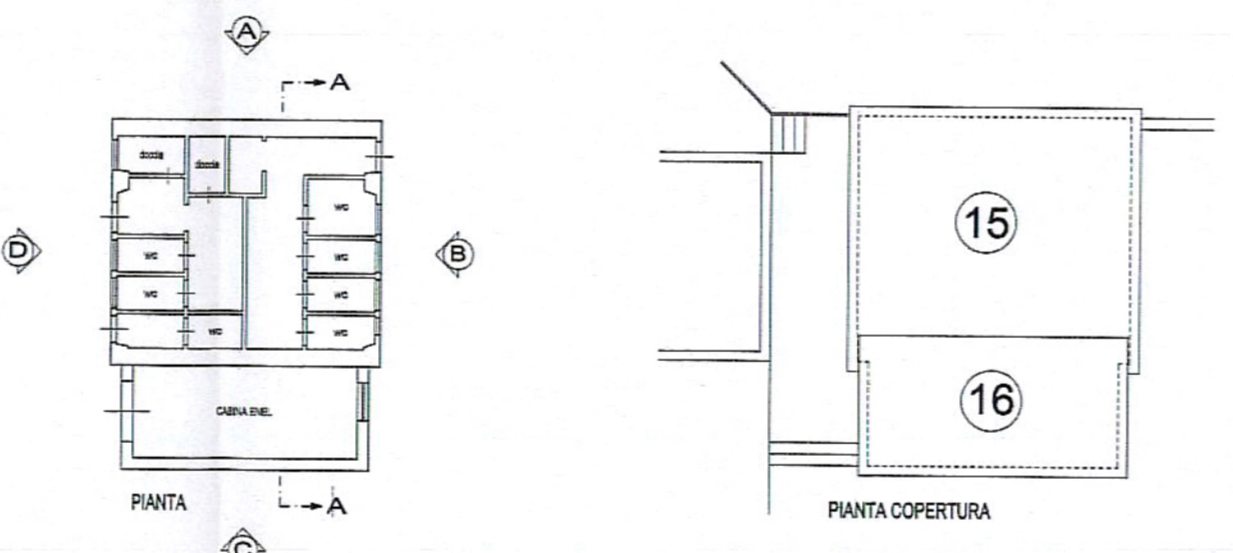
edificio GU1



edificio GU2

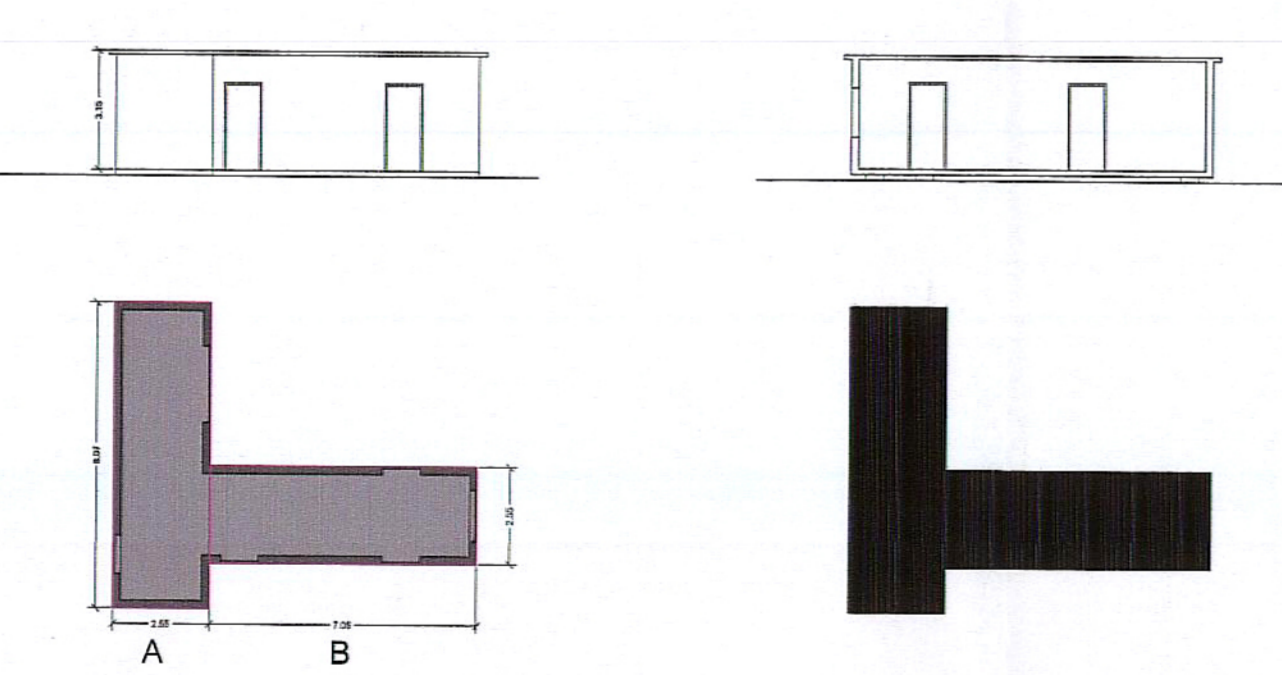


edificio Sl3/EL3 esistente

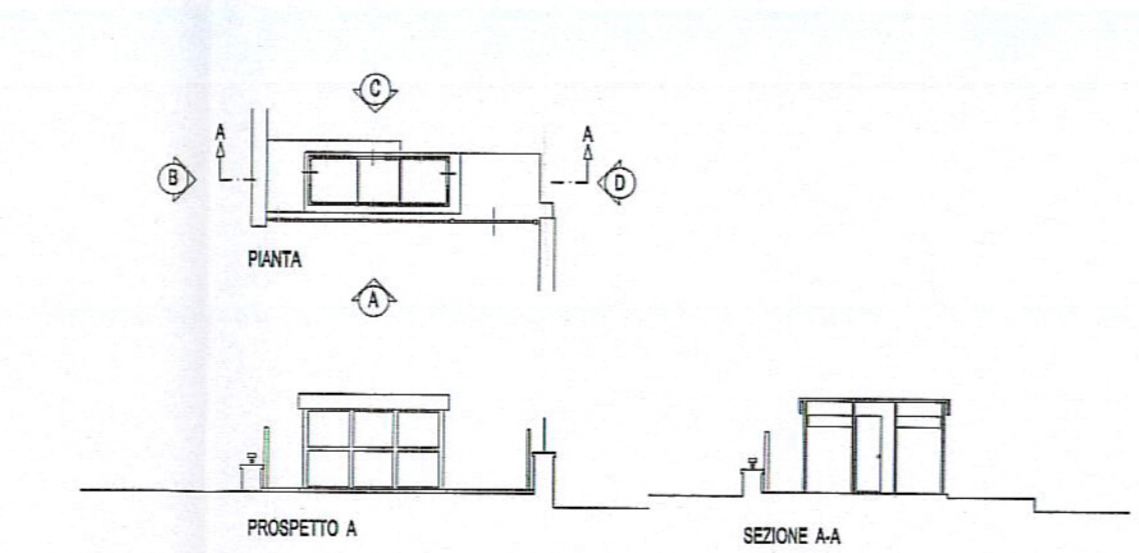


- 15 SERVIZI IGIENICI
- 16 CABINA ENEL

edificio BYC

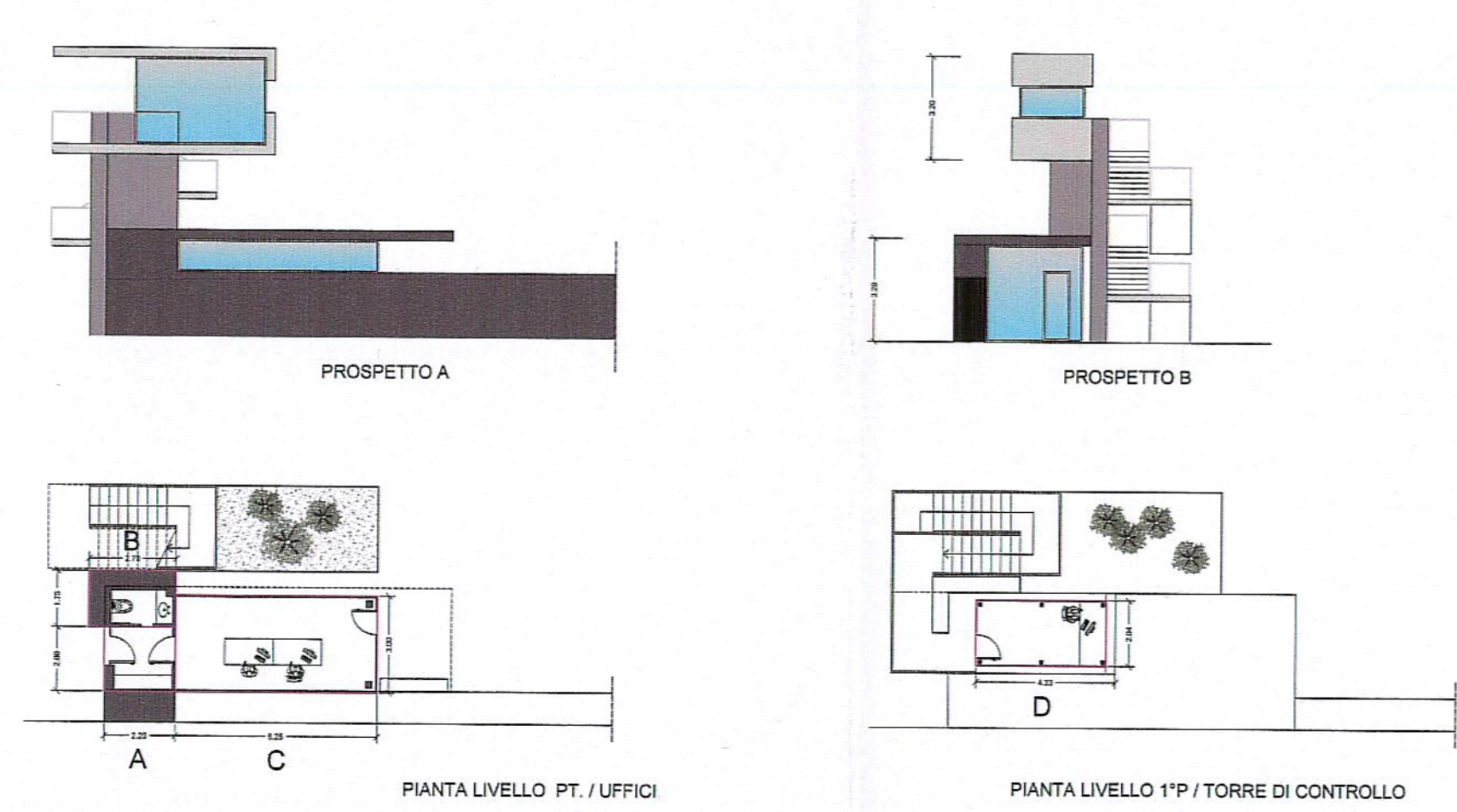


edificio DB1 esistente

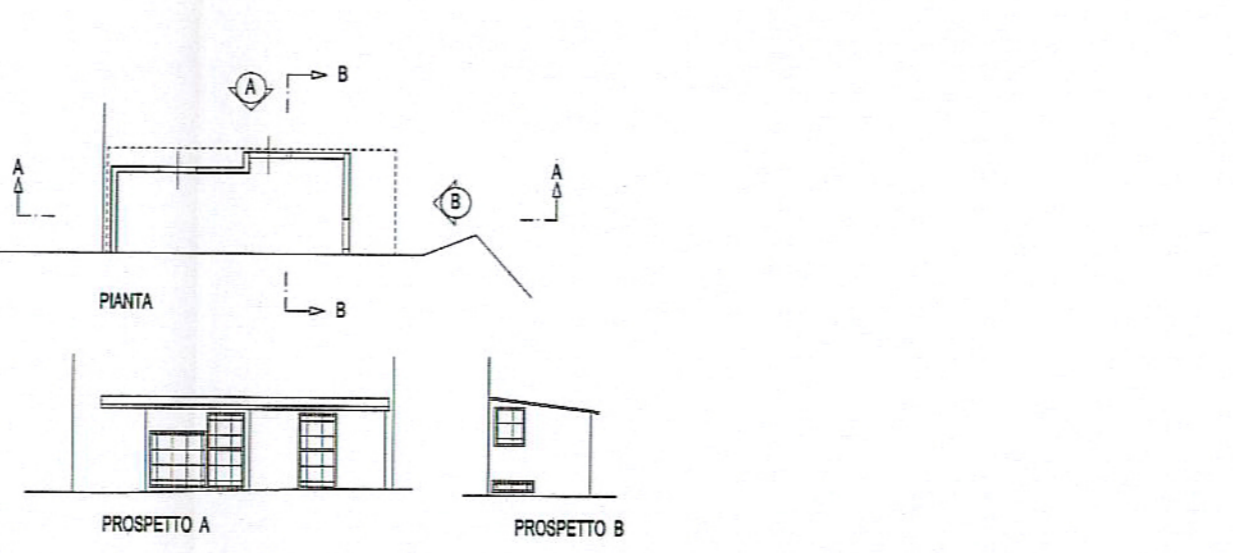


- 14 CABINA DISTRIBUTORE CARBURANTI

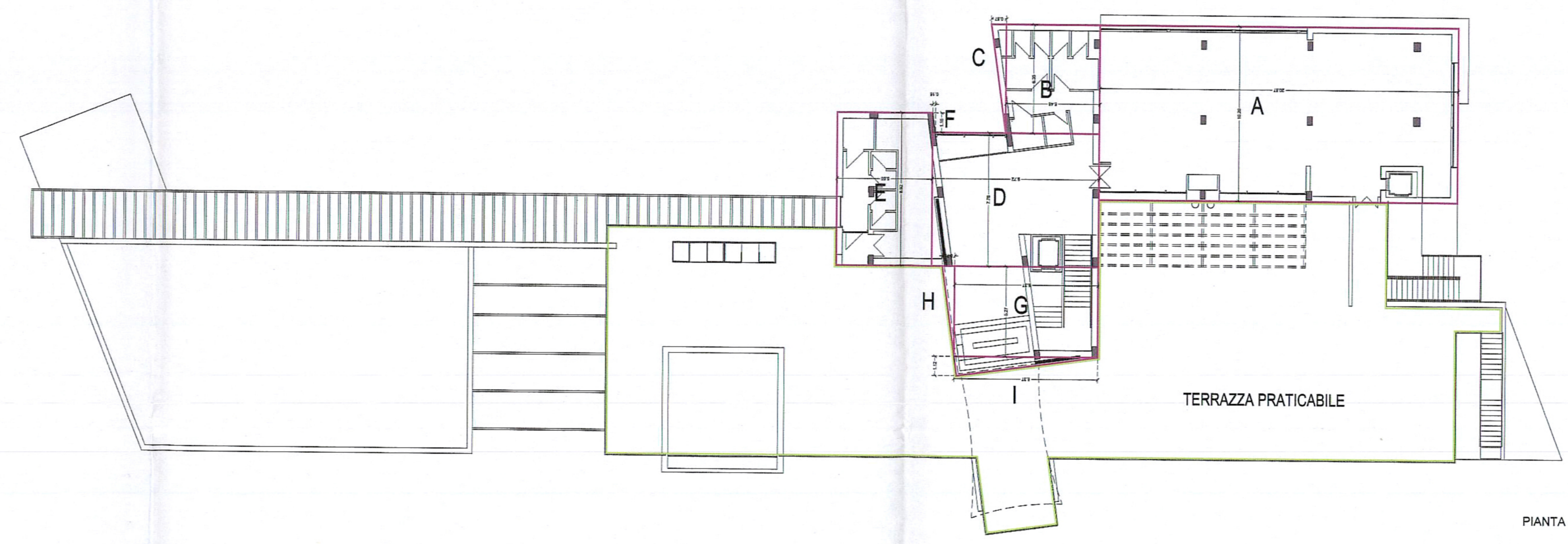
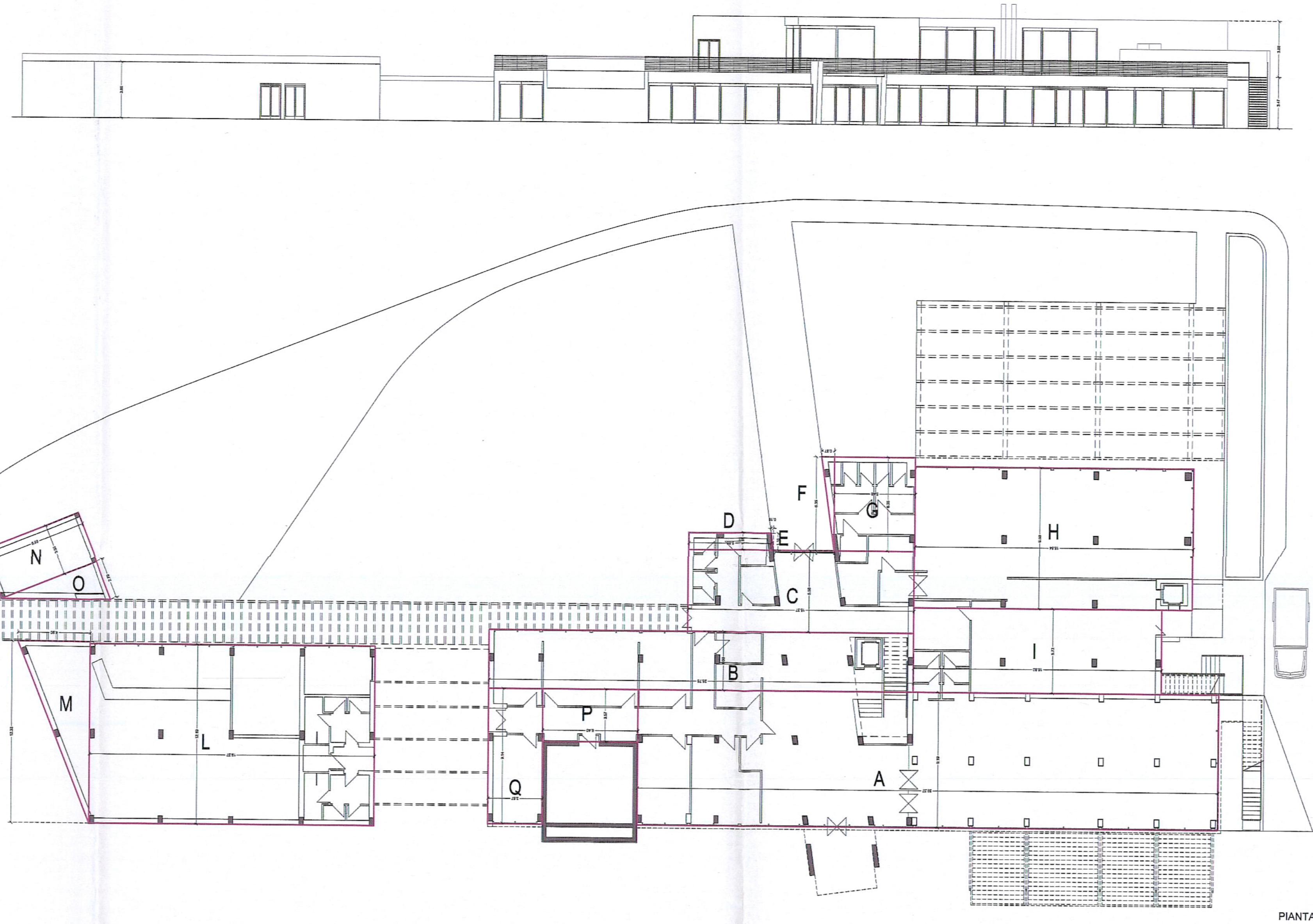
edificio TC



edificio EL1 esistente



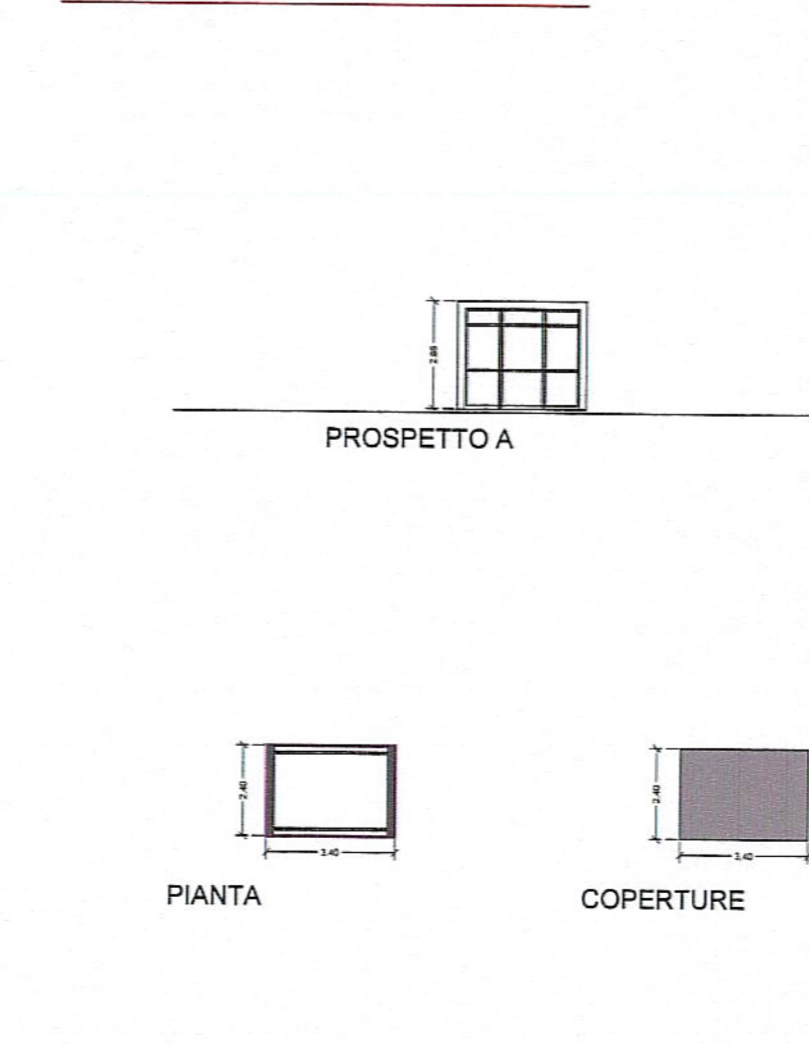
- 6 CABINA GRUPPO ELETTROGENO



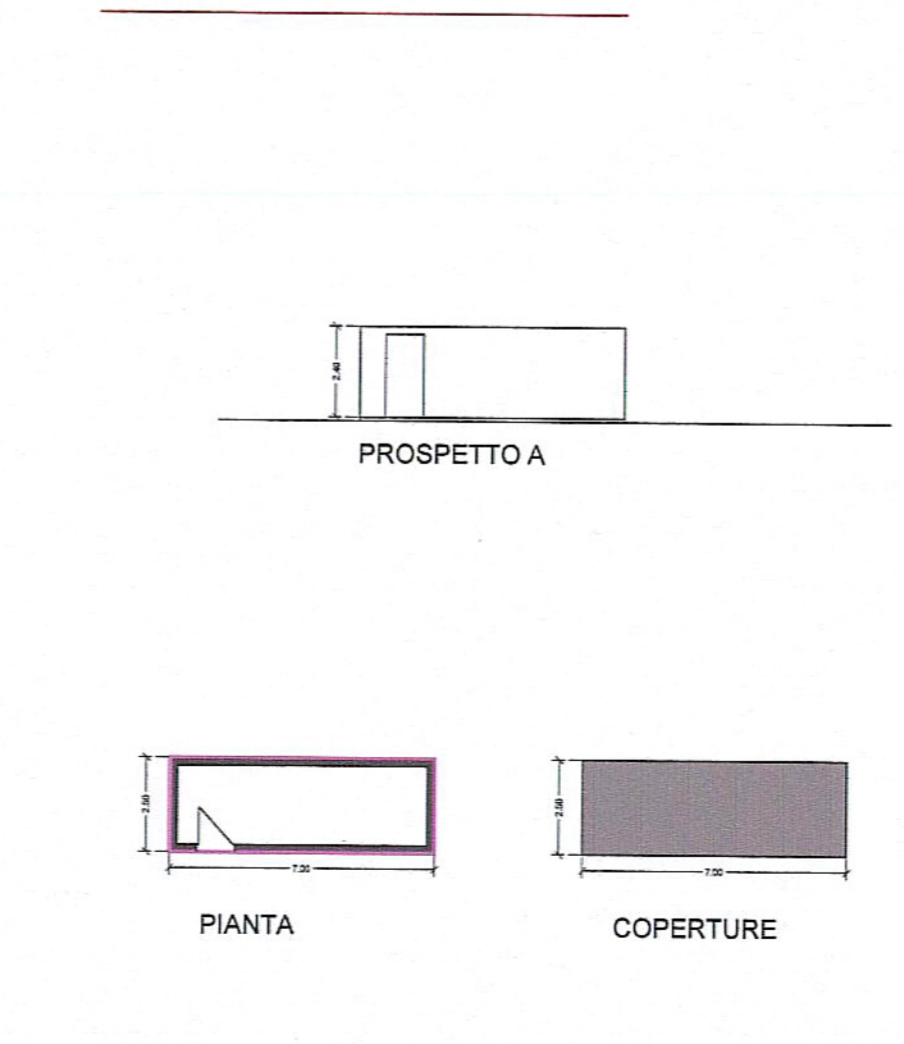
edificio SV



edificio BK



edificio EL2



COD. parti di progetto	CODICE di FUNZIONE/PIANO	NUM. Blocchi	CODICE FORME SEMPLICI	DIMENSIONI				SUP. COP TOT.	SUP. COP VOLUME	VOL. TOT.	
				LARGH	LUNGH	ALTEZZ	PORZ.				
BI 1	Saniti Igienici	2		4,00	6,00	2,85		24,00	48,00	61,20	122,40
BI 2	Saniti Igienici	2		4,00	6,00	2,85		24,00	48,00	61,20	122,40
DP 1	Depositi	4		2,30	6,40	2,35		14,08	56,32	33,09	132,34
DP 2	Depositi	4		2,30	6,40	2,35		14,08	56,32	33,09	132,34
DP 3	Depositi	4		2,30	6,40	2,35		14,08	56,32	33,09	132,34
DP 1 BI 4	Depositi	A		3,20	18,70	2,35		59,84	88,98	140,82	223,67
	Saniti Igienici	B		4,70	6,20	2,85		28,14			53,09
GU 1	Guardiana	A		2,28	0,31	2,85	0,60	0,35	13,67	1,50	38,97
		B		2,28	4,69	2,85		10,37			28,56
		C				2,85		2,95			8,41
GU 2	Guardiana	A		1,40	3,48	2,85		4,67	11,87	13,89	33,84
		B		2,50	2,80	2,85		7,00			19,95
LR	Locale Riforn.	A		2,55	8,07	3,15		20,58	38,56	64,82	121,45
		B		2,55	7,05	3,15		17,98			50,63
TCUB	Uffici di barconina	A		2,30	2,00	3,30		4,40	36,71	14,08	117,47
		B		2,70	1,75	3,30		4,73			15,12
		C		3,00	6,25	3,30		18,75			60,00
		D		3,04	4,53	3,30		8,82			28,27
LAB 1	Laboratorio	8,00	30,50	4,10			278,10	278,10	1140,21	1140,21	1140,21
LAB 2	Laboratorio	5,40	12,00	3,00			64,80	64,80	194,40	194,40	194,40
DPHUC	Depositi FUR di Carbone	5,40	16,00	3,00			66,40	66,40	259,20	259,20	259,20
EL 2	Cabina Elettrica	2,50	7,00	2,35			17,50	17,50	41,13	41,13	41,13
BK	Bunkeraggio	2,00	3,00	2,85			6,00	6,00	17,10	17,10	17,10
SV	Scuola Velistica	5,00	5,00	3,15			25,00	25,00	78,75	78,75	78,75
YC/PN	Yachting Club e Provveditoria Nautica P.T.	A		9,19	38,37	3,47		361,81	1184,45	1255,48	4483,66
		B		4,00	28,75	3,47		115,00			399,05
		C		5,98	15,37	3,47		85,76			297,60
		D		1,15	5,65	3,47		6,60			22,55
		E		0,16	1,15	3,47	0,50	0,08			0,32
		F		0,87	6,35	3,47	0,50	0,78			0,99
		G		5,48	6,35	3,47		34,80			120,79
		H		9,90	19,84	3,80		150,85			607,26
		I		5,73	16,80	3,80		96,36			365,80
		L		12,10	19,37	3,80		255,12			607,26
		M		4,90	12,33	3,80	0,50	30,21			114,79
		N		3,95	6,69	3,40		24,60			80,65
		O		2,10	6,05	3,40	0,50	8,67			32,97
		P		3,87	6,40	3,47		79,28			79,28
		Q		3,87	9,14	3,47		116,40			116,40
YC/PN P.1*		A		10,25	20,87	3,80		212,87	427,24	659,92	1623,51
		B		5,48	6,35	3,80		34,80			132,23
		C		0,87	6,35	3,80	0,50	2,76			10,50
		D		7,78	9,75	3,80		79,62			297,36
		E		5,65	9,52	3,80		50,40			191,51
		F		0,16	1,15	3,80	0,50	0,08			0,32
		G		5,27	8,37	3,80		44,11			167,85
		H		0,72	8,27	3,80	0,50	1,50			7,21
		I		1,15	8,37	3,80	0,50	4,69			17,81
BI 3/EL 2	Saniti Igienici							2,40		48,80	112,32
16	Cabina Enel							3,95		18,15	45,43
6	EL 1 Gruppo Eletrog.							2,40		15,60	37,44
14	DB Distr. Carburante							2,60		4,90	12,74
<b>TOTALE</b>											<b>9241,16</b>

CALCOLO DELLE SUPERFICI A TERRAZZA	
SUPERFICIE:	598 MQ

**REGIONE LAZIO  
COMUNE DI GAETA**

PROGETTO DI AMPLIAMENTO, RIQUALIFICAZIONE AMBIENTALE ED ADEGUAMENTO TECNOLOGICO DEL PORTO TURISTICO  
"BASE NAUTICA FLAVIO GIOIA"

PROGETTO DEFINITIVO  
PROGETTO  
OPERE A TERRA - ARCHITETTONICO

Titolo:  
Computo dei volumi geometrici

Revisions: \_\_\_\_\_ Data: Dicembre 2013 Firma: \_\_\_\_\_

Committente: BASE NAUTICA FLAVIO GIOIA S.P.A.  
Project Manager: ARCH. NICOLA CINQUE

Progettisti: **D**amicamente ARCHITETTI **STIGE** ARCHITETTI

Struttura - opere a terra: **G**emma ING. ROBERTO CASTELLUCCIO  
Ingegneria: ING. NICOLA MARCHETTI - ING. VERONICA VITTELLO

Strutture - opere a mare: **I**ngcost

Impianti: **I**ng. ANTONIO NAPOLITANO  
Geologia e Geotecnica: **G**EO. ANNAMARIA PERILLO - **I**NG. PIETRO DI STEFANO

Scala: 1/200  
Elaborato: **C.06**