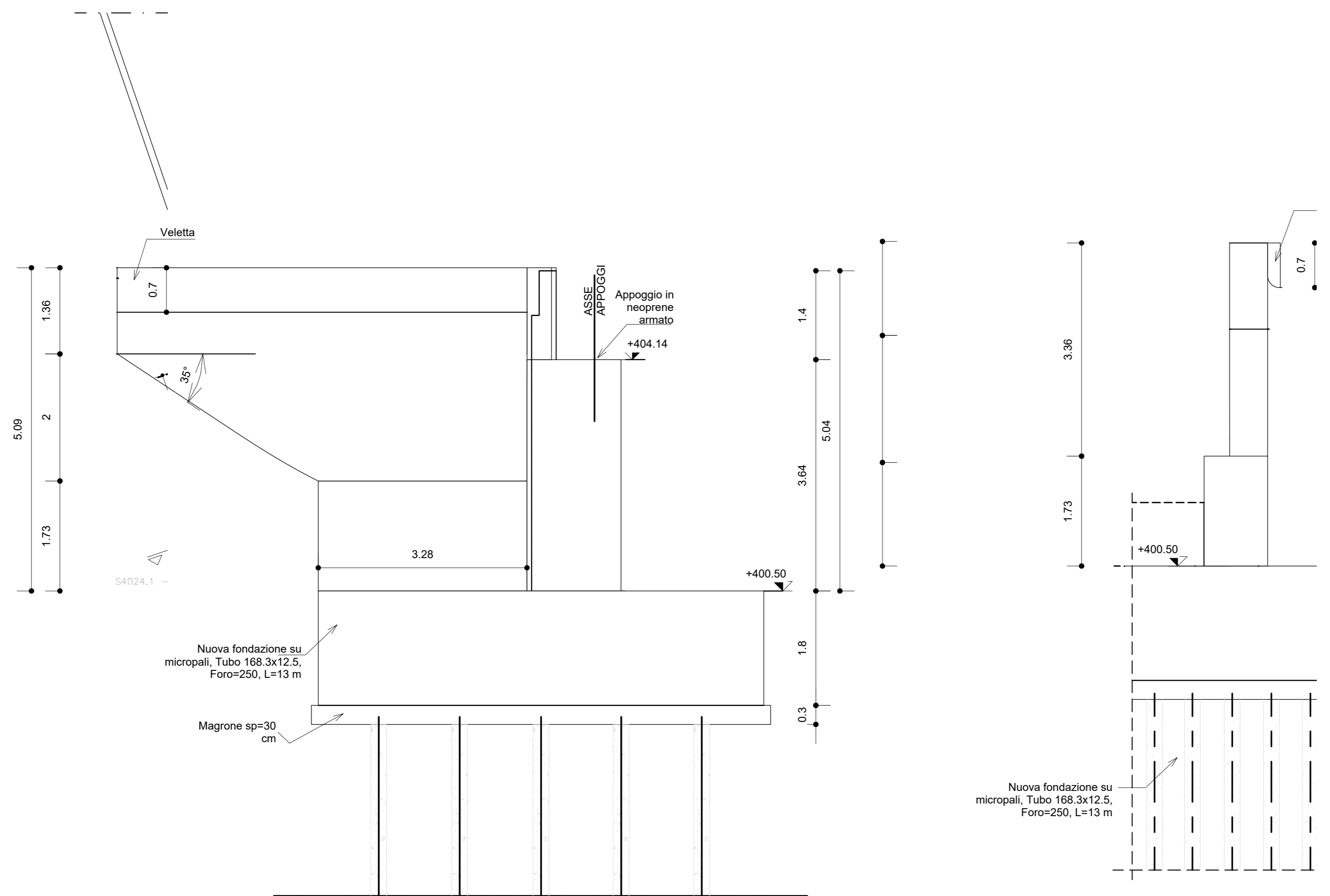
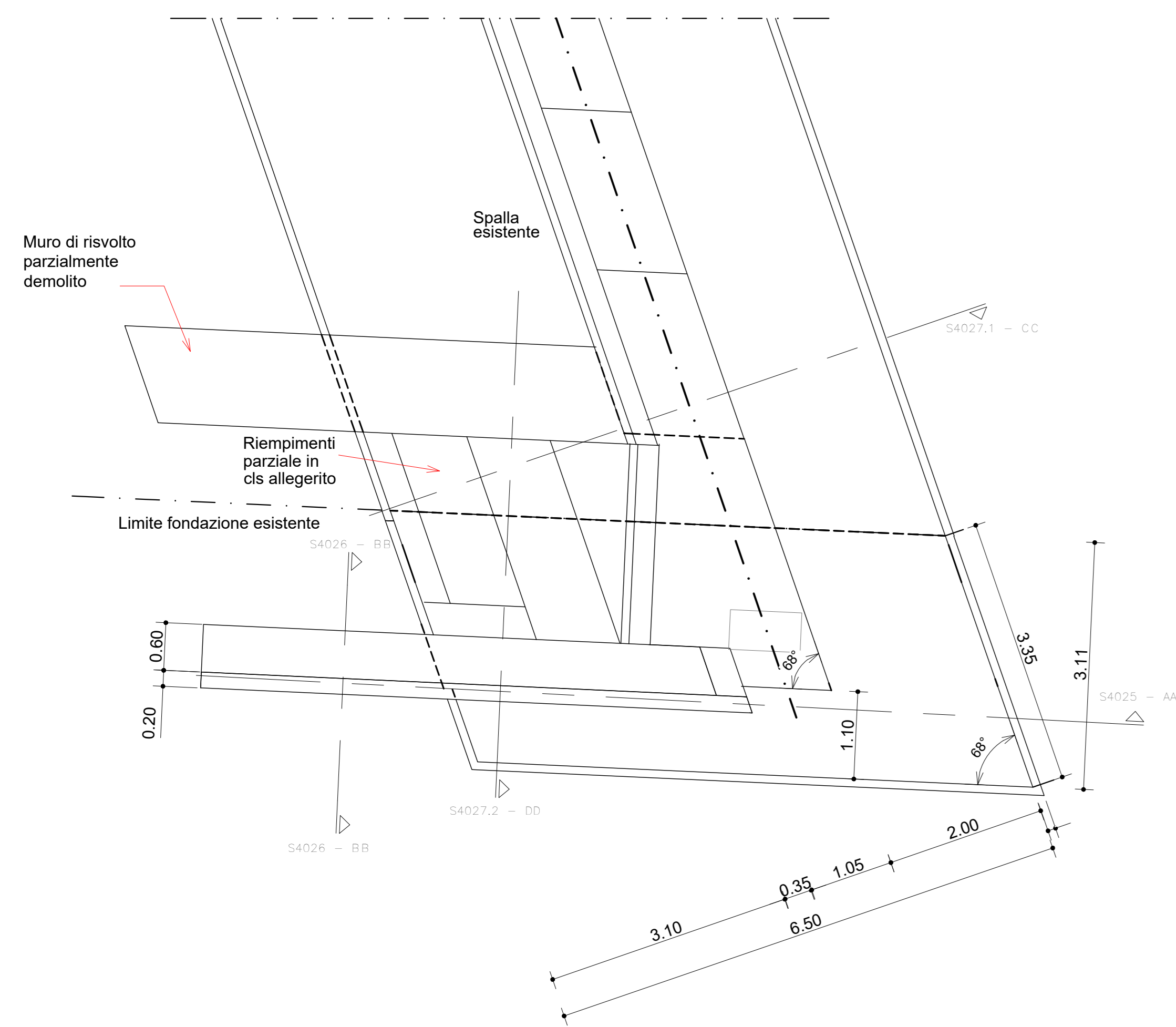


S1015 - Spalla lato BardonecchiaSP

1 : 50

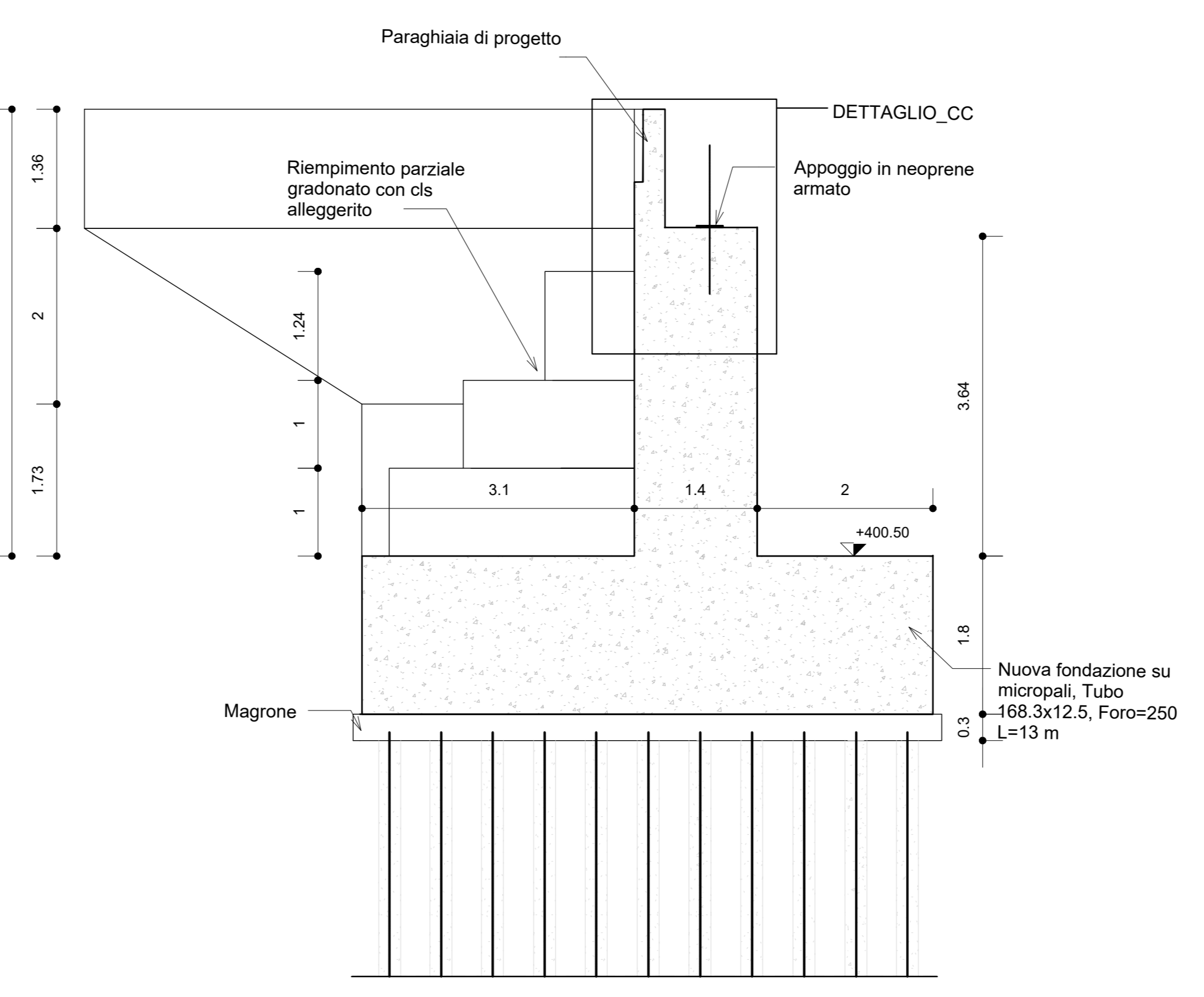


S4022 - AA

1 : 50

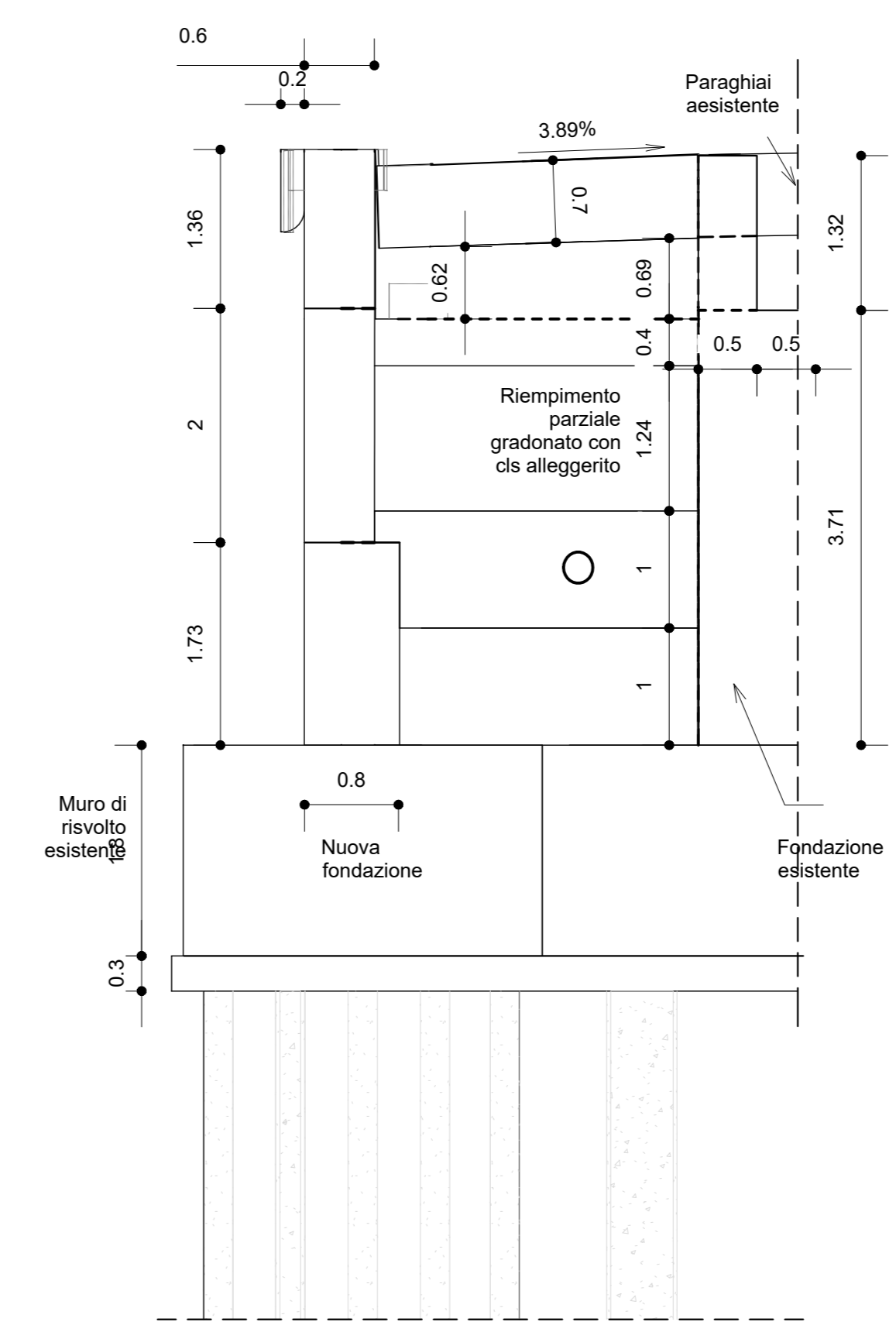
S4023 - BB

1 : 50



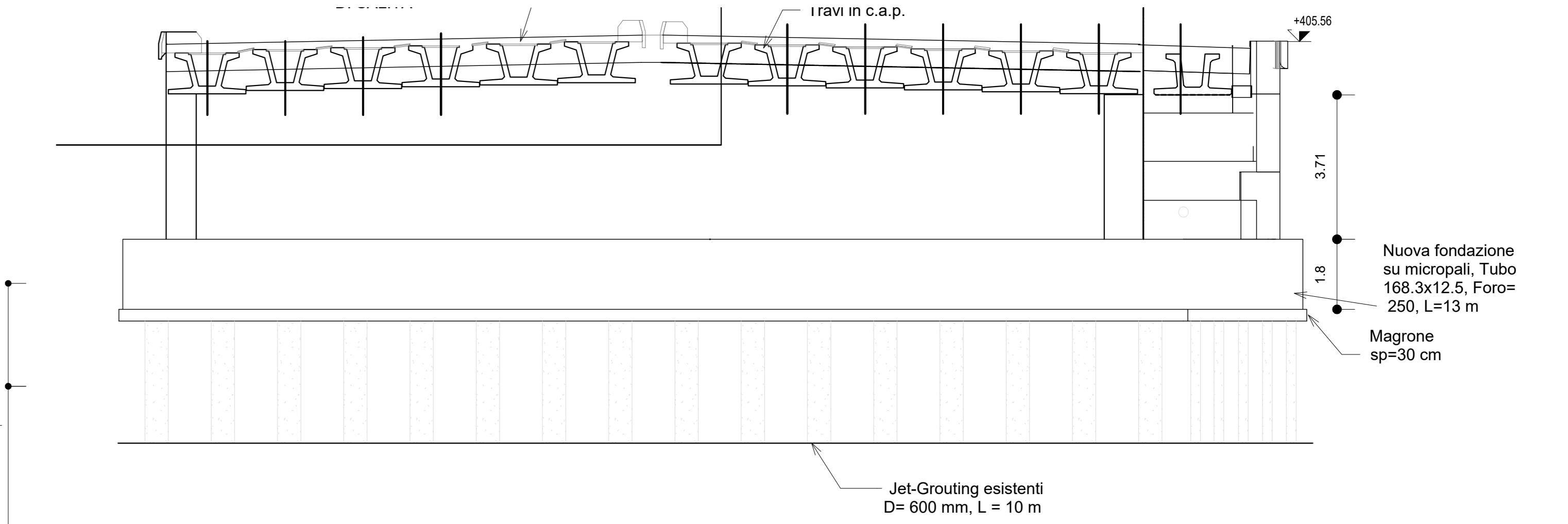
S4024.1 - CC

1 : 50



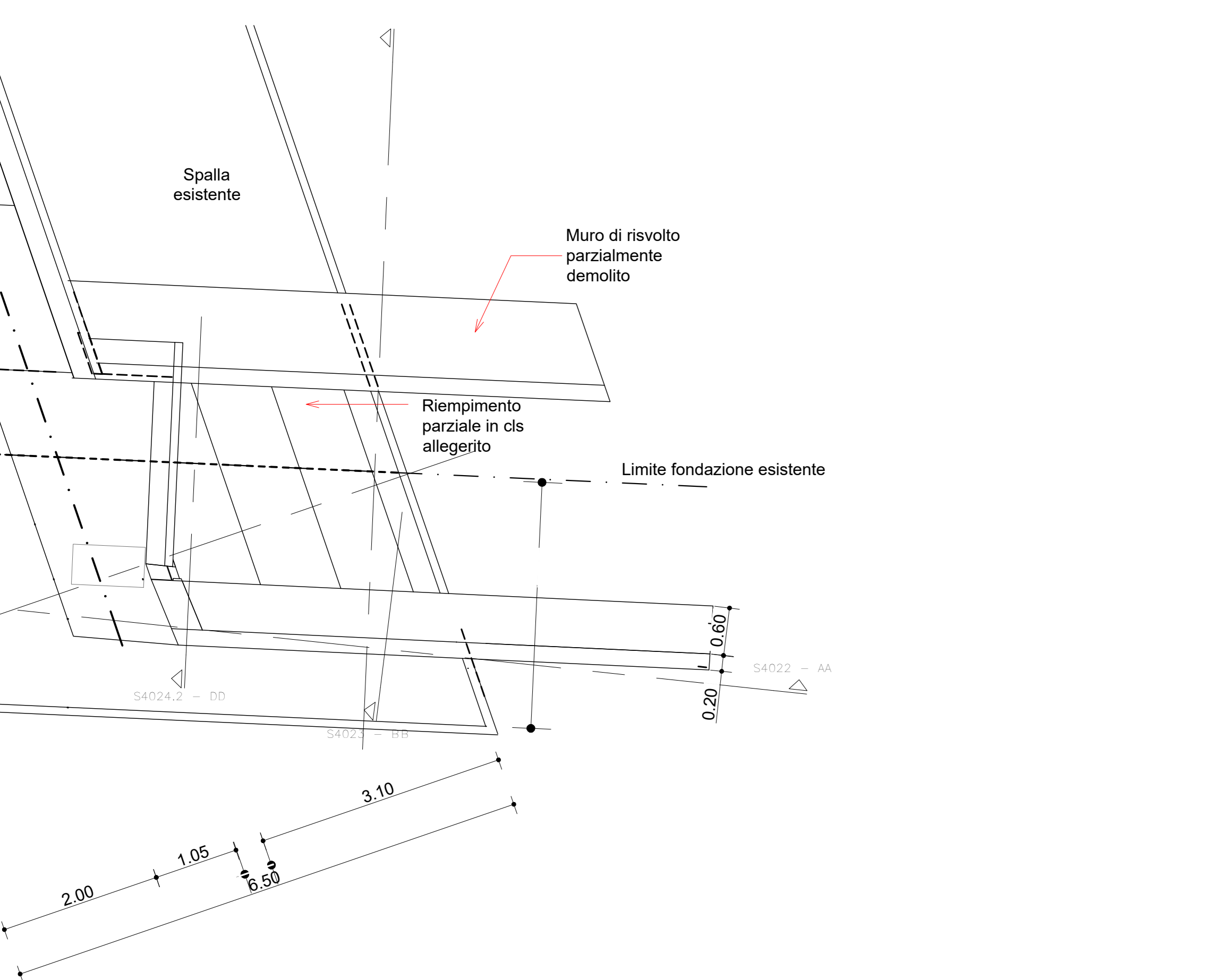
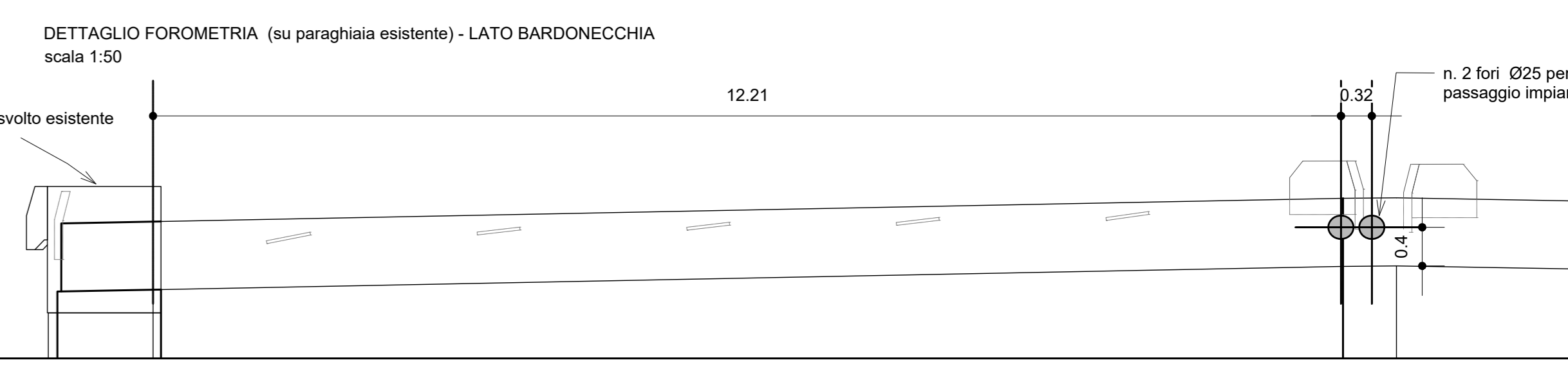
S4024.2 - DD

1 : 50



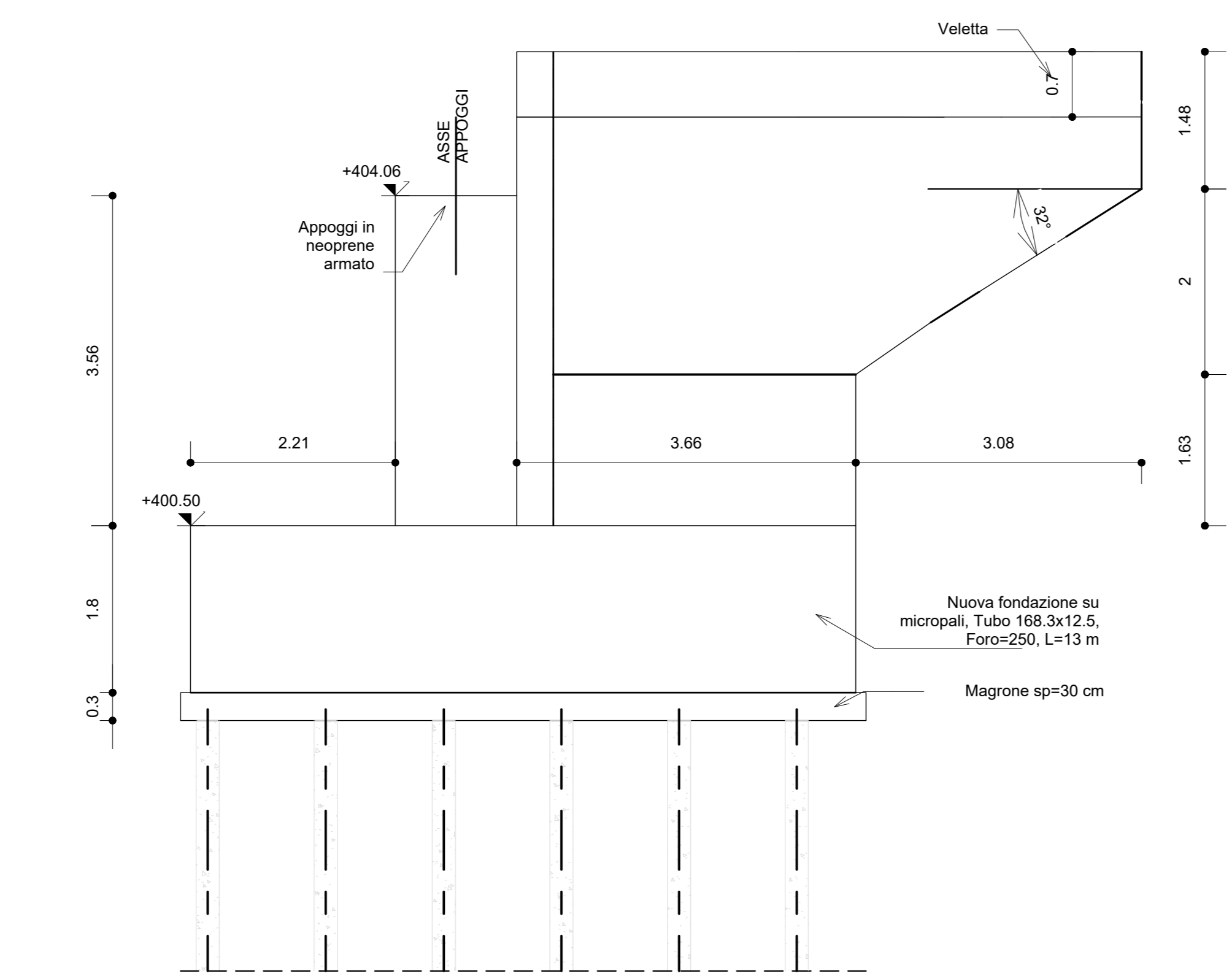
S4028 - Paragliaia_Lato_Bardonecchia

1 : 100



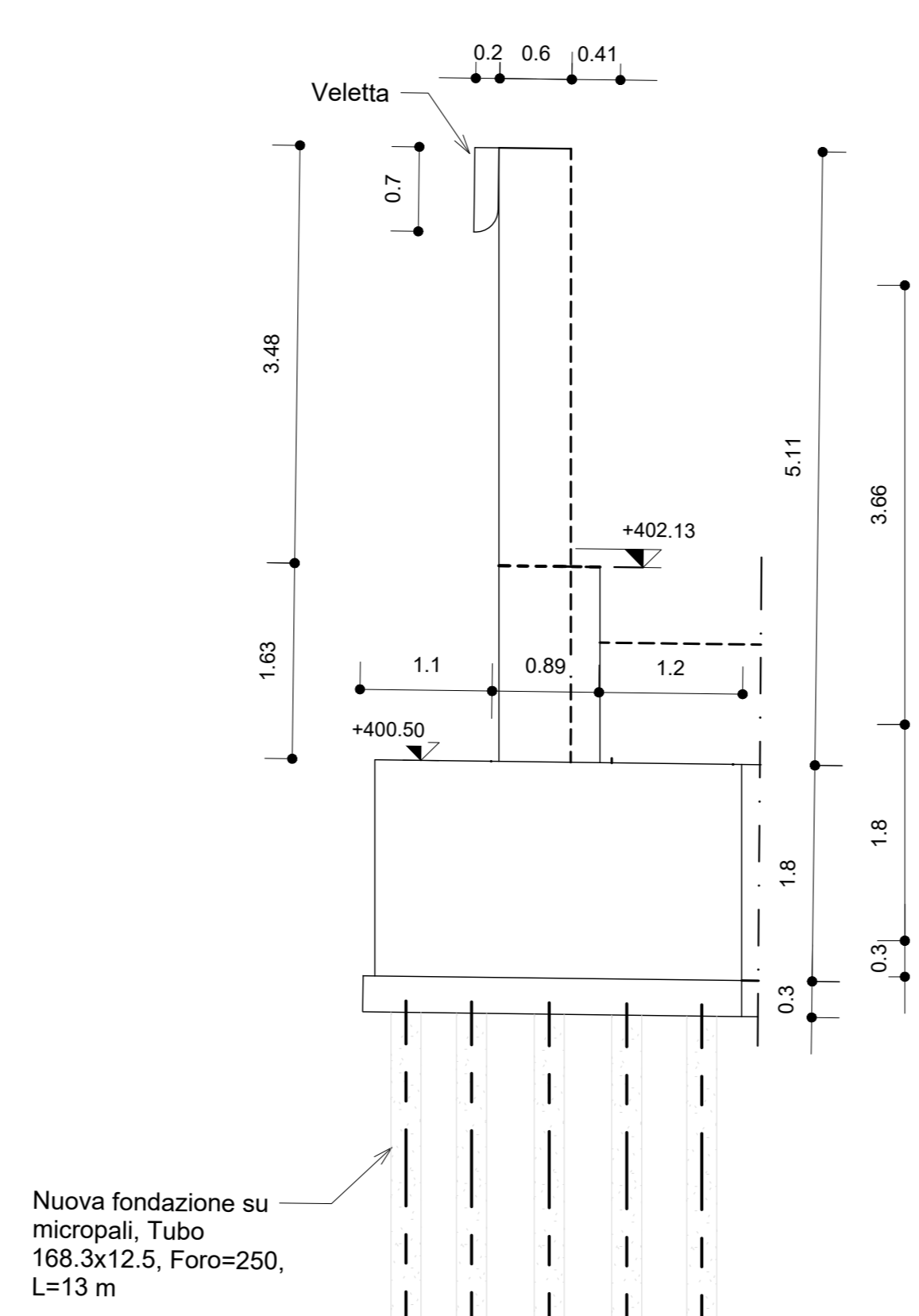
S1016 - Spalla lato Torino SP

1 : 50



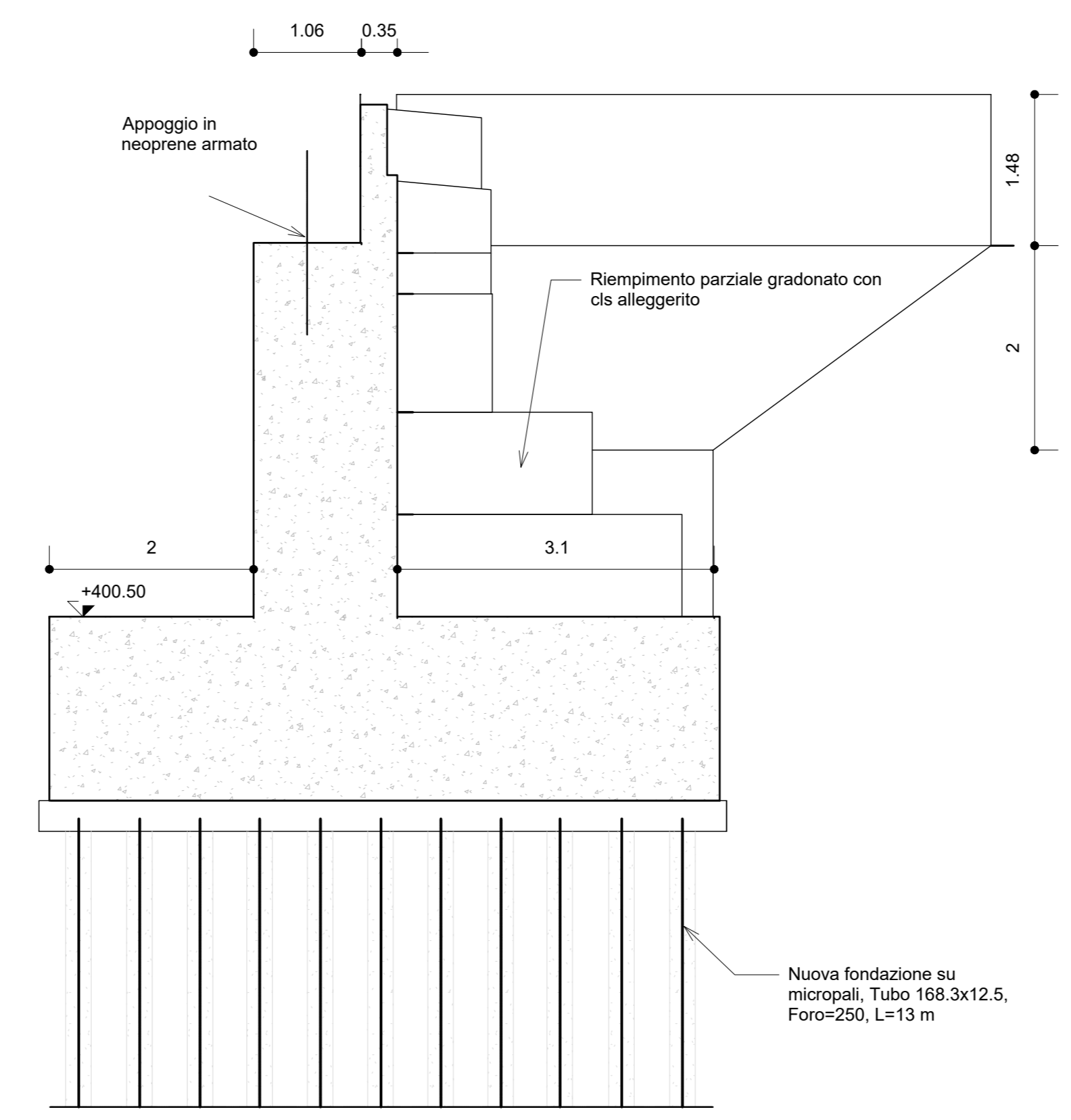
S4025 - AA

1 : 50



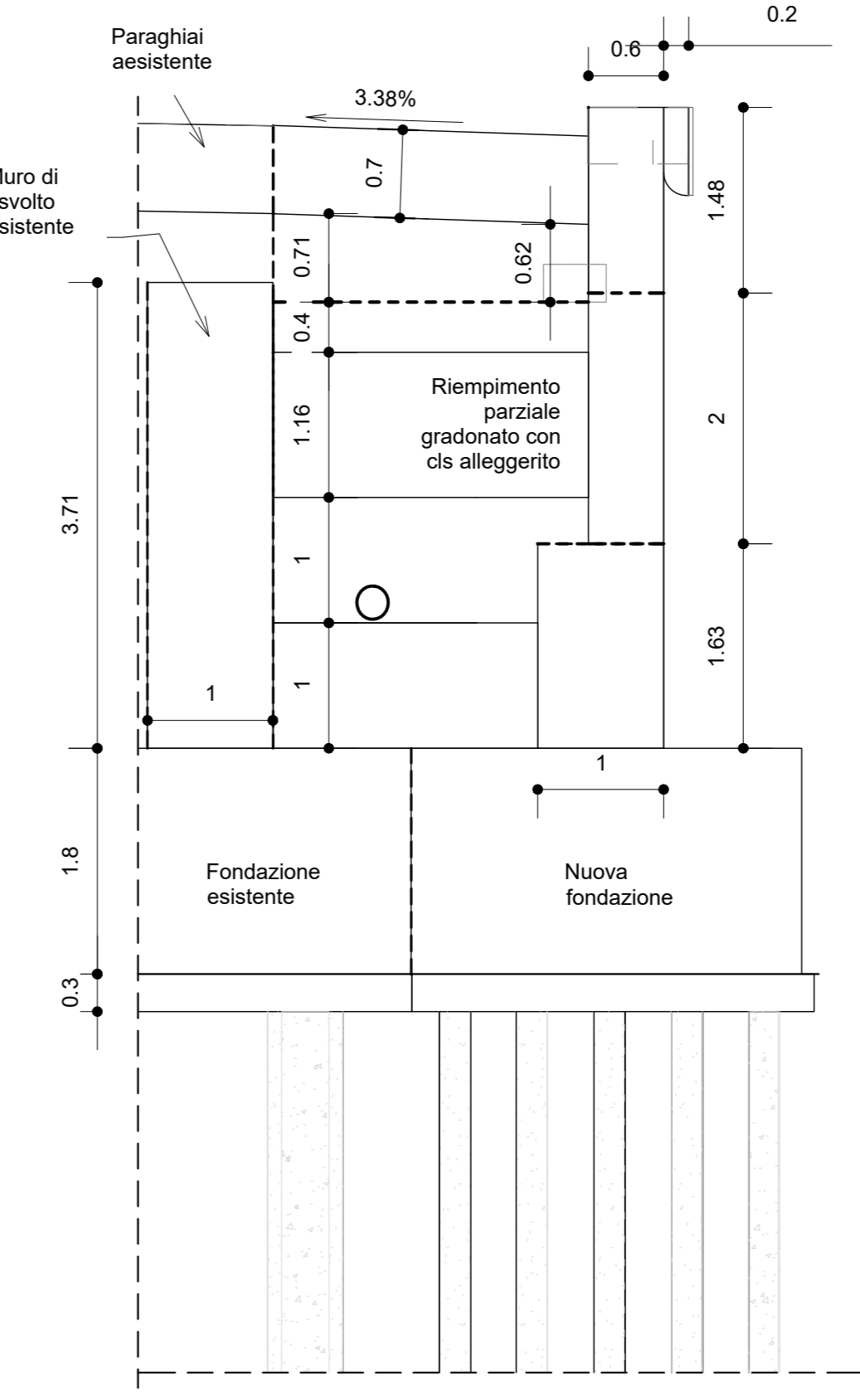
S4026 - BB

1 : 50



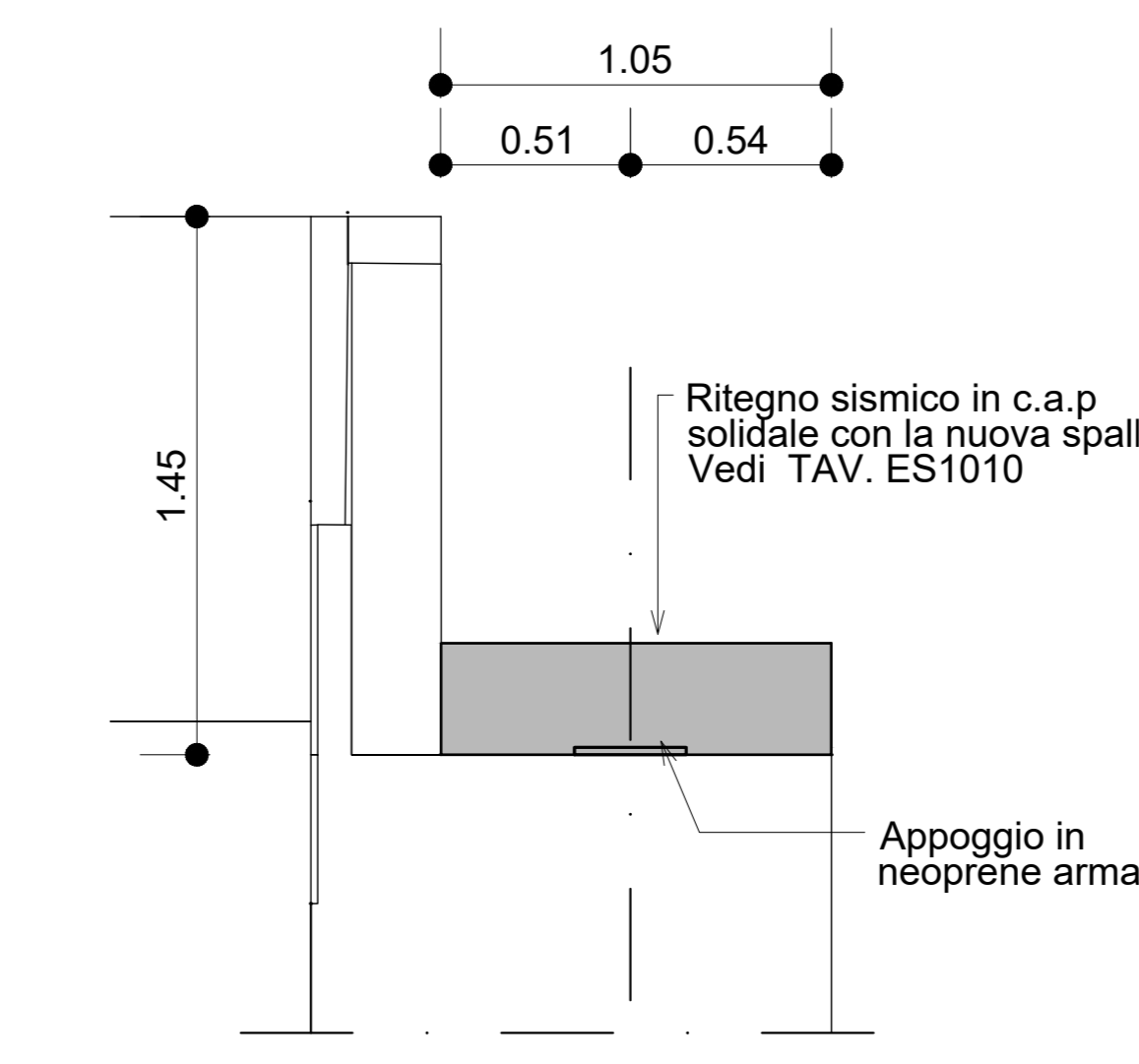
S4027.1 - CC

1 : 50



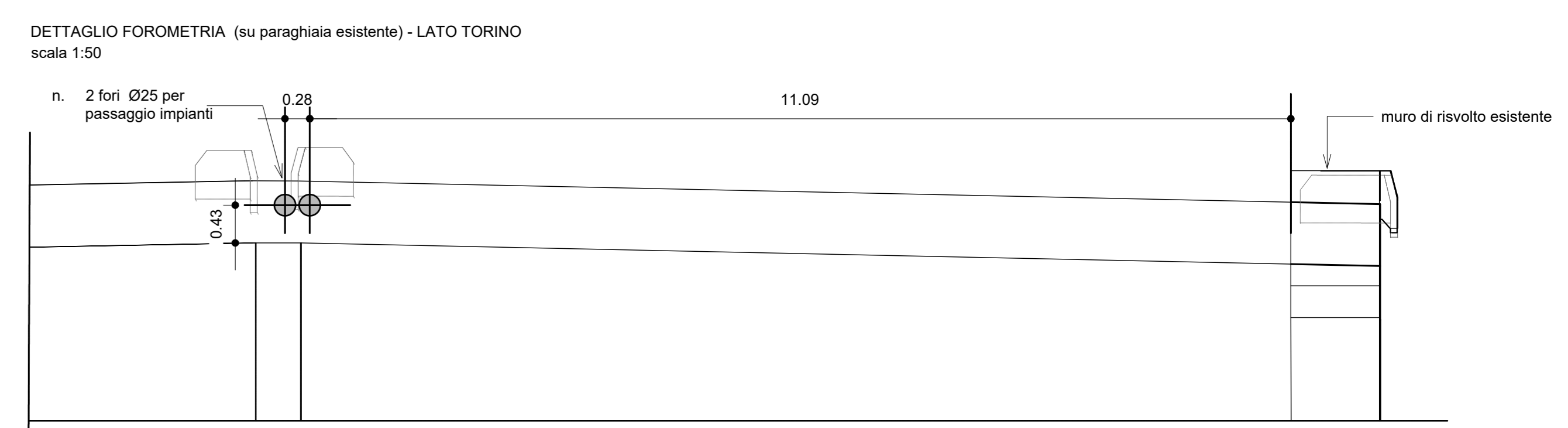
S4027.2 - DD

1 : 50



S4029 - Dettaglio_CC

1 : 20



CARATTERISTICHE DEI MATERIALI (conformi a D.M. 17.01.2018)

ACCIAIO PER C.A.									
TIPOLOGIA DEL PRODOTTO	ACCIAIO	f _{yk} (N/mm ²)	f _{tk} (N/mm ²)	NOTE					
Acciaio per armatura	A242	460	≥ 460	UNI EN 10080					
Acciaio per barre	B420S	460	≥ 460	UNI EN 10080					

ACCIAIO DA CARPENTERIA METALLICA									
TIPOLOGIA DEL PRODOTTO	ACCIAIO	f _{yk} (N/mm ²)	f _{tk} (N/mm ²)	NOTE					
Acciaio per travi	S235	235	≥ 235	UNI EN 10025-2					
Acciaio per pilastri	S275	275	≥ 275	UNI EN 10025-2					

BULLONI									
TIPOLOGIA DEL PRODOTTO	ACCIAIO	f _{yk} (N/mm ²)	f _{tk} (N/mm ²)	NOTE					
Bulloni per travi	S235	235	≥ 235	UNI EN 10025-2					
Bulloni per pilastri	S275	275	≥ 275	UNI EN 10025-2					

CORDONI DI SALDATURA									
TIPOLOGIA DEL PRODOTTO	ACCIAIO	f _{yk} (N/mm ²)	f _{tk} (N/mm ²)	NOTE					
Cordone singolo	S235	235	≥ 235	UNI EN 10025-2					
Cordone completo	S275	275	≥ 275	UNI EN 10025-2					

NUOVA LINEA TORINO LIONE - NOUVELLE LIGNE LYON TURIN
PARTE COMUNE ITALO-FRANCESE - PARTIE COMMUNE FRANCO-ITALIENNE

LOTTO COSTRUTTIVO 1/LOT DE CONSTRUCTION 1
CANTIERE OPERATIVO 02C - CHANTIER DE CONSTRUCTION 02C
RILocalizzazione DELL'AUTOPORTO DI SUSÀ
DEPLACEMENT DE L'AUTOPORTO DE SUSÉ
PROGETTO ESECUTIVO - ETUDES D'EXECUTION
CUP C11.05000030001 - CIG 652325367F

OPERE D'ARTE MINORI
ADEGUAMENTO OPERA PK 24+497
Carpenteria muri di risvolto

INDICAZIONE	QTD	DESCRIZIONE	UNITA' DI MISURA	PREZZO UNITARIO	PREZZO TOTALE
1	1	Parapetto in ferro	m
2	1	Parapetto in ferro	m

1 0 2 C 1 6 1 6 7 0 C A 0 W G **E G C P L 1 3 0 5 E**

SCALA / ÉCHELLE
Come indicato