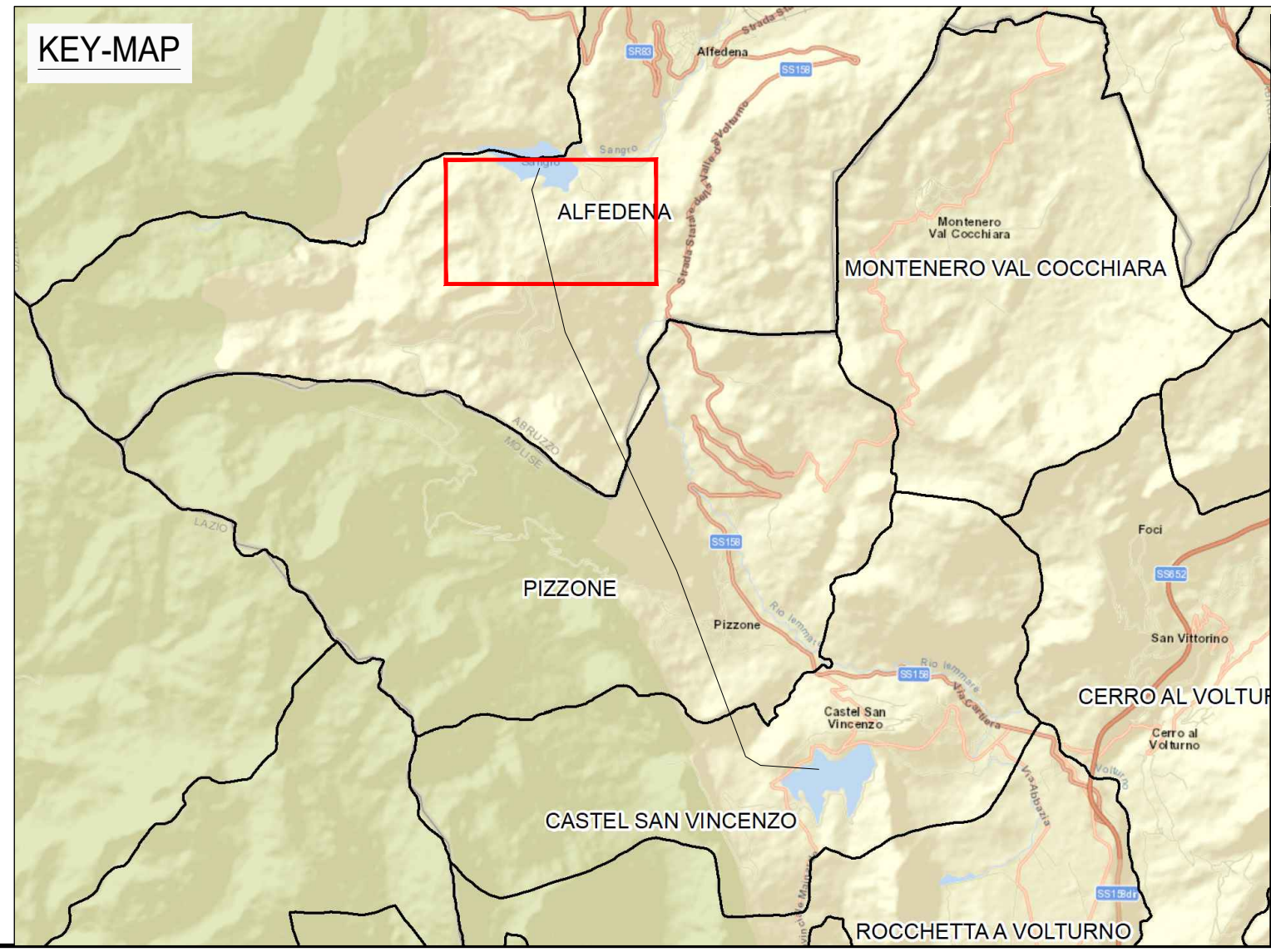


**NOTE:**

IL PRESENTE ELABORATO ANDRA' LETTO CONTESTUALMETNE CON IL DISEGNO GRE.EEC.D.14.IT.16071.00.076



ORDINE APPARTENENZA				Ingegnere	
PROVINCIA/REGIONE				Verona	
NUM. MATRICOLA				1542	
00	29-11-22	REVISIONE	R. Pirola	G. Panni	G. Sembenelli
REV.	DATE	DESCRIPTION	PREPARED	CHECKED	APPROVED
CONTRACTOR'S LOGO		PROJECT:			
		<b>IMPIANTO IDROELETTRICO DI PIZZONE II</b>			
FILE NAME:		GRE.EEC.D.14.IT.H.16071.00.075.00			
CLASSIFICATION:	FORMAT:	SCALE:	PLOT SCALE:	SHEET:	
<b>PUBLIC</b>	<b>A1</b>	<b>1:1000</b>	<b>1:1</b>	<b>1 di 2</b>	
UTILIZATION SCOPE:		TITLE:			
<b>Progetto Definitivo per Autorizzazione</b>		<b>VIE D'ACQUA GALLERIA DI ACCESSO AL CANTIERE MONTAGNA SPACCATA - PLANIMETRIA E TRACCIAMENTO</b>			
VALIDATED BY:		EGP CODE			
<b>F. TORASSO</b>					
VERIFIED BY:	-	GROUP:	FUNCTION:	TYPE:	ISSUER:
COLLABORATORS:	-	GROUP:	FUNCTION:	TYPE:	ISSUER:
		GREEC	D14	ITH	160710007500

This document is property of Enel Green Power SpA. It is strictly forbidden to reproduce this document, in whole or in part, and to provide to others any related information without the previous written consent of Enel Green Power SpA.