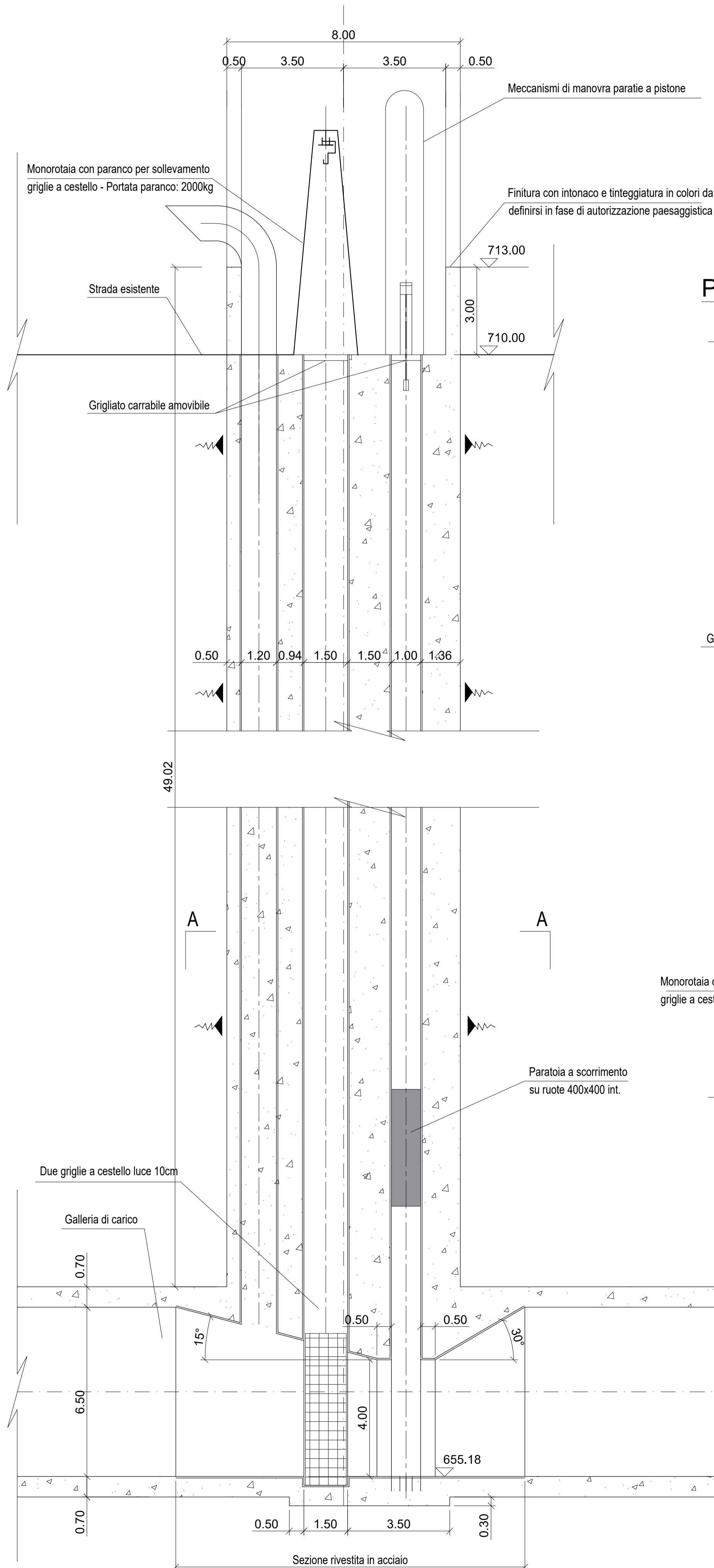
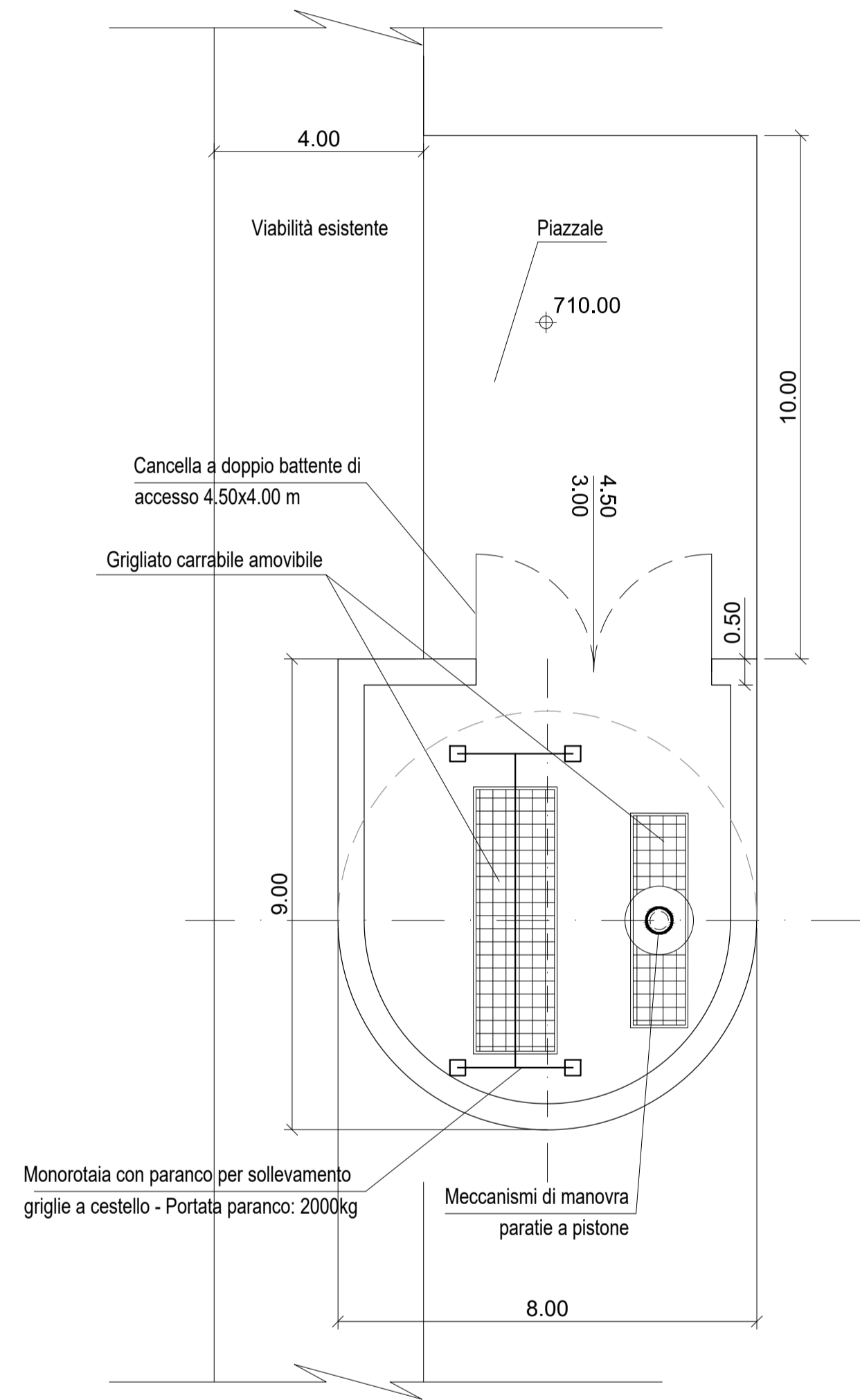


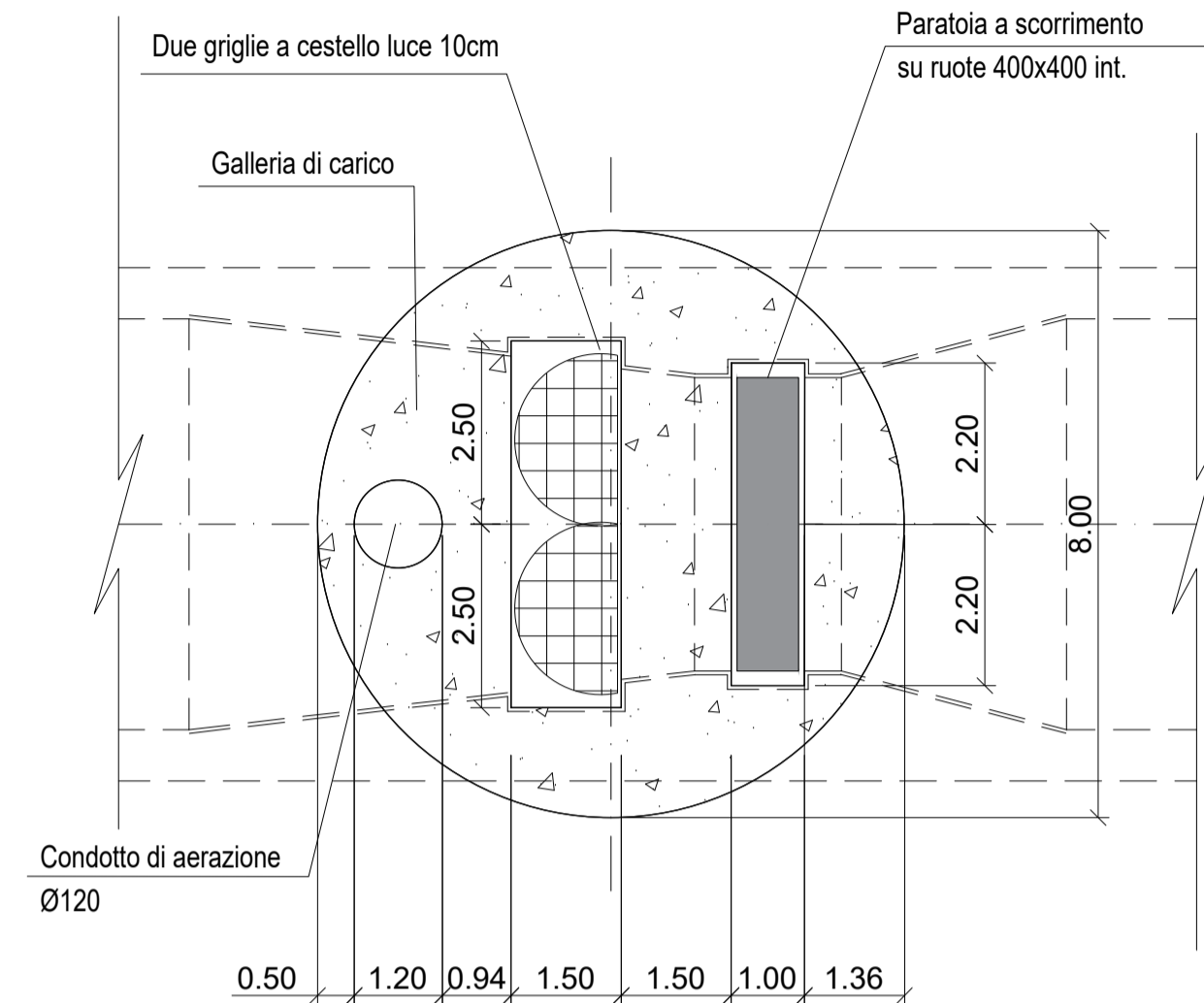
# SEZIONE POZZO PARATOIE DI VALLE



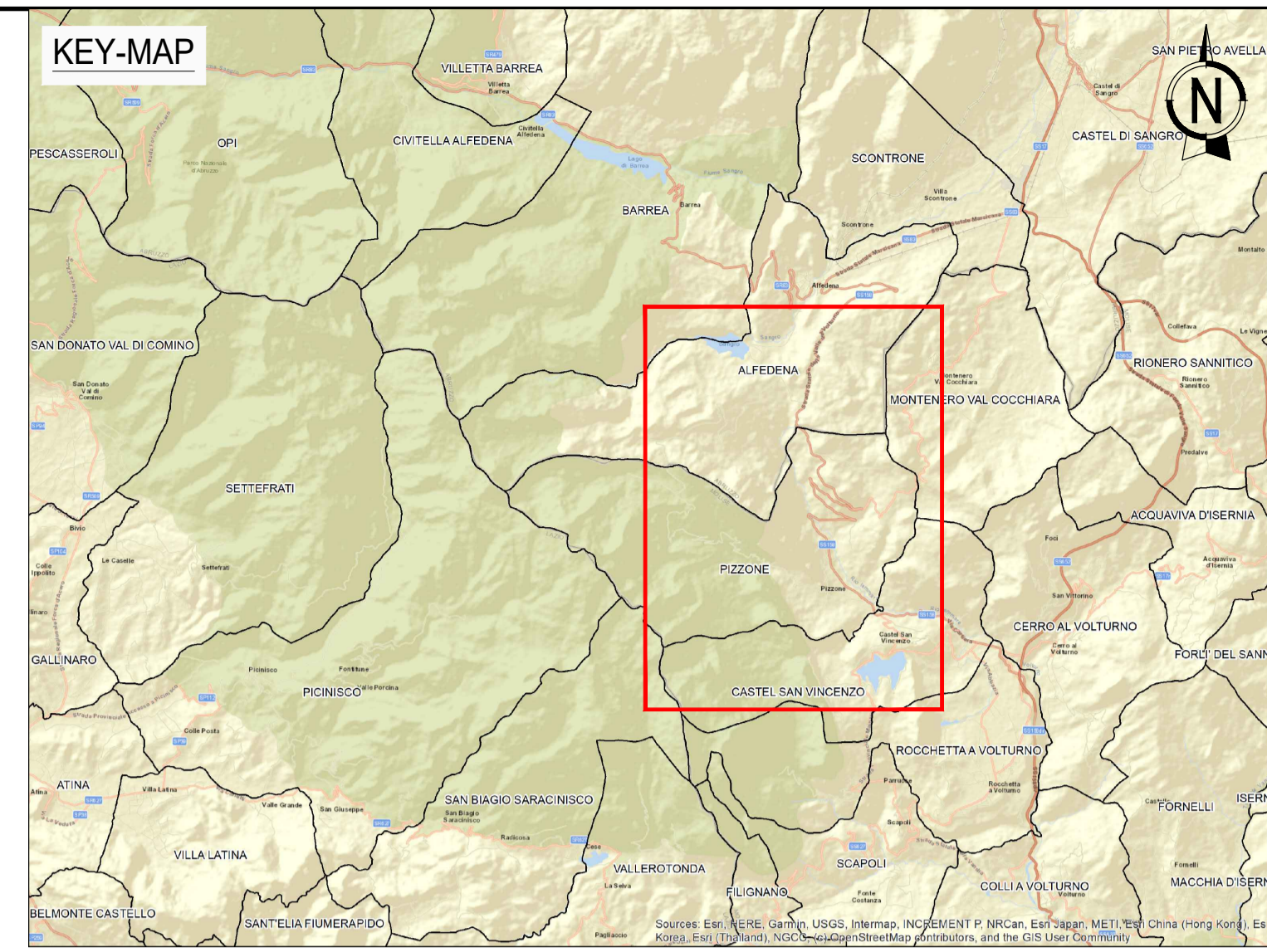
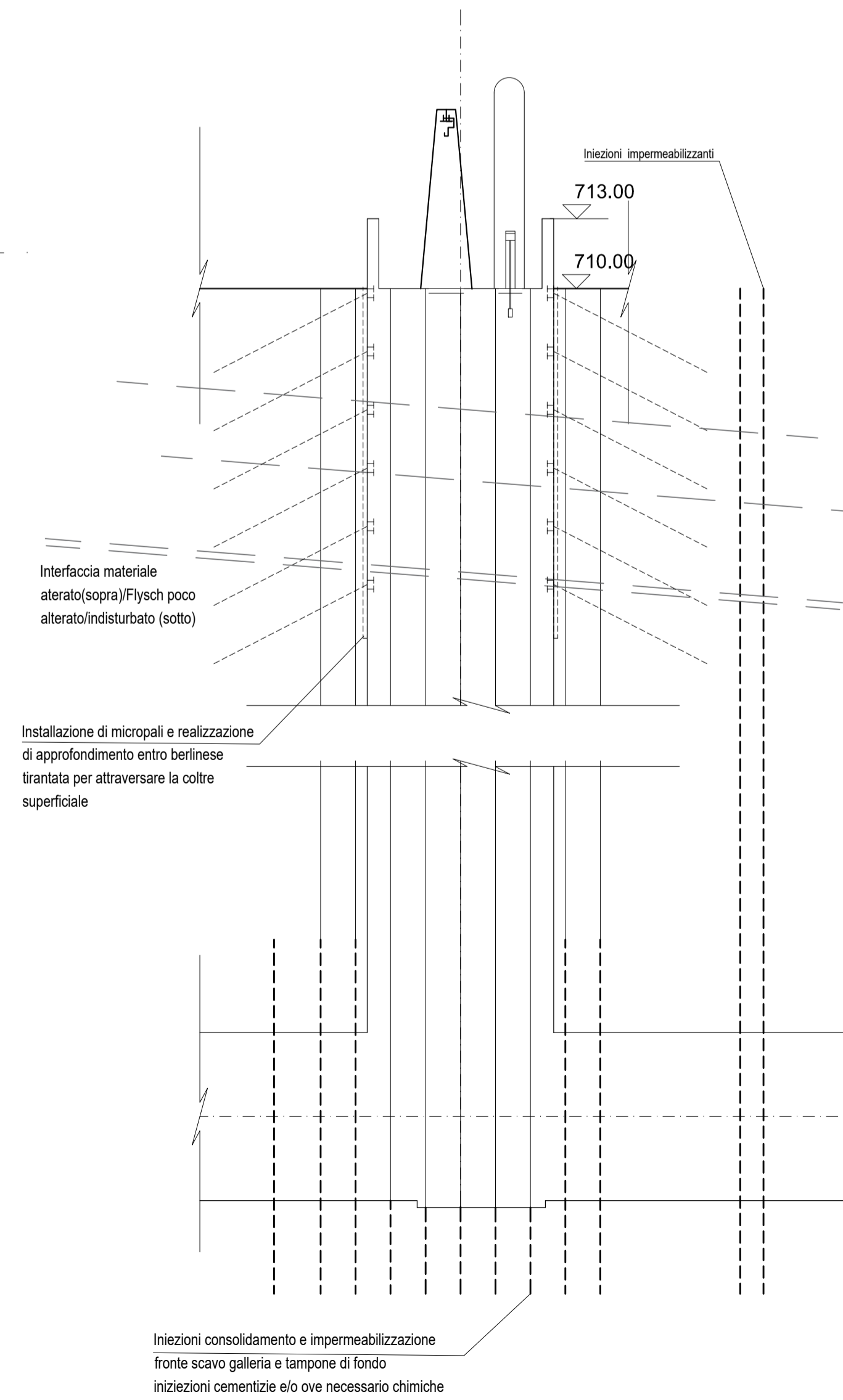
# PIANTA POZZO PARATOIE DI VALLE



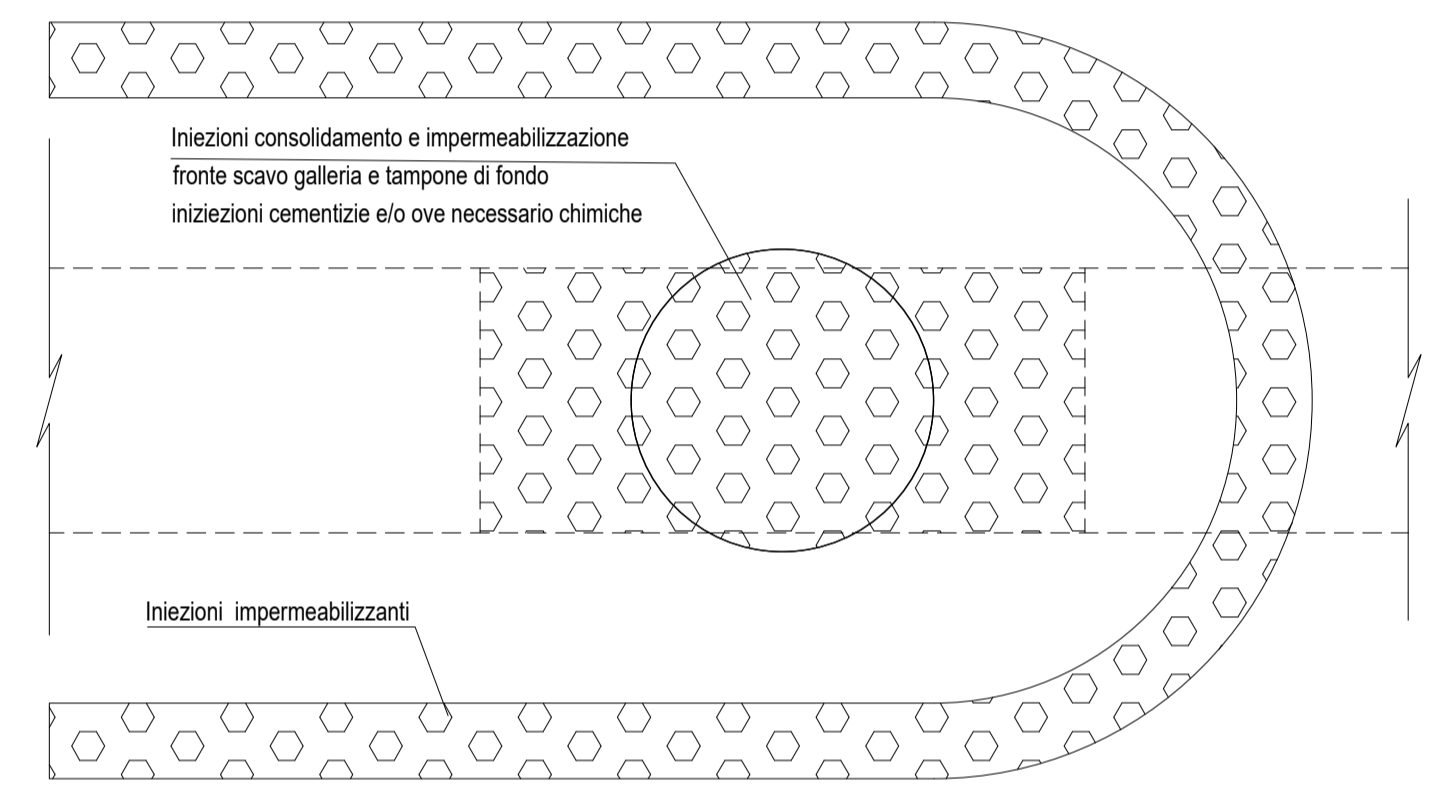
# SEZIONE A-A



# PROFILO INIEZIONI POZZO PARATOIE DI VALLE



# PIANTA IMPERMEABILIZZAZIONI POZZO PARATOIE DI VALLE



### NOTA

GLI EDIFICI FUORI TERRA SARANNO INTONACATI CON COLORI DA DEFINIRSI IN FASE DI AUTORIZZAZIONE PAESAGGISTICA



PROPRIO APPARTENENZA				Ingegnere
PROVINCIA/REGIONE				Verona
NUM. MATRICOLA				1542
REV. DATE	29-11-22	REVISIONE	R. Pirola	G. Panni
REV.	DATE	DESCRIPTION	PREPARED	CHECKED
CONTRACTOR'S LOGO	PROJECT: <b>IMPIANTO IDROELETTRICO DI PIZZONE II</b>			
FILE NAME:	GRE.EEC.D.14.IT.H.16071.00.102.00			
CLASSIFICATION:	<b>PUBLIC</b>	FORMAT:	A1	SCALE:
UTILIZATION SCOPE:	<b>Progetto Definitivo per Autorizzazione</b>		SCALE:	1:100
TITLE:	<b>VIE D'ACQUA</b>		PLOT SCALE:	1:1
VALIDATED BY:	F. TORASSO		EGP CODE:	1 di 1
VERIFIED BY:	-		GROUP:	FUNCTION:
COLLABORATORS:	-		TYPE:	ISSUER:
GROUP:		FUNCTION:	TYPE:	ISSUER:
COUNTRY:		TEC:	PLANT:	SYSTEM:
PROGRESSIVE:		REVISION:	EGP CODE	
GROUP:		FUNCTION:	TYPE:	ISSUER:
COUNTRY:		TEC:	PLANT:	SYSTEM:
PROGRESSIVE:		REVISION:	EGP CODE	
GRE.EEC.D.14.IT.H.16071.00.102.00				