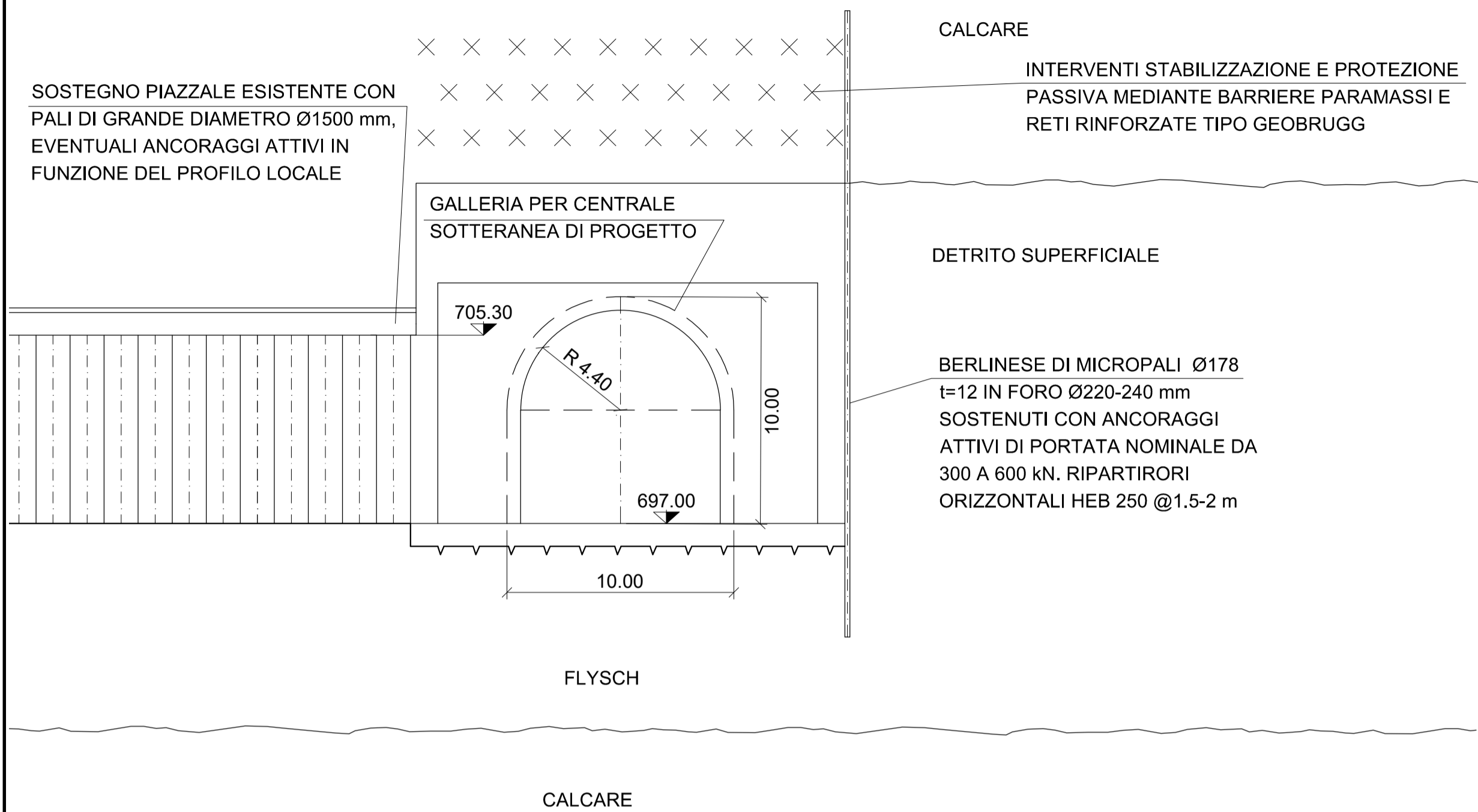
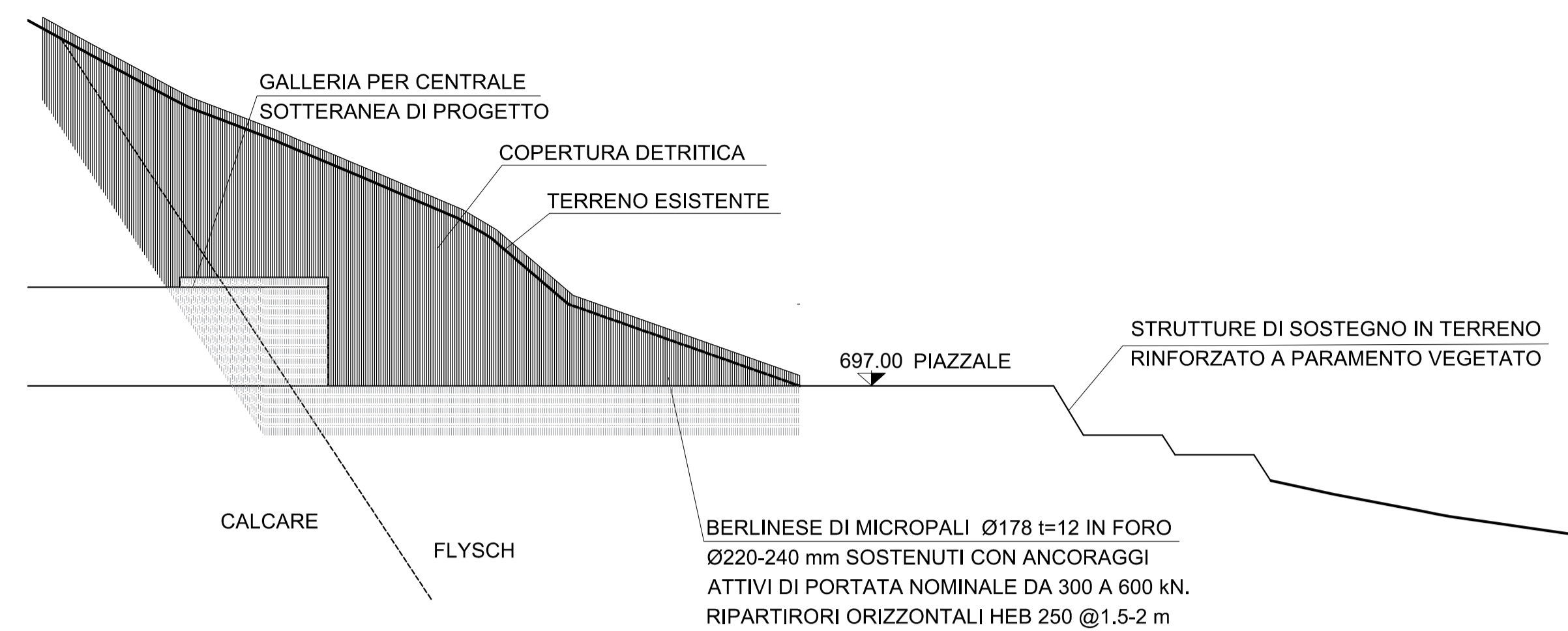


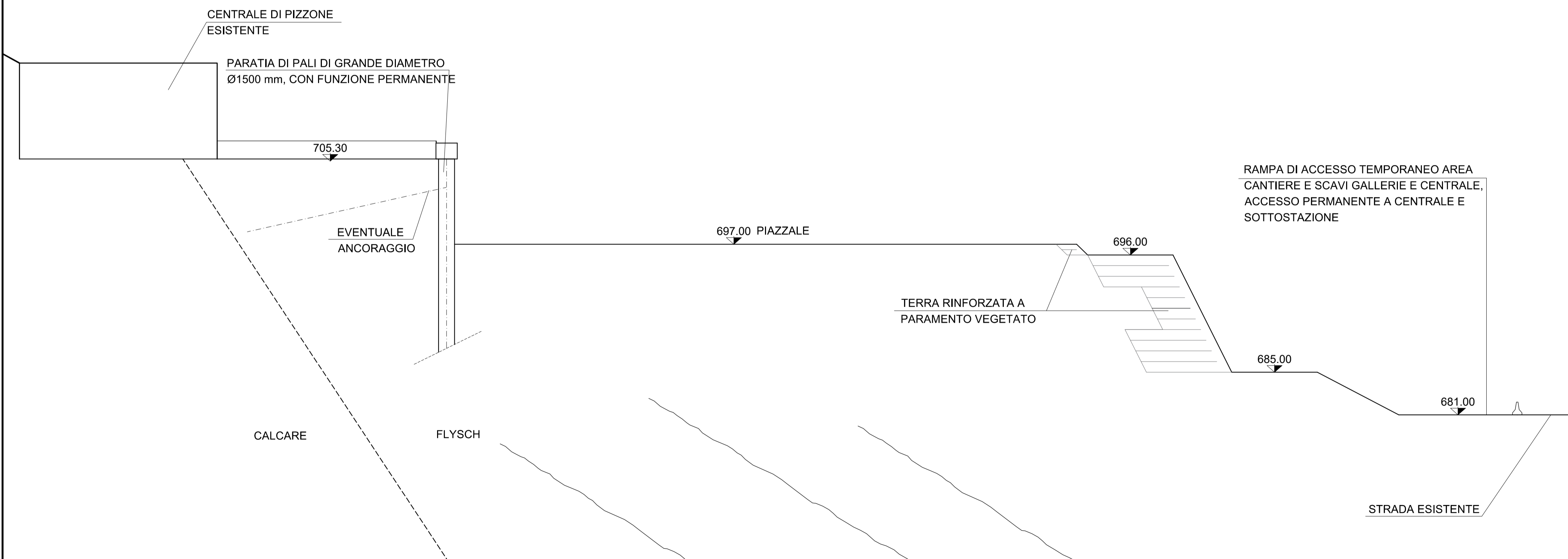
SEZIONE A-A



SEZIONE B-B

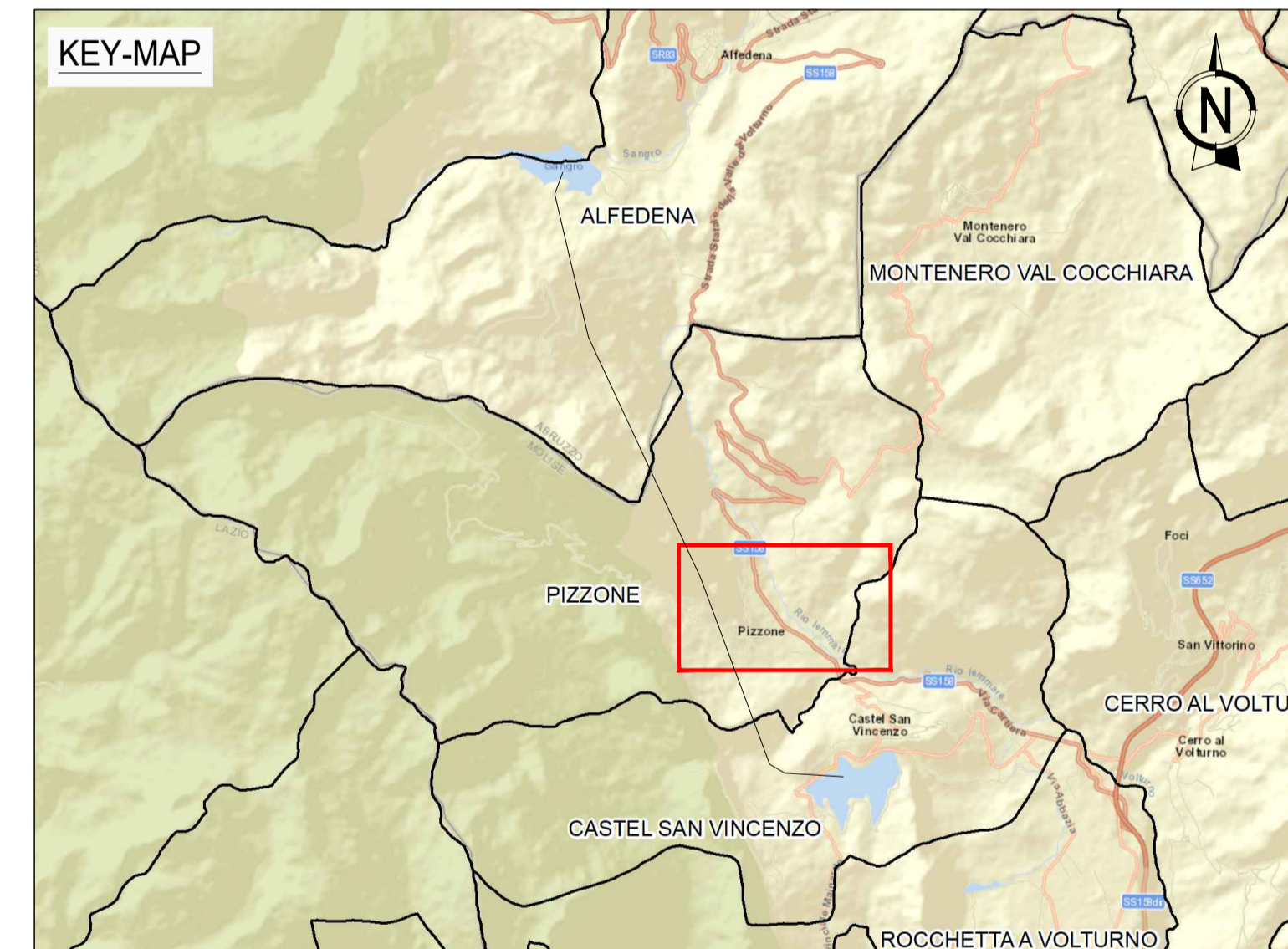


SEZIONE C-C



NOTE:

IL PRESENTE ELABORATO VA LETTO CONTESTUALMENTE CON IL DISEGNO GRE.ECC.D.14.IT.H.16071.00.129



PROVINCIA/REGIONE					Ingegnere
NUM. MATRICOLA					Verona
00	29-11-22	REVISIONE	R. Pirola	G. Panni	G. Sembenelli
REV.	DATE	DESCRIPTION	PREPARED	CHECKED	APPROVED

		IMPIANTO IDROELETTRICO DI PIZZONE II			
		FILE NAME: GRE.ECC.D.14.IT.H.16071.00.129-130.00			
CLASSIFICATION:	PUBLIC	FORMAT:	A1	SCALE:	VARIE
UTILIZATION SCOPE:	Progetto Definitivo per Autorizzazione	PLOT SCALE:	1:1	SHEET:	1 di 1
VALIDATED BY: F. TORASSO		TITLE: CENTRALE IN CAVERNA GALLERIE DI ACCESSO ALLA CENTRALE: IMBOCCO GALLERIE LATO CENTRALE PIZZONE ESISTENTE - SEZIONI			
EGP CODE					
VERIFIED BY:	-	GROUP:	FUNCTION:	TYPE:	ISSUER:
COLLABORATORS:	-	GROUP:	FUNCTION:	TYPE:	ISSUER:
GRE.ECC.D.14.IT.H.16071.00.130.00					

This document is property of Enel Green Power SpA. It is strictly forbidden to reproduce this document, in whole or in part, and to provide to others any related information without the previous written consent of Enel Green Power SpA.