

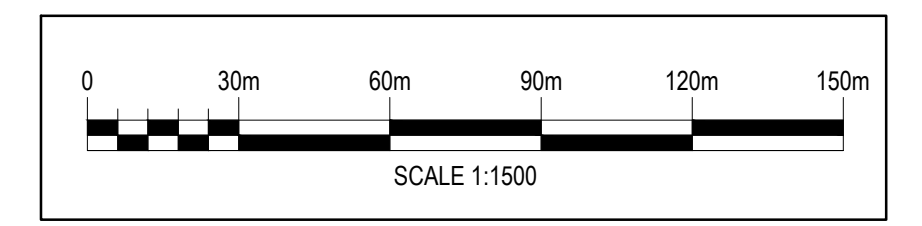
REFERENCE DOCUMENTS	
021703BZRB71008	DESIGN PREMISES
076300BZDA76009	FABRIZIA 1 - TIE-IN PIPELINE DAVIDE - GROTTAMMARE PIPELINES SCH.
IDP AM791	FABRIZIA 1 - TIE-IN PIPELINE DAVIDE - GROTTAMMARE SURVEY REPORT

GEODETTIC PARAMETERS	
<b>DATUM : ROMA 1940</b> ELLISSOIDE: HAYFORD 1924 Semiasse Maggiore: 6378388.00m Schiacciamento: 1/297 PROIEZIONE: GAUSS-BOAGA FUSO EST Metodo: Trasversa Mercatore Falso Est: 2520000m Falso Nord: 0m Meridiano Centrale: 15°E Fattore di Riduzione: 0.9996	<b>DATUM SHIFT ENI (da WGS84 a ROMA 1940)</b> Traslazione x: +223.700m Traslazione y: +67.380m Traslazione z: -1.340m Rotazione Rx: 0° Rotazione Ry: 0° Rotazione Rz: 0° Scala: 0.0ppm VERTICAL DATUM: Livello Medio Mare

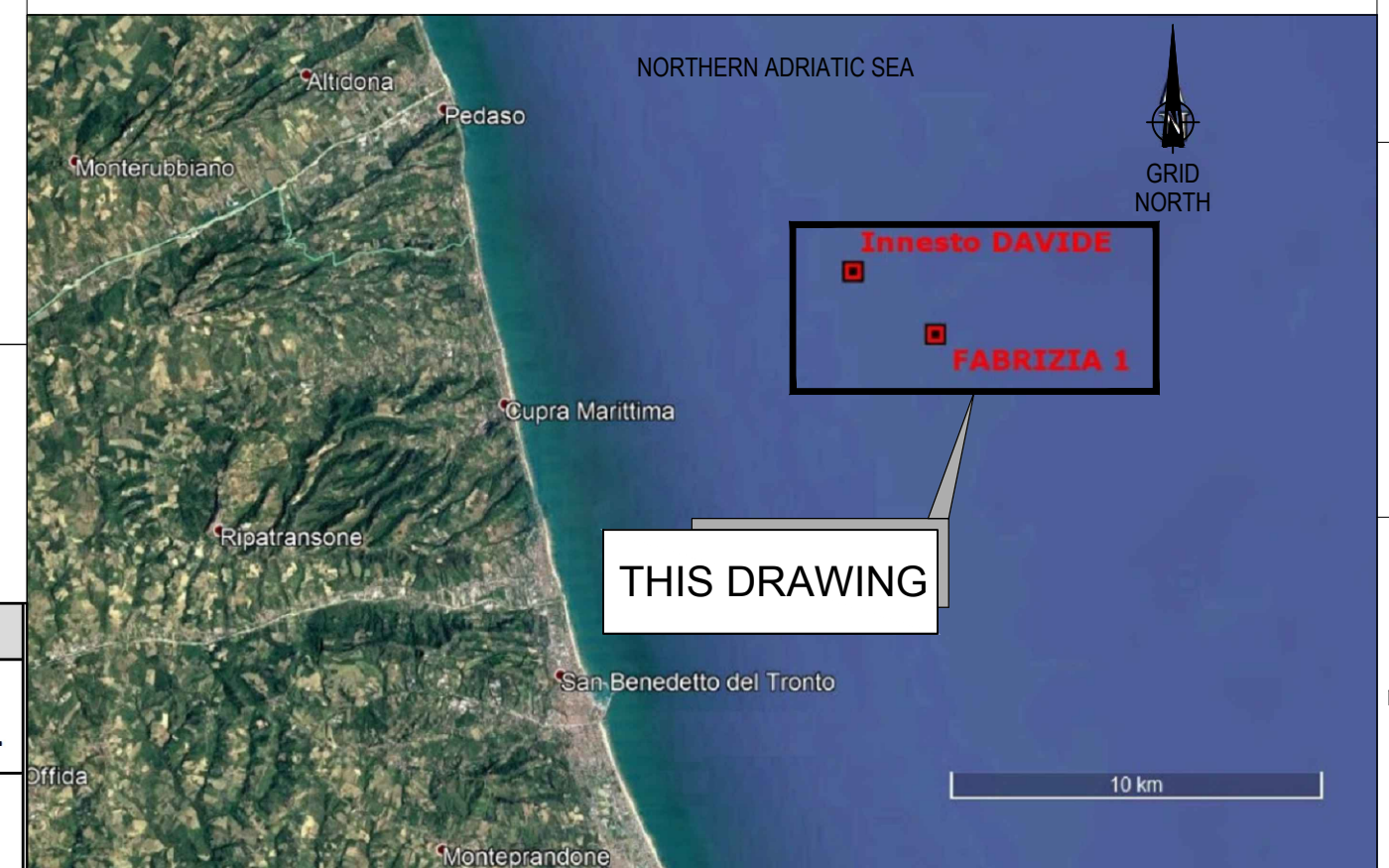
- NOTES**
- ALL DIMENSIONS ARE IN METERS UNLESS OTHERWISE STATED.
  - SHOWN PIPELINE ROUTES ARE TAKEN FROM ENI GIS SYSTEM.
  - BATHYMETRY AND SEABED MORPHOLOGY ARE TAKEN FROM "LAYOUT GENERALE" DOC. 076300SDG12104.
  - BURIAL DEPTHS OF THE PIPELINES TO BE DECOMMISSIONED ARE TAKEN FROM FABRIZIA 1 - TIE-IN PIPELINE DAVIDE-GROTTAMMARE SURVEY FINAL REPORT, IDP AM791, DELIVERY DATE 14/06/2019.
  - PIPELINES APPROACH TO FABRIZIA 1 - TIE-IN PIPELINE DAVIDE-GROTTAMMARE ARE TAKEN FROM ENI U 13.412.549 INSTALLATION ENGINEERING DOCUMENT.

**LEGEND**

	Centre of well (Eni database co-ordinates)		Exposed Pipeline
	Tie-In Structure (Eni database)		Pipeline to be decommissioned (Buried depth in meters)
	Bathymetry (referred to M.S.L.)		Buried Pipeline (Buried depth in meters)
	Kilometer Point		



Pipelines Data						
Description	Wall Thickness	Design Pressure	Material	Date of Installation	Fluid	Outside Diameter
Fabrizia 1 - Tie-In Pipeline Davide-Grottammare	6.4 mm	130 bara	API 5L-X52	1998	Water	2"
Fabrizia 1 - Tie-In Pipeline Davide-Grottammare	7.1 mm	130 bara	API 5L-X52	1998	Gas	4"



Facilities									
Description	Company	Platform Typology	Structure Typology	Water Depth	Date of Installation	Gauss Boaga Est		Roma 40	
						North	East	Latitude	Longitude
Fabrizia 1	Eni	Single	Monopod	22 m	1997	4765904	2438645	43° 02' 26.525" N	14° 00' 04.596" E
Tie-In Pipeline Davide-Grottammare	Eni	n/a	Subsea	18.87m	1997	4767661	2436491	43° 03' 22.613" N	13° 58' 28.443" N

PR-DE 01 20/12/2019	Final Issue	Project Team M. Mastar S. Sartriana M. Proverbio	Eni
PR-DE 00 29/11/2019	Issued for Comment	Project Team M. Mastar S. Sartriana M. Proverbio	Eni
Validity Status	Revision Number	Date	Description
Company Logo and Business Name	Prepared	Checked	Approved
en	Project Name DECOMMISSIONING OFFSHORE ITALIA	Company Document ID: 076300BZDC76010	Job N.
Facility and SubFacility Name DECOMMISSIONING OFFSHORE ITALIA	Scale 1:5000 @A1	Sheet of Sheets 1/1	
Document Title FABRIZIA 1 - TIE-IN PIPELINE DAVIDE - GROTTAMMARE PIPELINES ROUTE	Superseded by N.	Unit n.a.	