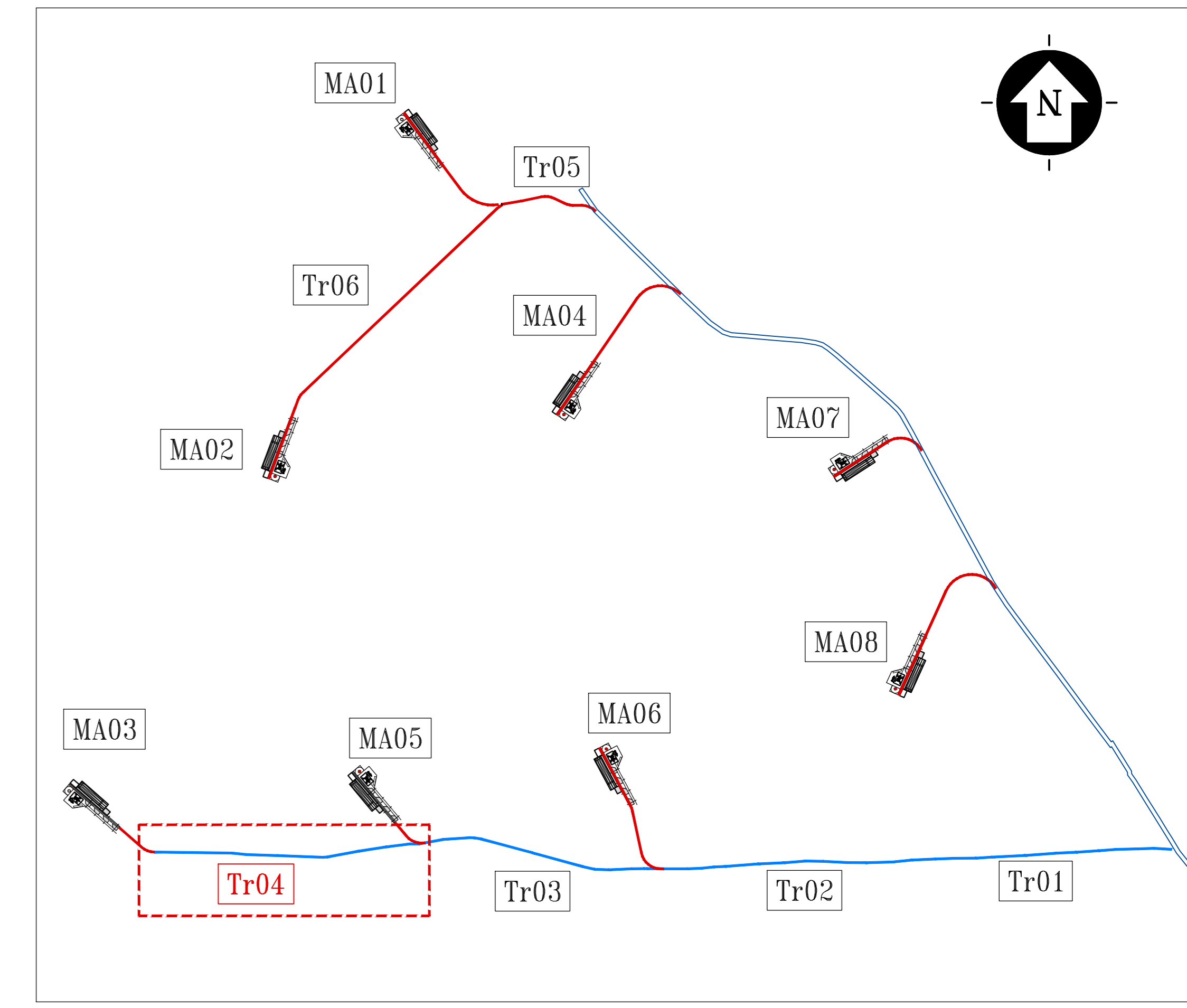
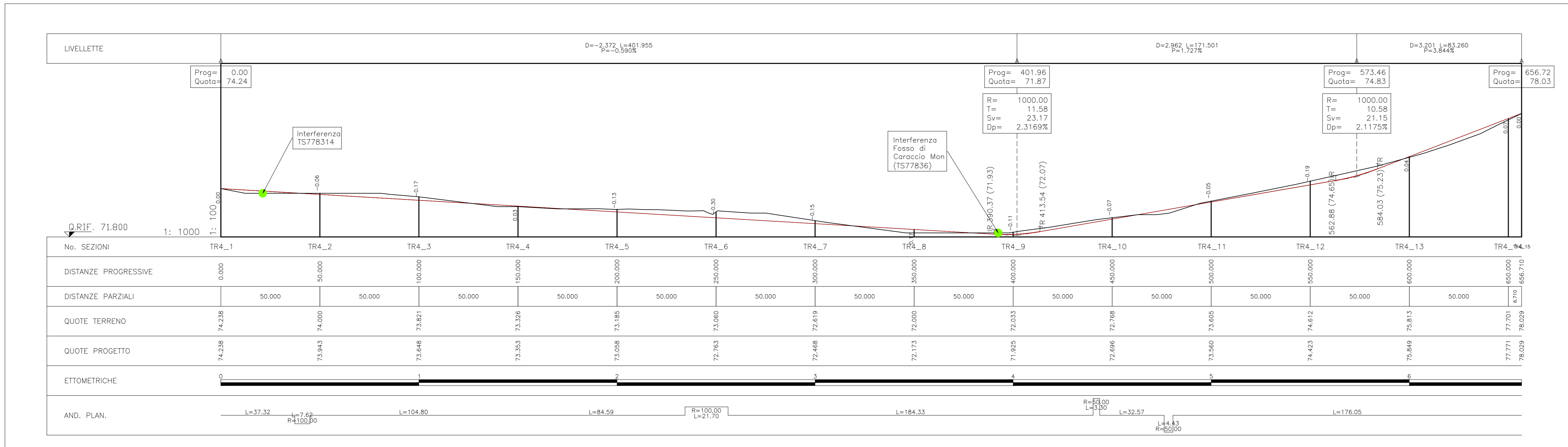


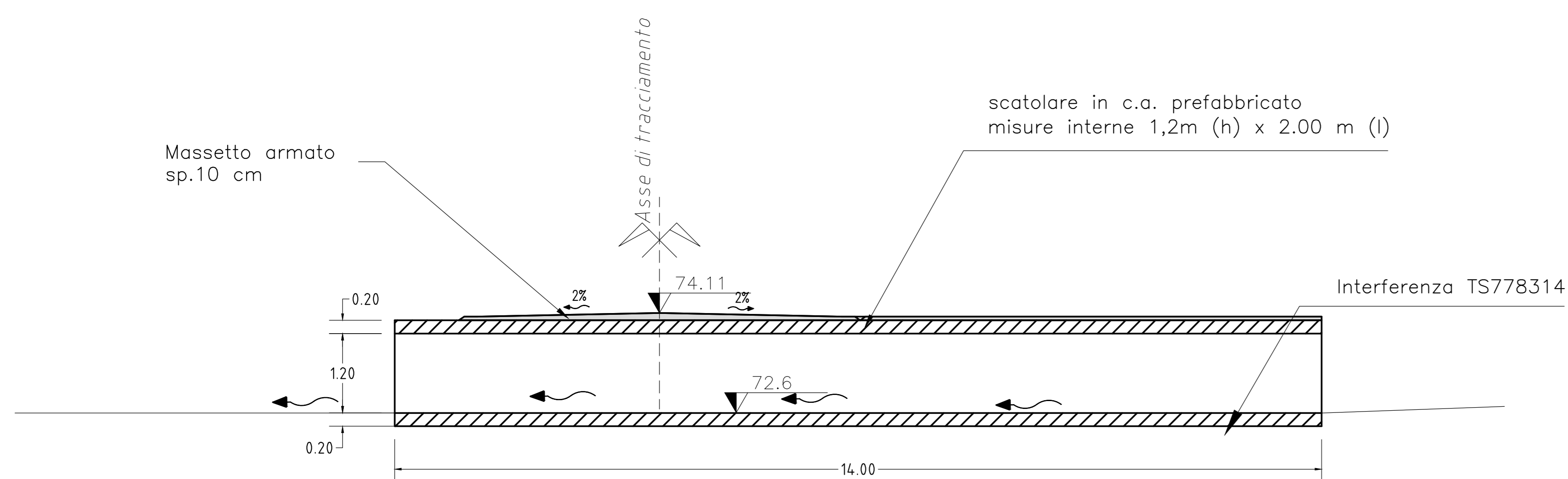
LEGENDA

● AREA DI PROGETTO



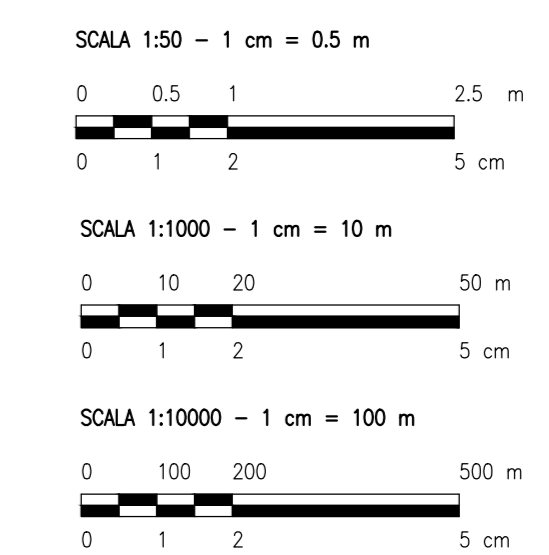
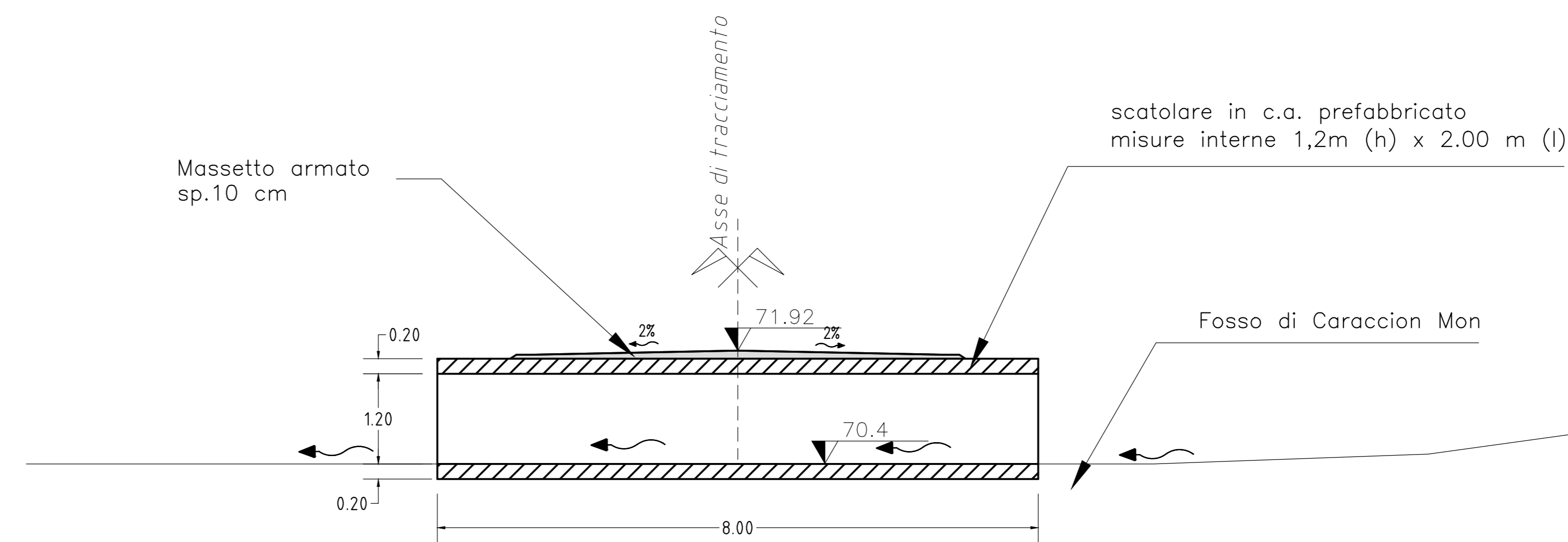
Profilo Longitudinale Tombotto TS778314

PROGRESSIVA 21.15



Profilo Longitudinale Tombotto TS77836

PROGRESSIVA 392.49



REV.	DESCRIZIONE	EL.	MA.	SC.	ES.	DATA
0						

Montana Montana Group Energy

OX2 WIND ITALY S.p.A.

ING. LAURA CONTI

PARCO EOLICO WIND ITALY 1 - POTENZA NOMINALE 48 MW

COMUNE DI MANCIANO (GR)

PROGETTO DEFINITIVO

INTERFERENZE TS778314 E TS77836

T03.01

27/05/2012