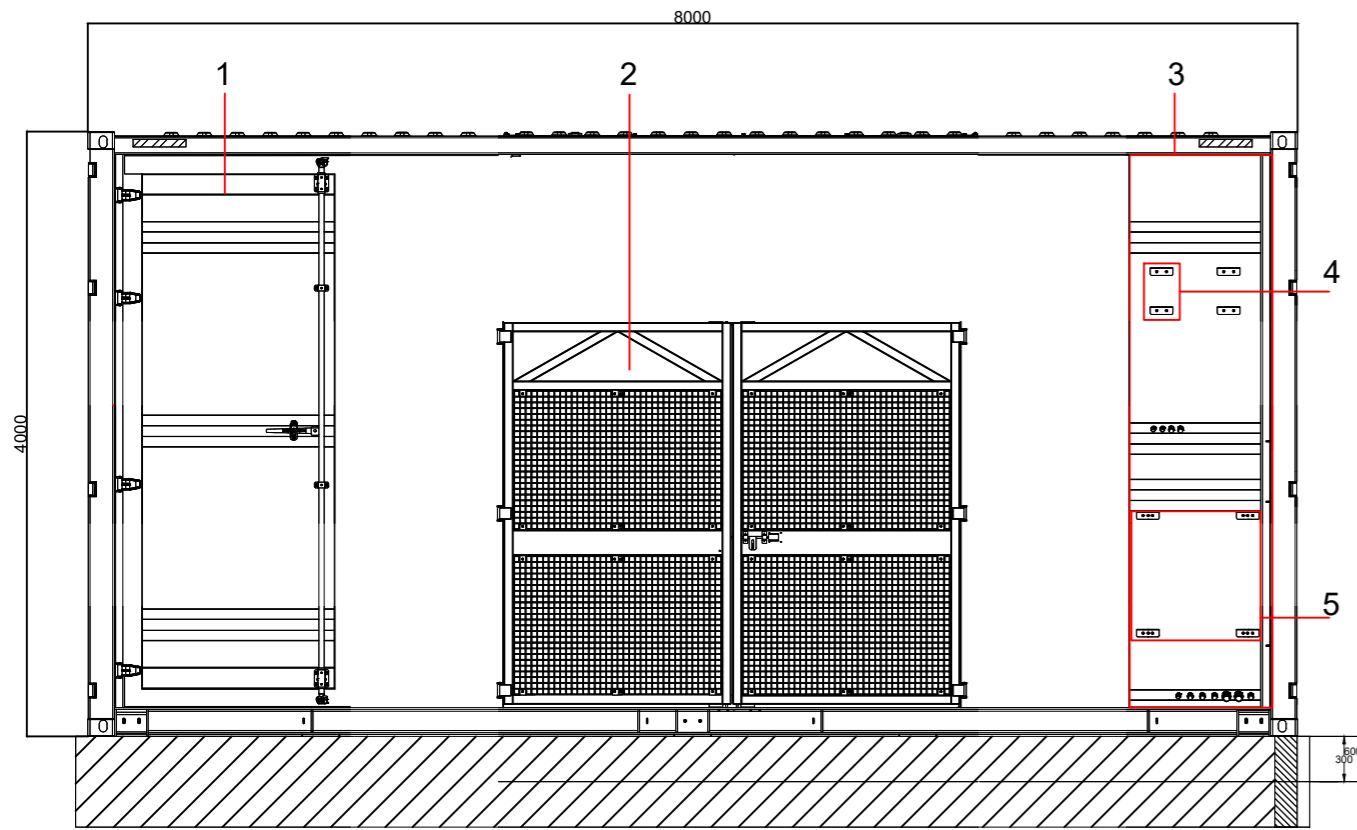


TIPOLOGICO TRASFORMATION UNIT

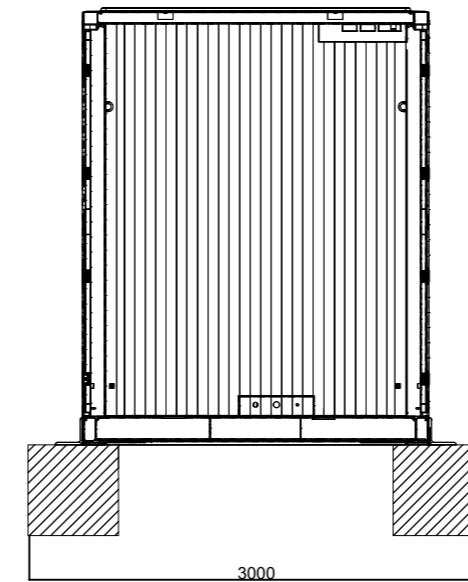
Scala 1:50

PROSPETTO FRONTALE

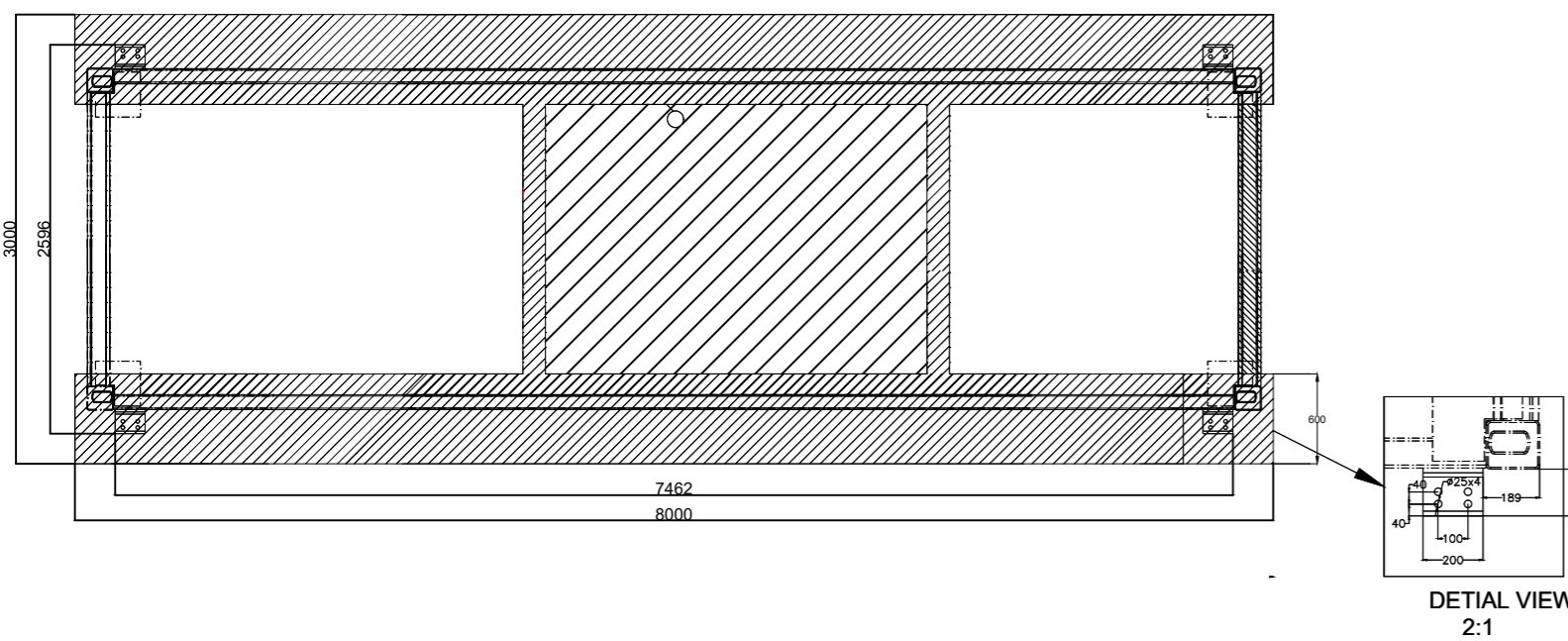


Recommended height from ground: $\geq 0.3m$
GROUND

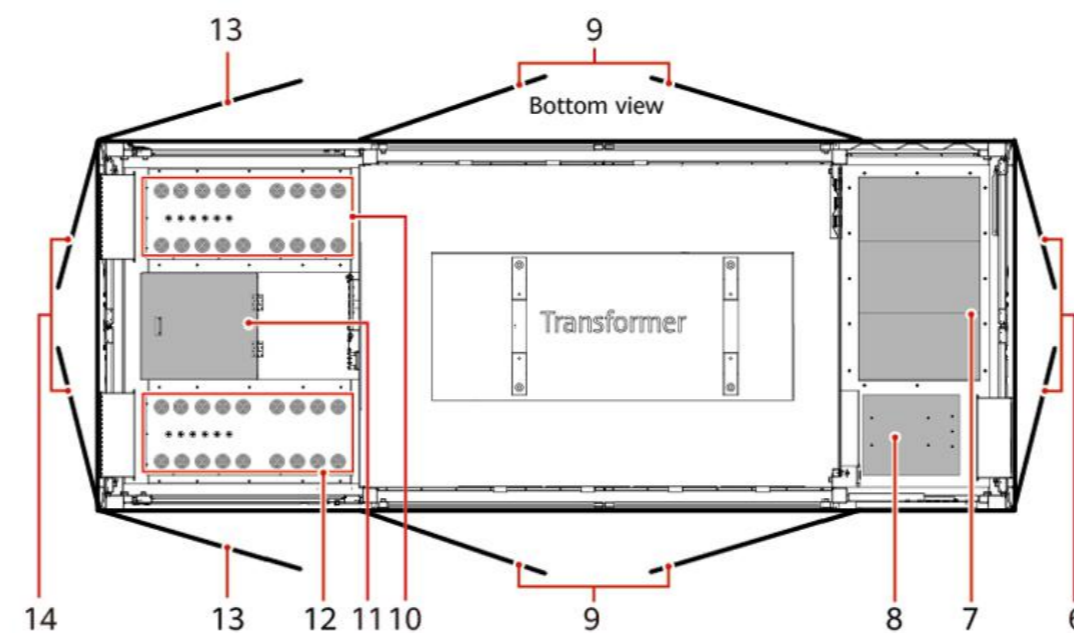
PROSPETTO LATERALE



PIANTA DALL'ALTO



VISTA DALL'ALTO



I tipologici sono da ritenersi come preliminari.

Le dimensioni non contrassegnate devono essere determinate in base alle condizioni in sito.

Nota: le misure sono espresse in millimetri

LEGENDA PIANTA CABINATO DALL'ALTO

- | | | |
|---|--|---|
| (1) Low-voltage room (LV) | (2) Transformer room (TR) | (3) Medium-voltage room (MV) |
| (4) Position for the distributed power system (uninterruptible power supply, UPS) | (5) Position for the smart array controller (SACU) | (6) Double-swing door of the MV room |
| (7) Ring main unit | (8) Auxiliary transformer | (9) Double-swing screen door for the transformer room |
| (10) AC input cable hole (LV PANEL B) | (11) Manhole entrance | (12) AC input cable hole (LV PANEL A) |
| (13) Single-swing door for the LV room | (14) Double-swing door for the LV room | |



00	11/08/2023	Emissione	L.Spaccino		
REV.	DATE	DESCRIPTION	PREPARED	CHECKED	APPROVED
CONTRACTOR'S LOGO		PROJECT:	Progetto di un Impianto Agrivoltaico della potenza complessiva di 63.232,40 kWp e relative opere di connessione alla RTN. Da realizzarsi nei comuni di Roccapalumba (PA) e Vicari (PA)		
CLIENT'S LOGO		FILE NAME:	ROC.ENG.TAV.021.00_TIPOLOGICO TRASFORMATION UNIT.DWG		
CLASSIFICATION:		FORMAT:	SCALE:	PLOT SCALE:	SHEET:
Company		A2	1:50	1:1	1 di / of 1
TITILE:		Tipologico trasformazione unit			
CLIENT VALIDATION		UTILIZATION SCOPE:			
VALIDATED BY:		CLIENT CODE			
VERIFIED BY:		Basic Design			
COLLABORATORS:		IMP	GROUP	DOC	PROGRESSIVE
		ROC ENG TAV		021	00