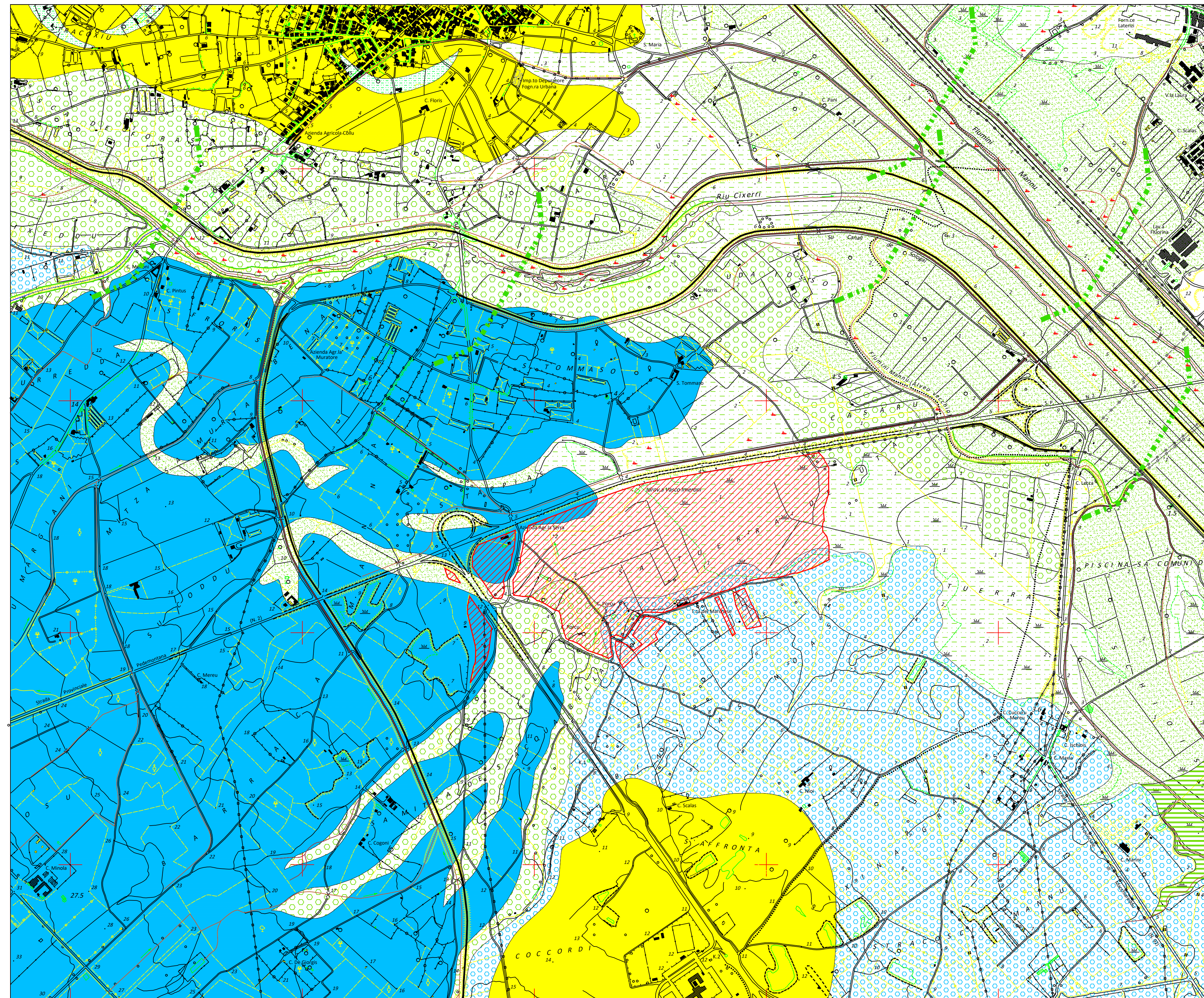


Agrisard S.r.l.

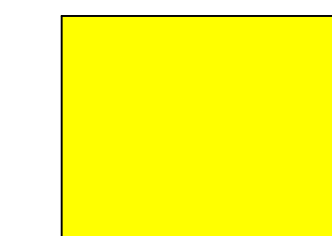
PROGETTO DI UN IMPIANTO FV 65,8028 MWp

Comuni di Uta e Assemini, Città Metropolitana di Cagliari
Loc. "Sa Tanca de su Marchesu"

CARTA GEOMORFOLOGICA sc 1:10.000

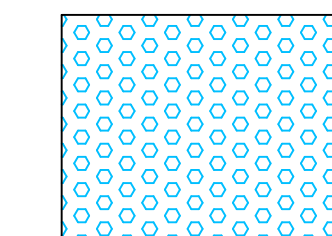


Litotipi del substrato

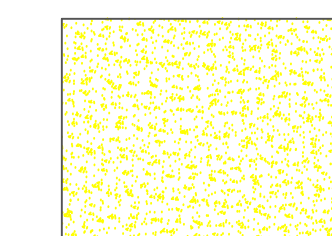


Rocce rudatiche

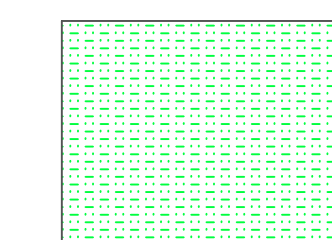
Forme e depositi fluviali



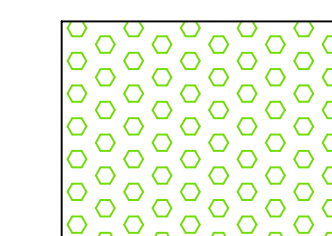
Depositi alluvionali Terrazzati: Ghiaie da grossolane a medie.



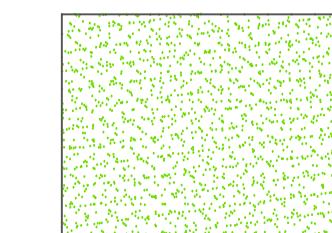
Depositi alluvionali terrazzati: Ghiaie con subordinate sabbie.



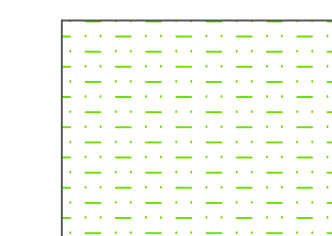
Depositi alluvionali terrazzati: Limi ed argille



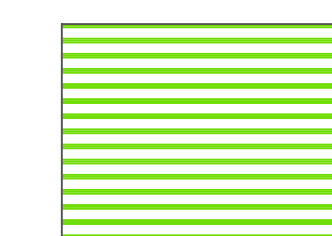
Depositi alluvionali: Ghiaie da grossolane a medie.



Depositi alluvionali: Ghiaie con subordinate sabbie.



Depositi alluvionali: Limi ed argille



Depositi lacustri. Argille



Valli a fondo piatto



Orlo di scarpata fluviale

Forme antropiche



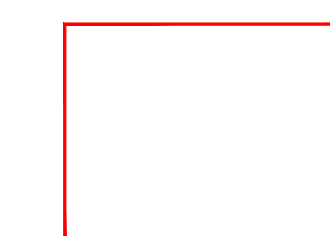
Argini artificiali



Orlo di scarpata antropica



Orlo di scarpata di cava



Impianto FV