










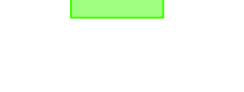
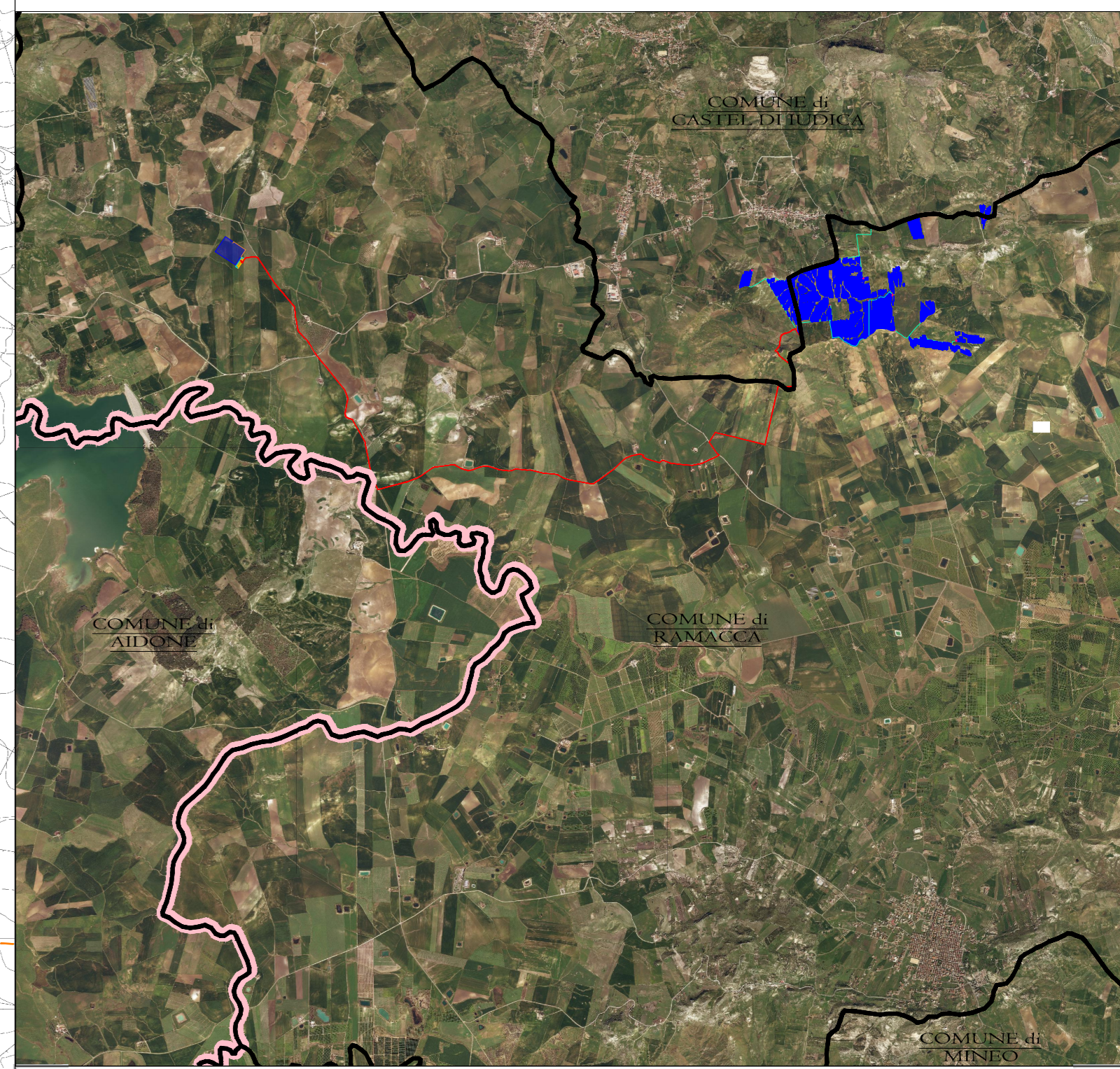
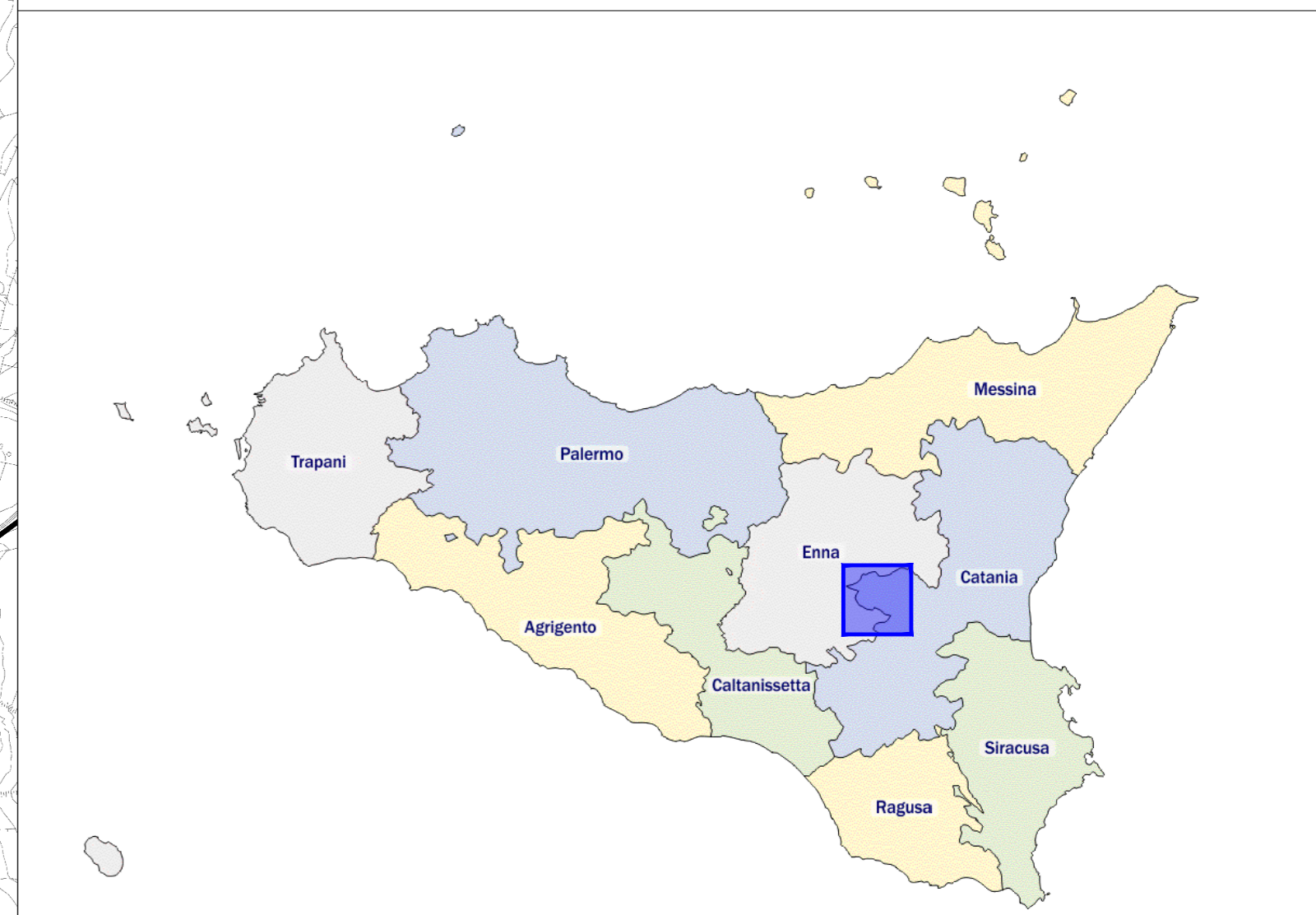
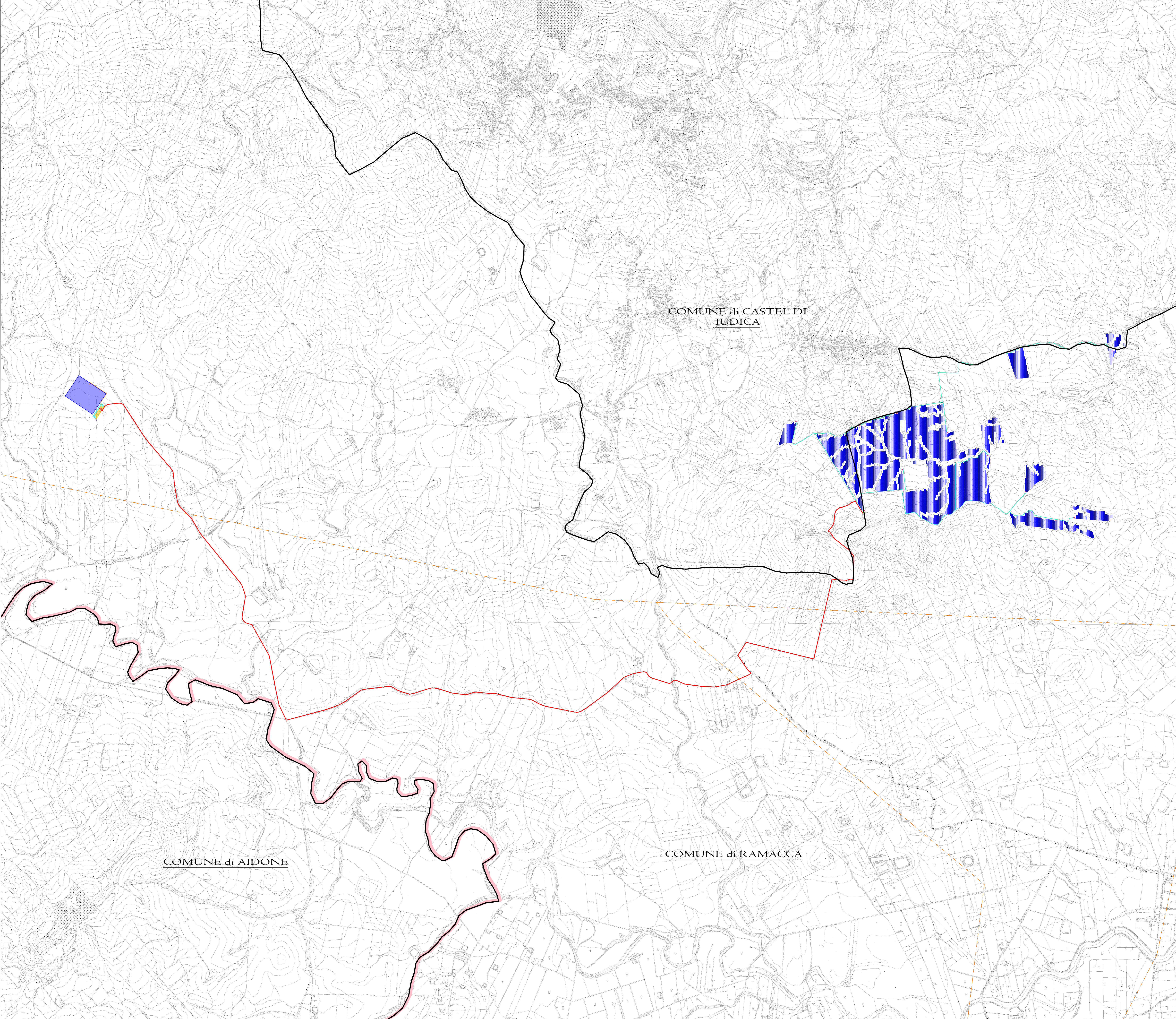


LEGENDA PARCO:

-  Area Impianto
-  Stazione Elettrica RTN
-  Stazione Utente - Area Condominio
-  Stazione Utente - Area 30/150 Kv ITS MEDORA
-  Stazione Utente - Area destinata ad altri produttori
-  Confine Comunale
-  Confine Provinciale
-  Cavidotto 150 kv
-  Cavidotto 30kv
-  Cavidotto interno
-  Cabina di Consegna
-  Cabina di Campo

LEGENDA RETI ELETTRICHE:

-  Reti Elettriche







IMPIANTO DI PRODUZIONE DI ENERGIA DA FONTE FOTOVOLTAICA POTENZA NOMINALE 85 MW

REGIONE SICILIA 	PROVINCIA di CATANIA 	COMUNE di RAMACCA Località "Contrada Balconere"  COMUNE di CASTEL DI IUDICA Località "Contrada Comuni" 
---	--	--

Scale: Formato Stampa: 1:12000 A0

PROGETTO DEFINITIVO
TAVOLA
A. 12. b. 5 PLANIMETRIA RETI ELETTRICHE

<p>Progettazione:</p>  R.S.V. Design Studio S.r.l. Via S. Maria Maddalena, 104 95021 Catania (CT) Tel. Fax: +39 095 856501 (centrali) - 856501 (uffici) - 856501 (fax)	<p>Completato:</p>  ITS Medora S.p.A. Via S. Sebastiano, 10 - 95021 Catania (CT) P.IVA: 01570790975 <p>Responsabili Progetto:</p> <p>Ing. Vassalli Quirino  Ing. Speranza Carmine Antonio </p>
--	---

Data	Motivo della revisione	Realizzato	Controllato	Approvato
08/05/2023	Prima emissione	LS	GVAS	RSV

Il presente elaborato è di proprietà di R.S.V. Design Studio S.r.l. Non è consentito riprodurlo o comunque utilizzarlo senza autorizzazione scritta di R.S.V. Design Studio S.r.l.