

---

PROGETTO PER LA REALIZZAZIONE DI UN IMPIANTO PER LA PRODUZIONE DI ENERGIA  
MEDIANTE LO SFRUTTAMENTO DEL VENTO NEI TERRITORI COMUNALI  
DI CANINO E MONTALTO DI CASTRO (VT) LOC. SUGARELLA  
POTENZA NOMINALE 93,6 MW

**PROGETTO DEFINITIVO - SIA**

---

PROGETTAZIONE E SIA

ing. Fabio PACCAPELO

ing. Andrea ANGELINI

ing. Antonella Laura GIORDANO

ing. Francesca SACCAROLA

COLLABORATORI

dr.ssa Anastasia AGNOLI

ing. Giulia MONTRONE

STUDI SPECIALISTICI

IMPIANTI ELETTRICI

ing. Roberto DI MONTE

GEOLOGIA

geol. Matteo DI CARLO

ACUSTICA

ing. Antonio FALCONE

NATURA E BIODIVERSITÀ

BIOPHILIA - dr. Gianni PALUMBO dr. Michele BUX

STUDIO PEDO-AGRONOMICO

dr. Gianfranco GIUFFRIDA

ARCHEOLOGIA

ARSARCHEO - dr. archeol. Andrea RICCHIONI dr. archeol. Gabriele MONASTERO

INTERVENTI DI COMPENSAZIONE E VALORIZZAZIONE

arch. Gaetano FORNARELLI

arch. Andrea GIUFFRIDA

---

**SIA.ES. STUDI SPECIALISTICI**
















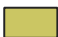












REV. DATA DESCRIZIONE

**ES.3.6 Mappa previsionale del rumore prodotto dagli  
aerogeneratori (solo componente sonora eolica)**

REV.	DATA	DESCRIZIONE

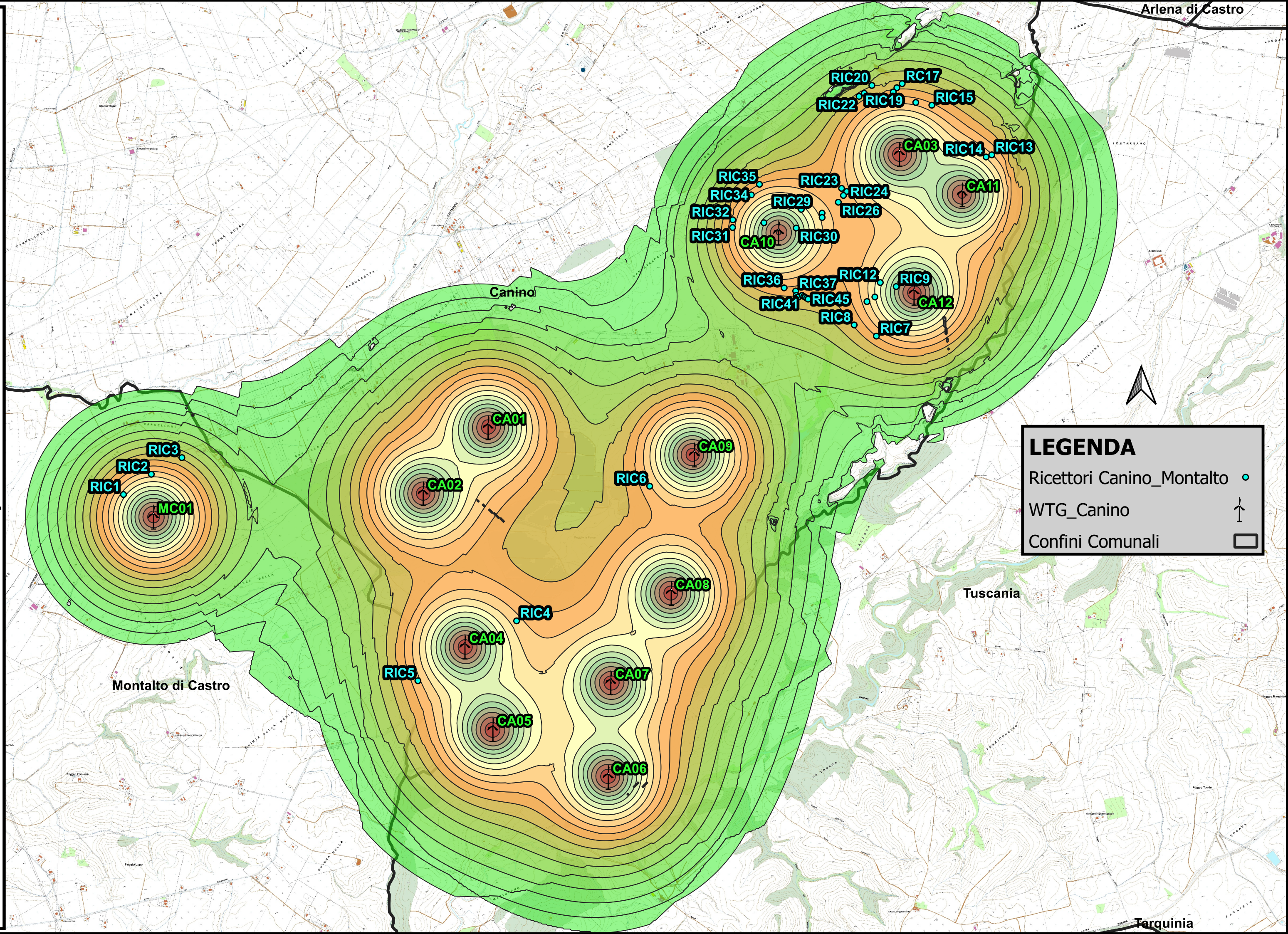


## LEGENDA CURVE DI ISOLIVELLO

20dB - 21dB		35dB - 36dB	
21dB - 22dB		36dB - 37dB	
22dB - 23dB		37dB - 38dB	
23dB - 24dB		38dB - 39dB	
24dB - 25dB		39dB - 40dB	
25dB - 26dB		40dB - 41dB	
26dB - 27dB		41dB - 42dB	
27dB - 28dB		42dB - 43dB	
28dB - 29dB		43dB - 44dB	
29dB - 30dB		44dB - 45dB	
30dB - 31dB		45dB - 46dB	
31dB - 32dB		46dB - 47dB	
32dB - 33dB		47dB - 48dB	
33dB - 34dB		48dB - 49dB	
34dB - 35dB		49dB - 50dB	
		50dB - 51dB	
		51dB - 52dB	



Simulazione con vento = 3m/s ad altezza mozzo - Scala 1:25000

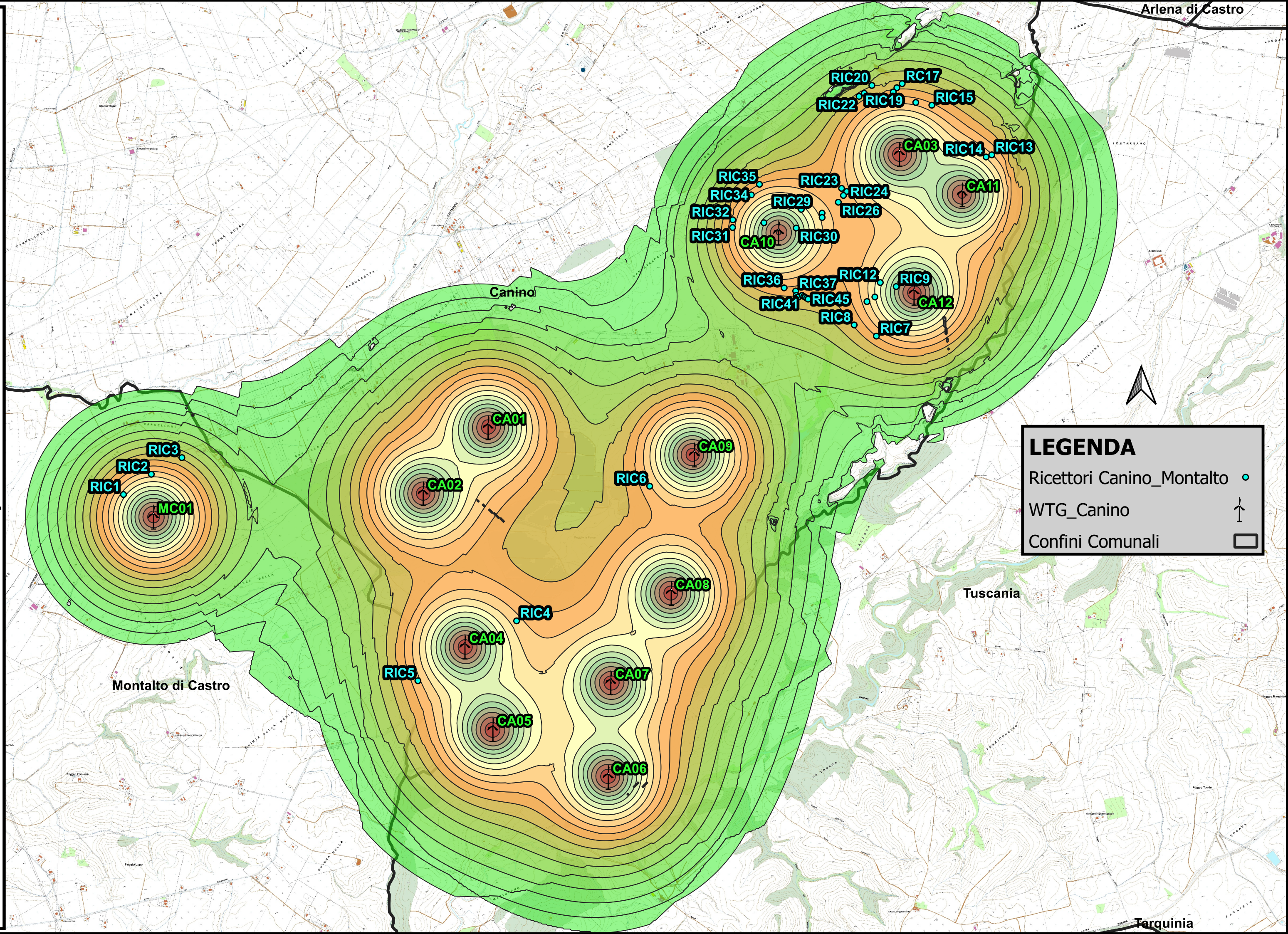


**LEGENDA**

- Ricettori Canino\_Montalto ●
- WTG\_Canino ↑
- Confini Comunali □



Simulazione con vento = 4m/s ad altezza mozzo - Scala 1:25000

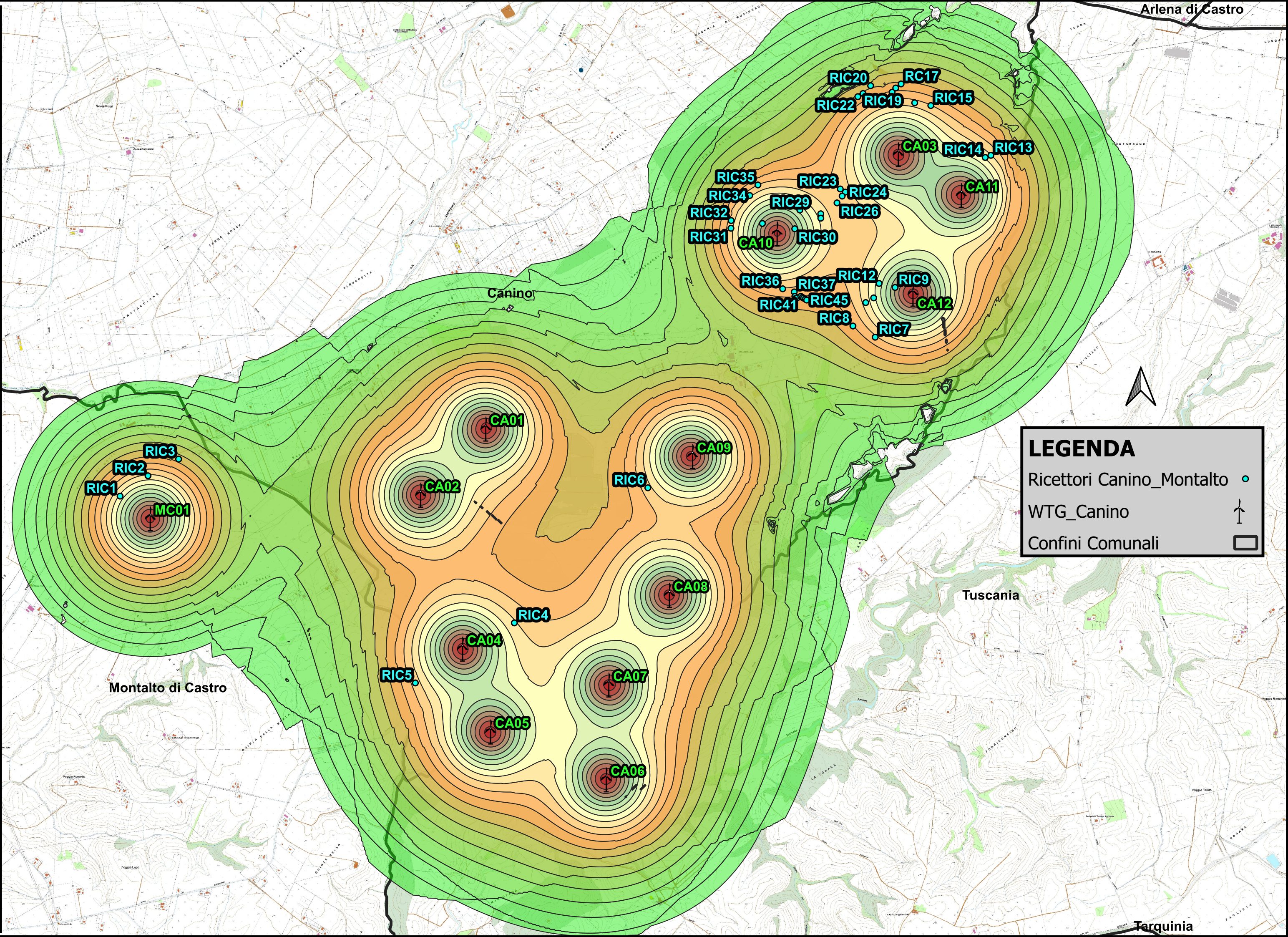


**LEGENDA**

- Ricettori Canino\_Montalto ●
- WTG\_Canino ↑
- Confini Comunali □



Simulazione con vento = 5m/s ad altezza mozzo - Scala 1:25000

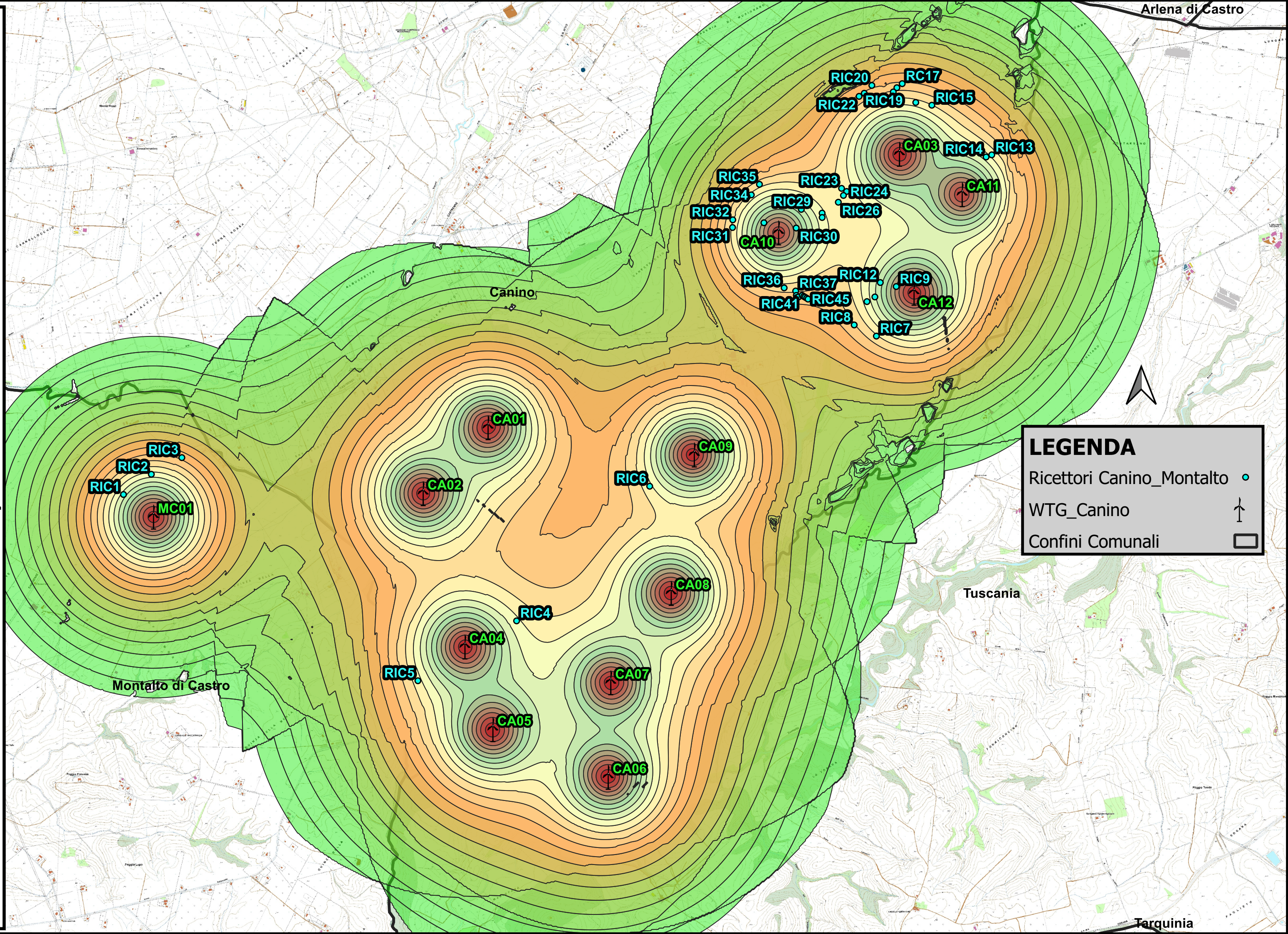


**LEGENDA**

- Ricettori Canino\_Montalto ●
- WTG\_Canino ↑
- Confini Comunali □



Simulazione con vento = 6m/s ad altezza mozzo - Scala 1:25000

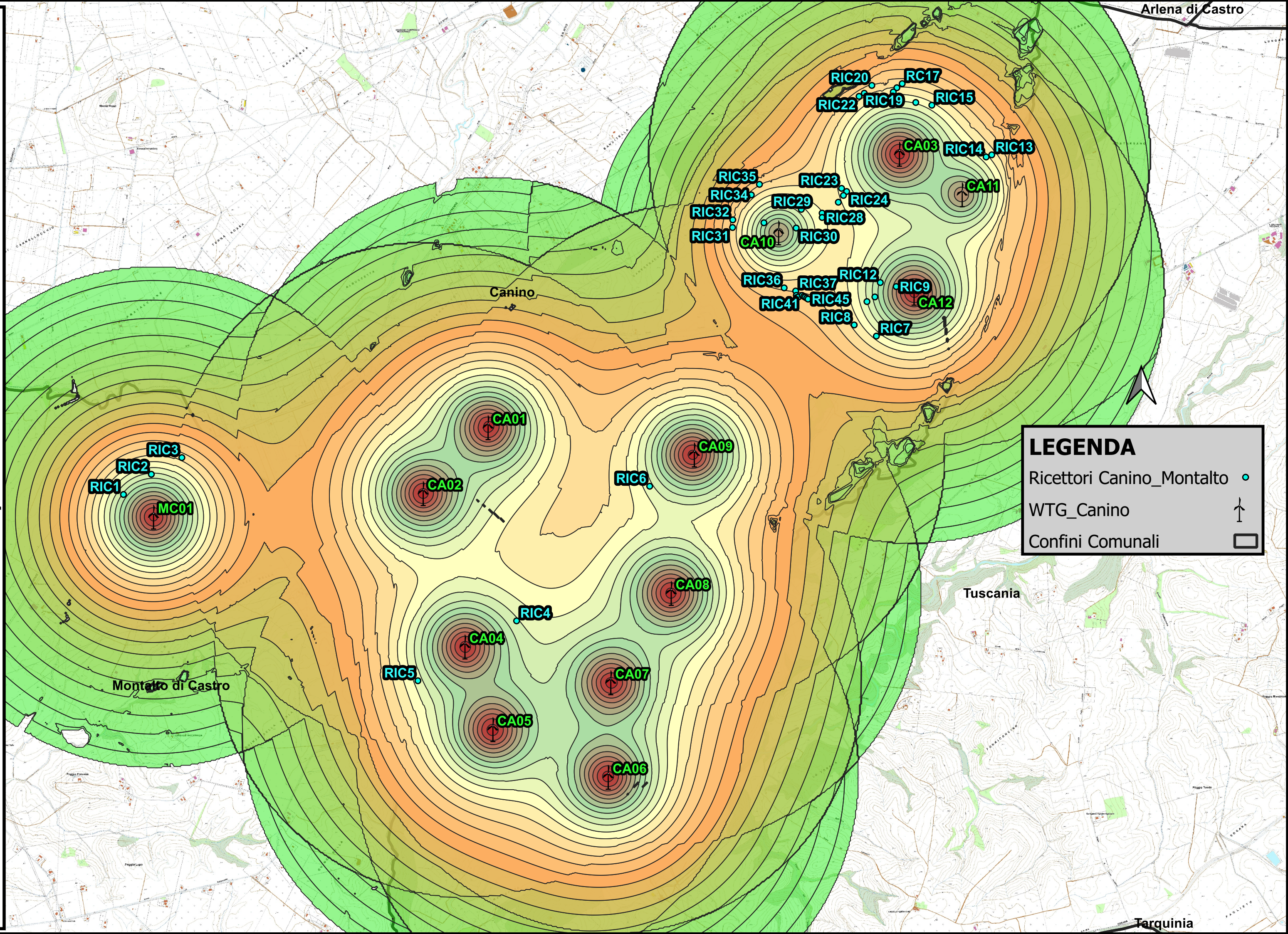


**LEGENDA**

- Ricettori Canino\_Montalto ●
- WTG\_Canino ↑
- Confini Comunali □



Simulazione con vento = 7m/s ad altezza mozzo - Scala 1:25000

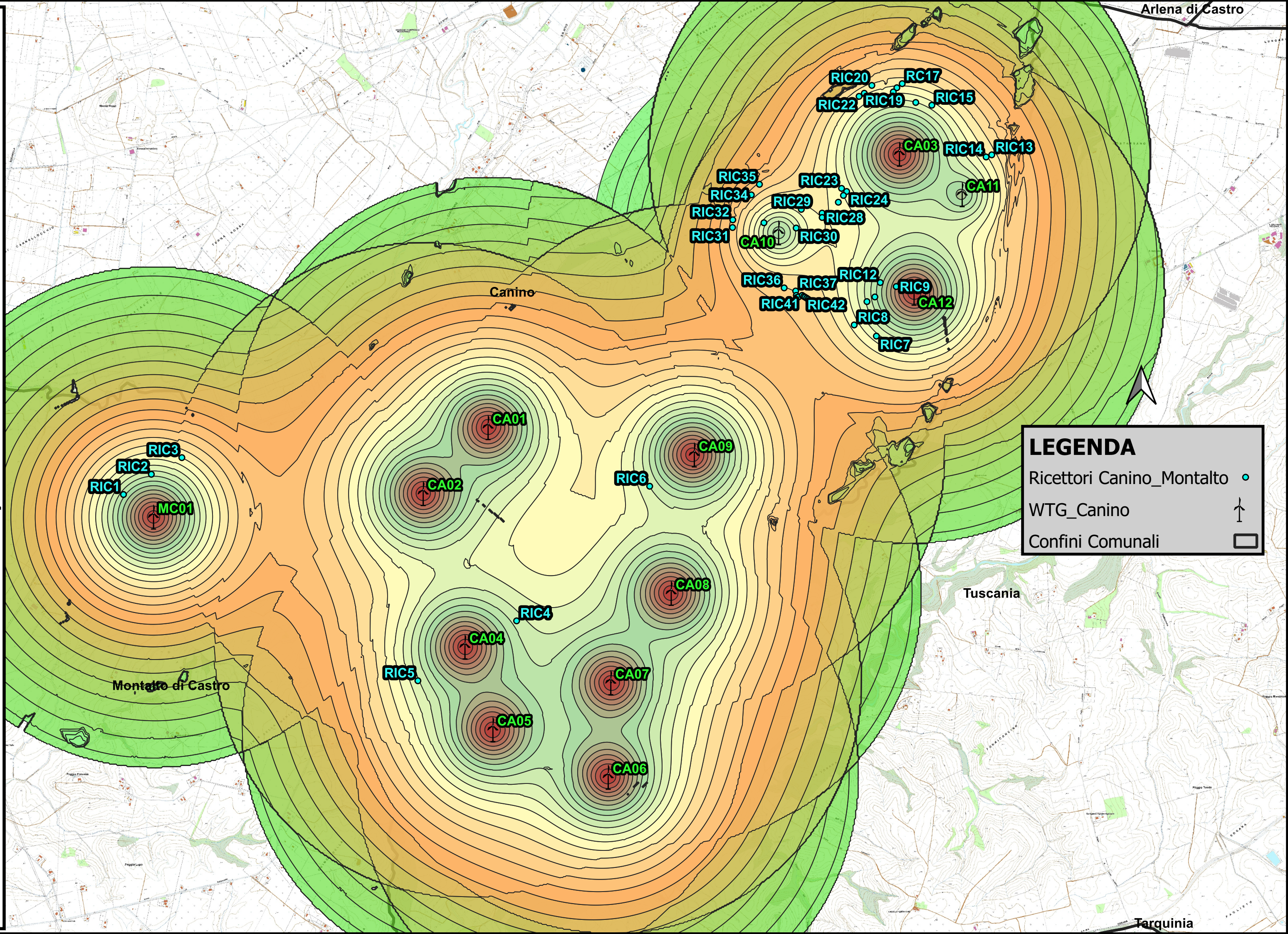


**LEGENDA**

- Ricettori Canino\_Montalto
- WTG\_Canino
- Confini Comunali



Simulazione con vento = 8m/s ad altezza mozzo - Scala 1:25000

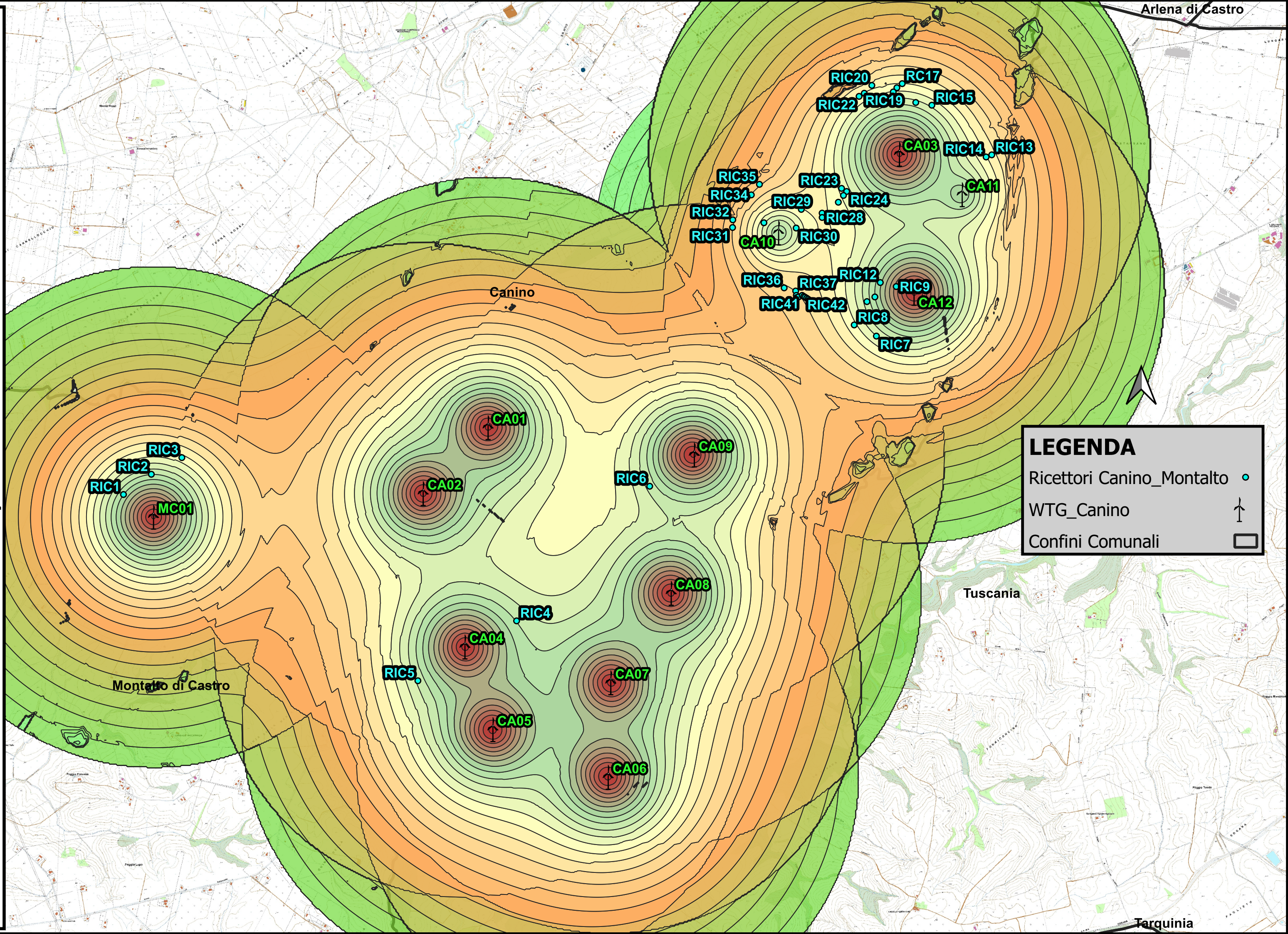


**LEGENDA**

- Ricettori Canino\_Montalto ●
- WTG\_Canino ↑
- Confini Comunali □



Simulazione con vento = 9m/s ad altezza mozzo - Scala 1:25000



**LEGENDA**

- Ricettori Canino\_Montalto ●
- WTG\_Canino ⊕
- Confini Comunali □