

	PROGETTISTA  <i>Tecnologia Ricerca Rischi</i>	COMMESSA	UNITA' -
	LOCALITA' REGIONE LIGURIA	DIS-MEC-B-15012	
	PROGETTO / IMPIANTO FSRU Alto Tirreno e Collegamento alla Rete Nazionale Gasdotti		Rev. 0

Rif. TRR: 72438

**EMERGENZA GAS
INCREMENTO DI CAPACITÀ DI RIGASSIFICAZIONE (DL 17.05.2022, n. 50)**

FSRU Alto Tirreno e Collegamento alla Rete Nazionale Gasdotti

**Rapporto Preliminare di Sicurezza
per la fase di Nulla Osta di Fattibilità (NOF)
ai sensi del D.Lgs. 105/15**

**Allegato D.8.1
Planimetria Antincendio Terminale**

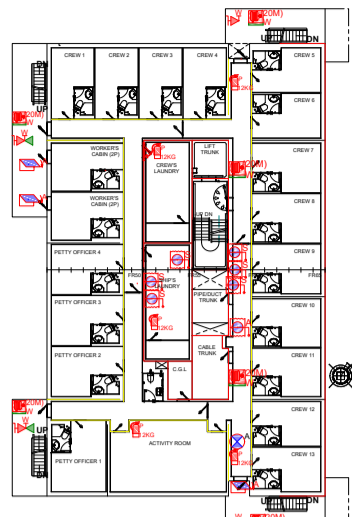
0	Emissione	TRR	G.Romano	G. Lanza	Giugno 2023
Rev.	Descrizione	Elaborato	Verificato	Approvato	Data

FOR HN 2056 "GOLAR TUNDRA"

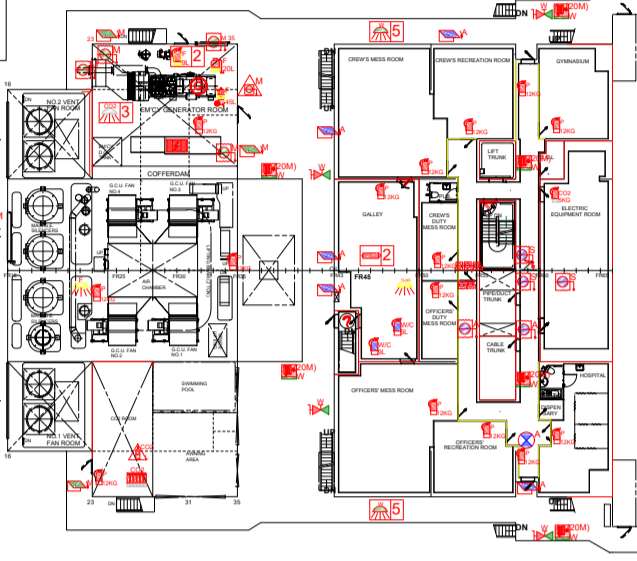
PRINCIPAL DIMENSIONS

LENGTH O.A.	262.0 M.
LENGTH B.P.	251.0 M.
BREADTH MOULDED	49.0 M.
DEPTH MOULDED	28.0 M.
DRAUGHT DESIGNED	13.0 M.
DRAUGHT SQUARE LOAD	13.0 M.
DRAUGHT SCANTLING	13.0 M.
COMPLEMENT	38 persons plus 15 reserves
CALL SIGN	VY022
IMO NO.	965806
SHIP NAME	GOLAR TUNDRA

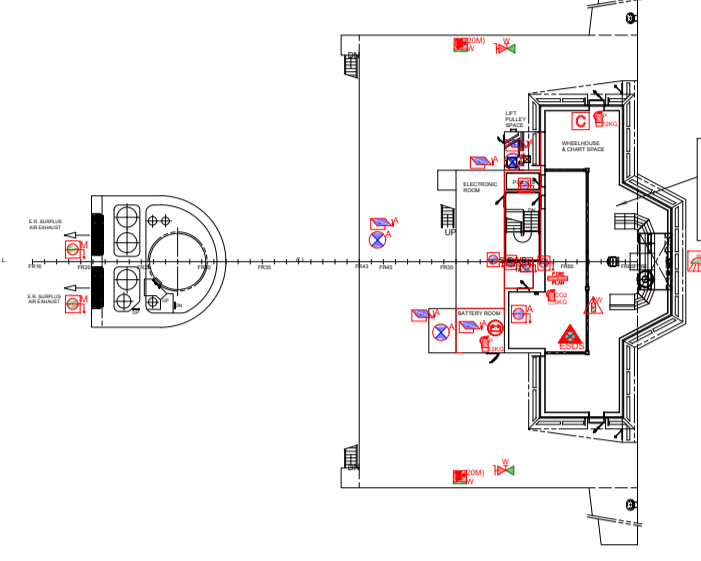
ACC. B-DECK



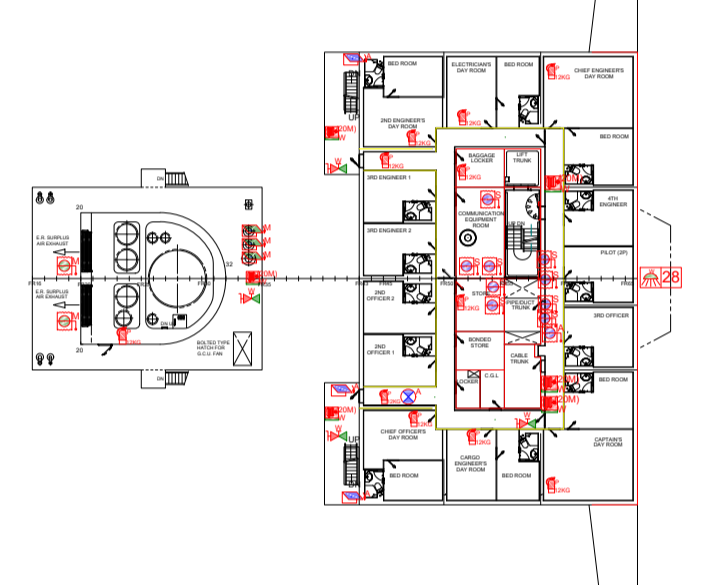
ACC. A-DECK



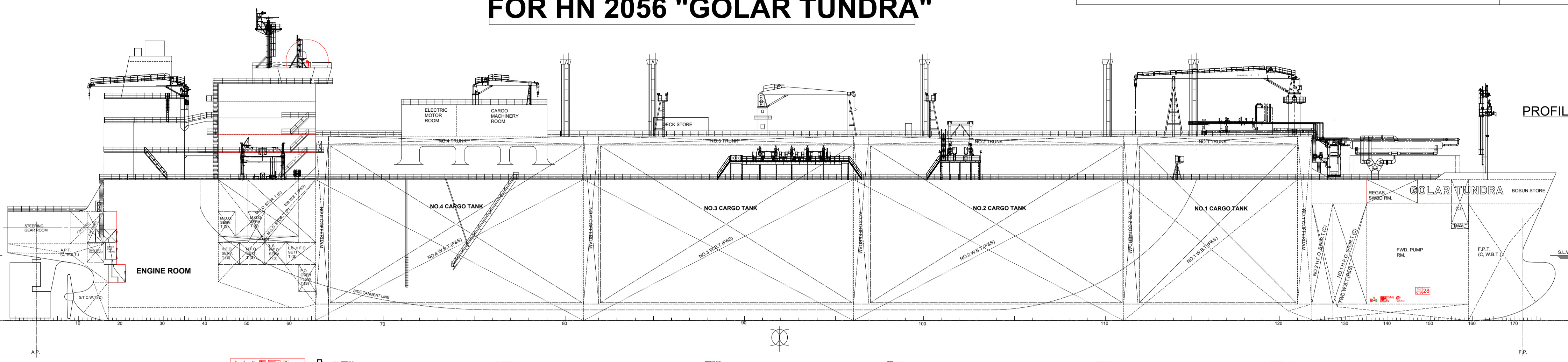
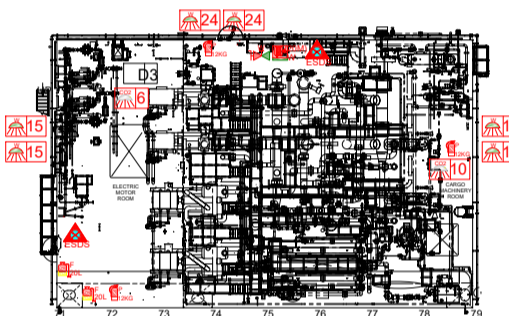
NAV. BRI-DECK



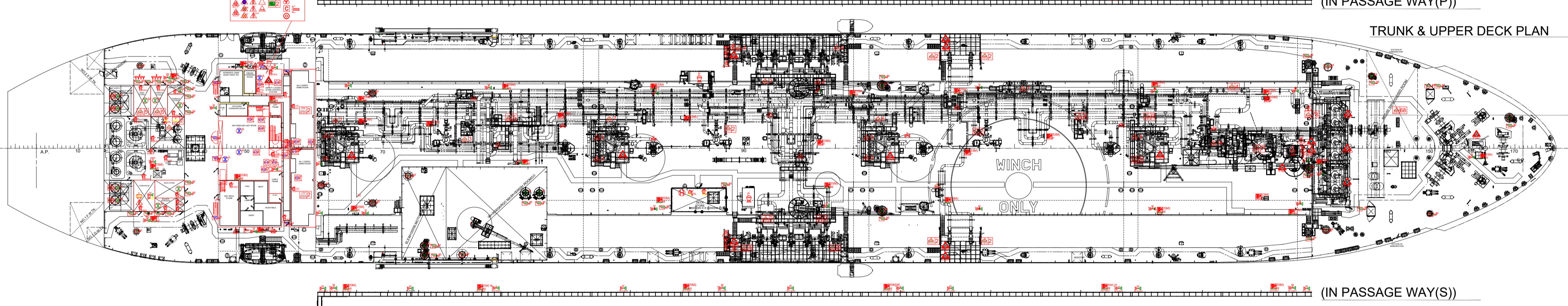
ACC. D-DECK



EL. MOTOR & CARGO MACH. RM PLAN



PROFILE

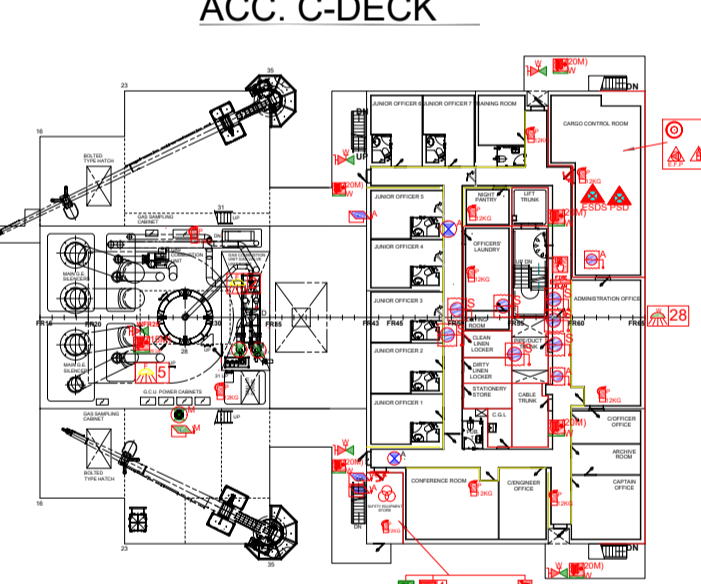


(IN PASSAGE WAY(P))

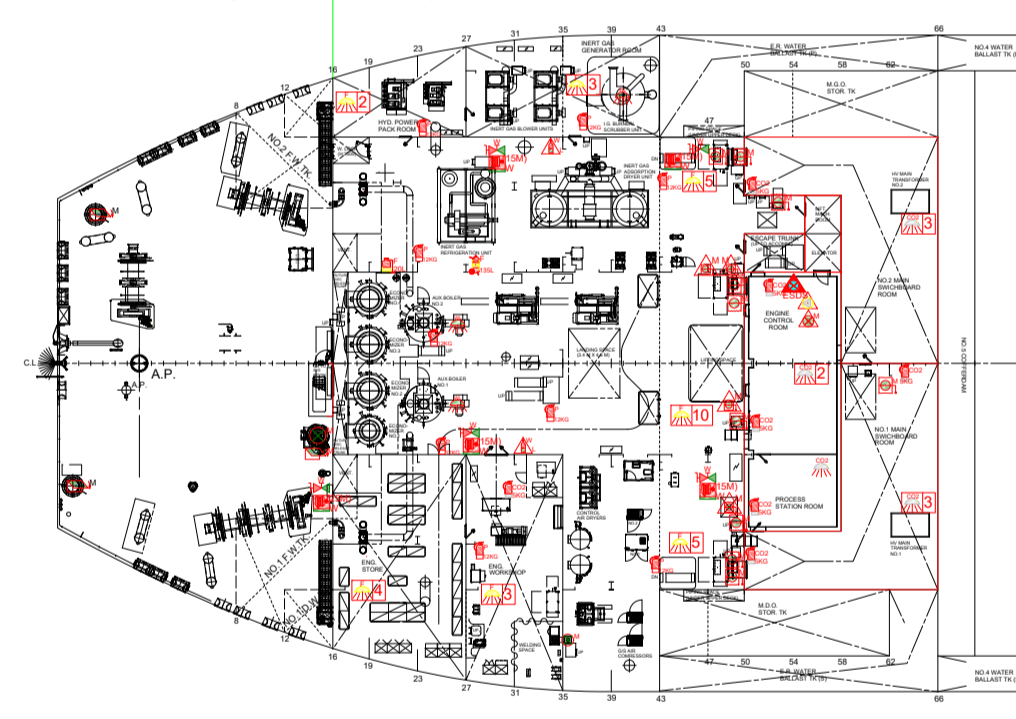
TRUNK & UPPER DECK PLAN

(IN PASSAGE WAY(S))

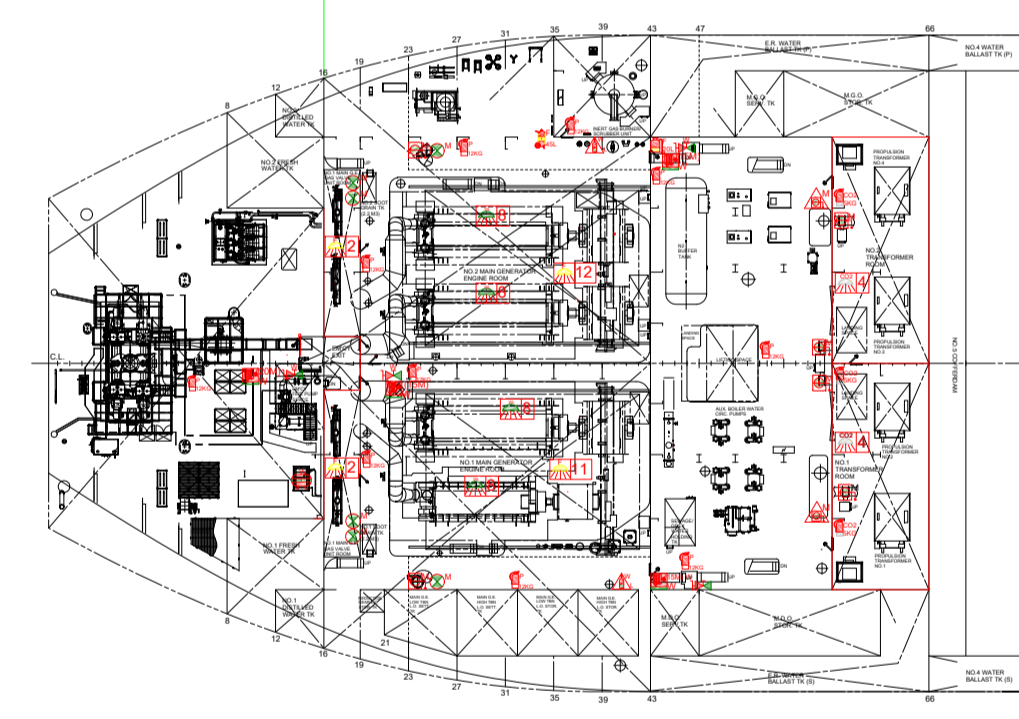
AFT. SUNKEN DECK



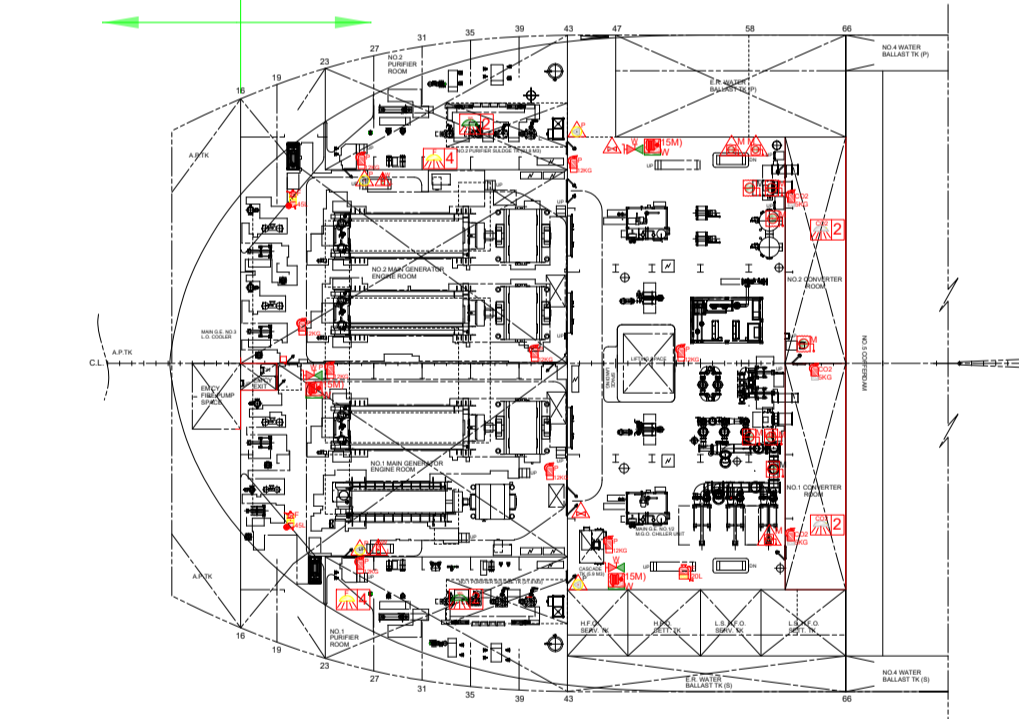
E/R 2ND DECK



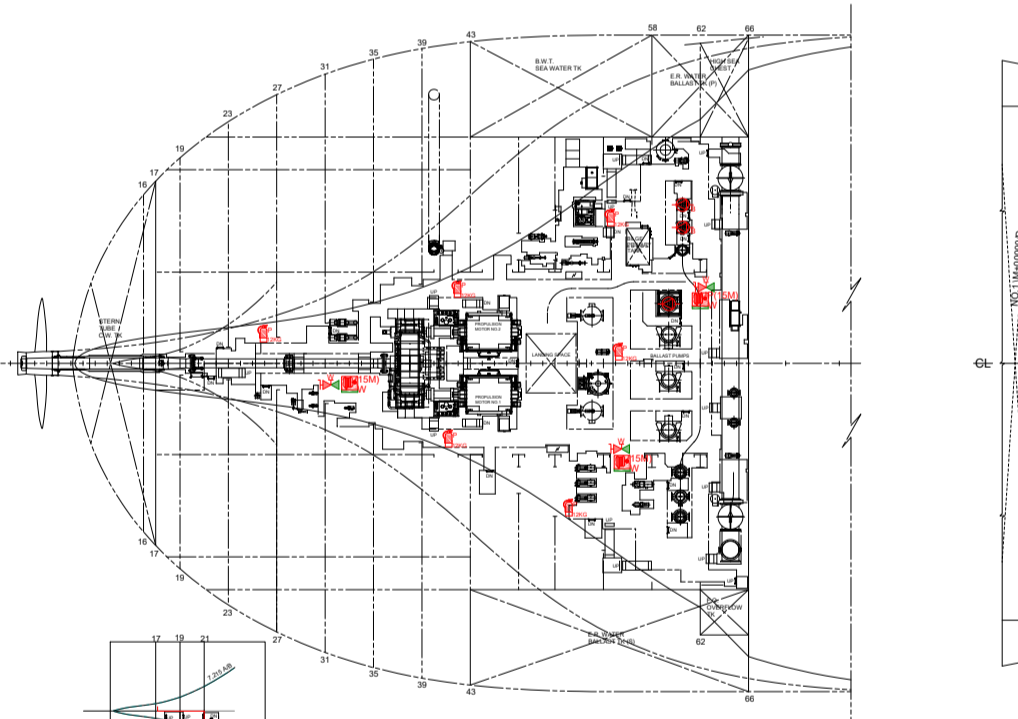
S/G ROOM



E/R 3RD DECK



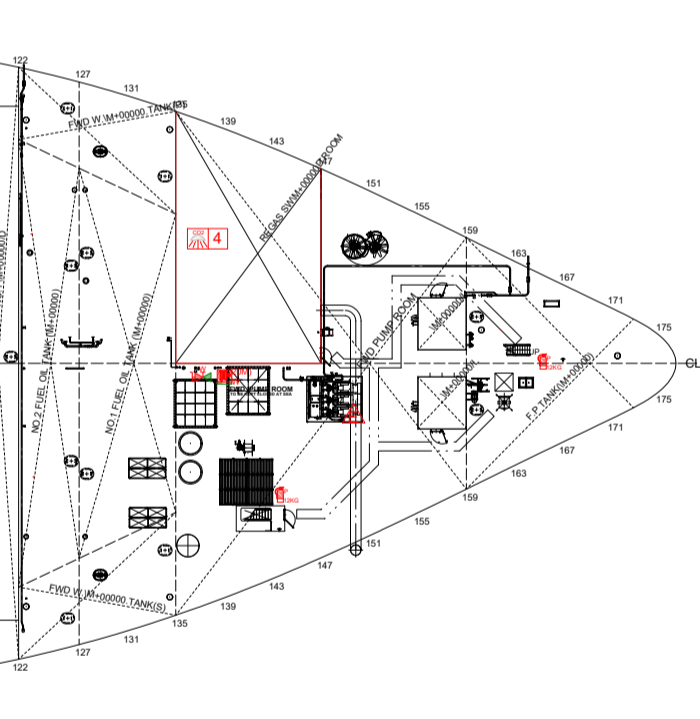
S/G ROOM (4TH DECK LEVEL)



E/R 4TH DECK

E/R FLOOR DECK

BOSUN STORE



MECHANICAL VENTILATION FAN LIST

SYMBOL NO.	CAPACITY	PURPOSE	QTY	LOCATION
1	25.00	NO.1 AIR	1	1
2	15.00	NO.2 AIR	1	1
3	15.00	NO.3 AIR	1	1
4	15.00	NO.4 AIR	1	1
5	15.00	NO.5 AIR	1	1
6	15.00	NO.6 AIR	1	1
7	15.00	NO.7 AIR	1	1
8	15.00	NO.8 AIR	1	1
9	15.00	NO.9 AIR	1	1
10	15.00	NO.10 AIR	1	1
11	15.00	NO.11 AIR	1	1
12	15.00	NO.12 AIR	1	1
13	15.00	NO.13 AIR	1	1
14	15.00	NO.14 AIR	1	1
15	15.00	NO.15 AIR	1	1
16	15.00	NO.16 AIR	1	1
17	15.00	NO.17 AIR	1	1
18	15.00	NO.18 AIR	1	1
19	15.00	NO.19 AIR	1	1
20	15.00	NO.20 AIR	1	1
21	15.00	NO.21 AIR	1	1
22	15.00	NO.22 AIR	1	1
23	15.00	NO.23 AIR	1	1
24	15.00	NO.24 AIR	1	1
25	15.00	NO.25 AIR	1	1
26	15.00	NO.26 AIR	1	1
27	15.00	NO.27 AIR	1	1
28	15.00	NO.28 AIR	1	1
29	15.00	NO.29 AIR	1	1
30	15.00	NO.30 AIR	1	1
31	15.00	NO.31 AIR	1	1
32	15.00	NO.32 AIR	1	1
33	15.00	NO.33 AIR	1	1
34	15.00	NO.34 AIR	1	1
35	15.00	NO.35 AIR	1	1
36	15.00	NO.36 AIR	1	1
37	15.00	NO.37 AIR	1	1
38	15.00	NO.38 AIR	1	1
39	15.00	NO.39 AIR	1	1
40	15.00	NO.40 AIR	1	1

FIRE & SMOKE DAMPER LIST

SYMBOL NO.	PURPOSE	QTY	LOCATION
1	NO.1 DAMPER	1	1
2	NO.2 DAMPER	1	1
3	NO.3 DAMPER	1	1
4	NO.4 DAMPER	1	1
5	NO.5 DAMPER	1	1
6	NO.6 DAMPER	1	1
7	NO.7 DAMPER	1	1
8	NO.8 DAMPER	1	1
9	NO.9 DAMPER	1	1
10	NO.10 DAMPER	1	1
11	NO.11 DAMPER	1	1
12	NO.12 DAMPER	1	1
13	NO.13 DAMPER	1	1
14	NO.14 DAMPER	1	1
15	NO.15 DAMPER	1	1
16	NO.16 DAMPER	1	1
17	NO.17 DAMPER	1	1
18	NO.18 DAMPER	1	1
19	NO.19 DAMPER	1	1
20	NO.20 DAMPER	1	1
21	NO.21 DAMPER	1	1
22	NO.22 DAMPER	1	1
23	NO.23 DAMPER	1	1
24	NO.24 DAMPER	1	1
25	NO.25 DAMPER	1	1
26	NO.26 DAMPER	1	1
27	NO.27 DAMPER	1	1
28	NO.28 DAMPER	1	1
29	NO.29 DAMPER	1	1
30	NO.30 DAMPER	1	1
31	NO.31 DAMPER	1	1
32	NO.32 DAMPER	1	1
33	NO.33 DAMPER	1	1
34	NO.34 DAMPER	1	1
35	NO.35 DAMPER	1	1
36	NO.36 DAMPER	1	1
37	NO.37 DAMPER	1	1
38	NO.38 DAMPER	1	1
39	NO.39 DAMPER	1	1
40	NO.40 DAMPER	1	1

LIST OF FIRE CONTROL & SAFETY PLAN

SYMBOL	DESCRIPTION	DECK																TOTAL							
		NO.1	NO.2	NO.3	NO.4	NO.5	NO.6	NO.7	NO.8	NO.9	NO.10	NO.11	NO.12	NO.13	NO.14	NO.15									
1	REMOTE CONTROL FOR EMERGENCY FIREWATER PUMP	1							1	1						3									
2	REMOTE CONTROL FOR BILGE FIRE & GS PUMPS (NO.1&2)	1							1							2									
3	REMOTE CONTROL FOR WATER GRAB PUMP	1							1							2									
4	FOA (LO PUMPS) REMOTE SHUT-OFF (ES1&2)	1							1							3									
5	EMCY SHUT DOWN FOR PURIFIER	1							4							4									
6	REMOTE CONTROL FOR BILGE FIRE & GS PUMPS (NO.3&4)	1							1							2									
7	REMOTE CONTROL FOR WATER GRAB PUMP	1							1							2									
8	FOA (LO PUMPS) REMOTE SHUT-OFF (ES3&4)	1							1							3									
9	EMCY SHUT DOWN SWITCH	1							2							2									
10	REMOTE CONTROL FOR FUEL OIL VALVES	1							2							2									
11	REMOTE CONTROL FOR LUBE OIL VALVES	1							2							2									
12	REMOTE RELEASE STATION FOR WATER (L. LOCAL)	1			1				2	2						13									
13	EMCY SHUT DOWN SWITCH (PROCESS SHUT DOWN SWITCH)	1		1					16							24									
14	REMOTE CONTROL FOR FIRE DAMPER	1							1							10									
15	REMOTE RELEASE STATION FOR CO2 (L. LOCAL)	1							1							2									
16	REMOTE RELEASE STATION FOR F.OAM (L. LOCAL)	1							1							2									
17	REMOTE RELEASE STATION FOR POWDER (L. LOCAL)	1							1							5									
18	WATER SPRAY PUMP (1500MM X 100MM)	1							1							1									
19	BILGE FIRE & GS PUMP (250MM X 100MM)	1							1							2									
20	EMERGENCY FIRE PUMP (400MM X 100MM)	1							1							1									
21	FIRE HOSE & NOZZLE FOR WATER (M. FIRE HOSE LENGTHS)	1	1	1	6				14	12	4	6	6	5	2	1	3	3	3	1	1	3	1	80	
22	FIRE HOSE & NOZZLE FOR POWDER (M. FIRE HOSE LENGTHS)	1	1	1	5				14	12	4	4	4	3	2	1	3	3	3	3	1	2	1	70	
23	FIRE MAIN SECTION VALVE	1							3	14														1	19
24	FIRE HYDRANT	1	1	1	5				14	12	4	4	4	3	2	1	3	3	3	3	1	2	1	70	
25	FIRE MAN SECTION VALVE	1							3	14														1	19
26	FOAM SECTION VALVE	1							5															1	6
27	N2 GAS VALVE FOR VENT MAST	1							5															1	5
28	WATER MONITOR	1							1	1														1	3
29	POWDER MONITOR	1							1	1														1	3
30	INTERNATIONAL SHORE CONNECTION	1							2															1	3
31	WATER SPRAY VALVE	1							2															1	3
32	MECHANICAL VENTILATION FAN FOR ACCOMMODATION AREA	1							4															1	4
33	MECHANICAL VENTILATION FAN FOR MACHINERY SPACES	2	1						4															1	12
34	MECHANICAL VENTILATION FAN FOR MACHINERY SPACES	2	1						4															1	12
35	MECHANICAL VENTILATION FAN FOR ACCOMMODATION AREA	2	1						4															1	12
36	MECHANICAL VENTILATION FAN FOR MACHINERY SPACES	2	1						4															1	12
37	MECHANICAL VENTILATION FAN FOR ACCOMMODATION AREA	2	1						4															1	12
38	MECHANICAL VENTILATION FAN FOR MACHINERY SPACES	2	1						4															1	12
39	MECHANICAL VENTILATION FAN FOR ACCOMMODATION AREA	2	1						4															1	12
40	MECHANICAL VENTILATION FAN FOR MACHINERY SPACES	2	1						4															1	12
41	MECHANICAL VENTILATION FAN FOR ACCOMMODATION AREA	2	1						4															1	12
42	MECHANICAL VENTILATION FAN FOR MACHINERY SPACES	2	1						4															1	12
43	MECHANICAL VENTILATION FAN FOR ACCOMMODATION AREA	2	1						4															1	12
44	MECHANICAL VENTILATION FAN FOR MACHINERY SPACES	2	1						4															1	12
45	MECHANICAL VENTILATION FAN FOR ACCOMMODATION AREA	2	1						4															1	12
46	MECHANICAL VENTILATION FAN FOR MACHINERY SPACES	2	1						4															1	12
47	MECHANICAL VENTILATION FAN FOR ACCOMMODATION AREA	2	1						4															1	12
48	MECHANICAL VENTILATION FAN FOR MACHINERY SPACES	2	1						4															1	12
49	MECHANICAL VENTILATION FAN FOR ACCOMMODATION AREA	2	1						4															1	12
50	MECHANICAL VENTILATION FAN FOR MACHINERY SPACES	2	1						4															1	12
51	MECHANICAL VENTILATION FAN FOR ACCOMMODATION AREA	2	1						4															1	12
52	MECHANICAL VENTILATION FAN FOR MACHINERY SPACES	2	1						4															1	12
53	MECHANICAL VENTILATION FAN FOR ACCOMMODATION AREA	2	1						4															1	12
54	MECHANICAL VENTILATION FAN FOR MACHINERY SPACES	2	1						4															1	12
55	MECHANICAL VENTILATION FAN FOR ACCOMMODATION AREA	2	1						4															1	12
56	MECHANICAL VENTILATION FAN FOR MACHINERY SPACES	2	1						4																