

TABELLA POZZETTI - Rete 13 - Direzione nord

POZZETTO	QUOTA SCORRIMENTO TUBO IN INGRESSO [m s.l.m.]	QUOTA SCORRIMENTO TUBO IN USCITA [m s.l.m.]
PN-1301		149.81
PN-1302	149.74	149.74
PN-1303	149.70	149.70
PN-1304	149.68	149.68
PN-1305	149.62	149.62
PN-1306	149.60	149.30
PN-1307	149.26	149.26
PN-1308	149.20	149.20
PN-1309	149.14	149.14
PN-1310	149.08	149.08
PN-1311	149.04	149.04
PN-1312	149.02	149.02
PN-1313	148.96	148.96
PN-1314	148.90	148.90
PN-1315	148.84	148.84
PN-1316	148.78	148.78
PN-1317	148.72	148.72
PN-1318	148.66	148.66
PN-1319	148.59	148.59
PN-1320	148.54	148.54
PN-1321	148.53	148.53
PN-1322	148.46	148.46
PN-1323	148.43	148.43
PN-1324	148.37	148.37
PN-1325	148.31	148.31
PN-1326	148.25	148.25
PN-1327	148.19	148.19
PN-1328	148.13	148.13
PN-1329	148.07	148.07
PN-1330	148.01	148.01
PN-1331	147.95	147.95
PN-1332	147.89	147.89
PN-1333	147.73	147.73
PN-1334	147.11	147.11
PN-1335	147.07	147.07
PN-1336	147.03	147.03
PN-1337	146.99	146.99
PN-1338	146.95	146.95
PN-1339	146.91	146.91
PN-1340	146.87	146.87
PN-1341	146.83	146.83
PN-1342	146.79	146.79
PN-1343	146.75	146.75
PN-1344	146.71	146.71
PN-1345	146.67	146.67
PN-1346	146.63	146.63
PN-1347	146.59	146.59
PN-1348	146.55	146.55
PN-1349	146.51	146.51
PN-1350	146.47	146.47
PN-1351	146.44	146.44

TABELLA POZZETTI - Rete 13 - Asse M - Trincea dir. nord

POZZETTO	QUOTA SCORRIMENTO TUBO IN INGRESSO [m s.l.m.]	QUOTA SCORRIMENTO TUBO IN USCITA [m s.l.m.]
PTN-M1301	149.13	149.13
PTN-M1302	149.03	149.03
PTN-M1303	148.93	148.93
PTN-M1304	148.83	148.83
PTN-M1305	148.73	148.73
PTN-M1306	148.63	148.63
PTN-M1307	148.53	148.53
PTN-M1308	148.47	148.47
PTN-M1309	148.44	148.44
PTN-M1310	148.33	148.33
PTN-M1311	148.23	148.23
PTN-M1312	148.13	148.13
PTN-M1313	148.03	148.03
PTN-M1314	147.93	147.93
PTN-M1315	147.83	147.83
PTN-M1316	147.73	147.73
PTN-M1317	147.63	147.63
PTN-M1318	147.53	147.53
PTN-M1319	147.43	147.43
PTN-M1320	147.33	147.33
PTN-M1321	147.23	147.23
PTN-NULL1	160.55	160.55
PTN-NULL2	159.33	159.33
PTN-NULL3	158.34	158.34
PTN-NULL4	157.35	157.35
PTN-NULL5	156.36	156.36
PTN-NULL6	155.37	155.37
PTN-NULL7	154.80	154.80
PTN-NULL8	154.38	154.38
PTN-NULL9	153.39	153.39
PTN-NULL10	152.65	150.25
PTN-NULL11	150.13	150.13
PTN-NULL12	150.03	150.03
PTN-NULL13	149.93	149.93
PTN-NULL14	149.83	149.83
PTN-NULL15	149.73	149.73
PTN-NULL16	149.63	149.63
PTN-NULL17	149.53	149.53
PTN-NULL18	149.43	149.43
PTN-NULL19	149.33	149.33
PTN-NULL20	149.23	149.23

TABELLA POZZETTI - Rete 13 - Asse D

POZZETTO	QUOTA SCORRIMENTO TUBO IN INGRESSO [m s.l.m.]	QUOTA SCORRIMENTO TUBO IN USCITA [m s.l.m.]
C-D1	168.82	168.82
C-D2	168.34	168.34
C-D3	167.74	167.74
C-D4	167.80	167.80
PS-D1	169.10	169.10
PS-D2	169.06	169.06
PS-D3	169.00	169.00
PS-D4	168.94	168.94
PS-D5	168.88	168.88
PS-D6	166.94	166.17
PS-D7	166.05	165.81
PS-D8	166.68	165.81
PS-D9	164.68	164.68
PS-D10	163.58	163.58
PS-D11	162.48	162.48
PS-D12	161.38	160.81
PS-D13	159.81	159.81
PS-D14	158.81	158.81
PS-D15	157.81	157.81
PS-D16	156.81	156.81
PS-D17	155.81	155.81
PS-D18	154.81	154.81
PS-D19	154.78	154.77

TABELLA POZZETTI - Rete 13 - Trincea dir. sud

POZZETTO	QUOTA SCORRIMENTO TUBO IN INGRESSO [m s.l.m.]	QUOTA SCORRIMENTO TUBO IN USCITA [m s.l.m.]
PTS-1301	152.22	152.22
PTS-1302	152.15	152.15
PTS-1303	152.09	152.09
PTS-1304	152.03	152.03
PTS-1305	151.97	151.97
PTS-1306	151.95	151.95
PTS-1307	151.88	151.88
PTS-1308	151.83	151.83
PTS-1309	151.81	151.81
PTS-1310	151.74	151.74
PTS-1311	151.72	151.72
PTS-1312	151.66	151.56
PTS-1313	151.50	151.50
PTS-1314	151.44	151.44
PTS-1315	151.38	151.38
PTS-1316	151.32	151.32
PTS-1317	151.26	151.26
PTS-1318	151.20	151.20
PTS-1319	151.14	151.14
PTS-1320	151.08	151.08
PTS-1321	151.02	151.02
PTS-1322	150.96	150.96
PTS-1323	150.90	150.90
PTS-1324	150.84	150.84
PTS-1325	150.78	150.78
PTS-1326	150.72	148.90

TABELLA POZZETTI - Rete 13 - Asse F

POZZETTO	QUOTA SCORRIMENTO TUBO IN INGRESSO [m s.l.m.]	QUOTA SCORRIMENTO TUBO IN USCITA [m s.l.m.]
C-F1	171.45	171.44
C-F2	170.64	170.64
C-F3	169.84	169.84
C-F4	169.04	167.76
C-F5	158.57	158.57
C-F6	157.67	157.67
C-F7	156.77	156.77
PN-F1	171.69	171.69
PN-F2	171.63	171.63
PN-F3	171.57	171.57
PN-F4	171.51	171.51
PN-F5	166.86	166.86
PN-F6	165.96	165.42
PN-F7	164.52	164.52
PN-F8	163.62	162.81
PN-F9	161.91	161.91
PN-F10	161.01	161.01
PN-F11	160.11	159.47
PN-F12	155.14	155.14
PN-F13	154.34	154.34
PN-F14	153.54	153.44
PN-F15	152.64	152.44
PN-F16	152.64	152.64
PN-F17	152.00	151.79
PN-F18	151.51	151.51
PN-F19	151.51	151.44
PN-F20	155.82	155.82

TABELLA POZZETTI - Rete 13 - Asse L

POZZETTO	QUOTA SCORRIMENTO TUBO IN INGRESSO [m s.l.m.]	QUOTA SCORRIMENTO TUBO IN USCITA [m s.l.m.]
PN-L1		153.80
PN-L2	153.60	153.60
PN-L3	153.20	153.20
PN-L4	153.07	153.07
PN-L5	152.80	152.80
PN-L6	152.40	152.40
PN-L7	152.00	152.00
PN-L8	151.60	151.60
PN-L9	151.54	151.44
PN-L10	151.38	151.38

TABELLA POZZETTI - Rete 13 - Asse L

POZZETTO	QUOTA SCORRIMENTO TUBO IN INGRESSO [m s.l.m.]	QUOTA SCORRIMENTO TUBO IN USCITA [m s.l.m.]
PN-L11	151.35	151.05
PN-L12	151.02	151.02
PN-L13	150.96	150.96
PN-L14	150.90	150.90
PN-L15	150.84	150.84
PN-L16	150.80	150.80
PN-L17	150.78	150.78
PN-L18	150.68	150.68
PN-L19	150.58	150.58
PN-L20	150.48	150.47

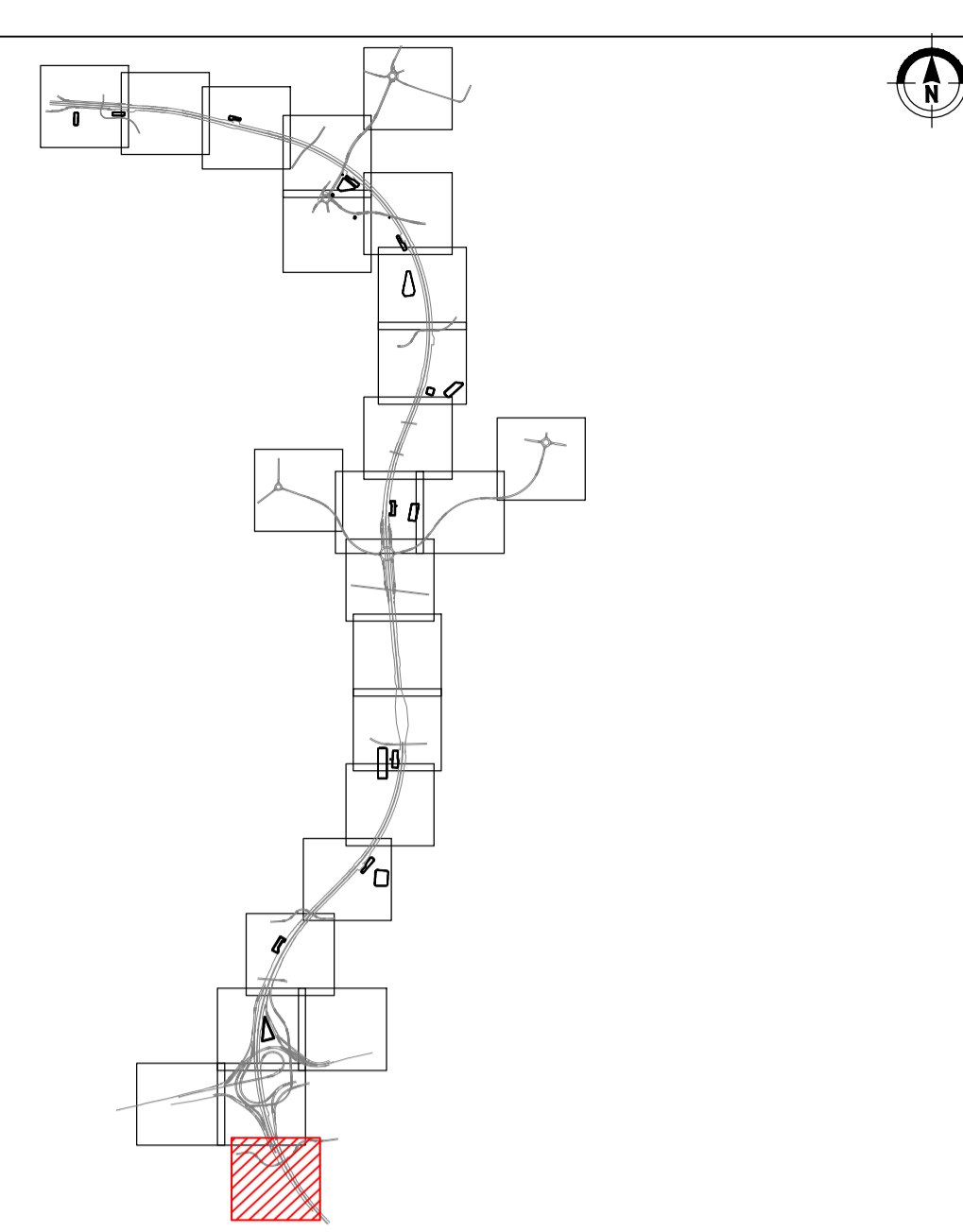
TABELLA POZZETTI - Rete 13 - Assi F-L - Trincea dir. nord

POZZETTO	QUOTA SCORRIMENTO TUBO IN INGRESSO [m s.l.m.]	QUOTA SCORRIMENTO TUBO IN USCITA [m s.l.m.]
PTN-NULL21		154.72
PTN-NULL22	154.25	154.25
PTN-NULL23	153.55	153.52
PTN-NULL24	153.32	153.17
PTN-NULL25	152.87	152.86
PTN-NULL26	152.80	152.80
PTN-NULL27	152.74	152.74
PTN-NULL28	152.68	151.25
PTN-NULL29	151.20	151.20
PTN-NULL30	151.15	151.15
PTN-NULL31	151.09	151.09
PTN-NULL32	151.03	151.03
PTN-NULL33	150.87	150.87
PTN-NULL34	150.81	150.81
PTN-NULL35	150.76	150.76
PTN-NULL36	150.70	150.70
PTN-NULL37	150.64	150.64
PTN-NULL38	150.58	150.58
PTN-NULL39	150.55	150.30

TABELLA POZZETTI - Rete 13 - Asse B

POZZETTO	QUOTA SCORRIMENTO TUBO IN INGRESSO [m s.l.m.]	QUOTA SCORRIMENTO TUBO IN USCITA [m s.l.m.]
C-B1		171.69
C-B2	171.65	171.65
C-B3	171.63	171.63
C-B4	171.59	171.59
C-B5	171.55	171.45
C-B6	170.85	170.85
C-B7	170.25	170.25
C-B8	169.65	169.65
C-B9	168.85	168.85
C-B10	168.05	168.05
C-B11	167.25	167.25
C-B12	166.45	166.45
C-B13	165.65	165.65
C-B14	164.85	164.85
C-B15	164.05	164.05
C-B16	163.25	163.25
C-B17	162.45	162.45
C-B18	161.65	161.65
C-B19	160.85	160.85
C-B20	160.05	163.28
C-B21	162.36	162.36
C-B22	161.50	161.50
C-B23	160.70	160.70
PS-B1	160.16	160.16
PS-B2	160.05	159.25
PS-B3	158.45	158.45
PS-B4	157.85	157.85
PS-B5	157.65	157.55
PS-B6	157.54	157.34
PS-B7	157.31	157.31
PS-B18	162.04	162.04
PS-B20	161.30	161.30

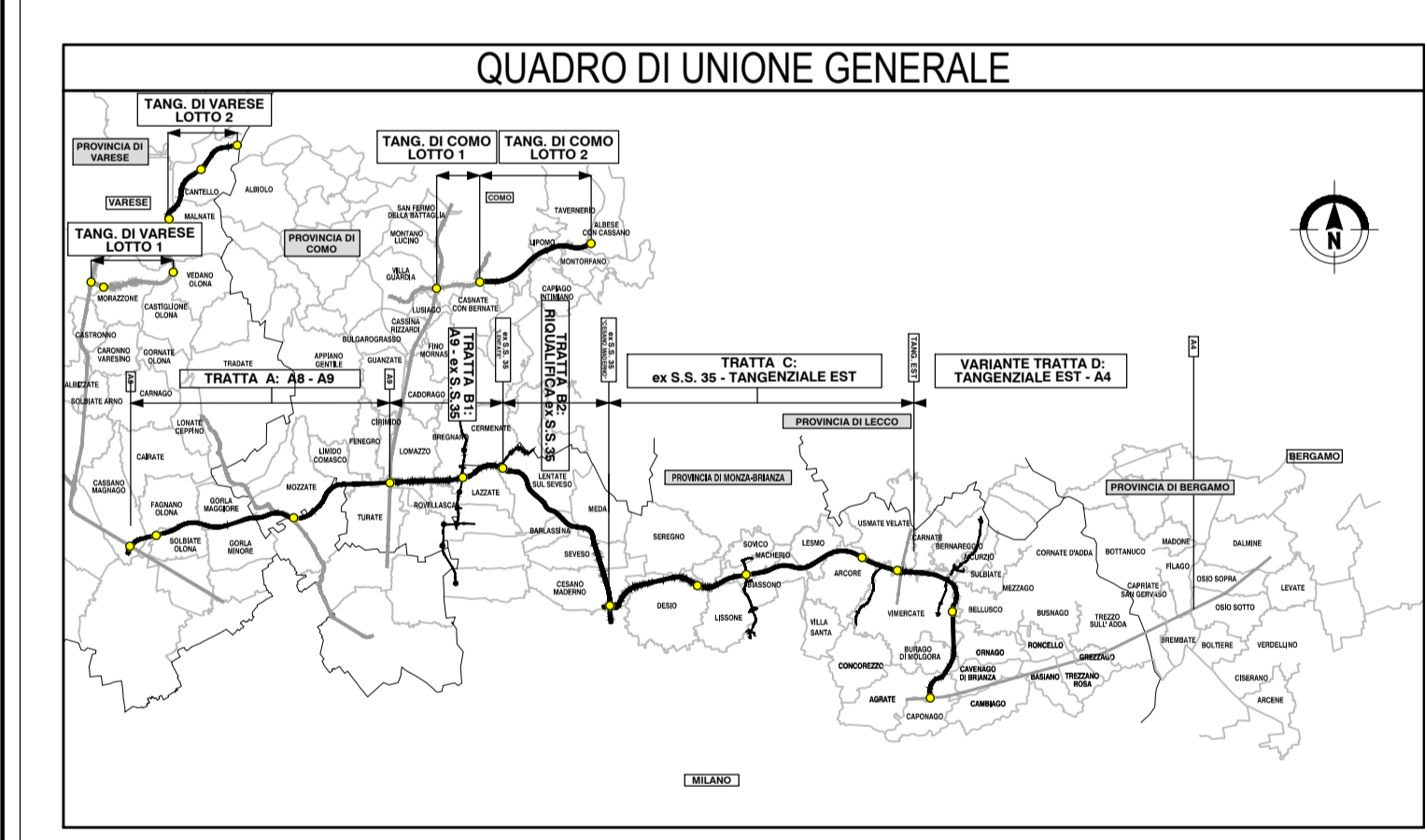
K-PLAN



**LEGGENDA**

- COLLETTORE IN PEAD Ø<sub>int</sub> 200 mm
- COLLETTORE IN PEAD Ø<sub>int</sub> 300 mm
- COLLETTORE IN PEAD Ø<sub>int</sub> 400 mm
- COLLETTORE IN PEAD Ø<sub>int</sub> 500 mm
- COLLETTORE IN PEAD Ø<sub>int</sub> 600 mm
- COLLETTORE IN PEAD Ø<sub>int</sub> 700 mm
- COLLETTORE IN PEAD Ø<sub>int</sub> 800 mm
- COLLETTORE IN PEAD Ø<sub>int</sub> 1000 mm
- COLLETTORE IN PEAD Ø<sub>int</sub> 1200 mm
- COLLETTORE IN PEAD Ø<sub>int</sub> 1400 mm
- COLLETTORE IN PEAD Ø<sub>int</sub> 1500 mm
- COLLETTORE IN PEAD MICROFESSURATO Ø<sub>int</sub> 150 mm
- COLLETTORE IN PEAD MICROFESSURATO Ø<sub>int</sub> 250 mm
- COLLETTORE IN PEAD MICROFESSURATO Ø<sub>int</sub> 400 mm
- COLLETTORE IN PEAD MICROFESSURATO Ø<sub>int</sub> 500 mm
- COLLETTORE IN PEAD MICROFESSURATO Ø<sub>int</sub> 600 mm
- COLLETTORE IN PRESSIONE IN ACCIAIO Ø<sub>int</sub> 100 mm
- COLLETTORE IN PRESSIONE IN ACCIAIO Ø<sub>int</sub> 200 mm
- COLLETTORE IN ACCIAIO Ø<sub>int</sub> 250 mm
- COLLETTORE IN ACCIAIO Ø<sub>int</sub> 400 mm
- COLLETTORE IN ACCIAIO Ø<sub>int</sub> 500 mm
- CANALETTA CON GRIGLIA
- DIREZIONE DI FLUSSO DELLE ACQUE DI PIATTAFORMA
- DIREZIONE DEFLUSSO COLLETTORI
- POZZETTO DI RACCOLTA/ISPEZIONE\*
- POZZETTO DI ISPEZIONE\*
- CADITOIA
- POZZI FILTRANTI
- IMPIANTO DI SOLLEVAMENTO

\*VEDI PARTICOLARI COSTRUTTIVI  
NB: Le discenderie dalla canaletta grigliata sull'asse principale hanno un passo pari a 20 m, salvo diversa indicazione NB: Gli oggetti classificati come "[...] NULL" indicano cambi di direzione delle condotte e non rappresentano pozzetti.



**COLLEGAMENTO AUTOSTRADALE DALMINE-COMO-VARESE-VALICO DEL GAGGIOLO E OPERE AD ESSO CONNESSE**

CONCESSIONARI AUTOSTRADALI LOMBARDE

**PROGETTO DEFINITIVO VARIANTE TRATTA D**

**IDROLOGIA ED IDRAULICA**

SMALTIMENTO ACQUE DI PIATTAFORMA - ASSE PRINCIPALE

Planimetria di progetto - Tav. 20/20

SCALA: 1:1000

DATA: 30 Giugno 2023

REVISIONE: EMISSIONE

ELABORAZIONE PROGETTUALE

VERIFICA E VALIDAZIONE