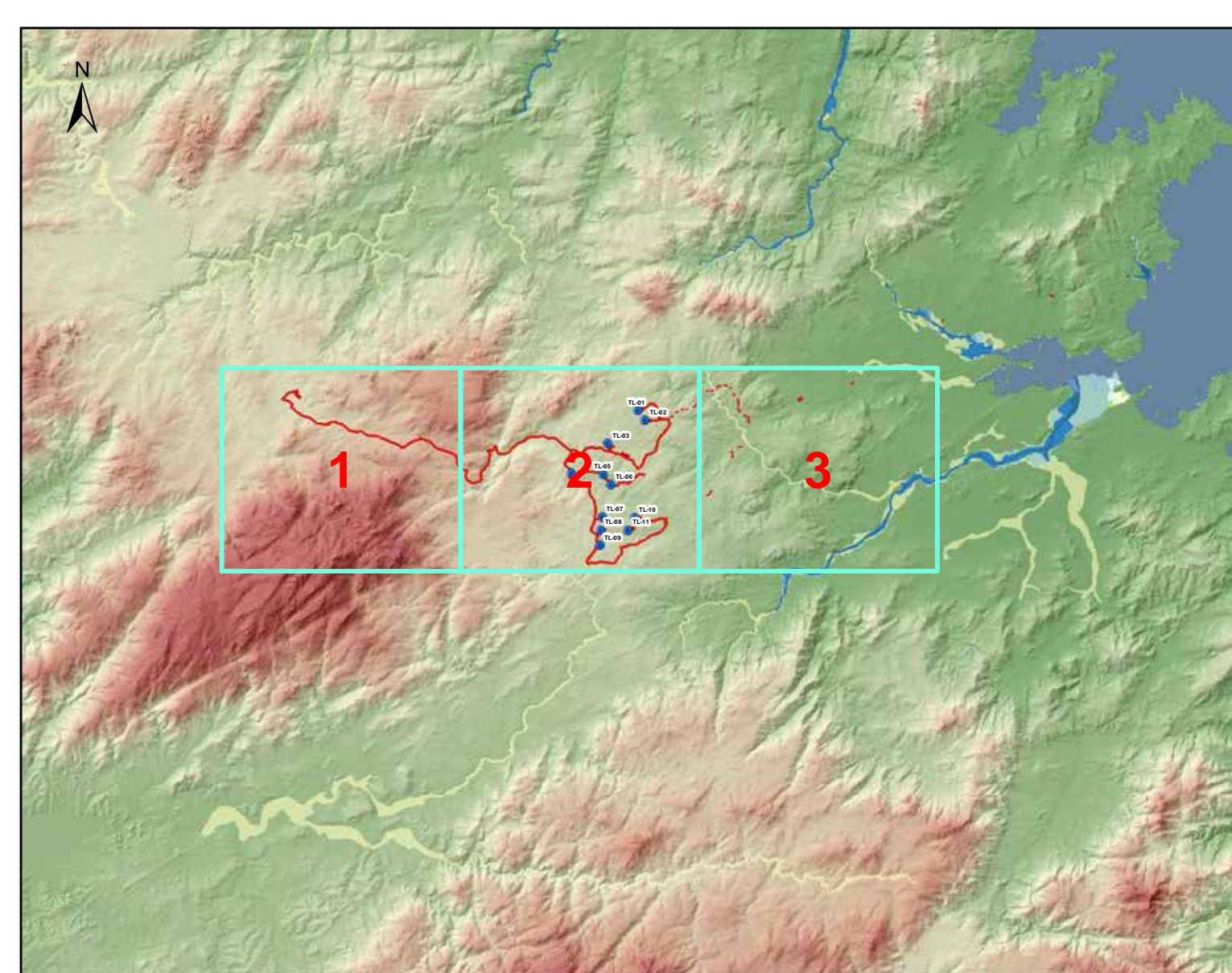





- Legenda**
- Aerogeneratori in progetto
 - ▭ Opere in progetto
 - ▭ Piano stralico fasce fluviali - classe fascia
 - ▭ A2 - (H4 - Tempo di ritorno Tr = 2 anni)
 - ▭ A50 - (H4 - Tempo di ritorno Tr = 50 anni)
 - ▭ B100 - (H2 - Tempo di ritorno Tr = 100 anni)
 - ▭ B200 - (H2 - Tempo di ritorno Tr = 200 anni)
 - ▭ C - (H1 - Tempo di ritorno Tr = 500 anni)



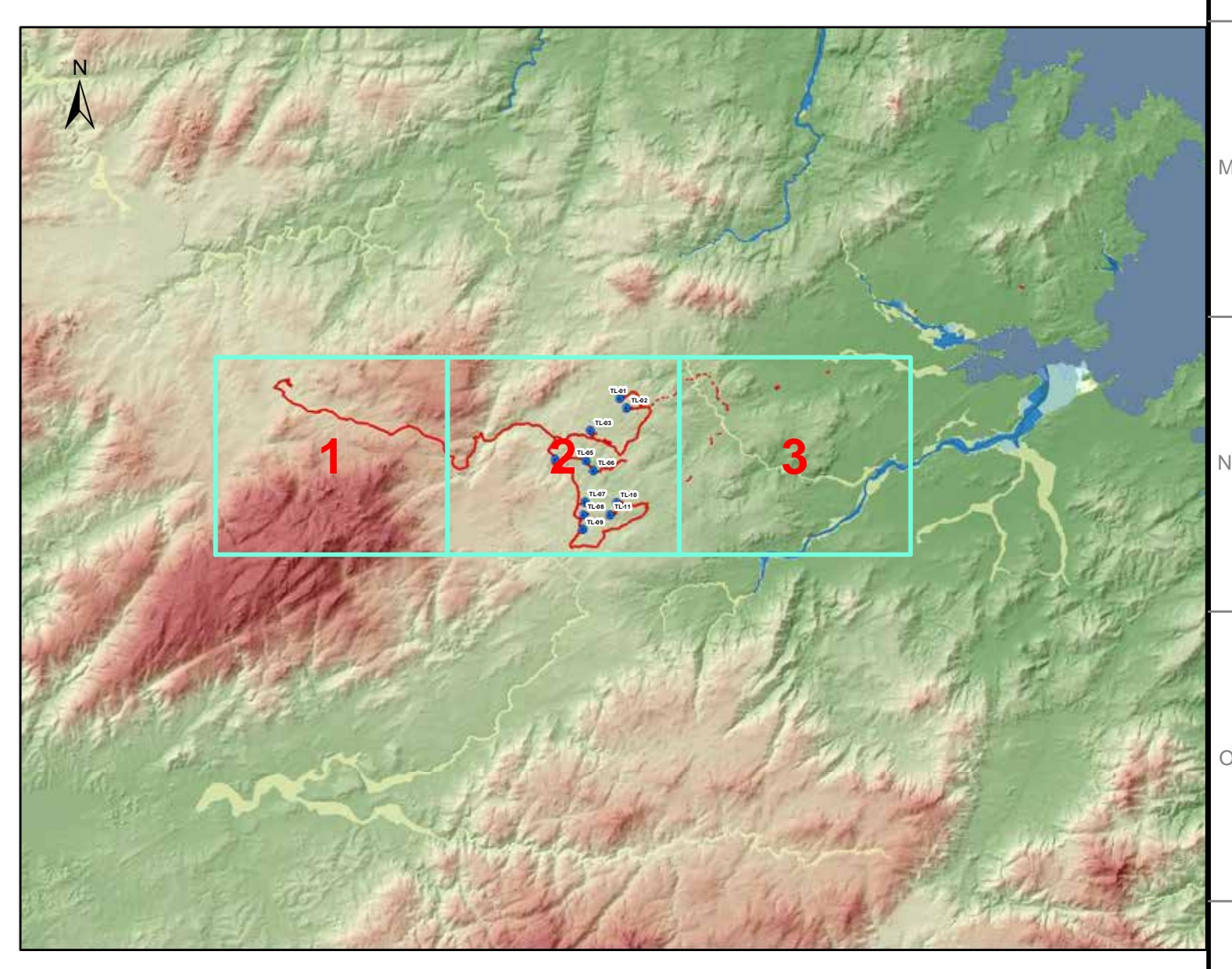
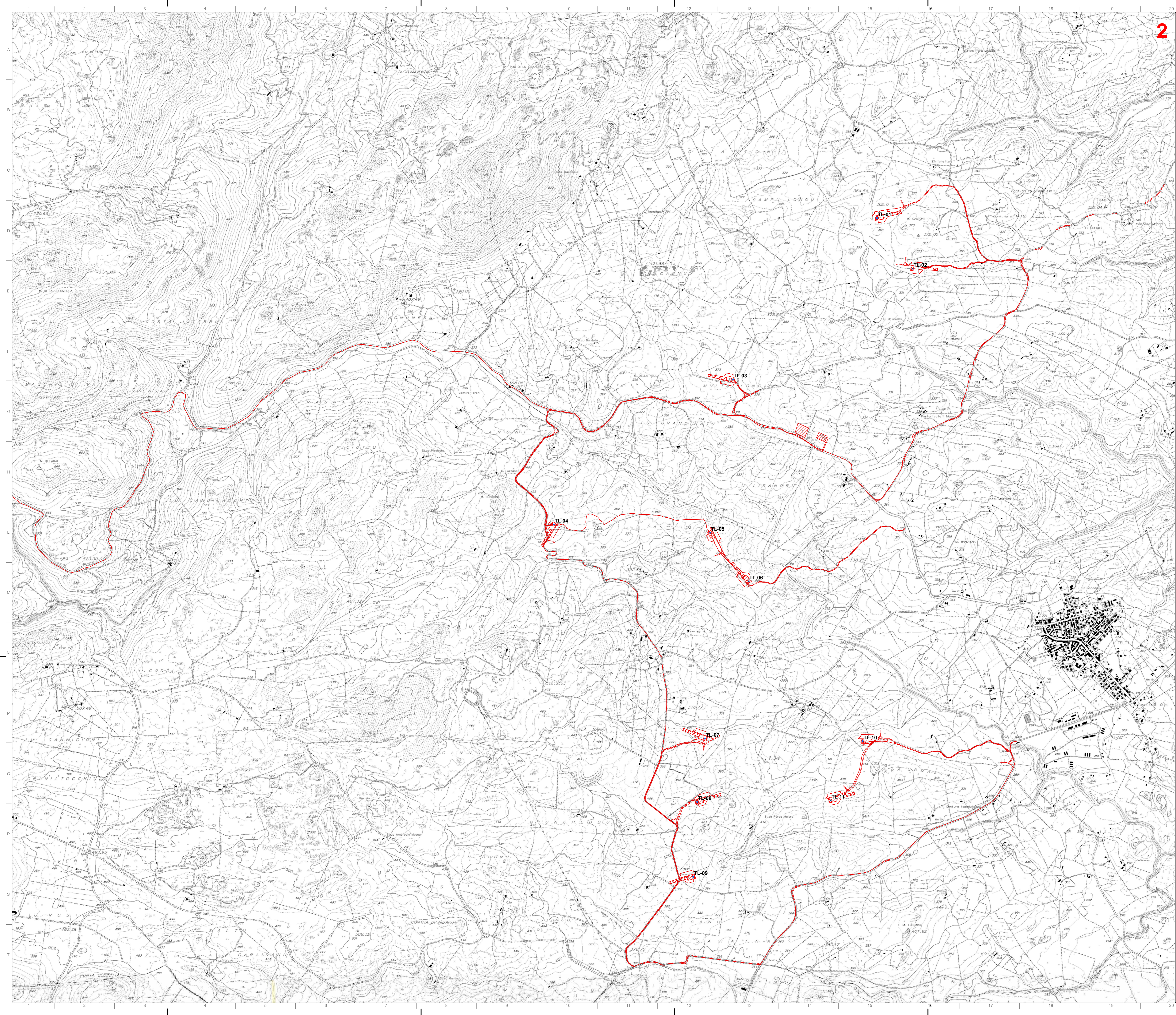
 Dott. Ing. Giuseppe Proff. Ing. Casali					
0	07.22	Prima emissione	AC	GF	GF
REV.	DATE	DESCRIPTION	PREPARED	CHECKED	APPROVED
		IMPIANTO EOLICO "TELTI" Comuni di Telti e Calangianus (OT)			
		FILE NAME: _____ <small>GRE EOLIC WITHIN CONSORZIO - PIANO STRALICO AREE FLUVIALI</small>	CLASSIFICATION: _____ <small>GRE EOLIC WITHIN CONSORZIO - PIANO STRALICO AREE FLUVIALI</small>	FORMAT: A0 SCALE: 1:10.000 PLOT SCALE: 1/1 SHEET: 1 di 3	UTILIZATION SCOPE: _____ TITLE: _____
GRE VALIDATION VALIDATED BY: A. PUOSI		PIANO STRALICO AREE FLUVIALI			
VERIFIED BY: _____ COLLABORATOR: _____	GRE CODE GREEC X 9 9 9 I T W 1 5 5 9 0 0 5 0 3 2 0 0				




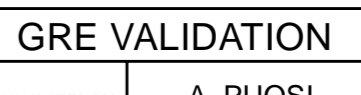
Legenda

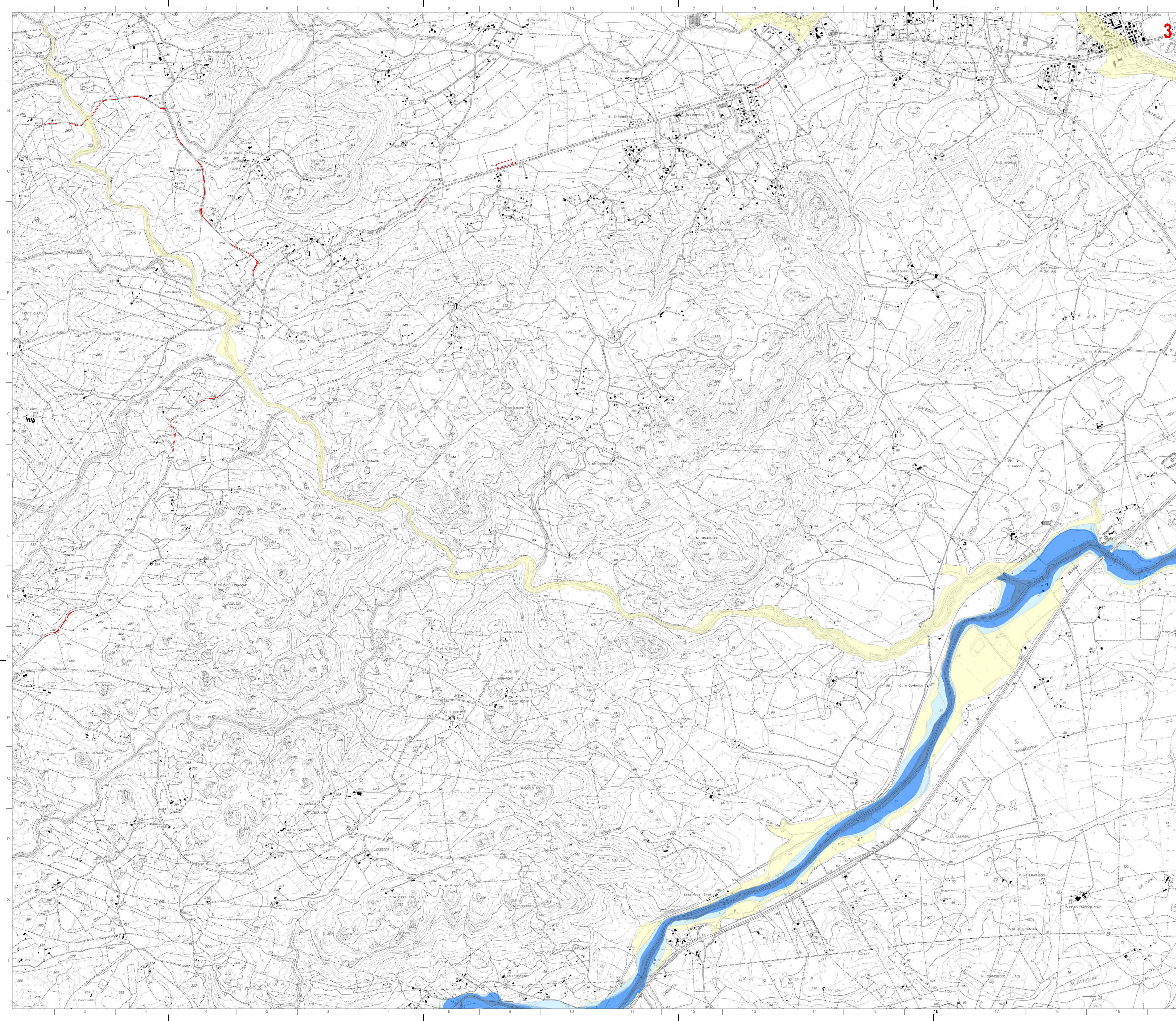
- Aerogeneratori in progetto
- ▭ Opere in progetto
- ▭ Opere in progetto

Piano stralicio fasce fluviali - classe fascia

- A2 - (H4 - Tempo di ritorno Tr = 2 anni)
- A50 - (H4 - Tempo di ritorno Tr = 50 anni)
- B100 - (H2 - Tempo di ritorno Tr = 100 anni)
- B200 - (H2 - Tempo di ritorno Tr = 200 anni)
- C - (H1 - Tempo di ritorno Tr = 500 anni)

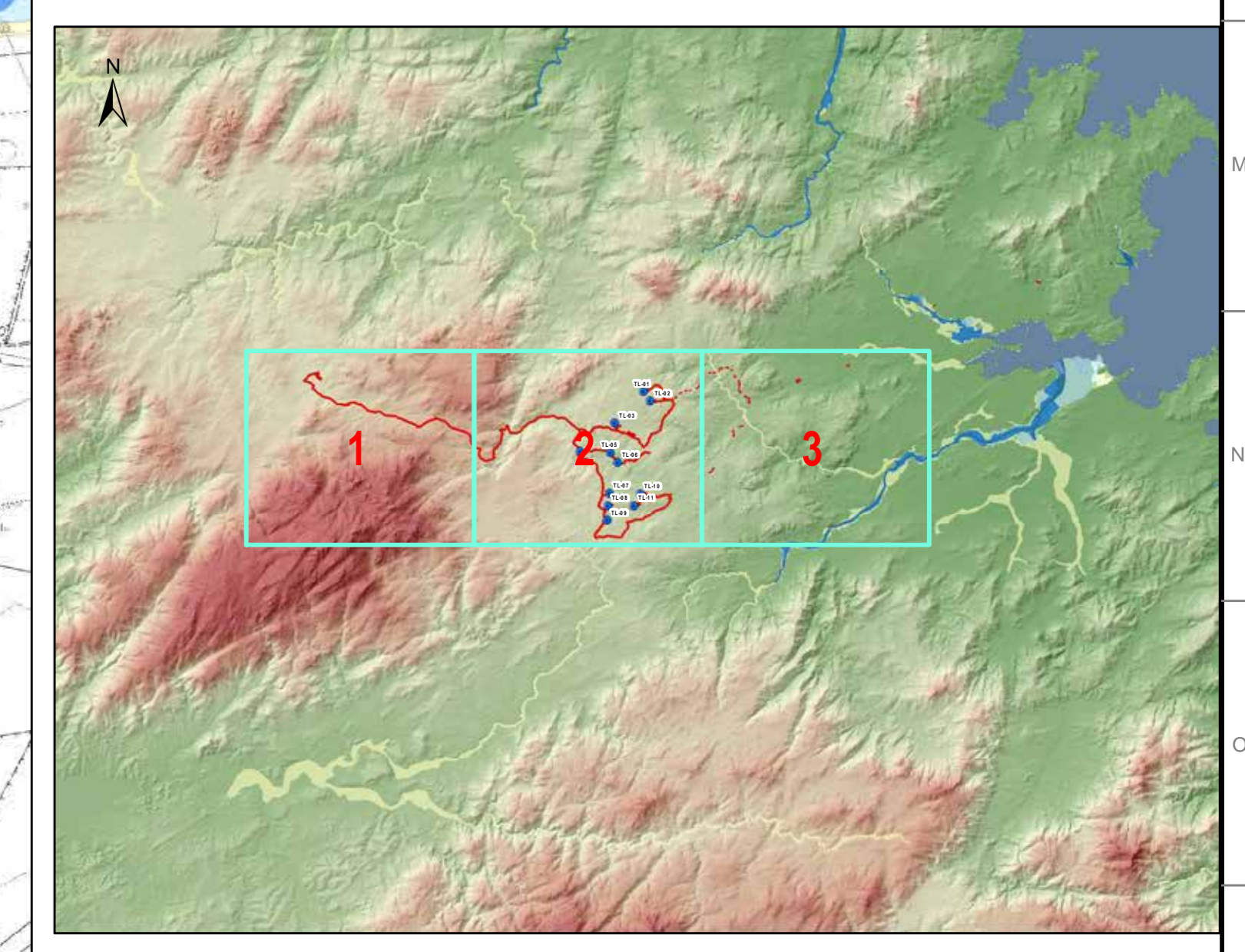


							
0	07.22	Prima emissione	AC	GF	GF		
CONTRATTOR'S LOGO		PROJECT:	IMPIANTO EOLICO "TELITI" Comuni di Telti e Calangianus (OT)				
		FILE NAME:	GRE EOLIC AREA FLUVIALI - PIANO STRALICIO AREE FLUVIALI				
		CLASSIFICATION:	FORMAT:	SCALE:	PLOT SCALE:	SHEET:	
		UTILIZATION SCOPE:	TITLE:	PIANO STRALICIO AREE FLUVIALI			
VERIFIED BY: A. PUOSI		GRE CODE GROUP FUNCTION TYPE ISSUE COUNTRY TEC PLANT SYSTEM PROGRESSIVE REVISION GREEC X 9 9 1 T W 1 5 5 9 0 0 5 0 3 2 0 0					



Legenda

- Aerogeneratori in progetto
- ▭ Opere in progetto
- ▭ Piano stralicio fasce fluviali - classe fascia
- ▭ A2 - (H4 - Tempo di ritorno Tr = 2 anni)
- ▭ A50 - (H4 - Tempo di ritorno Tr = 50 anni)
- ▭ B100 - (H2 - Tempo di ritorno Tr = 100 anni)
- ▭ B200 - (H2 - Tempo di ritorno Tr = 200 anni)
- ▭ C - (H1 - Tempo di ritorno Tr = 500 anni)



INGEGNERIA
PROGETTAZIONE
CONSULENZA
CAVALIARI
 Dott. Ing. Giuseppe Proffia

0	07.22	Prima emissione	AC	GF	GF
REV.	DATE	DESCRIPTION	PREPARED	CHECKED	APPROVED

PROJECT: **IMPIANTO EOLICO "TELTI"**
 Comuni di Telti e Calangianus (OT)

FILE NAME: GRE_EELX_01710_C000000000 - PIANO STRALICIO AREE FLUVIALI

CLASSIFICATION:	FORMAT:	SCALE:	PLOT SCALE:	SHEET:
	A0	1:10.000	1/1	3 di 3

UTILIZATION SCOPE: TITLE: **PIANO STRALICIO AREE FLUVIALI**

GRE VALIDATION

VERIFIED BY: A. PUOSI

GROUP:	FUNCTION:	TYPE:	ISSUE:	COUNTRY:	SEC:	PLANT:	SYSTEM:	PROGRESSIVE:	REVISION:									
GREEC	X	9	9	I	T	W	1	5	5	9	0	0	5	0	3	2	0	0

Small text at the bottom: This document is property of Enel Green Power S.p.A. It is strictly confidential and its use is limited to the project for which it was prepared. It is not to be distributed outside the project without the written consent of Enel Green Power S.p.A.