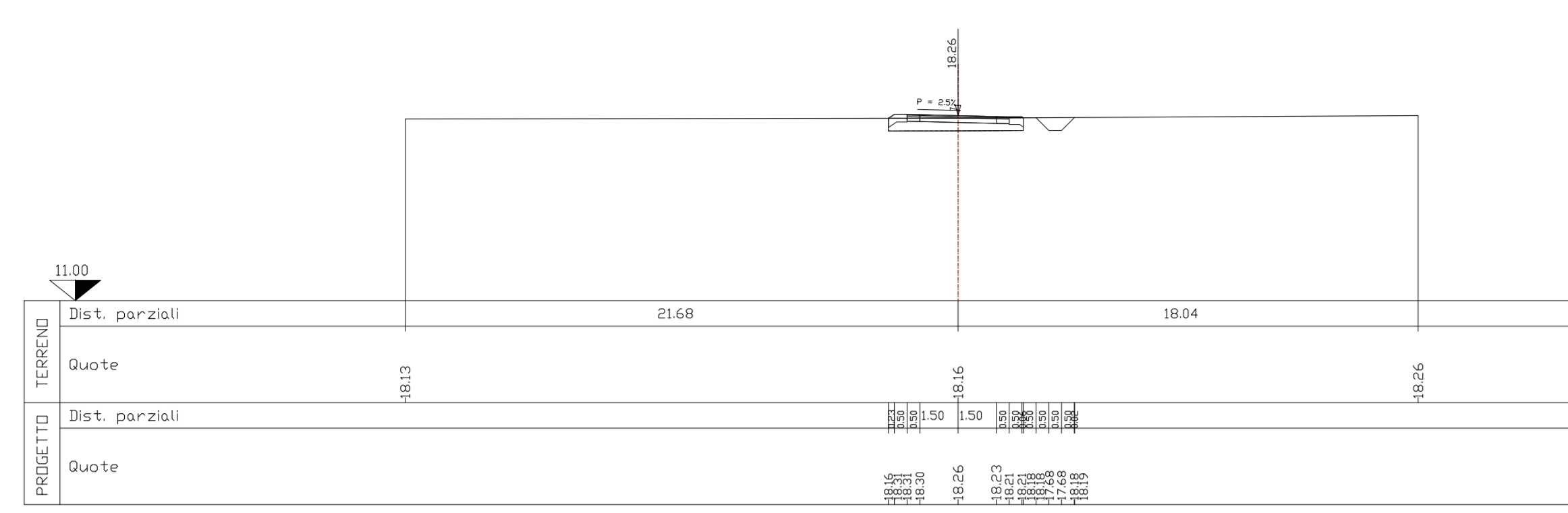


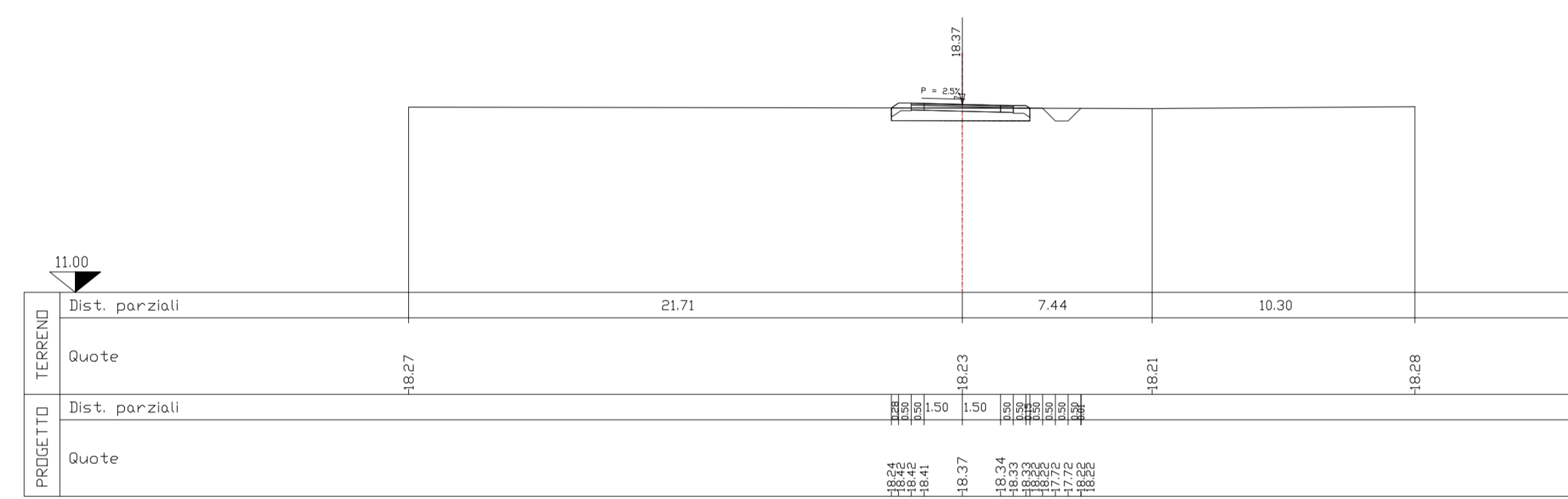
Asse di ricicatura n.26_NV13 1 PRDGR. 0.00 PARZ. 0.00

SEZIONE N. 1 table with columns: Item, Quantity, Unit. Includes items like Piano di posa, Bonifica, Scavo, Rilevato, etc.



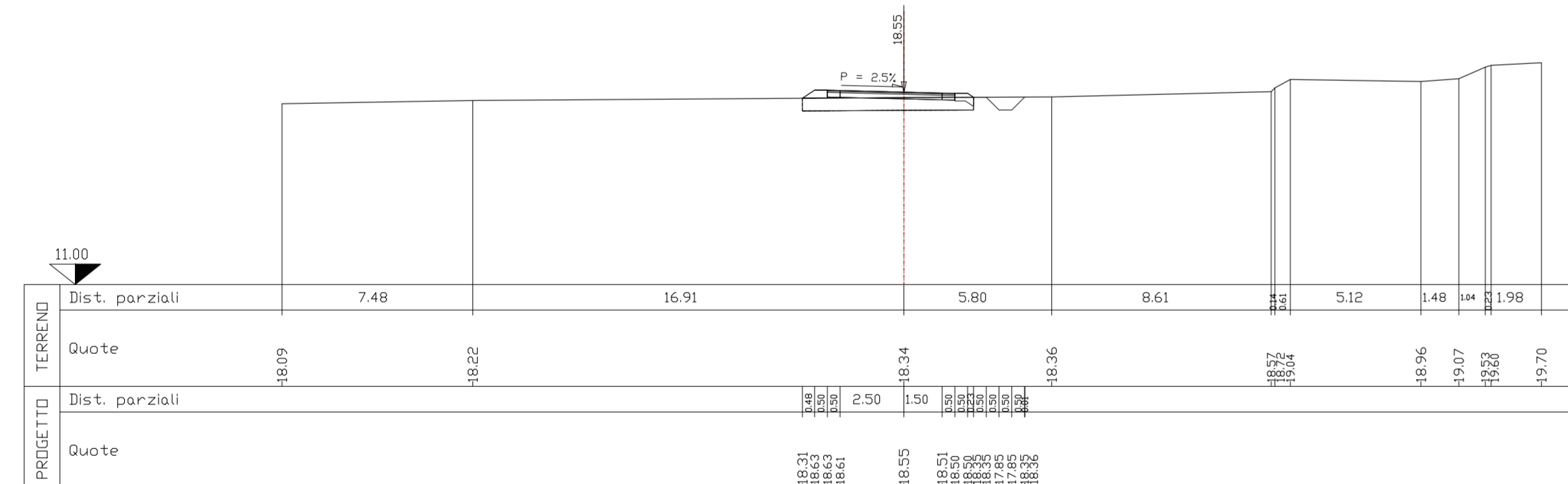
Asse di ricicatura n.26_NV13 2 PRDGR. 5.57 PARZ. 5.57

SEZIONE N. 2 table with columns: Item, Quantity, Unit. Includes items like Piano di posa, Bonifica, Scavo, Rilevato, etc.



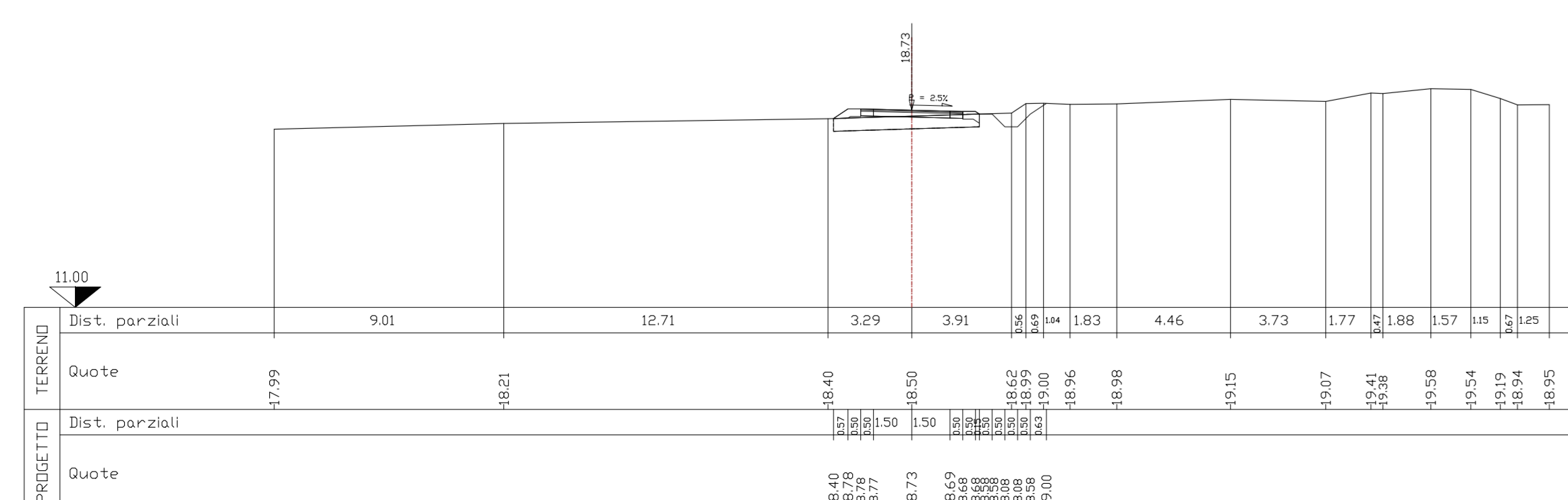
Asse di ricicatura n.26_NV13 3 PRDGR. 14.36 PARZ. 8.79

SEZIONE N. 3 table with columns: Item, Quantity, Unit. Includes items like Piano di posa, Bonifica, Scavo, Rilevato, etc.



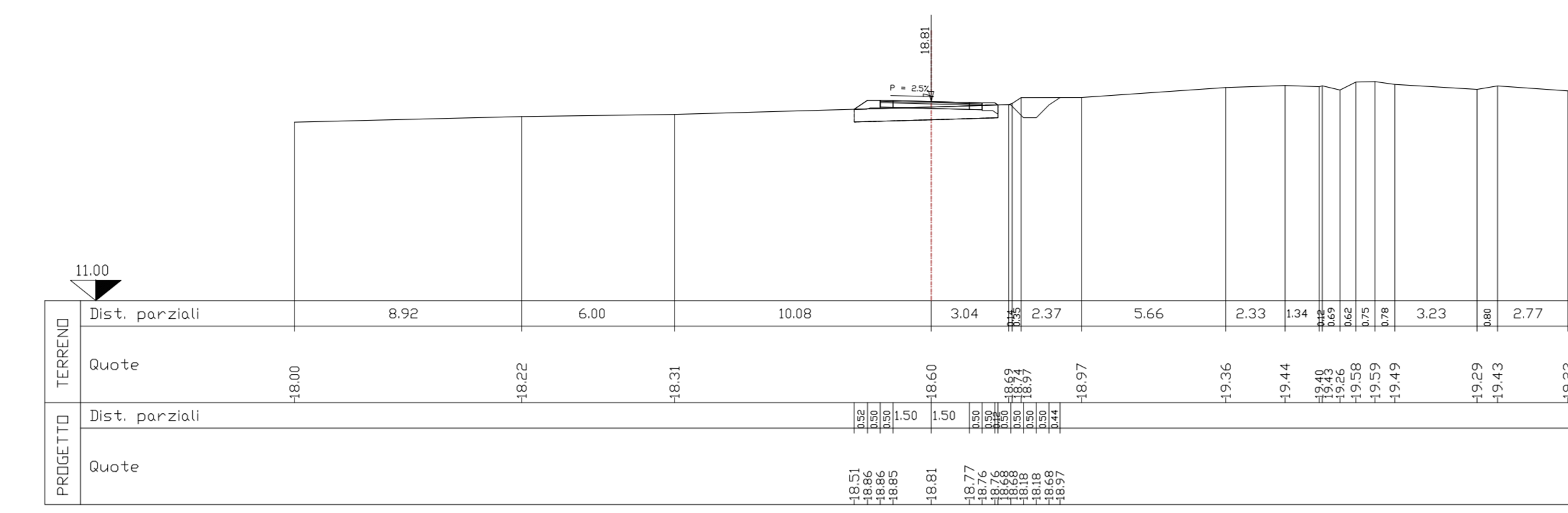
Asse di ricicatura n.26_NV13 4 PRDGR. 23.15 PARZ. 8.79

SEZIONE N. 4 table with columns: Item, Quantity, Unit. Includes items like Piano di posa, Bonifica, Scavo, Rilevato, etc.



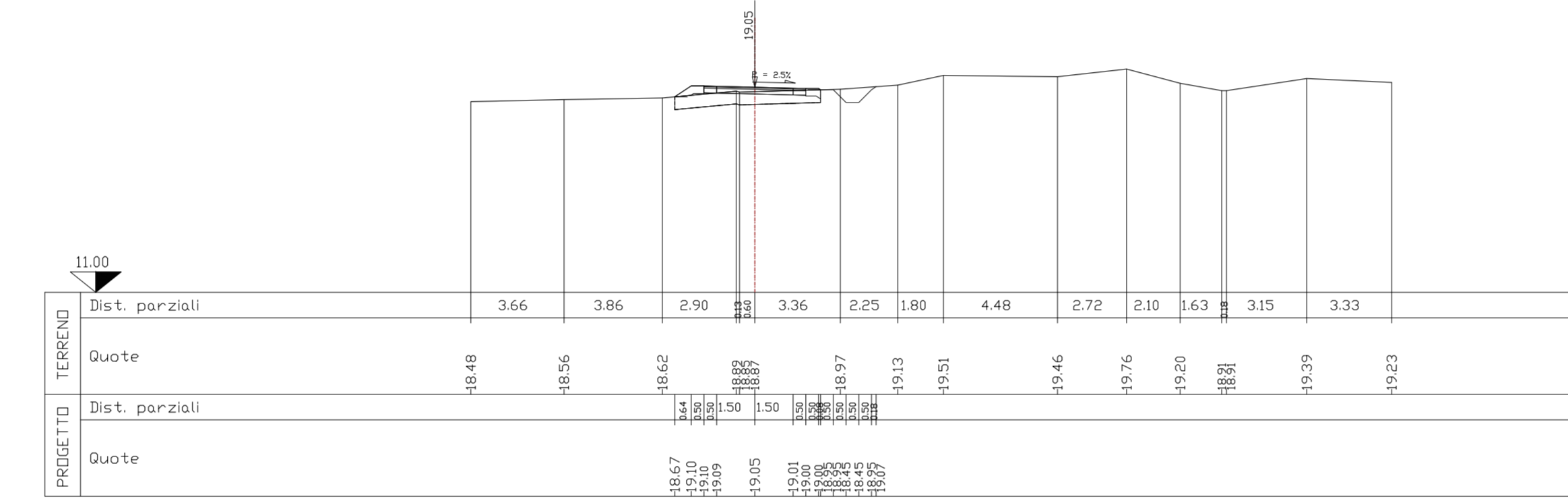
Asse di ricicatura n.26_NV13 5 PRDGR. 27.15 PARZ. 4.01

SEZIONE N. 5 table with columns: Item, Quantity, Unit. Includes items like Piano di posa, Bonifica, Scavo, Rilevato, etc.



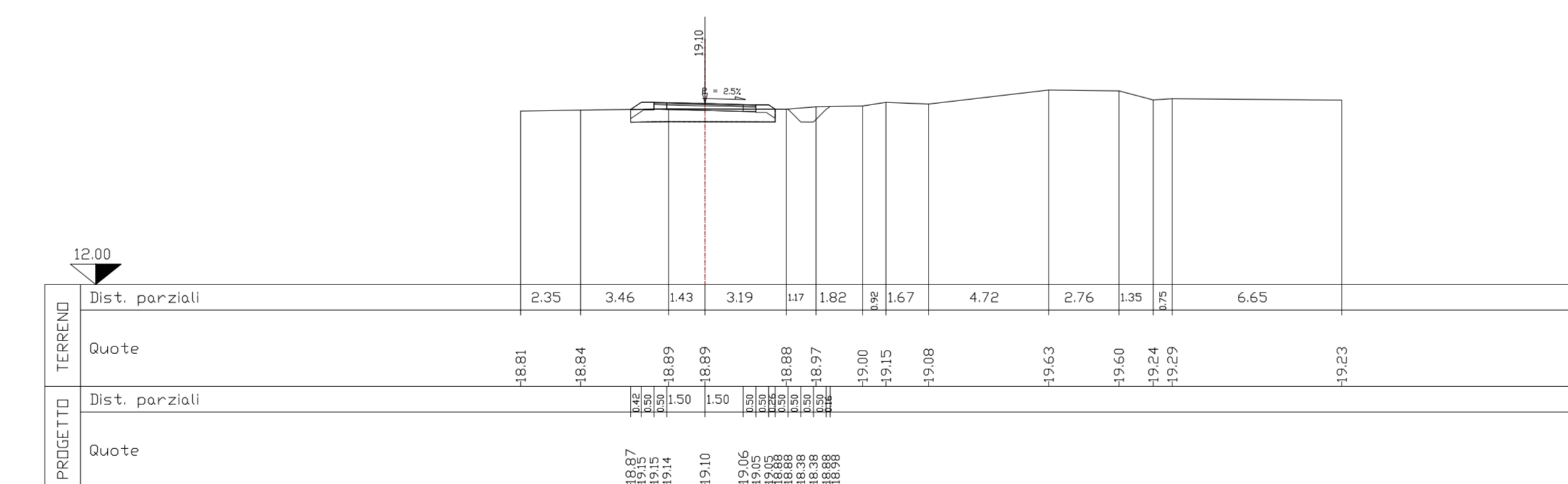
Asse di ricicatura n.26_NV13 6 PRDGR. 41.50 PARZ. 14.35

SEZIONE N. 6 table with columns: Item, Quantity, Unit. Includes items like Piano di posa, Bonifica, Scavo, Rilevato, etc.



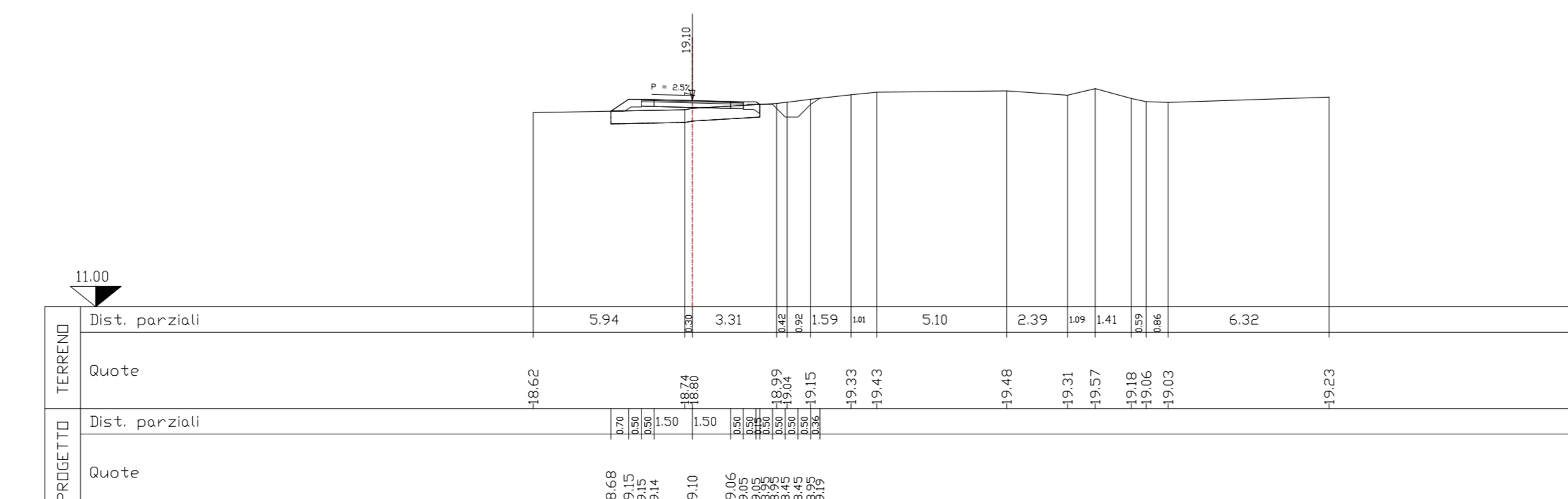
Asse di ricicatura n.26_NV13 7 PRDGR. 55.24 PARZ. 13.74

SEZIONE N. 7 table with columns: Item, Quantity, Unit. Includes items like Piano di posa, Bonifica, Scavo, Rilevato, etc.



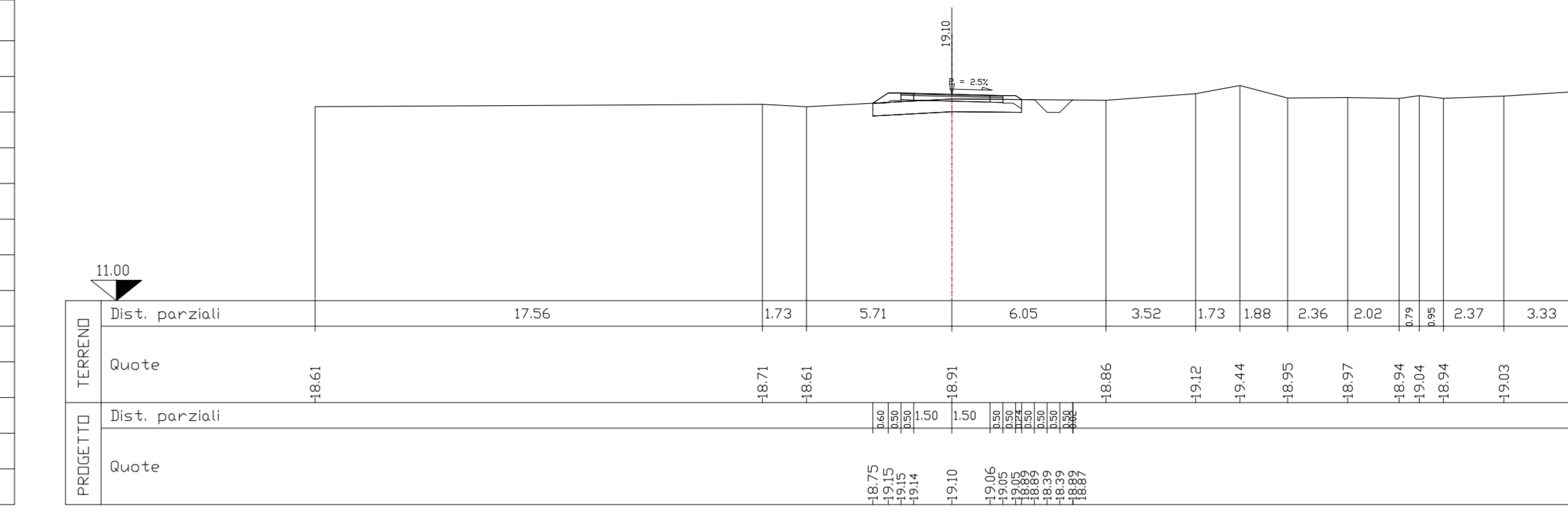
Asse di ricicatura n.26_NV13 8 PRDGR. 69.50 PARZ. 14.26

SEZIONE N. 8 table with columns: Item, Quantity, Unit. Includes items like Piano di posa, Bonifica, Scavo, Rilevato, etc.



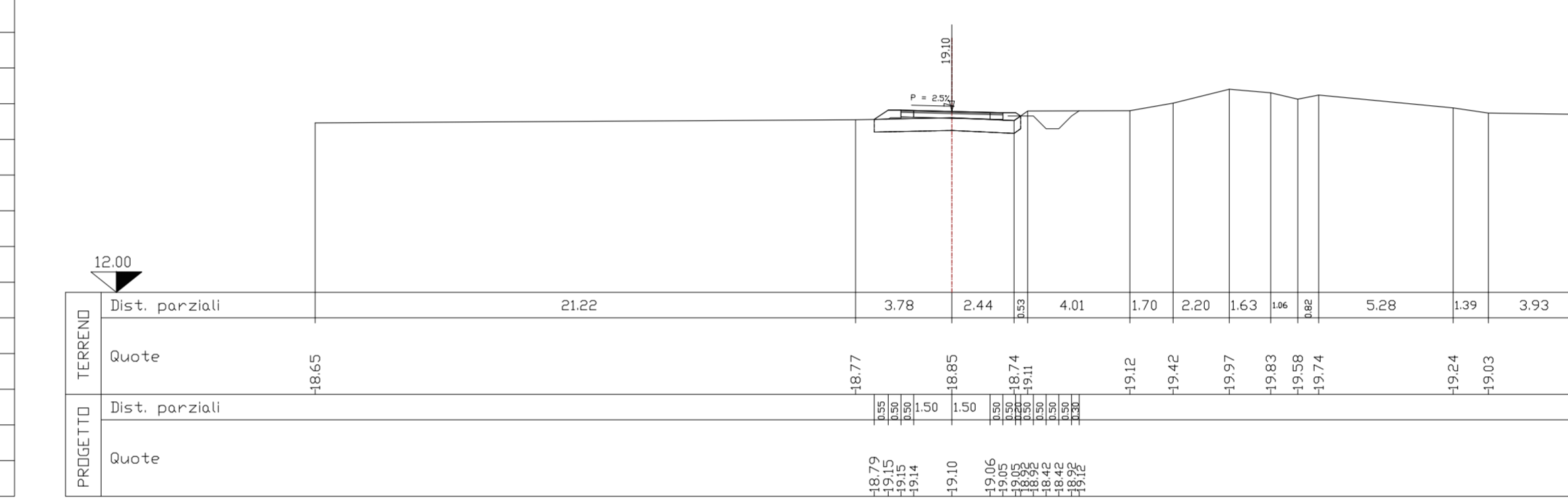
Asse di ricicatura n.26_NV13 9 PRDGR. 83.36 PARZ. 13.86

SEZIONE N. 9 table with columns: Item, Quantity, Unit. Includes items like Piano di posa, Bonifica, Scavo, Rilevato, etc.



Asse di ricicatura n.26_NV13 10 PRDGR. 91.22 PARZ. 7.86

SEZIONE N. 10 table with columns: Item, Quantity, Unit. Includes items like Piano di posa, Bonifica, Scavo, Rilevato, etc.



Project information block including: COMMITENTE (RFI), DIREZIONE LAVORI (ITALFERR), APPALTATORE (AGOSTINO COSTRUZIONI), PROGETTAZIONE (HUB), PROGETTO ESECUTIVO (LINEA BARI-LECCE - RIASETTO NODO DI BARI), and a revision table.