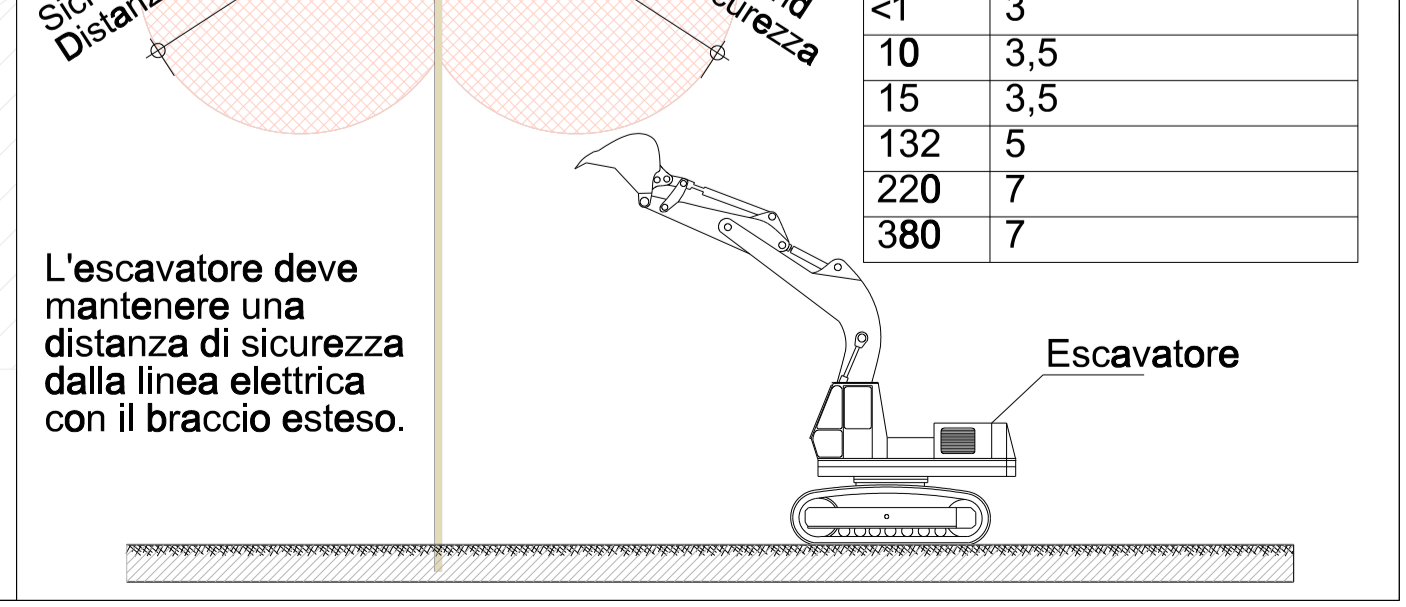
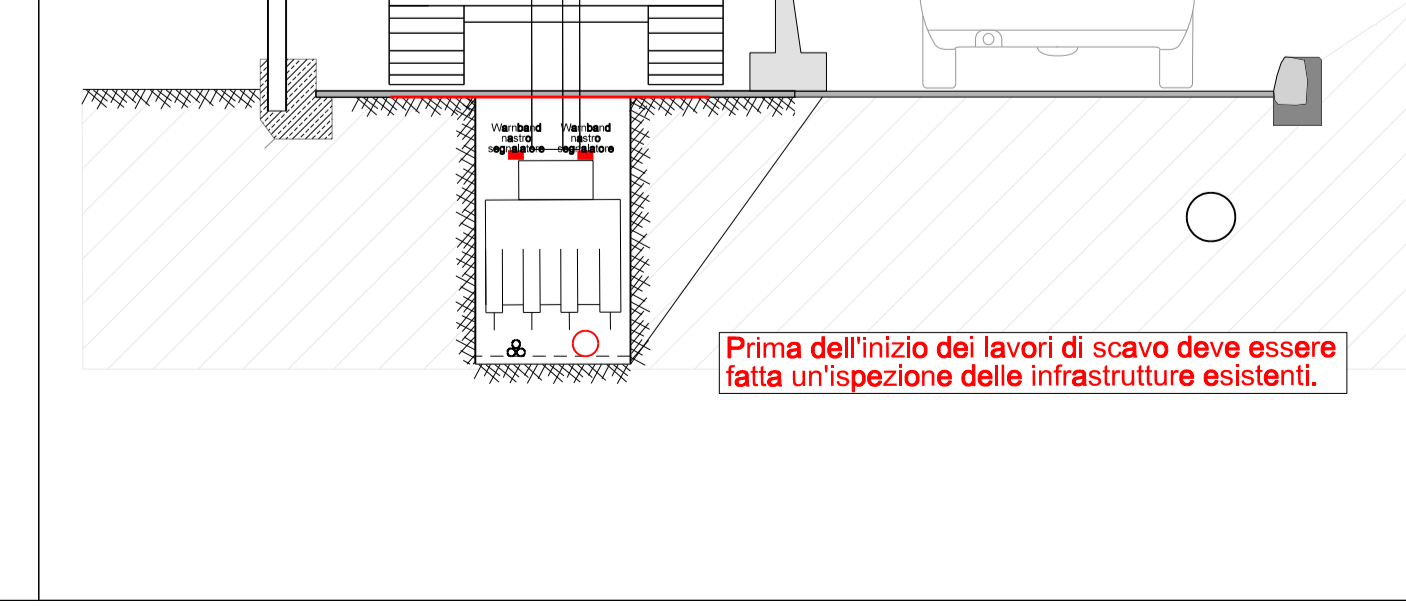
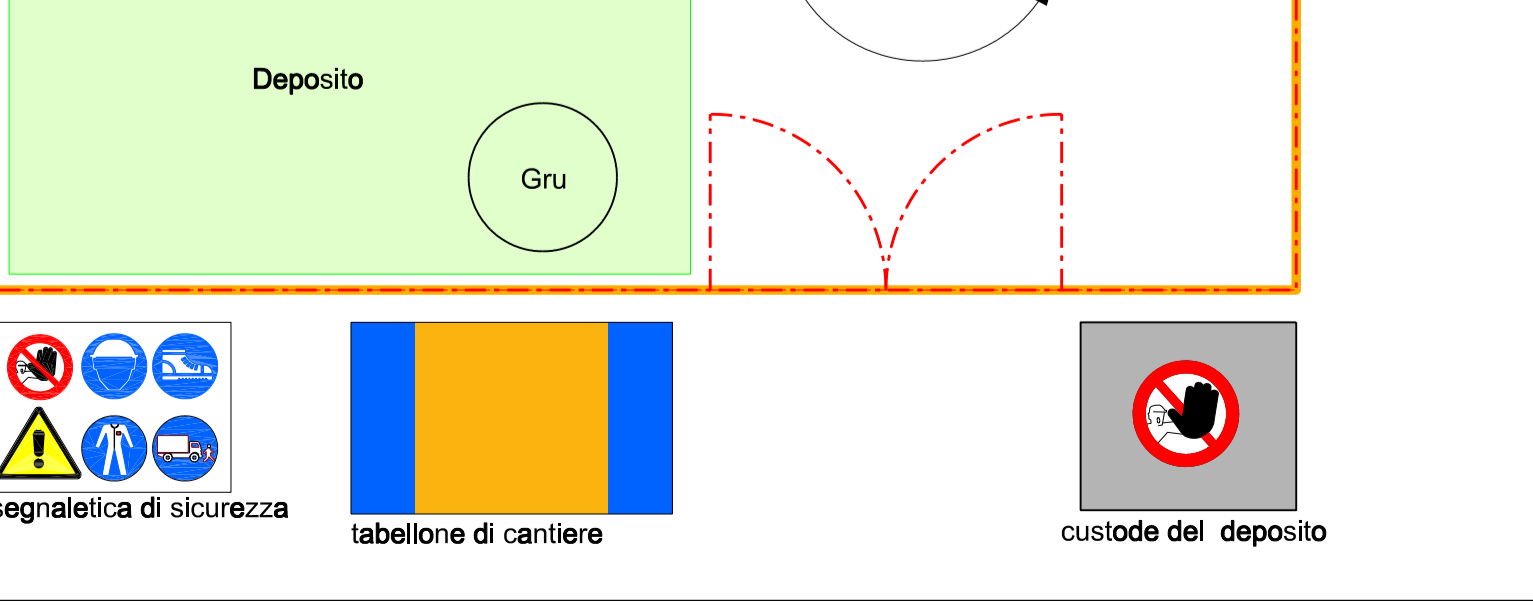
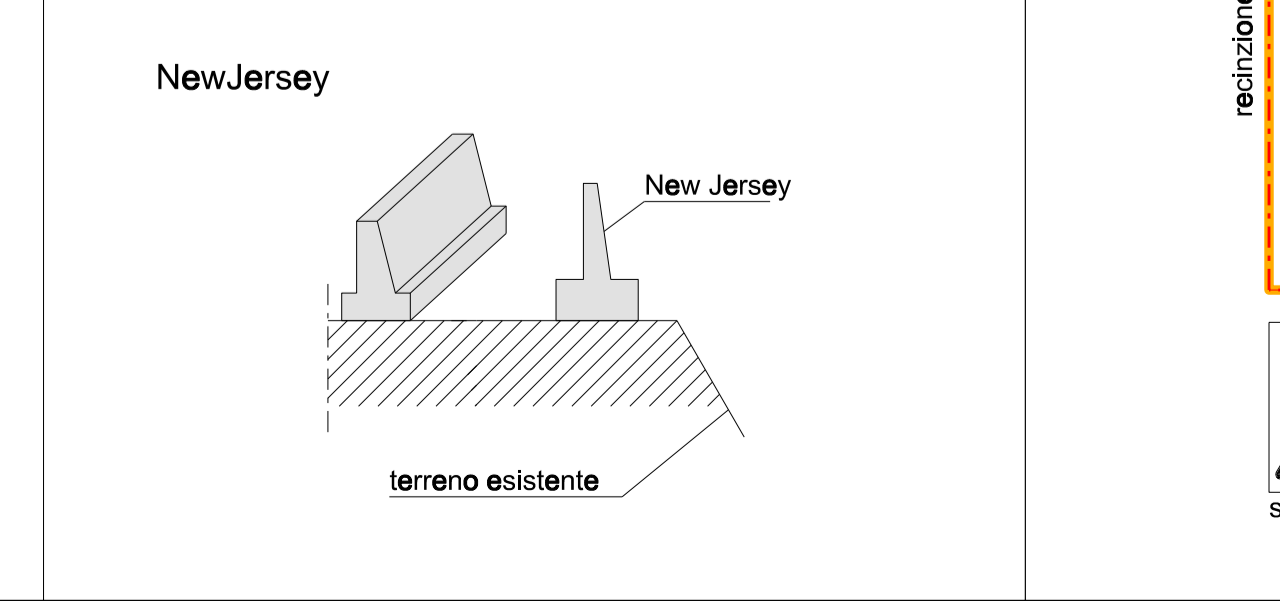
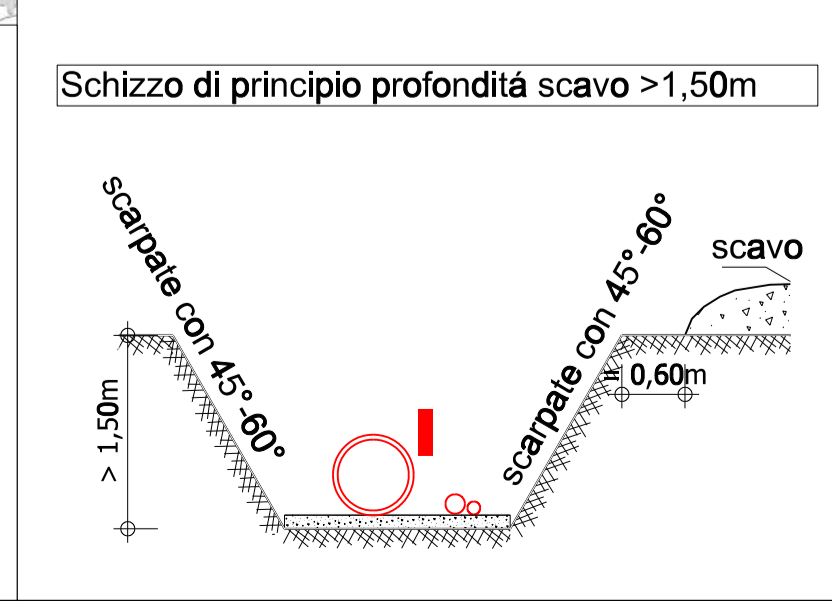
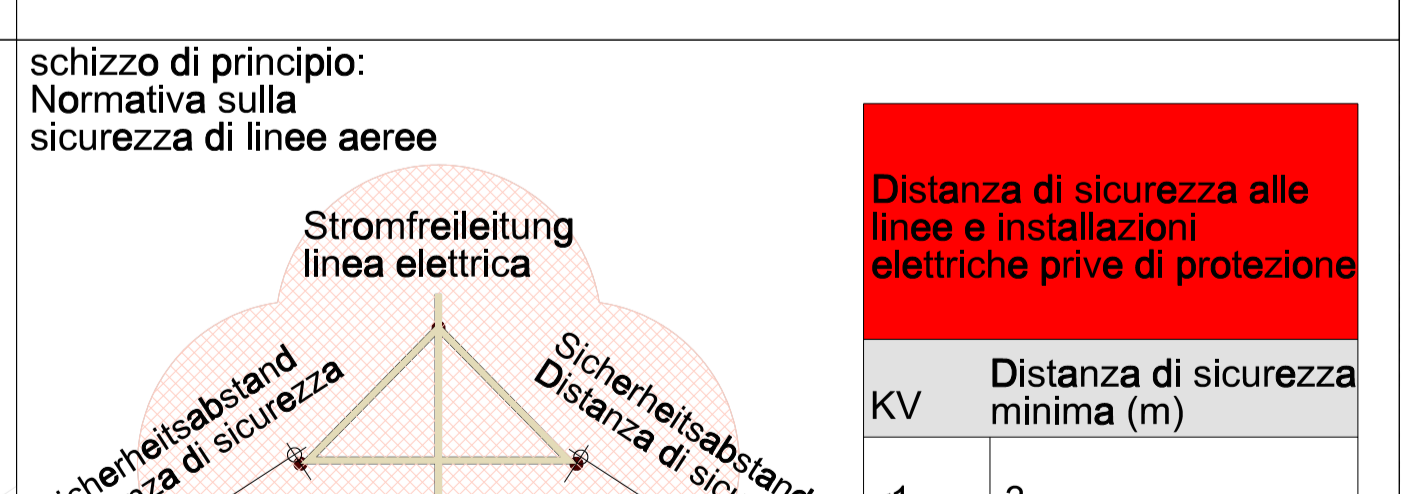
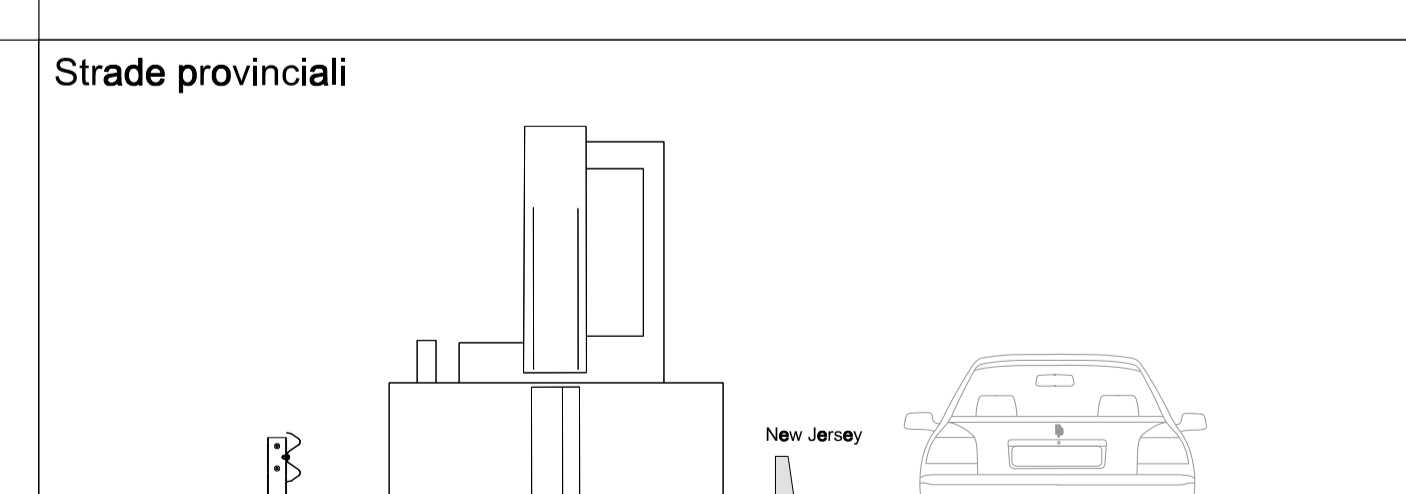
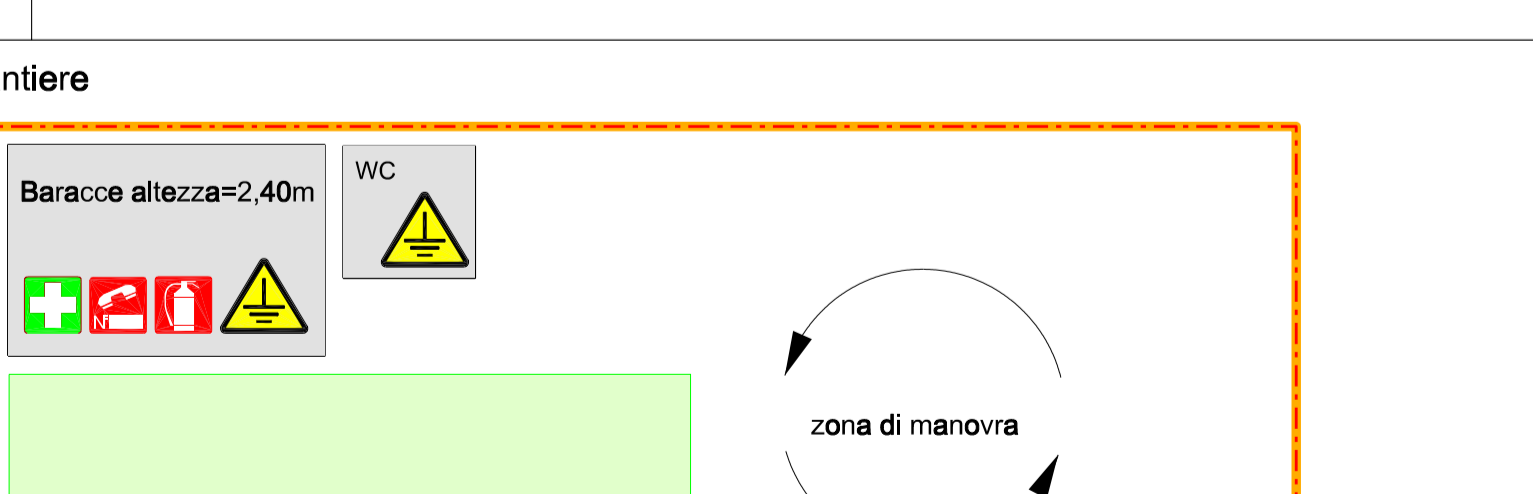
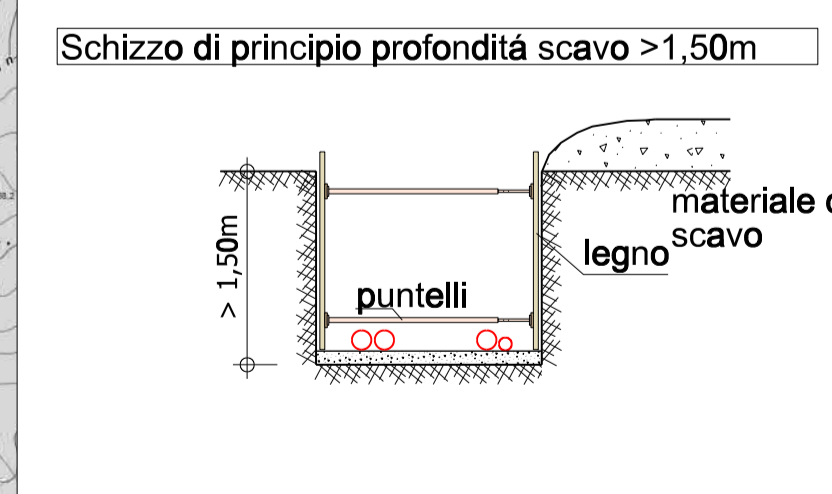
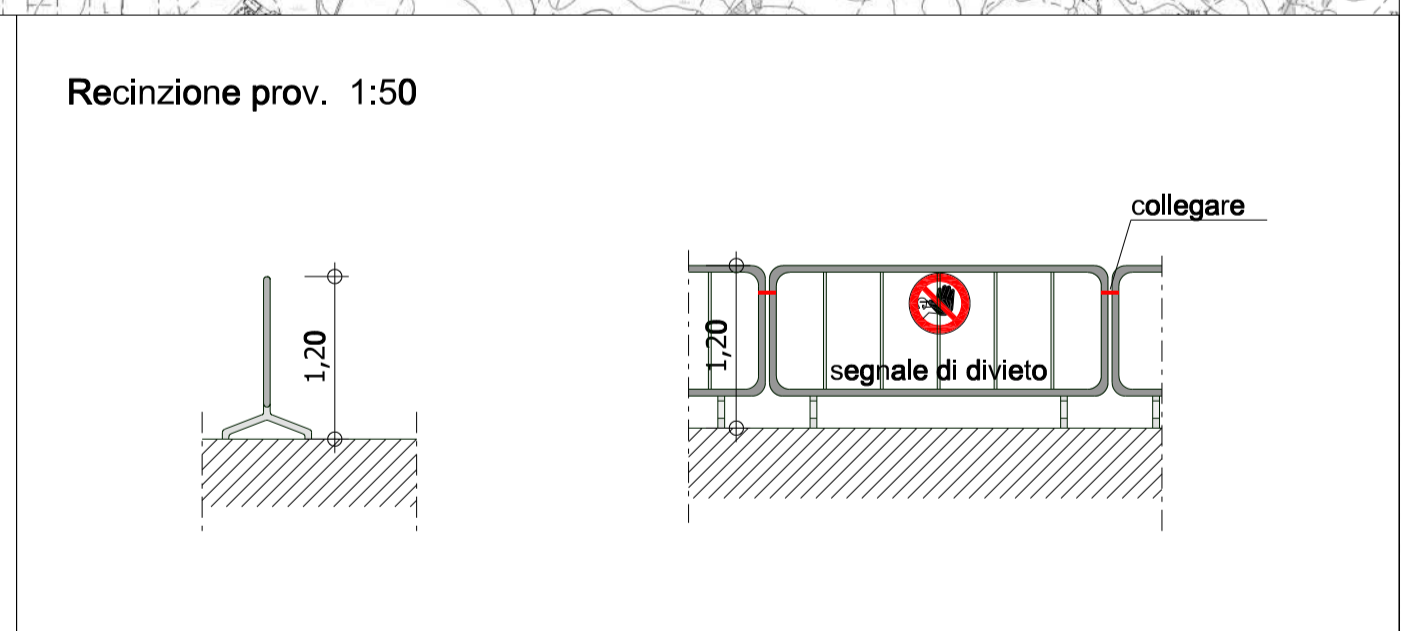
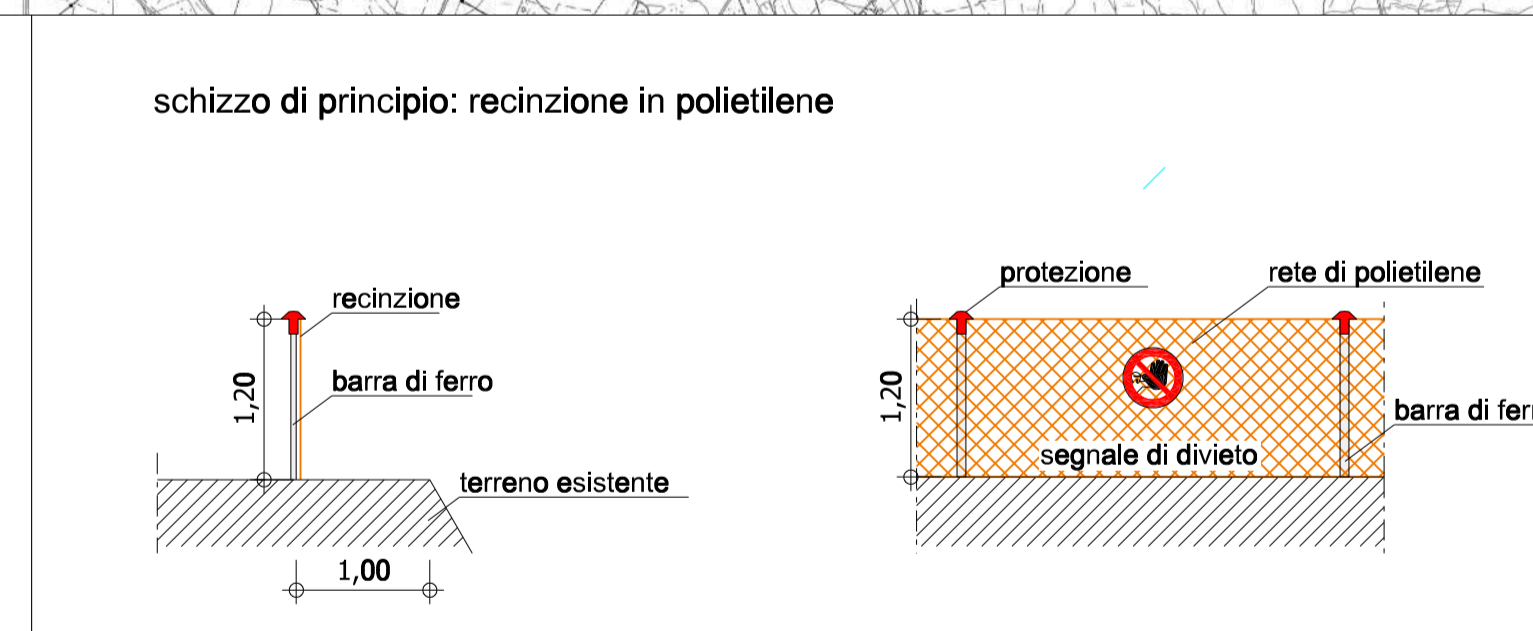
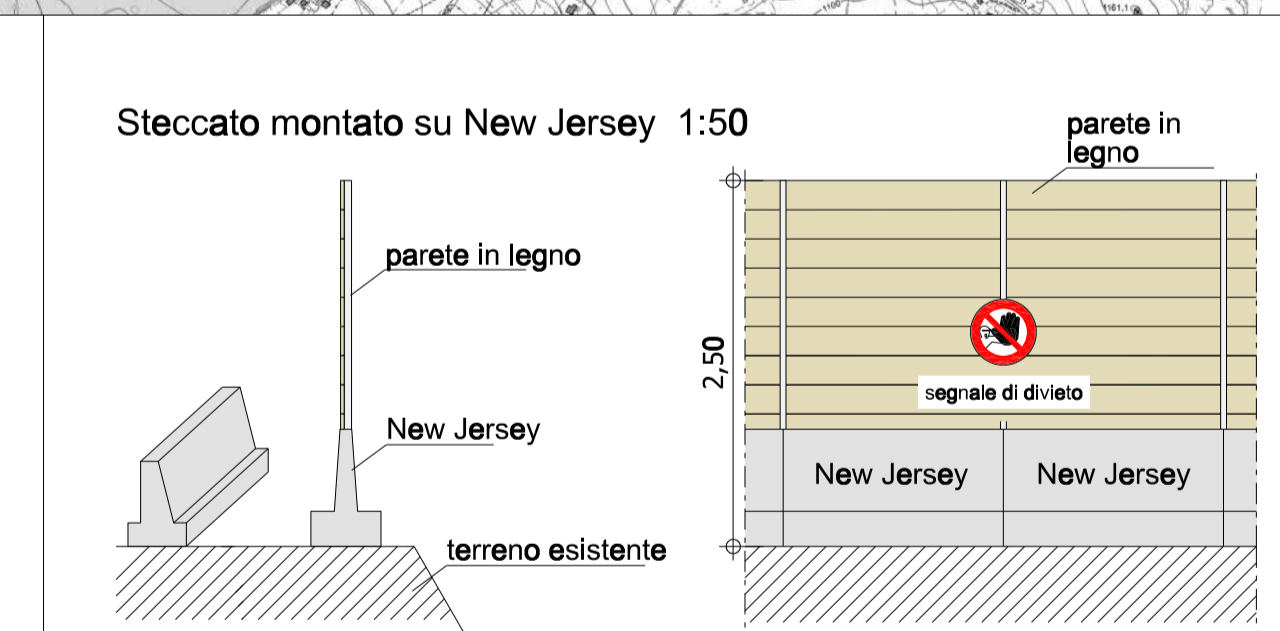
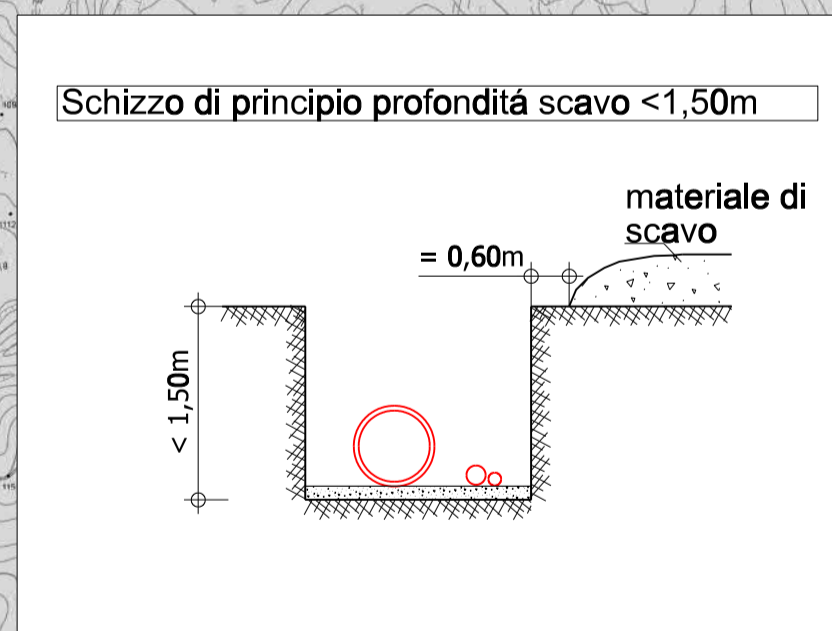
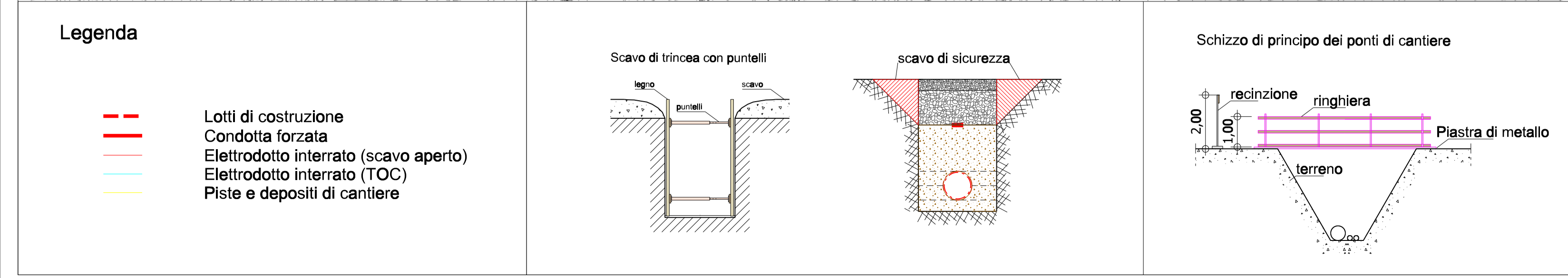
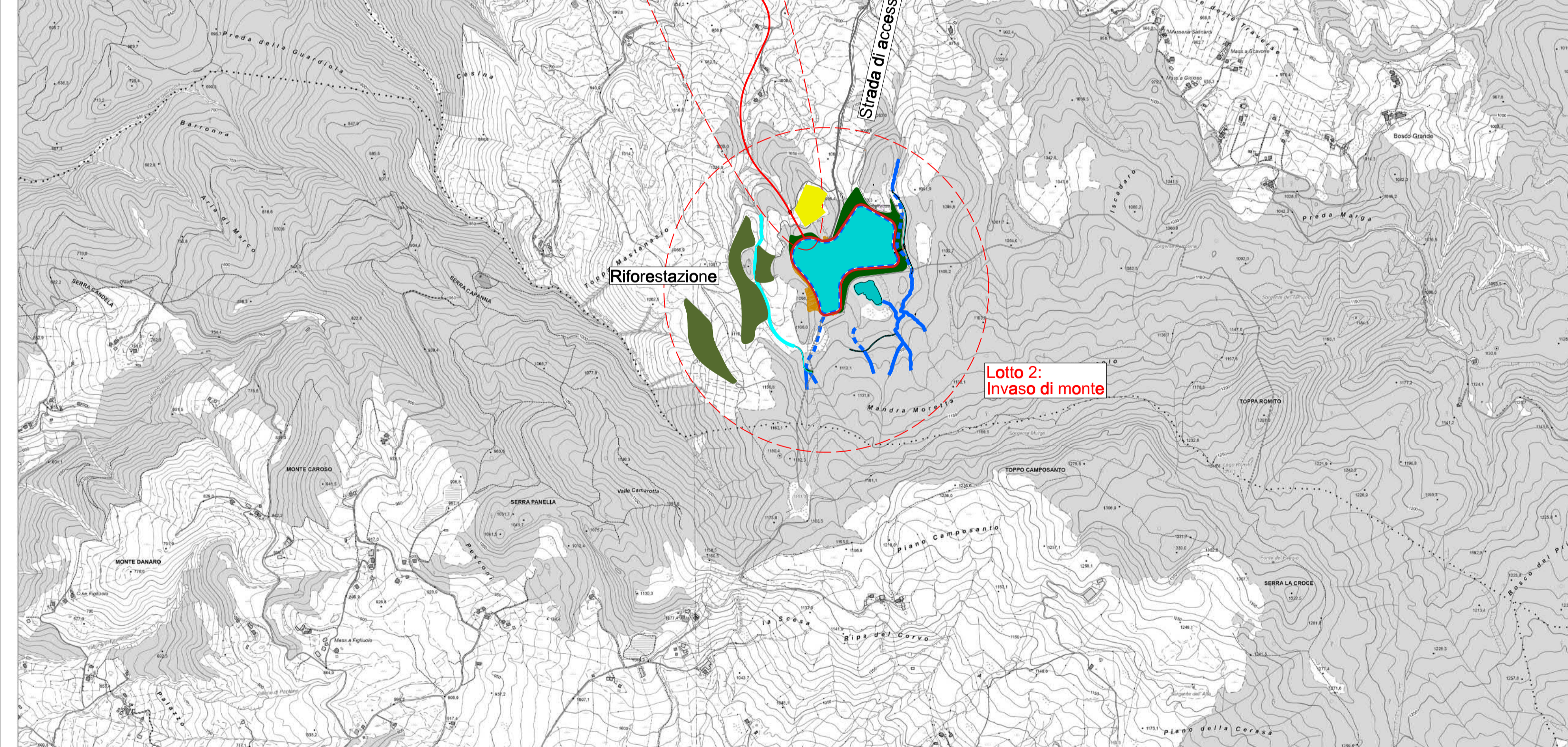


Esposizione di un tabellone di cantiere. La posizione viene decisa dal direttore dei lavori.



BESCHILDERUNG BAUSTELLEN-EINRICHTUNG - Gesamtes Bauwerk  
SEGNALLETICA ALLESTIMENTO CANTIERE - Edificio totale

Baustelleneinfahrt Ingresso cantiere	Öl-Treibstoffe Olio e carburante
Elektroenergiekabine Distributore e cabina elettrica	Umklekabine + Unterkunft Spogliatoio + locale di riposo
Baubüro WC Duschen Ufficio cantiere WC docce	Kreislauge Sega di circolare
Betonieranlage Betoniera	Eisenbiege Piega ferri
Stofflager Deposito sostanze	Geräteleger Deposito attrezzature

Regione Basilicata  
Provincia di Potenza

**Progetto Definitivo**

RUOTI ENERGIA S.r.l.  
Piazza del Grano 3  
I-39100 Bolzano (BZ)

Impianto di accumulo idroelettrico mediante pompaggio denominato "Mandra Moretta" e relative opere connesse ed infrastrutture indispensabili nei Comuni di Ruoti, Avigliano, Potenza, Pietragalla, Cancellara e Viglio Basilicata (PZ)

Catografia generale di cantiere

progetto: 14.12.2022  
redatto: 14.12.2022  
cantiere: 28.09.2023  
rev: 01

scala: 1:15.000  
elaborato n.: PD-EP.31

Studio di Geologia e Geoingegneria  
Dott. Gian Antonio De Carlo

Ing. Pierluigi Patscheider & Partners S.r.l.  
I-39024 Malnatese (BZ) - giuniorstrasse 5/a, via giuniorstrasse 5/a - 39100 Bolzano - ingegner@patscheider.it  
tel. +39 0471 81 00 00 fax. +39 0471 81 51 01  
info@pp.bz.it www.patscheiderpartner.it

Die genaue Beschilderung wird mit dem Koordinator in der Ausführungsphase definiert!  
La segnaletica esatta verrà definita con il coordinatore in fase di esecuzione!