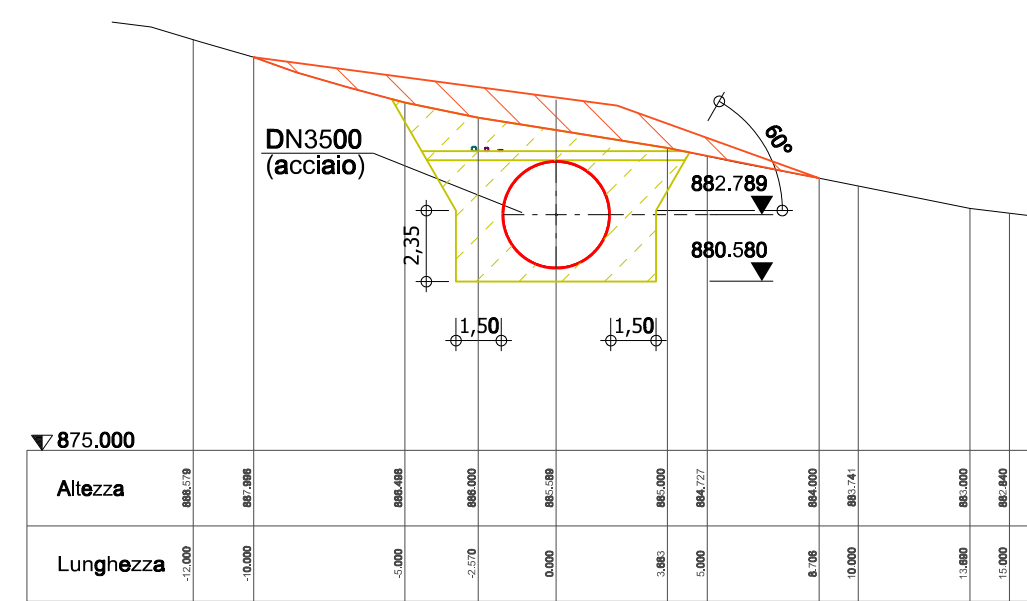
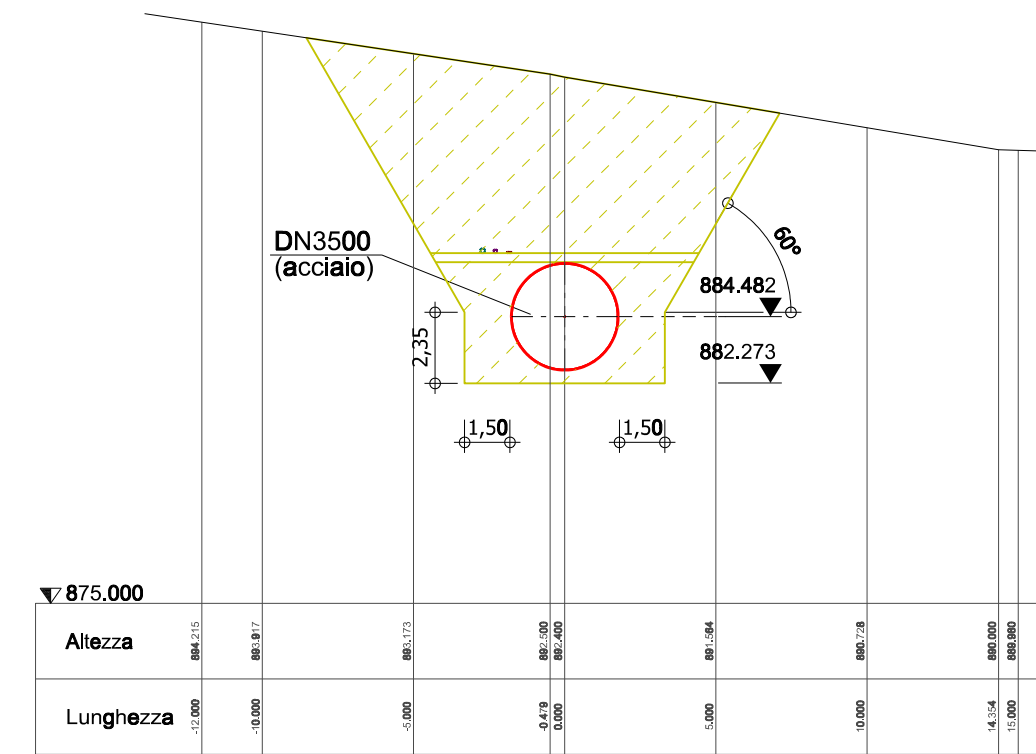


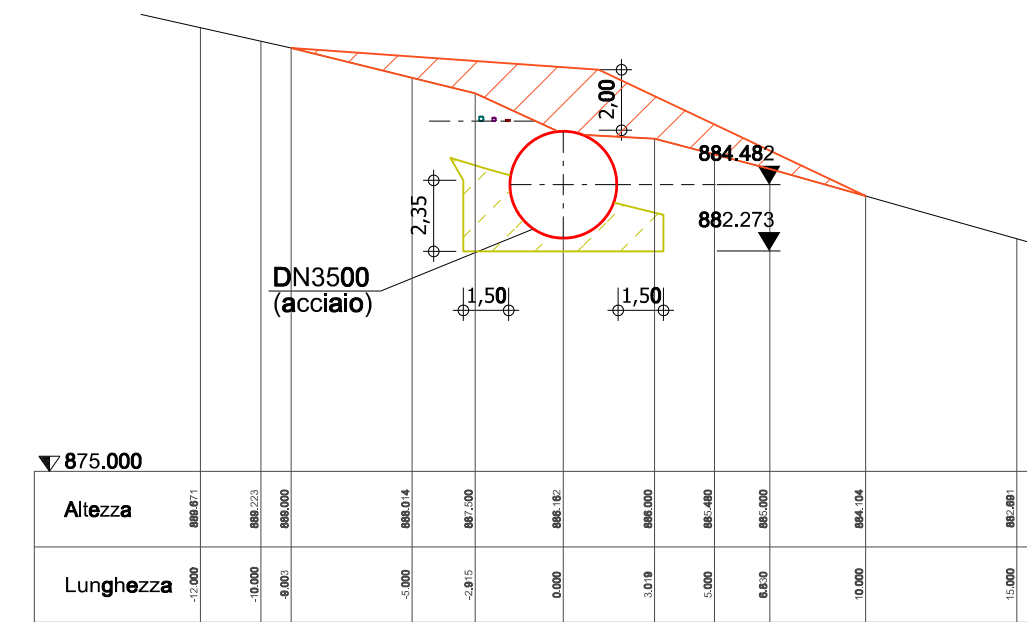
Sezione: 1+700
Scala 1:250



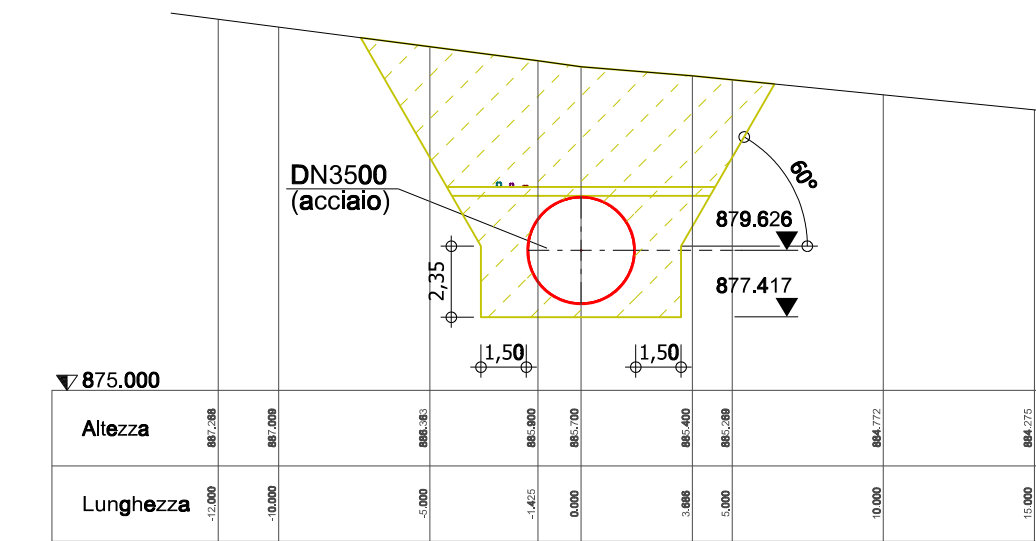
Sezione: 1+800
Scala 1:250



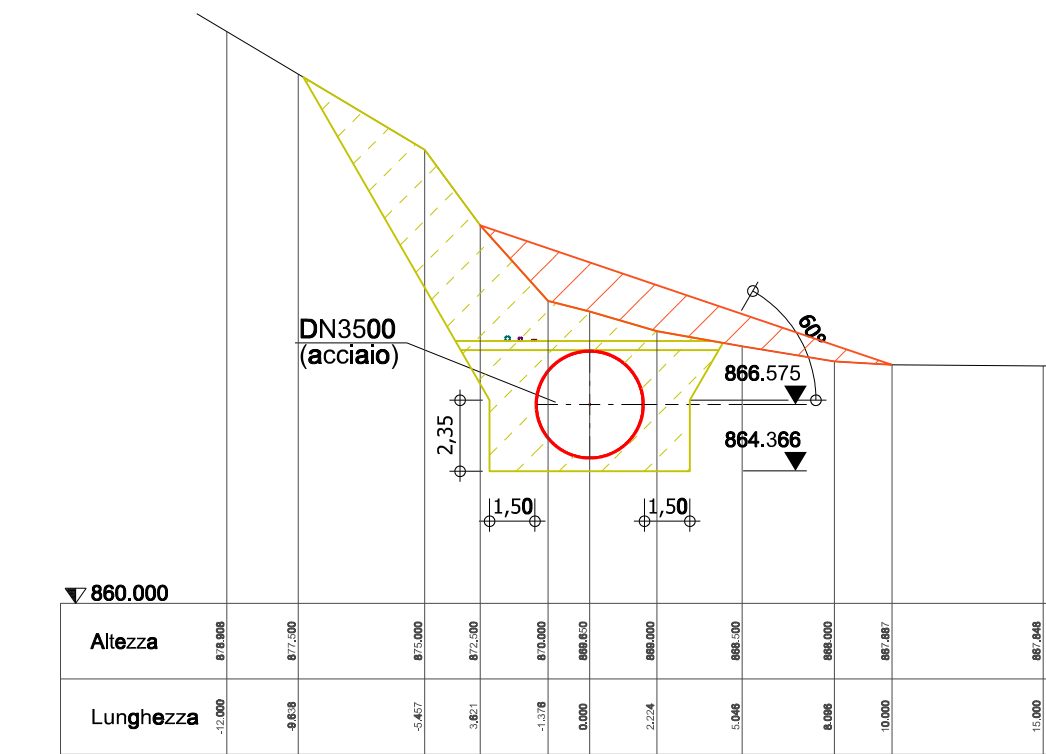
Sezione: 1+900
Scala 1:250



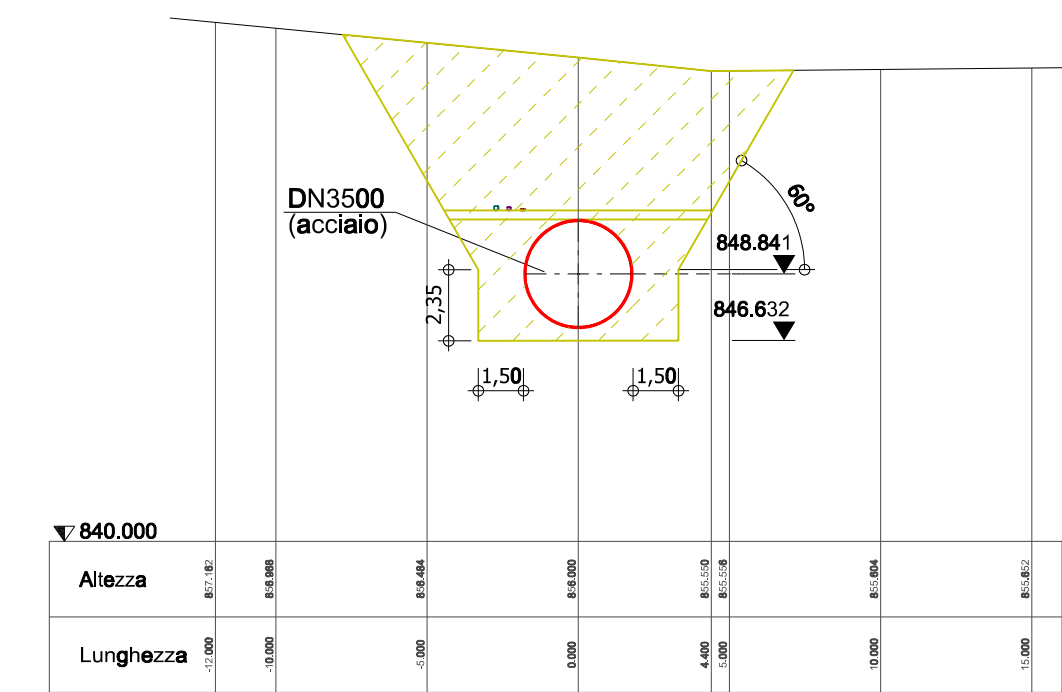
Sezione: 2+000
Scala 1:250



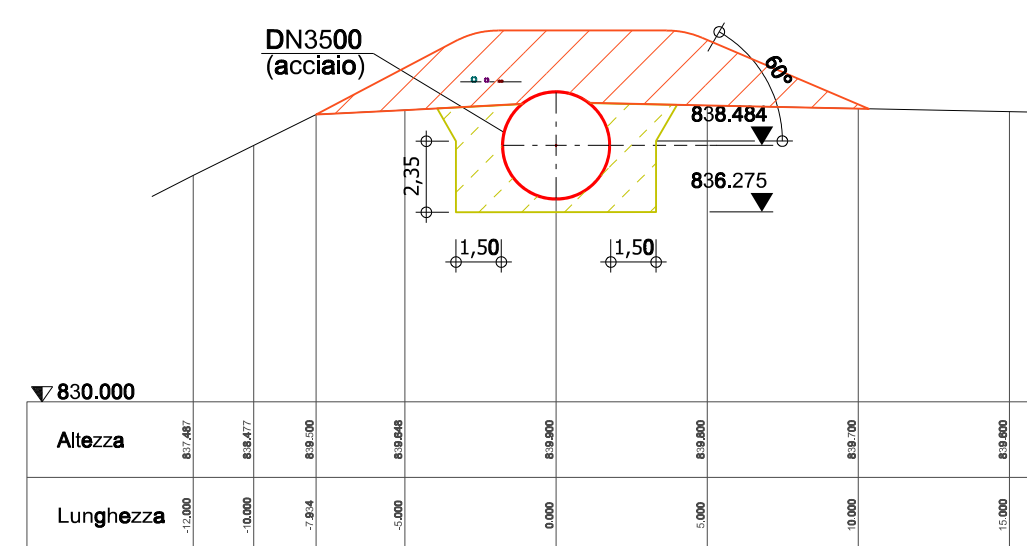
Sezione: 2+100
Scala 1:250



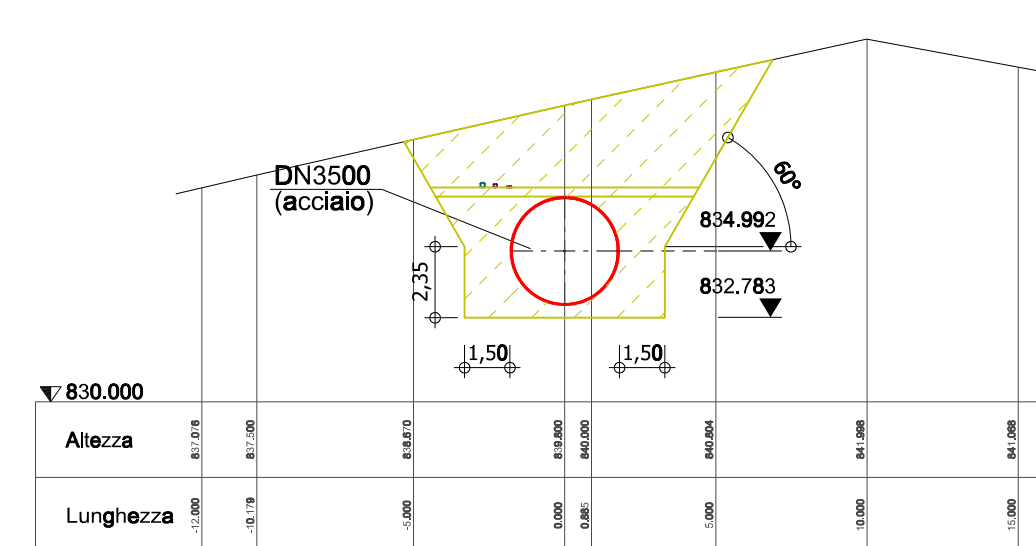
Sezione: 2+200
Scala 1:250



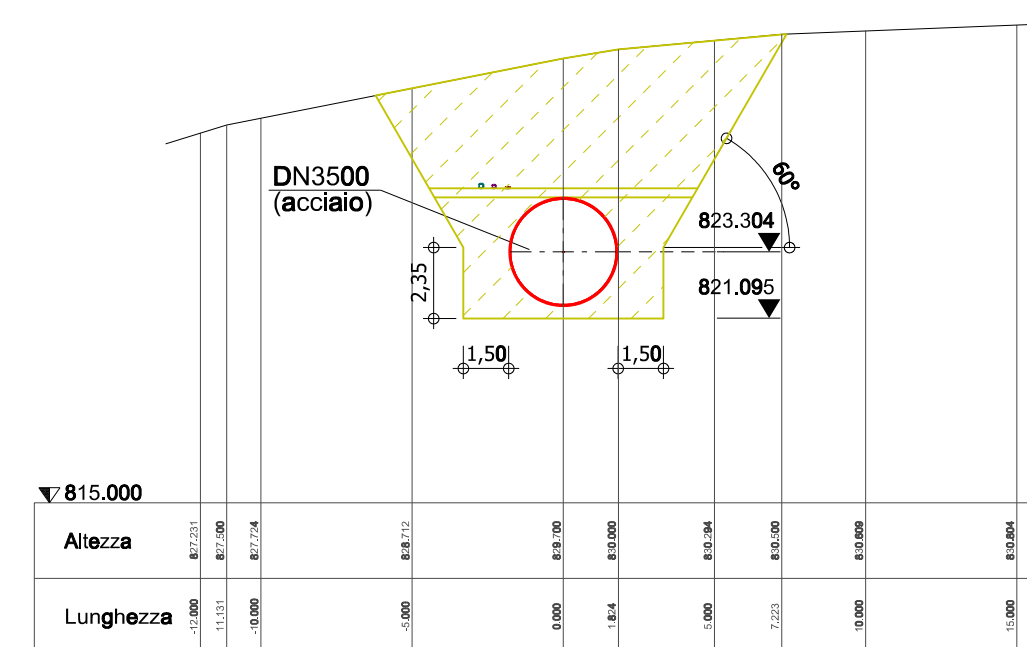
Sezione: 2+300
Scala 1:250



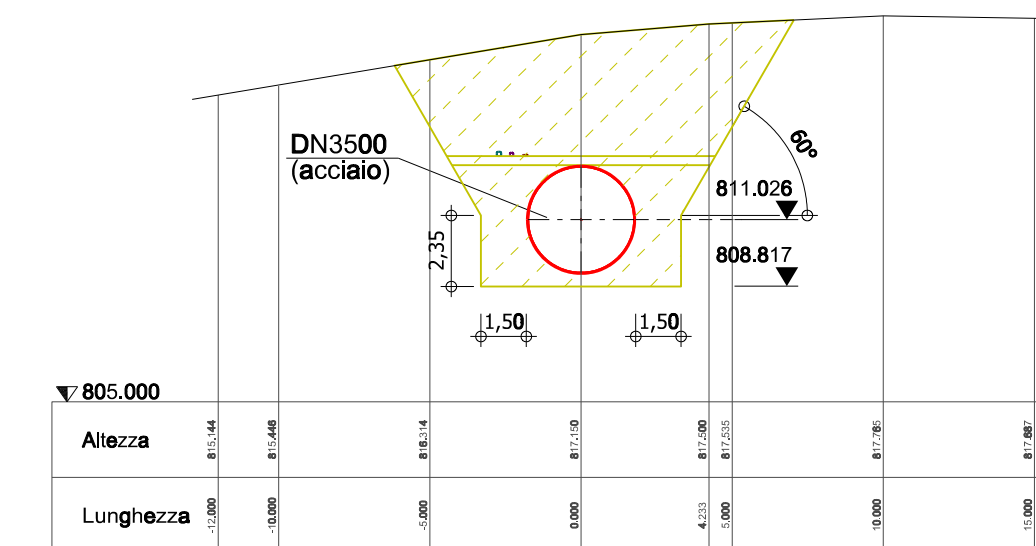
Sezione: 2+400
Scala 1:250



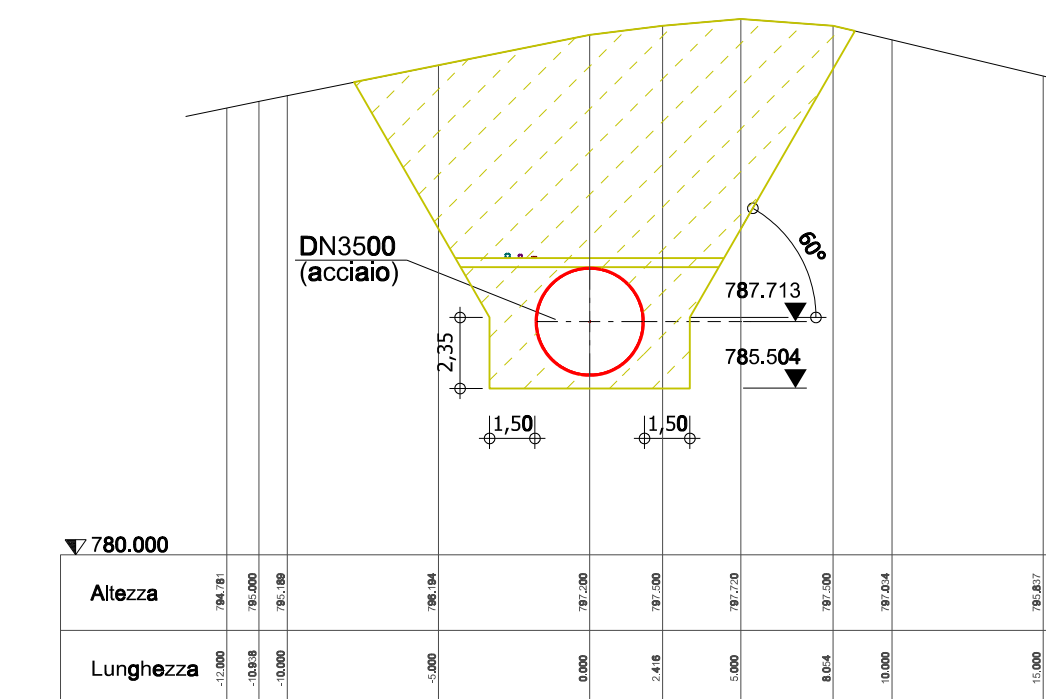
Sezione: 2+500
Scala 1:250



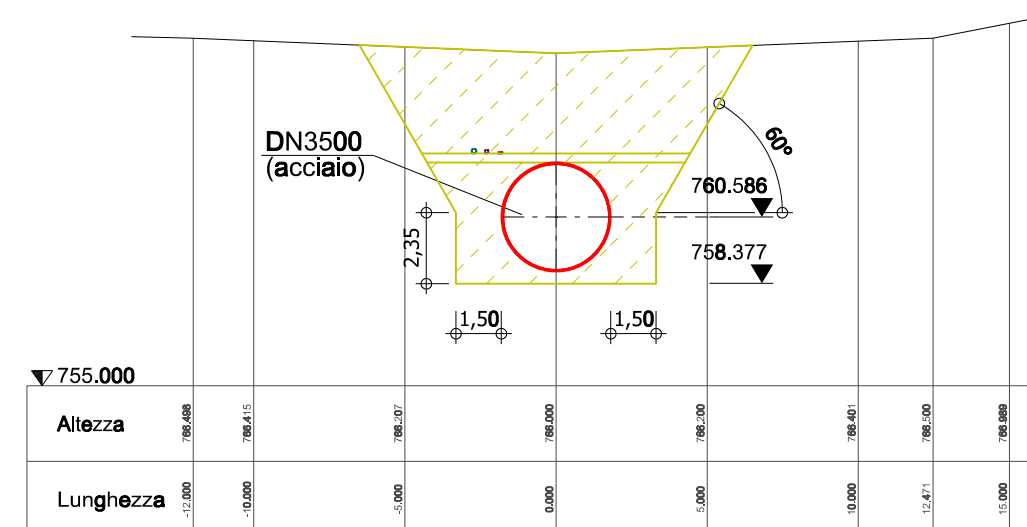
Sezione: 2+600
Scala 1:250



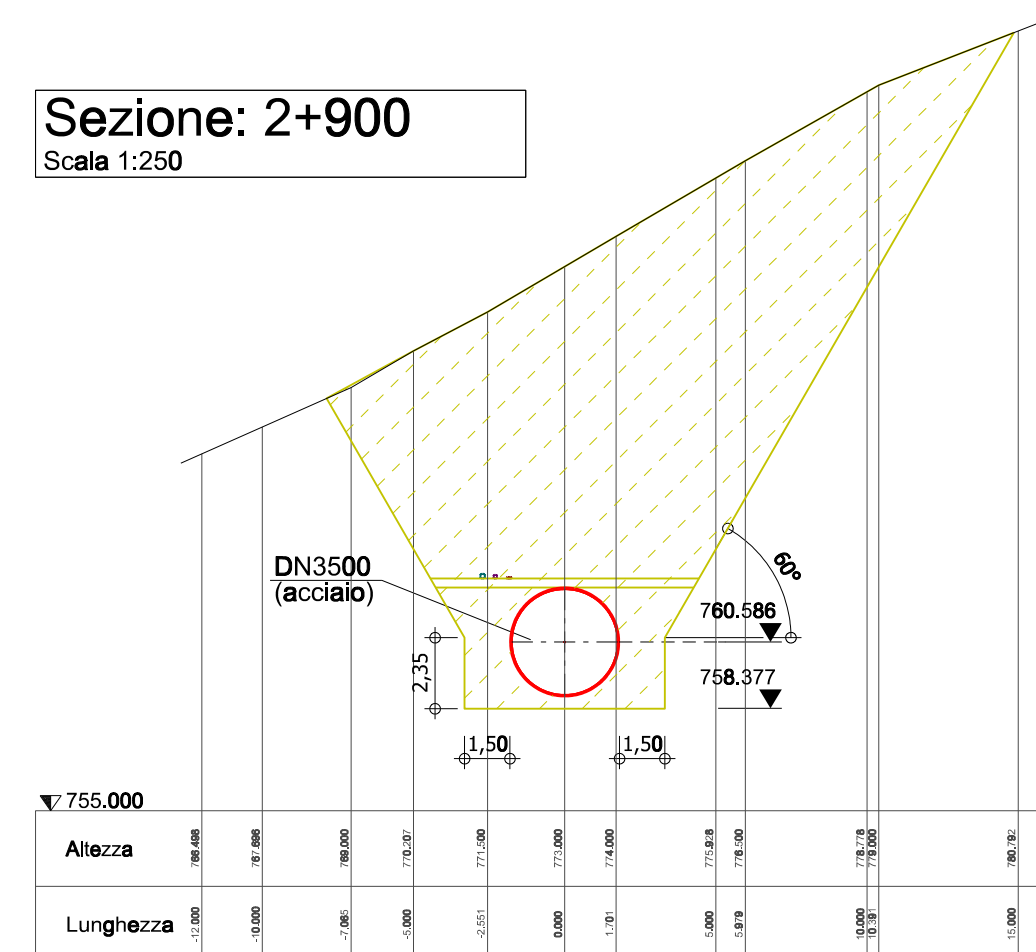
Sezione: 2+700
Scala 1:250



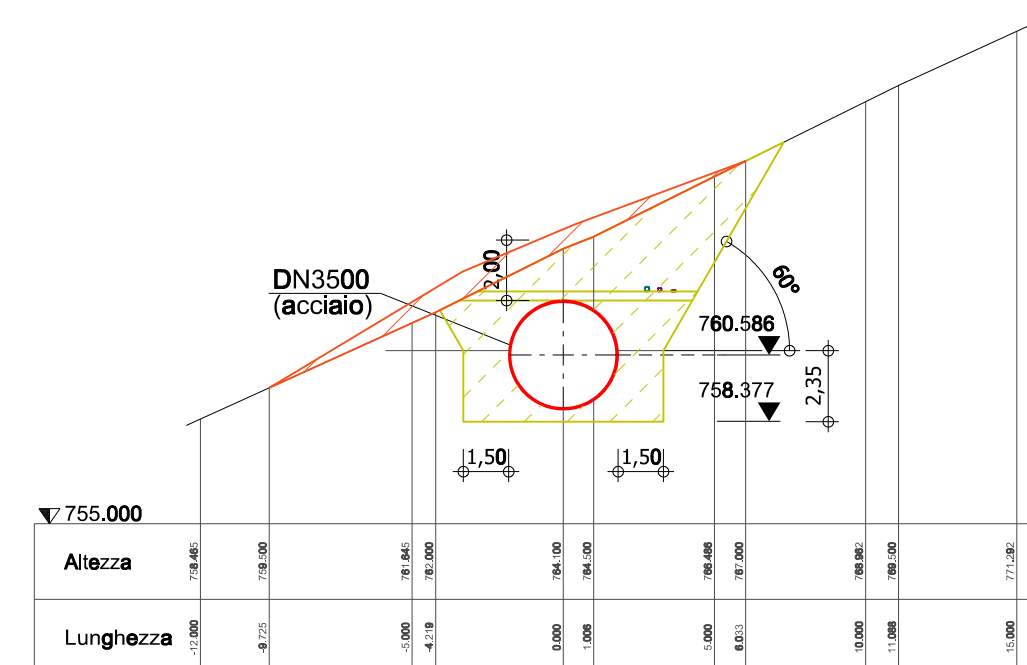
Sezione: 2+800
Scala 1:250



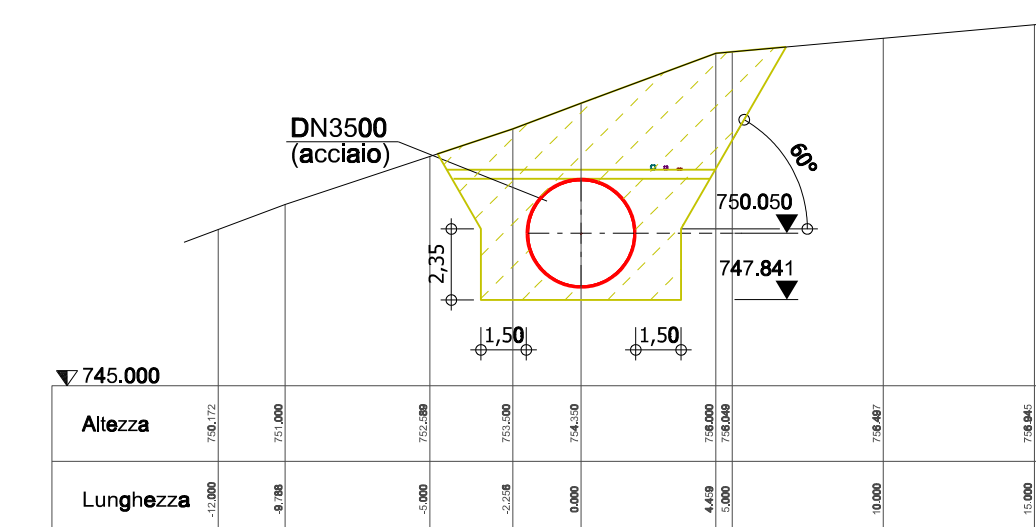
Sezione: 2+900
Scala 1:250



Sezione: 3+000
Scala 1:250



Sezione: 3+100
Scala 1:250



Legenda

- Tritubo DN50
- Cavi di comando
- Cavidotto DN125
- Servizi ausiliari
- Cavidotto DN160
- Servizi ausiliari
- DN3500 acciaio
- Scavo e riporto
- Riporto

RUOTIENERGIA Regione Basilicata
Provincia di Potenza



ORDINE DEGLI INGEGNERI
DELLA PROV. DI BOLZANO
Dr. Ing. WALTER GOSTNER
n. 7191
INGENIEURKAMMER
DES SÜDTIROLER SÜDTIROL

Progetto Definitivo

RUOTI ENERGIA S.r.l.
Piazza del Grano 3
I-39100 Bolzano (BZ)
Impianto di accumulo idroelettrico mediante pompaggio denominato "Mandra Moretta" e relative opere connesse ed infrastrutture indispensabili nei Comuni di Ruoti, Avigliano, Potenza, Pietragalla, Cancellara e Vaglio Basilicata (PZ)
Condotta forzata: sezioni trasversali 2/3

redatto	LF	01.12.2022	a	LF	28.09.2023	Rev	01	scala	1:250	elaborato n.	PD-EP.21.4.2
controlato	b	28.09.2023	c								
pagina		1	di		n° progetto		11-213				

Geo Studio di Geologia e Geotecnica
Dot. Geol. Antonio De Carlo

pat Schneiderpartner
INGENIEUR S. R. L.
Ingenieur Patschneider & Partner S.r.l.
I-39024 malts/malles (BZ) - gliumserstraße 5/x via gliorenza
I-39100 bozen/bolzano - negrellstraße 13/c via negrell
a-6100 schweiz - müdelstrasse 6
tel. +39 0473 83 05 05 fax +39 0473 83 53 01
info@sp.bz.it www.patschneiderpartner.it