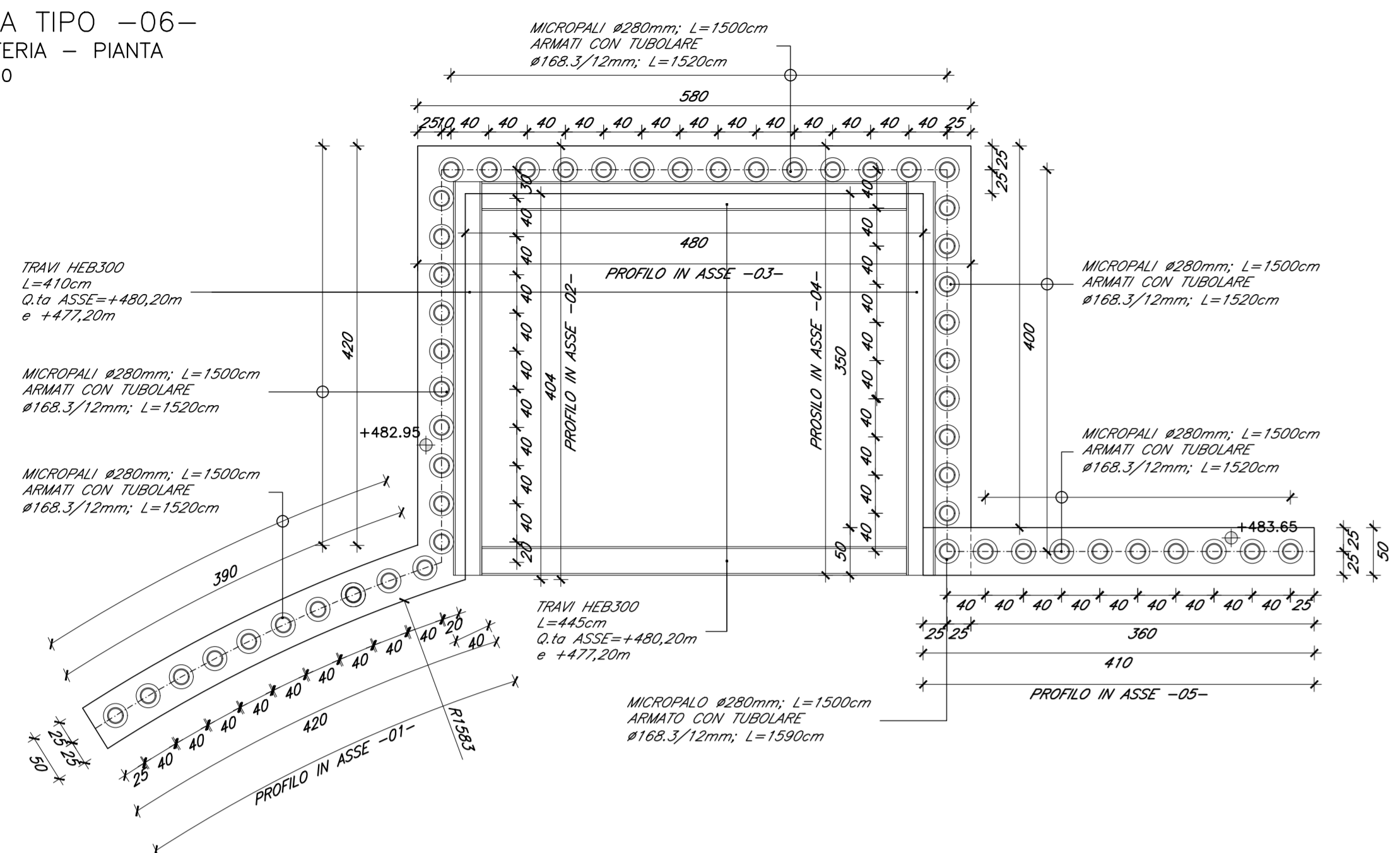
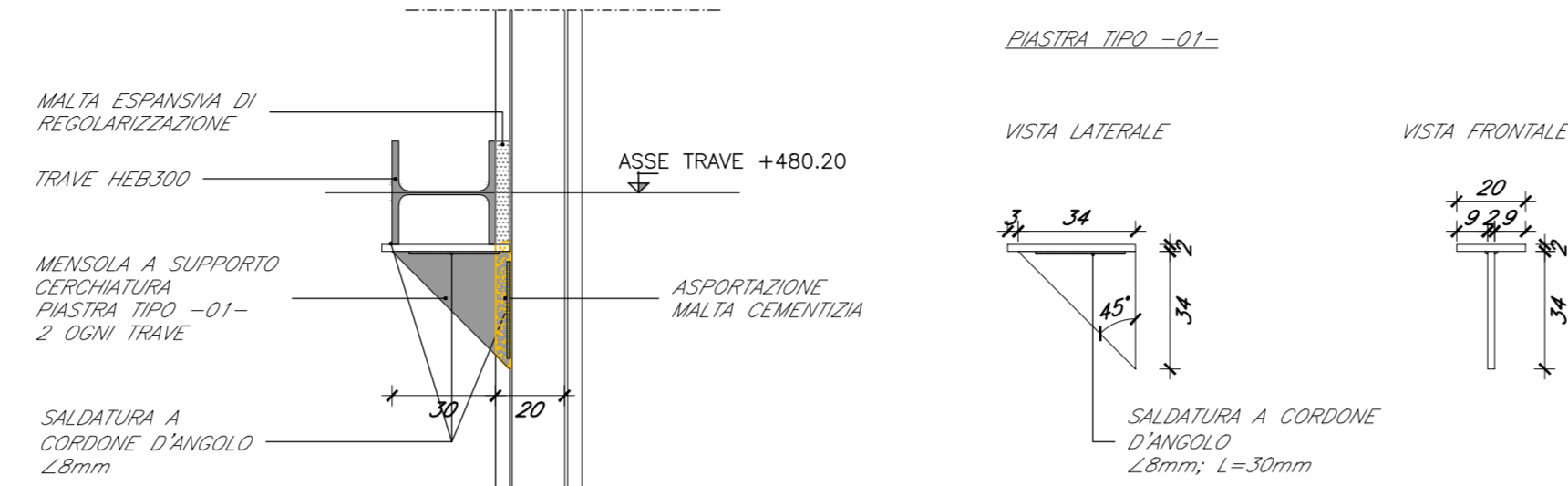


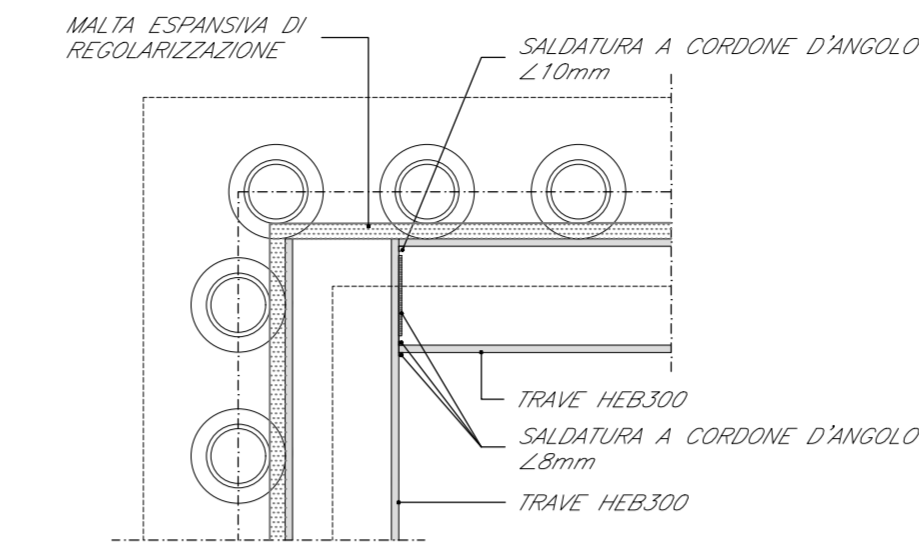
PARATIA TIPO -06-  
CARPENTERIA - PIANTA  
SCALA 1:50



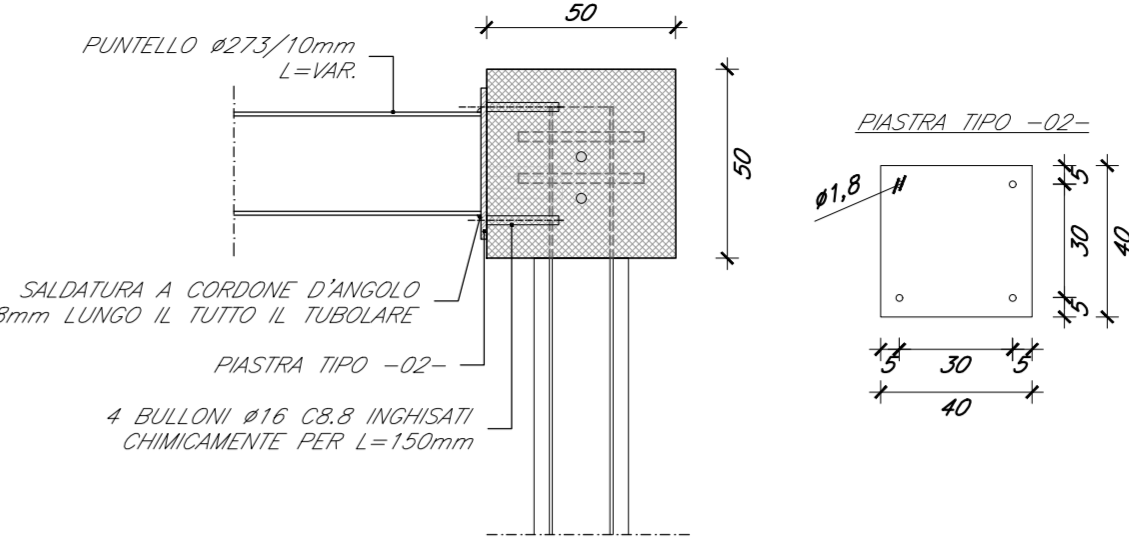
PARATIA TIPO -06-  
DETTAGLIO MENSOLA A SOSTEGNO CERCHIATURA  
SCALA 1:20



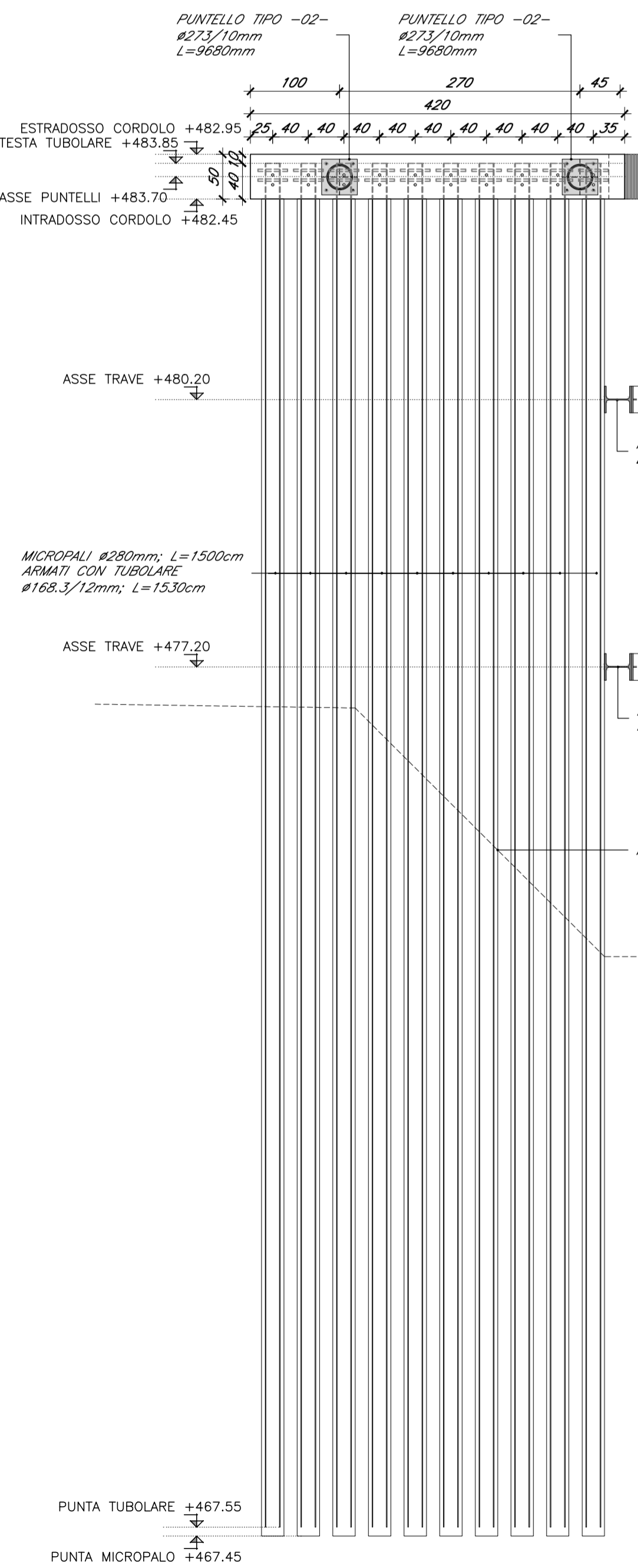
PARATIA TIPO -06-  
DETTAGLIO CONNESSIONE CERCHIATURA  
SCALA 1:20



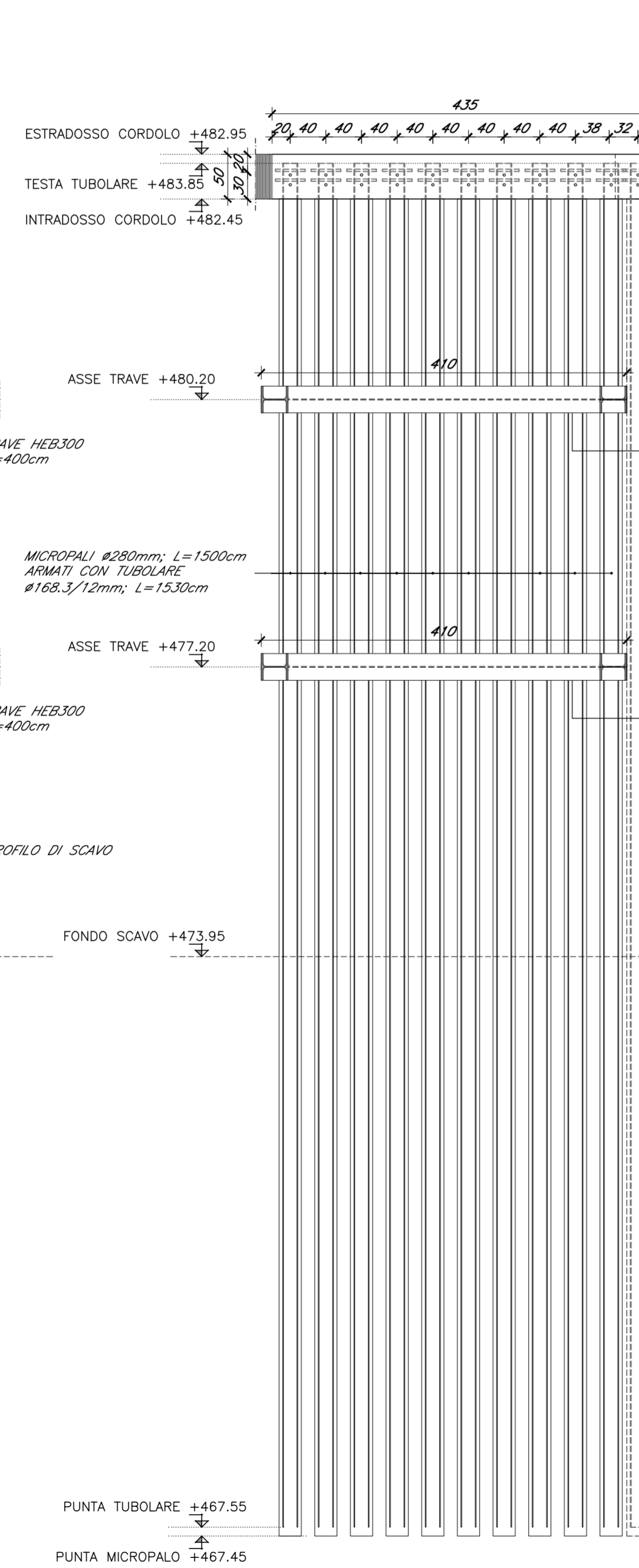
PARATIA TIPO -06-  
DETTAGLIO CONNESSIONE PUNTELLI  
SCALA 1:20



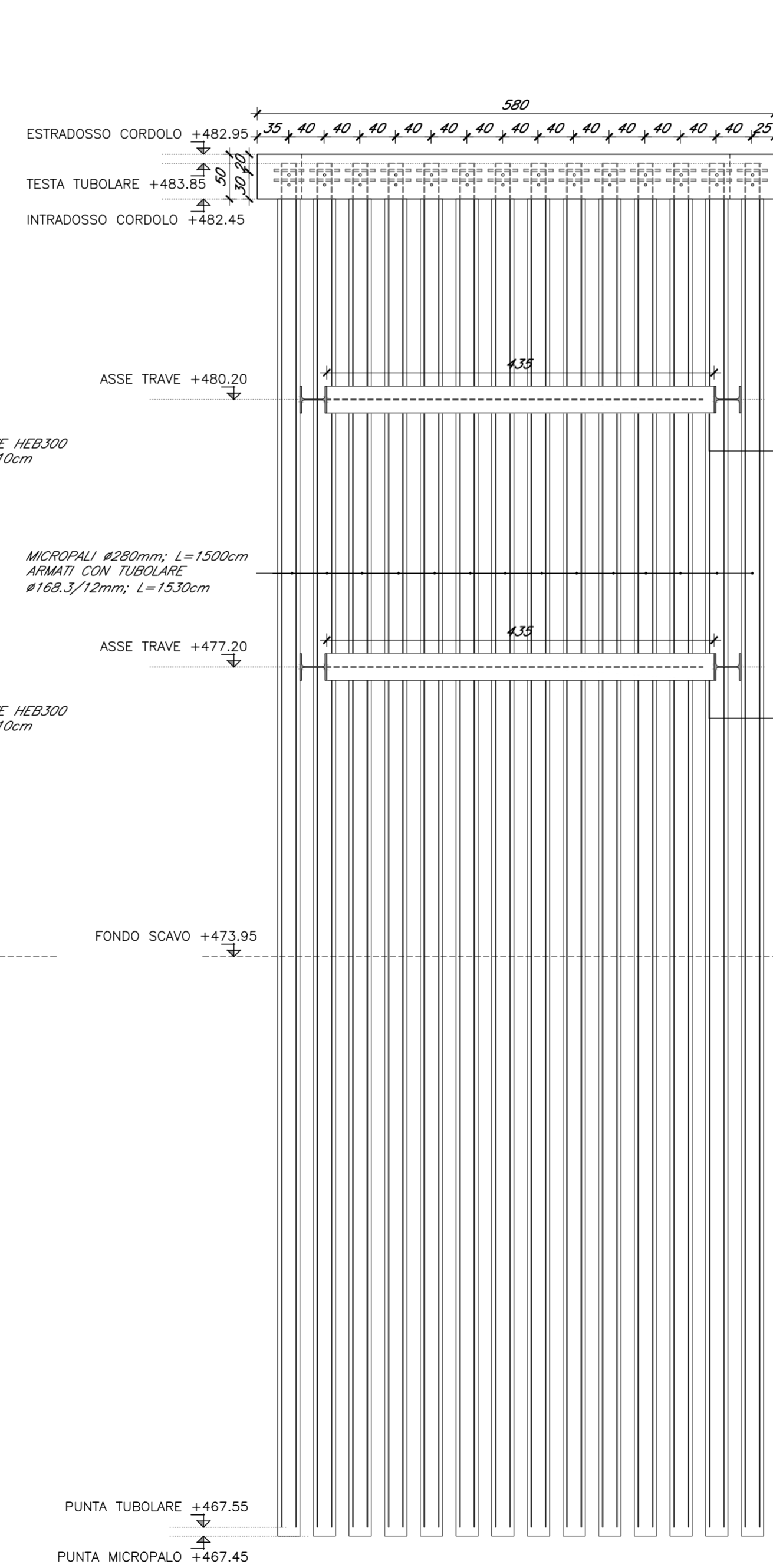
PARATIA TIPO -06-  
CARPENTERIA - PROFILO IN ASSE -01-  
SCALA 1:50



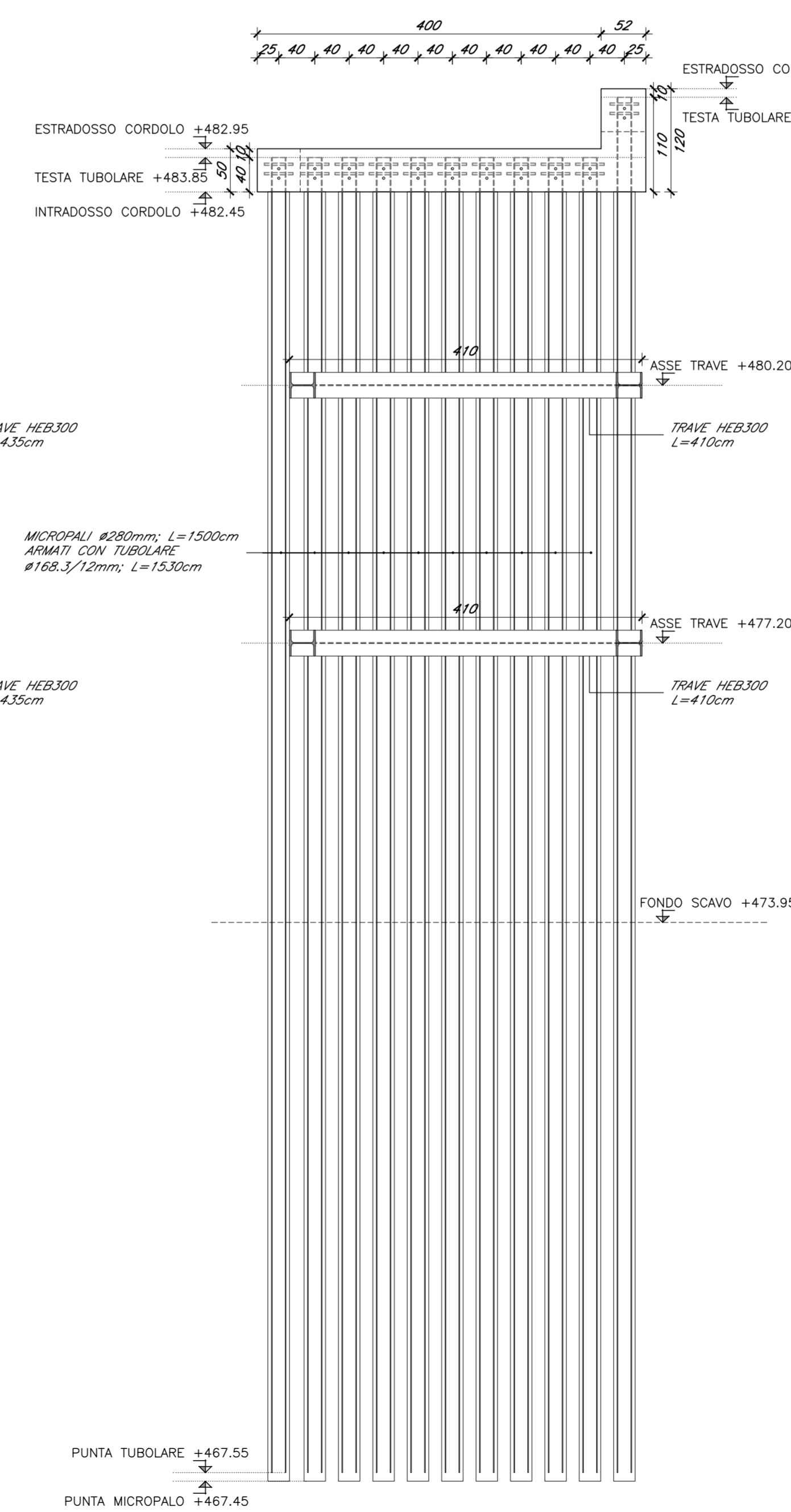
PARATIA TIPO -06-  
CARPENTERIA - PROFILO IN ASSE -02-  
SCALA 1:50



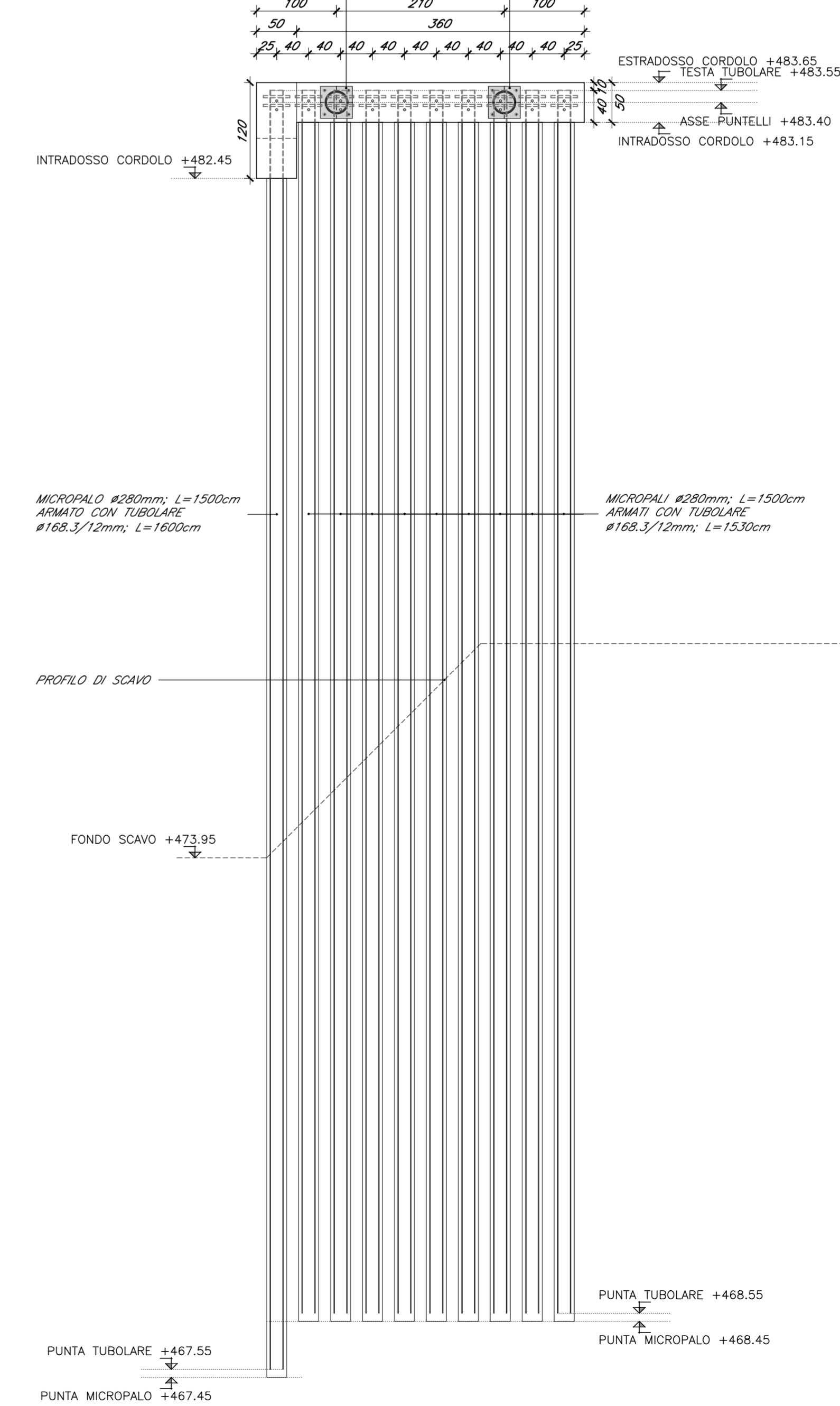
PARATIA TIPO -06-  
CARPENTERIA - PROFILO IN ASSE -03-  
SCALA 1:50



PARATIA TIPO -06-  
CARPENTERIA - PROFILO IN ASSE -04-  
SCALA 1:50



PARATIA TIPO -06-  
CARPENTERIA - PROFILO IN ASSE -05-  
SCALA 1:50



D4.05- OPERE CIVILI - VIABILITÀ DI ACCESSO AL SOTTOPASSO  
VIABILITÀ DI ACCESSO - SOTTOPASSO FERROVIARIO - OPERE PROVVISORIE: PLINTI E PARATIE LATO OVEST TAV. 2 DI 2

15/01/20

BZ NV0970 001

G. Caldera  
F. F. F.  
G. Caldera  
F. F. F.