

RS8870004540



VCC Energia Licata Srl

REGIONE SICILIANA

PROVINCIA DI AGRIGENTO  
COMUNE DI LICATA



PROVINCIA DI CALTANISSETTA  
COMUNE DI BUTERA



**PROGETTO PER LA REALIZZAZIONE DI UN IMPIANTO EOLICO DELLA POTENZA DI 93,5 MW "AGRABONA"**

TAV. SCHEMA A BLOCCHI - SVILUPPO CAVIDOTTI - SCHEMA ELETTRICO UNIFILARE

Commenti: VCC Energia Licata Srl Via Oreste Ranalletti, 281 - 67043 - Celano (AQ) P.IVA e C.F.: 02114010469



PROGETTO DEFINITIVO

Data: 07/03/2023  
Rev. 00

VCC Trapani S.r.l. - Via O. Bonaventuri n.281 - 67043 - Celano (AQ) - tel.0862/183770 - email: vcc.trapani@signal.com

PROGETTO REDATTO DA: VCC Trapani Srl

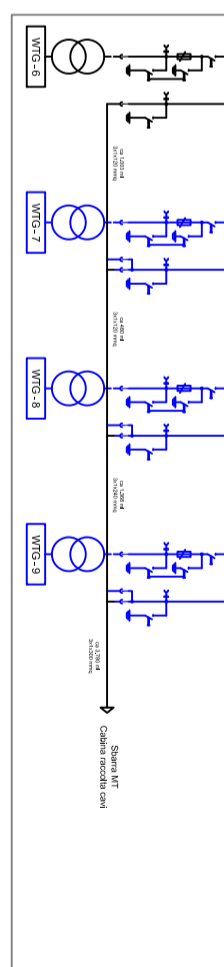
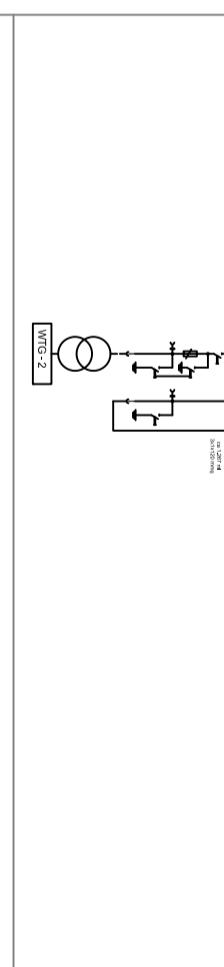
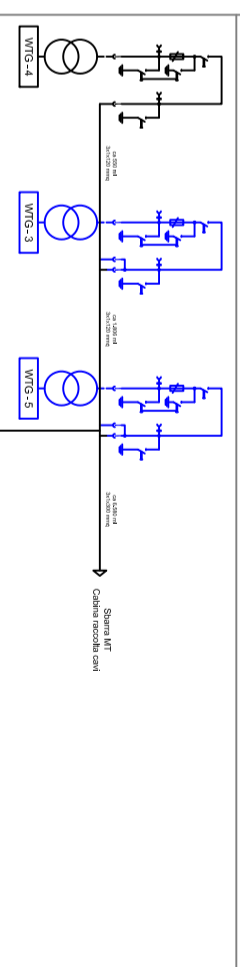
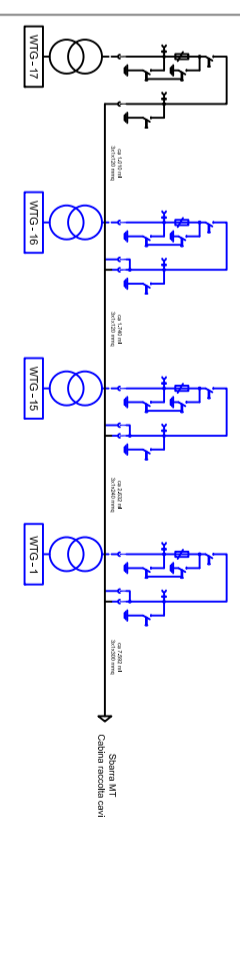
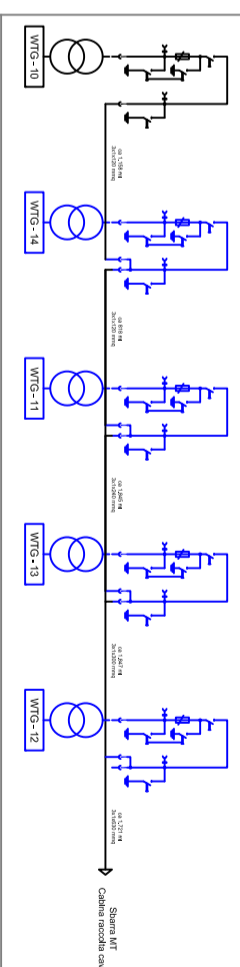
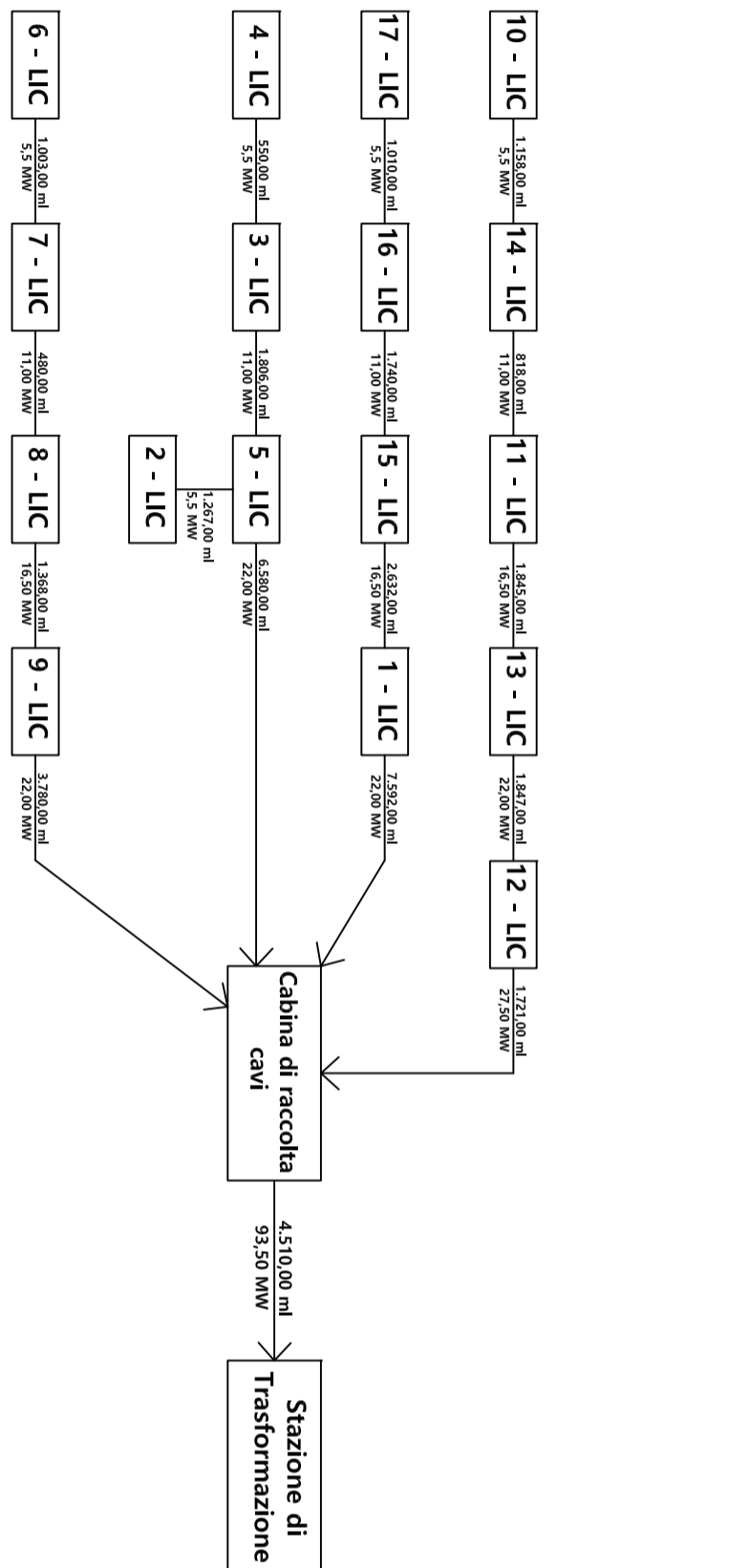
IPROGETTISTI: Dott. Ing. Vincenzo Miliani

Ordine degli Ingegneri della Provincia di Siena N. 17389

Ing. Giuseppe Monteponte

Ordine degli Ingegneri della Provincia di Siena N. 43096

**Soluzione con Stazione di Consegna e adiacente Stazione di Trasformazione in Comune di Butera (CL)**



STAZIONE CAVIDOTTI "PARCO EOLICO AGRABONA" IN COMUNE DI LICATA

Componente	Modello	Tensione cavo	Sezione cavo	Temperatura cavo	Lunghezza cavo
WTIC-10	1.5/20KV	30KV	120mm <sup>2</sup>	40°C	1,320.00 m
WTIC-11	1.5/20KV	30KV	120mm <sup>2</sup>	40°C	1,320.00 m
WTIC-12	1.5/20KV	30KV	120mm <sup>2</sup>	40°C	1,320.00 m
WTIC-13	1.5/20KV	30KV	120mm <sup>2</sup>	40°C	1,320.00 m
WTIC-14	1.5/20KV	30KV	120mm <sup>2</sup>	40°C	1,320.00 m
WTIC-15	1.5/20KV	30KV	120mm <sup>2</sup>	40°C	1,320.00 m
WTIC-16	1.5/20KV	30KV	120mm <sup>2</sup>	40°C	1,320.00 m
WTIC-17	1.5/20KV	30KV	120mm <sup>2</sup>	40°C	1,320.00 m
WTIC-1	1.5/20KV	30KV	120mm <sup>2</sup>	40°C	1,320.00 m
WTIC-2	1.5/20KV	30KV	120mm <sup>2</sup>	40°C	1,320.00 m
WTIC-3	1.5/20KV	30KV	120mm <sup>2</sup>	40°C	1,320.00 m
WTIC-4	1.5/20KV	30KV	120mm <sup>2</sup>	40°C	1,320.00 m
WTIC-5	1.5/20KV	30KV	120mm <sup>2</sup>	40°C	1,320.00 m
WTIC-6	1.5/20KV	30KV	120mm <sup>2</sup>	40°C	1,320.00 m
WTIC-7	1.5/20KV	30KV	120mm <sup>2</sup>	40°C	1,320.00 m
WTIC-8	1.5/20KV	30KV	120mm <sup>2</sup>	40°C	1,320.00 m
WTIC-9	1.5/20KV	30KV	120mm <sup>2</sup>	40°C	1,320.00 m
WTIC-18	1.5/20KV	30KV	120mm <sup>2</sup>	40°C	1,320.00 m
WTIC-19	1.5/20KV	30KV	120mm <sup>2</sup>	40°C	1,320.00 m
WTIC-20	1.5/20KV	30KV	120mm <sup>2</sup>	40°C	1,320.00 m
WTIC-21	1.5/20KV	30KV	120mm <sup>2</sup>	40°C	1,320.00 m
WTIC-22	1.5/20KV	30KV	120mm <sup>2</sup>	40°C	1,320.00 m
WTIC-23	1.5/20KV	30KV	120mm <sup>2</sup>	40°C	1,320.00 m
WTIC-24	1.5/20KV	30KV	120mm <sup>2</sup>	40°C	1,320.00 m
WTIC-25	1.5/20KV	30KV	120mm <sup>2</sup>	40°C	1,320.00 m
WTIC-26	1.5/20KV	30KV	120mm <sup>2</sup>	40°C	1,320.00 m
WTIC-27	1.5/20KV	30KV	120mm <sup>2</sup>	40°C	1,320.00 m
WTIC-28	1.5/20KV	30KV	120mm <sup>2</sup>	40°C	1,320.00 m
WTIC-29	1.5/20KV	30KV	120mm <sup>2</sup>	40°C	1,320.00 m
WTIC-30	1.5/20KV	30KV	120mm <sup>2</sup>	40°C	1,320.00 m
WTIC-31	1.5/20KV	30KV	120mm <sup>2</sup>	40°C	1,320.00 m
WTIC-32	1.5/20KV	30KV	120mm <sup>2</sup>	40°C	1,320.00 m
WTIC-33	1.5/20KV	30KV	120mm <sup>2</sup>	40°C	1,320.00 m
WTIC-34	1.5/20KV	30KV	120mm <sup>2</sup>	40°C	1,320.00 m
WTIC-35	1.5/20KV	30KV	120mm <sup>2</sup>	40°C	1,320.00 m
WTIC-36	1.5/20KV	30KV	120mm <sup>2</sup>	40°C	1,320.00 m
WTIC-37	1.5/20KV	30KV	120mm <sup>2</sup>	40°C	1,320.00 m
WTIC-38	1.5/20KV	30KV	120mm <sup>2</sup>	40°C	1,320.00 m
WTIC-39	1.5/20KV	30KV	120mm <sup>2</sup>	40°C	1,320.00 m
WTIC-40	1.5/20KV	30KV	120mm <sup>2</sup>	40°C	1,320.00 m
WTIC-41	1.5/20KV	30KV	120mm <sup>2</sup>	40°C	1,320.00 m
WTIC-42	1.5/20KV	30KV	120mm <sup>2</sup>	40°C	1,320.00 m
WTIC-43	1.5/20KV	30KV	120mm <sup>2</sup>	40°C	1,320.00 m
WTIC-44	1.5/20KV	30KV	120mm <sup>2</sup>	40°C	1,320.00 m
WTIC-45	1.5/20KV	30KV	120mm <sup>2</sup>	40°C	1,320.00 m
WTIC-46	1.5/20KV	30KV	120mm <sup>2</sup>	40°C	1,320.00 m
WTIC-47	1.5/20KV	30KV	120mm <sup>2</sup>	40°C	1,320.00 m
WTIC-48	1.5/20KV	30KV	120mm <sup>2</sup>	40°C	1,320.00 m
WTIC-49	1.5/20KV	30KV	120mm <sup>2</sup>	40°C	1,320.00 m
WTIC-50	1.5/20KV	30KV	120mm <sup>2</sup>	40°C	1,320.00 m
WTIC-51	1.5/20KV	30KV	120mm <sup>2</sup>	40°C	1,320.00 m
WTIC-52	1.5/20KV	30KV	120mm <sup>2</sup>	40°C	1,320.00 m
WTIC-53	1.5/20KV	30KV	120mm <sup>2</sup>	40°C	1,320.00 m
WTIC-54	1.5/20KV	30KV	120mm <sup>2</sup>	40°C	1,320.00 m
WTIC-55	1.5/20KV	30KV	120mm <sup>2</sup>	40°C	1,320.00 m
WTIC-56	1.5/20KV	30KV	120mm <sup>2</sup>	40°C	1,320.00 m
WTIC-57	1.5/20KV	30KV	120mm <sup>2</sup>	40°C	1,320.00 m
WTIC-58	1.5/20KV	30KV	120mm <sup>2</sup>	40°C	1,320.00 m
WTIC-59	1.5/20KV	30KV	120mm <sup>2</sup>	40°C	1,320.00 m
WTIC-60	1.5/20KV	30KV	120mm <sup>2</sup>	40°C	1,320.00 m
WTIC-61	1.5/20KV	30KV	120mm <sup>2</sup>	40°C	1,320.00 m
WTIC-62	1.5/20KV	30KV	120mm <sup>2</sup>	40°C	1,320.00 m
WTIC-63	1.5/20KV	30KV	120mm <sup>2</sup>	40°C	1,320.00 m
WTIC-64	1.5/20KV	30KV	120mm <sup>2</sup>	40°C	1,320.00 m
WTIC-65	1.5/20KV	30KV	120mm <sup>2</sup>	40°C	1,320.00 m
WTIC-66	1.5/20KV	30KV	120mm <sup>2</sup>	40°C	1,320.00 m
WTIC-67	1.5/20KV	30KV	120mm <sup>2</sup>	40°C	1,320.00 m
WTIC-68	1.5/20KV	30KV	120mm <sup>2</sup>	40°C	1,320.00 m
WTIC-69	1.5/20KV	30KV	120mm <sup>2</sup>	40°C	1,320.00 m
WTIC-70	1.5/20KV	30KV	120mm <sup>2</sup>	40°C	1,320.00 m
WTIC-71	1.5/20KV	30KV	120mm <sup>2</sup>	40°C	1,320.00 m
WTIC-72	1.5/20KV	30KV	120mm <sup>2</sup>	40°C	1,320.00 m
WTIC-73	1.5/20KV	30KV	120mm <sup>2</sup>	40°C	1,320.00 m
WTIC-74	1.5/20KV	30KV	120mm <sup>2</sup>	40°C	1,320.00 m
WTIC-75	1.5/20KV	30KV	120mm <sup>2</sup>	40°C	1,320.00 m
WTIC-76	1.5/20KV	30KV	120mm <sup>2</sup>	40°C	1,320.00 m
WTIC-77	1.5/20KV	30KV	120mm <sup>2</sup>	40°C	1,320.00 m
WTIC-78	1.5/20KV	30KV	120mm <sup>2</sup>	40°C	1,320.00 m
WTIC-79	1.5/20KV	30KV	120mm <sup>2</sup>	40°C	1,320.00 m
WTIC-80	1.5/20KV	30KV	120mm <sup>2</sup>	40°C	1,320.00 m
WTIC-81	1.5/20KV	30KV	120mm <sup>2</sup>	40°C	1,320.00 m
WTIC-82	1.5/20KV	30KV	120mm <sup>2</sup>	40°C	1,320.00 m
WTIC-83	1.5/20KV	30KV	120mm <sup>2</sup>	40°C	1,320.00 m
WTIC-84	1.5/20KV	30KV	120mm <sup>2</sup>	40°C	1,320.00 m
WTIC-85	1.5/20KV	30KV	120mm <sup>2</sup>	40°C	1,320.00 m
WTIC-86	1.5/20KV	30KV	120mm <sup>2</sup>	40°C	1,320.00 m
WTIC-87	1.5/20KV	30KV	120mm <sup>2</sup>	40°C	1,320.00 m
WTIC-88	1.5/20KV	30KV	120mm <sup>2</sup>	40°C	1,320.00 m
WTIC-89	1.5/20KV	30KV	120mm <sup>2</sup>	40°C	1,320.00 m
WTIC-90	1.5/20KV	30KV	120mm <sup>2</sup>	40°C	1,320.00 m
WTIC-91	1.5/20KV	30KV	120mm <sup>2</sup>	40°C	1,320.00 m
WTIC-92	1.5/20KV	30KV	120mm <sup>2</sup>	40°C	1,320.00 m
WTIC-93	1.5/20KV	30KV	120mm <sup>2</sup>	40°C	1,320.00 m
WTIC-94	1.5/20KV	30KV	120mm <sup>2</sup>	40°C	1,320.00 m
WTIC-95	1.5/20KV	30KV	120mm <sup>2</sup>	40°C	1,320.00 m
WTIC-96	1.5/20KV	30KV	120mm <sup>2</sup>	40°C	1,320.00 m
WTIC-97	1.5/20KV	30KV	120mm <sup>2</sup>	40°C	1,320.00 m
WTIC-98	1.5/20KV	30KV	120mm <sup>2</sup>	40°C	1,320.00 m
WTIC-99	1.5/20KV	30KV	120mm <sup>2</sup>	40°C	1,320.00 m
WTIC-100	1.5/20KV	30KV	120mm <sup>2</sup>	40°C	1,320.00 m
WTIC-101	1.5/20KV	30KV	120mm <sup>2</sup>	40°C	1,320.00 m
WTIC-102	1.5/20KV	30KV	120mm <sup>2</sup>	40°C	1,320.00 m
WTIC-103	1.5/20KV	30KV	120mm <sup>2</sup>	40°C	1,320.00 m
WTIC-104	1.5/20KV	30KV	120mm <sup>2</sup>	40°C	1,320.00 m
WTIC-105	1.5/20KV	30KV	120mm <sup>2</sup>	40°C	1,320.00 m
WTIC-106	1.5/20KV	30KV	120mm <sup>2</sup>	40°C	1,320.00 m
WTIC-107	1.5/20KV	30KV	120mm <sup>2</sup>	40°C	1,320.00 m
WTIC-108	1.5/20KV	30KV	120mm <sup>2</sup>	40°C	1,320.00 m
WTIC-109	1.5/20KV	30KV	120mm <sup>2</sup>	40°C	1,320.00 m
WTIC-110	1.5/20KV	30KV	120mm <sup>2</sup>	40°C	1,320.00 m
WTIC-111	1.5/20KV	30KV	120mm <sup>2</sup>	40°C	1,320.00 m
WTIC-112	1.5/20KV	30KV	120mm <sup>2</sup>	40°C	1,320.00 m
WTIC-113	1.5/20KV	30KV	120mm <sup>2</sup>	40°C	1,320.00 m
WTIC-114	1.5/20KV	30KV	120mm <sup>2</sup>	40°C	1,320.00 m
WTIC-115	1.5/20KV	30KV	120mm <sup>2</sup>	40°C	1,320.00 m
WTIC-116	1.5/20KV	30KV	120mm <sup>2</sup>	40°C	1,320.00 m
WTIC-117	1.5/20KV	30KV	120mm <sup>2</sup>	40°C	1,320.00 m
WTIC-118	1.5/20KV	30KV	120mm <sup>2</sup>	40°C	1,320.00 m
WTIC-119	1.5/20KV	30KV	120mm <sup>2</sup>	40°C	1,320.00 m
WTIC-120	1.5/20KV	30KV	120mm <sup>2</sup>	40°C	1,320.00 m
WTIC-121	1.5/20KV	30KV	120mm <sup>2</sup>	40°C	1,320.00 m
WTIC-122	1.5/20KV	30KV	120mm <sup>2</sup>	40°C	1,320.00 m
WTIC-123	1.5/20KV	30KV	120mm <sup>2</sup>	40°C	1,320.00 m
WTIC-124	1.5/20KV	30KV	120mm <sup>2</sup>	40°C	1,320.00 m
WTIC-125	1.5/20KV	30KV	120mm <sup>2</sup>	40°C	1,320.00 m
WTIC-126	1.5/20KV	30KV	120mm <sup>2</sup>	40°C	1,320.00 m
WTIC-127	1.5/20KV	30KV	120mm <sup>2</sup>	40°C	1,320.00 m
WTIC-128	1.5/20KV	30KV	120mm <sup>2</sup>	40°C	1,320.00 m
WTIC-129	1.5/20KV	30KV	120mm <sup>2</sup>	40°C	1,320.00 m
WTIC-130	1.5/20KV	30KV	120mm <sup>2</sup>	40°C	1,320.00 m
WTIC-131	1.5/20KV	30KV	120mm <sup>2</sup>	40°C	1,320.00 m
WTIC-132	1.5/20KV	30KV	120mm <sup>2</sup>	40°C	1,320.00 m
WTIC-133	1.5/20KV	30KV	120mm <sup>2</sup>	40°C	1,320.00 m
WTIC-134	1.5/20KV	30KV	120mm <sup>2</sup>	40°C	1,320.00 m
WTIC-135	1.5/20KV	30KV	120mm <sup>2</sup>	40°C	1,320.00 m
WTIC-136	1.5/20KV	30KV	120mm <sup>2</sup>	40°C	1,320.00 m
WTIC-137	1.5/20KV	30KV	120mm <sup>2</sup>	40°C	1,320.00 m
WTIC-138	1.5/20KV	30KV	120mm <sup>2</sup>	40°C	1,320.00 m
WTIC-139	1.5/20KV	30KV	120mm <sup>2</sup>	40°C	1,320.00 m
WTIC-140	1.5/20KV	30KV	120mm <sup>2</sup>	40°C	1,320.00 m
WTIC-141	1.5/20KV	30KV	120mm <sup>2</sup>	40°C	1,320.00 m
WTIC-142	1.5/20KV	30KV	120mm <sup>2</sup>	40°C	1,320.00 m
WTIC-143	1.5/20KV	30KV	120mm <sup>2</sup>	40°C	1,320.00 m
WTIC-144	1.5/20KV	30KV	120mm <sup>2</sup>	40°C	1,320.00 m
WTIC-145	1.5/20KV	30KV	120mm <sup>2</sup>	40°C	1,320.00 m
WTIC-146	1.5/20KV	30KV	120mm <sup>2</sup>	40°C	1,320.00 m
WTIC-147	1.5/20KV	30KV	120mm <sup>2</sup>	40°C	1,320.00 m
WTIC-148	1.5/20KV	30KV	120mm <sup>2</sup>	40°C	1,320.00 m
WTIC-149	1.5/20KV	30KV	120mm <sup>2</sup>	40°C	1,320.00 m
WTIC-15					