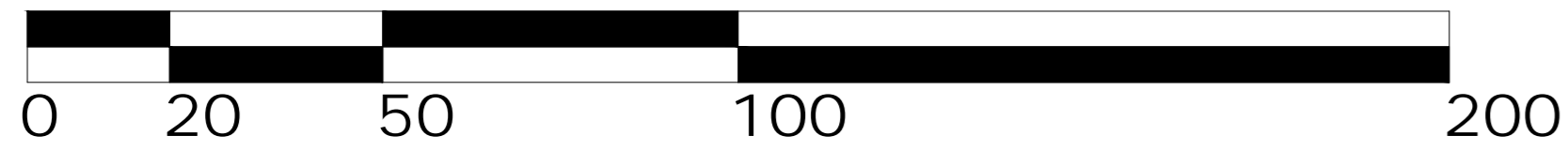
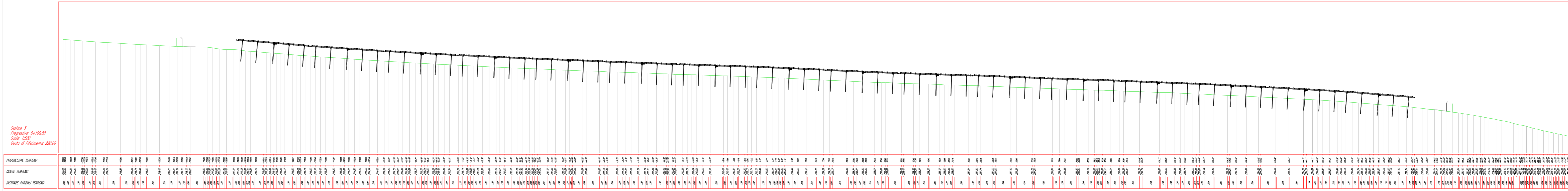
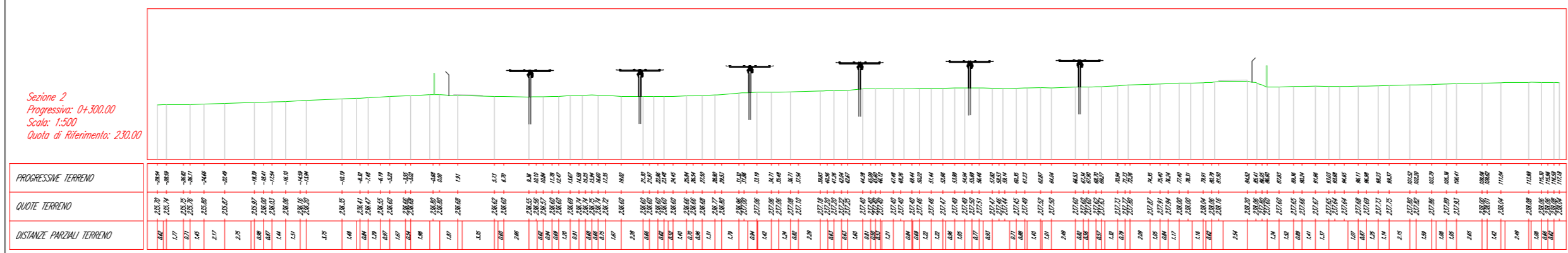
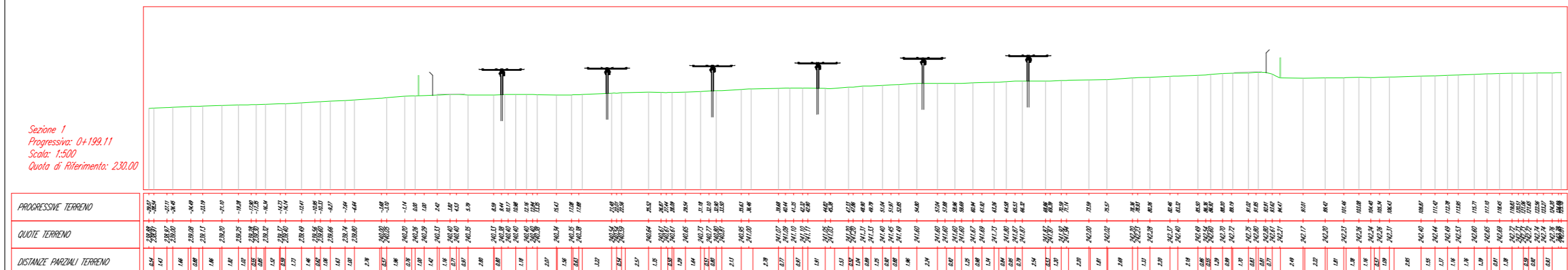
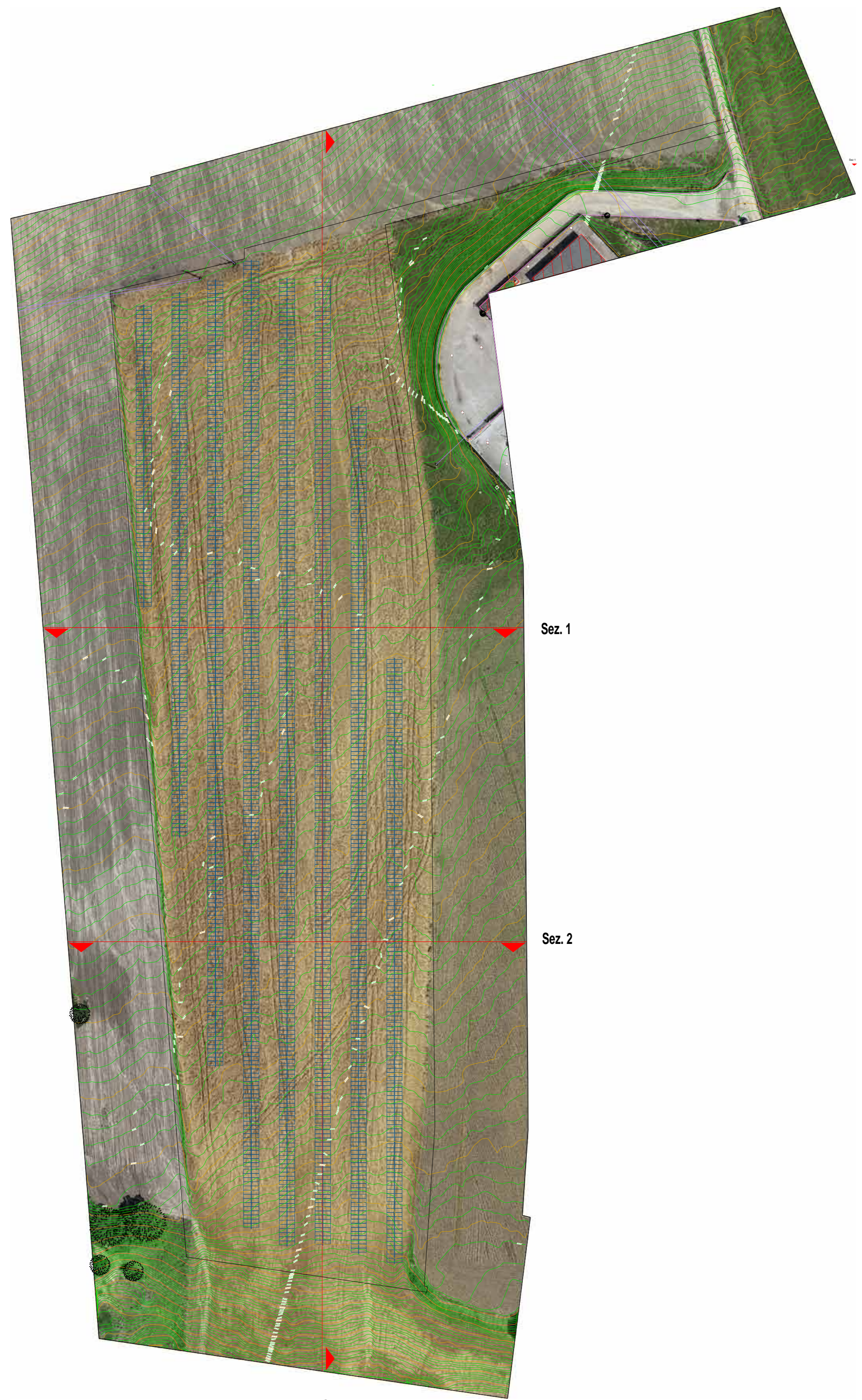
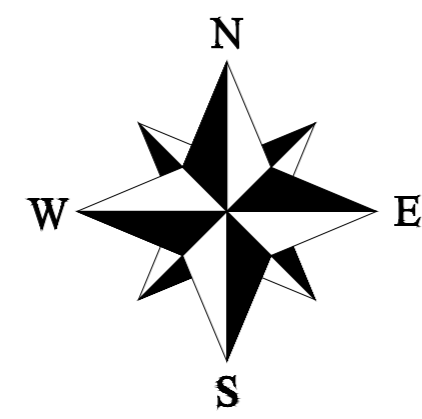


Particolare del Campo Fotovoltaico - Scala 1:1000



Impianto Agrivoltaico CEPPEO,  
potenza nominale 27,185MWp, sito in Rotello (CB)  
PROGETTO DEFINITIVO



Sezioni di progetto su planimetria quotata con curve di livello: sottocampo 1

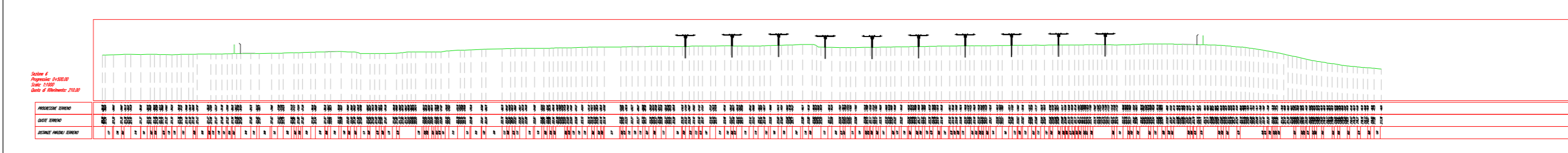
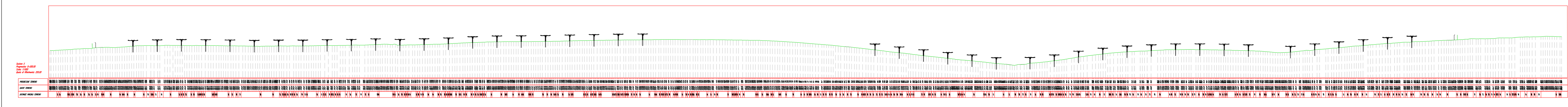
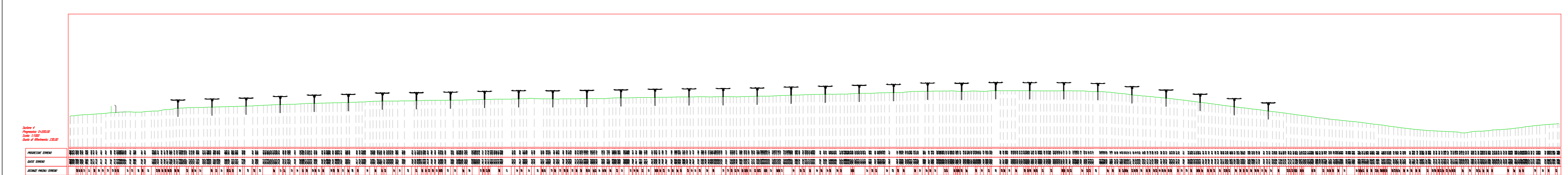
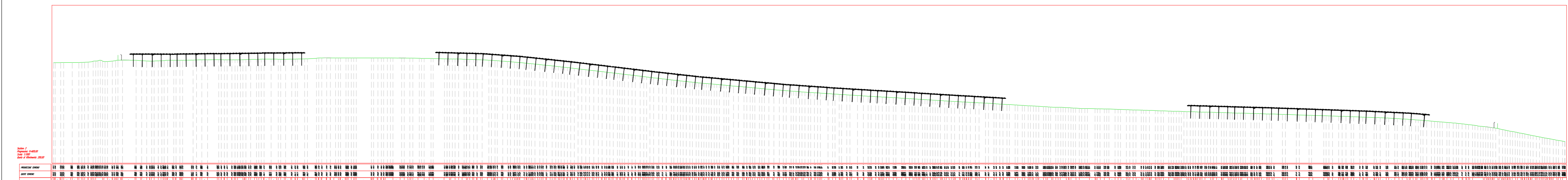
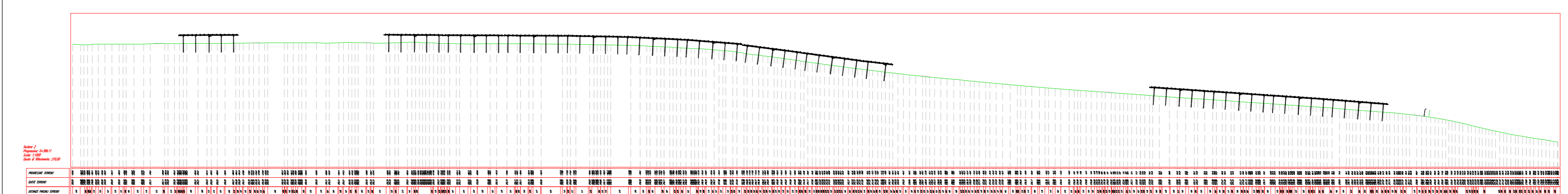
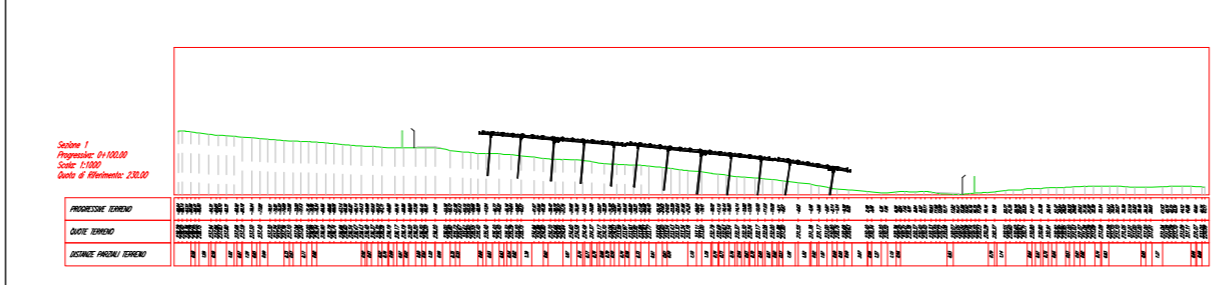
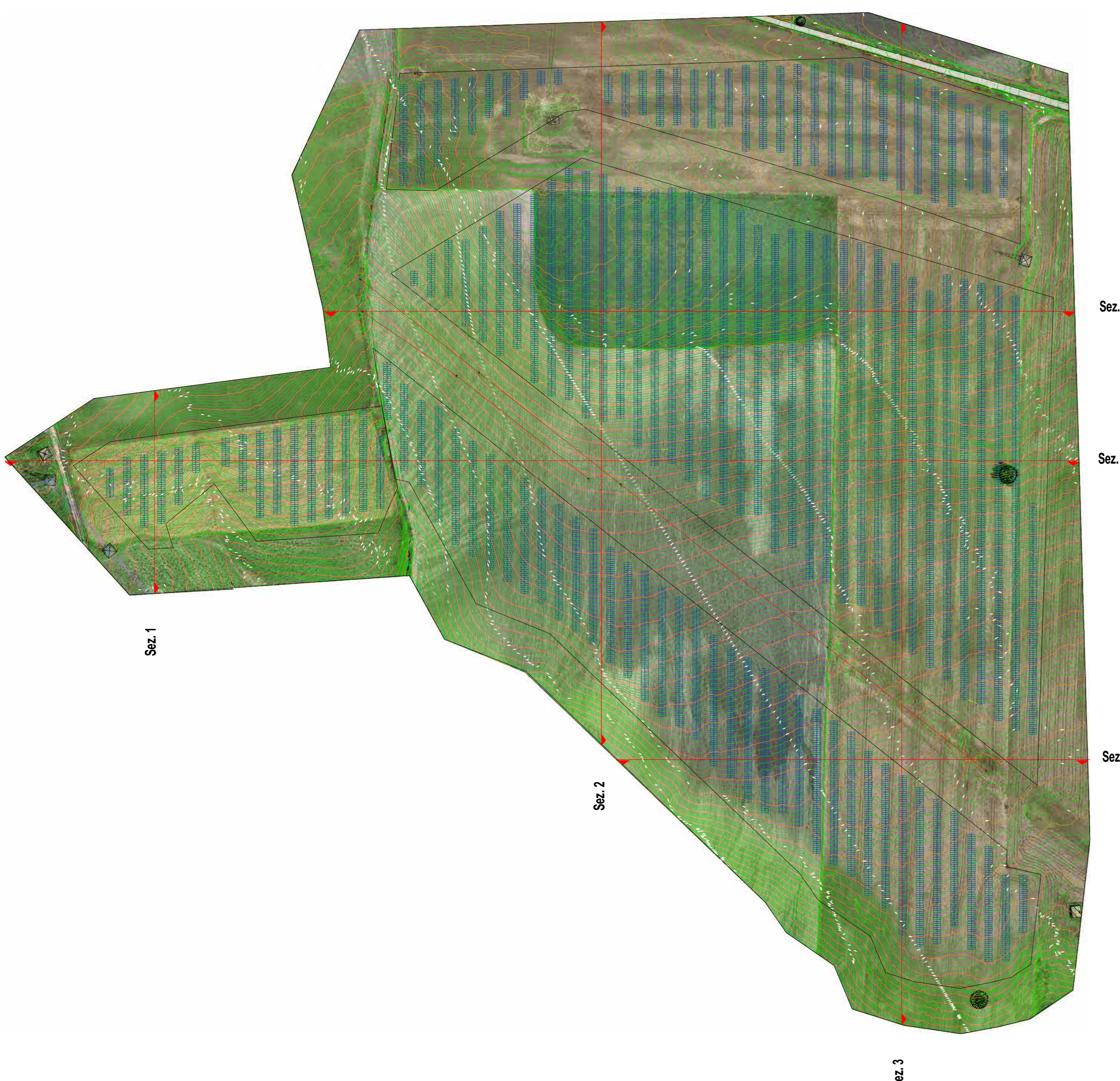
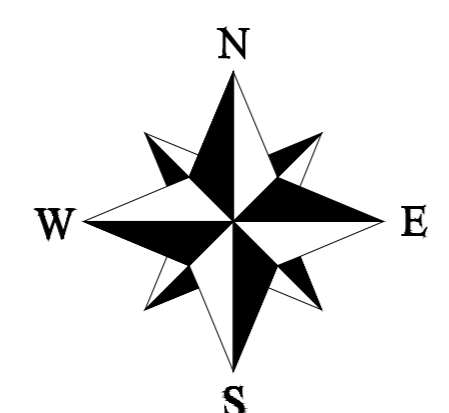
Il Proponente **CEPPEO SOLAR S.r.l.** firma  
Via. S. Trinita n. 3, 02023 Rotello (MI)-CF/P.IVA 12923990969  
**IBERNORDIC** ENERGY

Il progettista **STUDIO MASC** firma  
Ing. **STUDIO MASC** ENERGY

Firme e Revisioni				Codifica elaborato	
Rv	Data	Descrizione	Redatto	Verificato	Approvato
0	18-07-23	Elaborato di dettaglio			

Stigla elaborato	TEC-5.1
Formato	A0
Scala elaborato	Varie
Revisione	Emissione

Particolare del Campo Fotovoltaico - Scala 1:2000

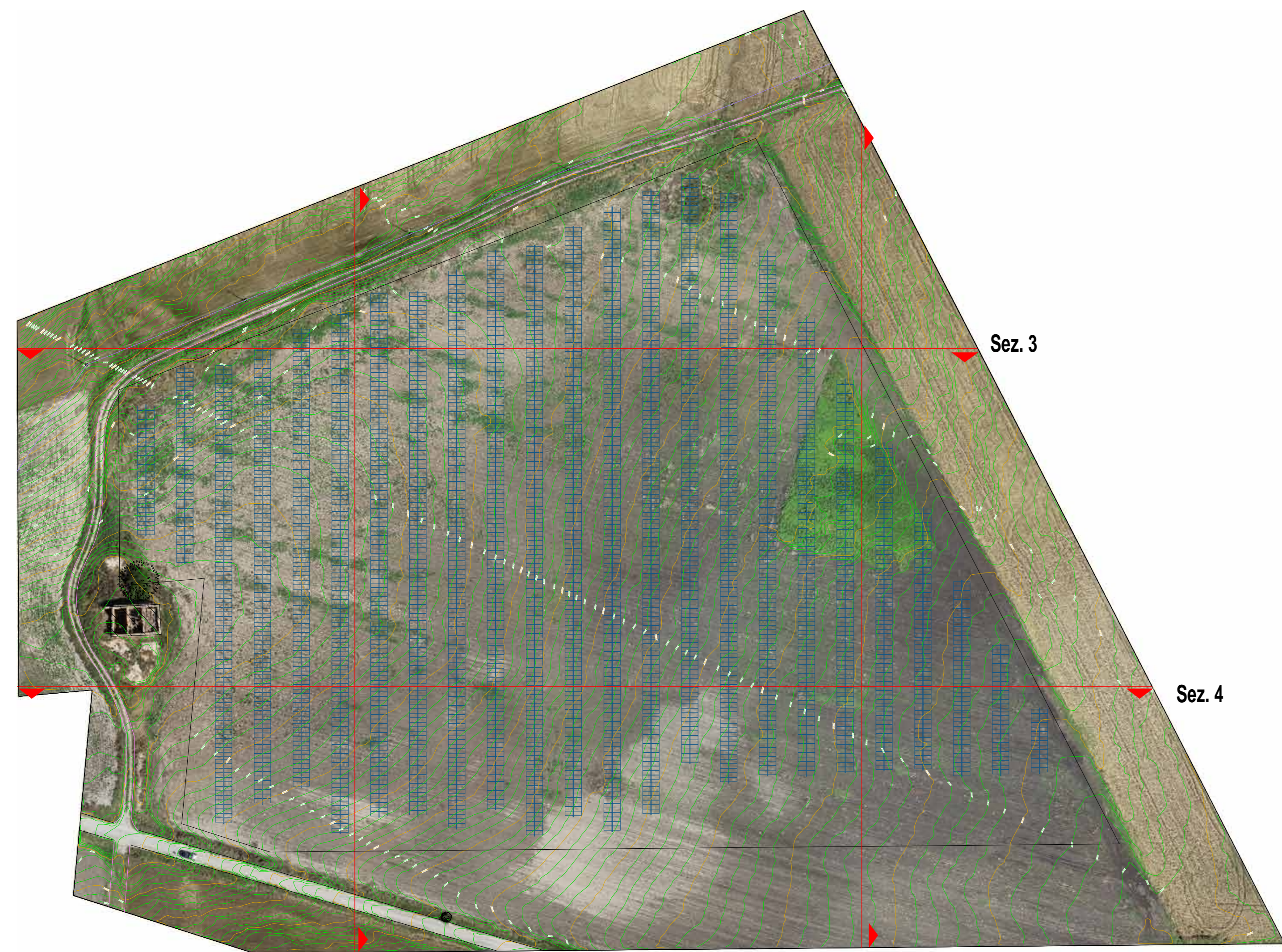
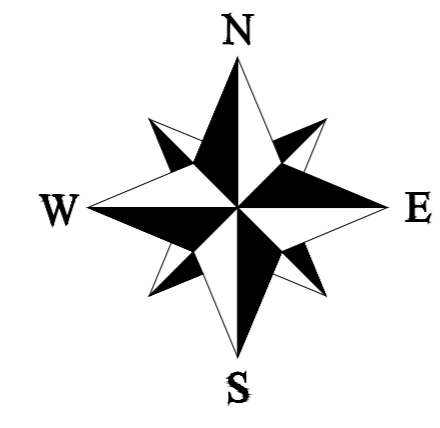


Titolo:  
Sezioni di progetto su planimetria quotata con curve di livello: sottocampo 2,4,5

Il Proponente	firma	Il progettista:	firma
 Via S. Tommaso n. 3, 02023 Rotello (MI)-C.F./P.IVA 12923990959		 ENERGY	

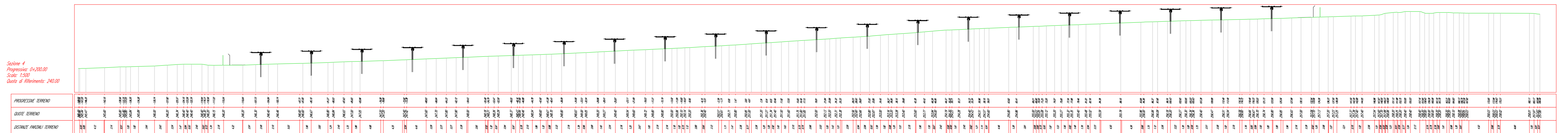
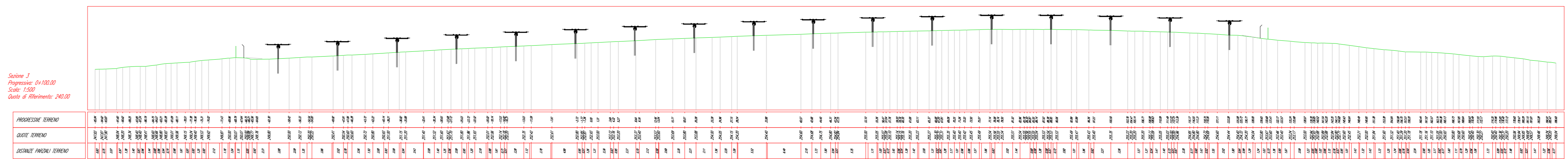
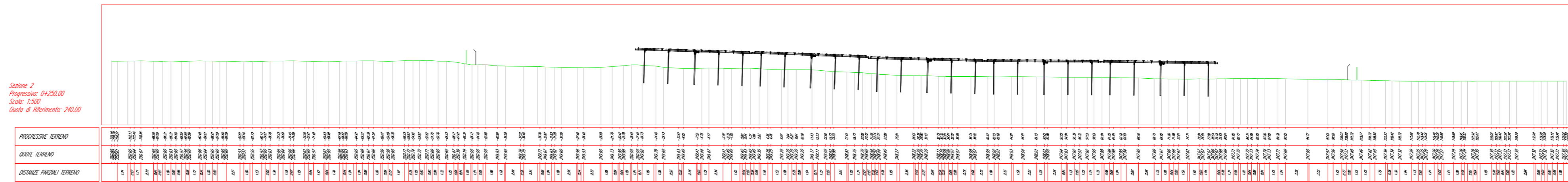
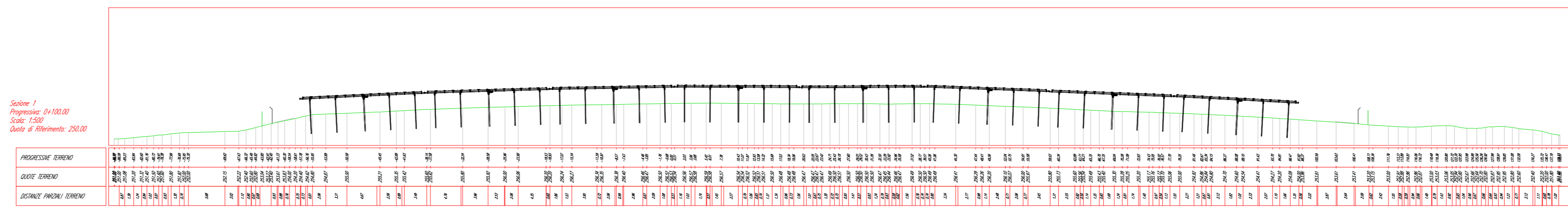
Firme e Revisioni				Codifica elaborato	
Rv	Data	Descrizione	Redatto	Verificato	Approvato
0	18-07-23	Elaborato di dettaglio	FA	A.S.	Ing. L.O. Leoni

Stato elaborato	AO
Revisione	Emissione



Sez. 1

Sez. 2



Titolo:  
Sezioni di progetto su planimetria quotata con curve di livello: sottocampo 3

Il Proponente <b>CEPPETO SOLAR S.r.l.</b> Via Sora, Tronche n. 5, 02023 Sora (TR) (MI)-CF/P. IVA 10239909589	Il progettista: <b>STUDIO MASC</b>
--	---------------------------------------

Firme e Revisioni				Codifica elaborato		
Rv	Data	Descrizione	Redatto	Verificato	Approvato	Stigla elaborato
0	18-07-23	Elaborato di dettaglio	FA.	A.S.	Ing. L.O. Leona	TEC-5.3
						Formato
						AO
						Stigla elaborato
						Vant
						Revisione
						Emissione

