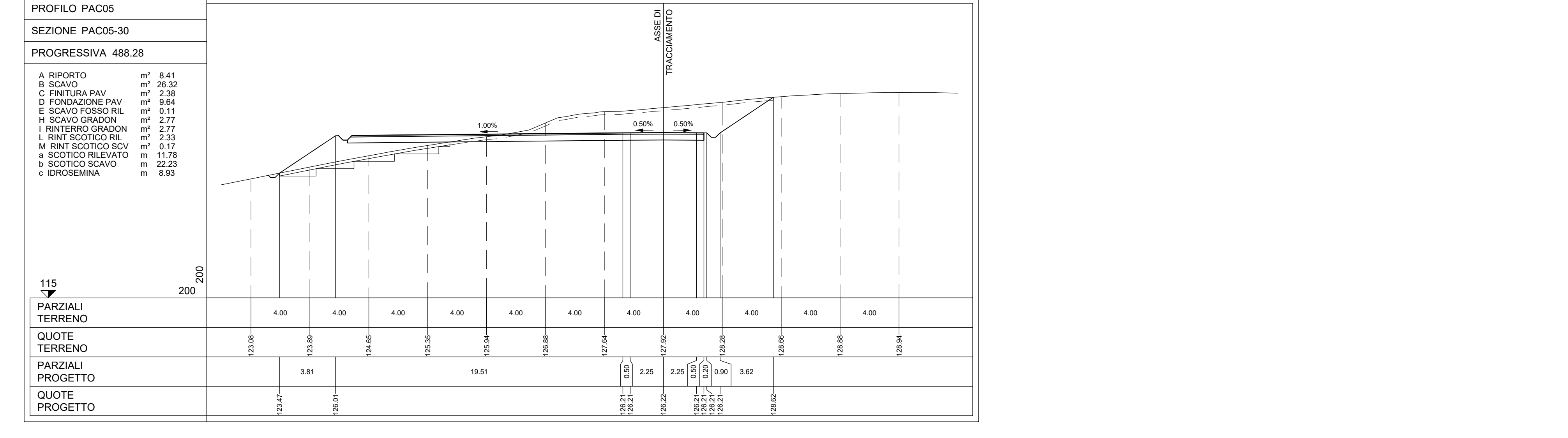
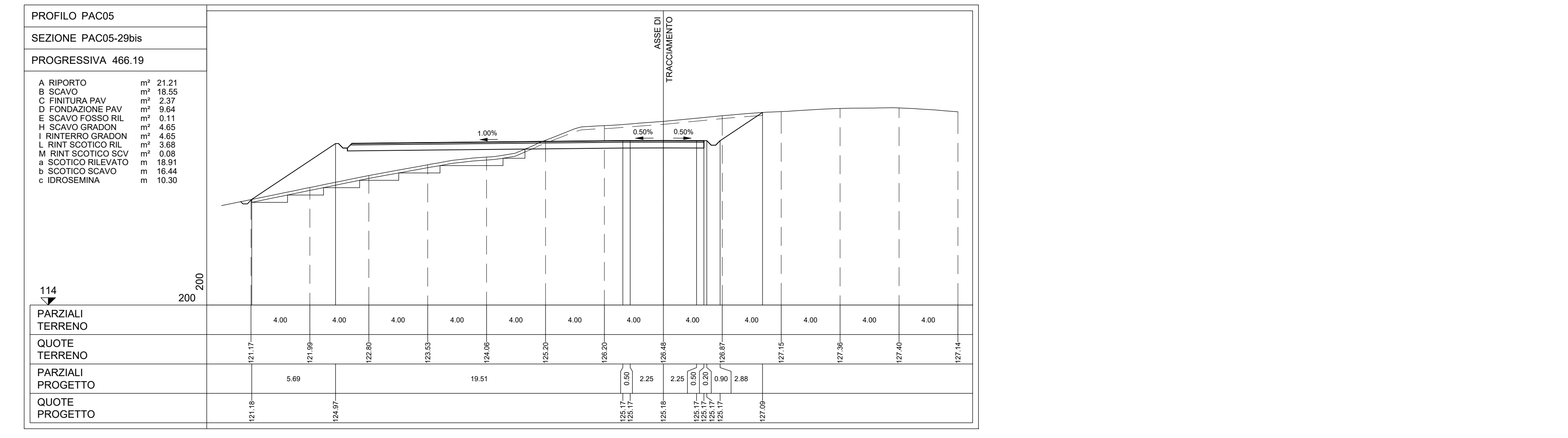
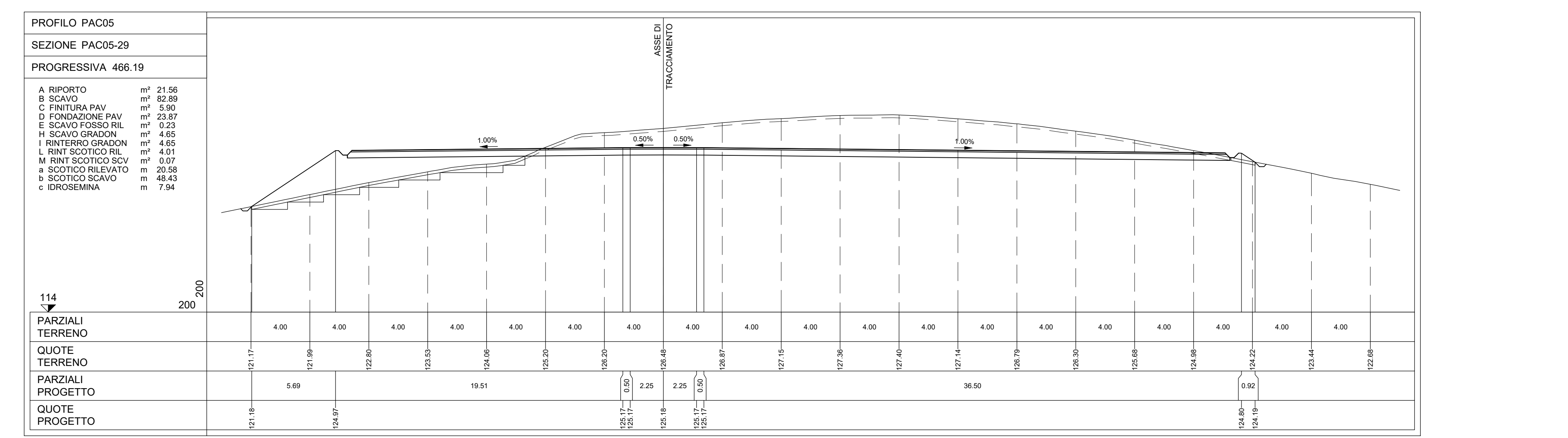
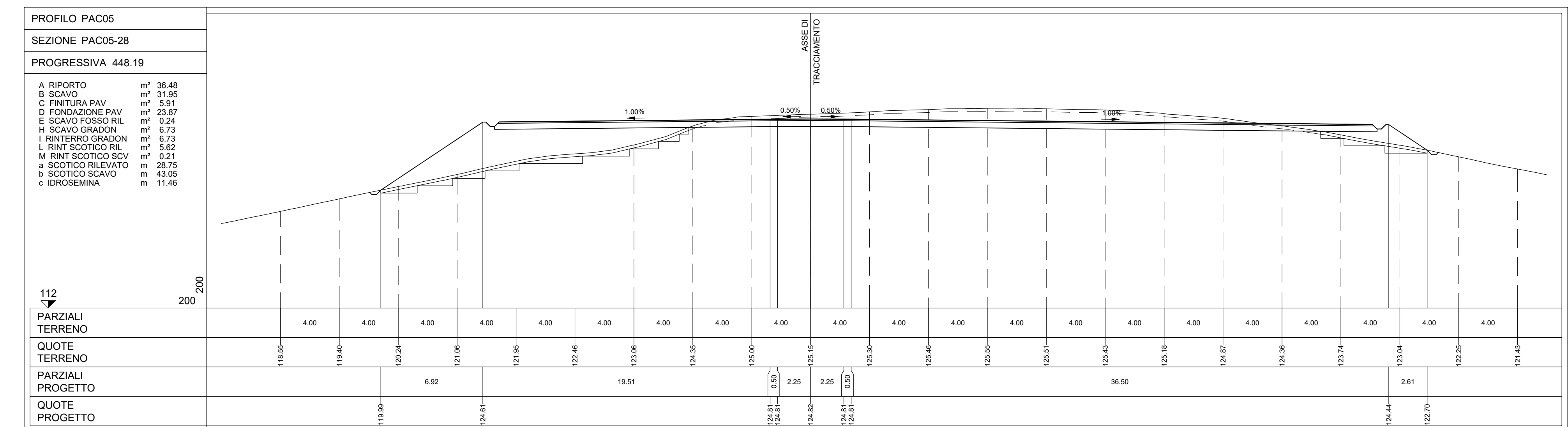
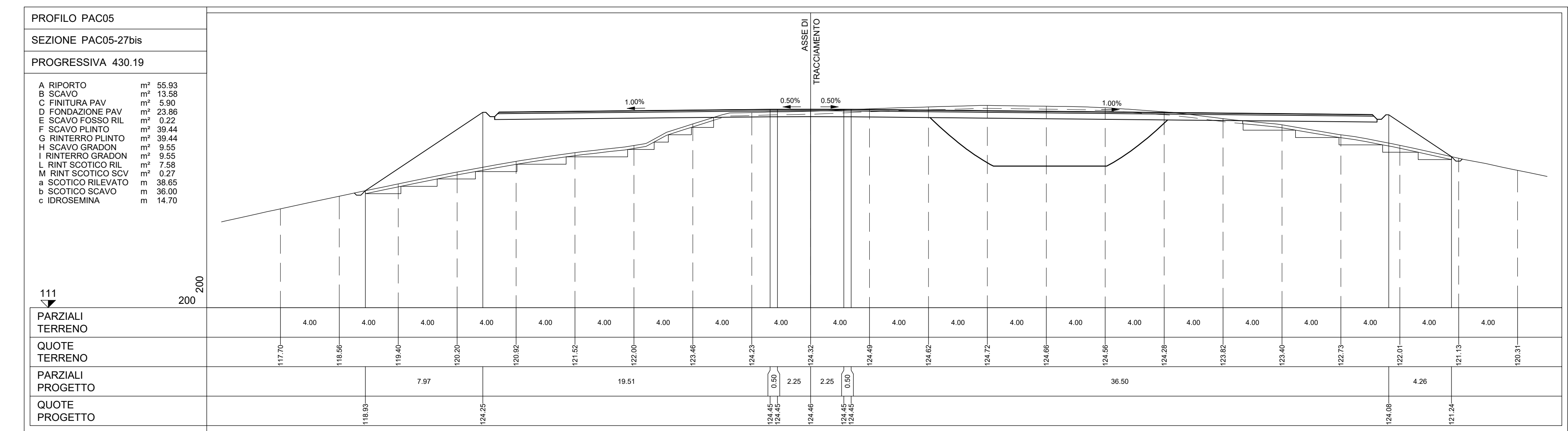
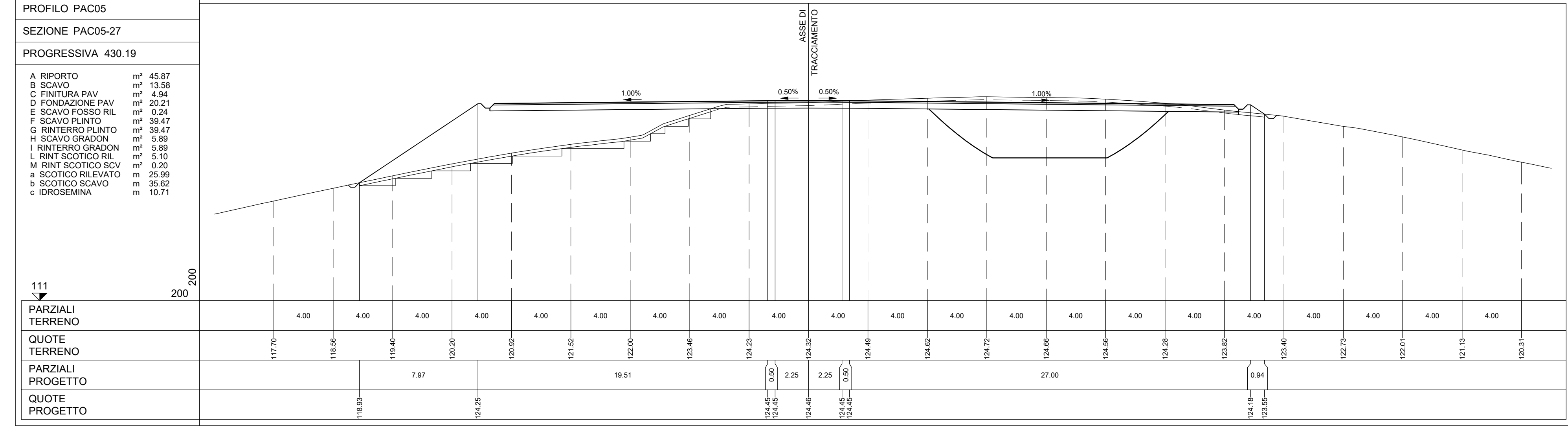
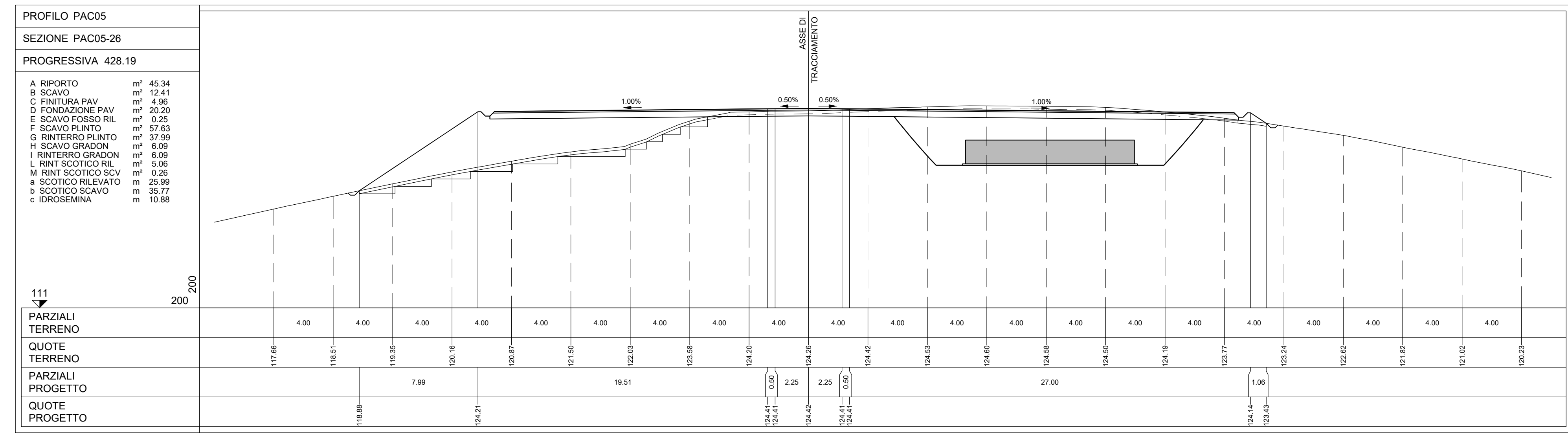
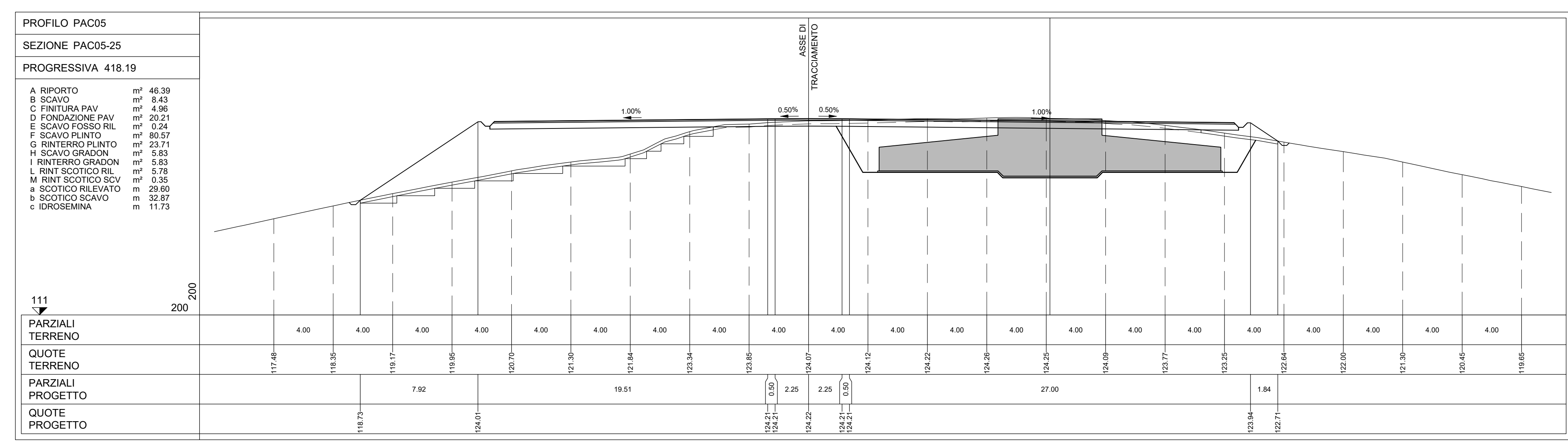
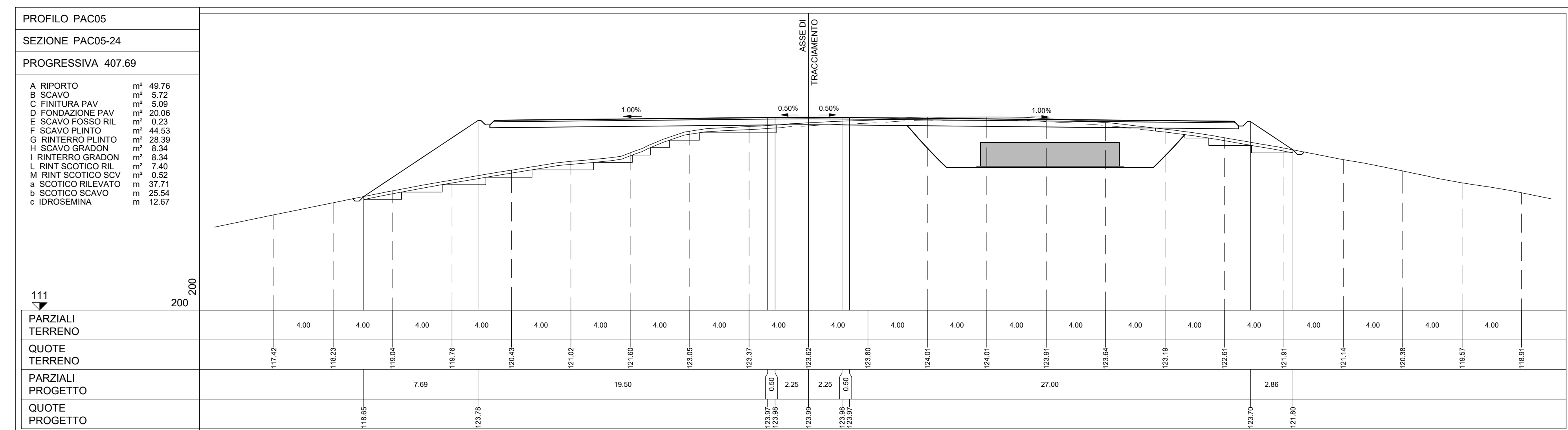
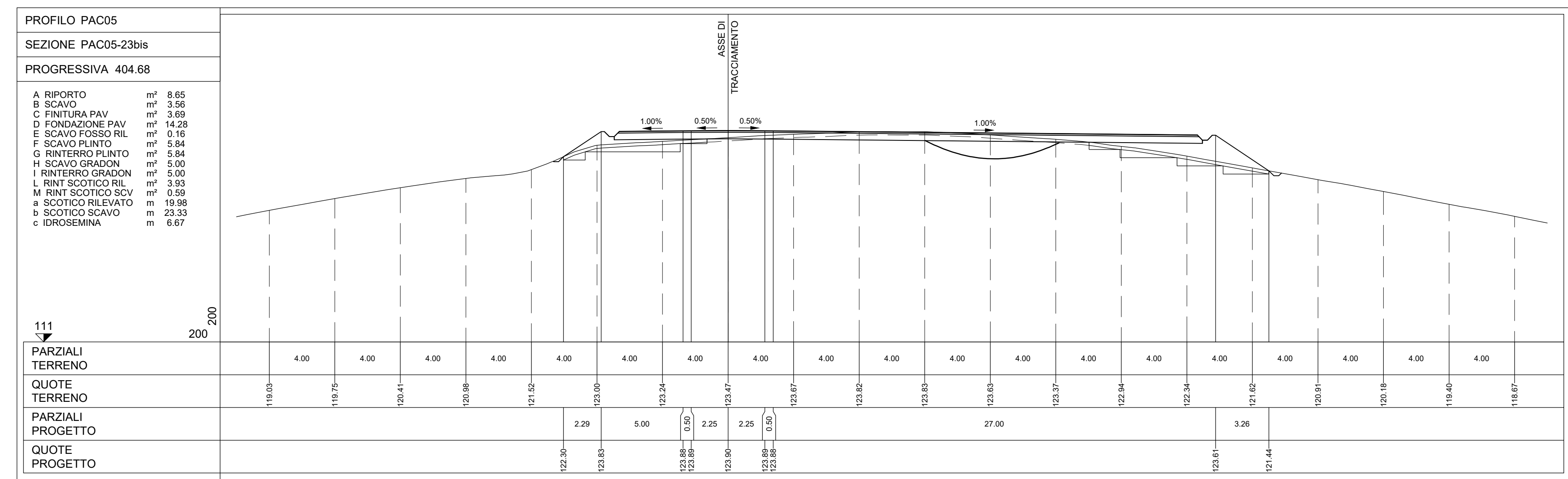


NOTE:
- PER LE UBICAZIONI E LE DIMENSIONI RELATIVE ALLE OPERE IDRAULICHE SI VEDANO LE TAVOLE SPECIFICHE.



| Rev. | Descrizione | Aut. | Co. | Gi. | 07/2023 |
|------|-------------|------|-----|-----|---------|
| REV. | MODIFICA | | | | |

| | | | | | |
|---|--|---|--|---|--|
| Montana | | Montana | | Montana | |
| PACECO S.R.L. | | PACECO S.R.L. | | PACECO S.R.L. | |
| Via Anselmo Fumagalli, 6, 20143 Milano | | Via Anselmo Fumagalli, 6, 20143 Milano | | Via Anselmo Fumagalli, 6, 20143 Milano | |
| ING. LAURA CONTI | | ING. LAURA CONTI | | ING. LAURA CONTI | |
| Arch. LAURA CONTI | | Arch. LAURA CONTI | | Arch. LAURA CONTI | |
| IMPIANTO EOLICO DA 108 MW | | IMPIANTO EOLICO DA 108 MW | | IMPIANTO EOLICO DA 108 MW | |
| COMUNE DI PACECO (TP), MISLUSCEMI (TP) e TRAPANI (TP) | | COMUNE DI PACECO (TP), MISLUSCEMI (TP) e TRAPANI (TP) | | COMUNE DI PACECO (TP), MISLUSCEMI (TP) e TRAPANI (TP) | |
| PACOS - SEZIONI TRASVERSALI PAZZOLA | | PACOS - SEZIONI TRASVERSALI PAZZOLA | | PACOS - SEZIONI TRASVERSALI PAZZOLA | |
| T. 12.5a | | T. 12.5a | | T. 12.5a | |

