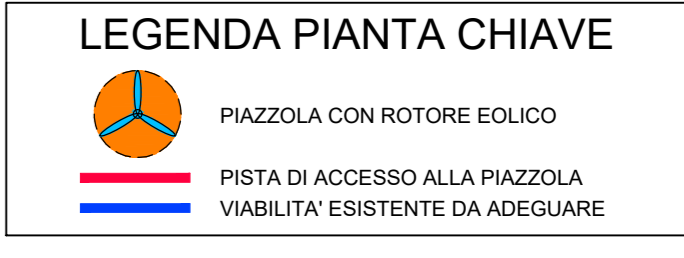
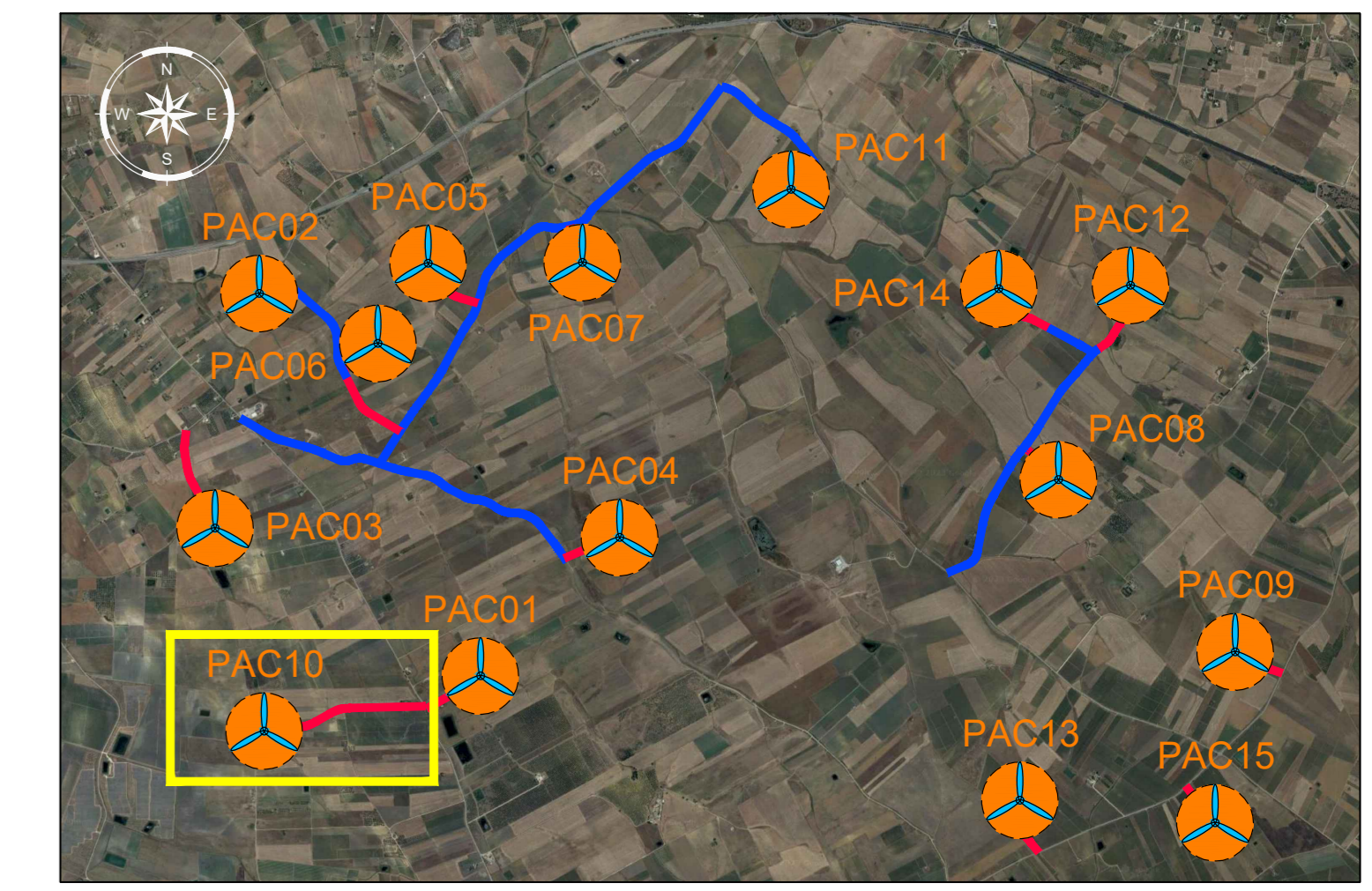
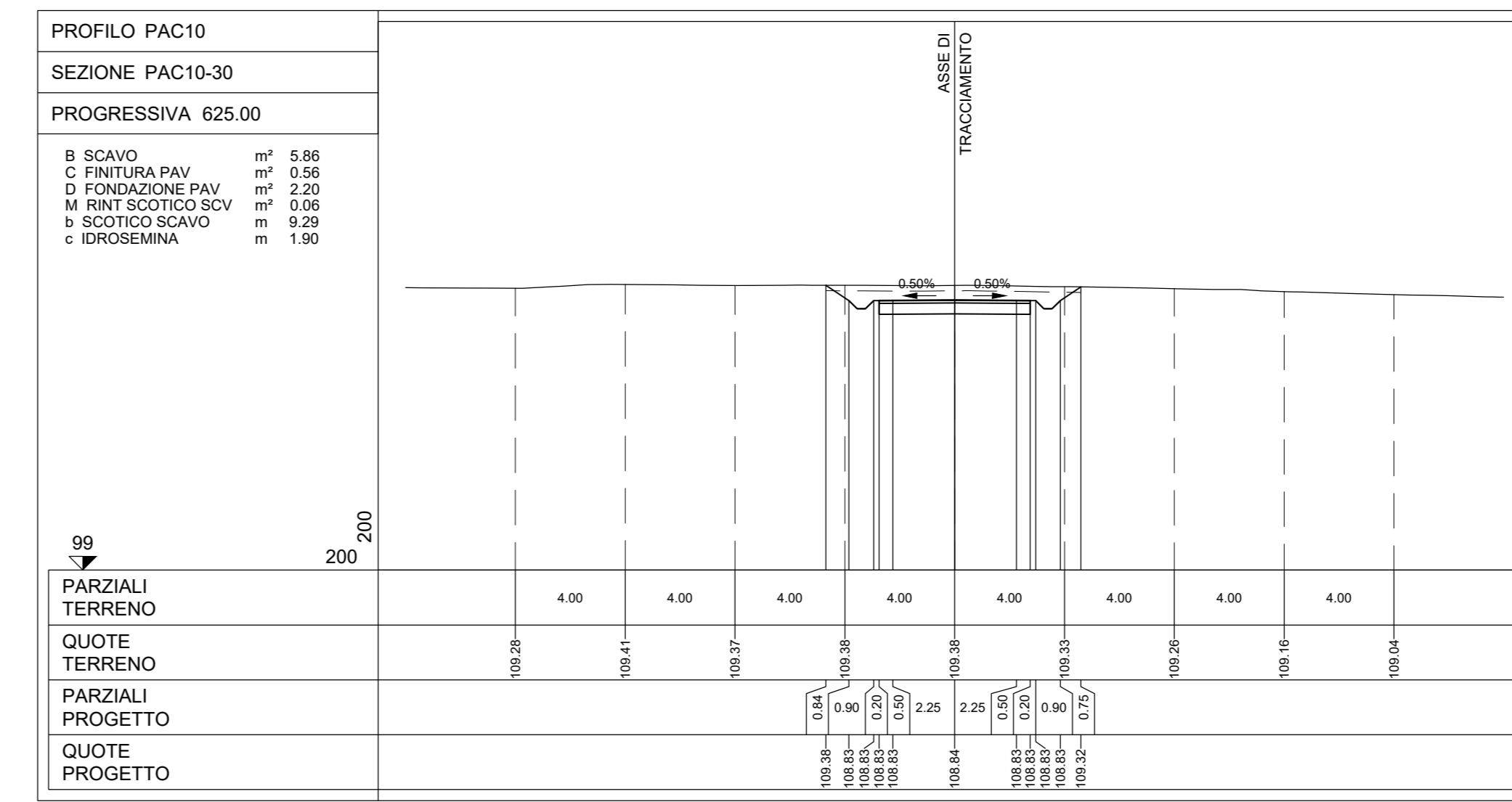
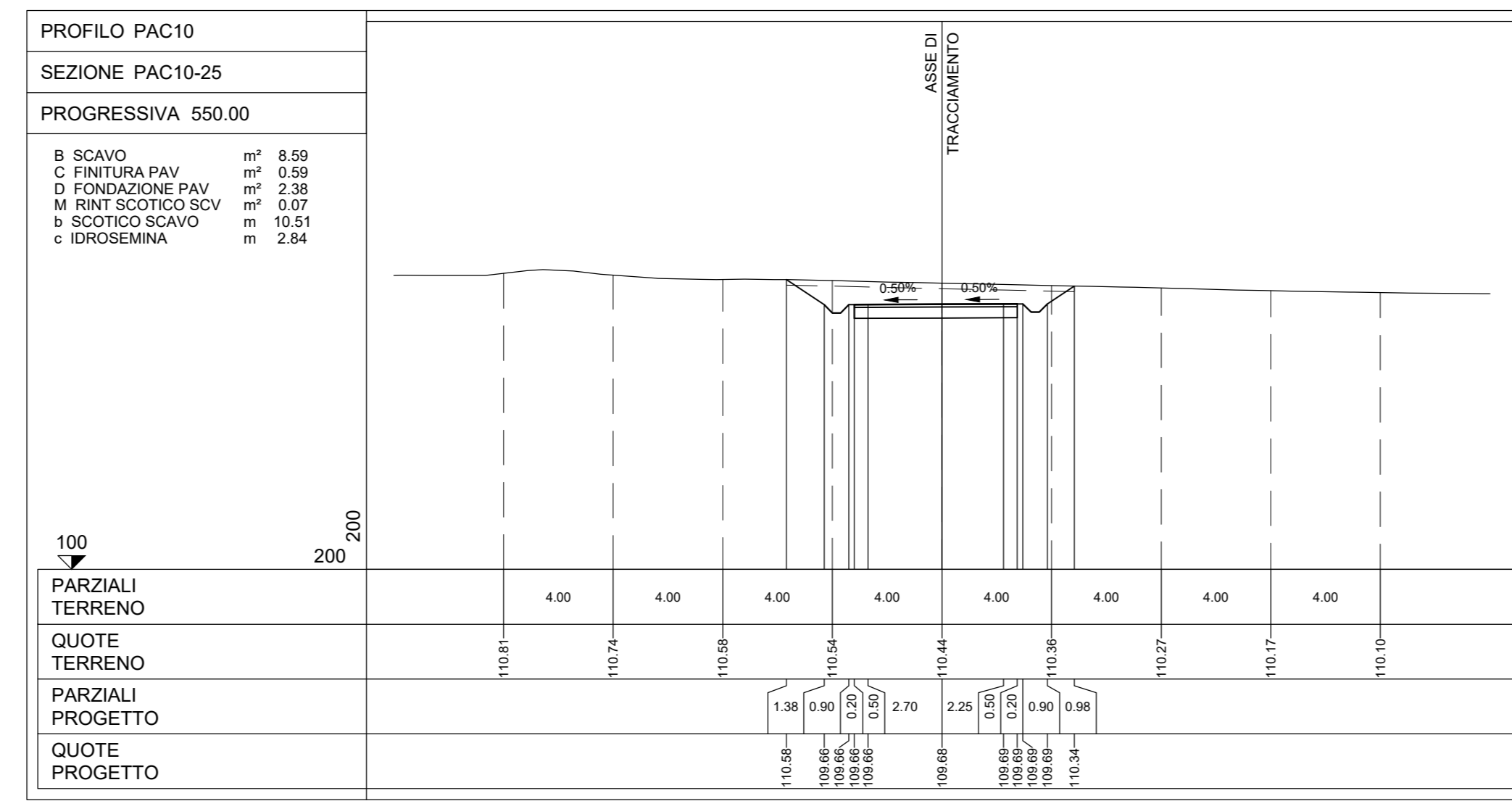
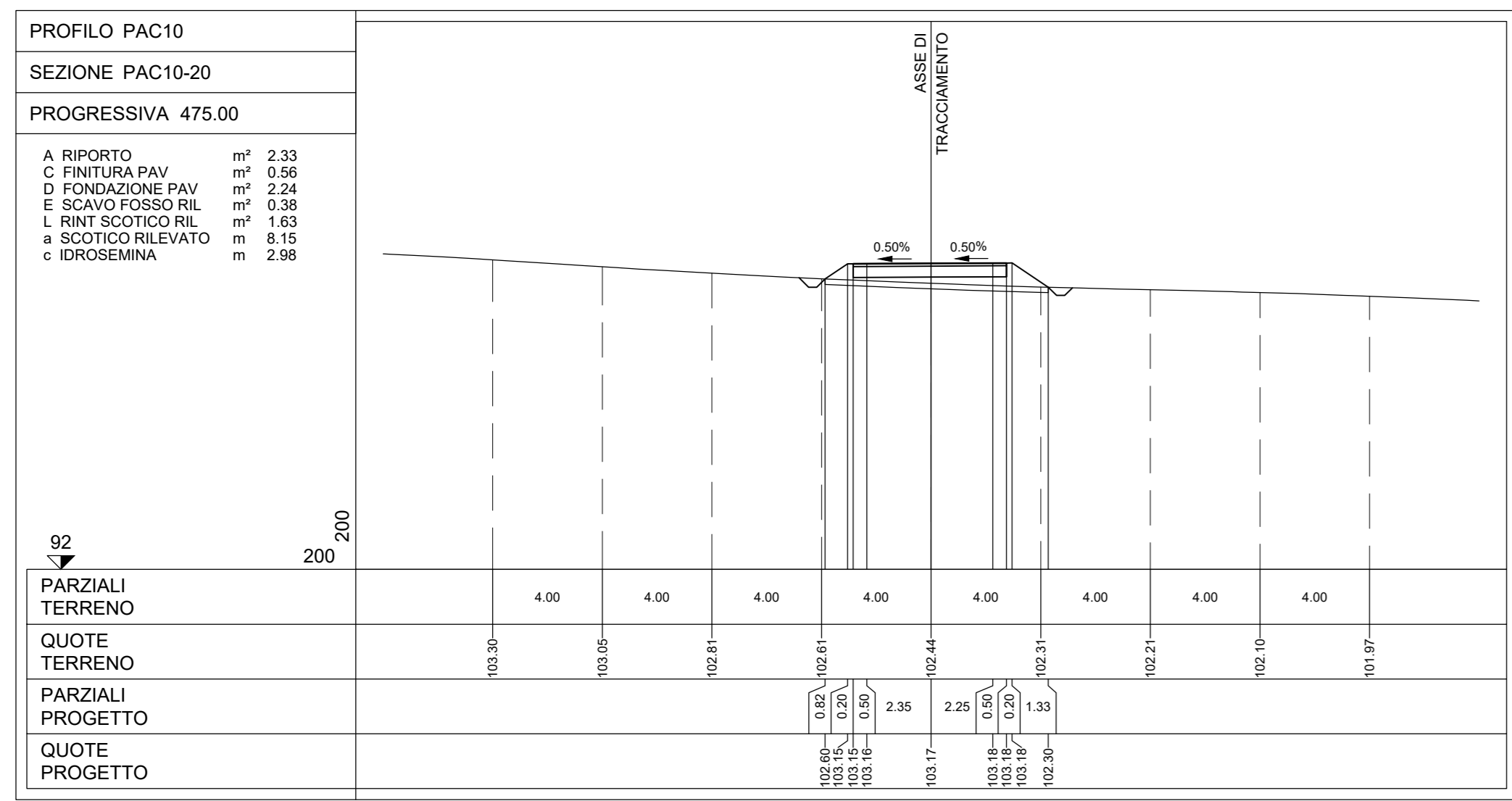
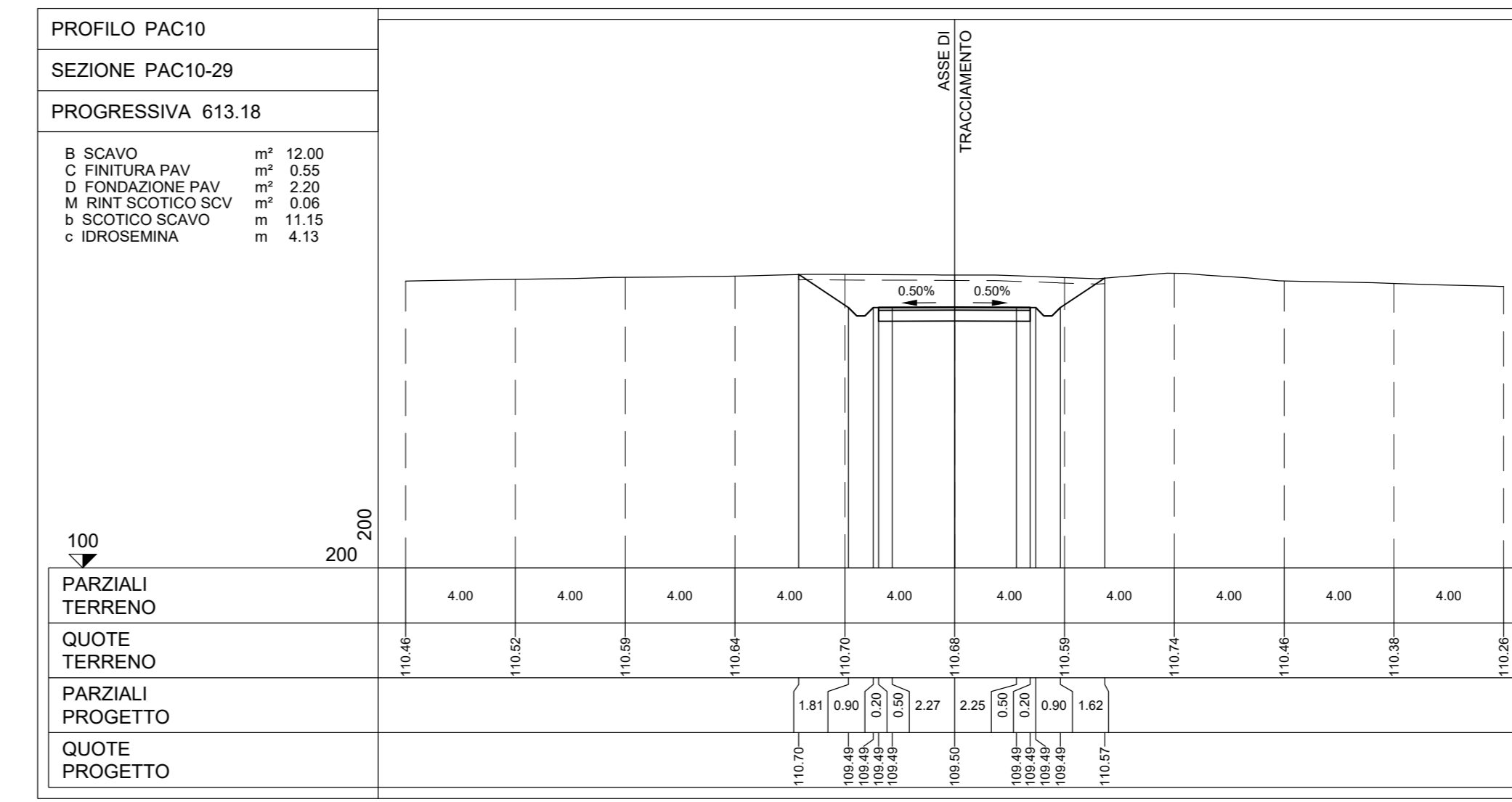
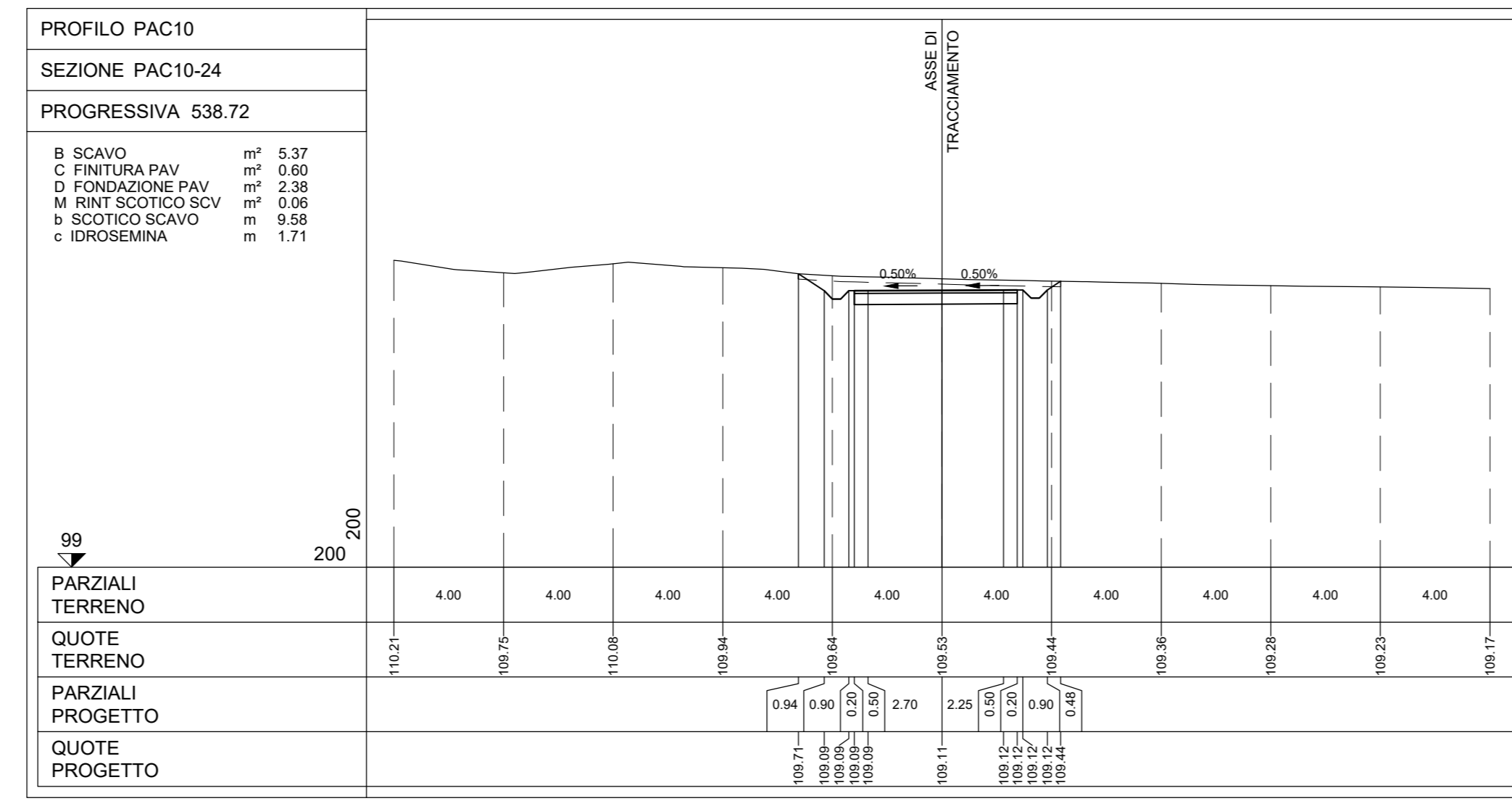
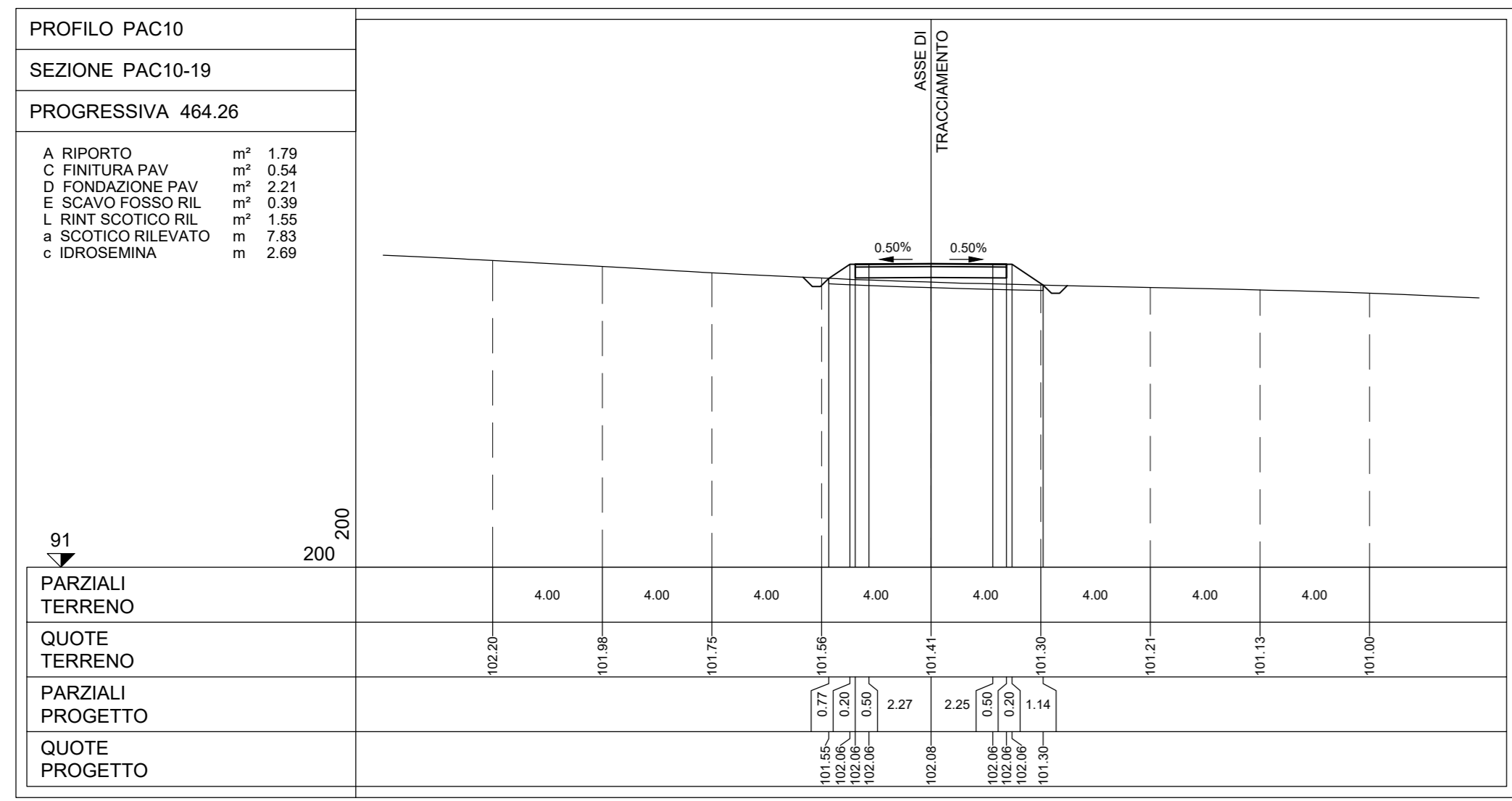
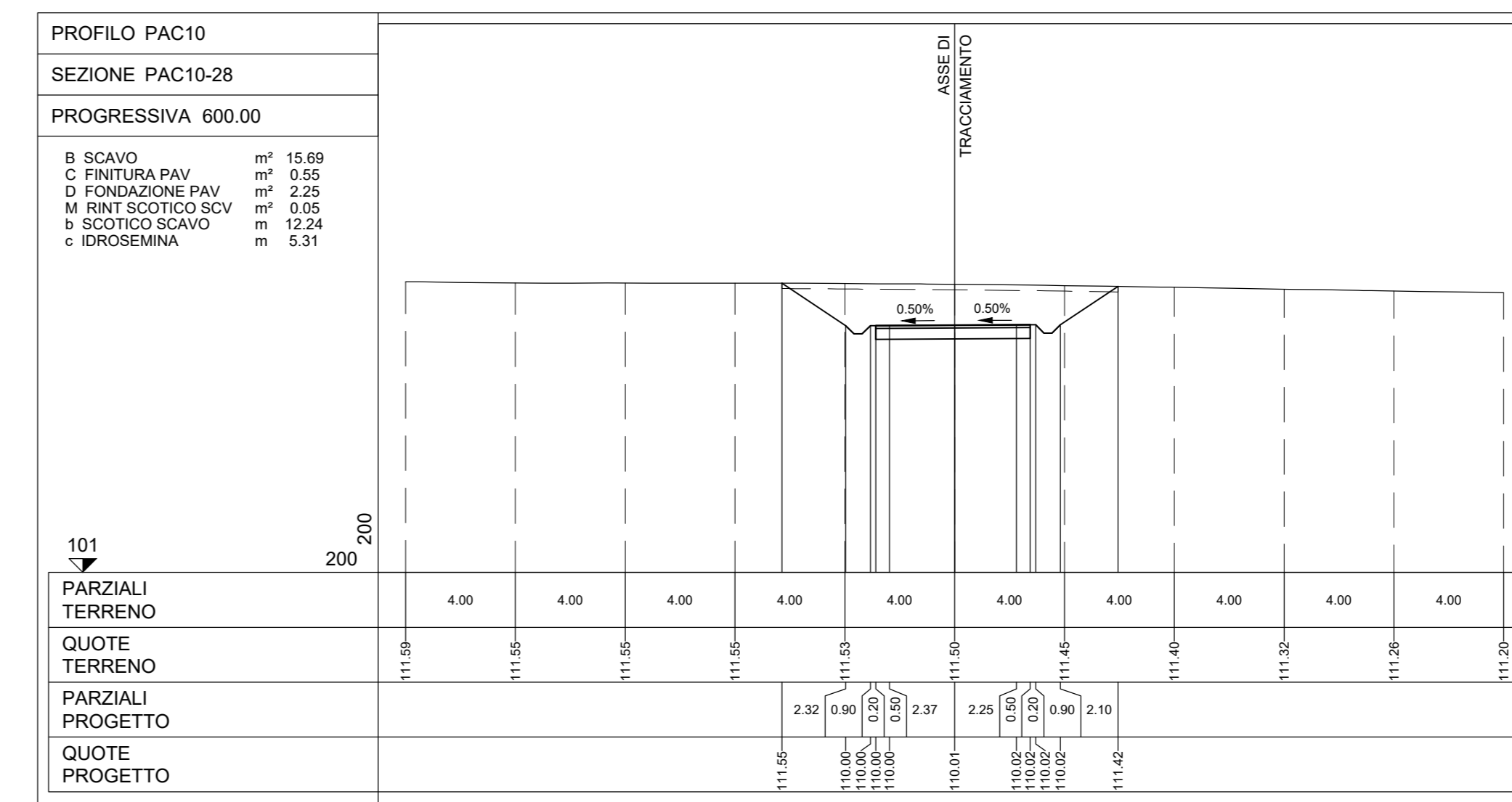
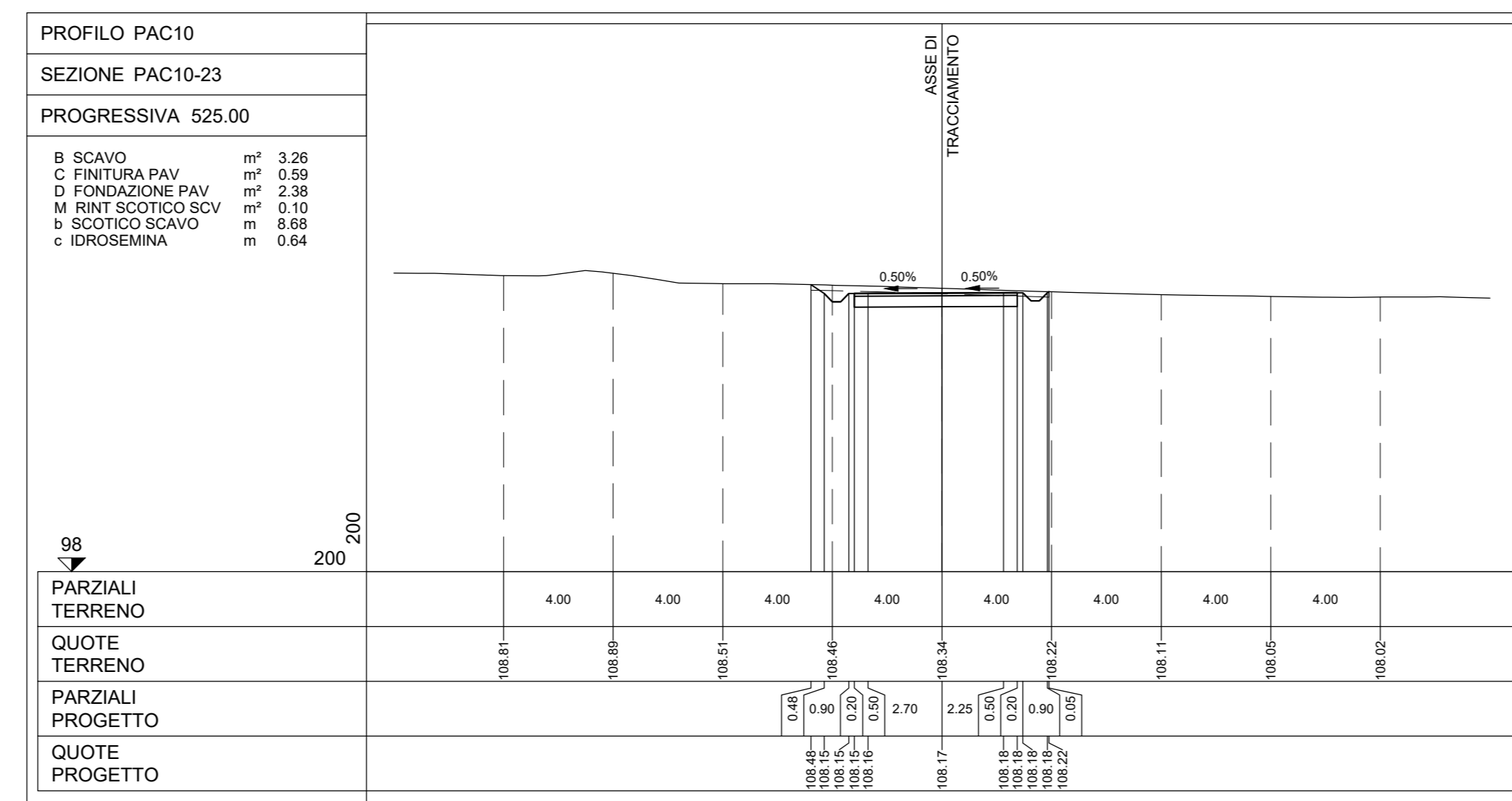
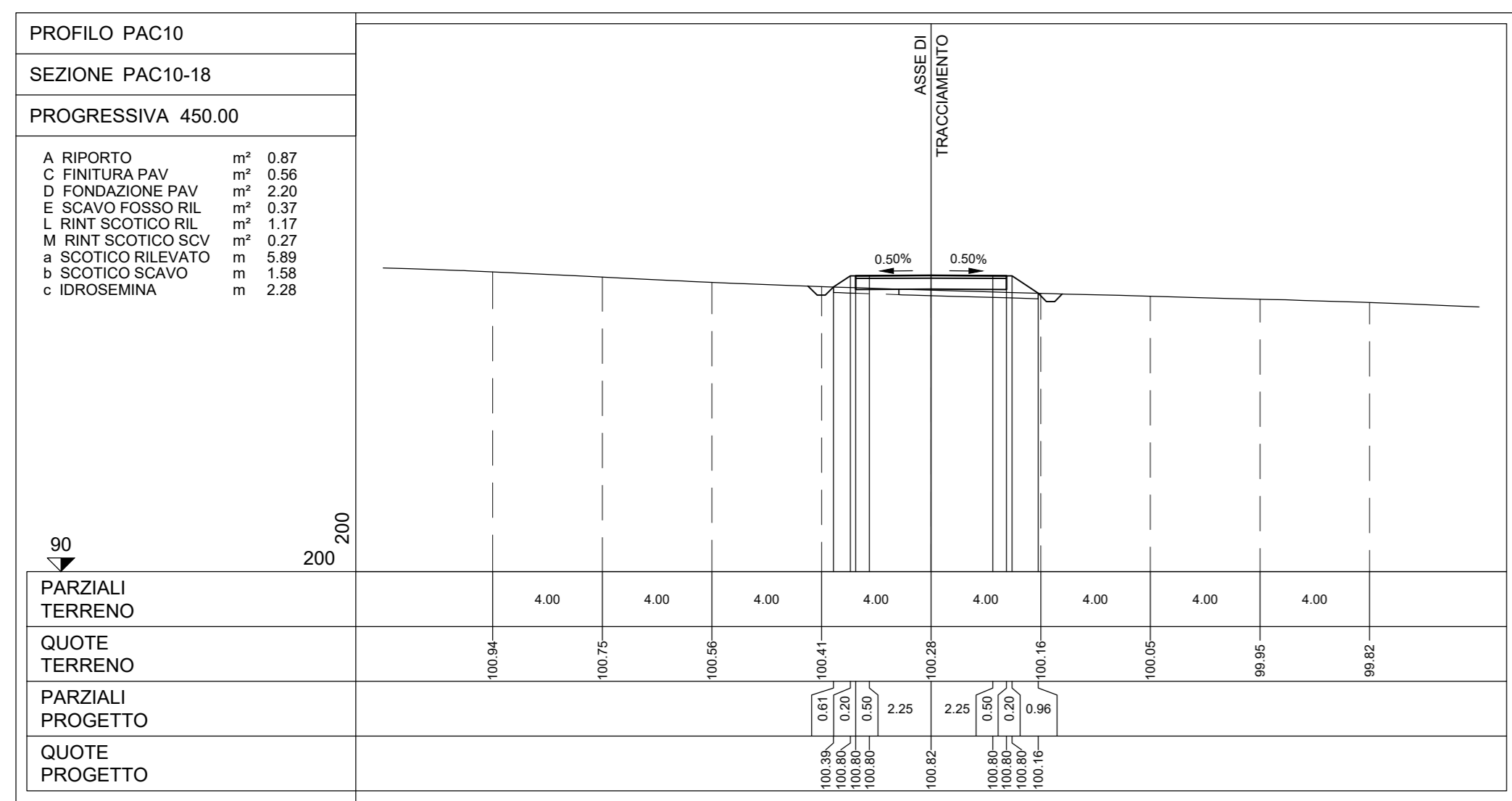
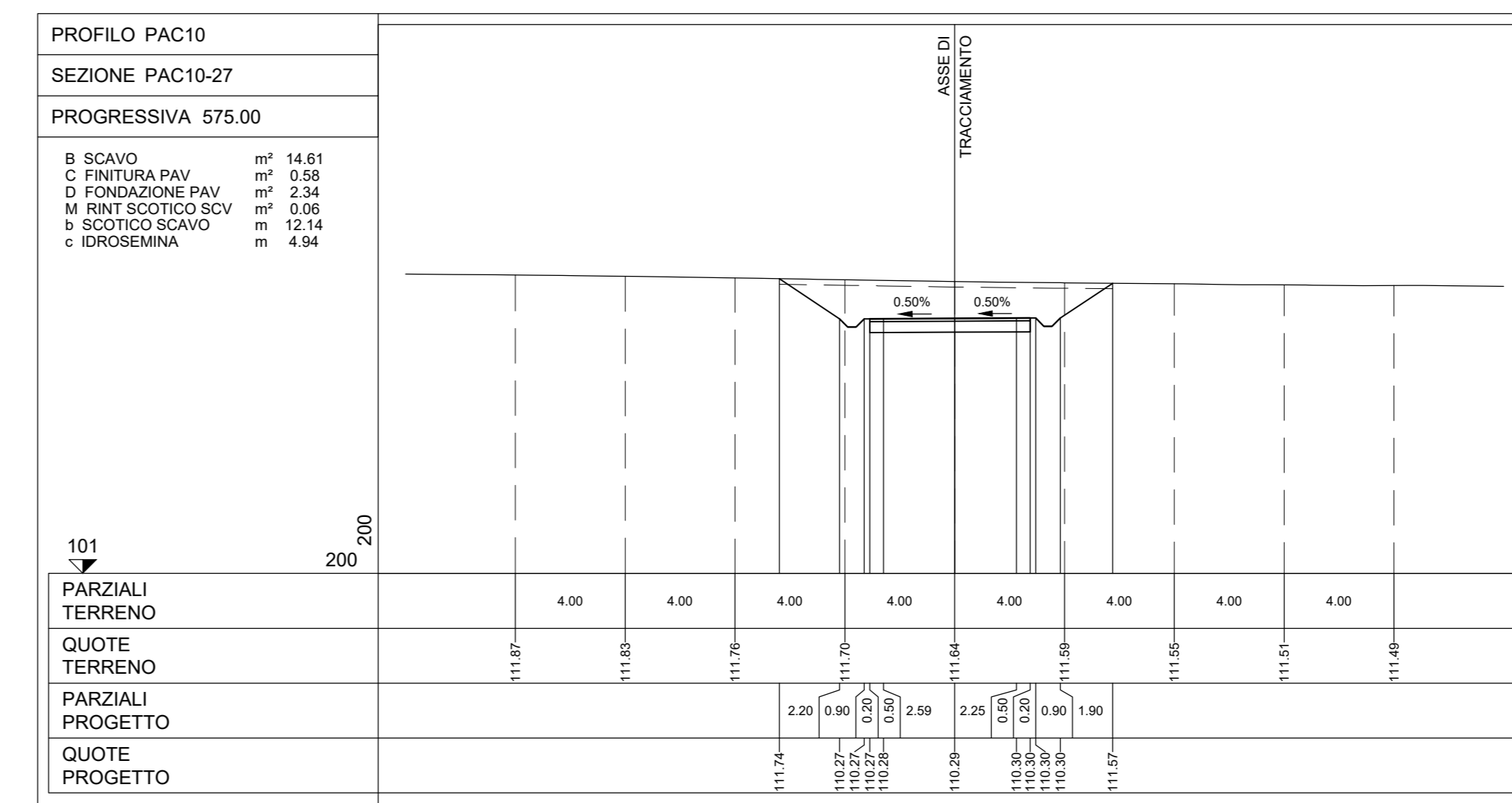
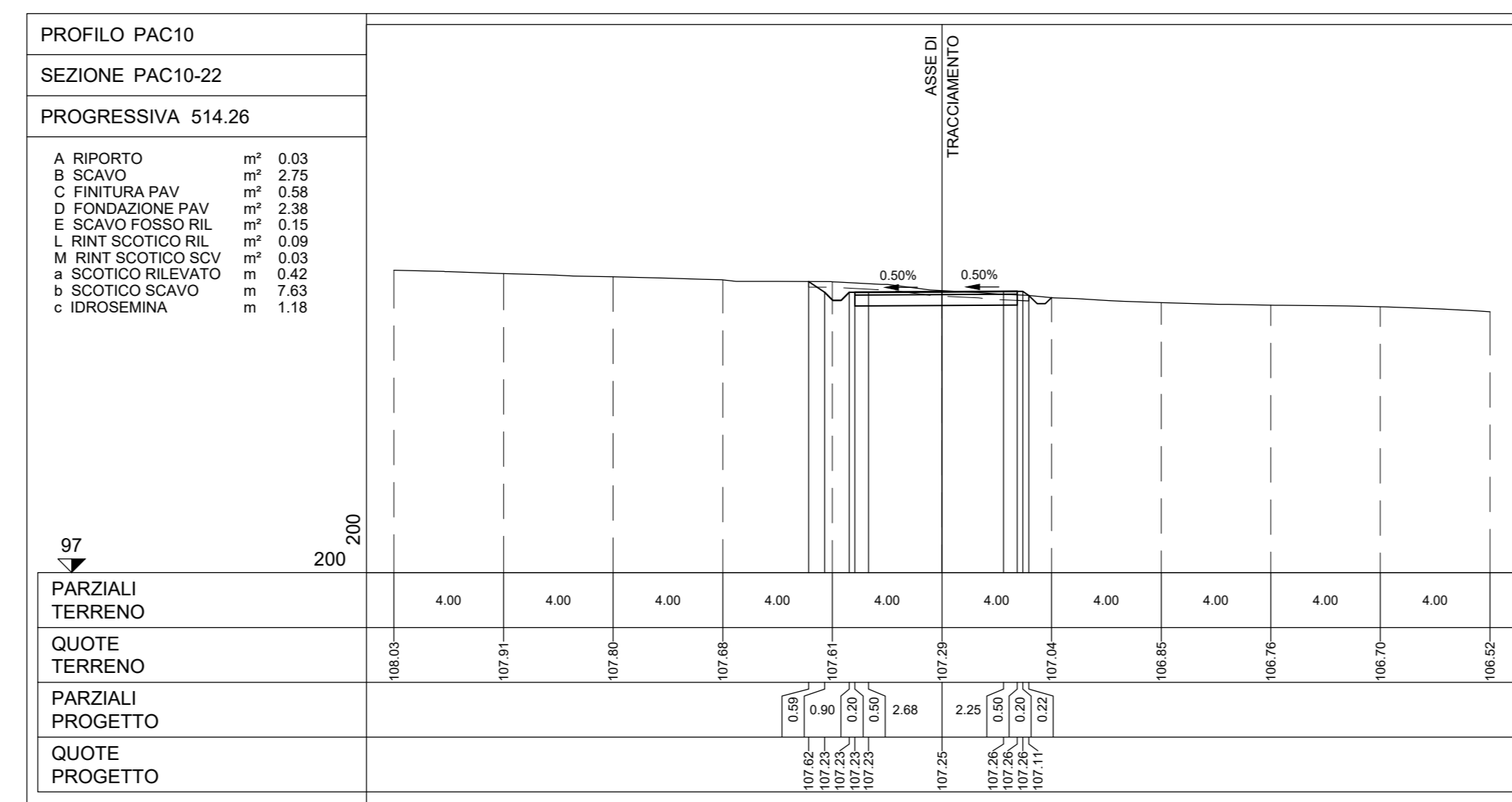
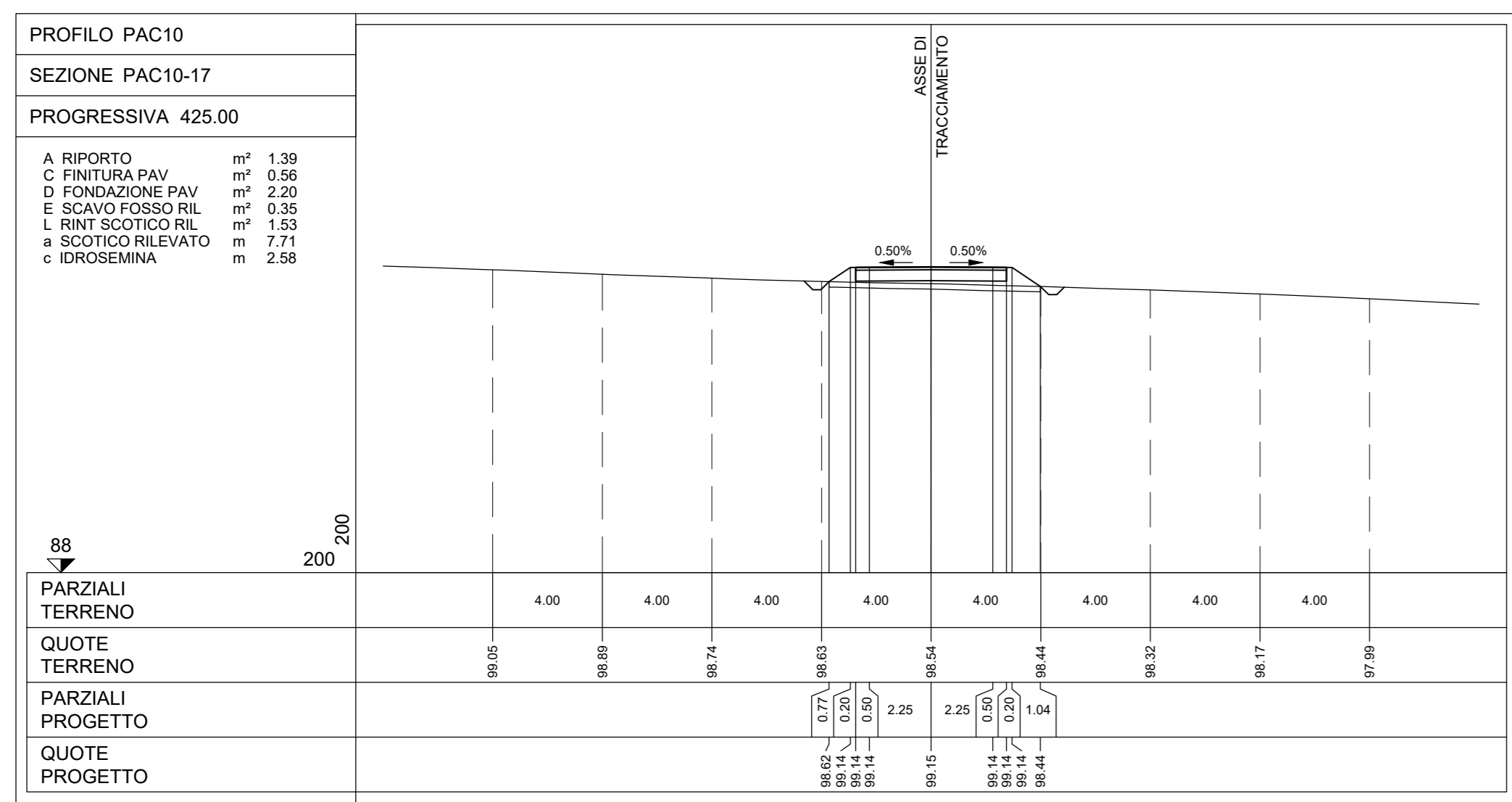
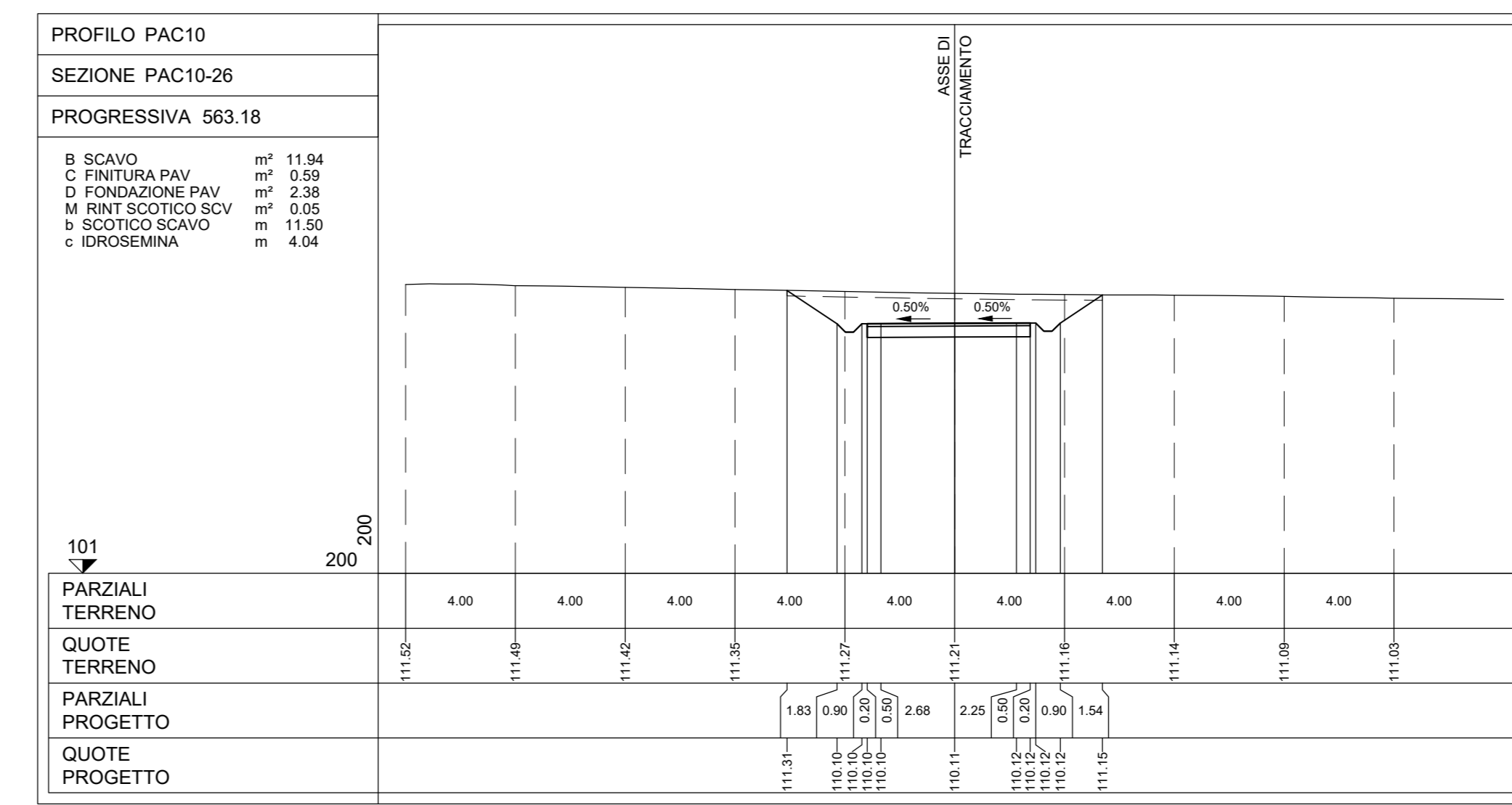
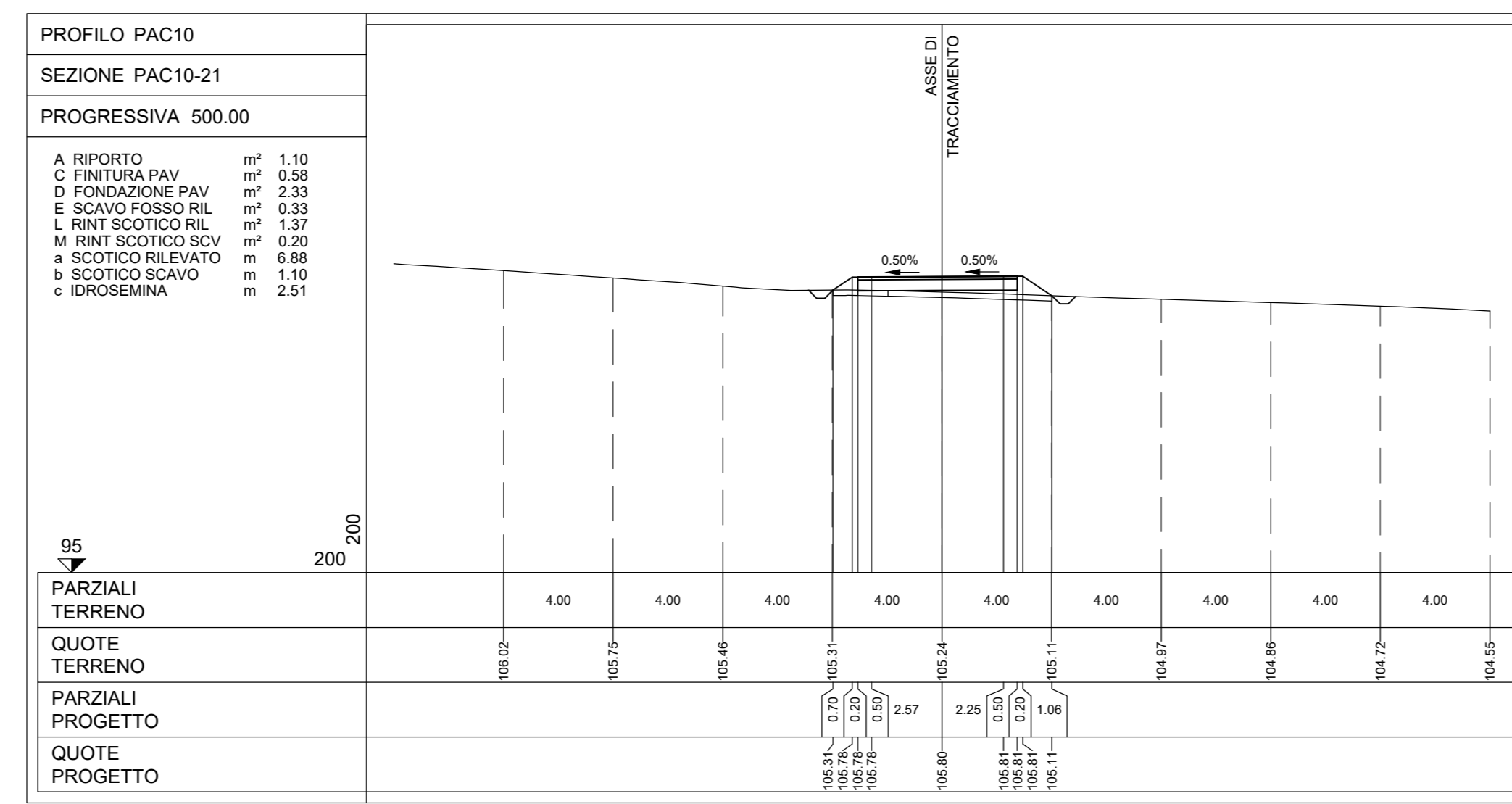
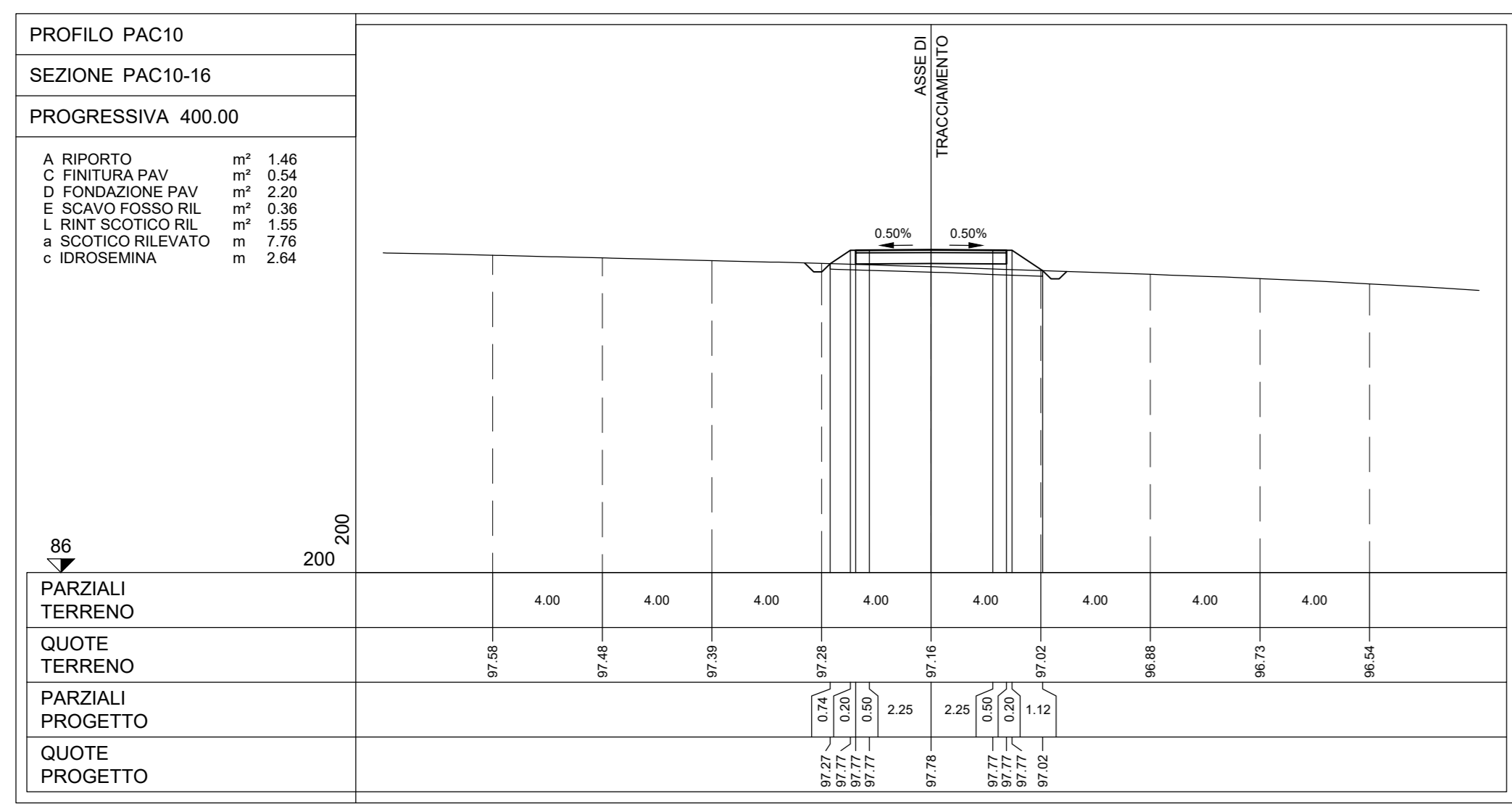


NOTE:  
- PER LE UBICAZIONI E LE DIMENSIONI RELATIVE ALLE OPERE IDRAULICHE SI VEDANO LE TAVOLE SPECIFICHE.



**NOTE:**  
- PER LE UBICAZIONI E LE DIMENSIONI RELATIVE ALLE OPERE IDRAULICHE SI VEDANO LE TAVOLE SPECIFICHE.



Rev.	Descrizione	%	ES	CC	07/2023
001	ESBORNE				

		Via Mecenate, 15 20138 Milano (MI) Tel. +39 02 574911 Fax +39 02 574912 Email: info@montana.it
PACECO S.R.L. Via Angelo Fumagalli 6, 20143 MILANO		PACECO S.R.L. Via Angelo Fumagalli 6, 20143 MILANO
Progetto: IMPIANTO EOLICO DA 108 MW COMUNE DI PACECO (TP), MISUSCUMI (TP) e TRAPANI (TP)		
Titolo: PAC10 - SEZIONI TRASVERSALI VIABILITA'		
N. Rev. 2395_5531_PAC_PFE_T13.10_REV1_PAC10-SEZIONI TRASVERSALI VIABILITA'		N. Tr. T13.10b
E' VIETATA LA RIPRODUZIONE DI QUESTO DOCUMENTO SENZA PREVENUTA AUTORIZZAZIONE SCRITTA DELLA MONTANA SPA		

