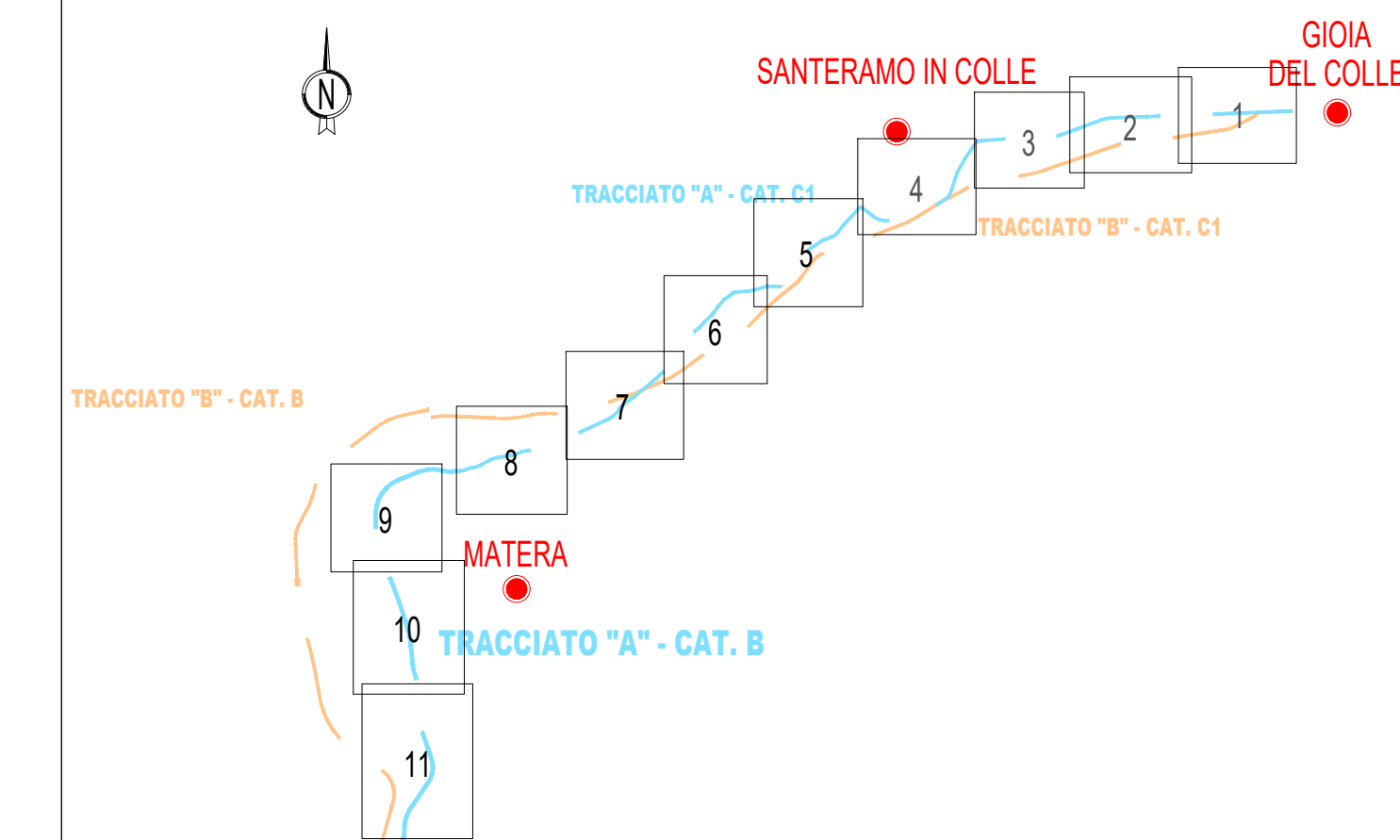


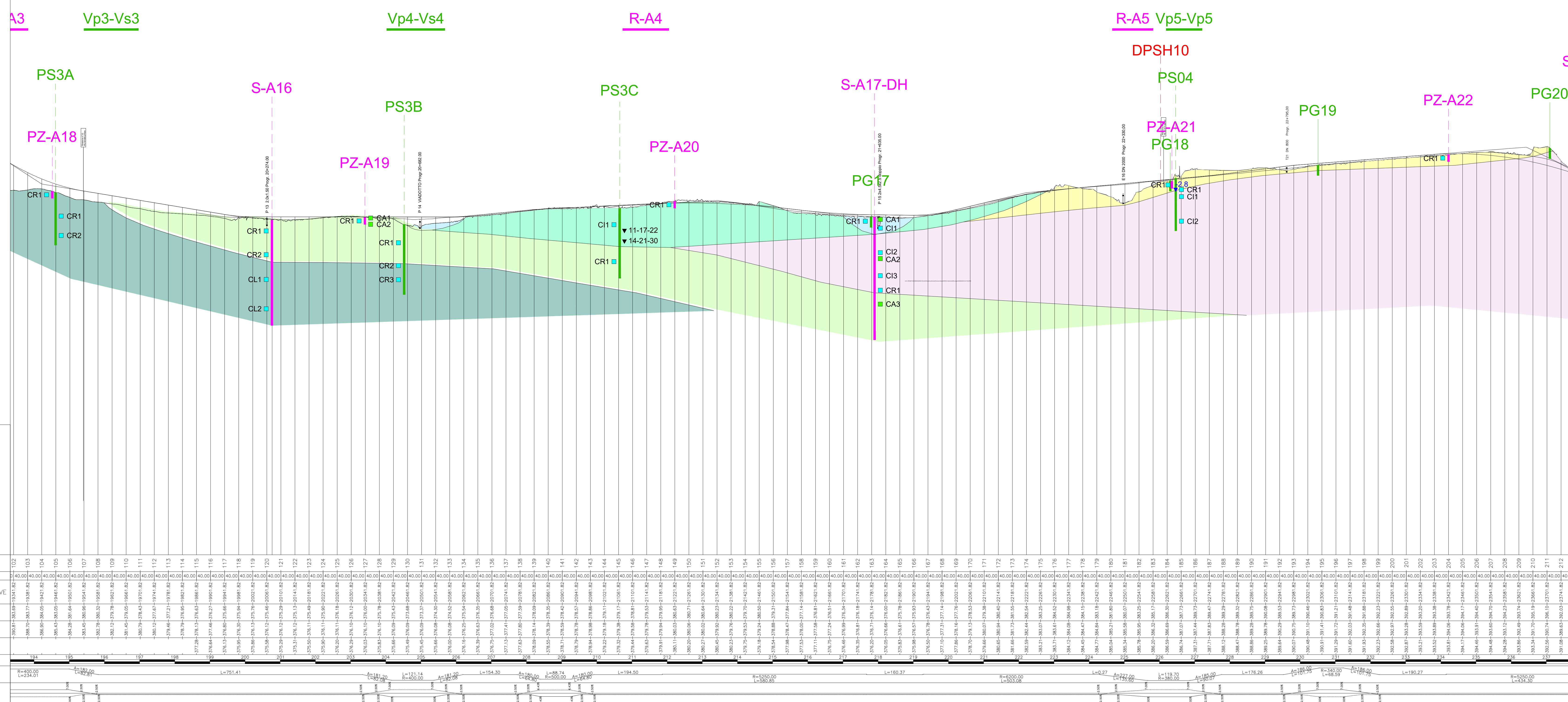
RIQUADRI DI RIFERIMENTO DELLE TAVOLE



LEGENDA table listing geological and geotechnical symbols and their corresponding descriptions, such as alluvial deposits and various types of argillaceous soils.

Table listing geotechnical investigations and tests performed in 2007 and 2020, including soil sampling, static penetrometry, and dynamic tests.

PARAMETRI GEOTECNICI table providing geotechnical parameters for different soil types, such as unit weight, cohesion, and modulus.



Project information block including Anas SpA logo, project title 'COLLEGAMENTO MEDIANO "MURGIA - POLLINO"', and details about the design and execution teams.

Table containing project metadata such as drawing code (TOO_GEO_GET_FC06_B), revision history, and scale (1:5000).